



U.S. Department of the Interior  
Bureau of Land Management

# BLM Colorado – Rocky Mountain RAC

Your Public Lands – 245 Million Acres of Possibilities







## **Agenda for Tuesday, August 16**

### **Day 1**

10:00 a.m.	<b>Meeting begins (hybrid in-person and virtual participation)</b>
10:10 a.m.	<b>Housekeeping and Introductions</b>
10:30 a.m.	<b>Opening remarks, State Director Doug Vilsack</b>
11:00 a.m.	<b>Ethics Presentation</b>
11:30 a.m.	<b>BLM CO 930 program presentation</b>
12:00 p.m.	<b>Lunch</b>
1:00 p.m.	<b>Royal Gorge Field Manager update</b>
1:45 p.m.	<b>San Luis Valley Field Manager update</b>
2:30 p.m.	<b>Break</b>
2:40 p.m.	<b>Board Training and Elections</b>
3:00 p.m.	<b>Public Comments</b>
3:30 p.m.	<b>Closing remarks and bin items</b>
4:00 p.m.	<b>Adjourn</b>
6:00 p.m.	<b>Meet and greet dinner</b>



# Rocky Mountain District RAC Overview

Category	Name	Business	Interest	Term Exp.
1	Curtis Howell		Outdoor Educator	April 2024
1	Frederick “Fred” Henderson	Mt. Princeton Geothermal	Energy and Mineral Development	Feb 2023
1	Robert “Bob” Hamel	Arkansas River Outfitters Association	Outdoor Recreation, Off Highway Vehicle Users, Commercial Recreation Activities	Feb 2023
1	Vacant			
1	Vacant			
Category				
2	John Sztukowski	Conservation Director, Wild Connections	Environmental organizations	April 2024
2	Irene Shonle	CSU Extension El Paso County Horticulture Agent	Dispersed recreation	April 2024
2	Mick Daniel	San Luis Valley Great Outdoors	Dispersed recreation	April 2024
2	Loretta Mitson		Archaeological and Historical interests	April 2024
2	Vacant			April 2024
Category				
3	Travis Black	Colorado Parks and Wildlife	State Agency Representative	April 2024
3	Arthur Koepsell	COGCC	State Agency Representative	Feb 2023
3	Kent Wood	Retired Astrophysicist and Geophysicist	Public-at-Large	April 2024
3	Ray Douglas	Park County Commissioner	Elected Official	Feb 2023
3	Lawrence Pacheco		Public-at-Large	April 2024



# Rocky Mountain District

- Manages 1.8 million surface acres and over 12 million subsurface acres.
- Includes the Royal Gorge Field Office, San Luis Valley Field Office, Brown's Canyon National Monument and Rocky Mountain District Fire





U.S. Department of the Interior  
Bureau of Land Management

# **Ethics Presentation**

## **Roxanne Baca, Ethics Counselor**

### **DOI Solicitor's Office**



# Federal Advisory Committees and Ethics Responsibilities of Representative Members





## FACA Advisory Committees and BLM Advisory Committees

- ▶ Members of Federal Advisory Committees Act advisory committees may come from both the public and private sectors.
- ▶ These individuals provide the Government with needed expert advice and diverse views.
- ▶ Composition of BLM Advisory Committees shall:
  - Be structured to provide fair membership balance, both geographic and interest-specific, in terms of the functions to be performed and points of view to be represented, as prescribed by its charter.
  - Be formed with the objective of providing representative counsel and advice about public land and resource planning, retention, management and disposal.

# BLM Advisory Committees Purpose and Objective

Purpose - Advise the Secretary of the Interior and Bureau of Land Management on matters relating to public lands and resources under the administrative jurisdiction of the Bureau of Land Management

Objective - To make available to the Department of the Interior and Bureau of Land Management the expert counsel of concerned, knowledgeable citizens and public officials regarding both the formulation of operating guidelines and the preparation and execution of plans and program for the use and management of public lands, their natural and cultural resources, and the environment.



# Representative Members

- ▶ Council members and members of general purpose subgroups shall be representative of the interests of the following 3 general groups:
  - ▶ Persons who: Hold Federal grazing permits or leases within the area for which the council is organized; represent interests associated with transportation or rights-of-way; represent developed outdoor recreation, off-highway vehicle users, or commercial recreation activities; represent the commercial timber industry; or represent energy and mineral development.
  - ▶ Persons representing: nationally or regionally recognized environmental organizations; dispersed recreational activities; archeological and historical interests; or nationally or regionally recognized wild horse and burro interest groups.
  - ▶ Persons who: hold state, county or local elected office; are employed by a State agency responsible for management of natural resources, land, or water; represent Indian tribes within or adjacent to the area for which the council is organized; are employed as academicians in natural resource management or the natural sciences; or represent the affected public-at-large.
- ▶ The Federal ethics rules that apply to Federal employees do not apply to representatives.

# Committee Charter Language

The U.S. Department of the Interior addresses potential conflicts of interest of its advisory committee representatives through the inclusion of certain ethics responsibilities in the committee charter.

# Current Ethics Requirements in Charters

**Non-Federal Members.** Non-Federal members of the Committees and subcommittees appointed as representatives are **not subject to Federal ethics statutes and regulations.**

However, **no non-Federal Committee or subcommittee members will participate in any Committee or subcommittee deliberations or votes relating to a specific party matter before the Department or its bureaus and offices including a lease, license, permit, contract, grant, claim, agreement, or litigation, in which the member or the entity the member represents has a direct financial interest.** [Emphasis added.]



# Committee Charter Language Specific to Bureau of Land Management (BLM) Committees

- ▶ As provided in 43 C.F.R. §1784.2-2, all members of the Committee shall be required to disclose their **direct or indirect interest** in leases, licenses, permits, contracts, or claims that involve lands or resources administered by BLM, or in any litigation related thereto.
  - ▶ For the purposes of this paragraph, indirect interest includes holdings of a spouse or dependent child. [Emphasis added.]



## Specific Party Matter

- ▶ A specific party matter typically involves:
  - a specific proceeding affecting the legal rights of the parties: or
  - an isolatable transaction or related set of transactions between identified parties.
- ▶ Examples include leases, licenses, permits, contracts, claims, grant, application, controversy, charge, investigation, arrest, enforcement action, request for ruling or other determination and related litigation which involves lands or resources administered by the Bureau of Land Management.

## Specific Party Matter

- ▶ “Specific party matter” does not include matters of general applicability, such as:
  - rulemaking;
  - legislation;
  - the formulation of general policy, standards, or objectives; or
  - other actions of general application.





## Direct and Indirect Financial Interests

- ▶ “Direct financial interest” means one’s own personal financial interest.
- ▶ “Indirect financial interest” includes holdings of a spouse or dependent child.
- ▶ “Financial interest” means the potential for gain or loss as a result of governmental action on the matter.
- ▶ Direct or indirect financial interest might arise from:
  - A permit on public land being discussed by the committee.
  - An oil or gas lease on public land.
  - Litigation involving lands or resources administered by the Bureau of Land Management.
  - Any similar interest that may be affected by the matter.

## Direct and Predictable Effect on Financial Interest

You are prohibited from participating in a specific party matter only if the matter will have a direct and predictable effect on your direct financial interests, or the holdings of a spouse or a dependent child or the direct financial interests of the entity you represent.

## Direct Effect on Financial Interests



- ▶ A specific party matter will have a direct effect on a financial interest if there is a close causal link between any decision or action to be taken in the matter and any expected effect of the matter on the financial interest.
- ▶ An effect may be direct even though it does not occur immediately.




## What is NOT a Direct Effect on Financial Interest

The chain of causation is attenuated or is contingent upon the occurrence of events that are speculative or that are independent of, and unrelated to, the matter.

The impact on financial interest occurs only as a consequence of the specific party matter's effects on the general economy.

# Predictable Effect on Financial Interest

There is a real, as opposed to a speculative, possibility that the matter will affect the financial interest of the member, spouse or dependent child, or the entity the member represents.



The magnitude of the gain or loss doesn't need to be known.



The dollar amount of the gain or loss is immaterial.

## Only Advisory Duties are Restricted

You may act, outside of advisory duties, on behalf of self or others, in a specific party matter before DOI that affects your financial interests.

You may not act, as part of advisory duties, on that specific party matter.



# Notification to Your Committee



▶ If you find yourself in a position to take any advisory action regarding a specific party matter that would affect your direct financial interest, or the holdings of a spouse or dependent child, or the direct financial interest of the entity you represent, you must:

- ▶ notify the Designated Federal Official; and
- ▶ recuse yourself from participating in that action.

▶ Look at the agenda prior to the meeting to see if there are matters listed from which you may need to recuse. Contact the BLM Ethics Team if questions.

## The Bottom Line

- ▶ FACA Committees and BLM Advisory Committees are put in place because the government needs your expertise, experience, and insight.
- ▶ Don't let an ethical problem derail the good work you are doing here.



# Questions?

- ▶ Contact Roxane Baca: [roxane.baca@doi.sol.gov](mailto:roxane.baca@doi.sol.gov)  
OR Danielle Yatrakis: [danielle.yatrakis@doi.sol.gov](mailto:danielle.yatrakis@doi.sol.gov)
- ▶ General inquiries: [blm\\_wo\\_ethics\\_office@blm.gov](mailto:blm_wo_ethics_office@blm.gov)



1849 C Street NW, MS 5311  
Washington DC 20240



**Phone:** 202-208-7960



DOI\_Ethics@sol.doi.gov (general inquiries)  
DOI\_FDonline@sol.doi.gov (financial disclosure only)



**Website:** [www.doi.gov/ethics](http://www.doi.gov/ethics)  
**Mobile App:** Search for “DOI Ethics” in app store



U.S. Department of the Interior  
Bureau of Land Management

# **BLM CO 930 State-wide Planning Efforts**

## **Alan Bittner, Deputy State Director for Renewable Resources**



# Big Game Planning

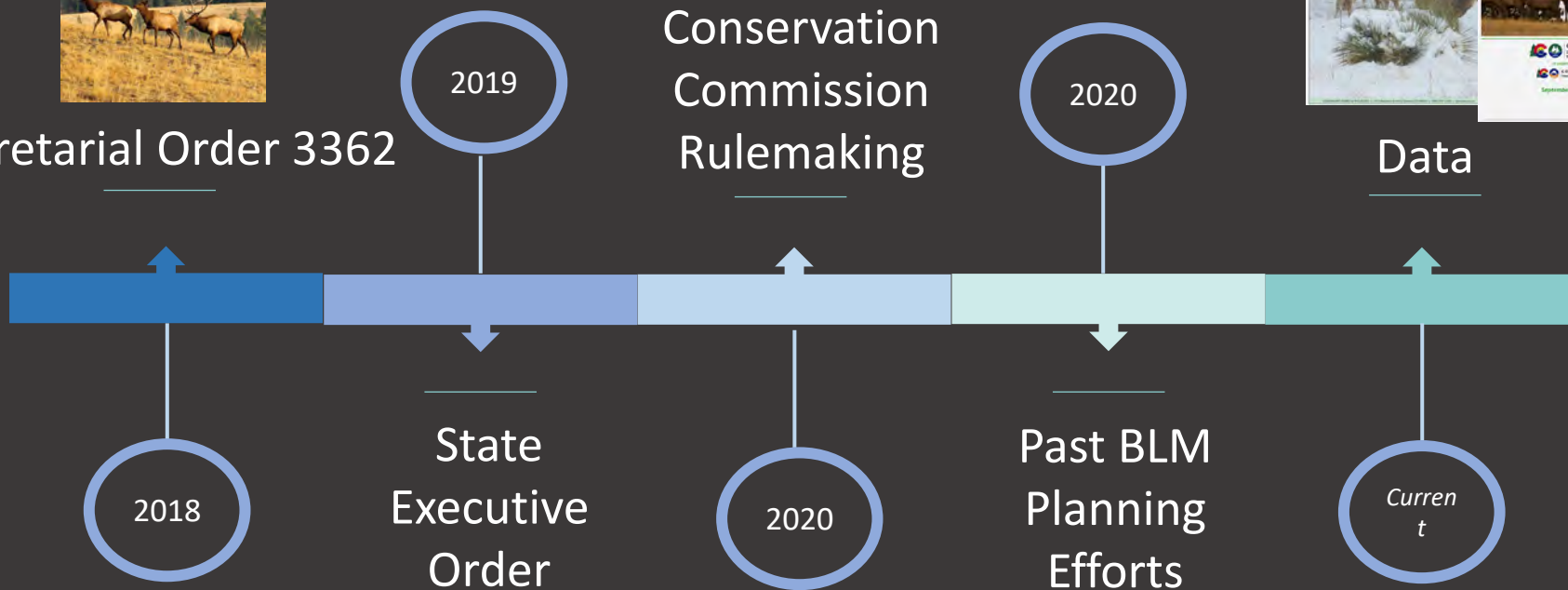


Colorado Oil  
and Gas  
Conservation  
Commission  
Rulemaking

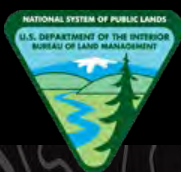


Secretarial Order 3362

Data







# Purpose and Need (preliminary)



- Evaluate alternative management approaches for oil and gas to conserve important big game habitat
- Evaluate **consistency** of BLM's management for oil and gas and FLPMA mandate.
- Analyze, with the best available science, conditions and high-density activities.



# Conservation



- Species
  - Elk, mule deer, pronghorn
- Important Habitat
  - Includes Colorado Parks and Wildlife's "High Priority Habitat"
- Density Limitations
- COGCC Rulemaking (Wildlife 1200 series)





# How to Comment

- **Project Website:** <https://go.usa.gov/xzXxY>
- **Mail:** BLM Colorado State Office, Attn: Big Game Corridor Amendment/EIS, 2850 Youngfield St., Lakewood, CO 80215
- **Comment Period ends Sept 2<sup>nd</sup>.**

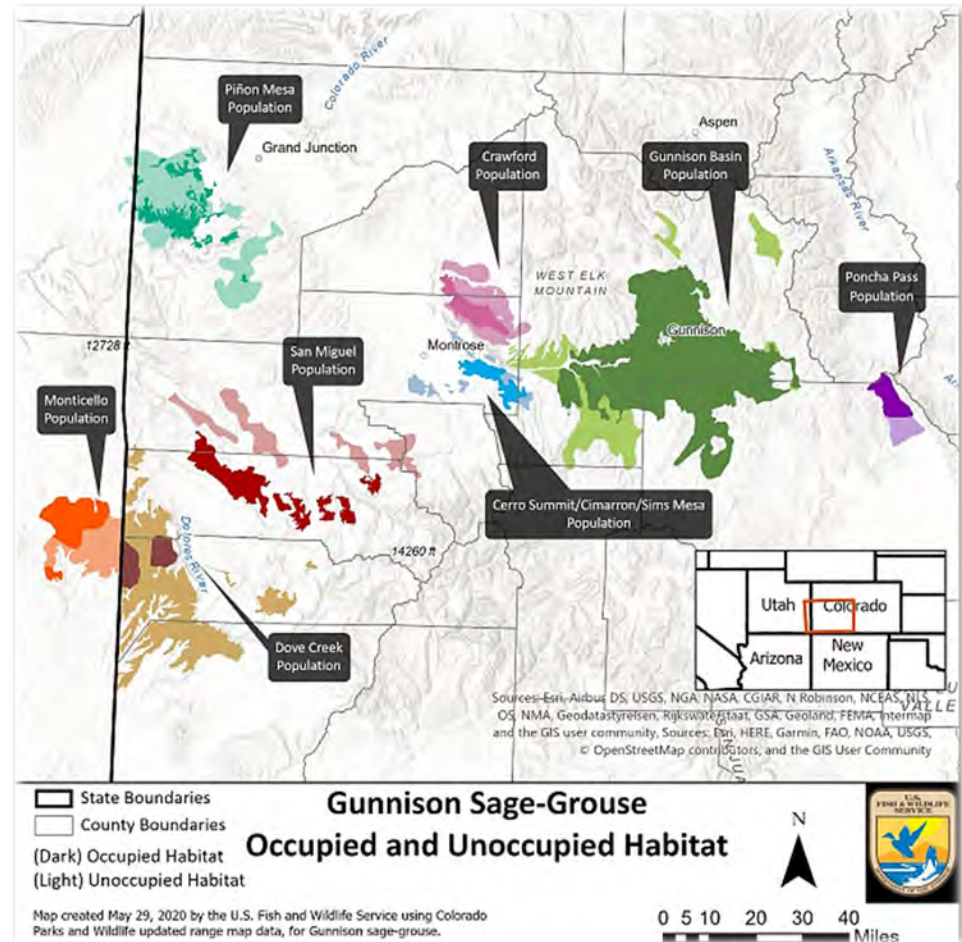




## Background

### Gunnison sage-grouse (*Centrocercus minimus*)

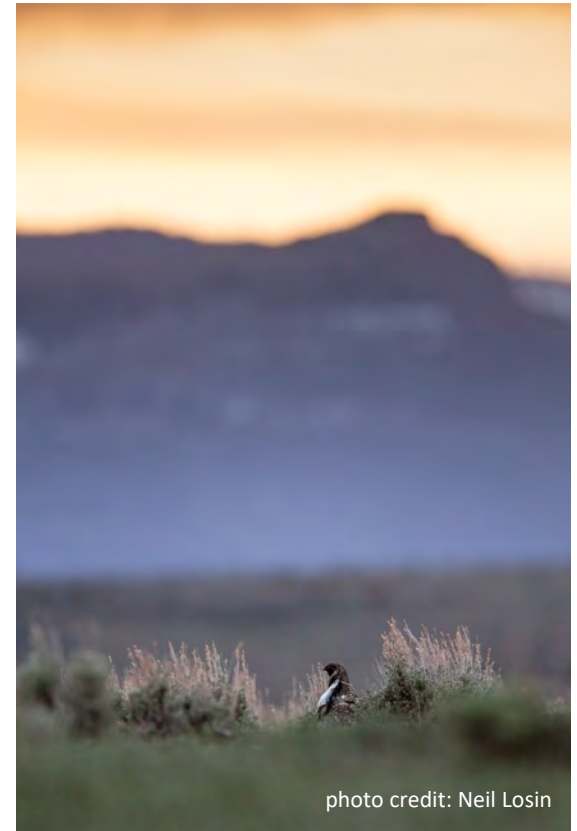
- Require expansive sagebrush for food and cover
  - Eat exclusively sagebrush during winter
- Current range limited to eight isolated populations in southwestern Colorado and southeastern Utah
- BLM manages about 40% of Gunnison sage-grouse habitat across ten Colorado and two Utah counties
- Gunnison Basin supports largest population
  - Approx. 85% of breeding birds
  - Approx. 65% of occupied habitat





## Previous Planning and Relevant Documents

- In 2014, U.S. Fish and Wildlife Service (USFWS) listed Gunnison sage-grouse as ***Threatened*** under Endangered Species Act and designated approximately 1.4 million acres critical habitat
- BLM released Draft RMP Amendment/Draft EIS in August 2016, but paused planning effort in 2018 following announcement that USFWS would complete species recovery plan.
- USFWS released ***Final Recovery Plan for Gunnison Sage-Grouse*** and ***Recovery Implementation Strategy*** in October 2020.
- In 2022, BLM cancelled 2016 Draft EIS and initiated this new planning effort to develop a Gunnison sage-grouse RMP Amendment and Draft EIS.
- Current planning process will result in release of Draft EIS for public comment.







## Purpose

- Promote recovery of Gunnison sage-grouse (threatened species) by maintaining and enhancing habitat
- Ensure management actions on BLM lands and sub-surface mineral estate support conservation goals for Gunnison sage-grouse
- Develop BLM management practices considering current science and data, relevant Federal, State, and local decisions

## Need

- Address the rangewide downward population trend of the Gunnison sage-grouse and issues related to land management that may affect habitat
- Fulfill the Endangered Species Act to conserve federally listed species and the ecosystems they depend on
- Respond to changed ecological and climate conditions affecting BLM-managed lands (including drought, invasive plants, habitat loss and fragmentation, impaired riparian areas, frequent wildland fires)





## Preliminary Issues



What habitat objectives should the BLM prioritize given the diverse condition of public lands across the range of Gunnison sage-grouse, including the effects of climate change?



How should the BLM apply mitigation, including compensatory mitigation, to address impacts to Gunnison sage-grouse populations and their habitat?



How should the BLM prioritize and manage the leasing and development of renewable and non-renewable energy resources?



How should the BLM apply adaptive management strategies for livestock grazing during drought conditions and on grazing allotments not meeting standards for Gunnison sage-grouse habitat due to grazing activities?



# How to Submit Comments

## Project Website (ePlanning):

<https://eplanning.blm.gov/eplanning-ui/project/2019031/510>

## Mail:

Gunnison Sage-Grouse RMP Amendment  
BLM Grand Junction Field Office  
2815 H Rd  
Grand Junction, CO 81506

Comments must be received by **August 22, 2022.**



**Project Email: [BLM\\_CO\\_GUSG\\_RMPA@blm.gov](mailto:BLM_CO_GUSG_RMPA@blm.gov)**



## Greater Sage Grouse Planning



Notice of Intent: Nov 2021.



The BLM has prepared a Scoping Report summarizing the comments received regarding the updates to BLM's land use plans. We are evaluating their content to help in the preparation of draft EISs to be released late this year or early next. The scoping report and all comments received have been posted to the ePlanning site.



Memorandums of Understand (MOUs) are being finalized with Cooperators.



Planning to hold CoOp meetings near the end of September.



## Preliminary Issues



Incorporating new science to the effort.



Each effort is state by state. BLM is working to evaluate new science and impacts to Greater Sage-Grouse.



The associated spatial data are being used to review current habitat designations (e.g., PHMA, GHMA, OHMA).





Lunch Break



# Royal Gorge Field Office

This office administers more than 600,000 surface acres of public land along the Front Range and 6.8 million sub-surface acres. Since the field office spans such a large area, it covers a variety of terrain and includes Brown's Canyon National Monument.

Keith Berger, Field Manager







U.S. Department of the Interior  
Bureau of Land Management

# Recreation and Arkansas Headwaters Recreation Area







# Browns Canyon National Monument

Established by Presidential  
Proclamation on February 19, 2015

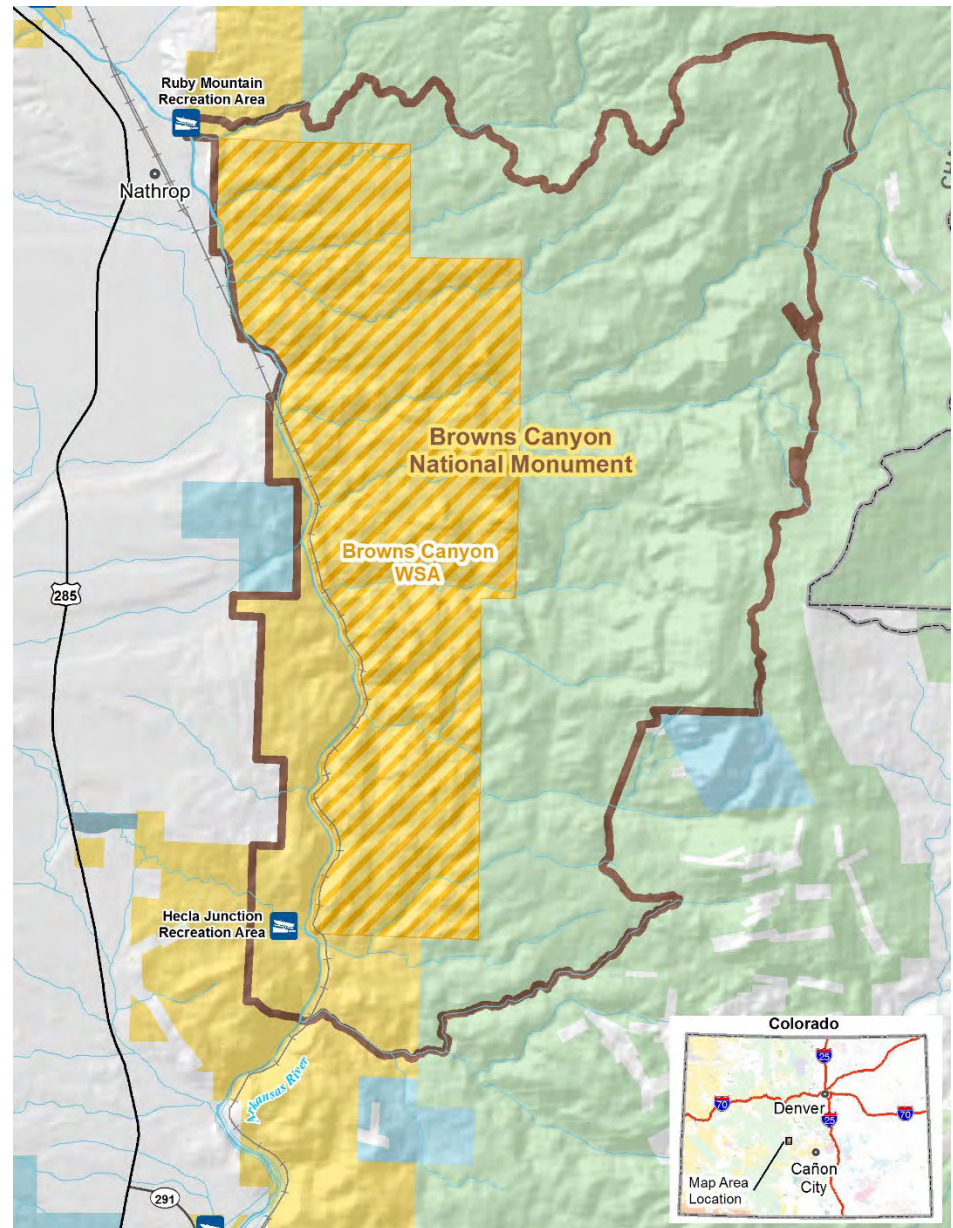
Browns Canon Monument Plan  
completed July 2020

Total = 21,600 acres

11,810 ac. USFS + 9,790 ac. BLM

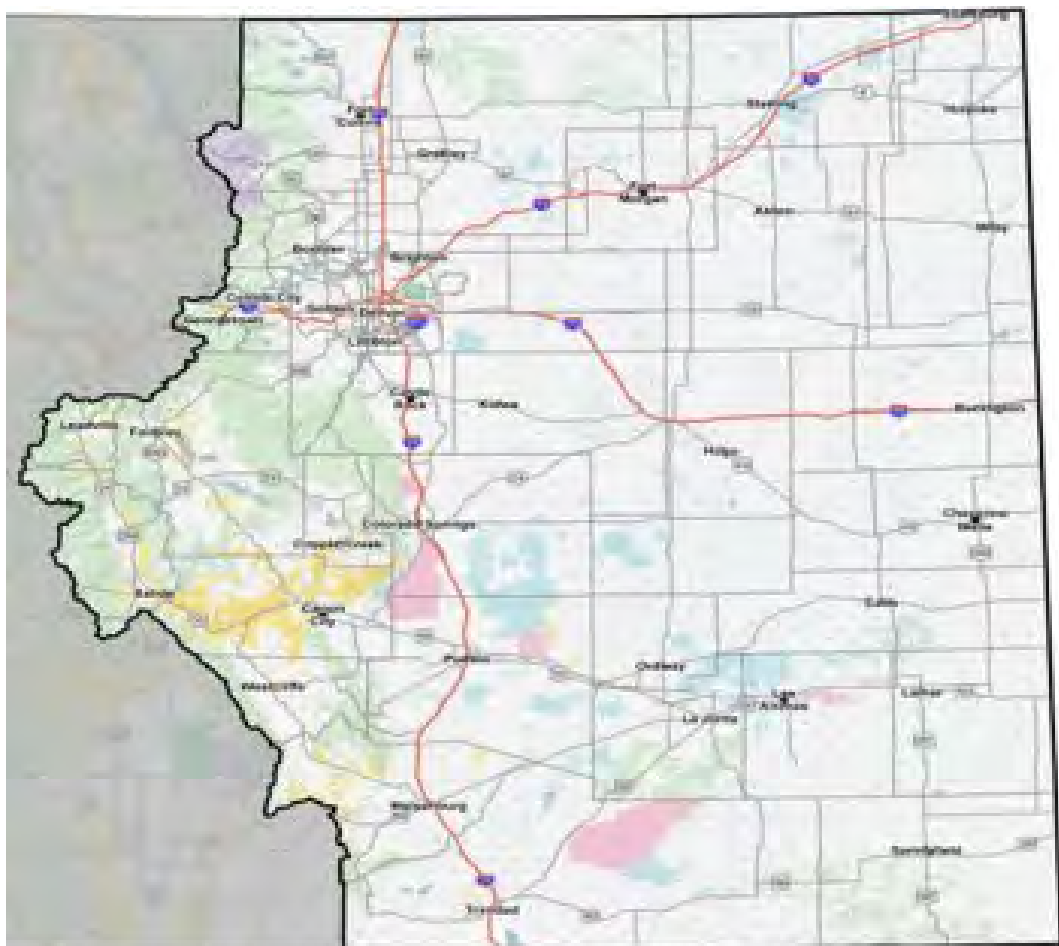
7,463: BLM Wilderness Study Area

11,162 = USFS Roadless Area





# Eastern Colorado Resource Management Plan (RMP)



## Surface Management Agency

- Bureau of Land Management
- U.S. Forest Service
- National Park Service
- U.S. Fish and Wildlife Service
- Military Reservation
- Bureau of Reclamation
- Other Federal
- State
- County, City, Private



This information is made by the Bureau of Land Management as to the accuracy, reliability, or completeness of these data for individual use or aggregate use with other data.

## BLM Decision Area (acres)

- Surface: 658,200
- Federal mineral estate: 3,311,900
- Split estate: 2,673,000
- Wilderness Study Areas: 68,200

## Private Land

- 28,365,600

## U.S. Forest Service

- 3,463,000

## State of Colorado, County, City

- 2,418,000

## Department of Defense

- 446,800

## Other Federal

- 206,600

## Planning Area Total

- 35,558,200



## ECRMP - Timeline to date

Publish notice of intent	June 1, 2015
Public Envisioning:	May – June 2015
Develop preliminary alternatives	Oct. 2015 – Feb. 2017
Public review of preliminary alternatives	March – May 2017
Develop Draft RMP/EIS	2017 – 2019
Published Draft RMP/EIS	June 2019
Public Review of Draft RMP/EIS	June – Sept. 2019





# Alternatives

Alternative A	Alternative B	Alternative C	Alternative D
Current Management	Emphasis on Natural Processes	Emphasis on Responding to Demand for Resource Use	Emphasis on the Human Ecoregion/Human Landscape
The no action alternative is a continuation of the present management direction and current prevailing conditions and is based on existing 1986 Northeast and 1996 Royal Gorge planning decisions and subsequent amendments.	Maximizes ecosystem function.	Minimizes restrictions on resource use to facilitate development for commercial and public use.	Manages resources to allow for local community use and interest based on community desires.



## Alternative D Human Ecoregion/ Landscape Areas

- Eastern Plains
- Upper Arkansas River Valley
- Rural Foothills
- Front Range





U.S. Department of the Interior  
Bureau of Land Management

***Eastern Colorado Resource Management Plan ePlanning site:***

***<https://go.usa.gov/xQcZT>***

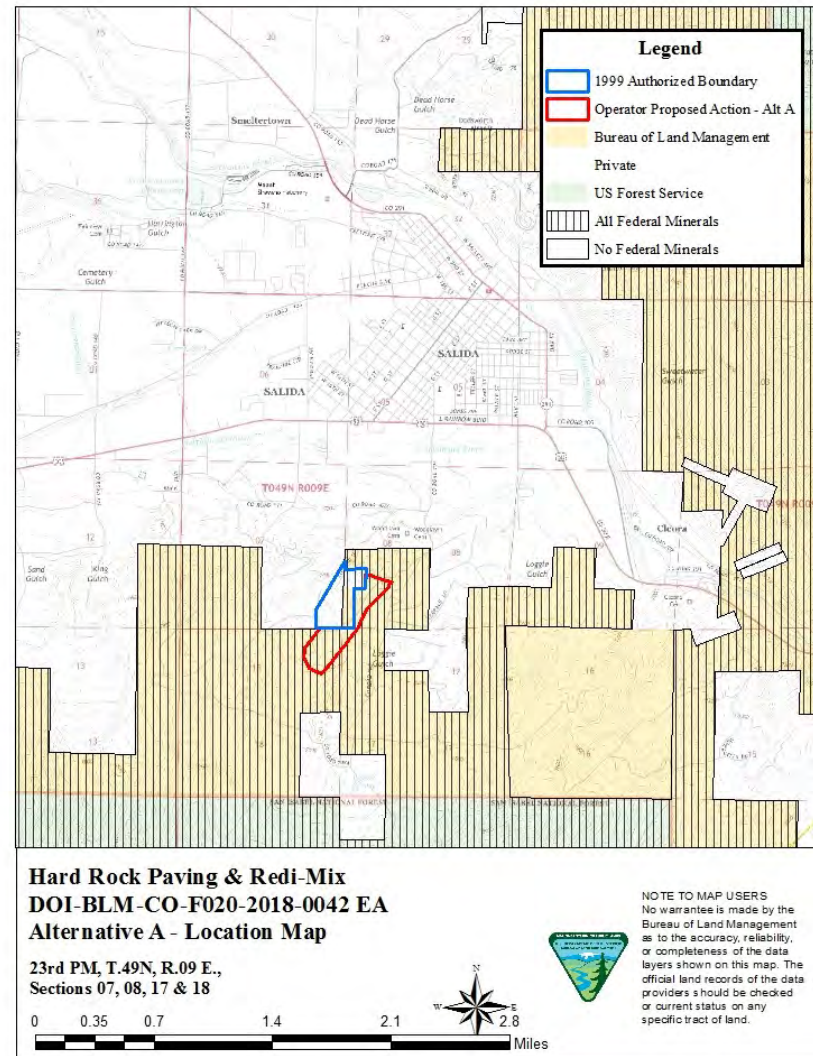


# Hard Rock Main Pit - Expansion and Road Realignment

Legal Description: Chaffee  
County, CO  
T. 49 N., R. 9 E., secs. 7, 8,  
17 and 18. (NMPM)

Applicant: Hard Rock  
Paving & Redi-Mix, Inc

NEPA Document Number:  
DOI-BLM-CO-F020-2018-  
0042 EA

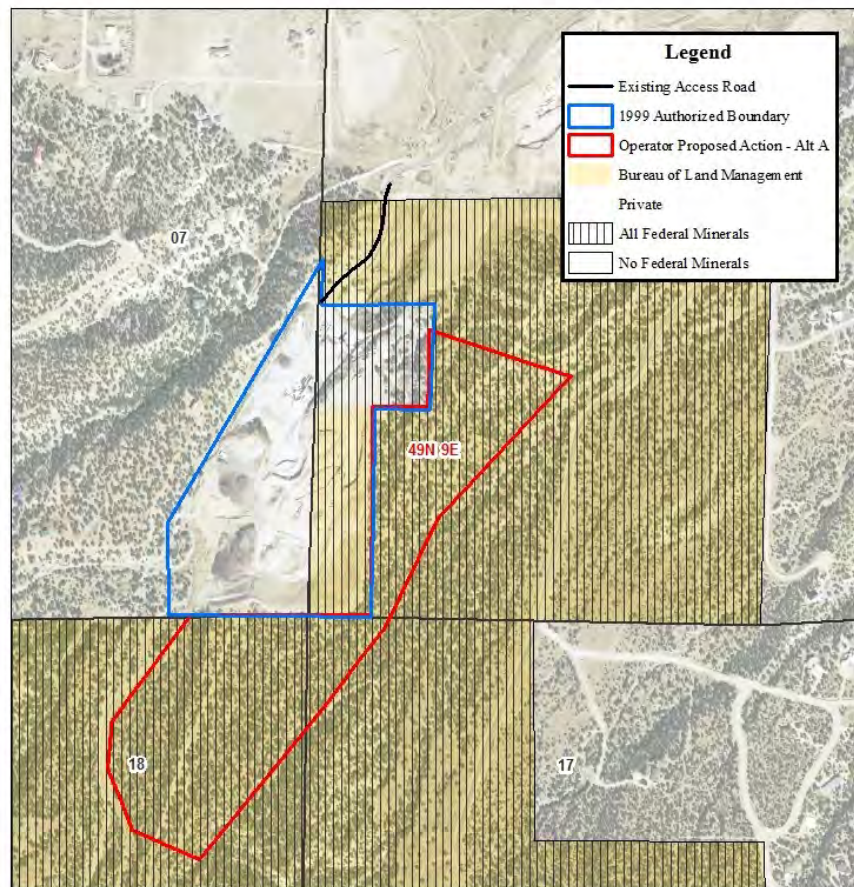






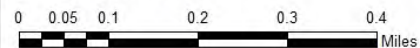
# ALTERNATIVES\*

(\*Also includes No-Action)

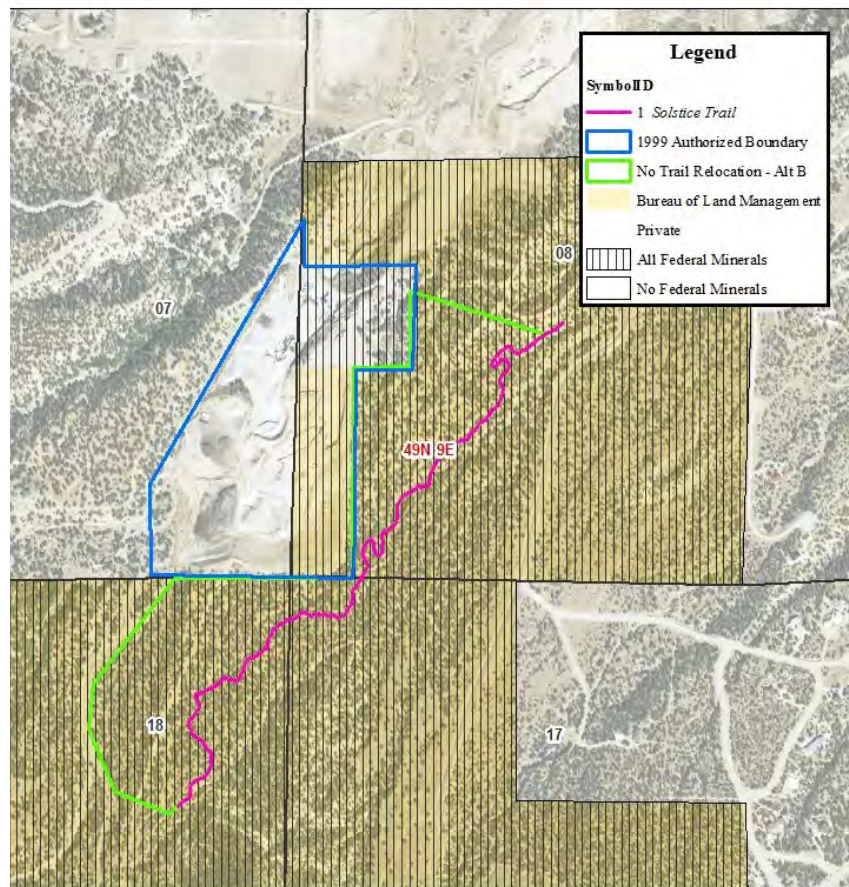


## Hard Rock Paving & Redi-Mix DOI-BLM-CO-F020-2018-0042 EA Alternative A - Project Specific Map

23rd PM, T.49N, R.09 E.,  
Sections 07, 08, 17 & 18

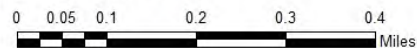


NOTE TO MAP USERS  
No warranty is made by the  
Bureau of Land Management  
as to the accuracy, reliability,  
or completeness of the data  
layers shown on this map. The  
official land records of the data  
providers should be checked  
or current status on any  
specific tract of land.



## Hard Rock Paving & Redi-Mix DOI-BLM-CO-F020-2018-0042 EA Alternative B - Project Specific Map

23rd PM, T.49N, R.09 E.,  
Sections 07, 08, 17 & 18



NOTE TO MAP USERS  
No warranty is made by the  
Bureau of Land Management  
as to the accuracy, reliability,  
or completeness of the data  
layers shown on this map. The  
official land records of the data  
providers should be checked  
or current status on any  
specific tract of land.





# Midland Hills Tunnel Improvement MOA: Chaffee County Rd 371



Colorado Midland  
Railroad Tunnels

SCF354.53  
SCF354.54  
SCF354.55  
SCF354.56

T135 R78W  
Harvard Lakes 7.5'  
USGS Topo

1:24,000

U.S.D.I.  
Bureau of Land Management  
Royal Gorge Field Office  
Canon City, CO



NOTE TO MAP USERS  
No warranty is made by the  
Bureau of Land Management  
as to the accuracy, reliability,  
or completeness of the data  
layers shown on the map. The  
official land records of the data  
providers should be checked  
or current status on any  
specific tract of land.

Map prepared by Monica Weimer



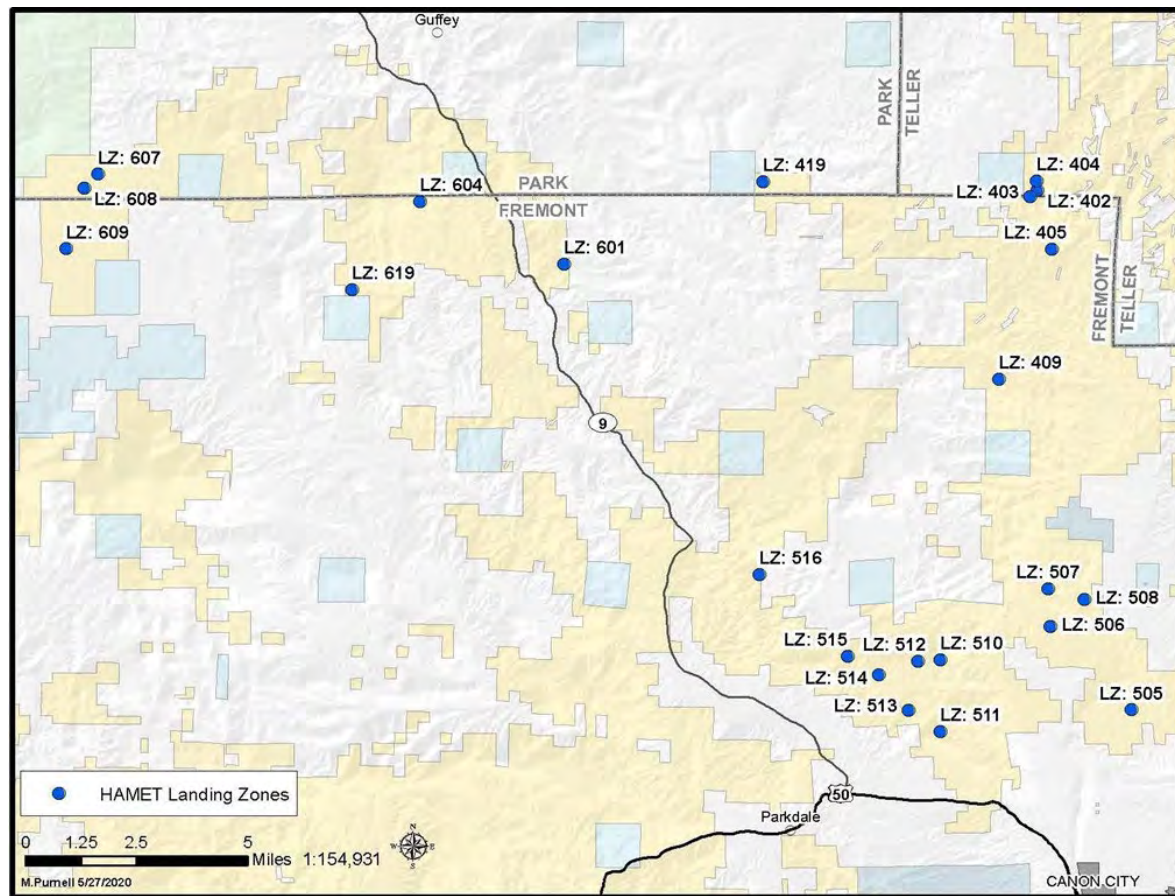




# Fort Carson High Altitude Mountain Environmental Training

## Environmental Assessment

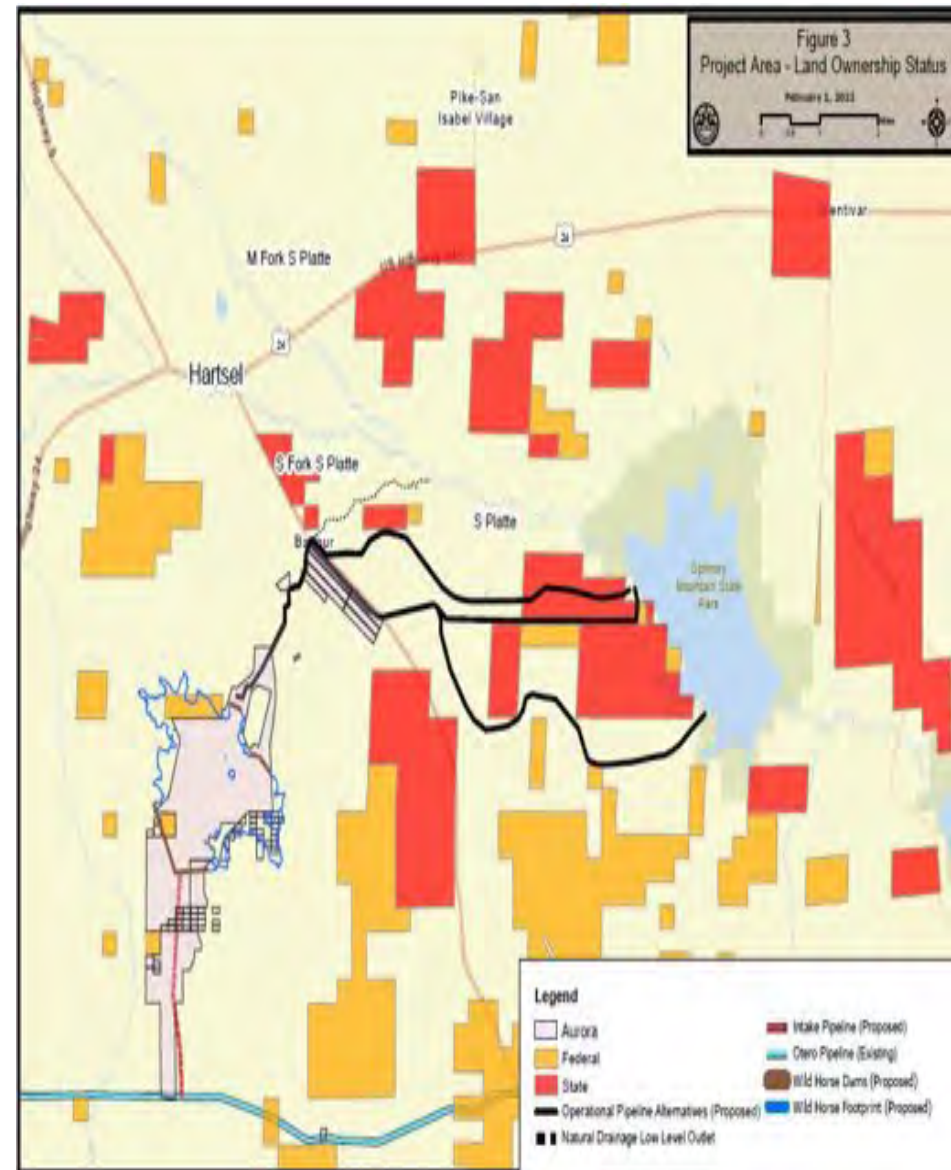
## DOI-BLM-CO-F020-2019-0061 EA





## Wild Horse Reservoir

- The City of Aurora recently applied for a Right-of-Way on portions of BLM as part of the development of the Wild Horse Reservoir in South Park.
- It would have a capacity of up to 93,500 acre-feet of water with a surface area of approximately 1,800 acres, of which nearly 200 acres would inundate BLM surface.
- Water would be supplied by existing water rights through the Otero Pipeline.
- Tribal consultation started during previous geotechnical investigations in 2018 and will continue as the full project undergoes NEPA analysis







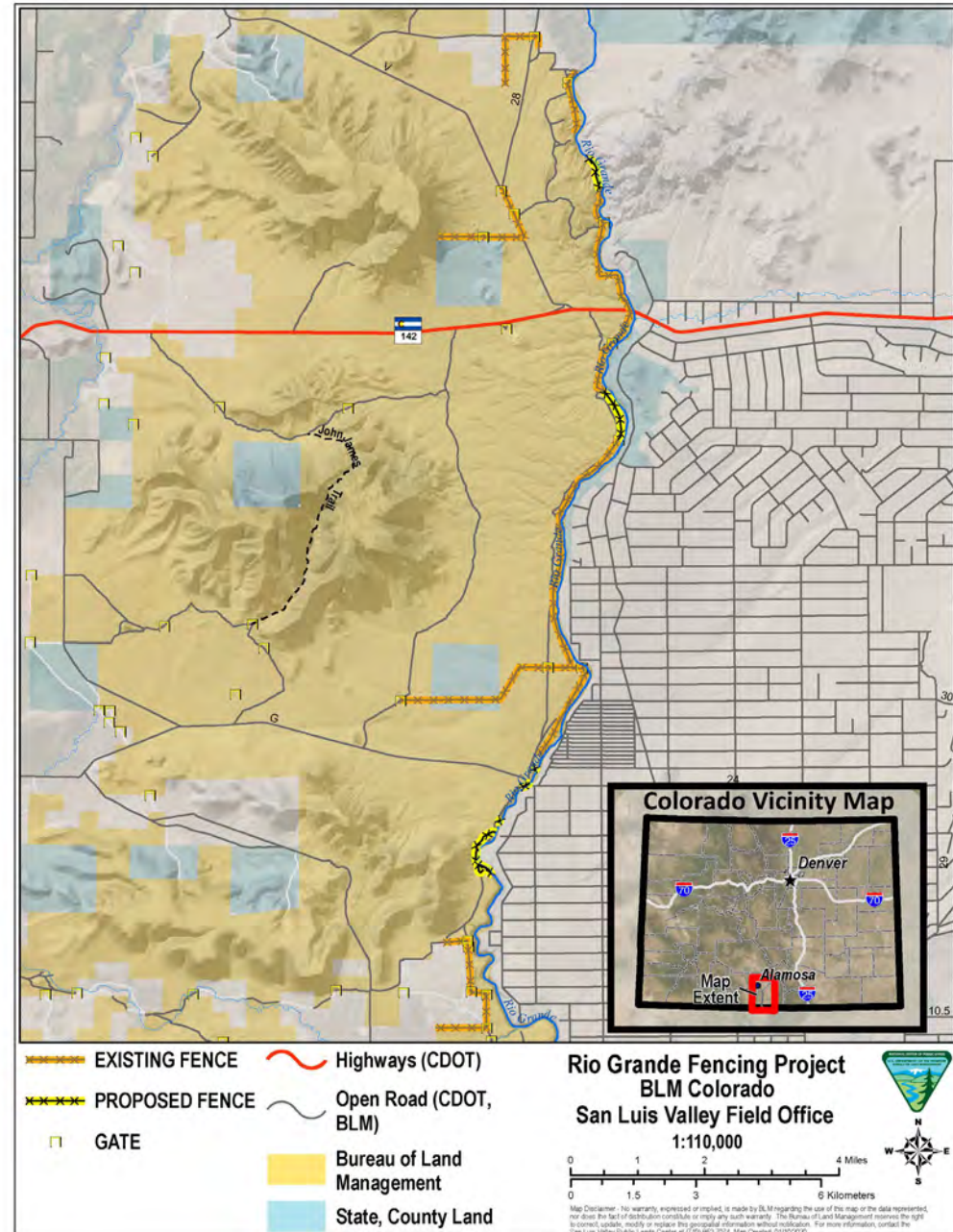
# San Luis Field Office

The San Luis Valley Field Office manages nearly 500,000 acres of public land in Colorado's Rio Grande Basin. The public lands managed by the BLM's San Luis Valley Field Office present myriad ecosystems; from alpine desert to the majestic Sangre de Cristo Wilderness on the eastern side of the Valley.

Dario Archuleta, Acting Field Manager



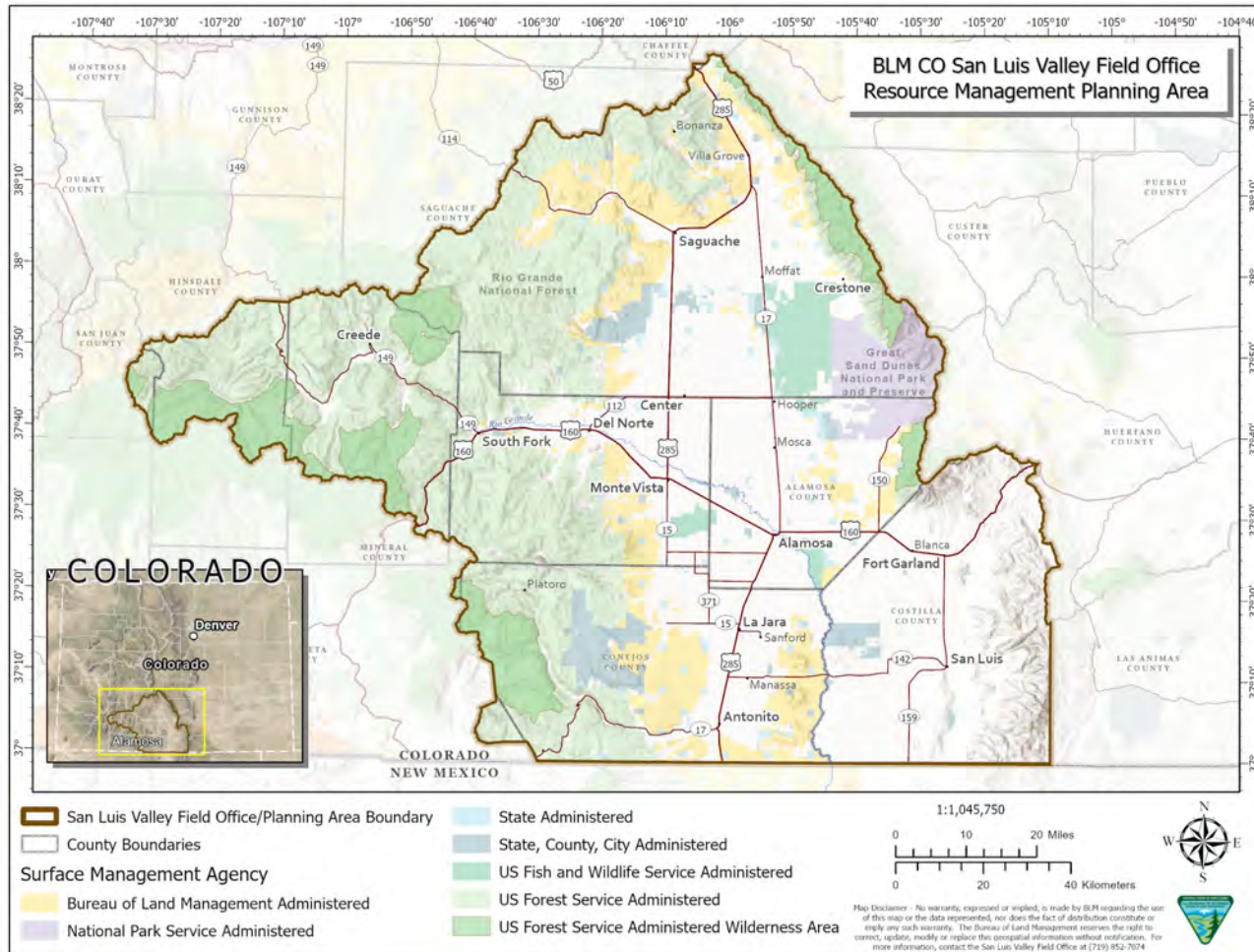
- Unauthorized Use/Trespass on the Lower Rio Grande within the Rio Grande Natural Area.







San Luis Resource Area Resource Management Plan (1991) recommended through a Plan Evaluation process and a Preparation Plan Process to begin a Plan Revision.





# San Luis Valley Field Office: Management Plan Revision.

- Total request is 3.3 million. Schedule proposes Notice of Intent released October 2024 with Record of Decision September 2026 at earliest, likely will slip by a year.
  - SLVFO in coordination w/ COSO **already began data collection with 3 contracts totaling 7 assessments in FY22**
    - Assessments for 1) renewable, 2) mineral potential, 3) Cultural Class I, 4) Paleo, 5) Socioeconomic, 6) Climate Change, 7) Situation Assessment funded by HQ CADR to interview over 50 stakeholders to inform public engagement strategy as well as tribes and pueblos as community members. Potential template for the BLM.
  - Future assessments that SLVFO is considering in FY 23 to help inform a future plan revision include:
    - Wild and Scenic River Report
    - Visual Resources Inventory and Management Recommendations Report
    - Suitability of Allotments and vegetation conditions to determine Carrying Capacity for livestock grazing/wildlife.
    - Carrying capacity of recreation areas to determine recreational use thresholds and SRPs.





## La Jara Creek LWCF Acquisition

The project area is located about 20 miles west of La Jara, Colorado and is bordered to the south from the Colorado/New Mexico state line, to the north by the Conejos/Rio Grande county line, to the west by the Forest Service.

Total Acres to acquire by BLM: 22,572 acre

Third Party NGO: Western Rivers Conservancy (WRC)

BLM SLVFO LWCF funding request: \$27,000,000, with the project being broken down into 3 parcels at approximately \$9,000,000 per parcel.

The La Jara Creek Parcel Acquisition is a collaborative multi-agency acquisition consisting of a 45,650 acres parcel owned by Colorado State Land Board. The Colorado State Land Board intends to sell this parcel of land wants to keep it available for public uses by selling it to two Federal Agencies (BLM, FS) and a State Agency (CPW) with community and political support. The RGNF would acquire 21,245 acres bordered by FS. The FS has received approved partial funding under a FY23 LWCF nomination for this acquisition.

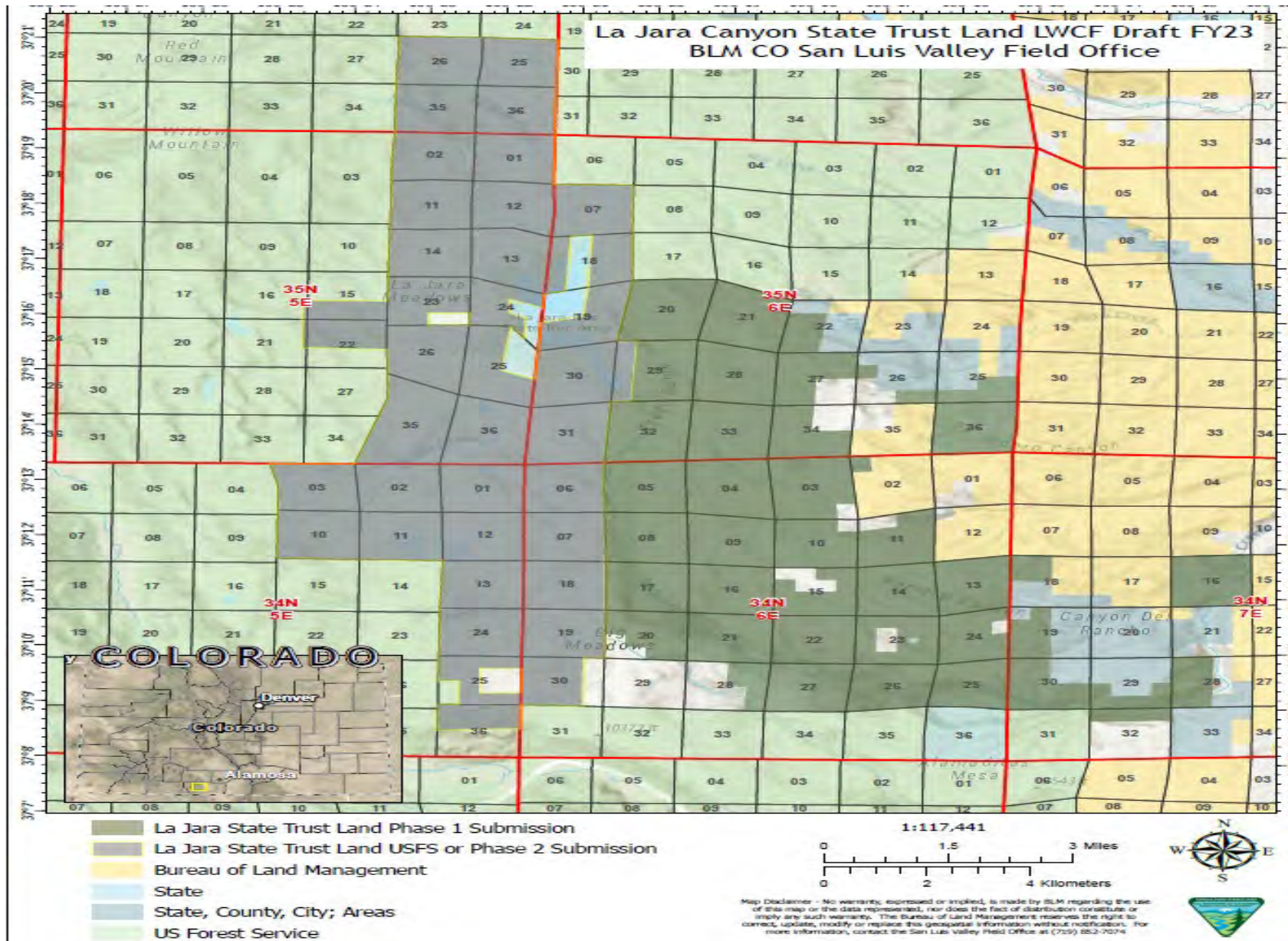


- The proposed acquisition meets the Biden Administrations initiatives for 30x30, Justice40, connecting with communities, and conserves landscapes for wildlife migration corridors and movement.
- It supports environmental justice communities in the Region allowing for access and traditional uses and reduces future impacts from climate change.
- The proposed acquisition puts this parcel of land into public ownership and aligns current federal management designations.
- Reduce ownership fragmentation and enhance recreation opportunities by eliminating adverse environmental, biological, and cultural impacts to the landscape
- Public benefits would include utilizing this area for traditional and historic uses such as; livestock grazing, firewood gathering, hunting, fishing and piñon nut gathering.
- Enhanced public access increases different types of outdoor activities and experiences for visitors in a resource rich area adjacent to multiple agency designations.
- The need to acquire this property and retain it in the public domain and available for current and traditional uses and provide recreation and sportsman access are leading factors in the partnerships and cooperative management proposed by CPW, USFS, BLM, USFWS, and Conejos County government.
- If sold to private entities this area will be developed or closed to public access and uses.

In 2022 the SLVFO submitted an LWCF Core (2024) nomination packet and a Rec Access (2023) nomination packet for the acquisition. We are just waiting to hear back if we were nominated for funding.



U.S. Department of the Interior  
Bureau of Land Management





# *Sangre de Cristo Dark Sky Reserve*

Photo: Mike Pach



# Coalition formed in 2019

Working towards achieving Dark Sky Reserve certification from the International Dark-sky Association

## Some of the partners include:

BLM- San Luis Valley and Royal Gorge Field Offices

USFS- Rio Grande and Pike/San Isabel National Forests

USFWS- San Luis Valley NWR Complex

NPS- Great Sand Dunes National Park

SLVGO!-San Luis Valley Great Outdoors

Town of Crestone

Orient Land Trust



# Sangre de Cristo Dark Sky Reserve



## **Goals of the coalition:**

- Promote Astro-tourism, enhancing local economies.
- Promote the connection to nature and enjoyment of the night sky.
- Promote protection of the night-time environment.
- Encourage land administrators, surrounding communities, and private interests to identify dark skies as a valuable resource in need of proactive protection.

# Reserve Statistics

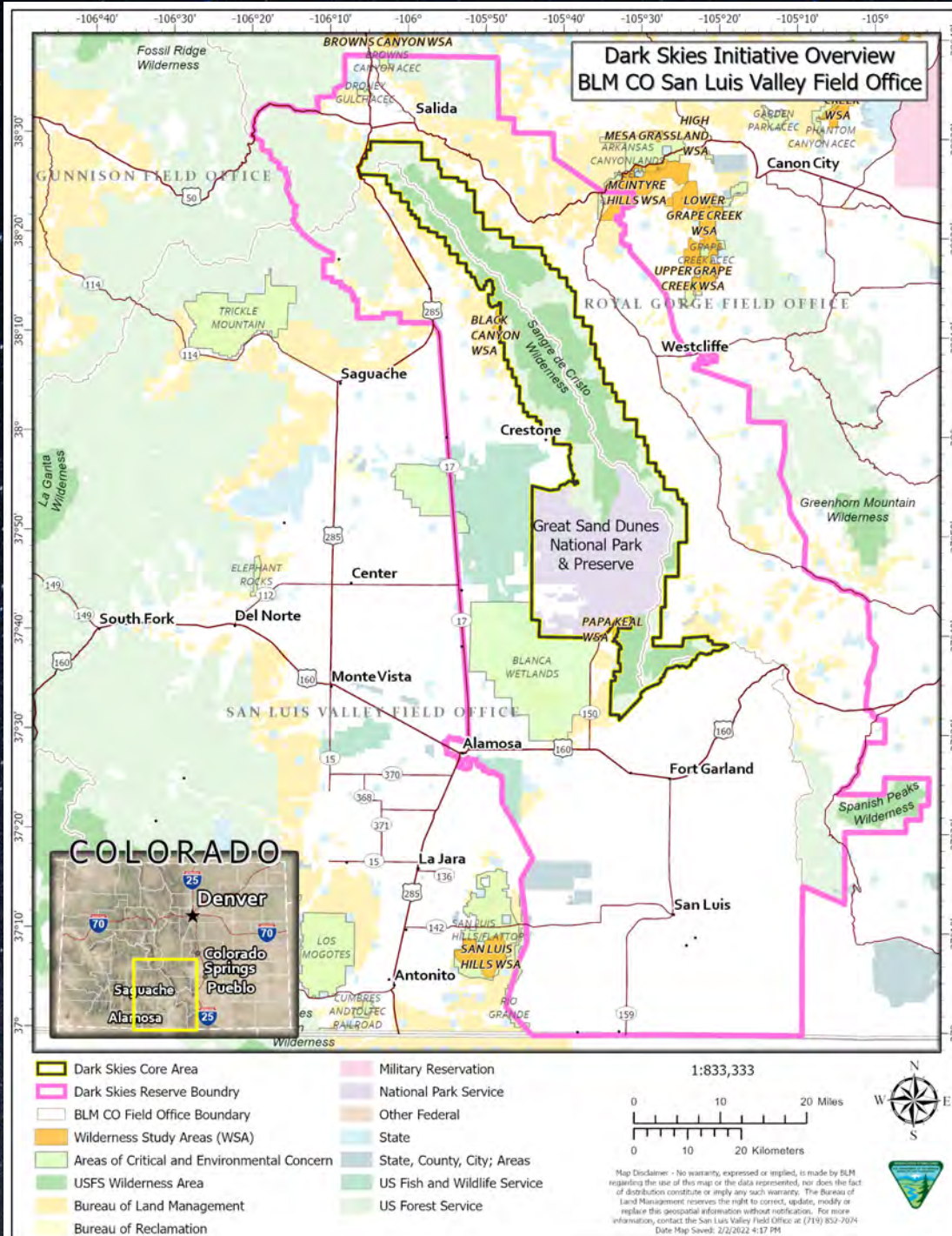
- Proposed reserve- 2,706,502 ac.
- BLM lands - 273,282 ac. – (10.1%)
- SLVFO - 99,831 ac.
- RGFO -173,447 ac.

No BLM lands are in the core of the reserve. All BLM lands are in the peripheral zone.

- USFS - 520,177 ac
- NPS - 136,493 ac.
- USFW lands – 97,463 ac.
- State lands – 57,894 ac.
- Private lands – 1,621,193 ac. – (60%)









# Night Sky Lighting Facts

- 8 out of 10 people live under a light polluted night sky, unable to experience the milky way.
- Outdoor lighting accounts for ~80% of global energy use, 60% of that light is wasted. (Wasted lighting is lighting that emits too much light or shines when and where it's not needed.)
- 30% of outdoor light is wasted in the United States, with a cost of almost 7 billion dollars annually.
- Brighter doesn't mean safer - glare from undirected lighting can obscure vision.



# Work in progress

Finalizing MOUs with partners

Developing Lighting Management Plan

Preparing application for Reserve certification

Continue public outreach





Questions?

# Break







# RAC Training and Elections Prep







**OBJECTIVES AND SCOPE OF ACTIVITIES:** The Council will serve in an advisory capacity concerning the planning and management of the public land resources located within BLM's Rocky Mountain District (encompassing the Royal Gorge and San Luis Valley field offices).

**DESCRIPTION OF DUTIES:** Council duties and responsibilities, where applicable, are as follows:

- Develop recommendations for BLM with respect to the land use planning, classification, retention, management, and disposal of the public lands
- Make recommendations regarding a standard amenity recreation fee or an expanded amenity recreation fee,
  - The implementation of a standard amenity recreation fee or an expanded amenity recreation fee or the establishment of a specific recreation fee site;
  - The elimination of a standard amenity recreation fee or an expanded amenity recreation fee; or
  - The expansion or limitation of the recreation fee program.
  - At the conclusion of each meeting or shortly thereafter, provide a detailed recommendation report, including meeting minutes, to the DFO.

**ESTIMATED NUMBER AND FREQUENCY OF MEETINGS:** Meet approximately two to four times annually. The Council will be comprised of 15 members distributed in a balanced fashion among the three interest groups. Members will be appointed to the Council to serve 3-year terms.

**RECORDKEEPING:** These records shall be available for public inspection and copying, subject to the Freedom of Information Act (5 U.S.C. 552).



## Roles and Responsibility of the Chairperson

The board chair is responsible for leading the board. This position demands exceptional commitment to the organization, first-rate leadership qualities, and personal integrity.

No board can function without a competent board chair. Holding this position requires specific skills that help to accomplish the above duties. For instance, keeping meetings on track requires a high level of productivity and the ability to be assertive. To ensure harmony on the board, you need to be able to communicate efficiently and compromise when necessary. Further, the board chair needs to value fellow board members and promote collaboration in all situations.

**Above all, the board chair needs to remember that his or her primary role is to help the board lead in ensuring a sound future for the organization.** Please consider self - nomination for the role or who among your peers would do well and we will work on an election at our next meeting.



## Leader of the board

To function effectively, groups need a leader. A board leader is approachable and available. He or she is objective and listens actively. He or she needs to be a strategist, knowledgeable about the organization and board practices, a coach, and a conciliator. Finally, he or she must be respected in the community. The chair most commonly performs the following functions:

- Serves as the contact point for every board member on board issues.
- Sets goals and objectives for the board and ensures that they are met.
- Ensures that all board members are involved in committee activities; assigns committee chairs.
- Motivates board members to attend meetings. Assisting in recruiting, welcoming and onboarding new members





## Facilitator of board meetings

One of the trickiest responsibilities of a chair is to run effective and productive board meetings. Effective meeting facilitators must be able to

- create a purposeful agenda in collaboration with the Designated Federal Official and follow it
- know how to run a less formal and productive meeting
- engage each board member in deliberation
- control dominating or out-of-line behavior during meetings

## Should the chair vote?

The chair has the same right to vote as other board members.



U.S. Department of the Interior  
Bureau of Land Management

**Time for us to take Public Comments**



U.S. Department of the Interior  
Bureau of Land Management

# Closing Remarks

Your Public Lands – 245 Million Acres of Possibilities

## Q&A



*Please drop your questions in the chat or raise your hand*





## **Day 2**

- |            |  |
|------------|--|
| 8:00 a.m.  | <b>Meeting begins</b>                                  |
| 8:10 a.m.  | <b>BLM program presentation</b>                        |
| 9:00 a.m.  | <b>Field Trip – RGFO Rec Sites</b>                     |
| 12:00 p.m. | <b>Lunch in Canon City</b>                             |
| 1:00 p.m.  | <b>Continue Field Trip</b>                             |
| 4:30 p.m.  | <b>Return to Royal Gorge Field Office</b>              |
| 4:30 p.m.  | <b>Closing Remarks, bin items, and open discussion</b> |
| 5:00 p.m.  | <b>Adjourn</b>   |



U.S. Department of the Interior  
Bureau of Land Management

# Recreation in BLM







U.S. Department of the Interior  
Bureau of Land Management

# **Recreation in BLM**

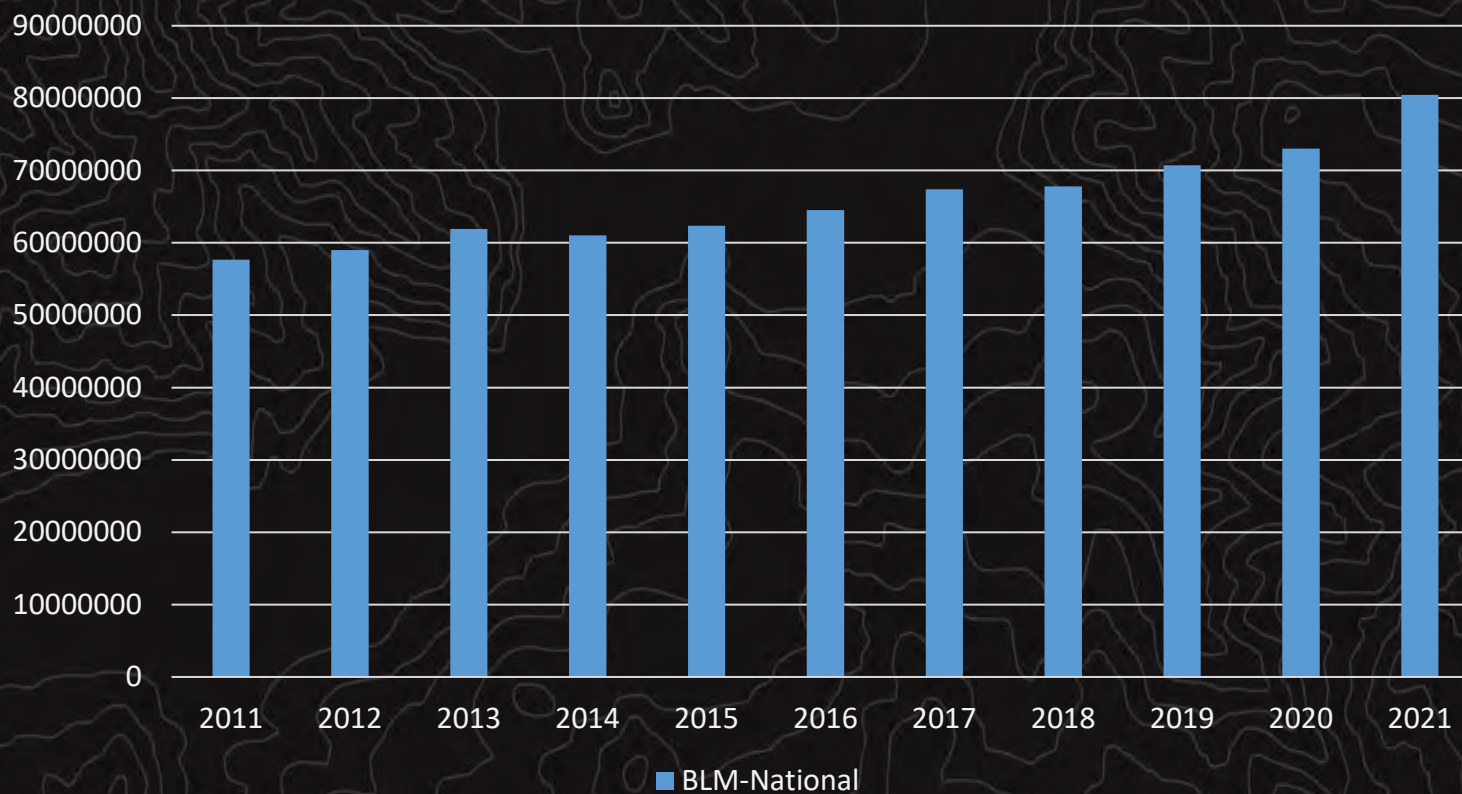
**Kalem Lenard**  
**Assistant Field Manager/**  
**Browns Canyon National Monument Manager**  
**Royal Gorge Field Office**  
**[jlenard@blm.gov](mailto:jlenard@blm.gov)**  
**719-433-8486**





# Trends in Recreation

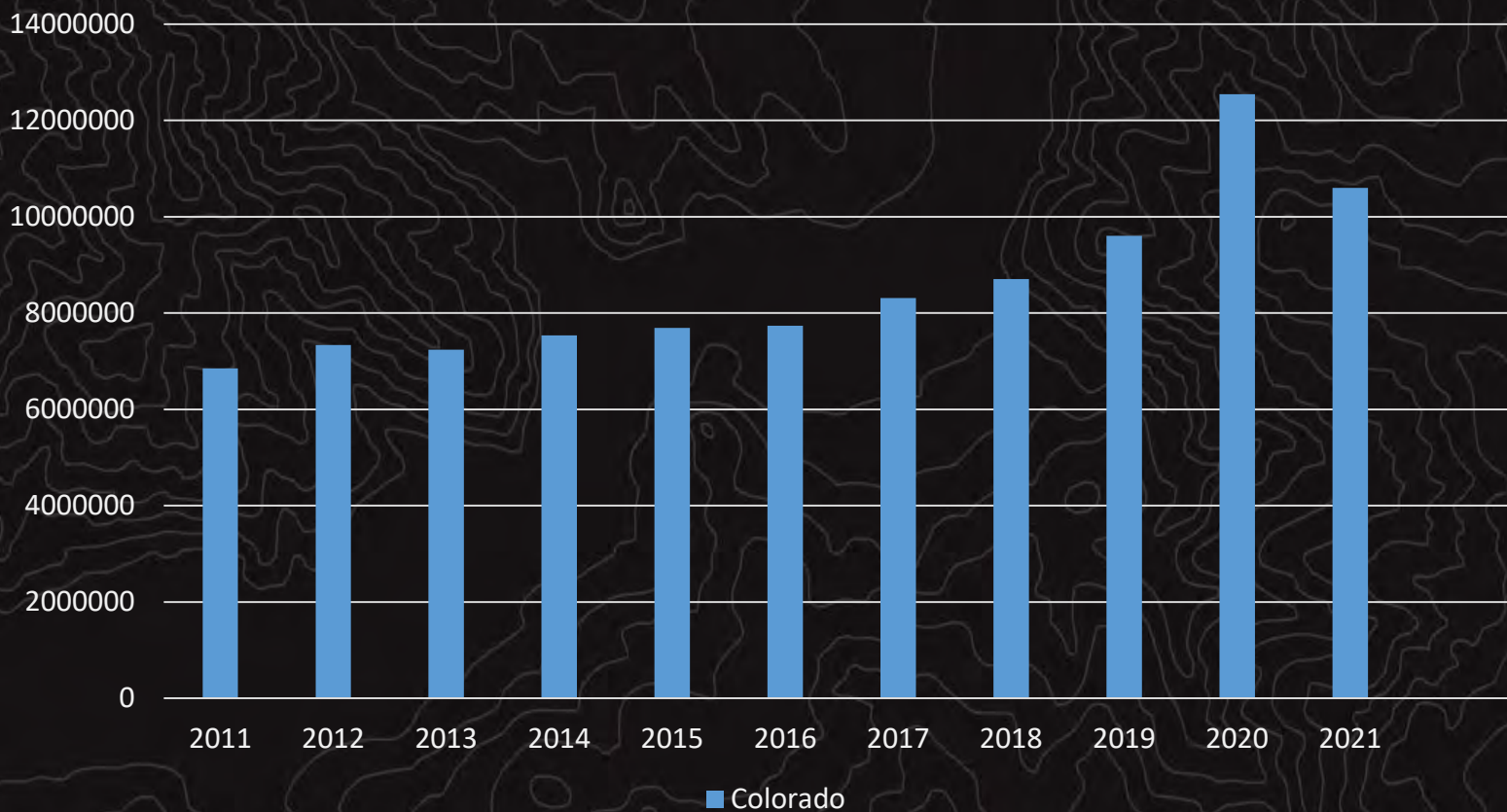
BLM-National Visitation 2011 – 2021  
25% Increase





## BLM-Colorado Visitation 2011 – 2021

36% Increase

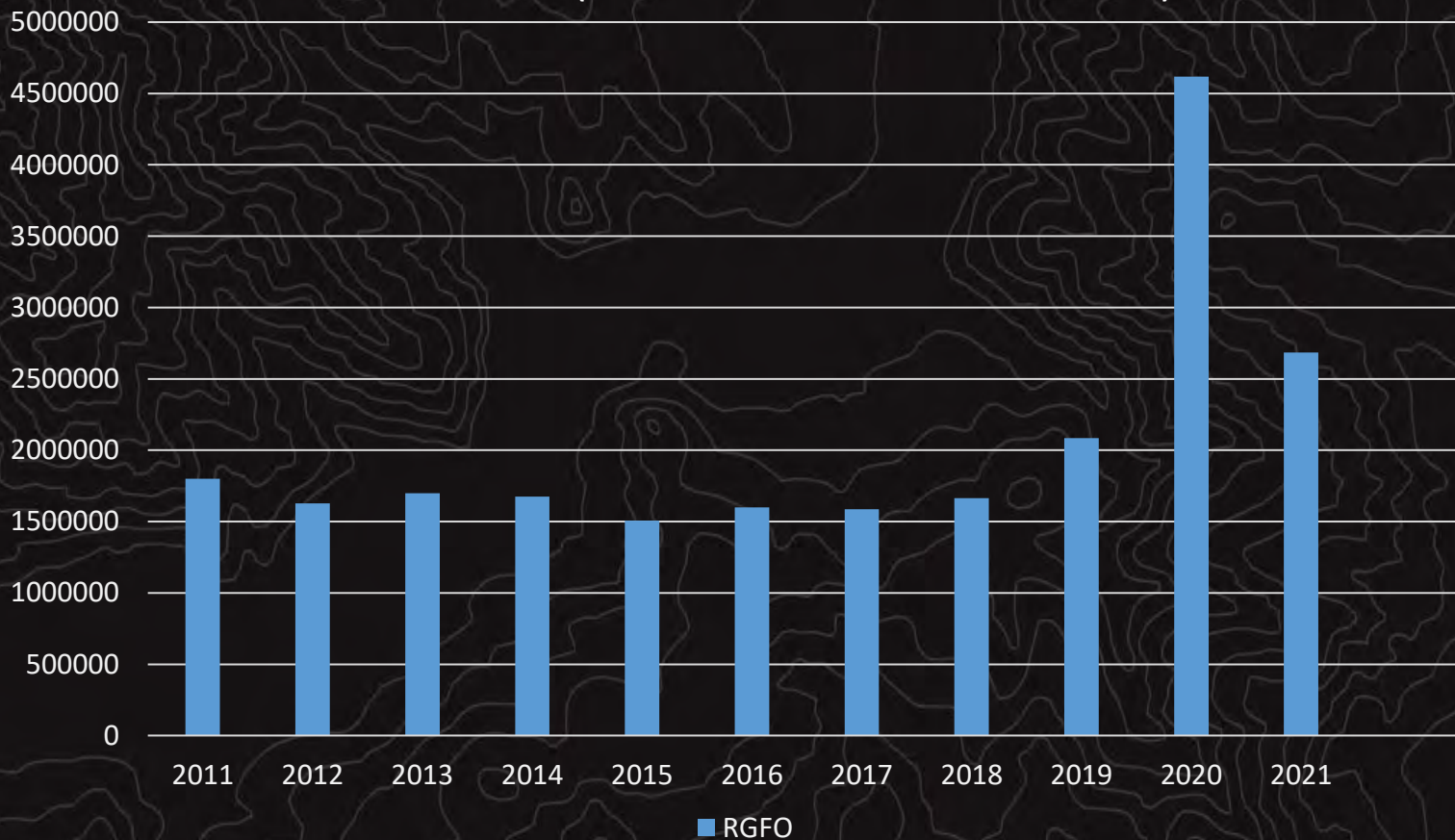






## BLM-Royal Gorge Field Office Visitation 2011 – 2021

33% Increase (most increase started in 2018)

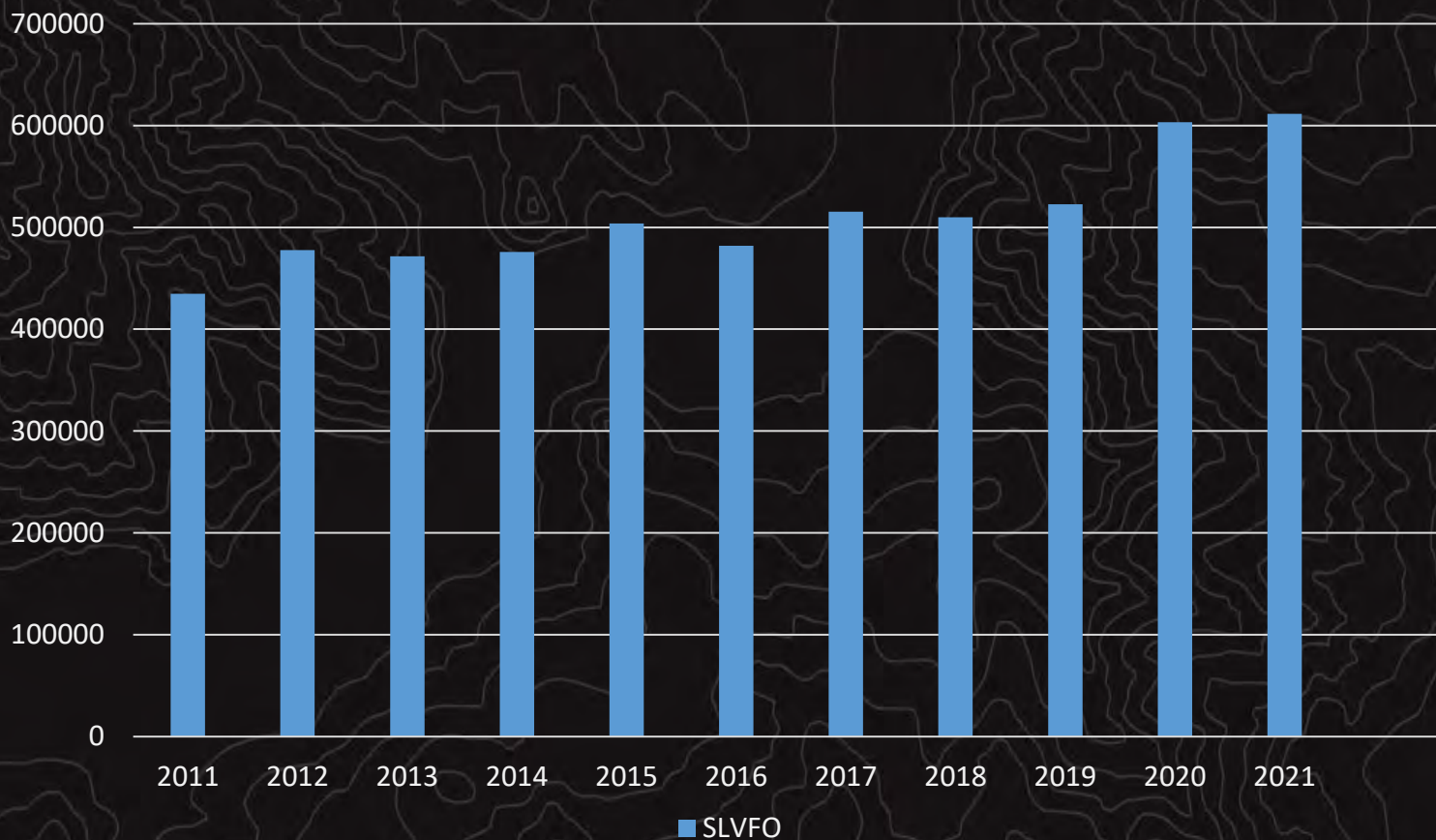






## BLM-San Luis Valley Field Office Visitation 2011 – 2021

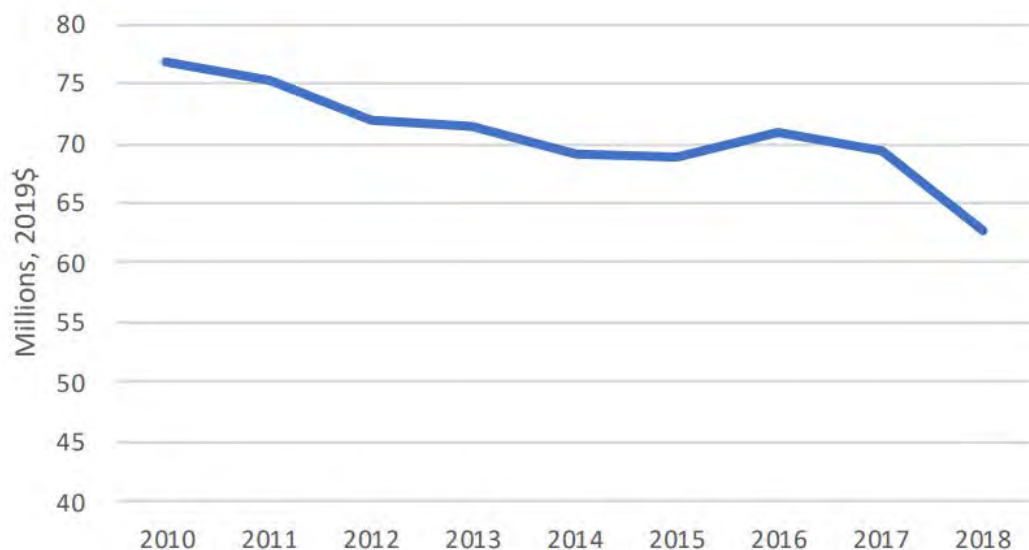
29% Increase





# Trends-Decreasing Budget

## BLM Recreation Budget



- 18%

- \$14 million

4% of total budget



## Trends – Increased Participation

## The Many Benefits of Recreation



STIMULATE  
LOCAL  
BUSINESS



## ATTRACT AND RETAIN TALENT

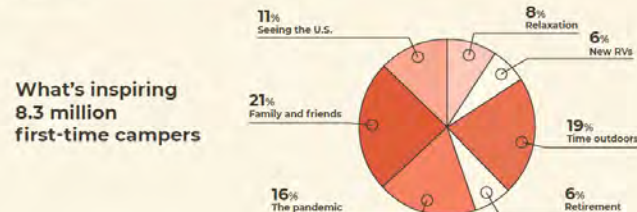


QUALITY  
OF LIFE,  
HEALTH

### The growing camping community

## First-time campers on the rise

The camping community is nothing if not resilient. While the pandemic uprooted so many aspects of everyday life, it also served as an inspiration for new campers to pack up their gear and greet the great outdoors. The No. 1 inspiration for first-time campers: spending time with family and friends.



## Get Healthy in the Outdoors

- 121 state parks
- 2.2 million acres state forest
- 5,700 local parks
- > 11,100 miles of trails

Regular outdoor activity:

- PROMOTES weight loss
- REDUCES arthritis pain
- LOWERS blood pressure



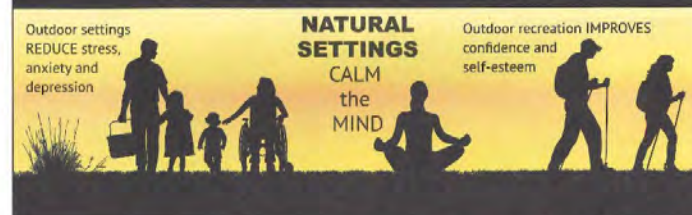
Outdoor activity can:  
LOWER the risk of diabetes,  
certain cancers, osteoporosis, and  
cardiovascular disease



Outdoor settings  
REDUCE stress,  
anxiety and  
depression

**NATURAL  
SETTINGS**  
CALM  
the  
MIND

Outdoor recreation IMPROVES confidence and self-esteem



## #1 BENEFIT of Outdoor Activity: STRESS Reduction

**3/4** of Pennsylvanians believe PARKS, TRAILS, and OPEN SPACES are an essential part of their healthcare system

### Outdoor recreation IMPROVES memory and creativity

### Outdoor activity RELAXES



**#1 Outdoor Recreation: WALKING**





# Trends-Increased Impacts; Social

**3x** harder to book a campground  
in 2021 than pre-pandemic

The campground shortage

**The battle for  
campground bookings**

An infographic with a green grass background at the top. It features a large white "3x" followed by the text "harder to book a campground in 2021 than pre-pandemic". Below this, on a white background, is the text "The campground shortage" and "The battle for campground bookings" in red.





# Trends-Increased Impacts; Resources



Trash piling up in Red Rock Canyon, Nevada, ancestral lands of Southern Paiute and News (Western Shoshone) © Irene Yee





# Trends-Increased Management



HIKE HANGING LAKE: PERMITS & INFORMATION



## Record traffic in South Platte forest district spurs first-ever designated camping plan

Pike National Forest district is converting 340 dispersed campsites into reserved, fee sites in a pilot program that mirrors reservation systems installed at other popular locations on public lands.

The Pike National Forest's South Platte Ranger District has seen record traffic this summer, with many campers in violation of regulations. The district has installed a first-come program that converts those dispersed campers into fee campsites. (Courtesy, U.S. Forest Service)



## RECREATION

## Forest Service confronts a popular hot springs' overuse

*Rangers tackle the conundrum of protecting loved-to-death wilderness.*

Rebecca Worby | NEWS | Aug. 17, 2017 |

f t e PRINT





# Trends-Non-Recreation Challenges







U.S. Department of the Interior  
Bureau of Land Management

# Questions?

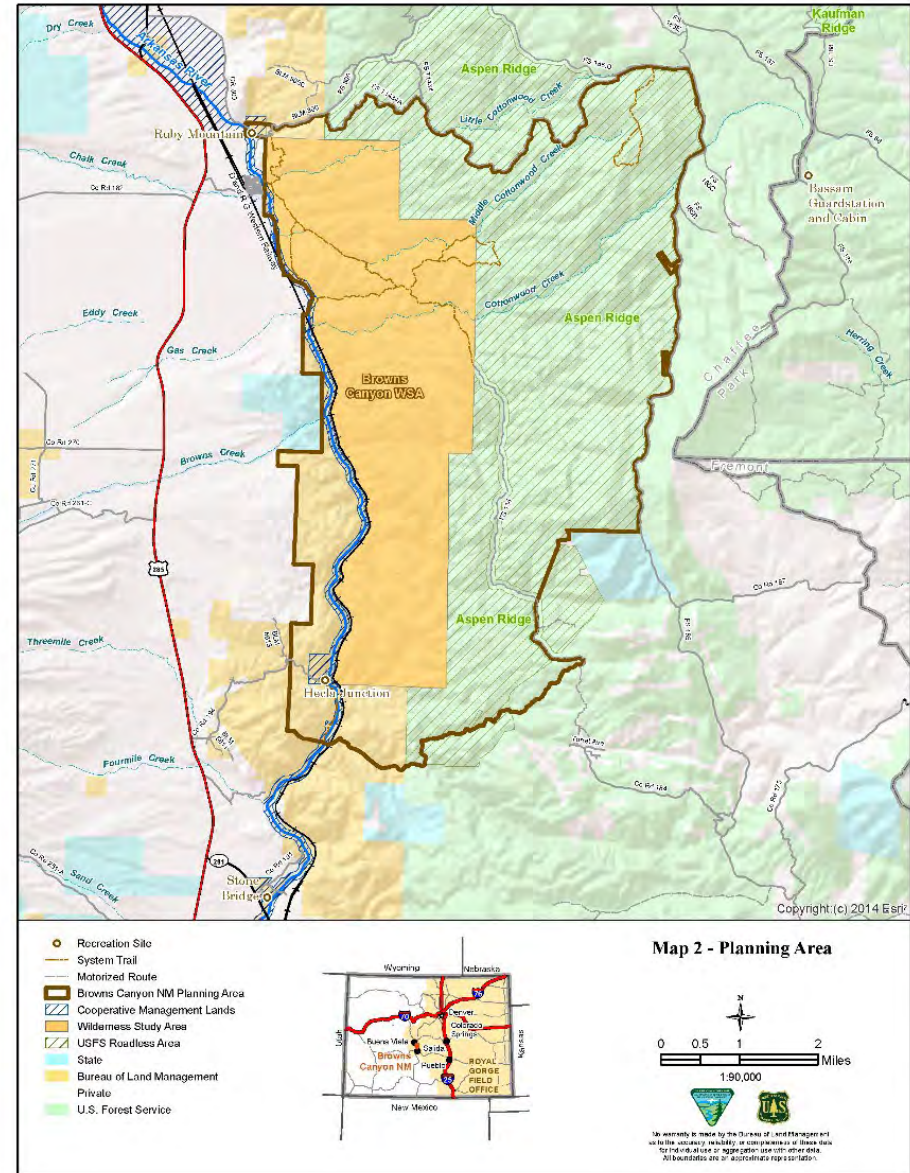
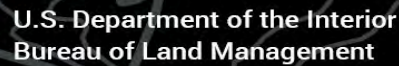
**Kalem Lenard**  
**Assistant Field Manager/  
Browns Canyon National Monument Manager**  
**Royal Gorge Field Office**  
**[jlenard@blm.gov](mailto:jlenard@blm.gov)**  
**719-433-8486**



### **Day 3**

- |            |   |
|------------|---|
| 8:00 a.m.  | <b>Meeting begins</b>                         |
| 8:10 a.m.  | <b>Browns Canyon National Monument update</b> |
| 9:00 a.m.  | <b>Chaffee County Camping Plan</b>            |
| 9:30 a.m.  | <b>Current recreation trends discussion</b>   |
| 10:15 a.m. | <b>Break</b>                                  |
| 10:30 a.m. | <b>Questions on Program Updates</b>           |
| 11:00 a.m. | <b>Public comments</b>                        |
| 11:30 a.m. | <b>Bin items, and open discussion</b>         |
| 12:00 p.m. | <b>Adjourn</b>                                |







U.S. Department of the Interior  
Bureau of Land Management

# Chaffee County Camping and Travel Management Plan Overview







U.S. Department of the Interior  
Bureau of Land Management

# BLM Royal Gorge Field Office Chaffee County











# Plan Introduction - Two Components

## Travel Management

- 13,000 acres (2% of field office)
- Not covered by previous travel management planning efforts
- Travel limited to “existing routes” and 300’ off existing routes for parking/camping
- Route designation decision necessary to serve as baseline for camping management
- 42.3 miles of BLM routes inventoried
- 15.3 miles were determined to not have legal public access (blocked by private or FS land)



## Camping Management

- 38,200 acres (6% of field office) and includes the 13,000 acres above
- Previous travel plans allow 100’ off designated roads for parking/camping
- No regulations in place regarding disposal of human waste or fire pans
- Office received increased complaints and requests to address impacts from camping in numerous areas.



## Public Input

- **Pre-Scoping in April – May 2021**
  - BLM solicited input on both components of the plan; travel routes and camping management
  - 3 action alternatives developed based on input received
- **Scoping December 2021 – January 2022**
  - BLM solicited input on the three alternatives as well as issues that should be addressed in the National Environmental Policy Act process.
  - Over 400 comments received
  - Incorporated into Alternatives analyzed in an Environmental Assessment, including a Preferred Alternative.
  - No Action Alternative – educate on ethics, vehicle controls to protect resources
- **Comment on Environmental Assessment – Anticipated Early September**





## Action Alternatives – Travel Management

Miles	Proposed Action	Alternative B	Alternative C
Open	9	17.5	0
Seasonal Restriction*	5.4	0.7	1
Closed/Admin Only	12.6	8.8	25.9
New Camping Roads	2	2	1.5
No Legal Public Access**	15.3	15.3	15.3

\*Dates vary depending upon wildlife habitat

\*\* Route with no legal public access are by default closed or administrative use only to prevent exclusive motorized use by adjacent private landowners. Does allow for revisiting designations if legal public access is obtained.



# **Action Alternatives – Travel Management**

## **Maps of Sub-Units and Alternatives**





## Camping Management – Common to All Action Alternatives

### Limit camping to designated sites only

- Designated sites would transition to include a signed/numbered post and possibly a fire ring
- # of sites and location is approximate and varies by alternative

### Evaluate existing and potential campsites against criteria

- Camp spur is reasonable length
- Does not contain historic properties or sensitive plants
- Reasonably spaced from other sites
- Containment is feasible
- Relatively flat
- Not impacting water/riparian habitat

### Regulations – fire pans and human waste

Walk-in camping allowed ½ mile or more from designated routes

Consider options for overflow camping demand







## Education

- Engage partners and volunteers to educate visitors on camping ethics and regulations and explore the use of volunteer camping hosts where appropriate
- Post regulations and ethics at key portals and entrances
- Work with community partners on the best way to share information about camping regulations, ethics, and location of designated sites depending upon sub-unit and associated settings and objectives.







## Monitoring

- Visitors camping outside of designated campsites or site expansion
- Human waste
- Trash
- Fire Rings
- Staying beyond established limits
- Violations of federal fire regulations
- Demand exceeds supply
- Visitor satisfaction





## Adaptive Management

- Based on monitoring
- Response varies by Alternative and Sub-Unit
- Attempts to try lowest level of management first and assess cause
  - Increased vehicle controls and information
  - Increased education and visitor contacts



- Could eventually scale to additional infrastructure and fees/permits
  - Based on alternative and sub-unit.





### Proposed Action and Alt C

Construct campground loops and designate approximately 100 campsites to accommodate demand in the Shavano Area

Attempt to designate 100% of the number of campsites in each sub-unit

Develop small campground off of CR 371

Expand and propose fee at Turtle Rock Campground

Designate campsites near the Burmac TH and charge a fee

Explore developing a campground in the Methodist Mountain Area

### Alternative B

Construct campground loops and designate approximately 75 campsites to accommodate majority of demand.

Attempt to designate 75% of the number of campsites in each sub-unit

Do not develop small campground off of CR 371

Expand and propose fee at Turtle Rock Campground

Designate campsites near the Burmac TH and charge a fee

Explore developing a campground in the Methodist Mountain Area

## Maps





## Campground Business Plan



- Develop a business plan for all campgrounds (current and potential) within the Royal Gorge Field Office
- Establish a set fee for level of campground development (primitive/developed)
- Includes a new fee at Turtle Rock, increased fee at The Bank and Sand Gulch Campground, and new fees for campgrounds proposed in the Chaffee County Camping Plan or other planning efforts.
- Will be presented to the RAC in the future



# Next Steps

- 30 day public comment period on EA – fall 2022
- 30 day public comment period on Business Plan – fall/winter 2022
- Incorporate comments into EA and issue decision – winter 2022/spring 2023
- Present Business Plan to RAC at next meeting
- Implement summer 2023





U.S. Department of the Interior  
Bureau of Land Management

# Questions?

**Kalem Lenard**  
**Assistant Field Manager/**  
**Browns Canyon National Monument Manager**  
**Royal Gorge Field Office**  
**[jlenard@blm.gov](mailto:jlenard@blm.gov)**  
**719-433-8486**

# Break

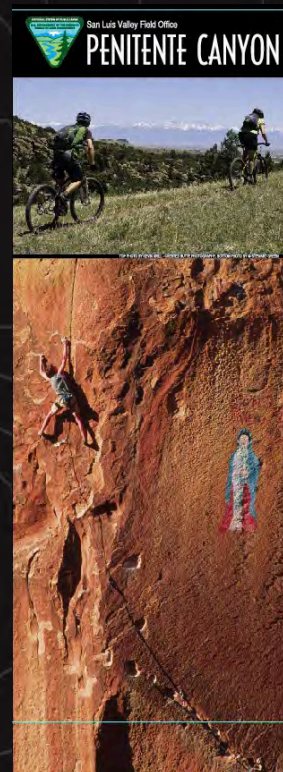
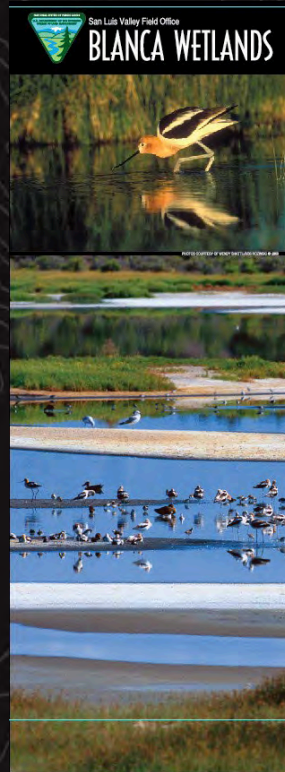
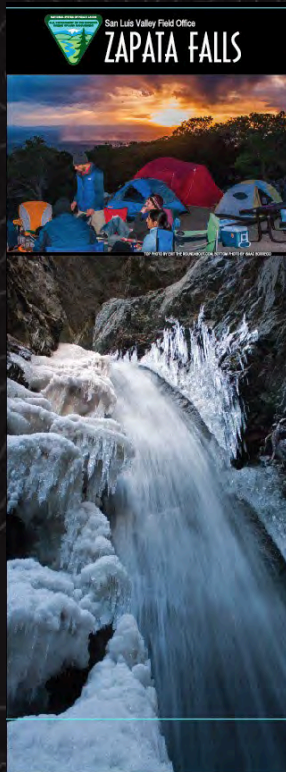






U.S. Department of the Interior  
Bureau of Land Management

# SLVFO Recreation







U.S. Department of the Interior  
Bureau of Land Management

# **Recreation & Visitor Services**

~

# **National Conservation Lands**

**Sean Noonan**  
**Outdoor Recreation Planner**  
**San Luis Valley Field Office**  
**[snoonan@blm.gov](mailto:snoonan@blm.gov)**  
**719-849-3149**



## Trends/Concerns In Recreation

- Population & Changing Climate
- Capacity
- Durability
- Flexibility & Resilience





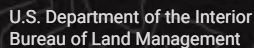


## Partnerships & Opportunities

- SLV's Umbrella or 'Collective Impact' Rec & Conservation Organization
- Serves & Collaborates With:
  - All 18 communities & 6 counties of SLV
  - Local/State/Federal Governments
  - NGO's & Advocacy Organizations
  - Industry/OREC
  - Academia
  - Etc.
- CPW's Regional Partner
- BLM Connecting with Communities Recreation Strategy

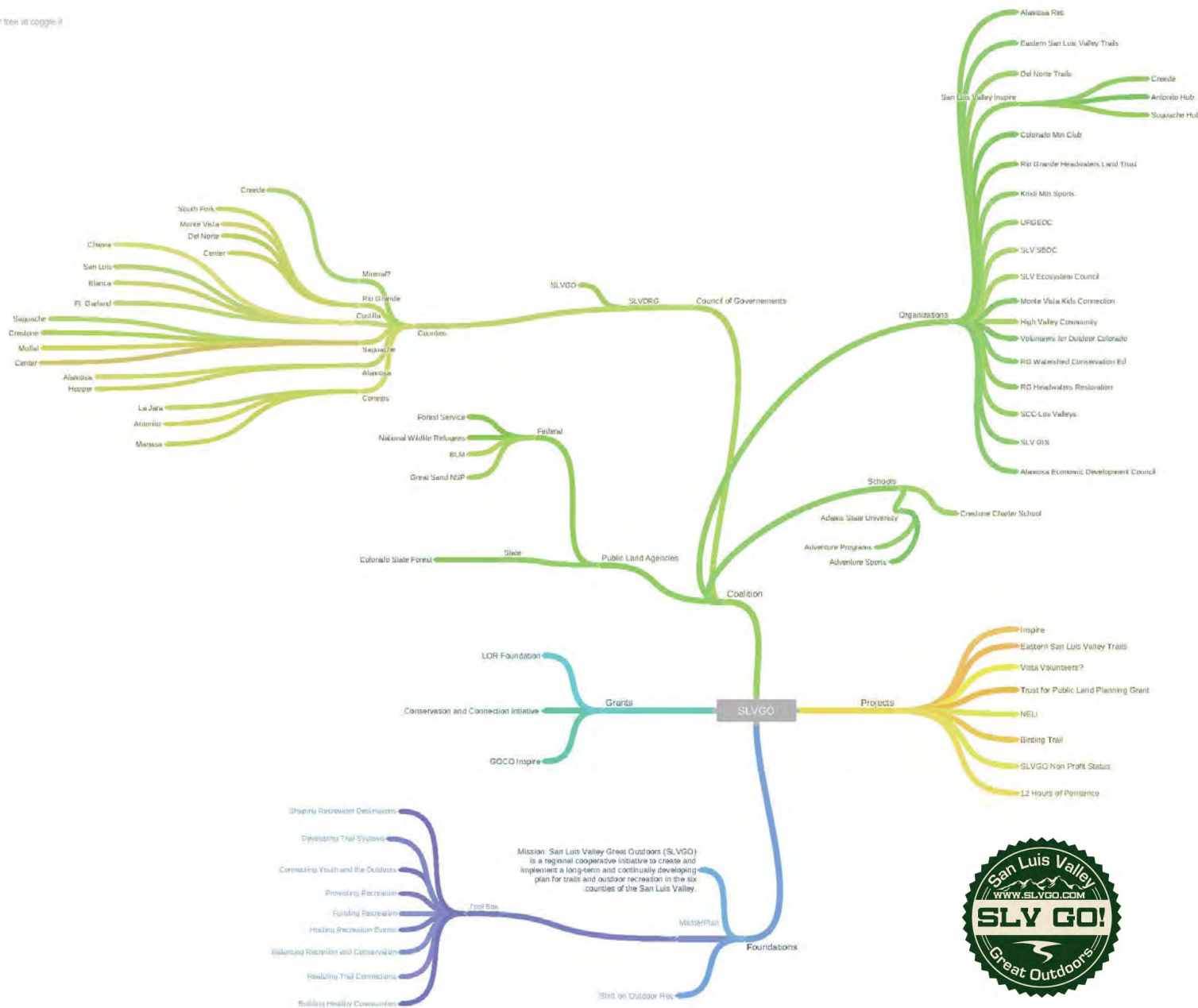






## SLVFO

*coggle*  
made for free at [coggle.it](http://coggle.it)





## Partnerships & Opportunities

- **Who:** Lori McCullough – ED
- **What:** The Great Outdoors Fund (TGOF) is dedicated to expanding equitable access to the outdoors and improving recreation opportunities through public-private partnerships so people of all ages, abilities, and backgrounds can experience and enjoy nature.
- **Where:** Fund an Outdoor Rec-focused project in the RGNA (Rio Grande Natural Area)



<https://thegreatoutdoorsfund.org>





## Partnerships & Opportunities







U.S. Department of the Interior  
Bureau of Land Management

# Questions?

**Sean Noonan**  
**Outdoor Recreation Planner**  
**San Luis Valley Field Office**  
**[snoonan@blm.gov](mailto:snoonan@blm.gov)**  
**719-849-3149**



# Wrap Up

- **Public comments**
- **Bin items, and open discussion**
- **Adjourn**