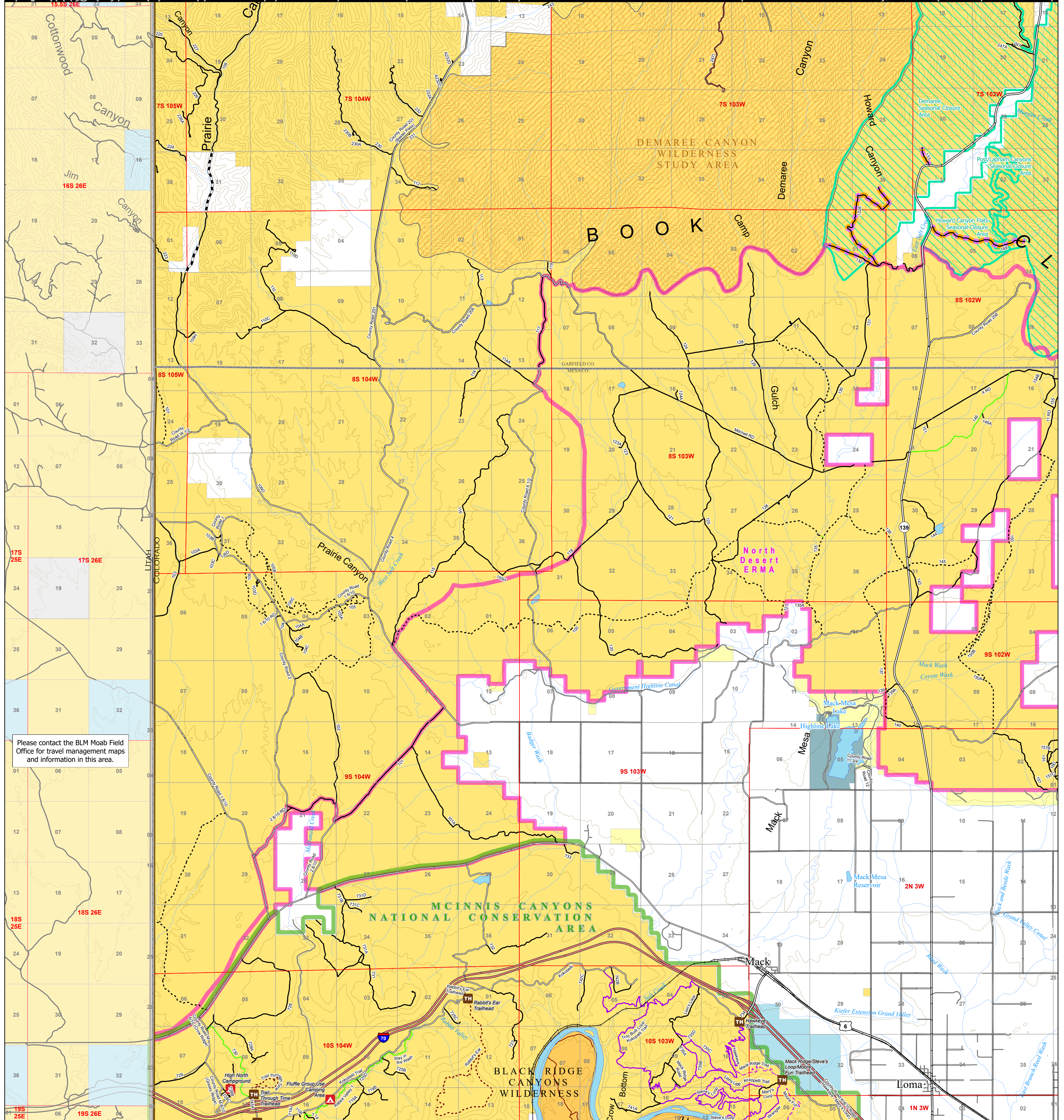




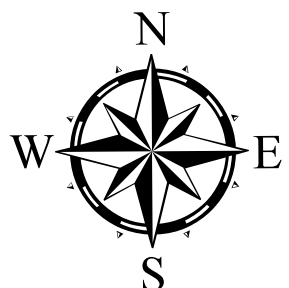
U.S. DEPARTMENT OF THE INTERIOR BUREAU OF LAND MANAGEMENT Grand Junction Field Office

COLORADO

Travel Management Map 8 : Highline



Please contact the BLM Moab Field Office for travel management maps and information in this area.



0 0.5 1 2 Miles

No warranty is made by the Bureau of Land Management as to the accuracy, reliability, or completeness of these data for individual use or aggregate use with other data, or for the purposes not intended by the BLM. Spatial information may not meet National Map Accuracy Standards. This information may be updated without notification.

- Towns
- Campground
- Trailhead
- Interstate Highway
- State and US Highways
- Railroad
- County Maintained Roads
- Routes without BLM jurisdiction
- BLM Road and Trail Designations
- Open to Bikes and Hiking Only (no horses)
- Open to Equestrian and Hiking Only
- Open to Hiking Only

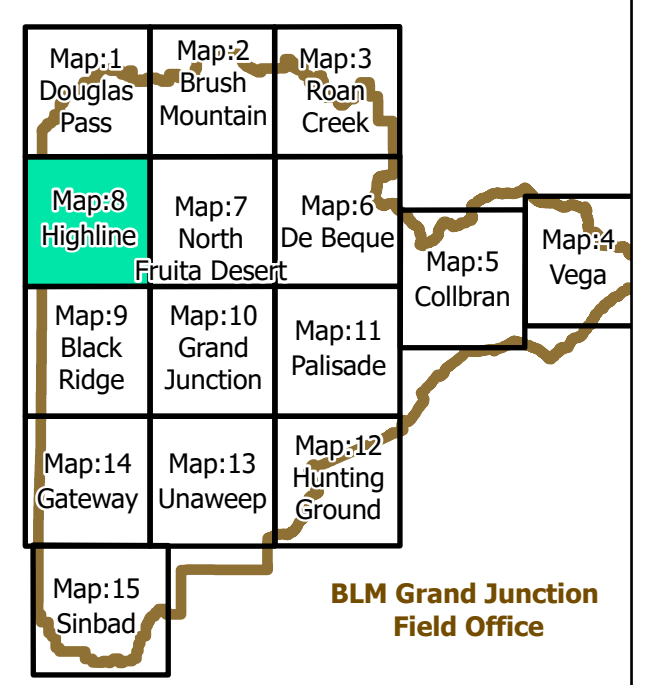
- Open to all modes of transportation
- Open to Motorcycles, Bikes, Hikers, and Equestrians
- Open to ATV (<50 in), Motorcycles, Bikes, Hikers, and Equestrians
- Open to Bikes, Hikers, and Equestrians
- Undesignated
- Prairie Canyon - Public Access
- Routes with seasonal restrictions
- Closed December 1 - May 1
- Seasonal Closure Areas
- County Boundaries
- Extensive Recreation Management Area (ERMA)

- BLM Grand Junction Field Office
- BLM National Monuments and National Conservation Areas
- BLM Wilderness Study Areas
- BLM Wilderness Areas
- Bureau of Land Management
- Bureau of Reclamation
- Private
- State
- State, County, City: Recreation Areas

Note: existing disturbance on the ground not shown on this map is not authorized for travel except foot/horse in most areas unless otherwise noted.

For more detailed recreation maps see the maps for each Special Recreation Management Area (SRMA) and Extensive Recreation Management Areas (ERMA)

Seasonal closure areas:
Demaree : December 1 - May 1, Post/Lapham Canyons : December 1 - May 1



BLM Grand Junction Field Office