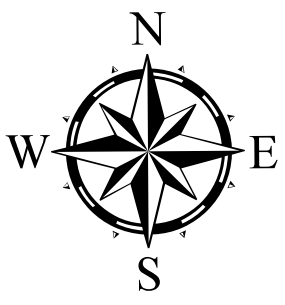
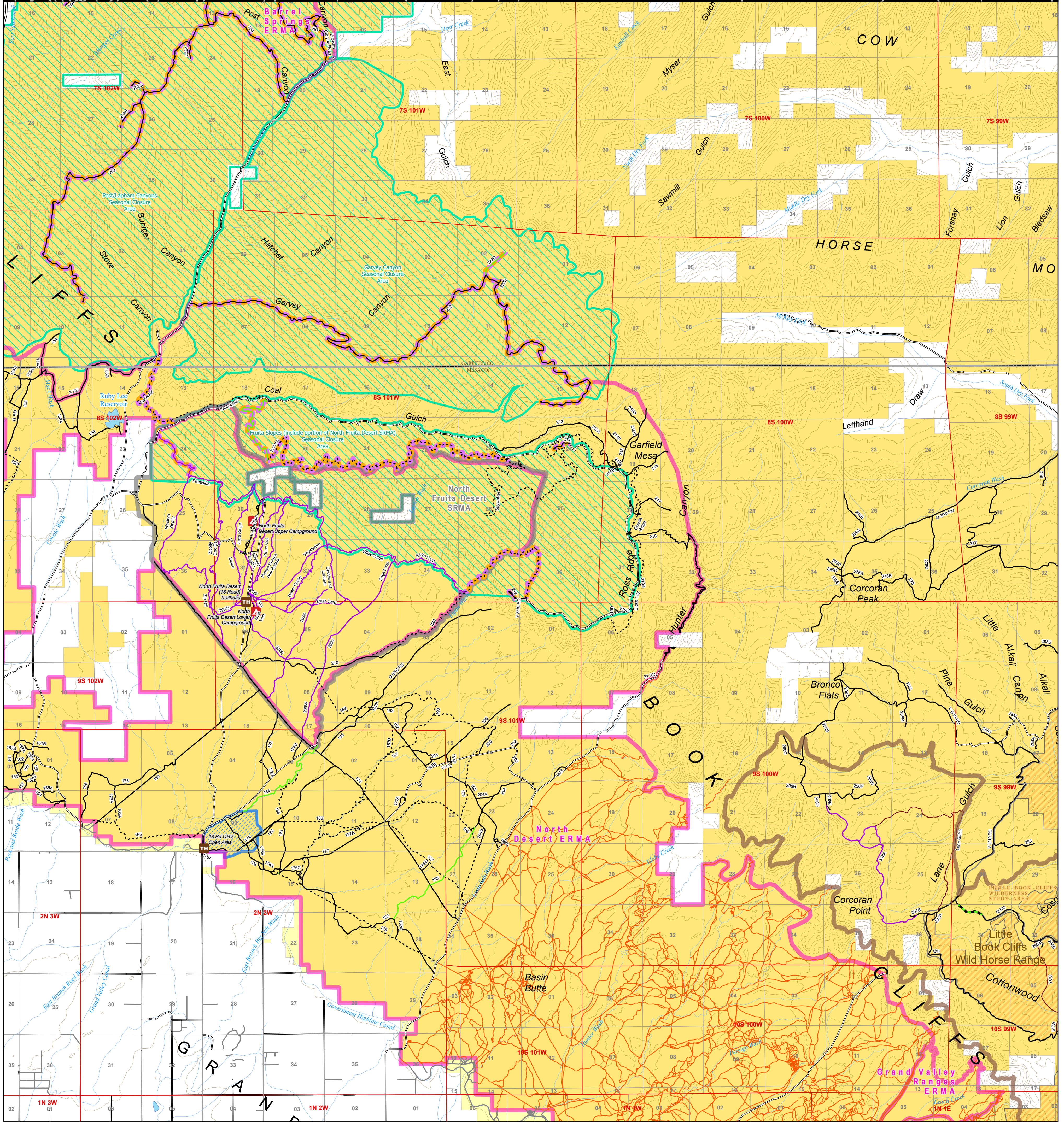




U.S. DEPARTMENT OF THE INTERIOR BUREAU OF LAND MANAGEMENT Grand Junction Field Office

COLORADO

Travel Management Map 7 : North Fruita Desert



0 0.5 1 2 Miles

No warranty is made by the Bureau of Land Management as to the accuracy, reliability, or completeness of these data for individual use or aggregate use with other data, or for the purposes not intended by the BLM. Spatial information may not meet National Map Accuracy Standards. This information may be updated without notification.

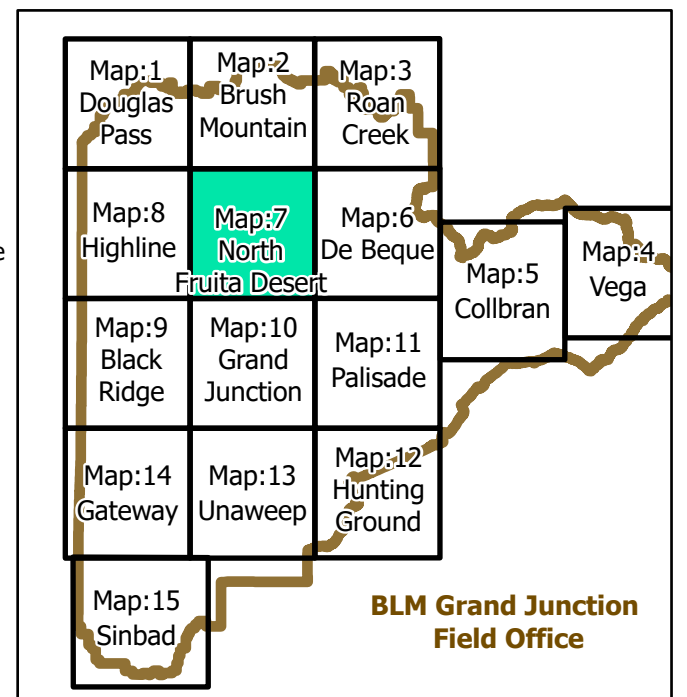
- Campground
- Trailhead
- State and US Highways
- County Maintained Roads
- Routes without BLM jurisdiction
- BLM Road and Trail Designations
- Open to Equestrian and Hiking Only
- Open to all modes of transportation
- Open to Motorcycles, Bikes, Hikers, and Equestrians
- Open to ATV (<50 in), Motorcycles, Bikes, Hikers, and Equestrians
- Open to Bikes, Hikers, and Equestrians
- Current use will continue until route is designated
- Undesignated
- Public easement across private land
- Routes with seasonal restrictions
- Closed December 1 - May 1
- Seasonal Closure Areas
- Open to all Modes of Travel
- County Boundaries
- Extensive Recreation Management Area (ERMA)

- Special Recreation Management Area (SRMA)
- BLM Grand Junction Field Office
- Wild Horse and Burro Herd Management Areas
- BLM Wilderness Study Areas
- Bureau of Land Management
- Bureau of Reclamation
- Private

Note: existing disturbance on the ground not shown on this map is not authorized for travel except foot/horse in most areas unless otherwise noted.

For more detailed recreation maps see the maps for each Special Recreation Management Area (SRMA) and Extensive Recreation Management Areas (ERMA)

Seasonal closure areas:
Fruita Slopes : December 1 - May 1, Post/Lapham Canyons : December 1 - May 1, Garvey Canyon : December 1 - May 1



BLM Grand Junction Field Office