



United States Department of the Interior

BUREAU OF LAND MANAGEMENT
Medford District Office
3040 Biddle Road, Medford, Oregon 97504
<http://www.blm.gov>



EMERGENCY CLOSURE OF PUBLIC LANDS

AGENCY: Bureau of Land Management, Medford District, Oregon.

ACTION: Temporary Closure of Public Lands

SUMMARY: Pursuant to 43 CFR 9268.3(d) and 43 CFR 8364.1, the Bureau of Land Management (BLM) hereby provides notice that effective immediately, the public lands described below are closed to all forms of public access. This action is in response to the Rum Creek Fire currently active in the area. The BLM is closing public lands in order to ensure public safety, reduce conflicts with emergency crews and allow for fire suppression and burned area site recovery.

AFFECTED AREA: All BLM-managed public lands, including the Rogue River and Rogue River Trail between Grave Creek and Russian Creek. The following BLM administered Lands are affected by this closure:

T34S R07W
Section 1
T34S R07W
Section 2
T34S R07W
Section 5

T33S R07W
Section 32
T33S R07W
Section 33
T33S R07W
Section 34
T33S R07W
Section 35

Please see attached map.

DATES: This closure is effective immediately and will remain in effect until such time as conditions allow for safe use of the public lands.

FOR FURTHER INFORMATION CONTACT: Kyle Sullivan, Public Affairs Specialist, 3040 Biddle Road, Medford OR 97504, telephone 541-618-2340. This notice and the closure notice is also available online at <https://www.blm.gov/programs/public-safety-and-fire/fire-and-aviation/regional-info/oregon-washington/fire-restrictions>.

DISCUSSION OF THE RULES: The public must not enter the closure area. All uses within the closure area are prohibited. Exceptions to these prohibitions are noted below under Exemptions.

EXEMPTIONS: The following persons are exempt from the provisions of this Order:

1. Any Federal, State, or Local Officer, or member of an organized medical, rescue or firefighting force engaged in fire, emergency, or law enforcement activities, or public utility employees

- engaged in emergency repairs;
- 2. BLM employees, contractors, or agents engaged in official duties;
- 3. Individuals operating within the scope of their official and legitimate governmental duties;
- 4. Individuals with valid existing rights for access (e.g., Reciprocal and Unilateral Right of Way agreement holders, permittees or lease holders, or internal landowners); and
- 5. Parties who carry written approval by the BLM Authorized Officer (Field Manager or District Manager) allowing access to the described public lands.

PENALTIES: Any person who violates this may be tried before a United States Magistrate and fined in accordance with 18 U.S.C. 3571, imprisoned for no more than 12 months, or both. Vehicles found in violation of this order may be removed.

EFFECTIVE: This Order is effective immediately upon signature.

WILLIAM DEAN Digitally signed by WILLIAM DEAN
Date: 2022.08.22 21:25:45 -07'00'

8/22/2022

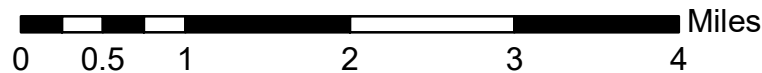
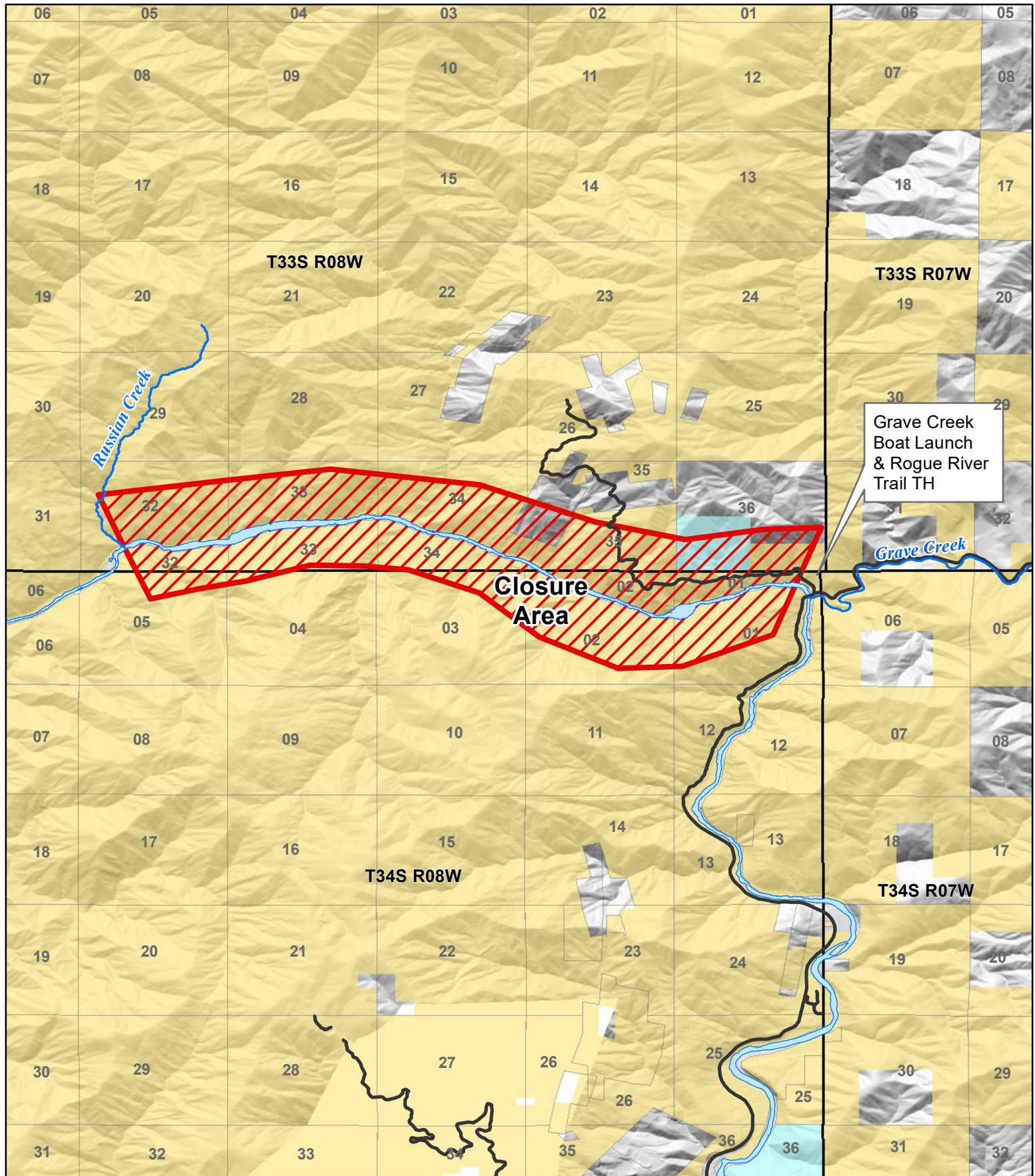
Bill Dean, Grants Pass Field Manger

Date



Rum Creek Fire Closure

Aug. 22, 2022



No warranty is made by the Bureau of Land Management as to the accuracy, reliability, or completeness of these data for individual or aggregate use with other data. Original data were compiled from various sources and may be updated without notification.