

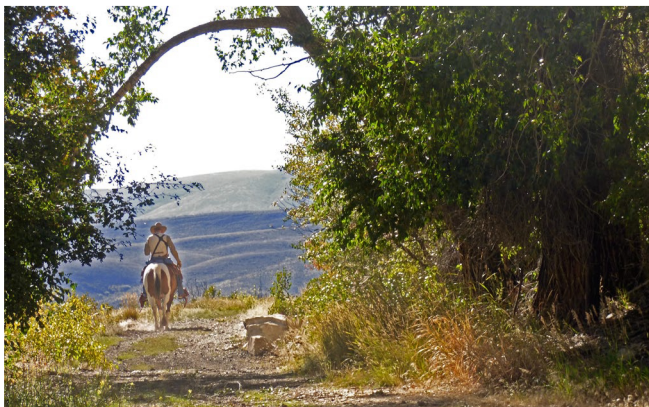


WYOMING

Kemmerer Field Office

Recreation Fee Program Spending & Accomplishment Highlights 2021

Special Recreation Permits



Individual using public land

The Kemmerer Field Office issues permits to local businesses and guides who facilitate visitors experience and use of BLM lands. These permits support the local economy, promote the protection of resources, and allow the public to enjoy public lands with greater safety, knowledge, and comfort. Funds were spent in 2020 towards financial audits of Special Recreation Permit holders, which were ongoing throughout 2021. These audits will ensure that the BLM and the American public receive a fair return for the commercial use of public lands.

XC Ski Trail Maintenance



Skier using the Viva Naughton trail near Kemmerer

The Kemmerer Field Office Recreation Program has maintained Cross Country Ski trails both in the town of Kemmerer and approximately 15 miles north of the town near Viva Naughton Reservoir. These trails provide the local community and visitors with winter recreation opportunities of varying difficulty and terrain. Trails accommodate various users, allowing them to engage with their public lands meaningfully.

Recreation Fee Dollars

Recreation fee dollars are an investment in outdoor recreation. Current and future generations benefit as 100% of the funds collected are reinvested in the facilities and services that visitors enjoy, use, and value.

They support and enhance:

- Maintenance, repair, and facility enhancement related directly to visitor enjoyment, visitor access, and health and safety
- Interpretation, visitor information, visitor service, visitor needs assessments, and signs
- Habitat restoration directly related to wildlife- dependent recreation that is limited to hunting, fishing, wildlife observation, or photography
- Law enforcement related to public use and recreation
- Direct operating or capital costs associated with the recreation fee program



Other Accomplishments

There are no other accomplishments to report due to the Outdoor Recreation Planner position being vacant.

Vicinity Map



Contacts

Kemmerer Field Office

Recreation Fee Program Contact

Phone Number: 307-828-4500

Email: Kemmerer_WYMail@blm.gov

Web: BLM.gov/office/kemmerer-field-office

District Contact

Phone Number: 307-525-0256

Email: Rock_Springs_WYMail@blm.gov

Revenue & Expenditures

FY21 Revenue

Recreation Use Permits (RUPs)	\$4,724.50
Special Recreation Permits (SRPs)	\$3,603.80
Individual Special Recreation Permits	\$0.00
Interagency Passes	\$720.00
Total Recreation Fee Revenue for FY21	\$9,048.30

FY21 Expenditures

Repair & Maintenance	\$0.00
Visitor Services	\$0.00
Law Enforcement	\$0.00
Habitat Restoration	\$0.00
Collections/Overhead	\$0.00
Total Recreation Fee Expenditures for FY21	\$0.00



Planned Activities



Fontenelle Creek Campground

- Funds will be spent on the administration and monitoring of Special Recreation Permit Holders and general land users. This will be accomplished through recreation site visits, law enforcement services, patrols and visitor contacts during peak use periods, and the monitoring of recreation resources.
- Funds will also be spent for the continued maintenance of Cross Country Ski Trails near the town of Kemmerer.
- Funds may be spent in 2022 or future years on maintenance and improvements to recreation facilities.

FY22 Planned Expenditures

Repair & Maintenance	\$0.00
Visitor Services	\$4500.00
Law Enforcement	\$2000.00
Habitat Restoration	\$0.00
Collections/Overhead	\$2500.00
Total Recreation Fee Expenditures for FY22	\$9000.00
FY21 End of Year Carryover	\$16983.30
FY22 Projected Revenue	\$9000.00

Connecting with Communities

The Kemmerer Field Office Recreation Program is committed to making various recreation opportunities accessible to the local communities and area visitors. This has been and is done by facilitating recreation opportunities both close to population centers and in remote environments, by having Fee Site Campgrounds as well as Free Site Campgrounds, with basic amenities present at both, and by accommodating a wide variety of dispersed uses from world-class big game hunting and snowmobiling today use hiking and sightseeing. This office seeks to benefit its wide range of users equally in its current and future recreation planning efforts.

