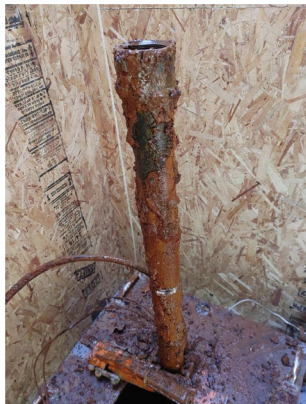




# OREGON/WASHINGTON Cascade-Siskiyou National Monument

## Recreation Fee Program Spending & Accomplishment Highlights 2021

### Hyatt Lake Well



*Corroded Well Piping*

In June 2021, the Hyatt Lake Recreation Area well pumped less than 6 gallons per minute. This amount of water would not meet demand, so the BLM contracted with a local water pump company to conduct a well head test. The test indicated that the pump was working adequately, but there was an issue with the well casing. Pulling the well casing showed significant corrosion and numerous holes, making it unusable. With the new casing, the well now produces 17 gallons per minute.

### Hyatt Lake Dump Bed Trailer



*New Dump Bed Trailer*

Several recent projects at the Hyatt Lake Recreation Area have required the loading and removing of large amounts of material. To facilitate this work, a dump bed trailer was purchased. The dump bed trailer has proven to be an invaluable tool that reduces the work required for unloading material and improves employee safety. So far, it has been used to replace gravel at campsites and to remove cut rounds of fallen hazard trees that will be split for camp firewood.

## Recreation Fee Dollars

*Recreation fee dollars are an investment in outdoor recreation. Current and future generations benefit as 100% of the funds collected are reinvested in the facilities and services that visitors enjoy, use, and value.*

They support and enhance:

- Maintenance, repair, and facility enhancement related directly to visitor enjoyment, visitor access, and health and safety
- Interpretation, visitor information, visitor service, visitor needs assessments, and signs
- Habitat restoration directly related to wildlife- dependent recreation that is limited to hunting, fishing, wildlife observation, or photography
- Law enforcement related to public use and recreation Direct operating or capital costs associated with the recreation fee program



### Other Accomplishments

- Continued replacing fluorescent light bulbs with LED bulbs.
- Replaced deadbolt locks on all buildings.
- Repaired equipment that is used for Nordic ski trail grooming.
- Replaced one damaged restroom door.
- Replaced hydraulic motor on CAT track loader that is used for winter plowing.
- Purchased and installed new batteries in campground host golf carts.
- Monitored the Pacific Crest Endurance Ride Special Recreation Permit.

### Vicinity Map



### Contacts

#### Cascade-Siskiyou National Monument

##### Recreation Fee Program Contact

Phone Number: (541) 618-2200

Email: [BLM\\_OR\\_MD\\_Mail@blm.gov](mailto:BLM_OR_MD_Mail@blm.gov)

Web: <https://www.blm.gov/office/medford-district-office>

##### District Contact

Phone Number: (541) 618-2252

Email: [blong@blm.gov](mailto:blong@blm.gov)

### Revenue & Expenditures

#### FY21 Revenue

Recreation Use Permits (RUPs)	\$43,787.55
Special Recreation Permits (SRPs)	\$115.00
Individual Special Recreation Permits	\$0.00
Interagency Passes	\$10,460.00
<b>Total Recreation Fee Revenue for FY21</b>	<b>\$54,362.55</b>

#### FY21 Expenditures

Repair & Maintenance	\$45,165.90
Visitor Services	\$0.00
Law Enforcement	\$0.00
Habitat Restoration	\$26,995.42
Collections/Overhead	\$22,665.04
<b>Total Recreation Fee Expenditures for FY21</b>	<b>\$94,826.36</b>



### Planned Activities



Example Bulletin Board

- Continue replacing gravel in campsites in locations that have eroded.
- Purchase a new UTV for winter Nordic trail grooming.
- Remove a large amount of material from hazard trees.
- Construct and install trailhead bulletin board at Hyatt Lake for winter trail information.
- In Fiscal Year 2023, the BLM will initiate a significant campground renovation project at Hyatt Lake that includes new water and wastewaters systems.

### FY22 Planned Expenditures

Repair & Maintenance	\$8,000.00
Visitor Services	\$0.00
Law Enforcement	\$0.00
Habitat Restoration	\$20,000.00
Collections/Overhead	\$4,000.00
Total Recreation Fee Expenditures for FY22	\$32,000.00
FY21 End of Year Carryover	\$127,000.00
FY22 Projected Revenue	\$50,000.00

### Connecting with Communities

The Cascade Siskiyou National Monument (CSNM) maintains several partnerships that benefit the local communities and visitors; these include:

- Friends of the Cascade Siskiyou National Monument offers interpretive programming, guided hikes, and talks that support the CSNM.
- Pacific Crest Trail Association (PCTA) helps maintain 41 miles of the Pacific Crest Trail (PCT) in the CSNM.
- Southern Oregon Nordic Club (SONC) - groom and maintain over 32 miles of nordic trails and offer ski trips, outings, and workshops to skiers of all ages and abilities.
- Klamath Basin Snowdrifters - who maintain and groom a 40-mile connected network of winter trails from Lake of the Woods to Hyatt Lake.
- Siskiyou Mountain Club (SMC) partners with the BLM to maintain the PCT and trails in the Soda Mountain Wilderness.

These organizations help maintain recreational opportunities and provide access to BLM lands. They also help educate visitors on good land stewardship and sharing public lands between different users. All of these organizations work to help the BLM to support community service providers while balancing the interests of all public land users.

