



NEVADA

Ely District Office

Recreation Fee Program Spending & Accomplishment Highlights 2021

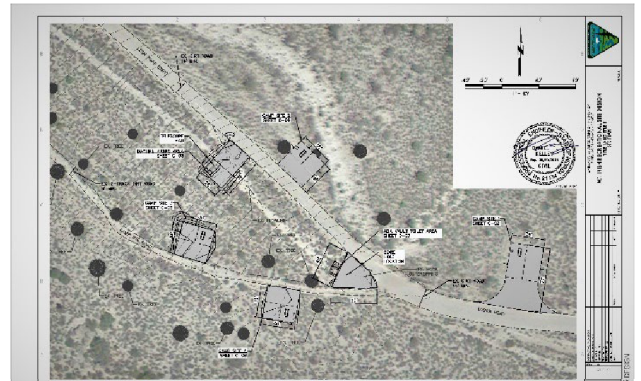
Trilobite Site



Trilobite Toilet Installation

The Oak Springs Trilobite Site is east of Caliente, NV. This fascinating area is laden with fossil remains of six types of trilobites in the shale deposits near Oak Springs Summit. Improvements to recreation facilities enhanced the visitor experience. They lengthened the stay for the local schools by adding the new toilet (\$107,068 FY21). The double vault toilet is now available onsite for all recreating visitors.

Mt Irish Engineering Study



Mt. Irish Plans for campsites and vault toilet

In FY21, BLM contracted an engineering study at the Mt. Irish Rec Site in the Basin and Range NM to obtain a geotechnical report for a new vault toilet, design plans, construction cost estimate, and construction scope of work. The contract was funded with \$37,268.15 of 1232 money. The contractor completed these tasks in December 2021. The BLM plans to construct four campsites and install a vault toilet to minimize impacts on cultural resources and enhance the visitor experience.

Recreation Fee Dollars

Recreation fee dollars are an investment in outdoor recreation. Current and future generations benefit as 100% of the funds collected are reinvested in the facilities and services that visitors enjoy, use, and value.

They support and enhance:

- Maintenance, repair, and facility enhancements related directly to visitor enjoyment, visitor access, and health and safety
- Interpretation, visitor information, visitor service, visitor needs assessments, and signs
- Habitat restoration directly related to wildlife-dependent recreation such as hunting, fishing, wildlife observation, or photography
- Law enforcement related to public use and recreation.
- Direct operating or capital costs associated with the recreation fee program.

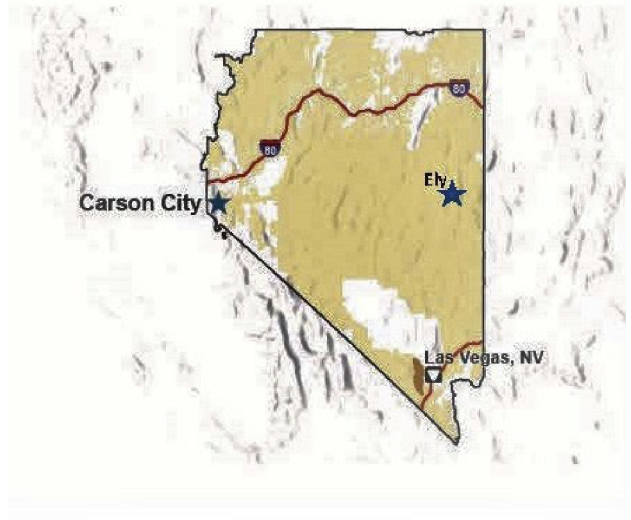


Other Accomplishments

- Maintenance of 13 recreation sites, Mt. Wilson Back Country Byway, and 5 Recreation Management Areas.
- Two contracts for capital improvements for health & safety (1 construction and 1 Architecture and Engineering).
- Facilities improvements.
- Production of interpretive materials.
- Winter trail grooming.
- Trash removal at popular recreation trailheads.
- Processing Special Recreation Permits and monitoring resources.

Note: This is a representative list of projects, not a comprehensive list. Other projects were completed using fee collection funds.

Vicinity Map



Contacts

Ely District Office

Recreation Fee Program Contact

Phone Number: (775) 289-1800

Email: blm_nv_eydowebmail@blm.gov

Web: <https://www.blm.gov/office/ely-district-office>

District Contact

Phone Number: (775) 289-1800

Email: blm_nv_eydowebmail@blm.gov

Revenue & Expenditures

FY21 Revenue

Recreation Use Permits (RUPs)	\$0.00
Special Recreation Permits (SRPs)	\$80,427.00
Individual Special Recreation Permits	\$0.00
Interagency Passes	\$0.00
Total Recreation Fee Revenue for FY21	\$80,427.00

FY21 Expenditures

Repair & Maintenance	\$188,430.78
Visitor Services	\$13,272.00
Law Enforcement	\$0.00
Habitat Restoration	\$0.00
Collections/Overhead	\$22,739.82
Total Recreation Fee Expenditures for FY21	\$224,442.60



Planned Activities



Snowmobiles

Funds will be used to maintain 13 recreation sites, maintain Back Country Byways, fund operation and labor costs for staff supporting recreation resources (fleet, supplies, trail grooming, equipment, and materials), dumpster contracts for popular recreation trailheads, processing and monitoring Special Recreation Permits, and overhead, administrative, and indirect costs (not to exceed 15%).

FY22 Planned Expenditures

Repair & Maintenance	\$40,000.00
Visitor Services	\$20,000.00
Law Enforcement	\$0.00
Habitat Restoration	\$0.00
Collections/Overhead	\$25,000.00
Total Recreation Fee Expenditures for FY22	\$85,000.00
FY21 End of Year Carryover	\$167,904.00
FY22 Projected Revenue	\$80,000.00

Connecting with Communities

The Ely District collaborates with volunteers, community groups, non-profit organizations, and local and other governing bodies to manage recreation uses on the 11.9 million acres of public lands. With the help of these and other partners, we performed activities such as maintaining multiple-use trail systems, creating the Ward Disc Golf Course, monitoring and maintaining wilderness areas, detecting and reporting vandalism and misuse of public lands and installing carsonite signs for mileage and directions for public safety. In addition, 93 BLM staff and volunteers conducted a 3-day/night "BioBlitz" in Basin and Range National Monument to identify the plants, small mammals, reptiles, birds, and amphibians to inform future planning of the monument. Management of recreation resources in the Ely District focuses on access to all people from every walk of life. Recreation sites comply with the Americans with Disabilities Act. Public outreach and visits to schools in low-income communities demonstrate our commitment to equal access and a welcoming and inclusive attitude toward all.

