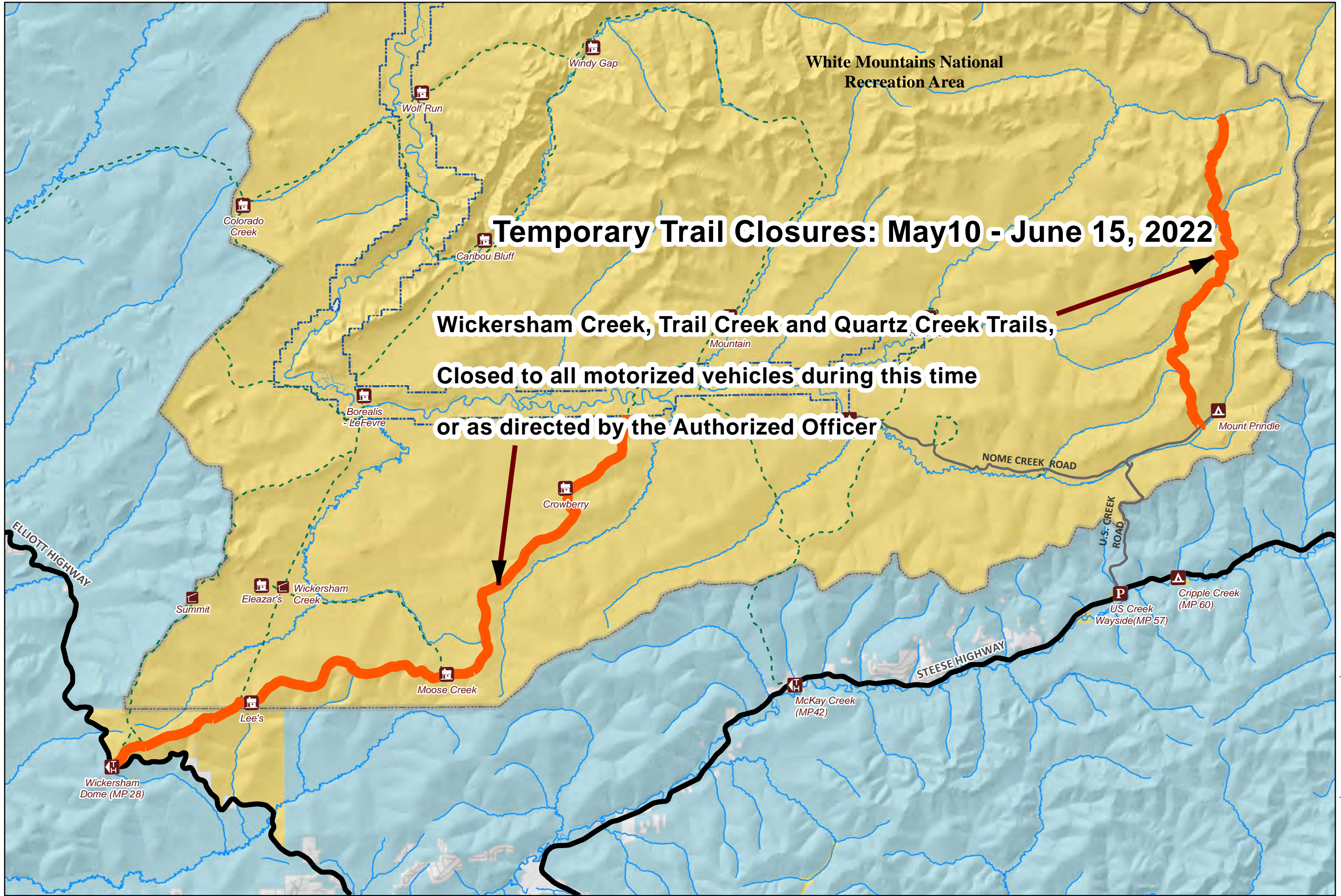




Temporary Trail Closure Map - May 10- June 15, 2022

U.S. DEPARTMENT OF THE INTERIOR | BUREAU OF LAND MANAGEMENT | ALASKA | WHITE MOUNTAINS NATIONAL RECREATION AREA

- OHV Trail Closures
- Bureau of Land Management
- State
- Private
- Water



Temporary Trail Closures: May 10 - June 15, 2022

**Wickersham Creek, Trail Creek and Quartz Creek Trails,
Closed to all motorized vehicles during this time
or as directed by the Authorized Officer**

Disclaimer: No warranty is made by the Bureau of Land Management as to the accuracy, reliability, or completeness of these data for individual or aggregate use with other data. Original data were compiled from various sources. This information may not meet National Map Accuracy Standards. This product was developed through digital means and may be updated without notification. The information displayed on this map should be used for graphic display only. For official land status information, refer to Cadastral Survey plats, Master Title Plats, and land status case-files.

