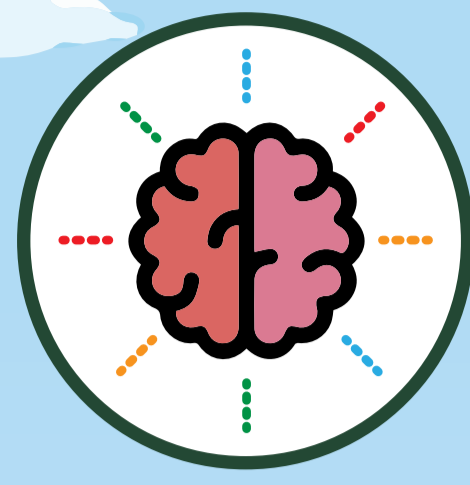
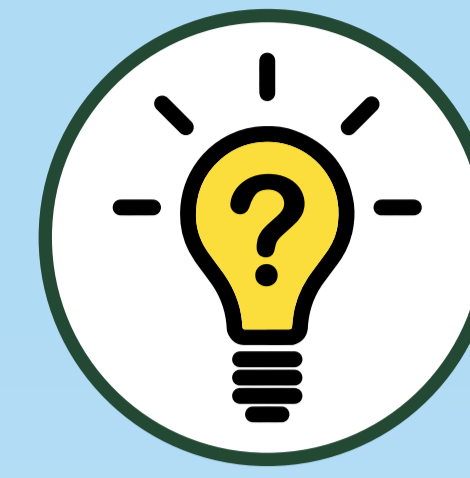


# What it takes to be a successful ENVIRONMENTAL EDUCATOR



**CREATIVITY**  
You keep programs fun and engaging. You come up with ways to explain ideas that appeal to all sorts of different learning styles.



**CURIOSITY**  
You have an desire to learn! You are a keen observer of nature and are constantly looking at things in new and different ways.



**COMMUNICATION**  
You can talk with audiences of all different ages, backgrounds, interests and perspectives and make science fun and exciting.



**INCLUSIVITY**  
You create learning environments in which everyone feels welcome, valued, safe and empowered.



**TEAMWORK**  
You are ready to help your team to be successful no matter the task.



**PLAYFULNESS**  
You are always willing to try new things, be silly, and look at the world from unexpected angles.



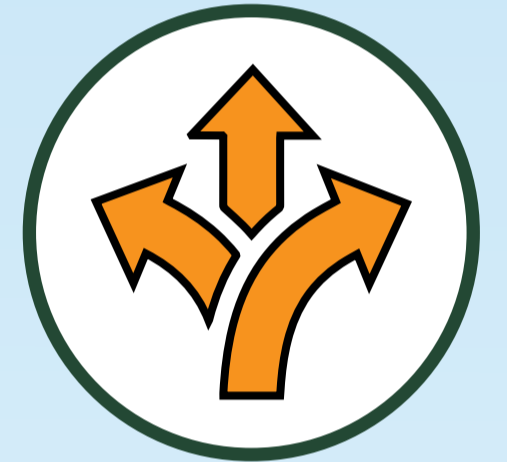
**PATIENCE**  
No matter how long it takes kids to put on snowshoes or someone to understand the concepts you are trying to convey, you never lose your cool.



**PASSION**  
You love to connect people to nature, deepen their understanding of science and natural resources, and help them become better stewards of the public lands.



**KNOWLEDGE**  
You are a skilled outdoors person and you know how to research to learn even more. And you inspire others to want to learn, too.



**FLEXIBILITY**  
You are adaptable! You are prepared to change things up to keep programs safe, engaging, and in tune with the environment around you.



Being a BLM environmental educator can also take education, of course. Find out what it takes to be one at <https://www.blm.gov/careers/careers-in-blm>.

## BLM ALASKA ENVIRONMENTAL EDUCATION

Our educators work with community and recreation partners to provide opportunities for people to spend time outdoors. By engaging young people in learning and recreation on public lands, we can nurture the next generation of conservation stewards and leaders.

### FY2021 Statewide Engagement

**131**  
outreach programs

**98**  
education programs

**42**  
Every Kid Outdoors programs

**45**  
statewide partnerships

**50**  
Alaska communities served

**5,305**  
total learners engaged



Learn more about our Environmental Education Program at <https://www.blm.gov/learn>