



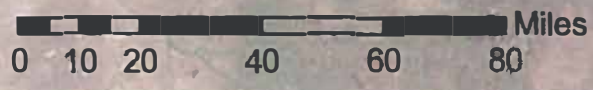
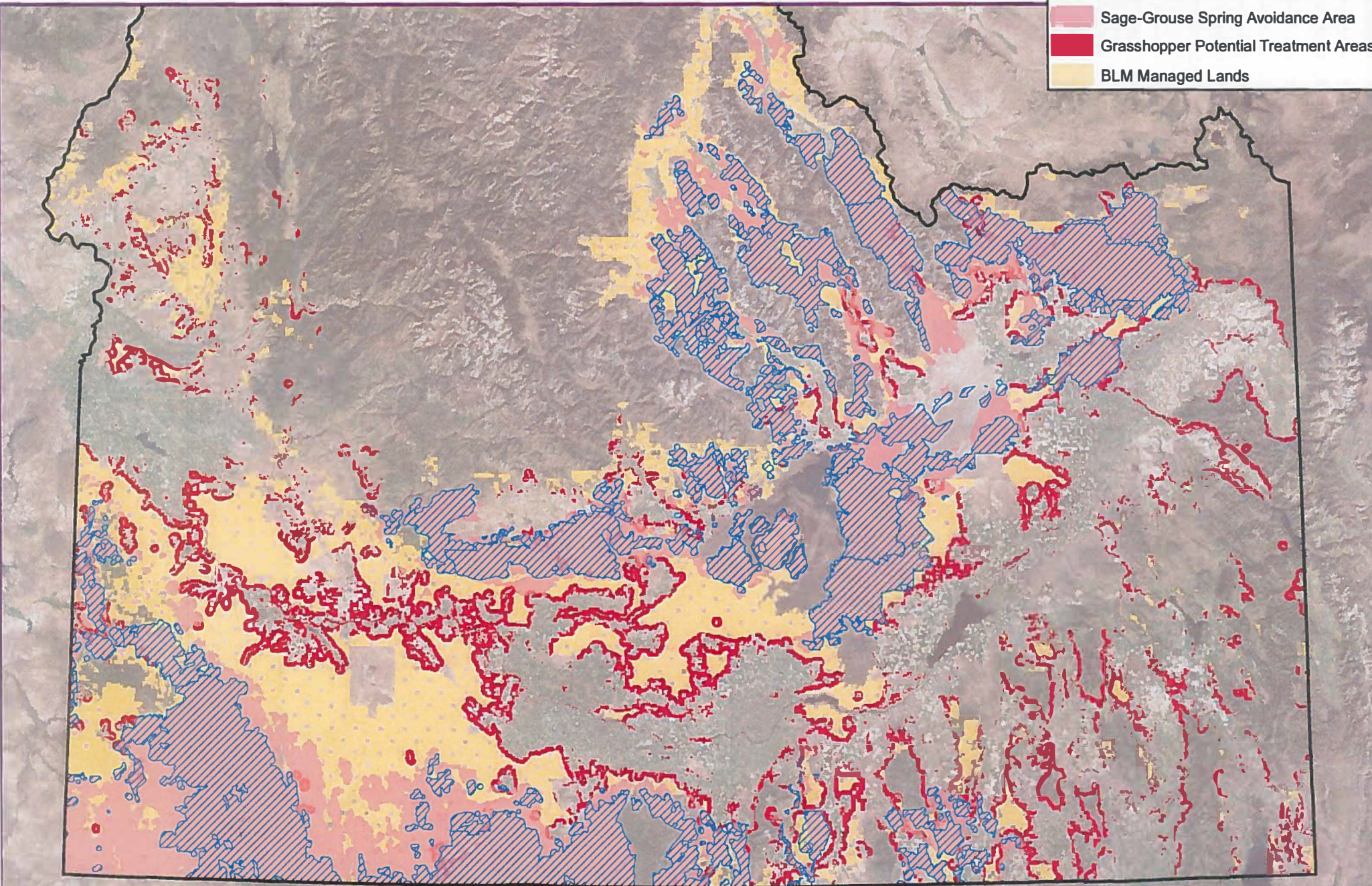


# Map 2: Potential APHIS Grasshopper Pesticide Treatment Areas With Greater Sage-grouse Seasonal Habitat Avoidance Areas

**Legend**

-  Sage-Grouse Summer Avoidance Area
-  Sage-Grouse Spring Avoidance Area
-  Grasshopper Potential Treatment Areas
-  BLM Managed Lands



"No warranty is made by the Bureau of Land Management. The accuracy, reliability, or completeness of these data for individual use or aggregate use with other data is not guaranteed."

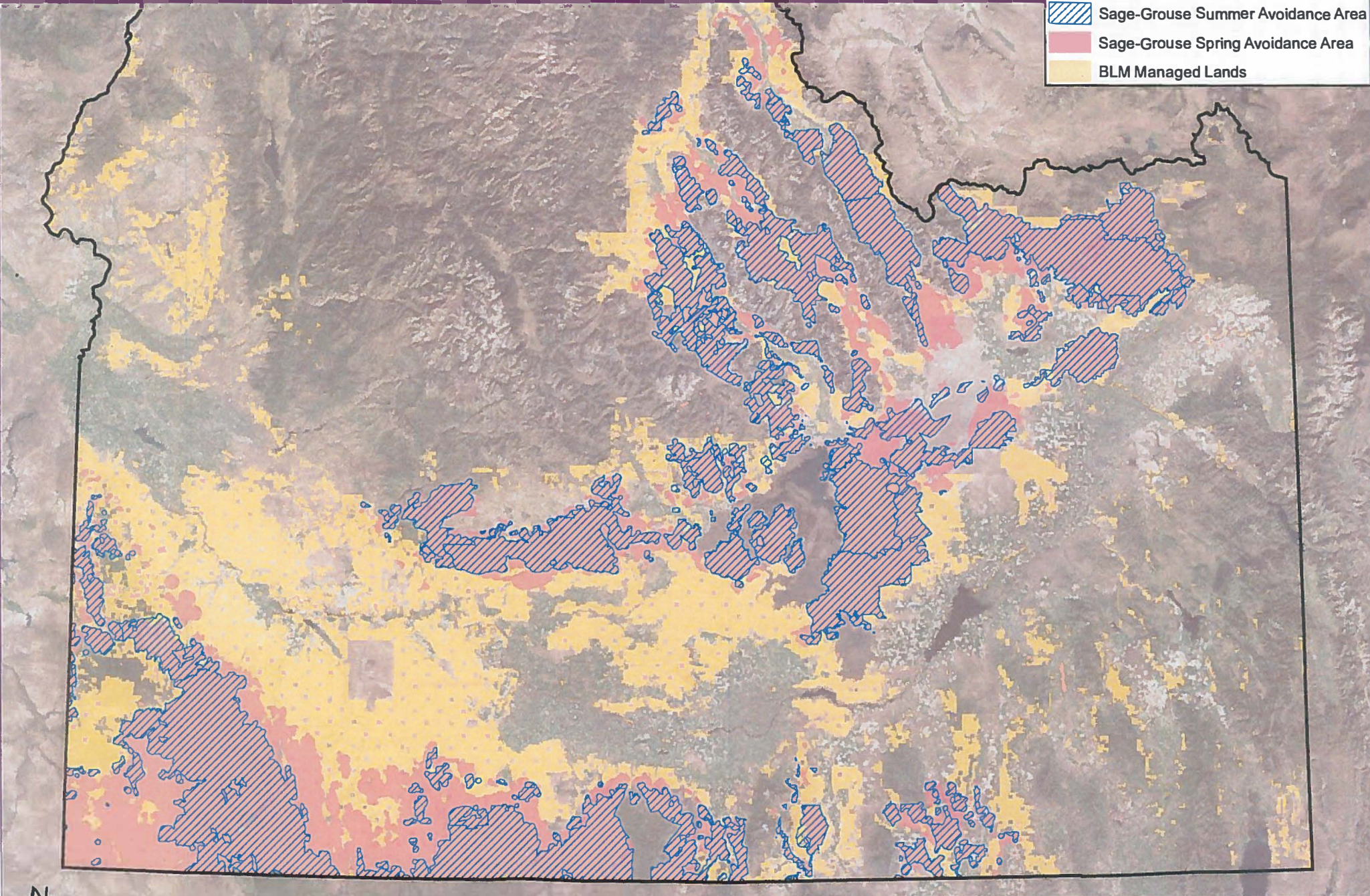




# Map 1: Greater Sage-grouse Seasonal Avoidance Areas For APHIS Mormon Cricket Pesticide Treatments

**Legend**

-  Sage-Grouse Summer Avoidance Area
-  Sage-Grouse Spring Avoidance Area
-  BLM Managed Lands



"No warranty is made by the Bureau of Land Management. The accuracy, reliability, or completeness of these data for individual use or aggregate use with other data is not guaranteed."

