



Campbell Creek Science Center

Who Lives on a Tree?

Trees are homes to many different living things. What creatures might you see in or on a tree when you take a careful look? Practice your observation skills to find out.

Directions

1. Find a tree you can spend time observing. Carefully study the tree. What signs do you observe for what might live on or in the tree?
2. Look at different parts of the tree for evidence—up high in the branches, down by the ground, and at eye level. Listen closely for evidence of living things in and on your tree.

Do you hear or see birds in the tree?
Are there any nests in the branches?

Can you spot any squirrels? What
other animals do you see?

Do you see any mushrooms
growing out of your tree?

Is there any moss or lichen growing
on the tree? What does it feel like?

Are there insects or spiders crawling
on the trunk? Are there any holes
made by these animals?

What is on or near the base of the tree?

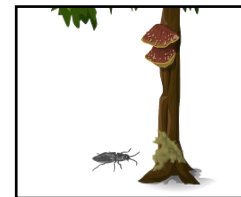
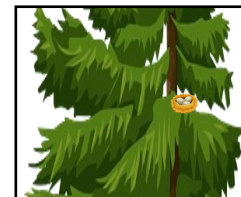


Materials

- Pencil
- Paper
- Hand lens, crayons, colored pencils, camera (optional)

Questions

- What sorts of creatures live on or in trees?
- Do different creatures live in different part of trees?



My Tree
Triptych

3. Record your findings using a *trptych*—a three-part drawing. Use one part for your observations from high in the tree, one for observations from eye level, and one for observations from the area near the base of the tree. Here is an example:

