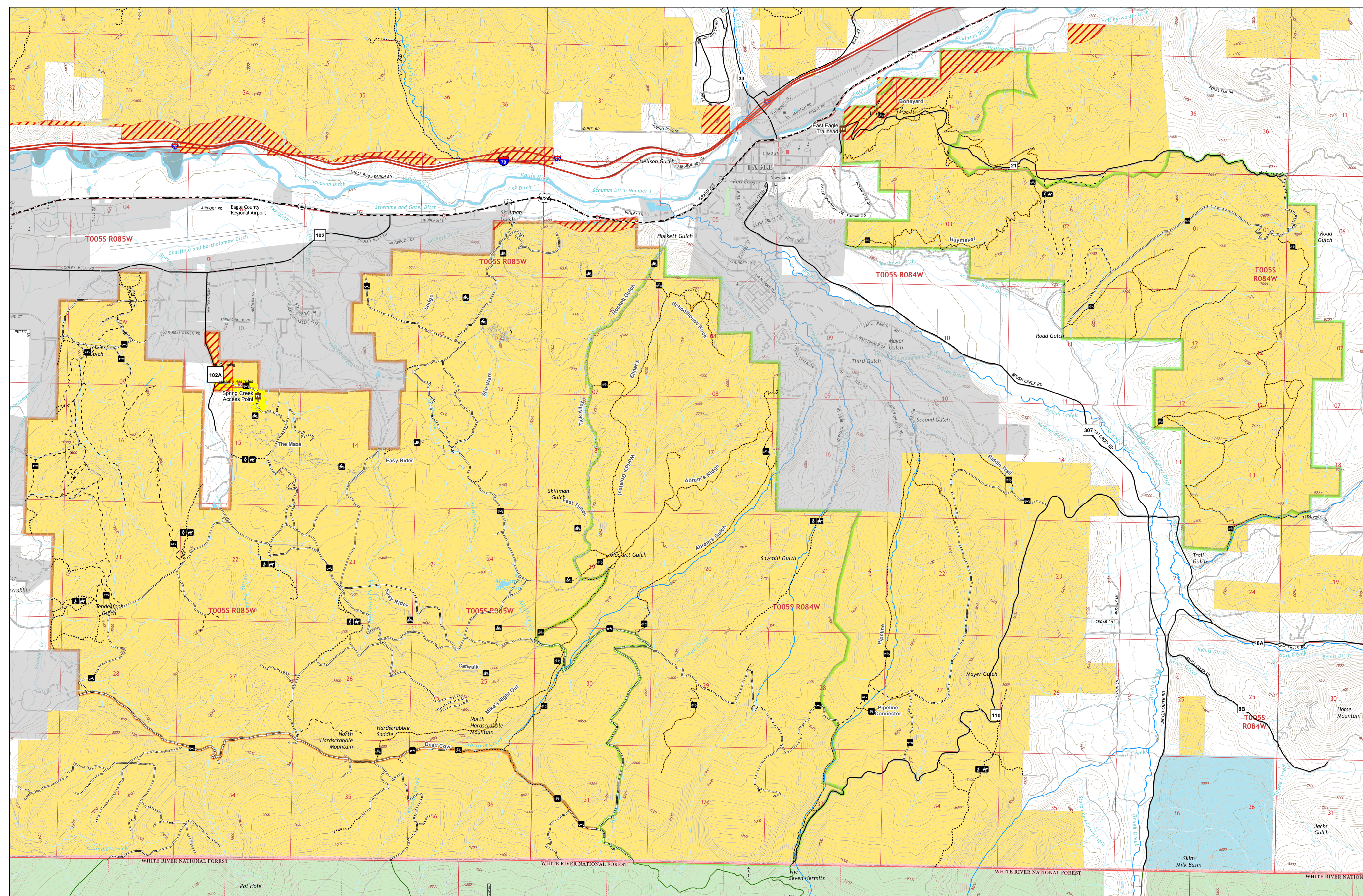




Hardscrabble SRMA- Colorado River Valley Field Office



- Trail Head
- BLM Routes
- Open to ATV (<50 in), Motorcycles, Bikes, Hikers, & Equestrians
- Open to Bikes, Hikers, Equestrians
- Open to Hikers, Equestrian, and Livestock
- Open to Motorcycles, Bikes, Hikers, & Equestrians
- Open to all Modes of Transportation
- Major Roads
- County
- Interstate
- US Highway
- Municipal Street
- USFS
- Unknown route
- No Camping
- No Firearm Use
- Land Ownership
- Bureau of Land Management
- Private
- State
- State Wildlife Area
- US Forest Service

No warranty is made by the Bureau of Land Management as to the accuracy, reliability, or completeness of these data for individual use or aggregate use with other data, or for the purposes not intended by the BLM. Spatial information may not meet National Map Accuracy Standards. This information may be updated without notification.