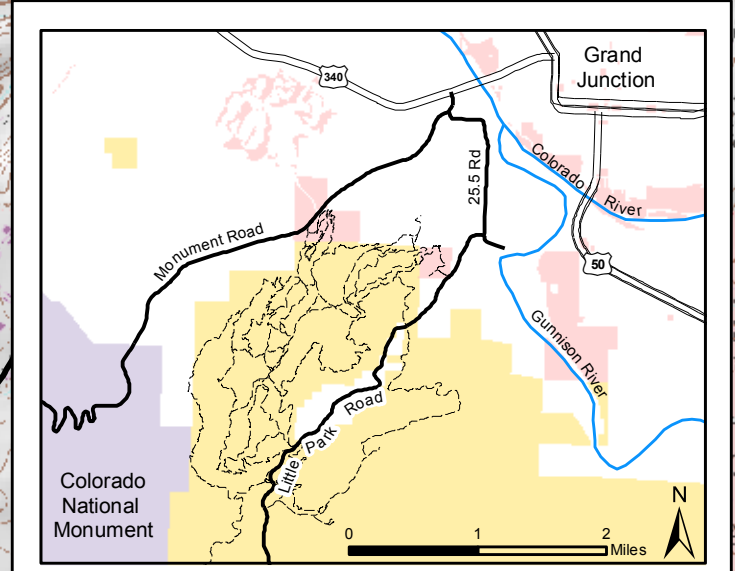


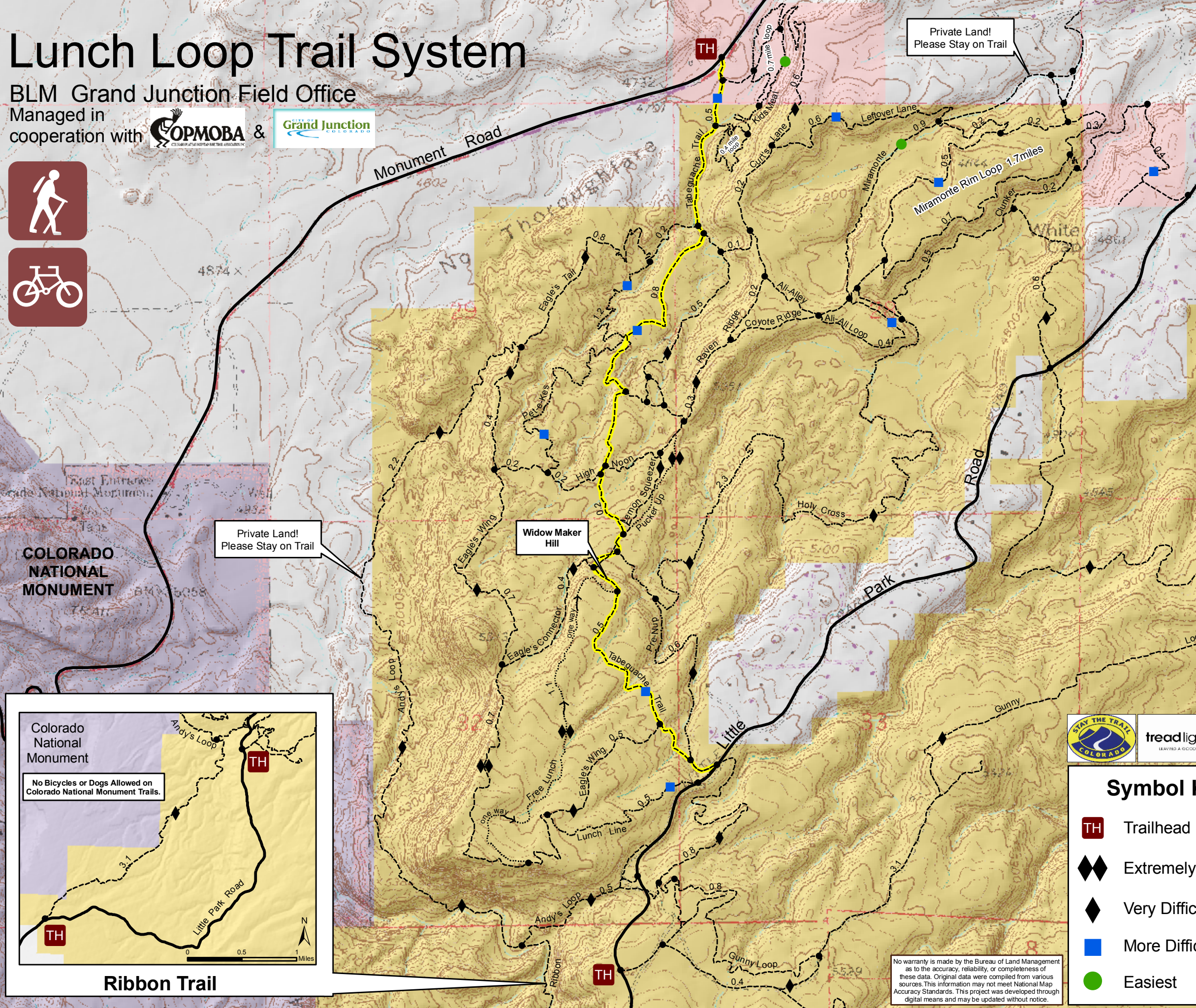
Lunch Loop Trail System

BLM Grand Junction Field Office

Managed in cooperation with  & 



Location of Lunch Loop Trail System



- ### Lunch Loop Rules
- Travel is limited to designated routes and designated types of use. See legend.
 - Do not create new trails or modify existing trails. All trail maintenance and construction must be authorized by the BLM.
 - **Caution:** Free Lunch & Pucker Up are designated for downhill mountain biking. No hiking allowed.
 - Bicycles and dogs are prohibited on trails within Colorado National Monument and private lands bordering this area to the west.
 - Public lands shown on map are closed between 11:00 p.m. and 5:00 a.m.

Legend


- Bureau of Land Management
- CO National Monument
- Private Land
- City of Grand Junction
- Mountain Biking
- Hiking
- Hiking & Bicycling
- Hiking & Horseback Riding
- Tabeguache Trail

Symbol Key

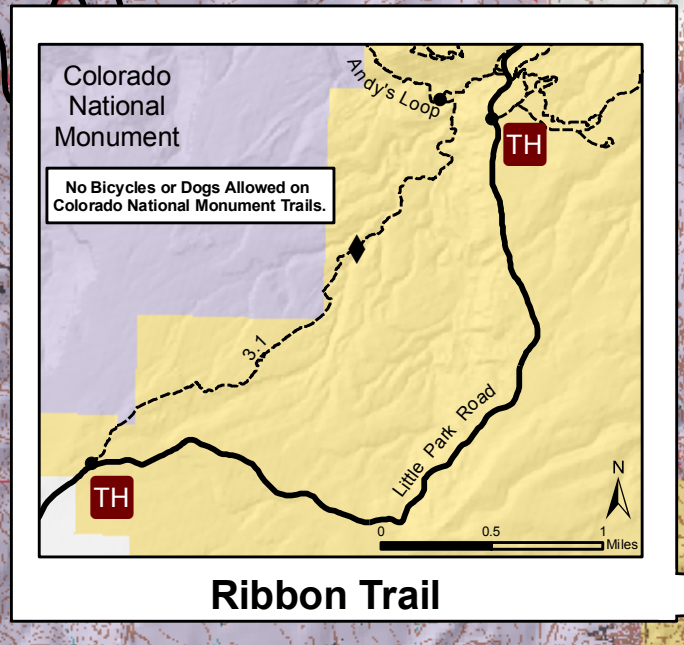
- Trailhead
- Extremely Difficult
- Very Difficult
- More Difficult
- Easiest

0 0.25 0.5 Miles

For more information contact:
 Bureau of Land Management
 Grand Junction Field Office
 Grand Junction, CO 81506
 (970) 244-3000
www.blm.gov/co



7-08-2009



No warranty is made by the Bureau of Land Management as to the accuracy, reliability, or completeness of these data. Original data were compiled from various sources. This information may not meet National Map Accuracy Standards. This project was developed through digital means and may be updated without notice.