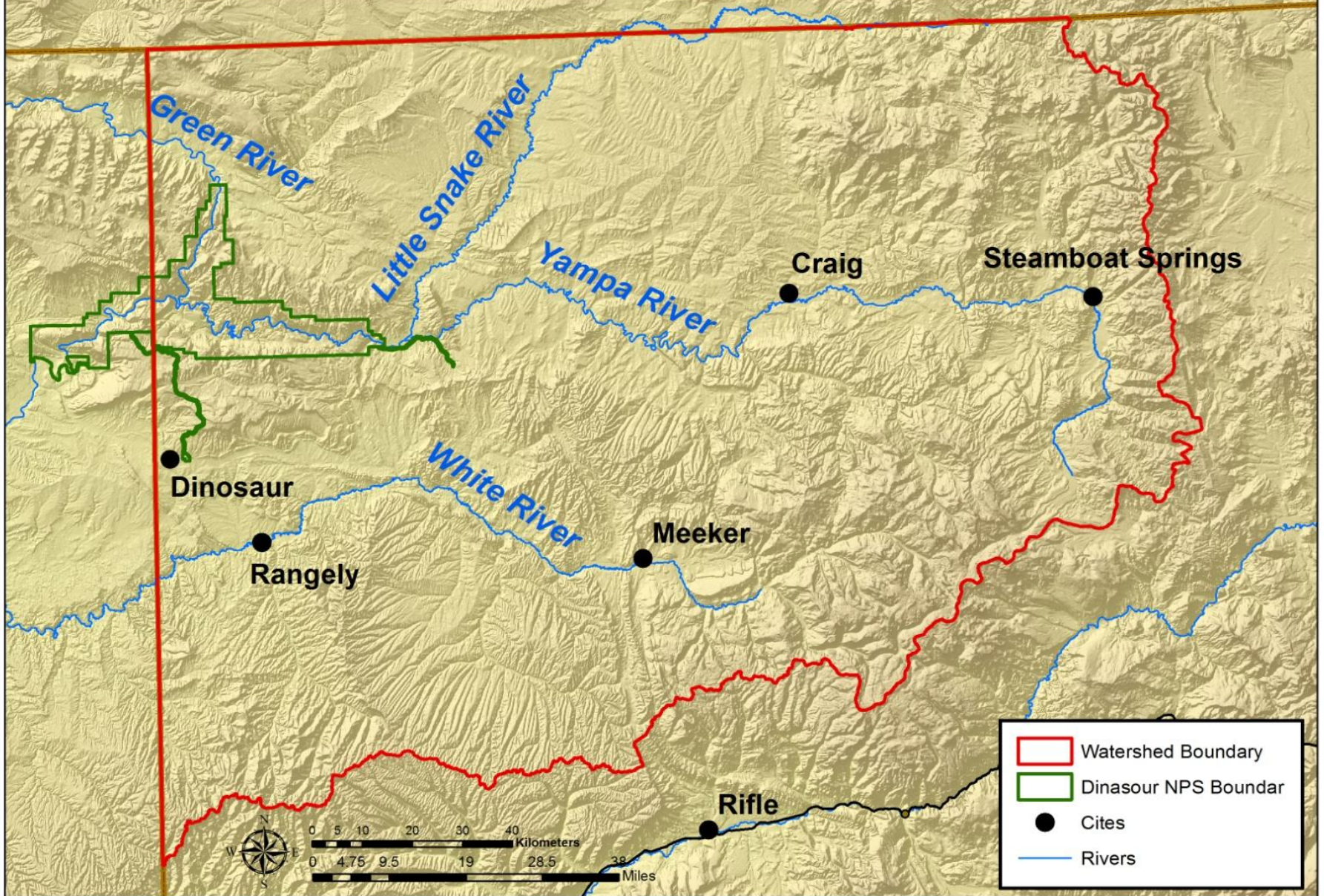


Northwest Colorado Watershed Partnership



Northwest Colorado Watershed Boundary



Background



- **2010**

- TNC and TC facilitated the formation of the partnership with initial funding from the Packard Foundation.
- Conducted three meetings with partners to draft the Northwest Colorado Watershed Partnership Action Plan



- **2011**

- Organized potential demonstration project site tour
- Finalized the Northwest Colorado Watershed Partnership Action Plan
- Identified and started working on Demonstration Project Sites

Partners



- Bureau of Land Management Field Offices: Little Snake FO and White River FO
- Colorado Division of Wildlife
- Colorado Environmental Coalition
- Colorado First Conservation District
- Colorado Northwestern Community College
- Colorado Water Conservation Board
- County Weed Managers: Moffat, Rio-Blanco, and Routt
- Douglas Creek Conservation District
- Friends of the Yampa
- Lower White River Weed and Pest District
- National Park Service - Dinosaur National Monument
- Natural Resource Conservation Service
- Packard Foundation
- Palisade Insectary (US Department of Agriculture)
- Rocky Mountain Bird Observatory
- Tamarisk Coalition
- The Nature Conservancy
- Upper Colorado Environmental Plant Center
- U.S. Fish and Wildlife Service
 - USFWS Browns Park National Wildlife Refuge
 - Partners for Fish and Wildlife
- White River Conservation District
- Yampa River State Park
- Yampa Valley Partners

Northwest Colorado Watershed Partnership Action Plan



- Compile Mapping and Inventory
- Define Vision and Guiding Principles
- Identify System Stressors and Assumptions
- Establish 5 Year Goals
- Define Criteria for Prioritization
- Identify Demonstration Projects



Vision

Northwest Colorado watersheds that are dominated by native vegetation, where the threats from non-native woody plants and other associated invasive species have been mitigated and the riparian areas of the watershed continue to become more naturally functioning, self sustaining, diverse, and resilient over time, and where local communities are engaged in the ecological, social, and economic dialogue and problem solving required for maintaining and/or improving the sustainability of shared resources that are subject to multiple use objectives.

Guiding Principles

- A collaborative approach.
- Funding must sustain short-term monitoring and maintenance to a point of success.
- Minimize harm to wildlife species.
- Concurrent restoration work throughout the watershed.
- Educate the public and watershed stakeholders at every opportunity.

Five Year Goals



- Ecologic – create a sustainable, healthy riparian plant communities
 - Tamarisk reduced to < 5 percent
 - 100 % control Russian Olive
 - Secondary weeds to <15%
- Social
 - Develop a professional, competitive, and efficient work force
 - Employ youth
 - Increase private landowner involvement and stewardship
- Economic
 - Create a sustainable restoration economy
- Management
 - Manage adaptively
 - Create a sustainable funding structure

Demonstration Projects Selection Criteria



- Achievable
- Visible
- Shared and promoted
- Highly likely to be successful
- Showcase programs (such as NRCS' EQIP)
- Use community volunteers especially on public land
- Landowner is a champion for restoration
- Investment over time
- Representative of issues on the system

Selected Demonstration Projects



Agency	Little Snake	White	Green	Yampa
BLM	Little Snake east of DNM (LSFO)	Big Trujillo, Olive Garden and Beefsteak sites (WRFO)	N/A	Milk Creek; Temple Gulch (LSFO)
Browns Park National Wildlife Refuge	N/A	N/A	Cottonwood plantation	N/A
Private Land/NRCS	Yes	Yes	Yes	Yes
NPS	Completed all invasive control work – continual maintenance			

Big Trujillo Restoration Project

White River Field Office



Olive Garden Restoration Project

White River Field Office



Demonstration Tracking Process



- Key project points
 - Type of landowner responsibility (cost share, contribution)
 - Maintenance plans (who is responsible)
 - Contract type
- Treatment Details
 - Methods of control
 - Previous density
 - Monitoring
 - Follow-up control
 - Resulting densities
 - Reaction to the understory; revegetation needs
 - Before vs. after (photo points)

Next Steps



- Solicit remaining MOU signatories
- Create a Tracking Workbook for potential projects
- Create Implementation Plans for Identified Demonstration Projects
- Convene a watershed-wide prioritization meeting in January 2012
- Work with White River and Douglass Creek Conservation Districts on a Watershed Tour for 2012
- Seek additional Funding