

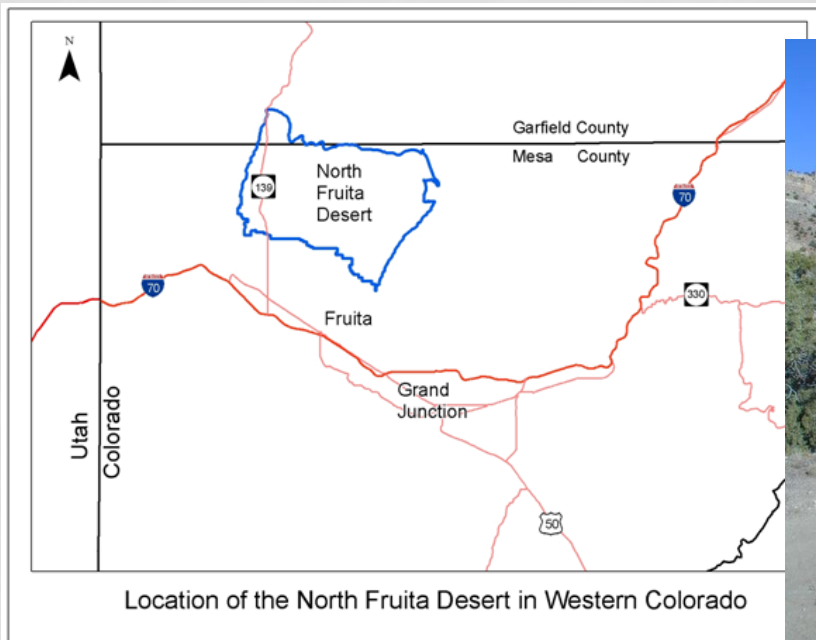
A photograph of a desert landscape. In the background, a large, eroded rock formation with a prominent flat top and steep, gullied slopes rises against a blue sky with scattered clouds. The foreground is filled with dense, dry, yellowish-brown desert vegetation, including various shrubs and grasses. The lighting suggests late afternoon or early morning, with long shadows and warm tones.

NORTH FRUITA DESERT

CAMPGROUND FEE PROPOSAL

AREA DESCRIPTION

- North Fruita Desert SRMA
 - Multi-use recreation
 - World class mountain biking
 - Tourism market



Use Numbers (Trailhead)

- 2011 50,000
- 2010 35,000



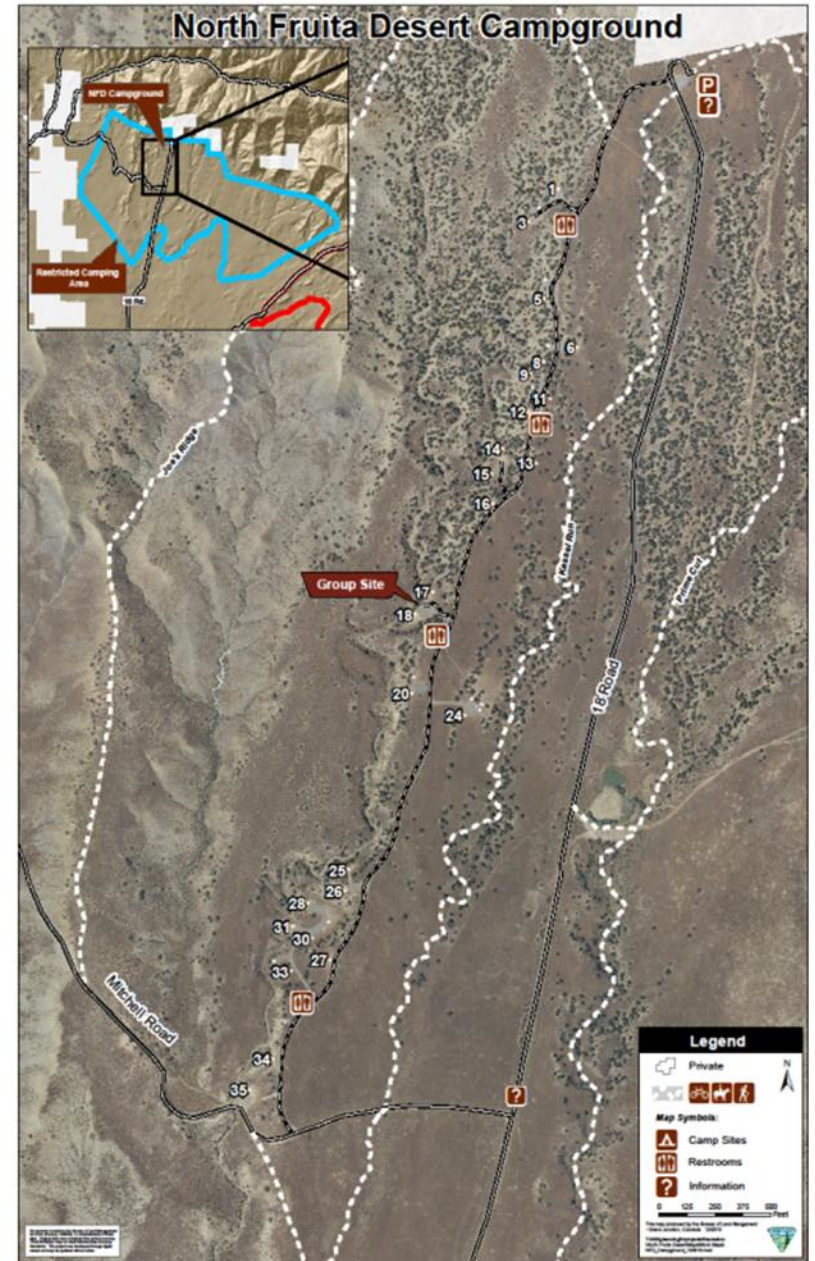
2011 Ranger Weekend Observations (Campground)

- April, May, October and November – FULL
- Overflow averages around 40 camps



PROPOSED FEE SITE

- 37 unit campground on 40 acres of public land
- Installed in 2006



FACILITIES



HISTORY OF PROPOSAL

- Business Plan
 - Finalized 2008
 - Updated 2011
- Public Involvement
 - Initiated 2008
 - Updated 2011
- Recreation RAC
 - Presented April 2009
- Recreation RAC
 - Numbered sites
 - Dispersed camping
 - Trash Services
 - Convenient access to trailheads
 - Capacity issues
 - Tabled

PROPOSAL

\$10 per campsite per day (2 car max per site)
Projected annual revenue \$18,000-\$20,000

Service	Estimated Cost
Operations and Visitor Services	\$4,500
Collections	\$2,460
Safety/Security/Law Enforcement	\$3,810
Annual and Deferred Maintenance	\$10,050
Estimated Annual Total	\$20,820

FAIR MARKET VALUE

- Highline State Park
 - Tent camping \$14 - \$22 night
 - Showers with lake front
- Local Commercial Camping
 - Tent camping \$29
 - RV Sites \$38

BENEFITS



- Unique opportunity to access singletrack trail system directly from campground.
- Increased safety patrols.
- Additional interpretive services and enhanced security.
- Increased facility maintenance and cleaning.
- A beautiful campground setting with opportunities for family togetherness.
- Greater ability to maintain facilities through time to decrease “deferred maintenance” issues in the future.
- Greater ability to increase the capacity of the campground, to reduce crowding and user conflicts.

PRESS RELEASE

Publications

Newspaper

- GJ Sentinel Oct 20, 2011

TV news

- KJCT 8 – Aired October 20, 2011

Forums

- 4X4 Wire April 28, 2008
- Mountain Bike Review - MTBR

Websites and Social Media

- COPMOBA Facebook October 2011
- BLM GJFO Website 2008-2011

PUBLIC INPUT

- Flyers placed at the following:
 - BLM restroom facilities
 - BLM kiosks
 - Browns
 - Grassroots
 - Ruby Canyon
 - Single Tracks
 - Over the Edge
 - Hot Tomato
- Distributed by rangers and on BLM website



BLM Seeks Comments on Fee Proposal



Send comments to:
BLM_CO_GJ_Web_Mail@blm.gov
BLM GJFO
2815 H Road
Grand Junction, CO 81506

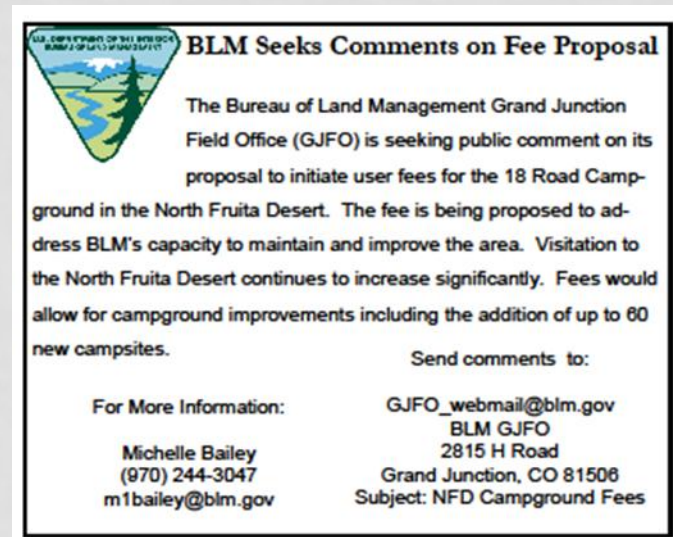
For More Information:
Michelle Bailey
(970) 244-3047
m1bailey@blm.gov

The Bureau of Land Management Grand Junction Field Office (GJFO) is seeking public comment on its proposal to initiate user fees for the 18 Road Campground in the North Fruita Desert.

The fee is being proposed to address BLM's capacity to maintain and improve the area. Visitation to the North Fruita Desert continues to increase significantly. Fees would allow for campground improvements including the addition of up to 60 new campsites.

COMMENT CARDS

- Comment Box with Flyer at the following business locations
 - Browns
 - Grassroots
 - Ruby Canyon
 - Single Tracks
 - Over the Edge
 - Hot Tomato
- Distributed by rangers and on BLM website



VISITOR FEEDBACK

- 15 total comments
 - 10 in favor
 - 3 not in favor
 - 2 unclear



Good luck with this! I think this will be one of the times I'm glad I don't have your job :)

I think my only real thought on this is; I think it would be great if there was a 2nd option for camping in the valley. I guess mountain bike specific camping i.e. close to trails where mountain bikers are the predominate people there. I guess that doesn't really have anything to do with the fee proposal but it might be nice if instead of the fee going towards expanding 18 road camping (where the trails and area get even more over run in peak times) that it went to building a similar location to the east or west of 18 road.

I'd also like to say thanks for all you have done to address mountain biking in the valley. I know the BLM gets hit with a lot more negative input than it deserves and you have to balance a lot of different interest but I think you guys are doing a great job and I look forward to what the future holds in this area!

COMMENTS

REASONABLE TO CHARGE IN
NEIGHBORHOOD OF \$10 PER NIGHT
TO OFFSET COSTS OF MAINTENANCE
AND TRASH/RECYCLE REMOVAL. ALSO
WORTH THAT AMOUNT TO HELP PAY
FOR ADDITIONAL CAMPSITES.

I camp in Fruita once or twice every year. I don't really mind if there is a fee, but if a fee is instituted I have opinions about how the revenue should be sent. It would be a great shame if the campground lost its current character. I travel to Fruita not only to mountain bike, but also enjoy the rugged outdoor experience. I don't want to see paved-over campsites and RV hookups, as these would absolutely ruin the camping experience. There are already plenty of hotels and even an RV park in town for people who enjoy more civilized vacations. Please leave the North Fruita campground unimproved for those of us who enjoy that type of experience. I am happy with the pit toilets, and don't think anything else is necessary in the area. If a fee is imposed I hope the revenue is used towards maintaining the existing area, and not on 'upgrades' that destroy the area's current character.

I am all for charging a reasonable fee for the use of camp grounds in the 18 rd. area. I believe fees should be commensurate (or slightly less than) local campgrounds/state parks in the area.

I agree - the fees will only aid in the up keep and improvements.

I welcome the fee proposal for 18 road, as it will help manage the area, keep it clean, and help inform users of the fragility of the desert ecosystem.

I am in support of a camping fee on BLM lands, including 18 Road. I also think it is time to have permitting for mountain biking, from \$15 to \$25 annual fee. There are a ton of bikes on the trail system in Colorado, especially in Grand Junction, and it should not be a free ride as I see BLM out on the trails all summer and winter and always ask myself who pays for all this, US tax payers that for the most part do not mountain bike. The users should help pay to maintain the trail system and build new trails.

I truly appreciate all that the BLM does and the great trail system we have in GJ.

This letter is to let you know that the Mesa County Commissioners support your proposal to charge fees at the North Fruita Desert Campground.

With the increased usage of the 18 Road area for camping, we feel it is important that the camping facilities be maintained in that area for citizens. We fully support your idea of charging a \$10.00 fee to allow the Bureau of Land Management to maintain a camping facility with a campground host, clean toilets, and trash containers.

COMMENTS

See both sides between fee and no fee. My vote - ~~10~~ \$10 per site, per night, expand to accommodate a few more people and sites, enough ~~to~~ to pay for employees and green receptical containers.

Thanks

Come from Steamboat Springs 3-4th year.

I am strongly in favor of a \$10 per campsite each night at the North Fruita Desert campground at the end of 18 road.

Fee access is a poor idea. No wonder every kid in America is sitting on their ass playing video games, quit nickel and diming us to death. With all these gas and oil leases plus cattle leases on our land do you not make any money from being a landlord full time?

I vote a strong no against this idea. I can't believe you're even asking. Our public lands are being destroyed from gas rigs, trucks, new roads, dust, etc. What does all that lease money go towards????????????

Please do not raise or establish fees at BLM campgrounds. There ought to be some basic things we can do without paying fees, there are so many expenses already.

Maintenance can be accomplished by volunteers rather than campground hosts who take up a valuable site and by volunteers and community service workers from the court system.

Please consider these comments and thanks for taking input from the public.

To all the people who use Bureau of Land Management land and camping areas: It costs money for upkeep and picking up trash that other people leave. If you don't like the cost of a campsite, I suggest you should not use it. You pay money to stay in a motel; you pay money to go to a movie. If you don't want to pay for use of our BLM resources, then don't use them.

There has been recent discussion regarding the proposal to establish a usage fee for the campground on 18 Rd that serves the North Fruita Desert recreation area. This campground and surrounding areas experience significant mountain bike visitor use during the peak season. As a very important part of the camping and riding experience in the North Fruita Desert area, COPMOBA believes that it is important for the BLM to maintain this campground in a suitable manner. COPMOBA supports the implementation of a modest user fee to aid in allowing BLM to maintain the campground, provide toilet and trash services, and possibly even establish a campground host. Discussions within COPMOBA have centered around fee amounts in the \$8 - \$12/day range.

COPMOBA also supports further expansion of the campground as informal camping in adjacent areas has expanded to extreme levels in recent years. We believe that it would improve the sanitation and sustainability issues associated with dispersed camping if the campground area were to be expanded at the earliest possible time.

COMMENTS

