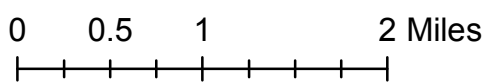




Wolford Mountain Area - Winter Recreation

December 15 - April 15

Any route without a sign indicating it is open to motorized use is closed. Using trails or areas shown as closed is prohibited. Parking is limited to 50 feet from centerline of the road or trail.



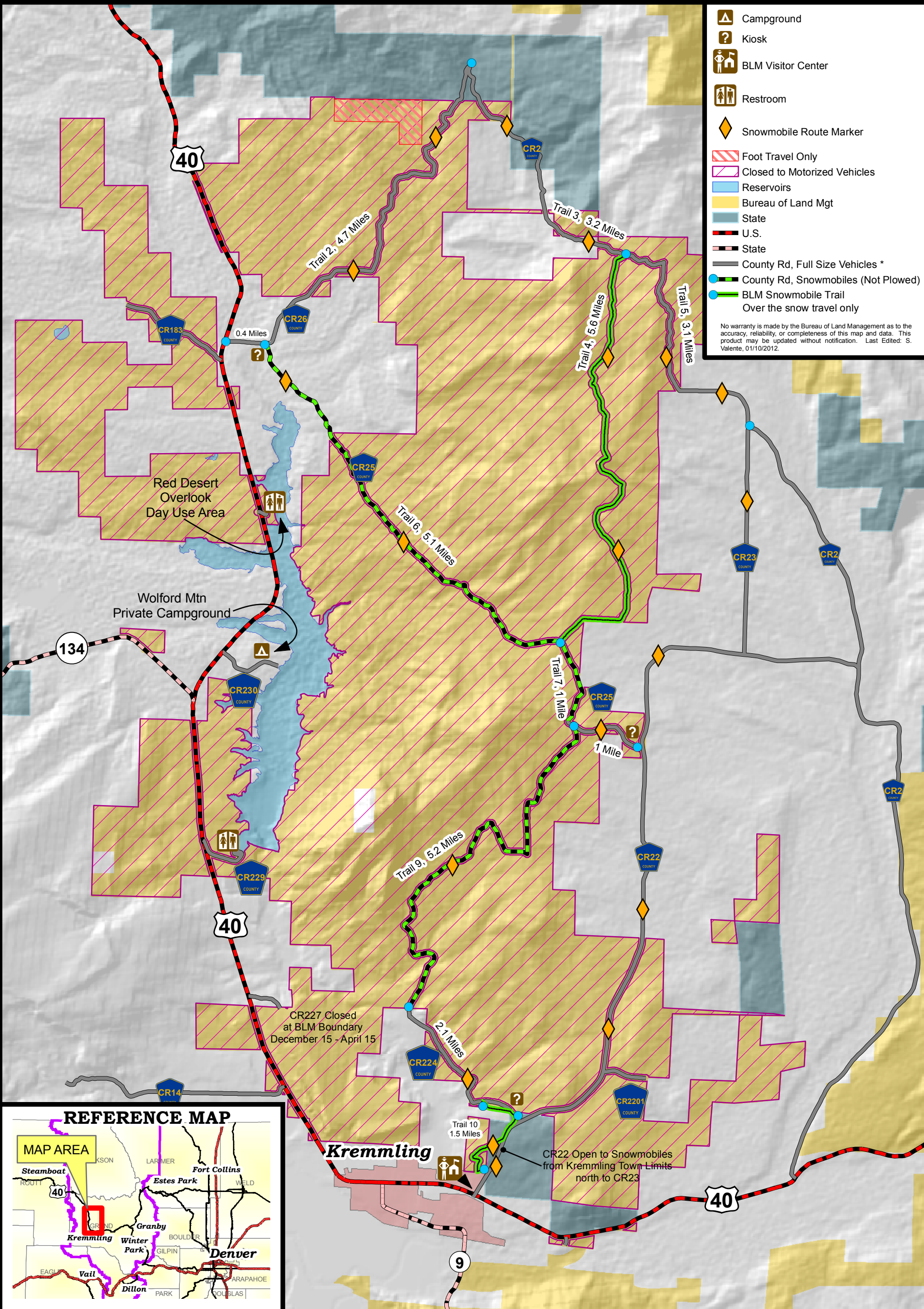
Please respect private property.

In Case of Emergency, Dial 911



1:65,903

*** ROADS OPEN TO FULL SIZE VEHICLES MAY NOT BE PASSABLE**



	Campground
	Kiosk
	BLM Visitor Center
	Restroom
	Snowmobile Route Marker
	Foot Travel Only
	Closed to Motorized Vehicles
	Reservoirs
	Bureau of Land Mgt
	State
	U.S.
	State
	County Rd, Full Size Vehicles *
	County Rd, Snowmobiles (Not Plowed)
	BLM Snowmobile Trail
	Over the snow travel only

No warranty is made by the Bureau of Land Management as to the accuracy, reliability, or completeness of this map and data. This product may be updated without notification. Last Edited: S. Valente, 01/10/2012.

