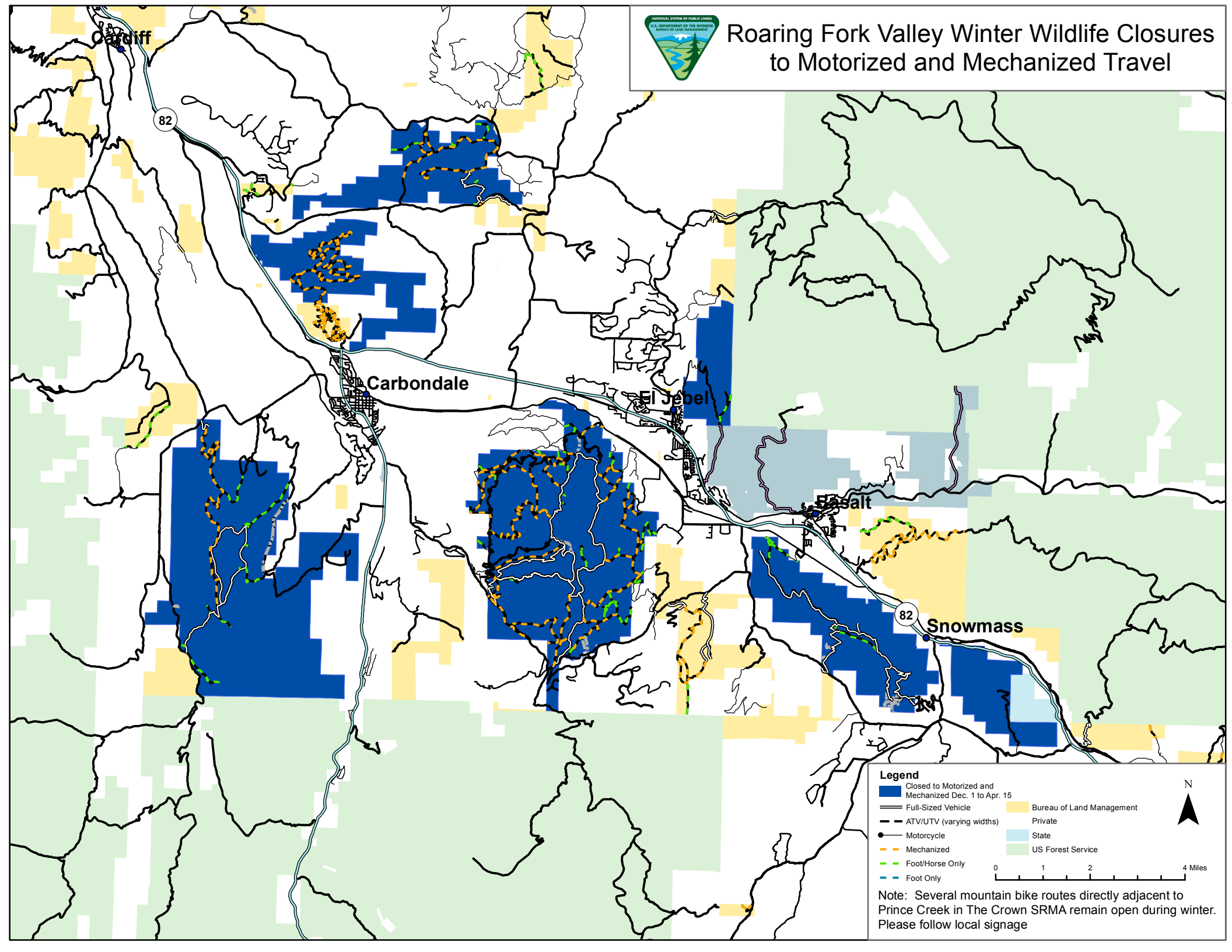




Roaring Fork Valley Winter Wildlife Closures to Motorized and Mechanized Travel



Legend

Closed to Motorized and Mechanized Dec. 1 to Apr. 15	Bureau of Land Management
Full-Sized Vehicle	Private
ATV/UTV (varying widths)	State
Motorcycle	US Forest Service
Mechanized	0 1 2 4 Miles
Foot/Horse Only	
Foot Only	



Note: Several mountain bike routes directly adjacent to Prince Creek in The Crown SRMA remain open during winter. Please follow local signage