



Photo Credit: Randy Kyes

# Muddy Mountains Wilderness

## Bureau of Land Management

Southern Nevada District Office  
4701 N. Torrey Pines Drive  
Las Vegas, NV 89103  
<http://www.blm.gov/nv/st/en/fo/lvfo.1.html>

Size: 48,019 acres  
Elevation Range: 1,800 - 5,387 feet  
Designation: Clark County Conservation of Public Land and Natural Resources Act of 2002

### Area Description

Just an hour outside Las Vegas lie the Muddy Mountains, a magnificent range of rugged limestone cliffs and canyons along the north shore of Lake Mead. A thrust fault layers limestone over sandstone, with a "window" eroded through to reveal sandstone underneath at the Bowl of Fire and Hidden Valley. Contained partially within the Lake Mead National Recreation Area, the Muddy Mountains Wilderness is jointly managed by the Bureau of Land Management and the National Park Service.

About seven miles of designated trail wind through the stunning and colorful sandstone outcrops of Hidden Valley, the conglomerate cliffs of Gale Hills, and the limestone slot canyon Anniversary Narrows. Petroglyphs, rock alignments, and other cultural resources in the area contribute to the area's eligibility for the National Register of Historic Places.

Creosote is abundant, with desert catalpa trees nestled in the washes. Rare plants, including Las Vegas buckwheat and bear poppy, thrive in the red, gypsum-rich soils found in the lower elevations. Desert tortoise and bighorn sheep roam the wilderness, and banded Gila monsters can be found near water.



Photo Credit: Randy Kyes

### Directions

Hidden Valley may be accessed by driving the Bitter Springs Backcountry Byway approximately three miles east on the Valley of Fire Highway from Interstate 15. About four miles south of the Valley of Fire Highway on this rough dirt road, turn right at the sign for Color Rock Quarry. About three miles further lies the trailhead for Hidden Valley. Four-wheel drive and high clearance vehicles are recommended as road conditions are rough and variable.

The Bowl of Fire and Anniversary Narrows are accessible from the paved Northshore Road. Callville Wash Road/Road 94 turns north off Northshore Road at mile marker 16. Four-wheel drive is recommended. Road 94A turns left off of Callville Wash Road, leading to Anniversary Narrows. From Callville Wash Road/Road 94, each of three main washes that intersect the Northshore Road lead to the Bowl of Fire.

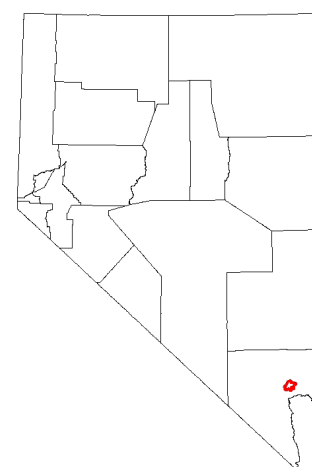


Photo Credit: Randy Kyes

### Recreation

The Muddy Mountains Wilderness provides a striking backdrop for hiking, horseback riding, and camping. Rock climbing and scrambling are allowed without the placement of fixed anchors. Hunting is permissible, but because of fragile vegetation and cryptogamic soil crusts, cross-country use of recreational riding or pack stock is not permitted. The only exception is for members of a hunting party in possession of a valid state hunting license and tag, and in pursuit of big game during hunting. Backcountry permits are not required.

*Motorized vehicles, mechanized equipment, and mechanical transport are not permitted in designated wilderness.*

### Maps

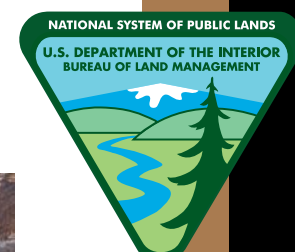
USGS 7.5 Quadrangle Maps: Dry Lake SE, Muddy Peak, Bitter Spring, Government Wash, Callville Bay.

### Additional Information

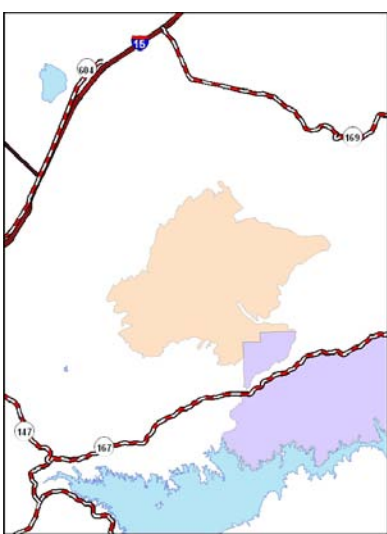
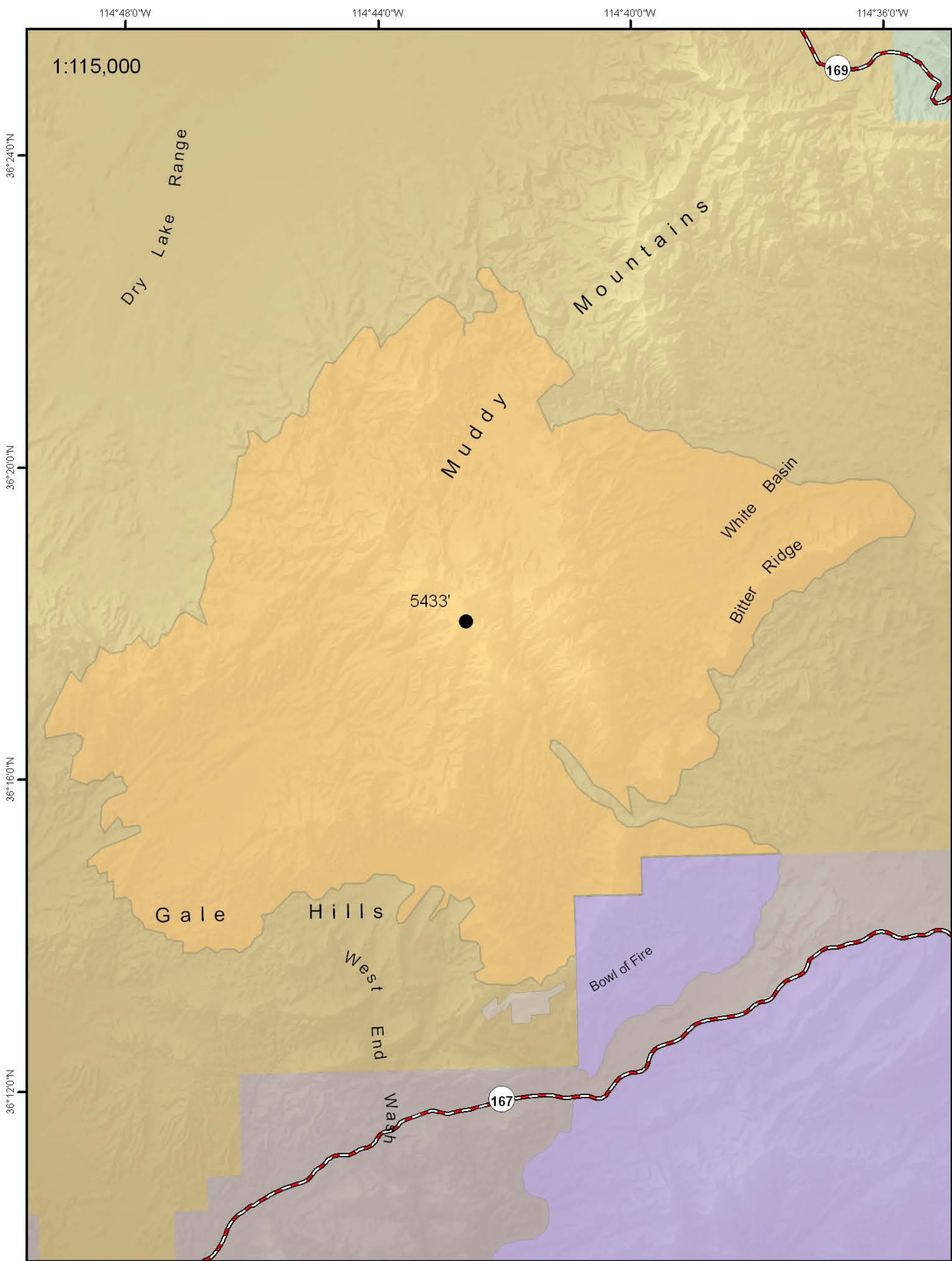
- No camping is allowed within sight of trails, and half a mile from National Park Service designated roads.
- No camping is allowed within 300 feet of water sources.
- Recommended maximum group size: 12 members.
- Camping is limited to a total of 14 days in one location, and no more than 90 days total within any consecutive 12-month period.
- Stock cannot be restrained within 200 feet of water.
- Campfires are allowed, except during regional fire restrictions, with use of a fire pan or blanket. Visitors are encouraged to only use camp stoves.



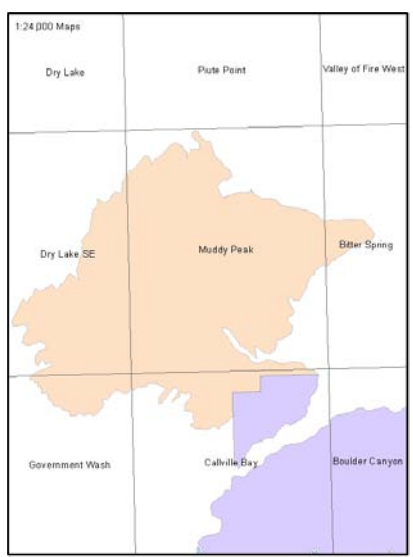
Photo Credit: Randy Kyes



# Muddy Mountains Wilderness



- Legend**
- Interstate
  - State Highway
  - Highest point
  - Bureau of Land Management Wilderness
  - National Park Service Wilderness
  - Bureau of Land Management
  - National Park Service
  - Nevada State
  - Private
  - Lake Mead



No warranty is made by the Bureau of Land Management as to the accuracy, reliability, or completeness of these data for individual use or aggregate use with other data. Original data were compiled from various sources. This information may not meet National Map Accuracy standards. This product was developed through digital means and may be updated without notification.