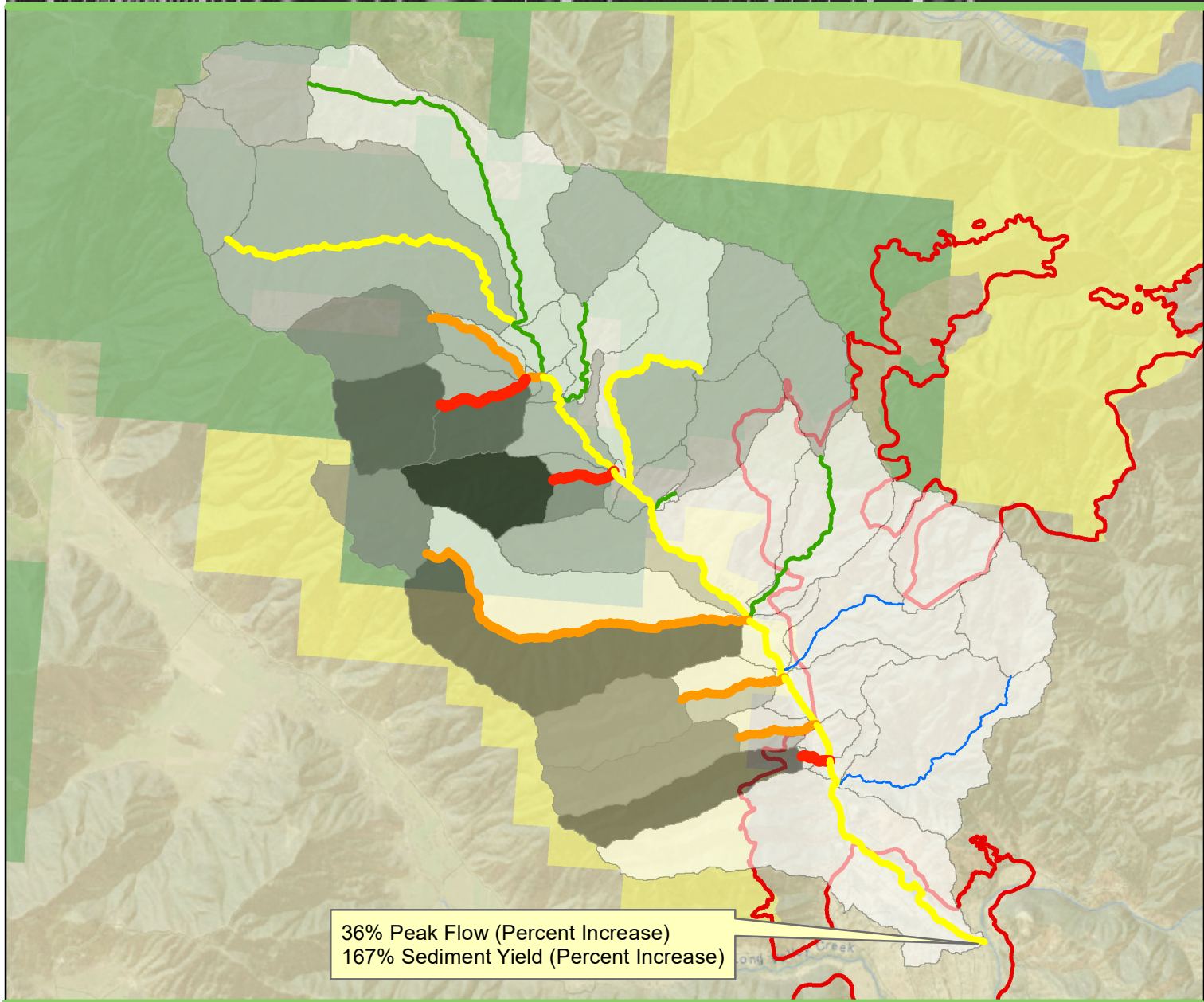


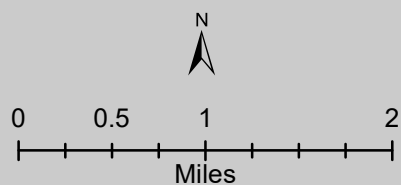


**U.S. Department of Interior
Bureau of Land Management - Ukiah**



36% Peak Flow (Percent Increase)
167% Sediment Yield (Percent Increase)

**Wolf Creek
Watershed Response
11,948 Acres
2018 Ranch Fire**



- Fire Perimeter
- Bureau of Land Management
- USDA Forest Service
- Peak Flow (Percent Increase)**
- 0
- 1 - 26
- 27 - 45
- 46 - 117
- 118 - 296

- Sediment Yield (Percent Increase)**
- 0 - 169
 - 170 - 834
 - 835 - 1671
 - 1672 - 4182
 - 4183 - 6011

This map is for display purposes only.
Storm Modeled is a 2 hour 25 year event.
Precipitation: 41.66mm
Storm Type: SCS Type 2
BAER-THSP-KE 8/18/18

