



## Red Rock Canyon NCA Environmental Education Program

### Pine Creek Trail

**Location:** Within the Scenic Loop, just before mile 11 at Pine Creek Trailhead

**Length:** 2 miles round trip

**Difficulty:** Easy-Moderate; 300 foot elevation gain

**Estimated Minimum Hike Time:** 1½ hours

**Facilities:** Two vault toilets at trailhead. No water available.

**General Description:**

This trail takes you across the open desert, along a seasonal creek, and to an old homestead site.

**Background:**

Many different people have inhabited the area of Pine Creek. The little creeks of Pine Creek are fed by rainwater and snow melt naturally stored in the porous sandstone, making it a uniquely reliable water source. Ancestral Puebloans and Southern Paiute seasonally used the area to gather plants and hunt for game. Later on, settlers were also attracted to the area.

In the early 1920s, Horace Wilson settled and built his home here. The water source allowed Wilson to grow a large garden and orchard. In 1933, Wilson left Pine Creek to reside in his home on Mesquite Street in Las Vegas. His companion, Leigh Hunt, died the same year and the home went unattended and was later vandalized. Today the foundation of the homestead and surrounding meadow is all that remains.

In 1967, the State of Nevada took over the rundown Pine Creek area and hired archeologists, botanists, and hydrologists to study it. Very fragile plants dot the landscape, including species from an earlier age, especially large sword ferns that were planted by the early homesteaders. Big ponderosa pines are unusual for this desert area but are found here. Close by are the canyon's thrust faults, which moved older limestone horizontally over the top of younger sandstone.

Pine Creek has received a special designation due to its unique biological community. It provides a good example of biodiversity of plant and animal life found in the Mojave Desert.

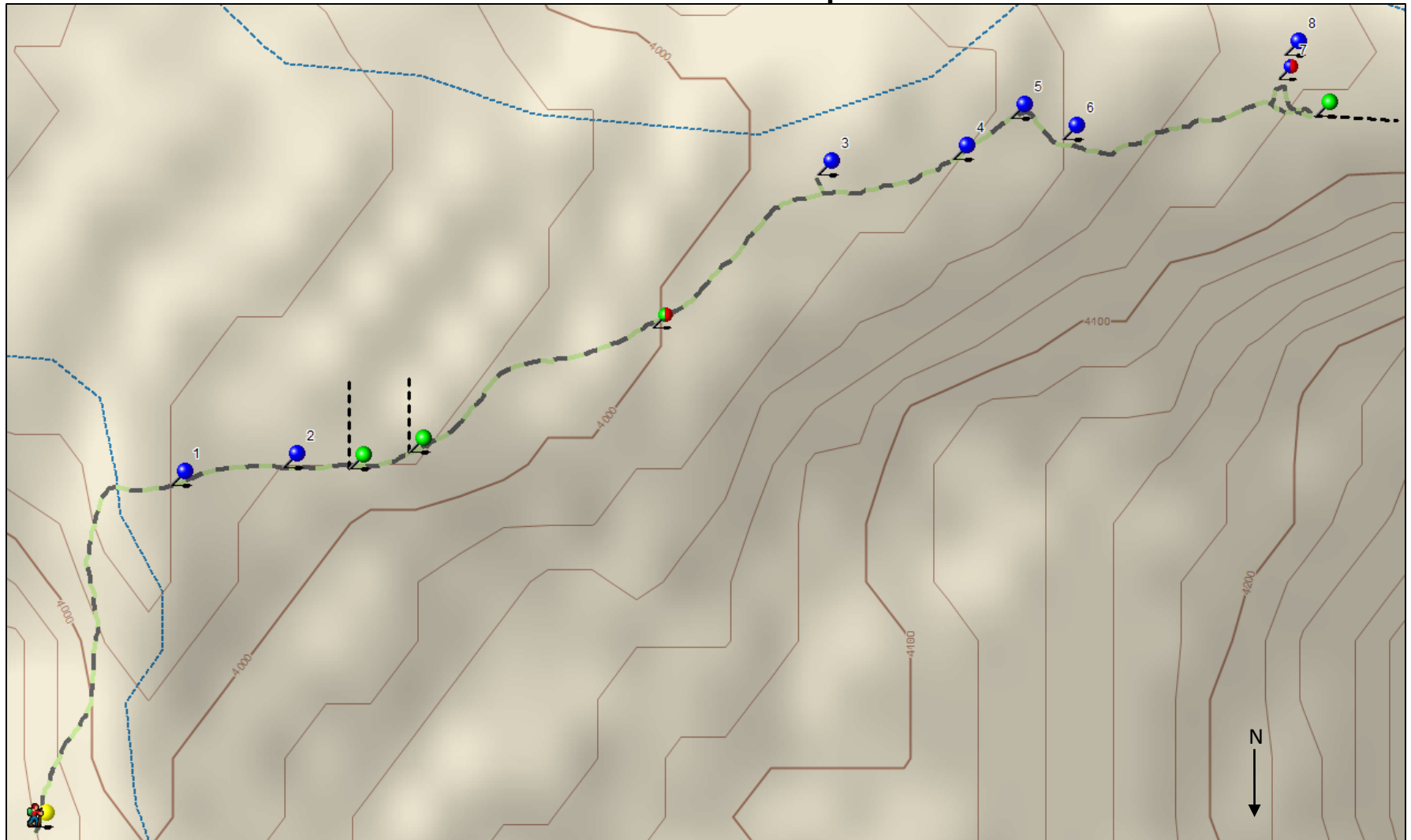
**About the Hike:**

This trail includes two historical signs of the Wilson homestead: the remnants of a gate and the house foundation.




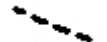



While this trail continues past what is shown, the trail map ends the trail at the old homestead foundation to make it a more appropriate length for students. The Fire Ecology Loop is not shown on this trail map, but may also be added to this hike. Please see the Fire Ecology Loop trail guide for more information on that trail.

The following trail map includes markers for suggested activity stop locations. It is not necessary to use any or all of these locations, and depending on the activities you choose you may only use a few. Please see each activity for which stops are suggested for that particular activity's location.

# Pine Creek Trail Map



**Legend**

 Trail	 Trailhead	 Trail Signs
 Other trails	 Suggested Activity Stop Locations	 Wayside signs
	 Historical Remnants	

