



Photo Credit: Sendi Kalcic

La Madre Mountain Wilderness

Bureau of Land Management

Southern Nevada District Office
4701 N. Torrey Pines Drive
Las Vegas, NV 89103
<http://www.blm.gov/nv/st/en/fo/lvfo.1.html>

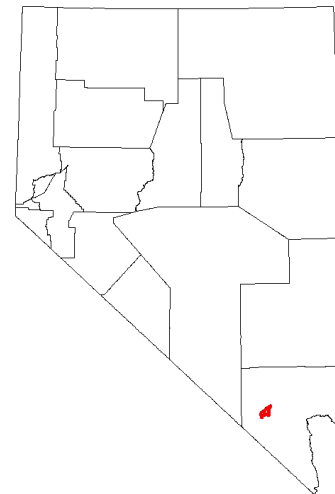
Size: 47,180 acres
Elevation Range: 3,600 - 9,600 feet
Designation: Clark County Conservation of Public Land and Natural Resources Act of 2002

Area Description

The La Madre Mountain Wilderness, dominated by its namesake range, La Madre Mountain, is one of the largest wilderness areas in southern Nevada. A classic example of both basin and range formation and thrust faults, the geology of the La Madre Mountain Wilderness features a breathtaking array of canyons, ridges, and mountain peaks sprawled across 47,180 acres just west of Las Vegas. Portions of this vast wilderness are within Red Rock Canyon National Conservation Area and the Spring Mountains National Recreation Area, managed by the Bureau of Land Management and the United States Forest Service, respectively.

With an elevation range spanning 6,000 feet, the La Madre Mountain Wilderness supports a wide variety of plant and animal life. The higher elevations, topping out at 9,600 feet above sea level, provide crucial summer habitats for bighorn sheep, mule deer, and a small herd of elk seeking refuge from the scorching heat of the lower desert.

A number of prehistoric sites can be found here as well, including pictographs, petroglyphs, agave roasting pits and rock shelters. Brownstone Basin's high concentration and variety of cultural resources, including rare multicolored pictographs, earned it a spot on the National Register of Historic Places.



Directions

The La Madre Mountain Wilderness is about 28 miles west of downtown Las Vegas. Red Rock Scenic Loop Drive approaches the wilderness from the southeast. Lovell Canyon Road provides access from the southwest, continuing east on Rocky Gap Road to La Madre Spring, where the road meets the Scenic Loop Drive. From the north, visitors can reach the wilderness by taking Kyle Canyon Road to Harris Spring Road or Barricade Road. Road conditions vary.

Recreation

The La Madre Mountain Wilderness provides a stunning stage for hiking, rock climbing, horseback riding, wildlife viewing and camping. Hunting is allowed with proper licensing; however, target practice is prohibited.

Motorized vehicles, mechanized equipment, and mechanical transport are not permitted in designated wilderness.

Maps

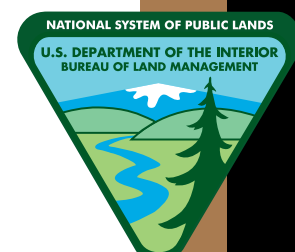
USGS 7.5 Quadrangle Maps: Grapevine Spring, Tule Springs Park, La Madre Spring, La Madre Mountain, Mountain Springs, and Blue Diamond.

Additional Information

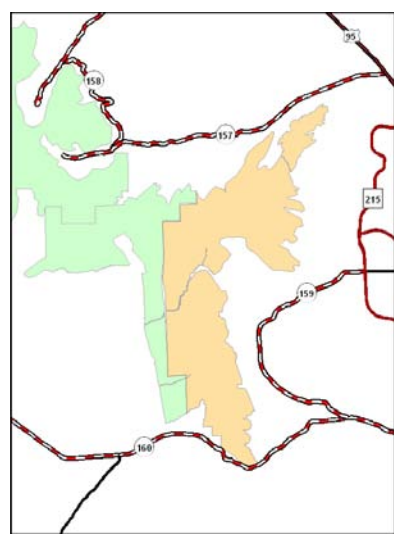
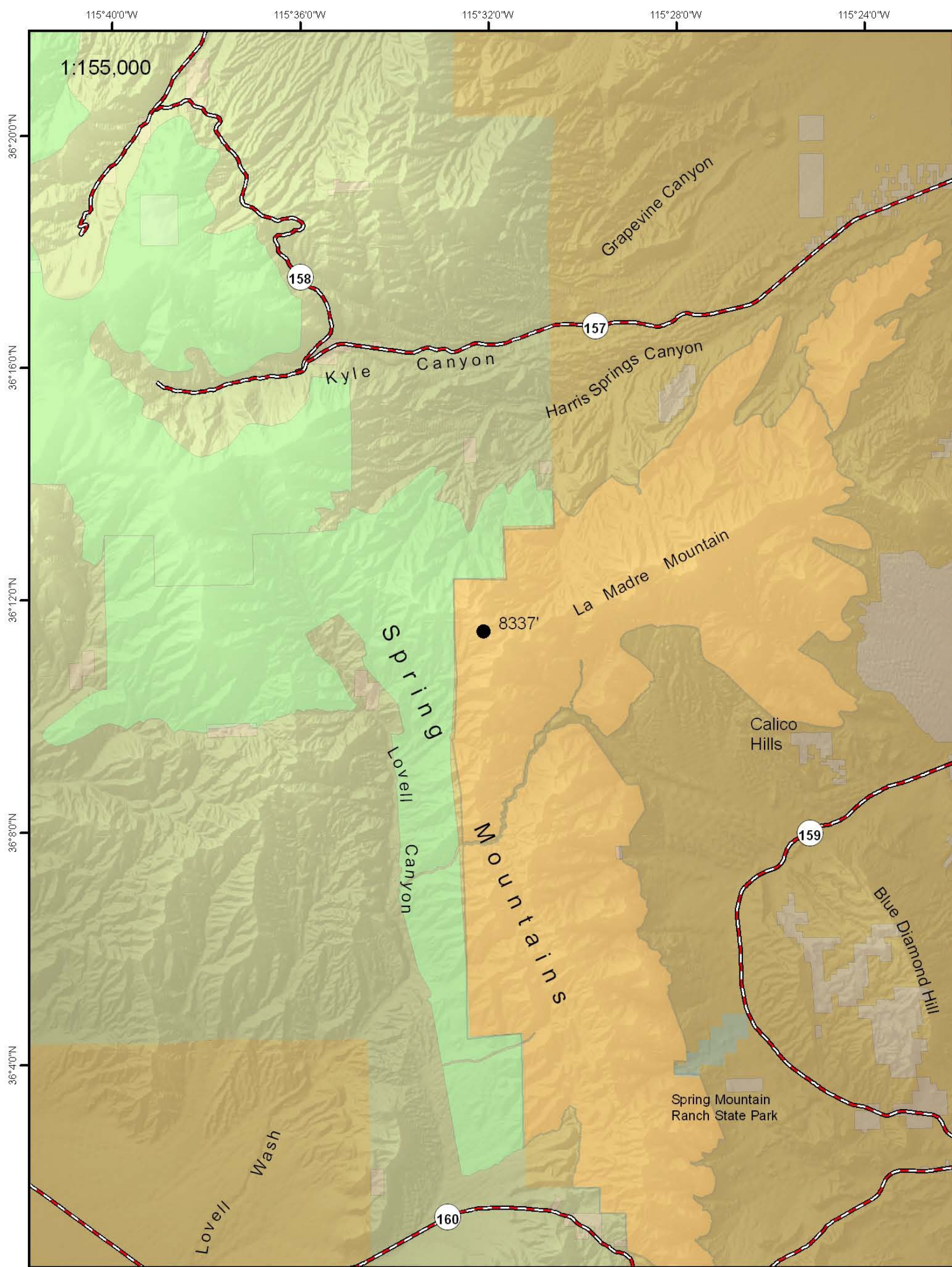
- Please limit group sized to 12 members.
- Maximum length of stay: 14 days
- Camping is prohibited within one quarter mile of springs and riparian areas.
- No rock climbing within 50 feet of petroglyphs and pictographs.
- Target shooting is prohibited.
- Other than incidental browsing, riding and pack stock animals may be fed only packed-in, certified, weed-free feed.
- Non-commercial hunting and trapping is permitted subject to applicable state regulation.
- Alteration of any rock surfaces by gluing, chipping, and chiseling is not allowed.



Photo Credit: Sendi Kalcic



La Madre Mountain Wilderness



- Legend**
- US Highway
 - State Highway
 - County Highway
 - Arterial
 - Highest point
 - Bureau of Land Management Wilderness
 - Forest Service Wilderness
 - Bureau of Land Management
 - Forest Service
 - Private



No warranty is made by the Bureau of Land Management as to the accuracy, reliability, or completeness of these data for individual use or aggregate use with other data. Original data were compiled from various sources. This information may not meet National Map Accuracy standards. This product was developed through digital means and may be updated without notification.