



**FOREST SERVICE AND
BUREAU OF LAND MANAGEMENT**

Sawtooth National Recreation Area and Jerry Peak Wilderness Addition

Hemingway-Boulders, Jim McClure-Jerry Peak and White Clouds Wilderness Areas

Interim Maps and Guidelines 2016



“A wilderness, in contrast with those areas where man and his own works dominate the landscape, is hereby recognized as an area where the earth and its community of life are untrammeled (wild and free from human control or manipulation) by man, where man himself is a visitor who does not remain. An area of wilderness is further defined to mean ... an area of undeveloped Federal land retaining its primeval character and influence, without permanent improvements or human habitation, which is protected and managed so as to preserve its natural conditions...”

—The Wilderness Act, 1964

U.S. President Barack Obama signed into law Congressman Mike Simpson’s legislation creating three new Wilderness areas in Idaho. The legislation, The Sawtooth National Recreation Area and Jerry Peak Wilderness Additions Act (P.L. 114-46), was signed August 7, 2015, in a signing ceremony at the White House.

The Sawtooth National Recreation Area and Jerry Peak Wilderness Additions Act designates three areas as part of the National Wilderness Preservation System, including the Jim McClure-Jerry Peak Wilderness (116,898 acres), White Clouds Wilderness (90,769 acres) and Hemingway-Boulders Wilderness (67,998 acres). These protected areas preserve 275,665 acres of high mountain backcountry with crystal lakes and abundant wildlife.

The U.S. Forest Service manages federal lands within the newly designated wilderness areas with the exception of more than 24,000 acres of the Jim McClure-Jerry Peak Wilderness, and 450 acres of the White Clouds Wilderness which is managed by the Department of the Interior’s Bureau of Land Management (BLM). The Wilderness Act, signed into law in 1964, established the highest level of conservation protection for federal lands. The Forest Service and the Bureau of Land Management will work together to develop management plans for the newly designated Wilderness areas during the next 3 years.

“I am grateful to President Obama for his signature on this important legislation and humbled by the tireless work of countless Idahoans that led to its passage,” said Congressman Simpson. *“The Boulder White Clouds area is now protected, in perpetuity, by the gold standard of preservation designations. I am proud that this was accomplished through a truly collaborative process that produced an Idaho solution to decades of conflict and debate. Without the work of our many partners in this process, and especially the tireless efforts of Senator Jim Risch, today’s signing would not have been possible.”*



**FOREST SERVICE AND
BUREAU OF LAND MANAGEMENT**

Sawtooth National Recreation Area and Jerry Peak Wilderness Addition

Hemingway-Boulders, Jim McClure-Jerry Peak and White Clouds Wilderness Areas

Interim Maps and Guidelines 2016

FOREST SERVICE

Salmon Challis National Forest
1206 South Challis Street
Salmon, ID 83467
208-756-5100

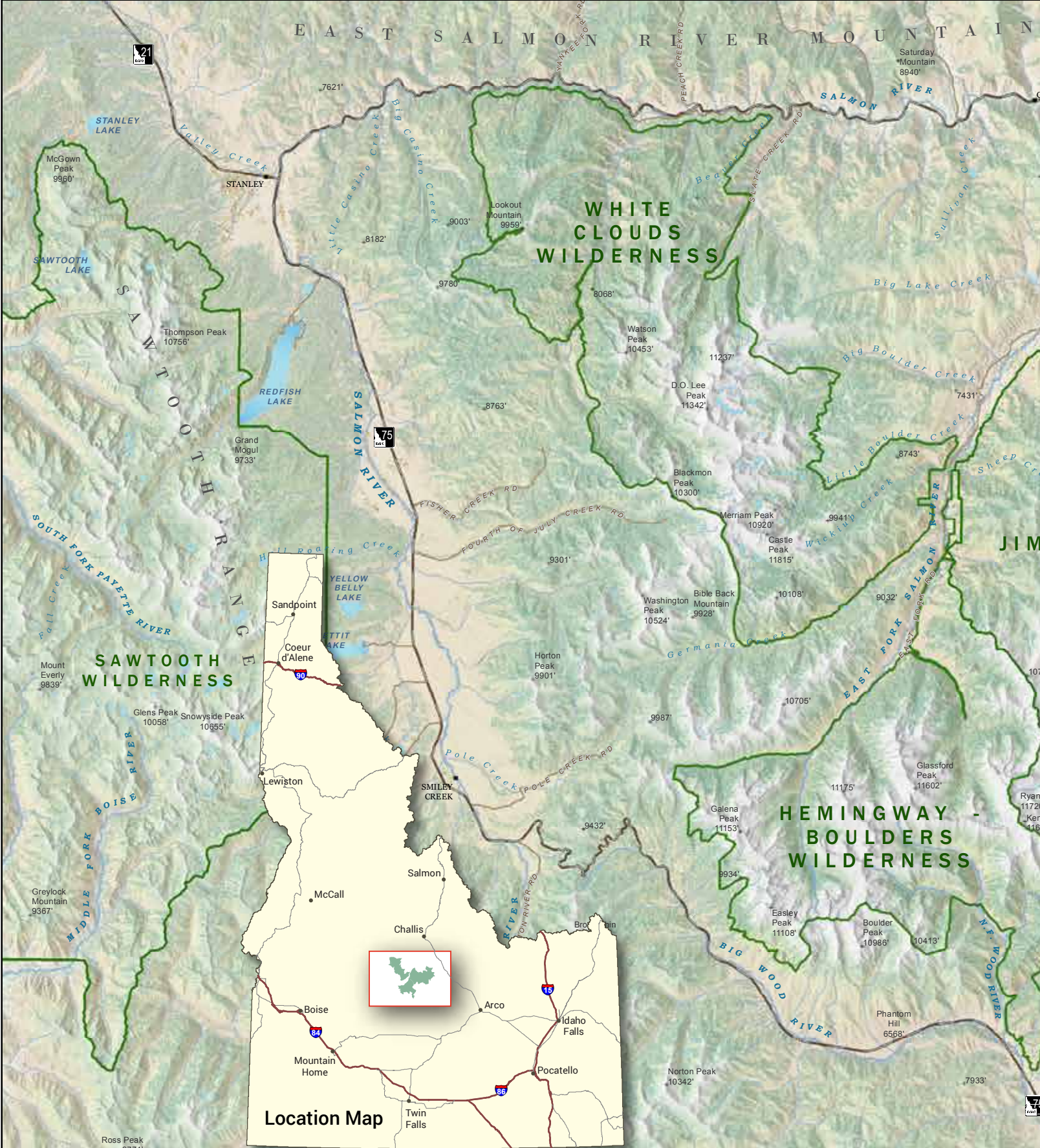
Sawtooth National Forest
2647 Kimberly Road East
Twin Falls, ID 83301
208-737-3200

BUREAU OF LAND MANAGEMENT

Challis Field Office
1151 Blue Mountain Road
Challis, Idaho 83226
208-879-6200



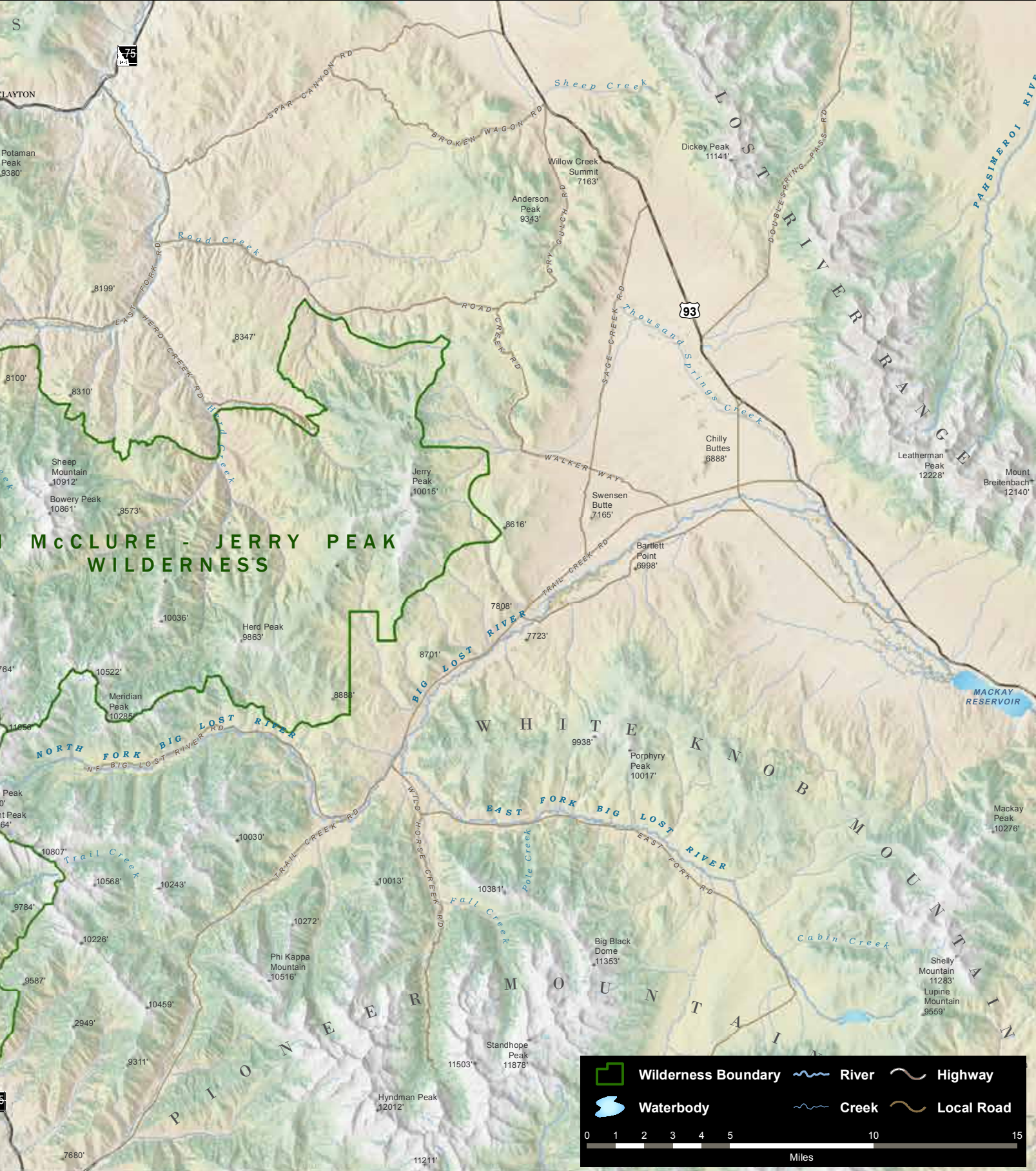
Sawtooth National Recreation Area



Map: J. Murgoitio, Bureau of Land Management Idaho State Office

KETCHUM 3 MILES

and Jerry Peak Wilderness Addition, Idaho



Wilderness Fact Sheet

Hemingway-Boulders, Jim McClure-Jerry Peak and White Clouds

Specifically P.L. 114-46 legislation created the following:

- **Wilderness:** Three new wilderness areas total 275,665 acres. The Hemingway-Boulders Wilderness (67,998 acres) will be administered by the Sawtooth National Forest (SNF). The White Clouds Wilderness (90,769 acres) will be administered cooperatively by the SNF and the BLM. The Jim McClure-Jerry Peak Wilderness (116,898 acres) will be administered cooperatively by the Salmon-Challis National Forest and the BLM. Permits are not currently required for visiting any of the wilderness areas, though we ask that visitors register at the trailhead registration boxes.
- **Multiple Use:** Four BLM wilderness study areas are released back to multiple use: the Jerry Peak Wilderness Study Area, the Jerry Peak West Wilderness Study Area, the Corral-Horse Basin Wilderness Study Area and the Boulder Creek Wilderness Study Area totaling 155,003 acres. Management actions, including motorized travel restrictions and seasonal closures for wildlife protection, remain in effect in these areas. Recommended wilderness identified in the Sawtooth National Forest 2012 Land and Resource Management Plan not included in the P.L. 114-46 legislation remain part of the forest management plan.
- **Motorized and Mechanized Uses Prohibited in National Forests and BLM Wilderness:** Possessing or using a motor vehicle, motor boat or motorized equipment, except as authorized by Federal Law or regulation; possessing or using a hang glider or bicycle; and landing of aircraft, or dropping or picking up of any material, supplies, or person by means of aircraft, including a helicopter is prohibited. Motorized equipment including chainsaws, drones, and radio-controlled airplanes are also prohibited.

All areas currently open to mountain bikes outside of the wilderness remain open subject to the Sawtooth National Forest travel plan.

The 2008 BLM Challis Travel Management Plan and the 2009 Salmon-Challis National Forest Motor Vehicle Use Decision created a designated system of roads and motorized trails.

No routes outside the wilderness areas currently open to vehicles, or trails open to two-wheeled motorized use, have been closed as a result of creation of the Hemingway-Boulders, Jim McClure-Jerry Peak, and White Cloud Wilderness areas.

Wilderness Fact Sheet

Hemingway-Boulders, Jim McClure-Jerry Peak and White Clouds

- **Grazing:** Grazing plays an important role in the heritage and economies of rural Blaine and Custer counties. The wilderness legislation allows permittees with allotments within the boundaries of the wilderness areas to retain or to voluntarily retire their grazing permits and be eligible for compensation from a third party conservation group.
- **Support to Counties:** Over \$5 million in grants have been provided to Custer County and the surrounding communities for a community center as well as improvements to the county health clinic, EMT support and Trail Creek Highway. Individual parcels of federally-managed land will be conveyed to Custer and Blaine counties and to the rural communities of Stanley, Challis, Mackay, and Clayton through BLM's Recreation and Public Purposes process.
- **Hunting and Fishing:** The State of Idaho manages hunting and fishing through the Idaho Department of Fish and Game. Those regulations did not change with the signing of P.L. 114-46; however, no use of motor vehicles, motorized equipment, motorboats, landing of aircraft, or other form of mechanical transport (such as bicycles or game carts) is permitted within the three wilderness areas.

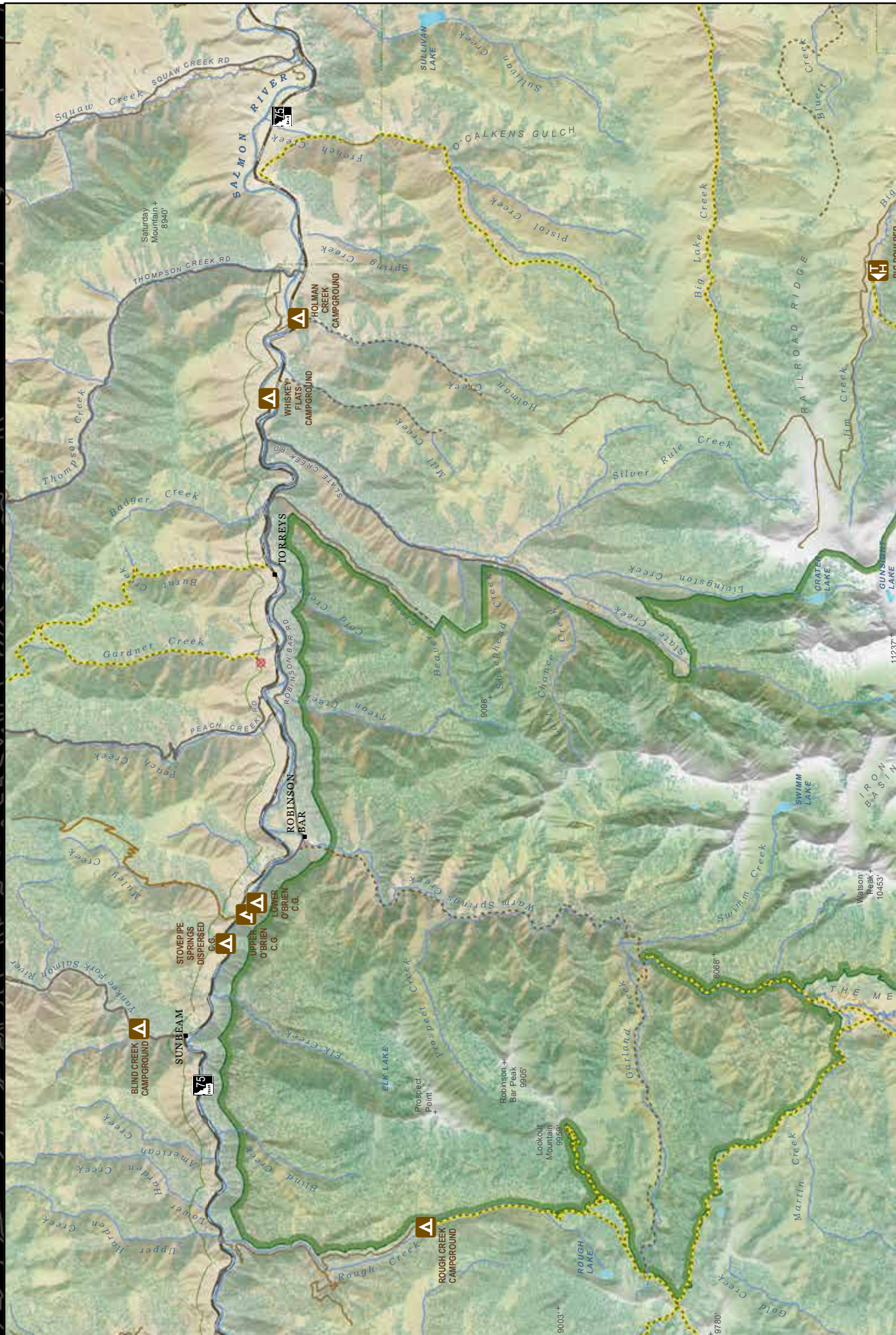
The SNF will remain as the principle administrative body and the current management of the Sawtooth National Recreation Area (NRA) will remain intact under the existing SNRA law (P.L. 92-400) and the existing Sawtooth NRA management plans.

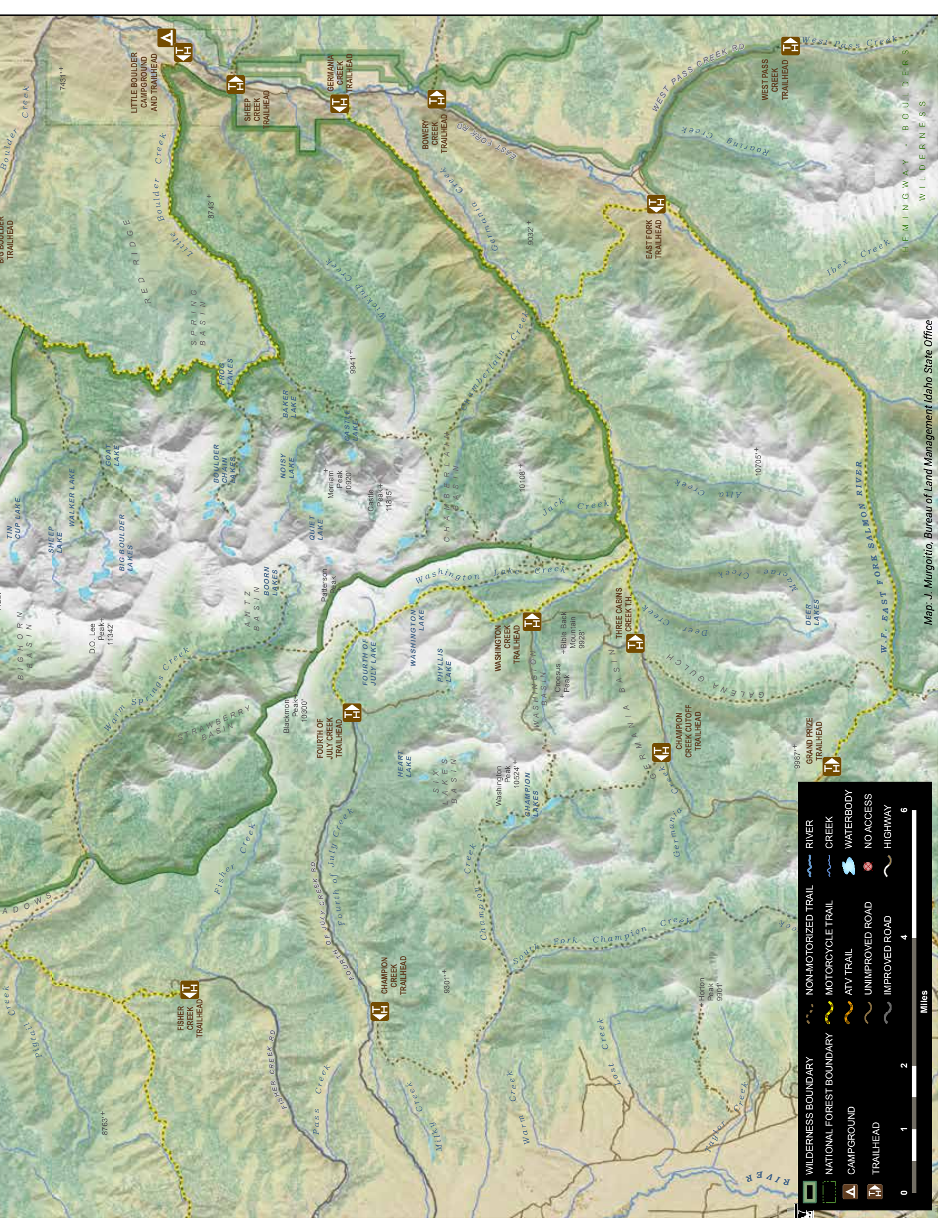
Please check with local land management agencies for additional information and site-specific regulations. Refer to inside cover page for contact information.



The lakes of the Four Lakes basin hold ice and snow well into July, White Cloud Wilderness. Photography © Mark Lisk

White Clouds Wilderness, Idaho





Map: J. Murguito, Bureau of Land Management Idaho State Office

	WILDERNESS BOUNDARY		NON-MOTORIZED TRAIL		RIVER
	NATIONAL FOREST BOUNDARY		MOTORCYCLE TRAIL		CREEK
	CAMPGROUND		ATV TRAIL		WATERBODY
	TRAILHEAD		UNIMPROVED ROAD		NO ACCESS
			IMPROVED ROAD		HIGHWAY

0 1 2 4 6 Miles

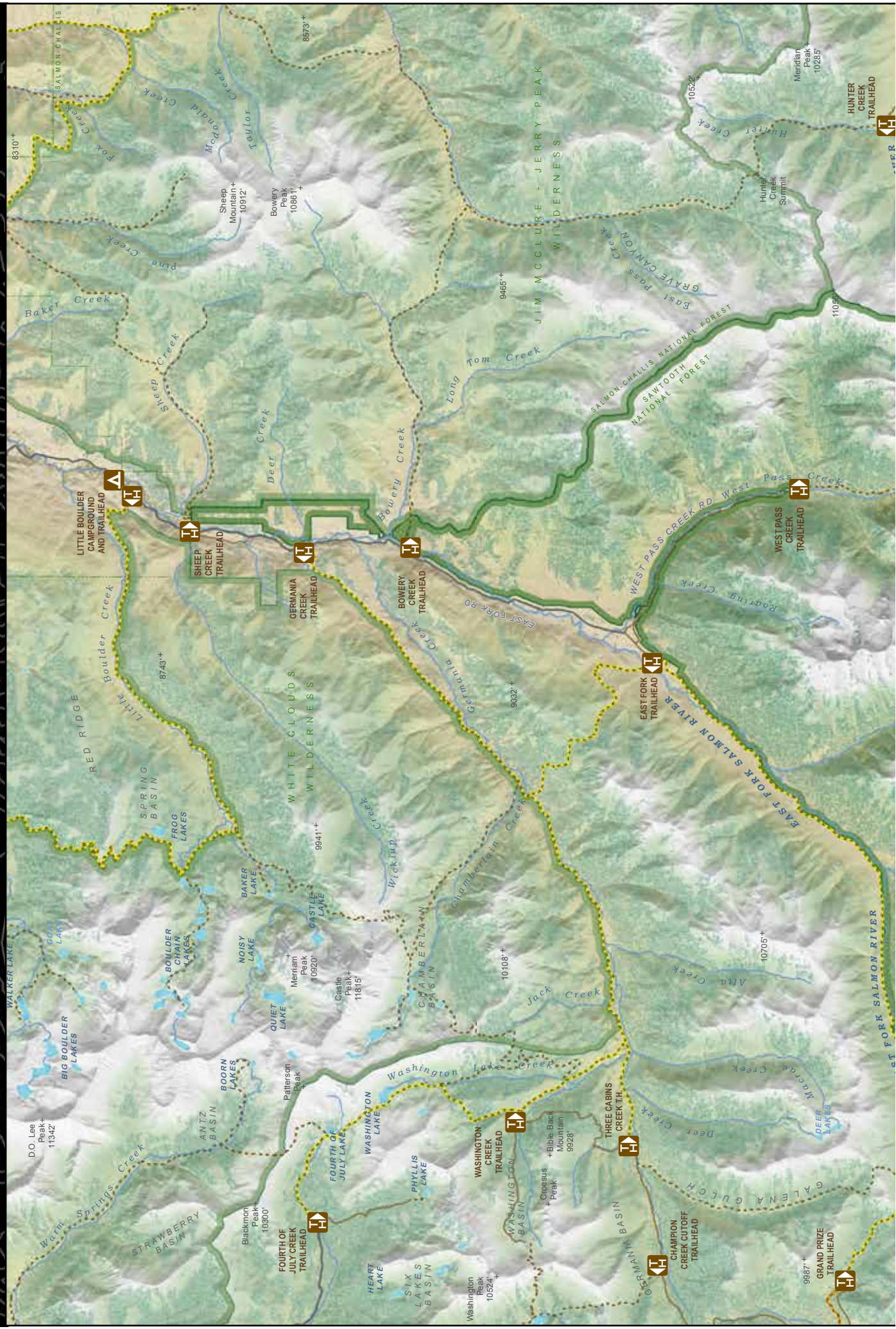


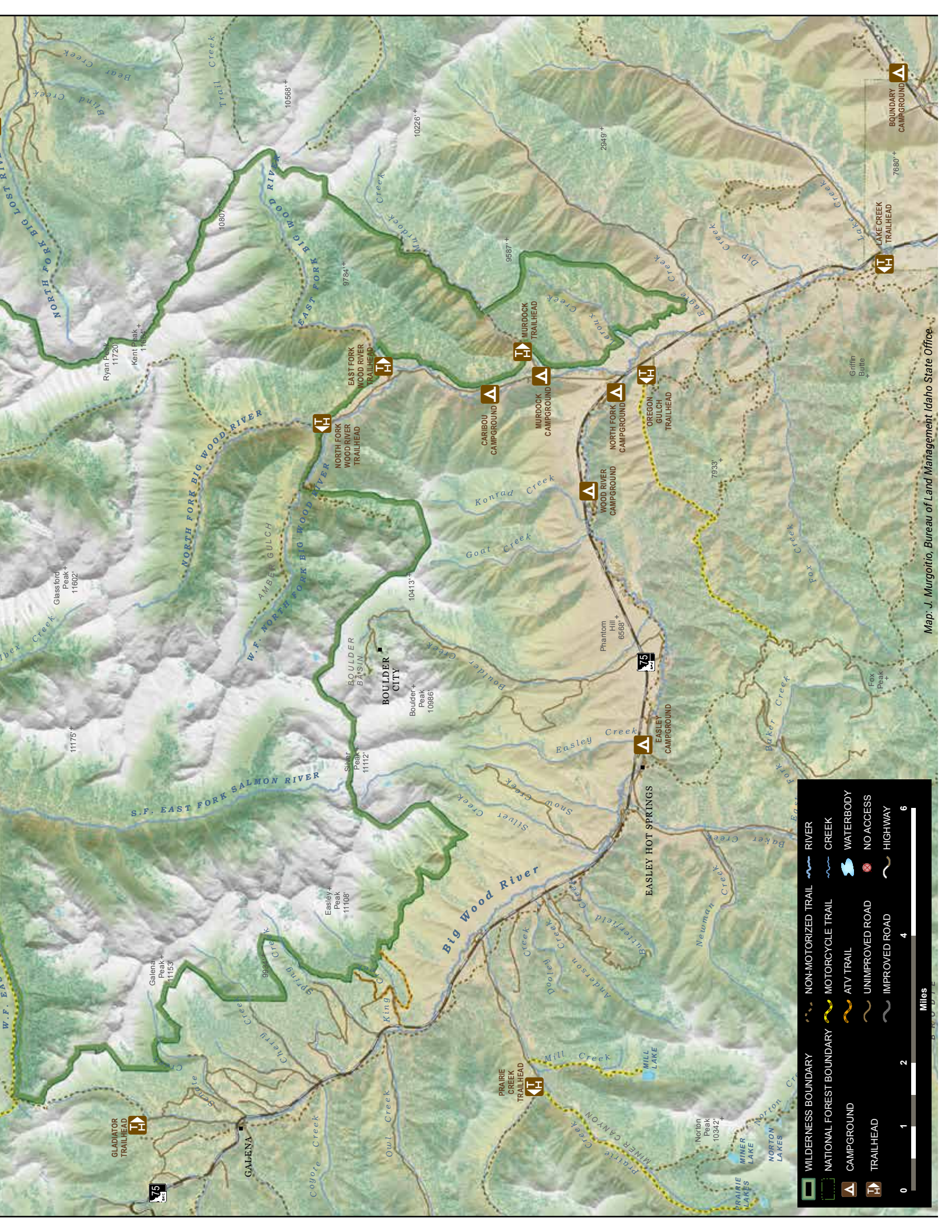
Sunrise on a small pond at Windy Devil Pass, in the White Cloud Wilderness. Photography © Mark Lisk





Hemingway-Boulders Wilderness, Idaho





Map: J. Murgotio, Bureau of Land Management, Idaho State Office.

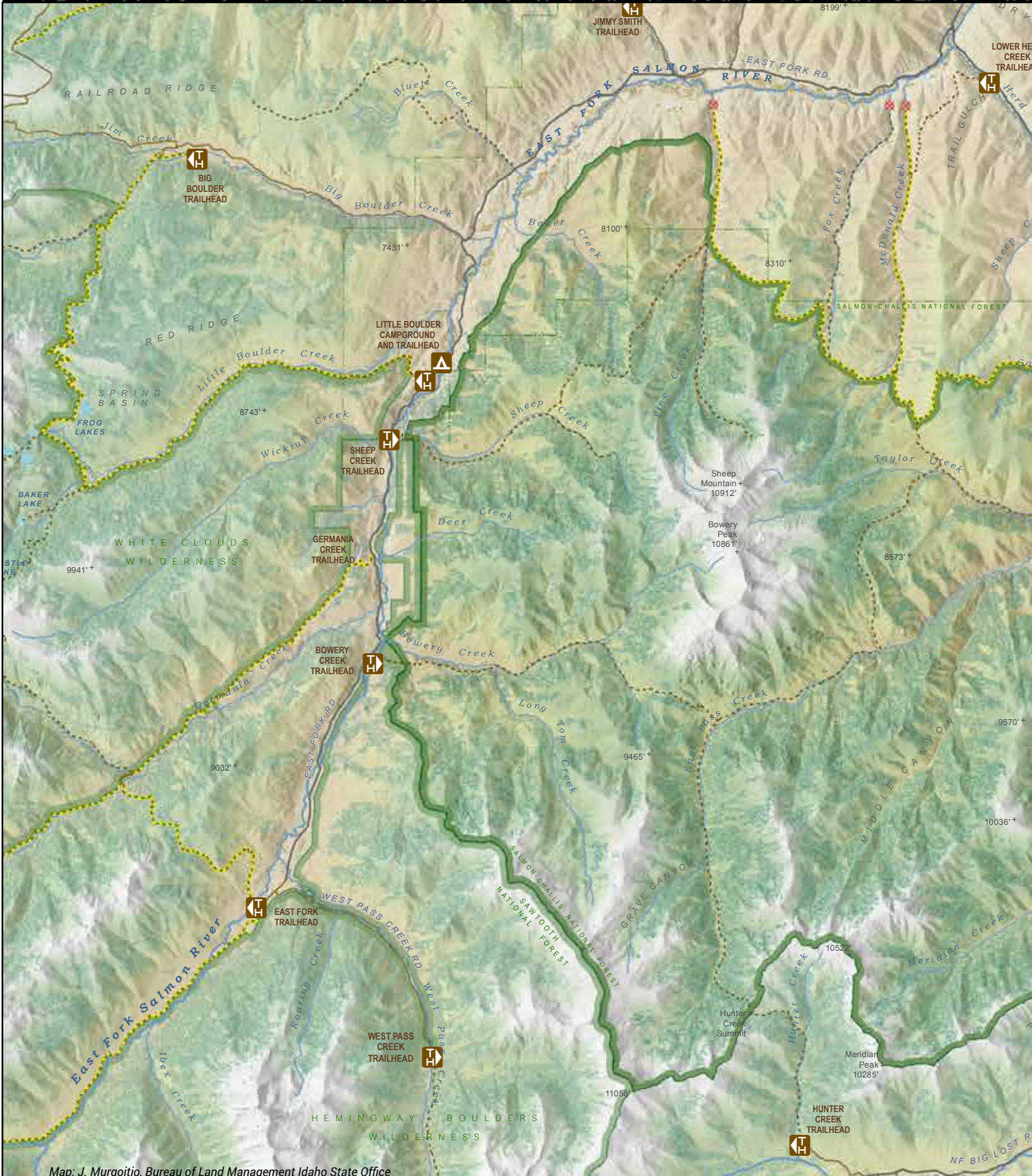




Fall Sunset in the Hemingway-Boulder Wilderness. Photography © Nils Ribi

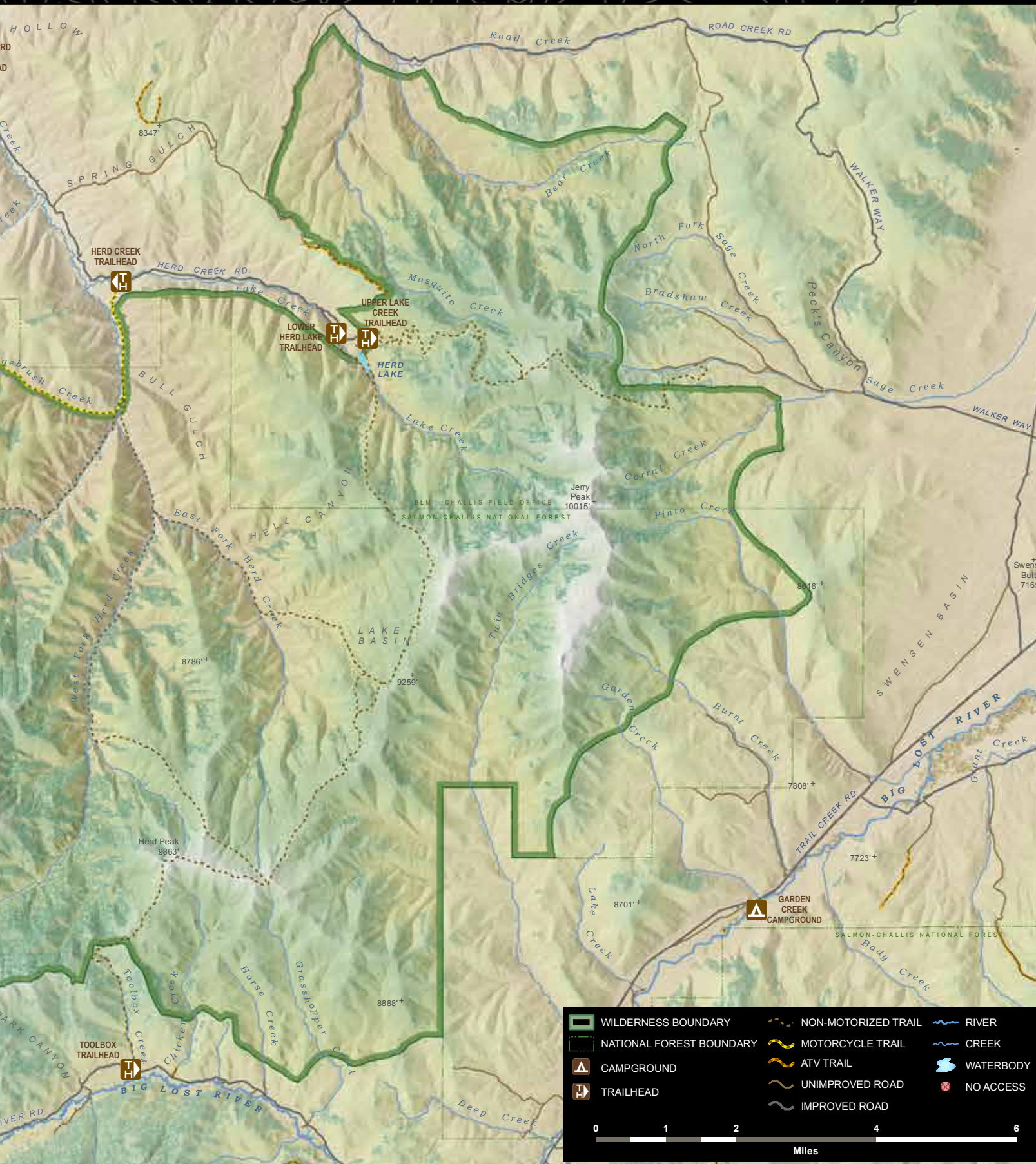


Jim McClure-Jerry Peak Wilderness



Map: J. Murgoitio, Bureau of Land Management Idaho State Office

s, Idaho



A lone tent weathers a passing summer storm on the summit of Jerry Peak in the Jim McClure-Jerry Peak Wilderness. Photography © Matt Leidecker







East Fork of the Salmon River. Photography © Ace Hess

