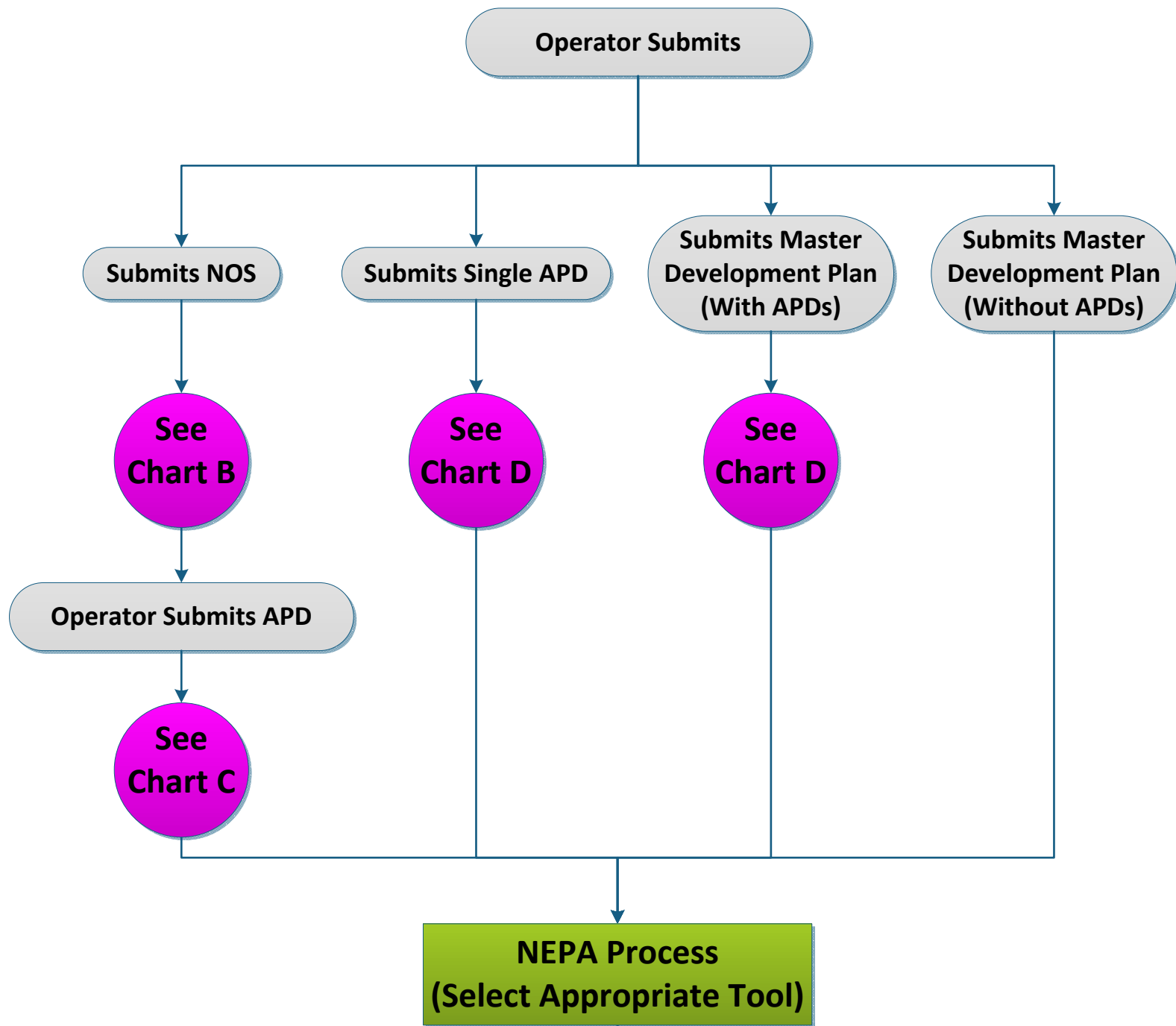
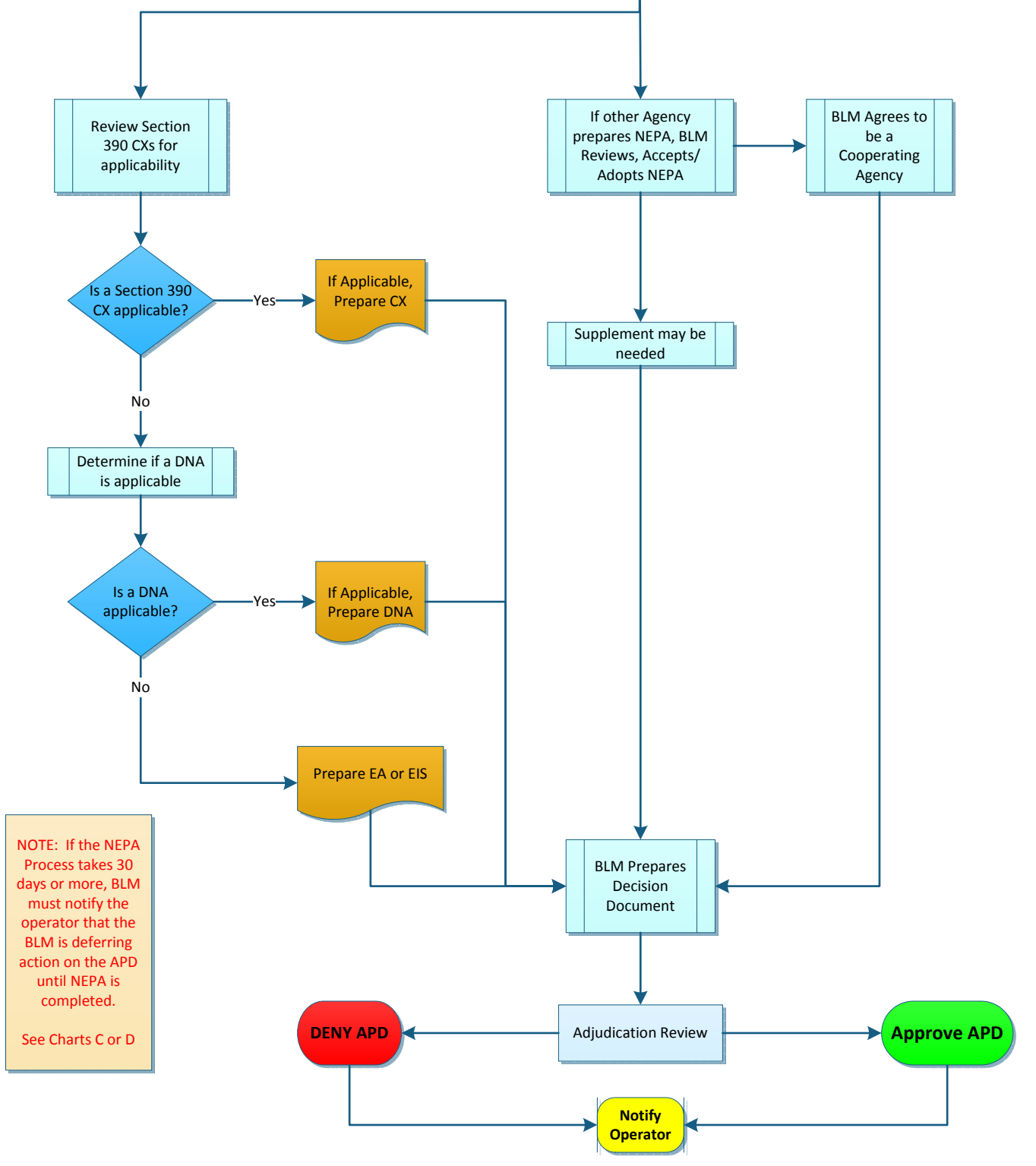


APD Process



NOTE: Whenever "days" is stated within this chart, it means calendar days.

Chart A



NOTE: If the NEPA Process takes 30 days or more, BLM must notify the operator that the BLM is deferring action on the APD until NEPA is completed. See Charts C or D

Legend

- Process (White rectangle)
- Sub-Process (White rectangle with vertical lines)
- Document (White shape with wavy top)
- Data (White trapezoid)
- BLM Letter (White rounded rectangle)
- Start/End (White rounded rectangle)
- Decision Point (White diamond)
- Chart Link Button (White circle)

*If at any step in the flowchart there is a step that is not needed, proceed to the next step.

NOS Process

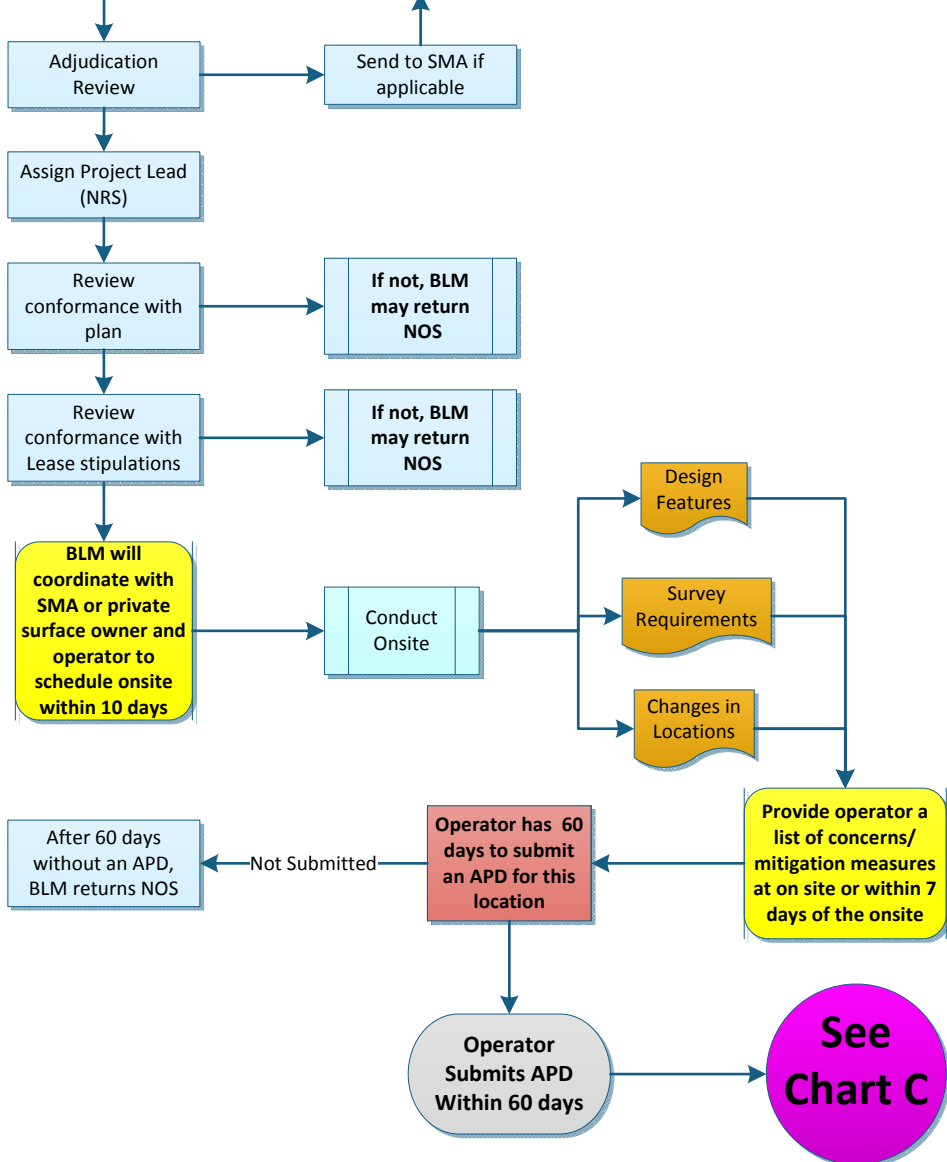
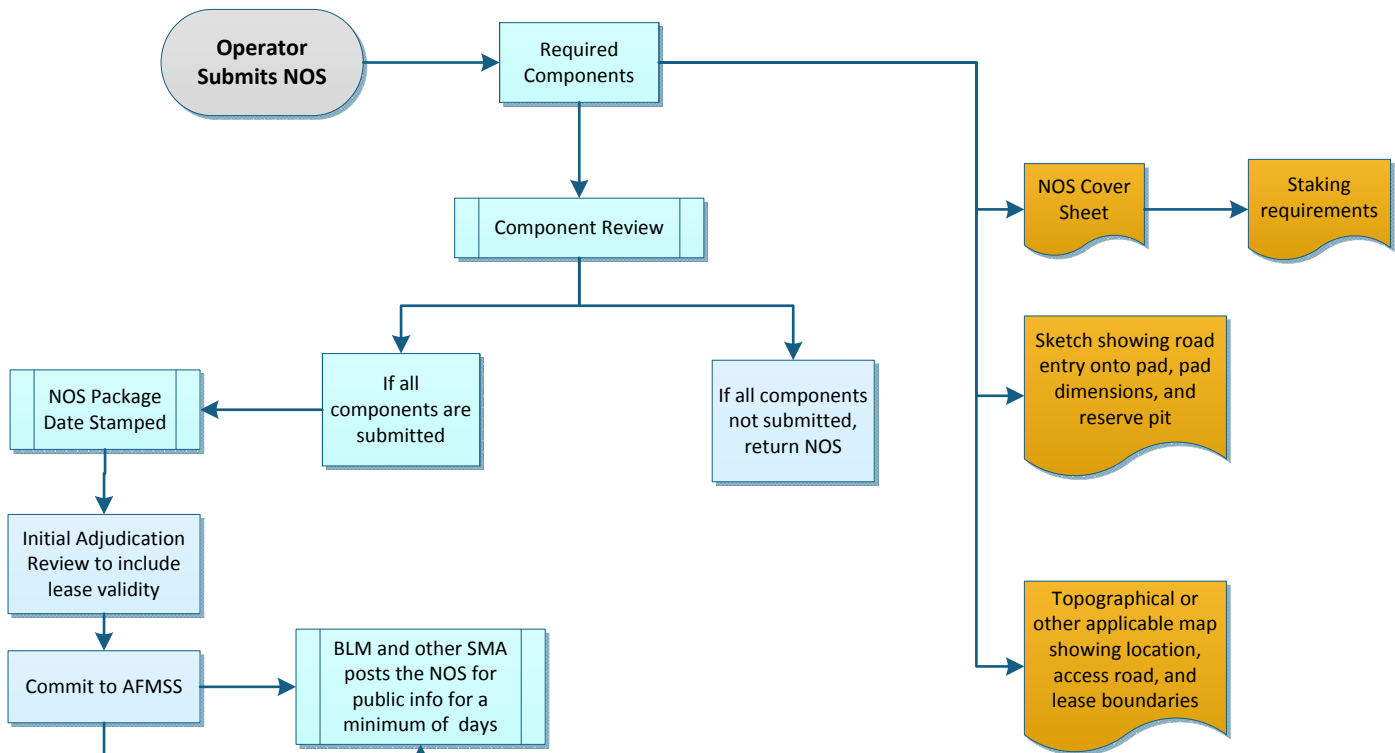
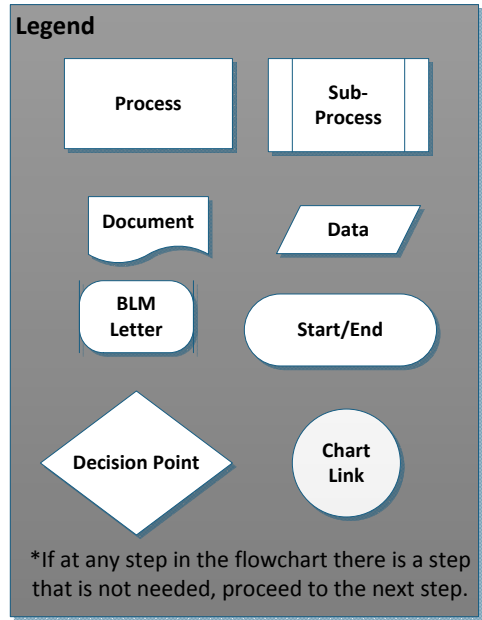


Chart B



APD Process, when NOS previously submitted

NOTE:
Whenever "days" is stated within this chart, it means calendar days.

See Chart A

NEPA Process
*This is an ongoing process throughout the entire APD review.

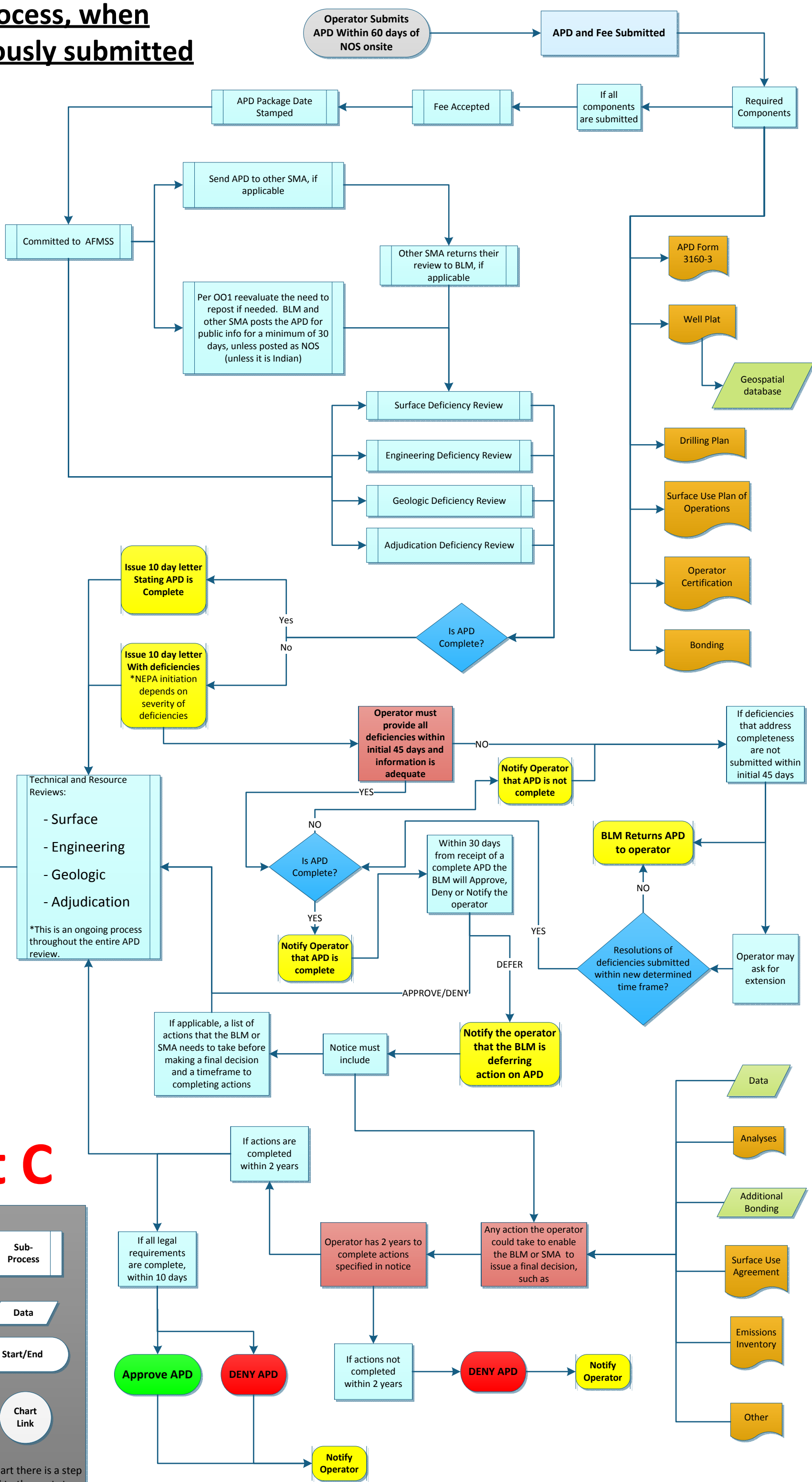


Chart C

Legend

- Process (Blue rounded rectangle)
- Sub-Process (Light blue rounded rectangle)
- Document (White rounded rectangle)
- Data (Green parallelogram)
- BLM Letter (White rounded rectangle)
- Start/End (White rounded rectangle)
- Decision Point (White diamond)
- Chart Link (White circle)

*If at any step in the flowchart there is a step that is not needed, proceed to the next step.

APD Process, When No NOS Previously Submitted

NOTE: Whenever "days" is stated within this chart, it means calendar days.

See Chart A

NEPA Process
*This is an ongoing process throughout the entire APD review.

Technical and Resource Reviews:
- Surface
- Engineering
- Geologic
- Adjudication
*This is an ongoing process throughout the entire APD review.

Chart D

Legend

- Process (White box)
- Sub-Process (Light blue box)
- Document (Light blue document icon)
- Data (Light green data icon)
- BLM Letter (Light blue rounded rectangle)
- Start/End (Light blue rounded rectangle)
- Decision Point (White diamond)
- Chart Link (Light blue circle)

*If at any step in the flowchart there is a step that is not needed, proceed to the next step.

