

NWCO Greater Sage-grouse Plan Implementation CPW's role



Northwest Resource Advisory Council

Craig, CO

August 18, 2016

Bridget Clayton



Kathy Griffin

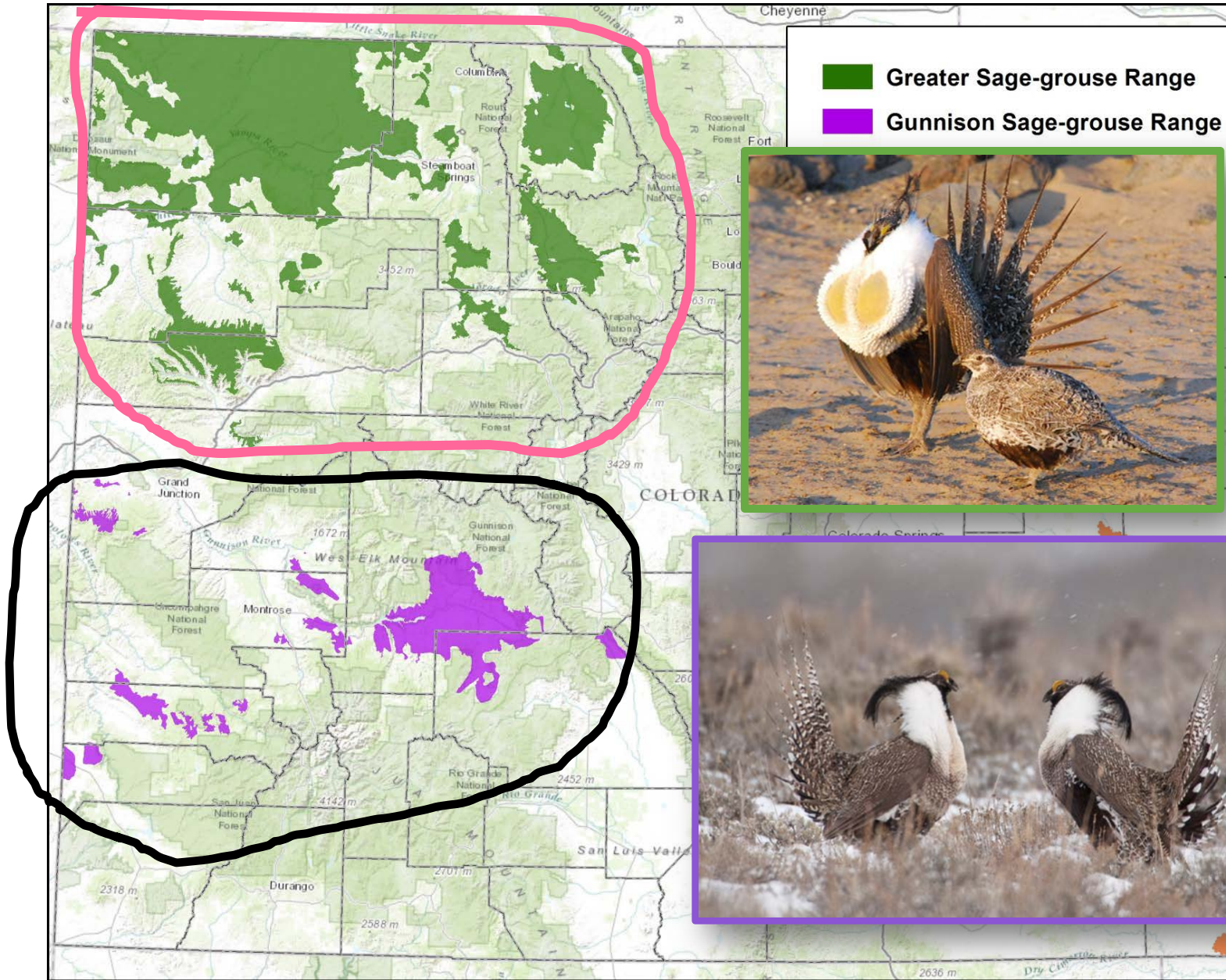


Greater Sage-grouse overview

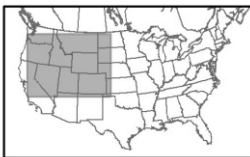
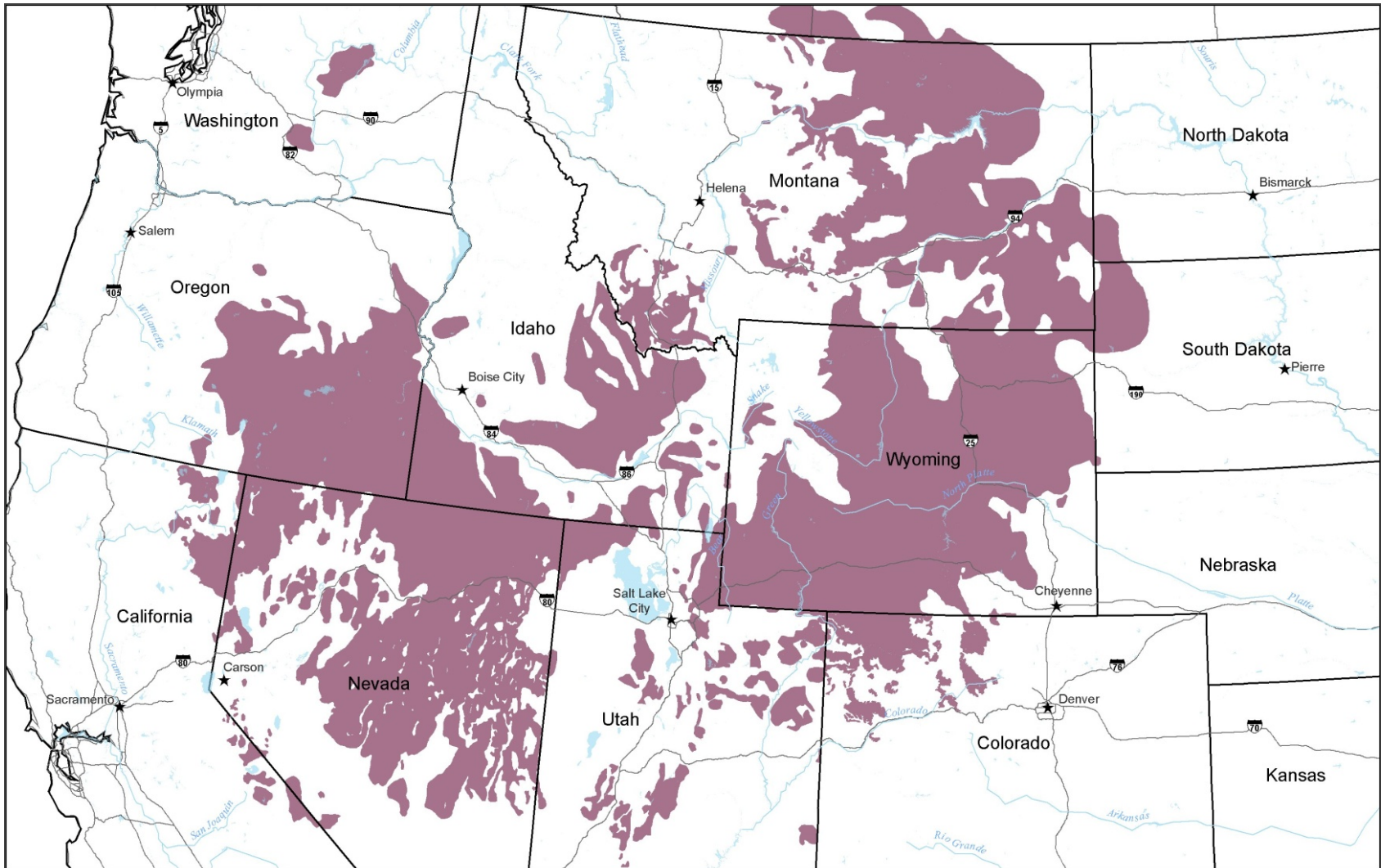
- BLM manages habitat
- CPW manages birds



Sage-Grouse Distribution - CO



GrSG – Rangewide Distribution

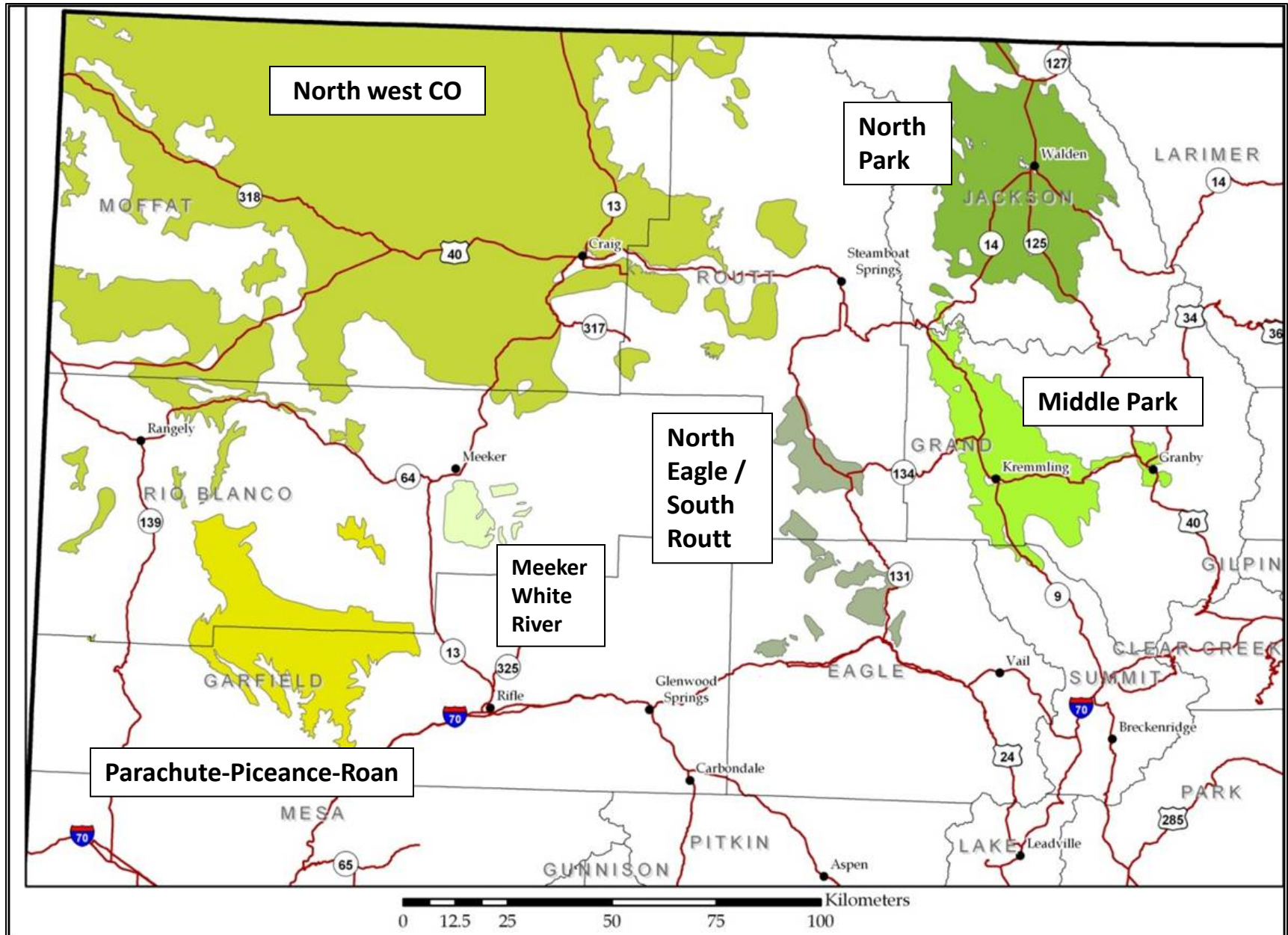


★ Capitals	■ Current Greater Sage Grouse Range Schroeder et al. 2004 and Colorado Overall Range	Ⓝ
— Highways		
— States		
— Hydrography		



GIS Unit

GrSG – Colorado Distribution





GrSG – Timeline

1999-
2005

8
petitions
received

2010

FWS Proposed
Rule –
Warranted but
precluded

**FWS to
reevaluate
in 5 yrs**

2008
Colorado
Conservation
Plan

Sept.
2015 FWS
Proposed
Rule

Not Warranted

NWCO Greater Sage-grouse Plan Implementation CPW's role

- Consultation on plan conformance
- Technical assistance – lek count info
- Adaptive management

Triggers

– Hard

– Soft

Consultation

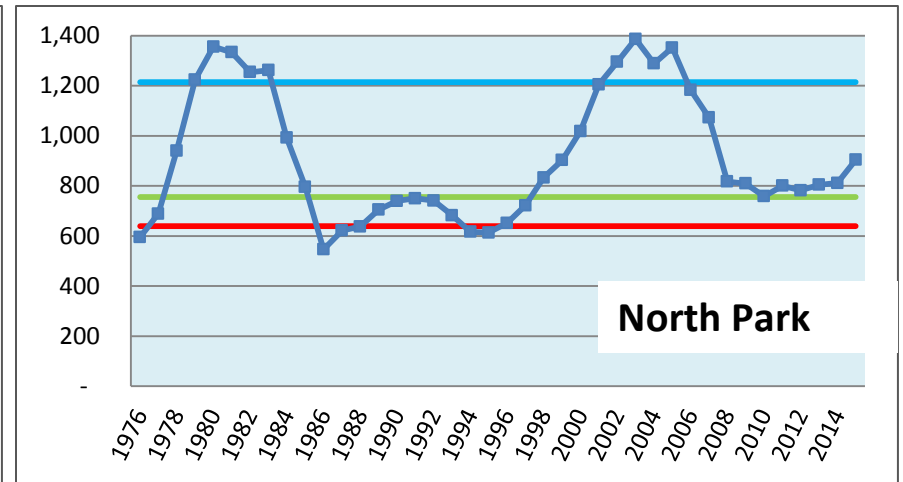
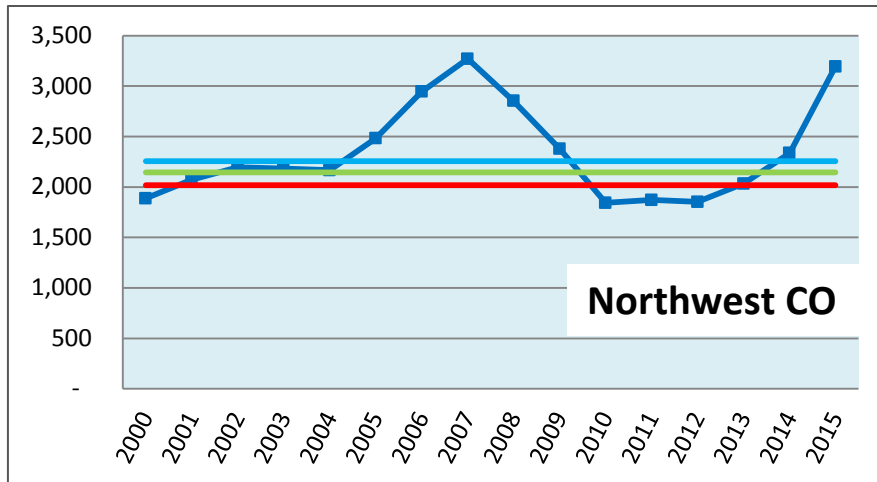
- During planning phase – we were trying to formalize the relationship with CPW to provide as much “certainty” as possible and link to the state plan.
- It is SOP to consult with CPW on TL exceptions, for instance. We added a consultation requirement for a lot of actions:

Management actions – Consultation with CPW

- **MD FIRE-4:** (PHMA) Do not reduce sagebrush canopy cover to less than 15 percent (Connelly et al. 2000; Hagen et al. 2007) in a project area unless a vegetation management objective requires additional reduction in sagebrush cover to meet strategic protection of GRSG PHMA and conserve habitat quality for the species, in consultation with the State of Colorado.
- **MD FIRE-6:** (PHMA) Allow no treatments in known winter range unless the treatments are designed to strategically reduce wildfire risk around or in the winter range and will maintain winter range habitat quality, unless in consultation with the State of Colorado it is deemed necessary to reduce risk to life and property.
- **MD MR-3:** In GHMA, any new leases would include TL stipulations to protect GRSG and its habitat. The following stipulation would apply:
- **GRSG TL-46e:** No activity associated with construction, drilling, or completions within 4 miles from active leks during lekking, nesting, and early brood-rearing (March 1 to July 15). Authorized Officer could grant an exception, modification, or waiver in consultation with the State of Colorado (Appendix G, Stipulations Applicable to Fluid Mineral Leasing and Land Use Authorizations).
- **MD MR-10:** Based on site-specific conditions, prohibit construction, drilling, and completion within PHMA within 4 miles of a lek during lekking, nesting, and early brood-rearing (March 1 to July 15). In consultation with the State of Colorado, this TL may be adjusted based on application of the criteria below.
- Criteria*:
 - Location of proposed lease activities in relation to critical GRSG habitat areas as identified by factors, including, but not limited to, average male lek attendance and/or important seasonal habitat
An evaluation of the potential threats from proposed lease activities that may affect the local population as compared to benefits that could be accomplished through compensatory or off-site mitigation
 - An evaluation of the proposed lease activities, including design features, in relation to the site-specific terrain and habitat features. For example, within 4 miles from a lek, local terrain features such as ridges and ravines may reduce the habitat importance and shield nearby habitat from disruptive factors. This is particularly likely in Colorado MZ 17, which has an atypical GRSG habitat featuring benches with GRSG habitat interspersed with steep ravines
To authorize an activity based on the criteria above, the environmental record of review must show no significant direct disturbance, displacement, or mortality of GRSG.
- **MD MR-11:** Within PHMA, operators would be encouraged to complete Master Development Plans in consultation with the State of Colorado, instead of single-well Applications for Permit to Drill for all but exploratory wells. (Notice to Lessees-54e: see Appendix G, Stipulations Applicable to Fluid Mineral Leasing and Land Use Authorizations.)
- **MD MR-12:** When necessary, conduct effective mitigation in 1) GRSG PHMA or—less preferably—2) GHMA (dependent upon the area-specific ability to increase GRSG populations and in consultation with the State of Colorado).
- **MD MR-13:** Conduct effective compensatory mitigation first within PHMA in the same Colorado MZ where the impact is realized; if not possible, then conduct mitigation within the same population as the impact, or in other Colorado GRSG populations, in consultation with the State of Colorado.

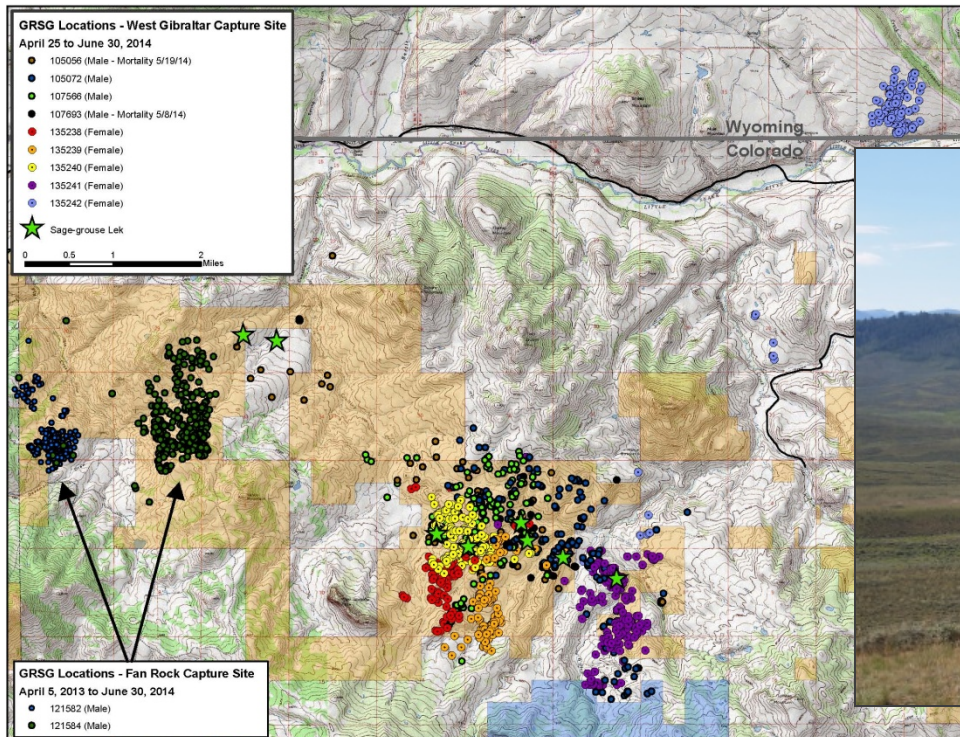
Technical Assistance

- Lek Data (location and annual bird counts)
- Population Trends



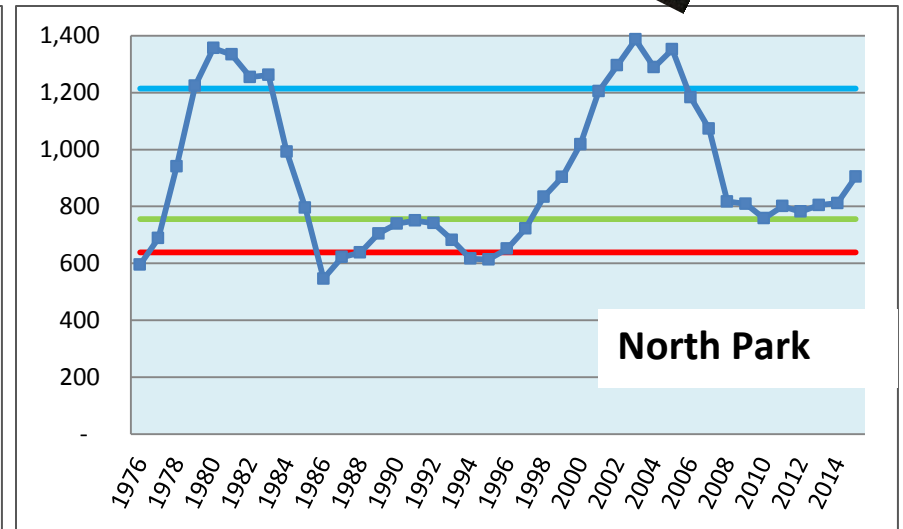
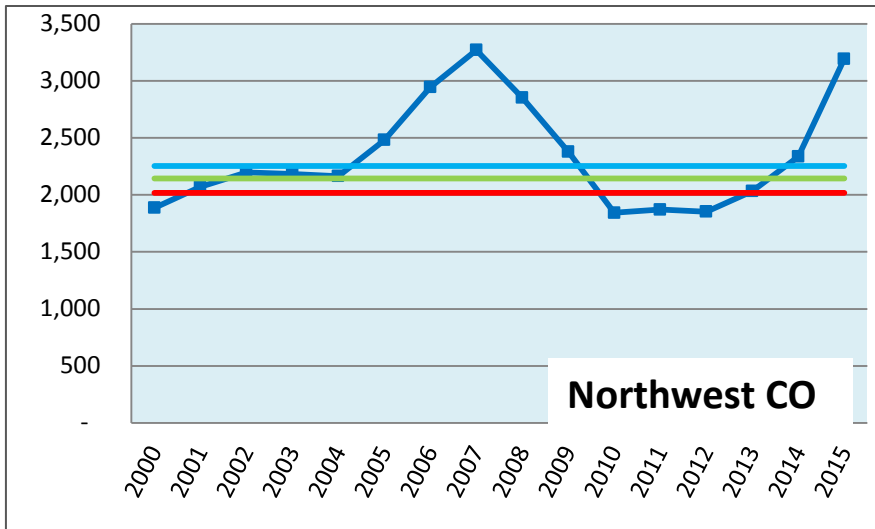
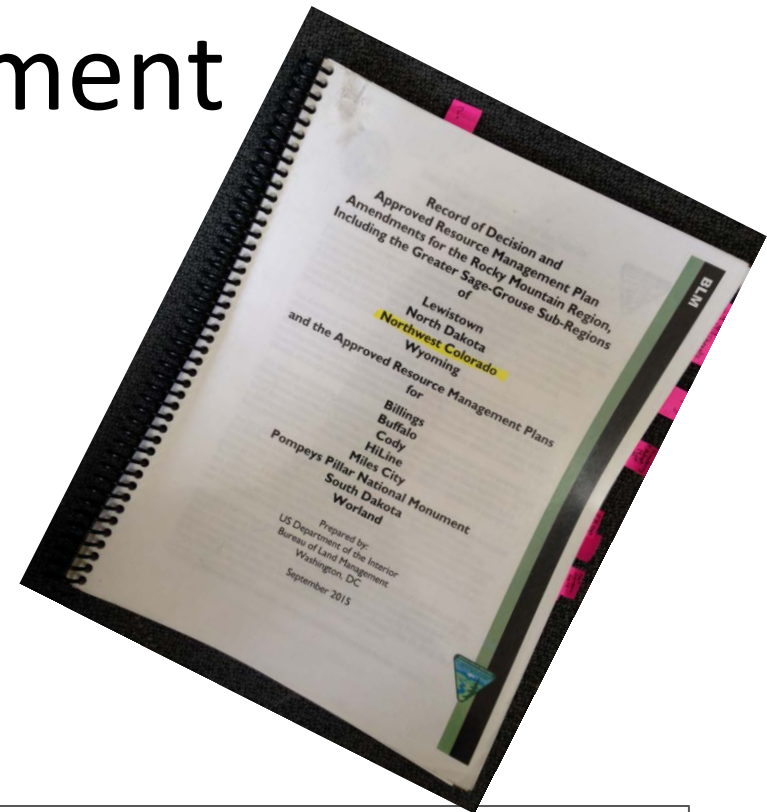
Technical Assistance

- Lek Data (location and annual bird counts)
- Population Trends
- Seasonal Habitat Use (telemetry and research)



Adaptive Management

- Triggers
- Hard and Soft



Adaptive Management Technical Implementation Team

- Meets annually
- Collaborative between BLM and CPW technical experts
- Adaptive management
 - Triggers

Adaptive Management Technical Implementation Team

- CPW presents State of the bird (population trends, habitat use, research)
- Current conditions (LHA/AIM, Fires, Habitat treatments & restoration, conservation Easements)
- Changes to landscape/LUP conformance
 - Project proposed/authorized/outcome (BLM/CPW)
 - Disturbance inventory
 - Restoration and Mitigation (BLM, CPW, NRCS, others)

Adaptive Management Technical Implementation Team

- Assessment of Overall Populations
 - Hard triggers and Soft triggers
 - Concerns/limitations (either habitat or bird)
 - Add projects or reprioritize 5 year plan

Example –
Concern/limitation (soft
trigger)

Wet Meadow Restoration

Enhance wet meadows,
springs, seeps, and riparian
areas.



Adaptive Management Technical Implementation Team

- Assessment of Overall Populations
 - Hard triggers and Soft triggers
 - Concerns/limitations (either habitat or bird)
 - Add projects or reprioritize 5 year plan
- Future / Action Items
 - Program of work (BLM, CPW, NRCS/SGL, others)
 - BLM/CPW/NRCS prepare action plans for upcoming year
 - Identify necessary follow-up meeting/actions

Adaptive Management Technical Implementation Team

- Bring to counties and Local Working Groups
- Get input
- Explore opportunities



Discussion/Questions?

2013-05-27 6:40:03 AM

M 1/1

38°F



HC600 HYPERFIRE

