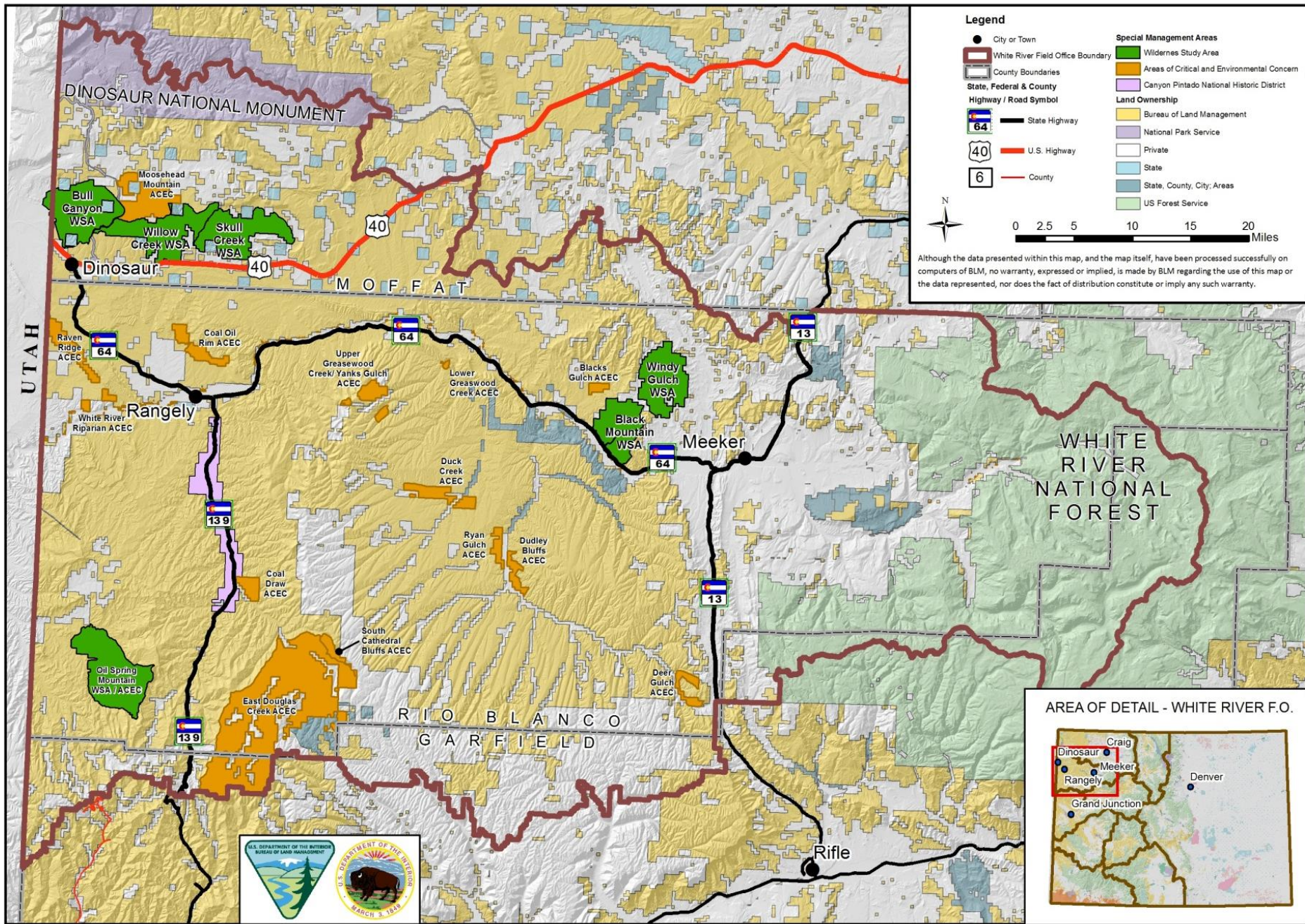


BLM White River Field Office Travel and Transportation Management



**Planning Update
May 2016**



BLM Travel Management Planning

The BLM travel and transportation management includes two levels of planning:

❖ **Land Use Planning
(RMP Amendment)**



Areas

❖ **Implementation Planning
(Travel Management Plans)**



Route-by-Route

Strategy for Travel Management Planning in the WRFO

Inventory (map) travel routes

Started in 2014 and complete in 2016

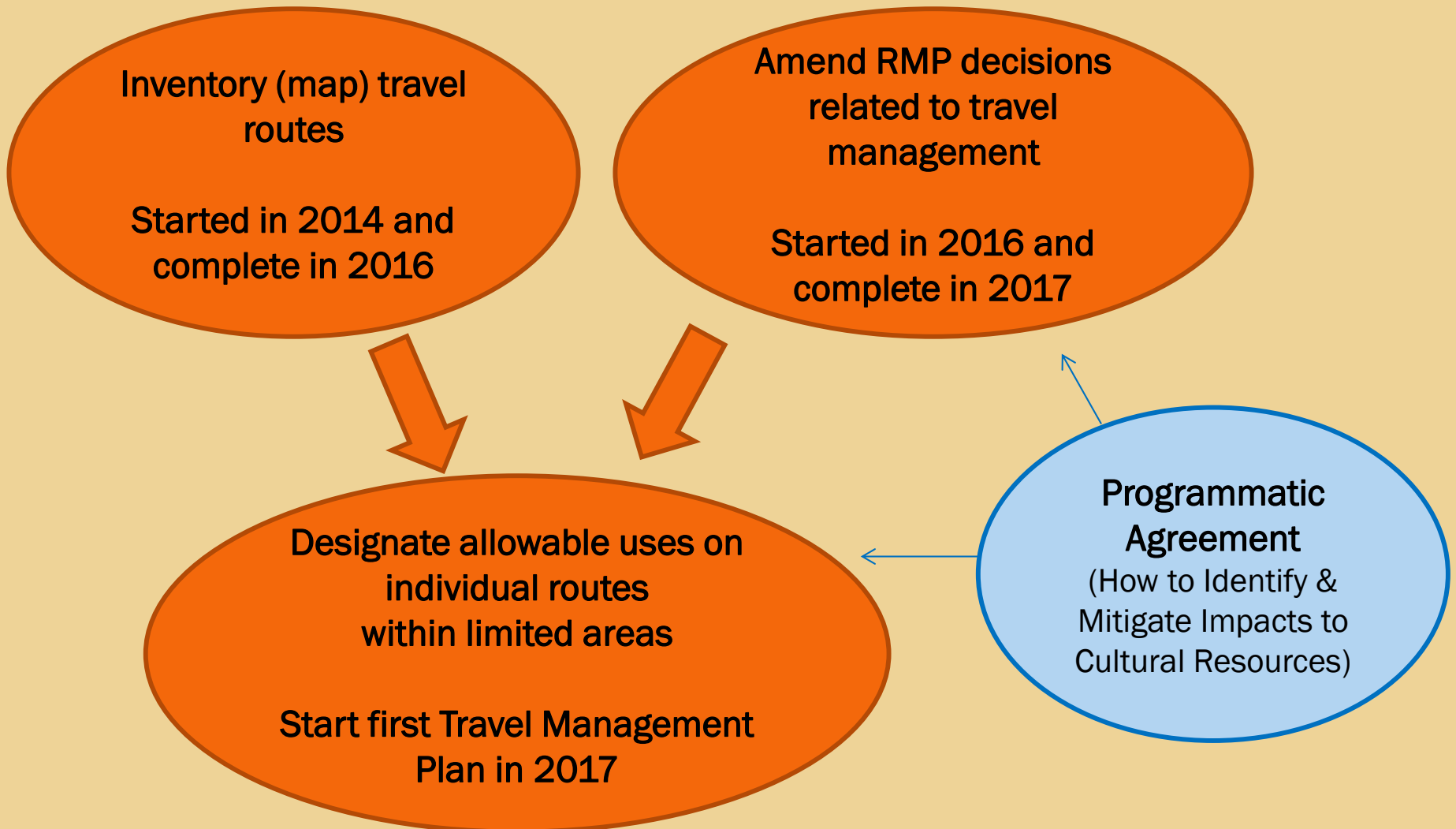
Amend RMP decisions related to travel management

Started in 2016 and complete in 2017

Designate allowable uses on individual routes within limited areas

Start first Travel Management Plan in 2017

Strategy for Addressing Cultural Resources During Travel Management Planning



Public Involvement Opportunities in 2016

- ❖ Travel Route Inventory
 - ❖ Scoping of the 2015 Inventory Data in May 2016
 - ❖ Scoping of the 2016 Inventory Data in October 2016

- ❖ Programmatic Agreement (Cultural Resources)
 - ❖ Scoping meeting for Consulting Parties in April 2016

- ❖ Travel Management RMP Amendment
 - ❖ Cooperating Agency review of preliminary alternatives May 2016
 - ❖ Public review of preliminary alternatives August 2016
 - ❖ Includes meetings with NW RAC Subgroup
 - ❖ Includes public field tours of proposed open areas

Northwest RAC Subgroup

- ❖ Focus is evaluating if BLM has developed an adequate range of alternatives in the Travel Management RMPA
- ❖ Public review of preliminary alternatives 8/15-9/19
 - ❖ BLM presents overview of alternatives at RAC meeting (8/18)
 - ❖ Subgroup meeting at start of public review (overview of alternatives)
 - ❖ Subgroup meeting at end of public review (feedback on alternatives)
 - ❖ Subgroup recommendations to RAC due 9/19
 - ❖ RAC recommendations to BLM due 9/30
- ❖ Suggested process
 - ❖ RAC Liaison sends Subgroup recommendations to RAC Chairperson
 - ❖ RAC Liaison sends the RAC recommendations to BLM
 - ❖ Two weeks to review Subgroup's recommendations (via email)

Northwest RAC Subgroup

User Group/Interest	Cat	Name	Agency / Group	Town
Livestock Grazing Permittee	1	Jerry Oldland	N/A	Rifle
Oil & Gas	1	Annette Carrigues	Williams	Parachute
Motorized (OHV)	1	Alvin Jones	Wagon Wheel (OHV) Club	Meeker
Motorized (OHV)	1	Brad Casto	N/A	Rangely
Motorized (OHV)	1	David Bray	Yampa Valley Trail Riders	Craig
Special Recreation Permit Holder (outfitter)	1	Monty Elder	Rim Rock Outfitters	Rangely
Wilderness	2	Soren Jespersen	Wilderness Society	Craig
Sportsmen (hunters/ Anglers)	2	Nick Payne	Theodore Roosevelt Conservation Partnership	Denver

Northwest RAC Subgroup

User Group/Interest	Cat	Name	Agency / Group	Town
Sportsmen (Anglers)	2	Aaron Kindle	Trout Unlimited	Denver
Environment / Wildlife	2	Sasha Nelson	Conservation Colorado	Craig
Non-Motorized (Hiker/Biker)	2	Roy Wedding	N/A	Meeker
Non-Motorized (Hiker/Biker)	2	Don Peach	N/A	Rangely
Equestrian	2	Diane Mobley	White River Riders Saddle Club	Meeker

Category 1 members represent commercial interests or users such as livestock grazing, timber, mining, oil and gas, realty and rights-of-ways, off-highway vehicle groups, and guides and outfitters.

Category 2 members represent environmental organizations, archaeology/historical interests, wildlife organizations, wild horse and burros, and dispersed/general recreation.

Category 3 members represent state or other governmental agencies, Tribes, academic institutions, and the public-at-large.