

# Roan Plateau SEIS/RMPA

## NW RAC UPDATE

February 19, 2015



## 1) Settlement Review

Settlement Reached 11/19/2014. Available at:

<http://www.doi.gov/news/upload/Roan-Settlement-Agreement-SIGNED.pdf>

### Key Background (Whereas clauses):

- SEIS/RMPA will still provide management direction for the Roan Plateau Planning Area.
- The State of Colorado will be required to reimburse the United States for its percentage of the bonus payments and annual rental payments attributable to the canceled leases.

### Key Settlement Provisions

- BLM will cancel 17 of 19 leases atop the Plateau, and refund associated bonus payments and annual rent payments to Bill Barrett Corp (BBC).
- BLM will analyze a “Settlement Alternative” in the SEIS/RMPA.
- BLM will address air quality, sage grouse, wilderness characteristics, and new information in the SEIS.
- BLM will make best effort to complete SEIS and ROD within 24 months.
- If BLM’s ROD adopts the Settlement Alternative, Plaintiffs and Defendant-Intervenors will not protest/petition/appeal/challenge the ROD or subsequent lease development (or fund other parties to do so) atop the plateau.
- BLM may adopt the plan of its choice.





## 1) Settlement Review

### **“Settlement Alternative’s” Key Provisions:**

- Closes area of cancelled leases to new leasing for the life of the plan.
- Makes area of 2 “BBC Retained Leases” atop Plateau open to leasing and development subject to stipulations/conditions consistent with leases as issued.
- Adds a new stipulation with development restrictions and planning requirements to Retained Leases (“Exhibit 2”).
- Makes area of “Base Leases” below Plateau open to leasing and development subject to stipulations/conditions consistent with leases as issued.
- Adds a new stipulation with notification requirements to Base Leases (“Exhibit 3”).

### **Exhibit 2 - Retained Leases**

- No more than 7 well pads, with locations suggested, and use of fee land for central facilities.
- No non-emergency access via Cow Creek or Rim Roads.
- “Master Development Plan” (MDP) required, with CPW/BLM consultation.
- Includes detailed Conditions of Approval.

### **Exhibit 3 - Base Leases**

- MDP required, with CPW/BLM consultation.





## 2) SEIS/RMPA Status

### Public Scoping Summary Report and Assessment of New Information (ANI) Complete

- Both are available at:  
[http://www.blm.gov/co/st/en/BLM\\_Programs/land\\_use\\_planning/rmp/roan\\_plateau.html](http://www.blm.gov/co/st/en/BLM_Programs/land_use_planning/rmp/roan_plateau.html)
- Along with the Judicial Order and Settlement, these define the limited scope of this Supplemental EIS

### Alternatives Developed and Under BLM Review

- The alternatives are discussed later in this presentation

### Five Cooperating Agency Meetings to Date

- Three general meetings, including discussion of alternatives, schedule, data sets, significant new information, and analysis approaches
- Two meetings specific to socioeconomic, resulting in use of cooperator data and refined analysis approaches

### Upcoming Dates Preliminary Schedule

- BLM review Affected Environment: April
- BLM review Environmental Consequences: April
- CA Review Key Resource Sections: ~May
- BLM review full PDEIS: June/July
- NOA and start of 90 day comment period: late August





## 4) Alternatives

***Alternatives reflect the supplemental nature of the plan. They include alternatives from the original plan, judicial decision, and recent settlement.***

### **Alternative I – No Action:**

- The No Action Alternative from the Roan RMPA/EIS (2007).
- No oil and gas leasing and development on top of Plateau.
- Maintains present uses by continuing present management direction and activities, but does not incorporate management implemented under remanded FEIS/ROD.

### **Alternative II – FEIS Proposed Plan:**

- Based on the Proposed Plan from the Roan RMPA/EIS (2007).
- Areas available for oil and gas leasing available above and below the rim.
- Oil and gas resources would be developed in a systematic, clustered, and staged manner above the rim.
- GSG management from NW Colorado EIS- Alternative E

### **Alternative III – Community Alternative:**

- Based on the Community Alternative, per Rock the Earth (2005), with other input from SEIS scoping comments. Other management actions from FEIS Proposed Plan (2007).
- Areas available for oil and gas leasing above and below the rim, but an NSO restriction for all BLM surface above the rim would prohibit development, except (as feasible) from private land.
- GSG management from NW Colorado EIS- Alternative B

### **Alternative IV – Settlement Alternative:**

- Incorporates terms of the the Settlement Agreement (2014). All other management actions from FEIS Proposed Plan (2007).
- Areas of Base and Retained leases would be available for oil and gas leasing, above and below the rim.
- GSG management from NW Colorado EIS- Alternative E



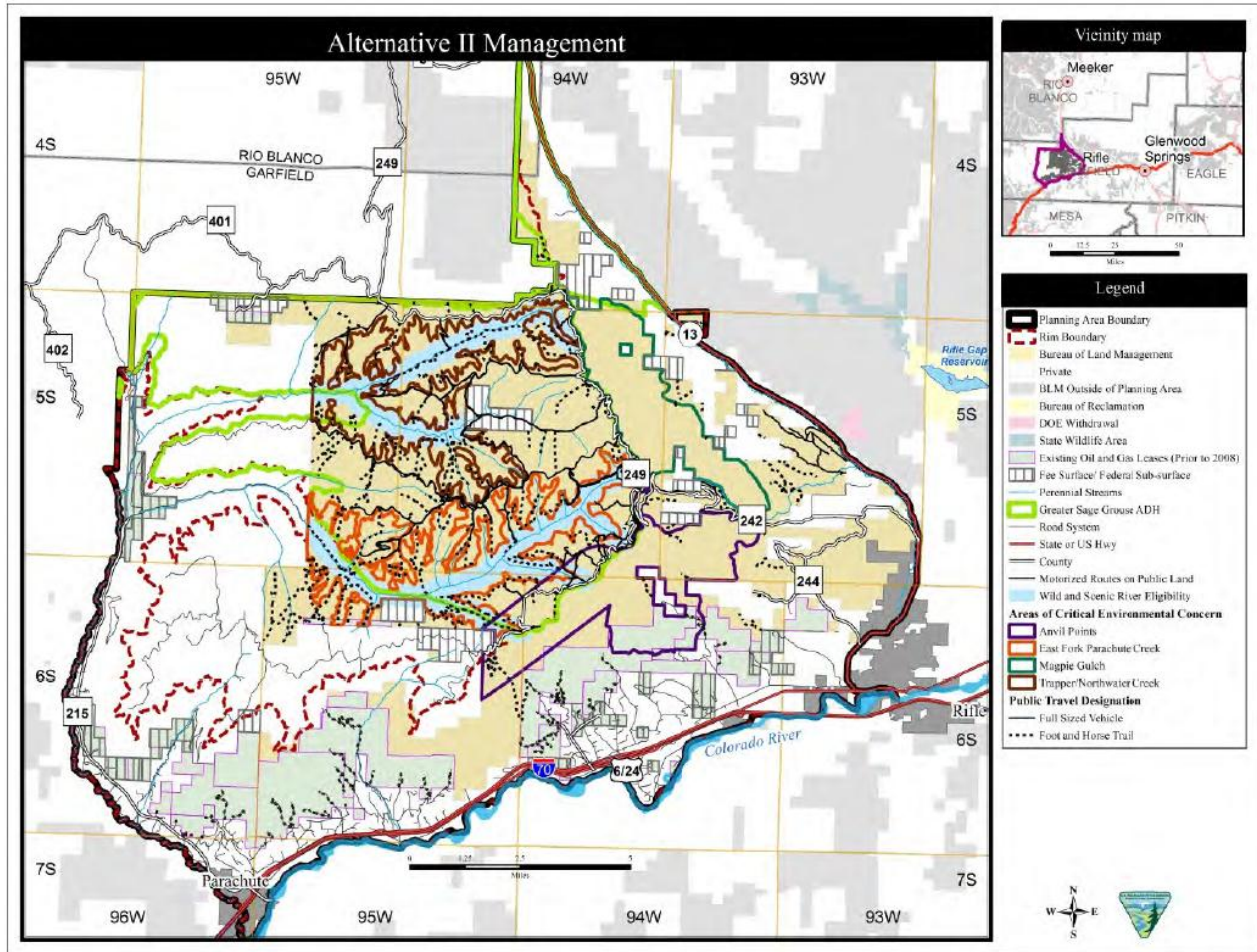
## 4) Alternatives

<i>ALTERNATIVE I NO ACTION</i>	<i>ALTERNATIVE II FEIS PROPOSED PLAN</i>	<i>ALTERNATIVE III COMMUNITY ALTERNATIVE</i>	<i>ALTERNATIVE IV SETTLEMENT ALTERNATIVE</i>
BLM surface open to oil and gas leasing = 24,980 acres	<b>BLM surface open to oil and gas leasing = 66,780 acres</b>	<b>BLM surface open to oil and gas leasing = 66,780 acres</b>	<b>Area open to oil and gas leasing = 32,000 acres</b>
• NSOs – 14,120 acres	• <b>NGD/NSOs – 37,900 acres</b>	• <b>NGD/NSOs – 64,660 acres</b>	• NGD/NSOs – 21,720 acres
BLM surface closed to oil and gas leasing = 41,800 acres	BLM surface closed to oil and gas leasing = 0 acres	BLM surface closed to oil and gas leasing = 0 acres	<b>BLM surface closed to oil and gas leasing = 34,780 acres</b>
Designate no ACECs	<b>Designate four ACECs (East Fork Parachute Creek, Trapper/Northwater Creek, Magpie Gulch, and Anvil Points)</b>		
Designate no WMAs	Designate the Parachute Creek Watershed Management Area (WMA)		
WSRs eligibility findings not applied.	Eligible streams unsuitable for management as Wild and Scenic Rivers	<b>Eligible streams suitable for management as Wild and Scenic Rivers</b>	Eligible streams unsuitable for management as Wild and Scenic Rivers
No special management for Lands with Wilderness Character	No areas would be managed specifically to maintain wilderness character.	<b>Manage the East Fork Unit, Southeast Cliff Unit, and Northeast Cliff Unit to protect their wilderness character.</b>	No areas would be managed specifically to maintain wilderness character.



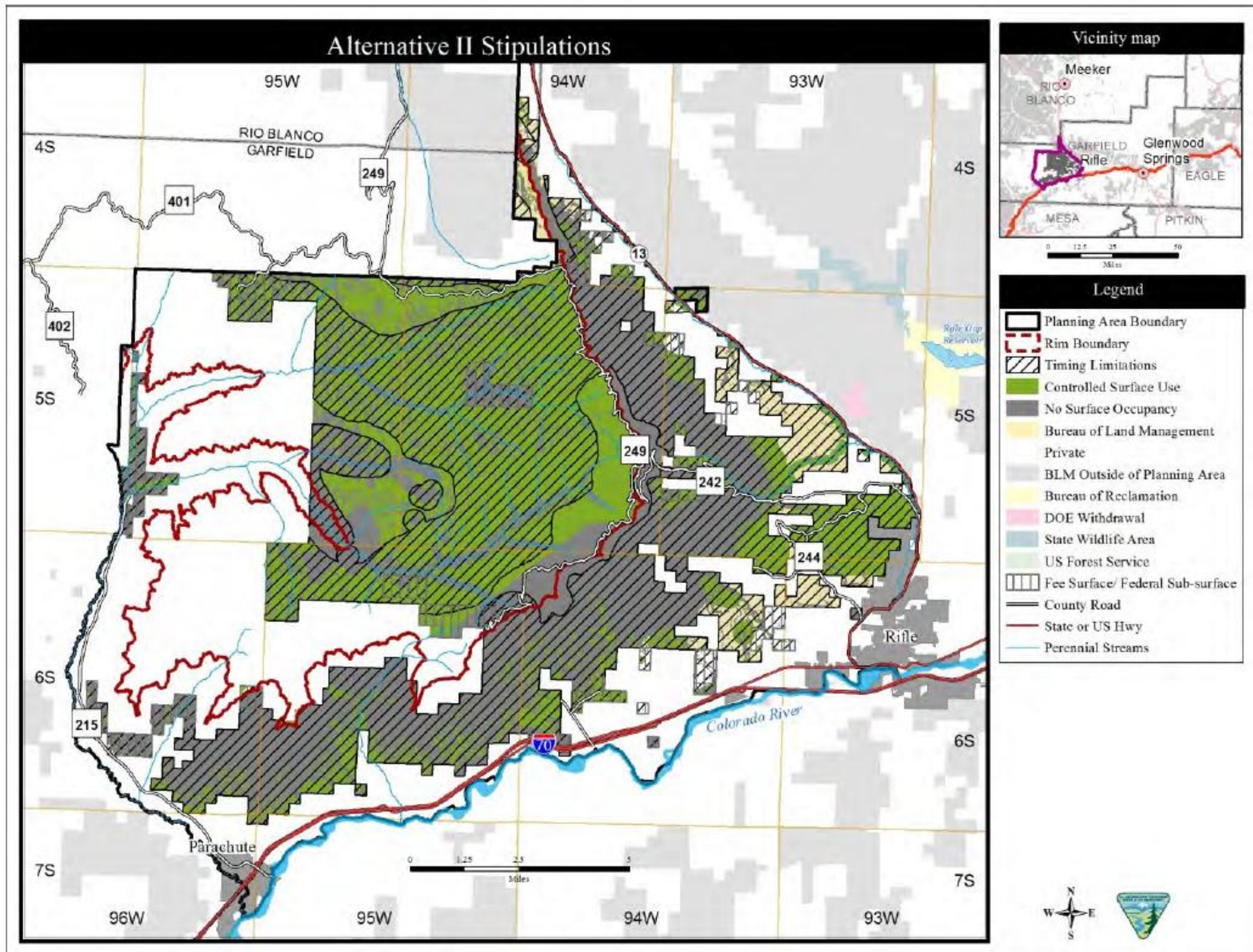


## 2) Alternatives – Alternative II



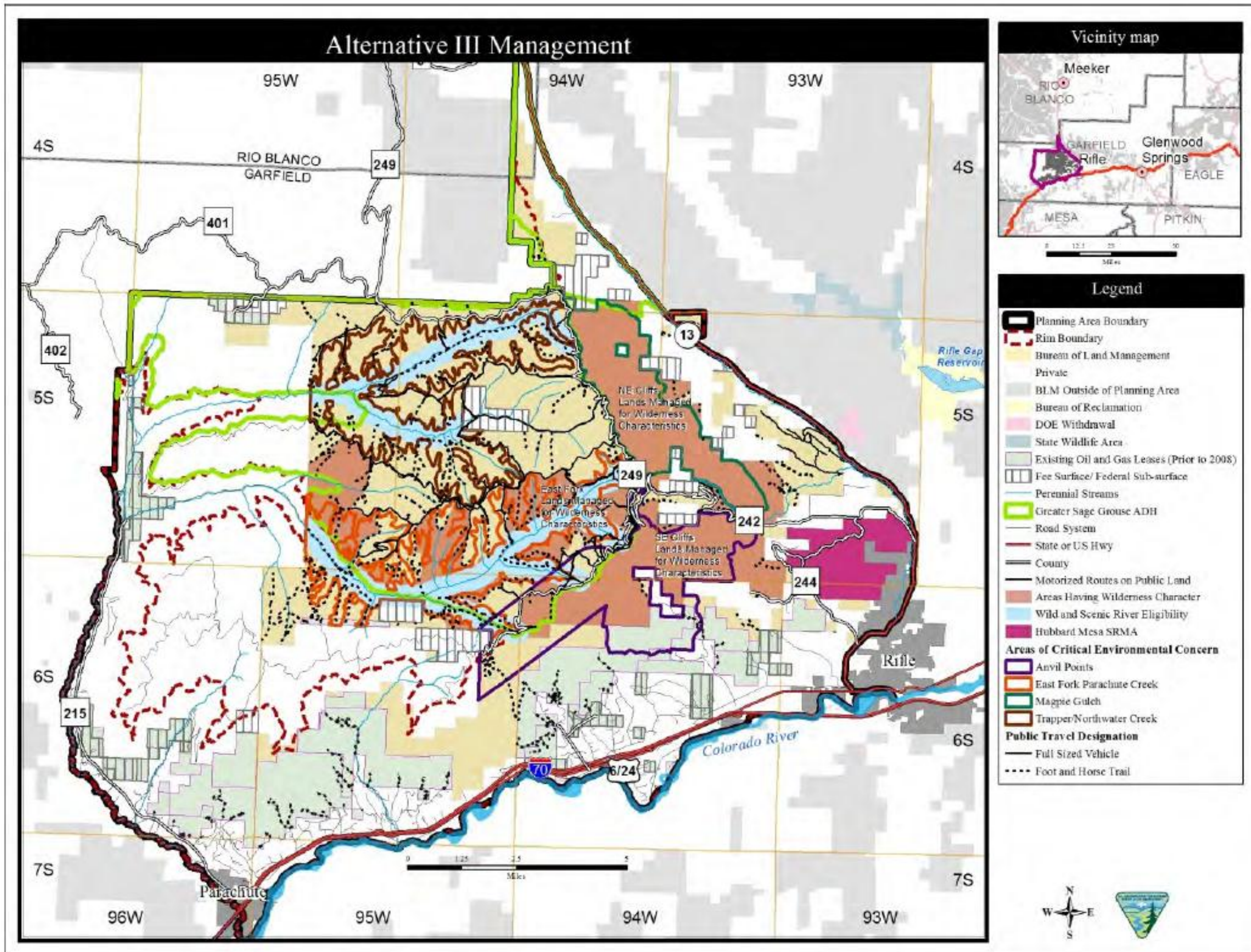


## 2) Alternatives – Alternative II



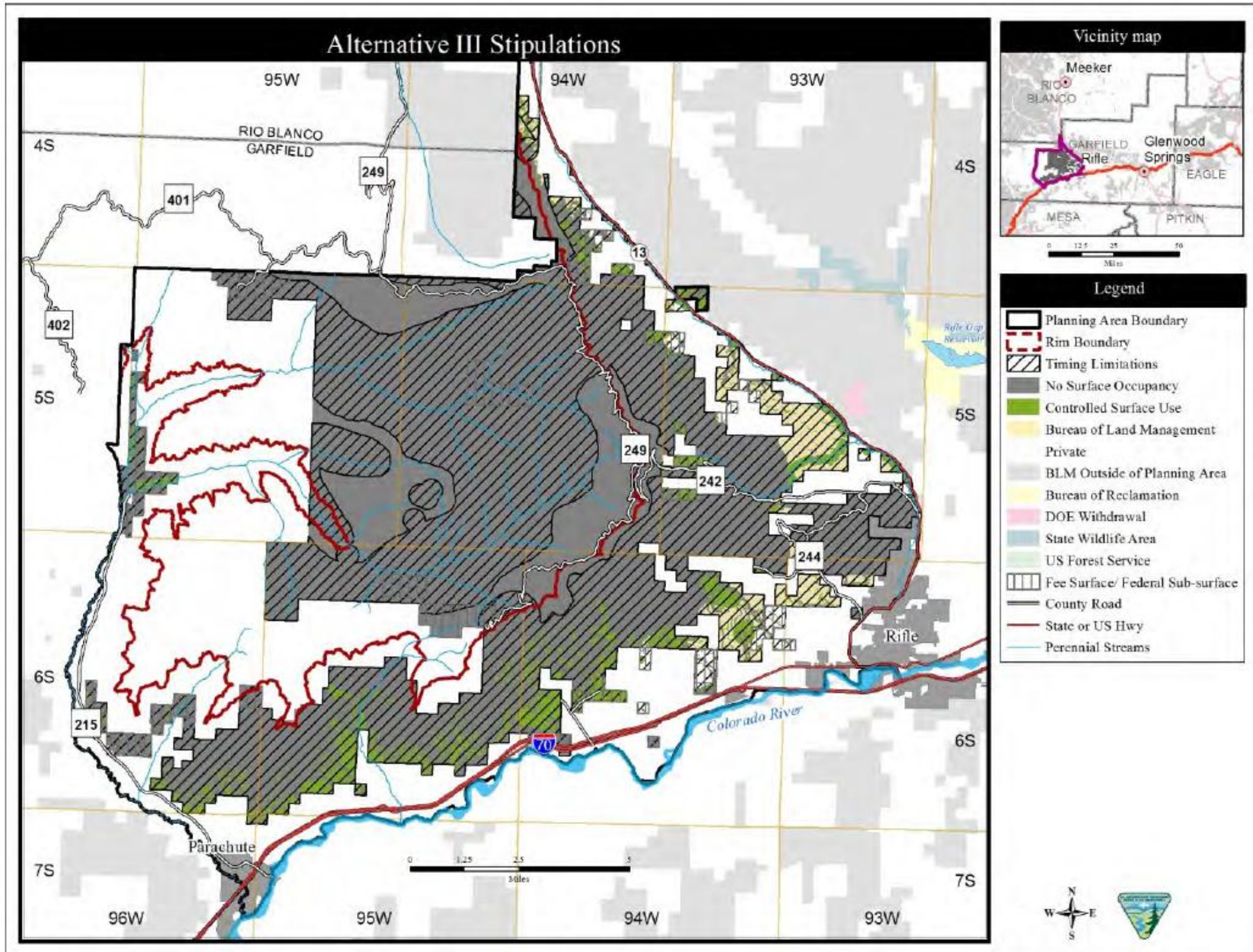


## 2) Alternatives – Alternative III



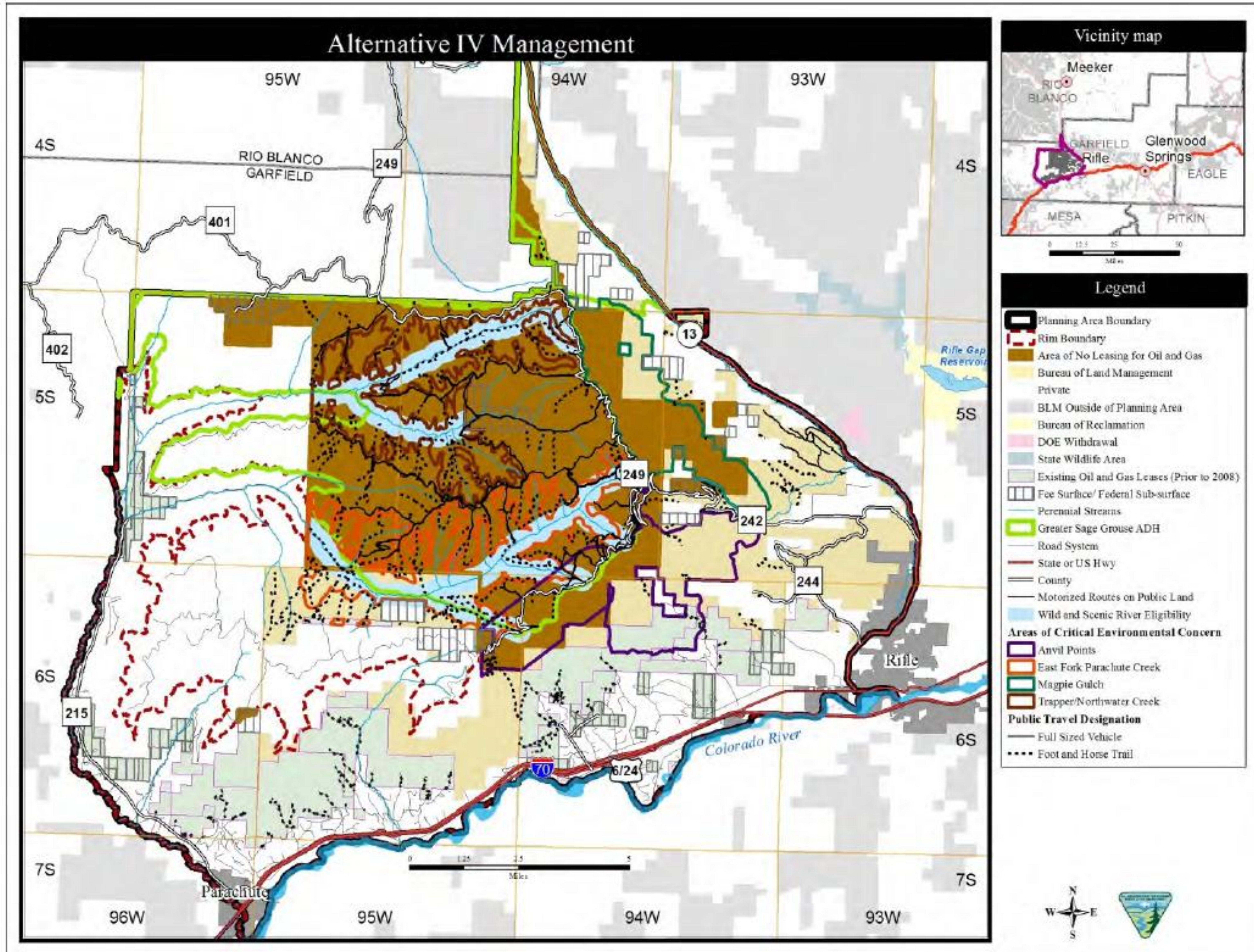


## 2) Alternatives – Alternative III





## 2) Alternatives – Alternative IV





# 2) Alternatives – Alternative IV

