



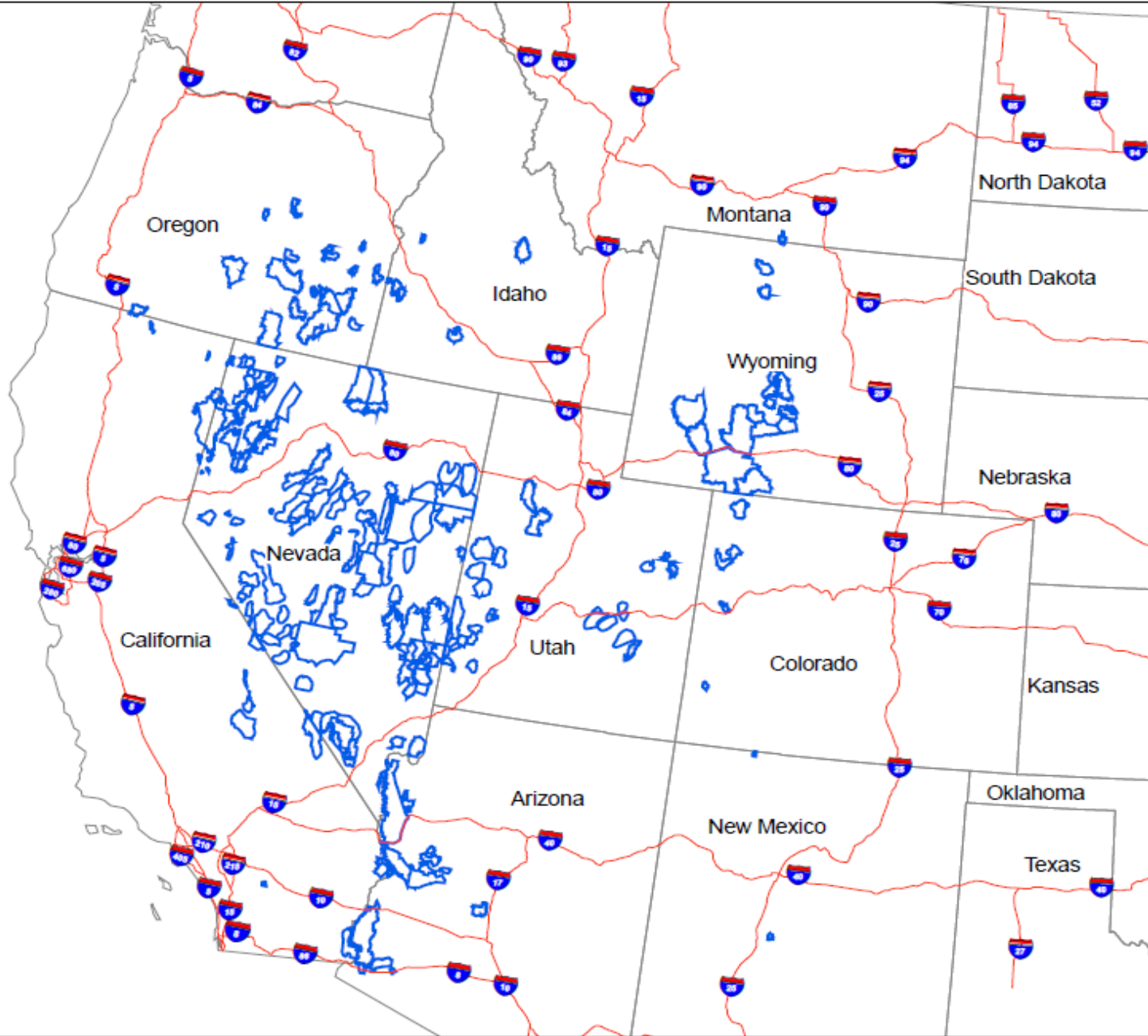
Management Authority – Wild Horse and Burros Act (1971 as amended)

- Only applies to public lands administered by BLM & USFS
- Manage where found in 1971 (Can't relocate to where they didn't exist in 1971)
- Maintain thriving natural ecological balance in combination with other uses
- Immediately remove excess animals and determine if AML will be achieved by removal, destruction or other means – sterilization
- Make excess animals available for adoption
- Destroy those for which no adoption demand exists
- Sell w/o limitation if offered unsuccessfully for adoption x 3 and those ≥ 10 years
- Limitations in Appropriations Acts on destruction, slaughter

Terms

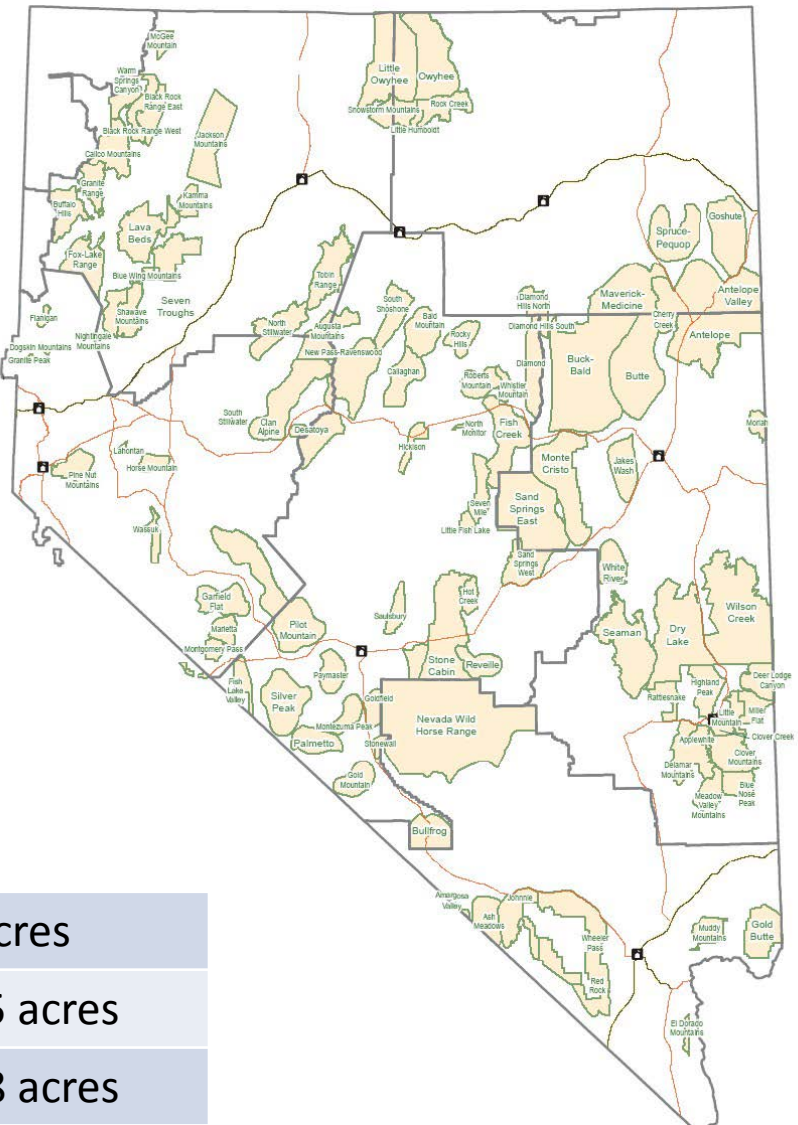
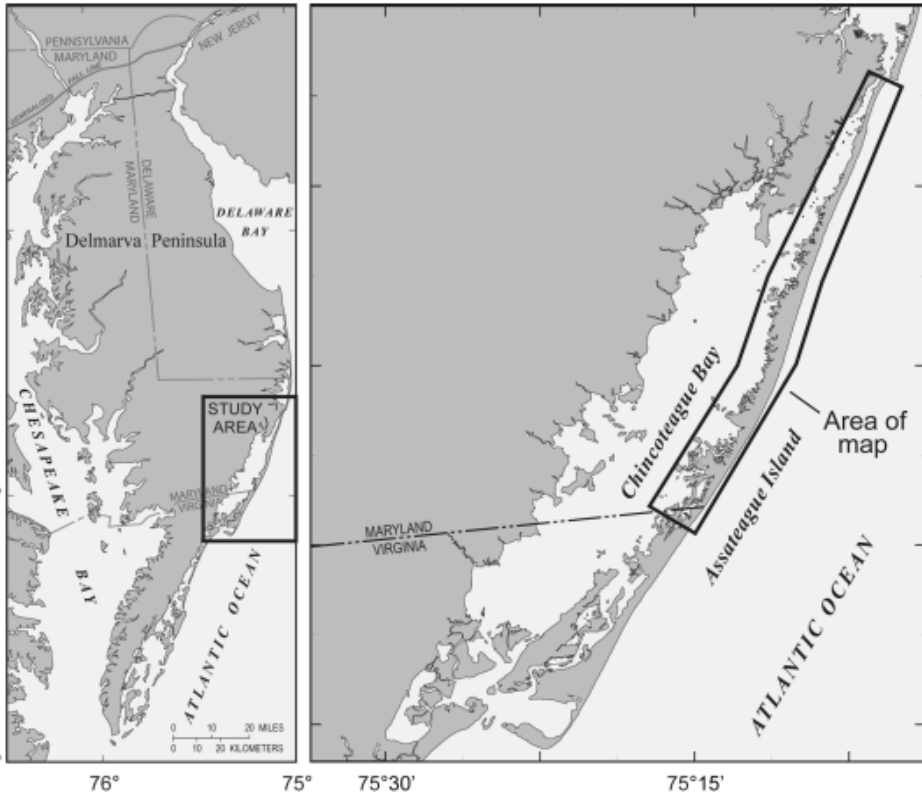
Wild Horses and Burros	Includes: <ul style="list-style-type: none">• Unbranded, unclaimed horses and burros that use public lands as all or part of their habitat;• Animals removed from these lands by an authorized officer;• Animals born to a wild horse or burro in BLM facilities that have not lost wild status under Sec 3 of the Act (e.g. not been transferred for private maintenance and adoption) 43 CFR 4700.0-5
Feral	An animal living in the wild but descended from domesticated individuals
Estray	Any domestic animal found wandering at large or lost, particularly if the owner is unknown

BLM Herd Management Areas



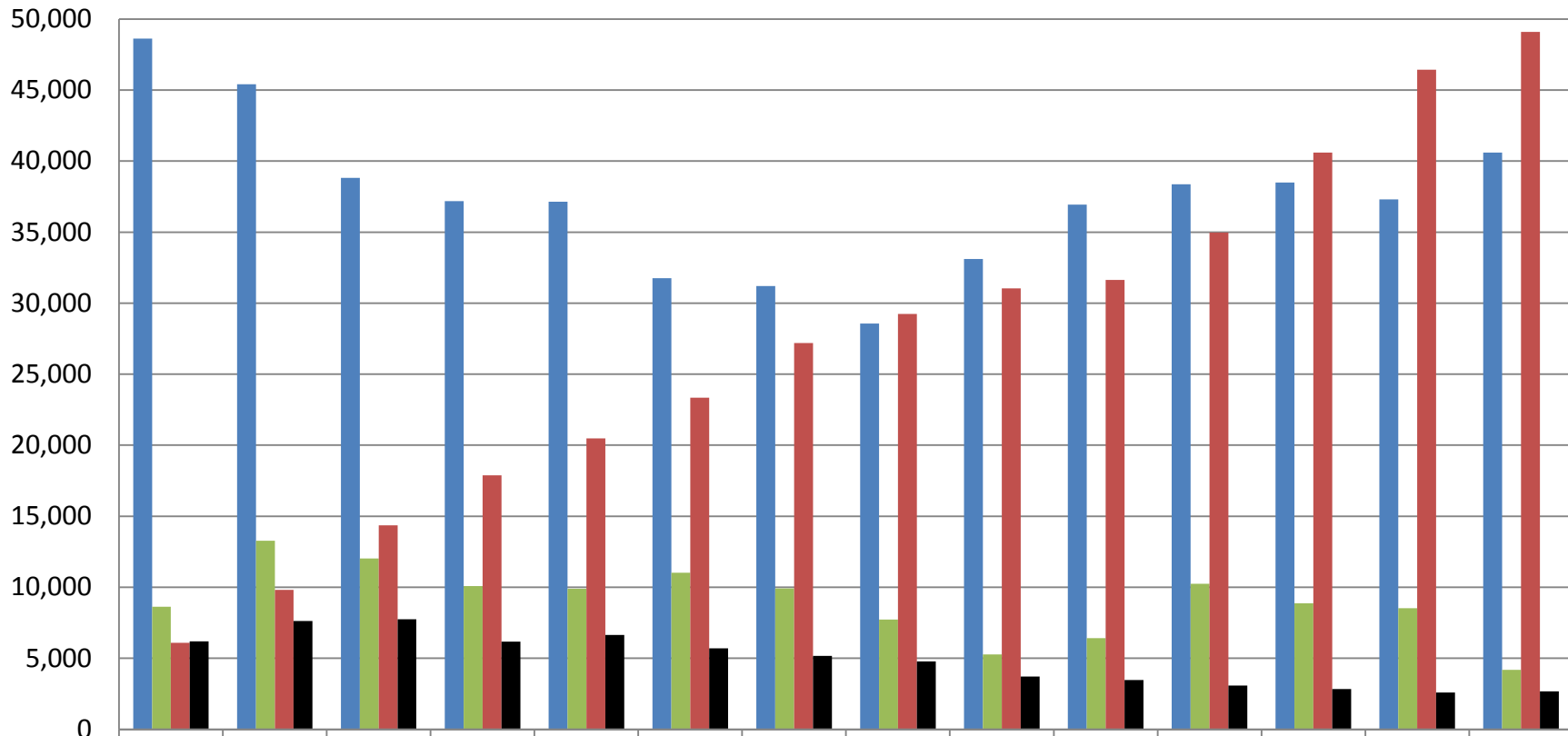
Wild Horse and Burro Program Components

- Conducting population inventories
- Establishing and maintaining AML
- Monitoring herd and rangeland health
- Determining methods for achieving AML
- Caring for animals removed from the range
- Placing animals in private care
- Conducting research – sound science for management



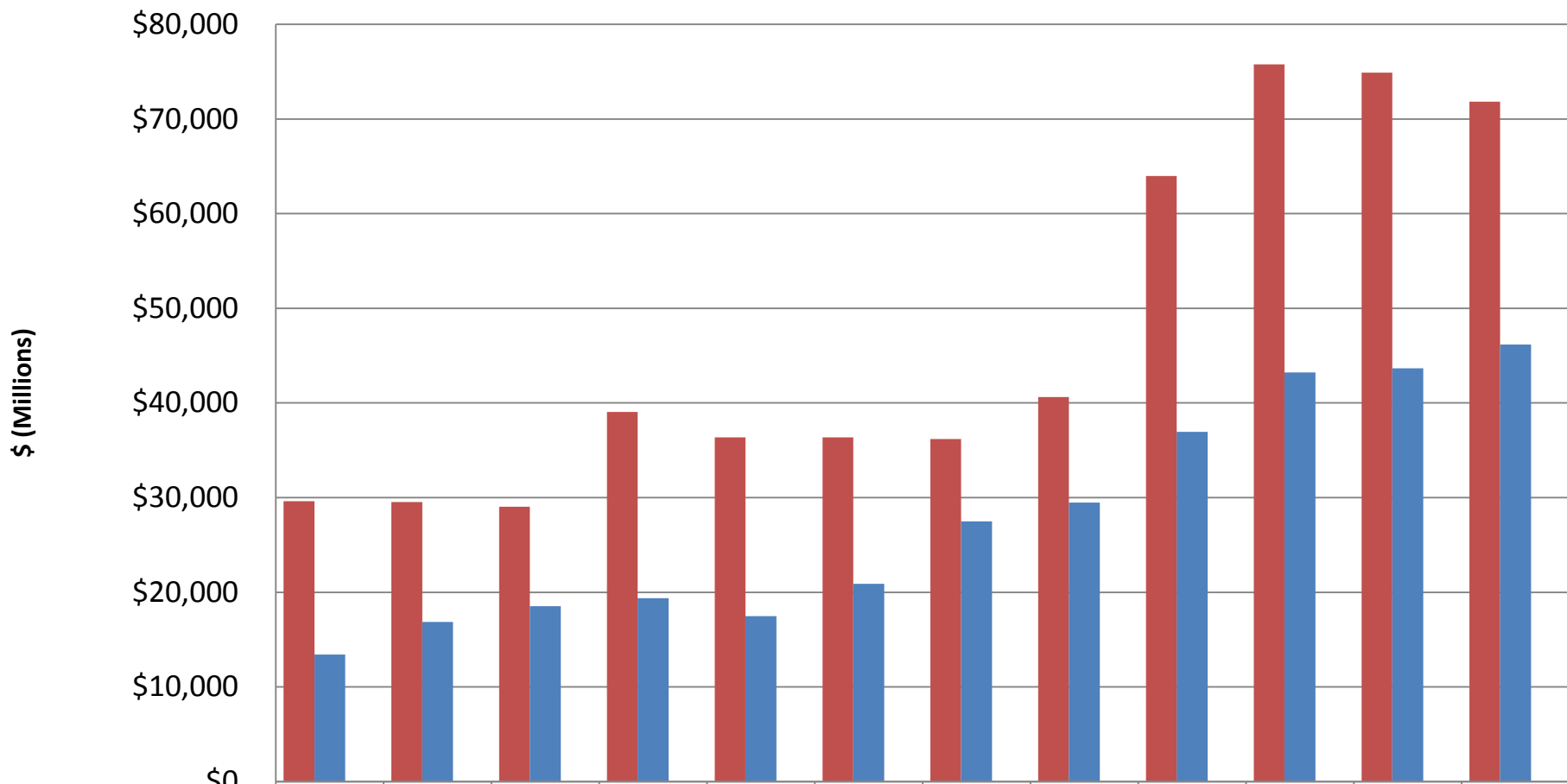
Assateague Island National Seashore	8,850 acres
Average HMA size in Nevada	184,925 acres
Average HMA size	150,308 acres

Removals, Adoptions, On-Range and Off-Range Populations



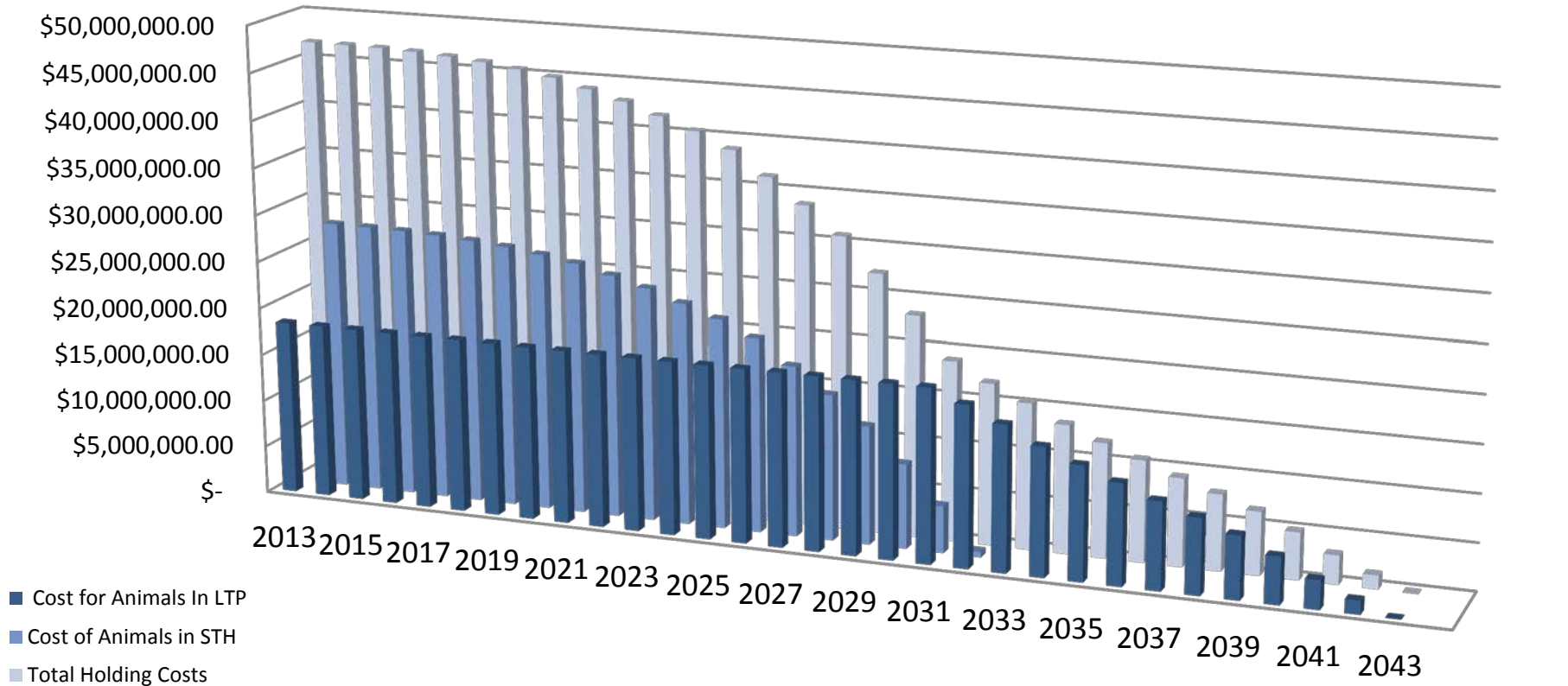
	2000	2001	2002	2003	2004	2005	2006	2007	2008	2009	2010	2011	2012	2013
■ On-Range Population	48,624	45,414	38,815	37,186	37,135	31,760	31,206	28,563	33,105	36,940	38,365	38,497	37,294	40,605
■ Animals Removed	8,631	13,277	12,029	10,081	9,899	11,023	9,926	7,726	5,275	6,413	10,255	8,877	8,522	4,178
■ Off-Range Population	6,086	9,807	14,368	17,879	20,474	23,337	27,195	29,247	31,048	31,639	34,979	40,589	46,429	49,088
■ Animals Adopted	6,192	7,630	7,746	6,165	6,644	5,701	5,172	4,772	3,706	3,474	3,074	2,844	2,583	2,671

Enacted Appropriations vs. Holding Costs



■ Enacted Appropriations	\$29,629	\$29,524	\$29,051	\$39,045	\$36,362	\$36,354	\$36,201	\$40,613	\$63,986	\$75,753	\$74,888	\$71,836
■ Total Holding Costs	\$13,414	\$16,870	\$18,518	\$19,387	\$17,482	\$20,894	\$27,492	\$29,485	\$36,941	\$43,210	\$43,648	\$46,165
% of Budget	45%	57%	64%	50%	48%	57%	76%	73%	58%	57%	58%	64%

Declining Costs as Animals Reach End of Life in Holding



Year	2013	2015	2017	2019	2021	2023	2025	2027	2029	2031	2033	2035	2037	2039	2041	2043
Animal # in STH	15719	15661	15454	14998	14153	12910	11301	8473	4924	318	0	0	0	0	0	0
Animal # in LTP	33761	33761	33761	33761	33761	33761	33761	33761	33761	33761	28270	22128	16984	12244	5601	0
Total Number in Holding	49480	49422	49215	48759	47914	46671	45062	42234	38685	34079	28,270	22128	16984	12244	5601	0

On-Range Population Growth

Scenario Assumes No Removals and No Population Growth Suppression

