

Minutes of the D-E NCA Advisory Council
July 13, 2016, 3:00–6:00 p.m.
Mesa County Courthouse Annex
Grand Junction, Colorado

Council members attending: Katie Steele, Oscar Massey, Bill Harris, Craig Grother, Doug Atchley, Kate Graham, Ralph Files, Kaye Simonson, and Bob Janowski.

Council members absent: Tamera Minnick

BLM staff attending: Collin Ewing, Katie Stevens, Andy Windsor, Chris Joyner, and Marie Lawrence (note-taker).

Members of the public attending: Jan Potterveld, Benjamin Crain, Paula Crain, Calvin Nobles, Judy Nobles, Lee Gelatt, Joel Greene, Gloria Forbes, Terry Gray, Janet Gray, Scherry Schenk, Joe Neuhof, Jim Riddell, and others.

3 p.m.: [Chair Katie Steele called meeting to order and introduced new member Craig Grother, who is replacing Steve Boyle. Council members introduced themselves. Steele asked members of the public to introduce themselves.]

Steele: It's been almost two years since the last Council meeting, the bulk of the discussion between the BLM and public, and two public comment periods. Today's agenda is to go over the differences between the Draft RMP and the Proposed RMP. Collin will walk us through that.

Collin Ewing: The PRMP is out for a 30-day protest period. Let's back up a little and go through some history for folks not here all along. [Ewing began the presentation (see **Attachment**). He went over the introduction, emphasizing that the focus of the presentation was to outline the BLM's responses to the Council's recommendations and to discuss substantive changes between the Draft Preferred Alternative and the Proposed Plan Alternative. Then he outlined the changes re: ACECs].

Steele: [Regarding the Delta to Whitewater trail in the Proposed Plan]: How do new ACECs affect the route of that trail?

Ewing: We think we know what routes to take to avoid ACECs or ACEC resources. [He continued the presentation with a discussion of wild and scenic rivers].

Craig Grother: Are there diversions?

Ewing: Several.

Doug Atchley: Some of that stream is dry.

Ewing: Parts dry up in the summer. [He continued the presentation with a discussion of the Old Spanish National Historic Trail and the Wilderness].

Steele: Are group sizes heartbeats or people?

Ewing: I looked that up. We'll get to that.

Steele: There will still be cattle trailing through there.

Bill Harris: The range in parentheses is how the Council voted.

Atchley: What's the acreage in Zone 1?

[This was further discussed].

Steele: What's the plan for the Billyie Rambo property?

Ewing: Mr. Rambo lived there until he passed away. We sent archeologists out there to record the homestead. We have addressed this in the plan as the Rambo Heritage Area.

Harris: Is the VW bus still there?

Ewing: I'm told it's not. [Regarding group size, the number] 25 is based on what we heard from outfitters. That does not include livestock or pets. Active management is not emphasized in Zones 2 and 3. We are not emphasizing restoration in those zones, but we have the flexibility to actively manage if needed.

Kate Graham: [She read pertinent narrative from the Proposed RMP]: Do not allow intervention unless PPSV factors are poor, then only minimum intervention.

Grother: Is there nothing about re-introductions?

Graham: No; we may need to dig into that more deeply.

Ewing: [He continued the presentation, explaining Planning for Priority Species and Vegetation (PPSV) especially as it pertains to the Gunnison Sage Grouse]. This plan would be amended by the Gunnison Sage Grouse (GUSG) Plan Amendment EIS. This plan has very good protections for Gunnison sage grouse, so there shouldn't be much that needs amending, but it will certainly need to be amended for language consistency.

Katie Steele: Didn't most of this discussion revolve around Cactus Park?

Ewing: Yes. Part of the GUSG critical habitat is there. [He continued the presentation with a discussion of the Council's wildlife recommendations and the language in the Proposed RMP, mentioning the Farmers Canyon loop].

Atchley: Do seasonal restrictions include foot and horse?

Ewing: No.

Grother: We did this [kind of planning] for CPW and it worked very well for the wildlife.

Ewing: [He explained the difference between special recreation management areas (SRMAs) and extensive recreation management areas (ERMAs), then went over the RMAs in the plan].

Oscar Massey: What's your definition of auto touring in Wagon Park: Cadillac or four-wheel?

Ewing: In Wagon Park you would need a four-wheel-drive vehicle.

[There was further discussion about Sawmill Mesa/Wagon Park being a non-motorized loop; Ninemile Hill/Cactus Park boundary being modified, with a motorized connection to the Tabeguache Trail plus quality foot and horse trails; Sawmill Mesa being kept as an ERMA, rather than a mountain bike SRMA; and livestock, specifically the change in terminology to “active movement” instead of “trailing”].

Steele: It’s time for public comment and a break. I see lots of new faces. Please introduce yourselves.

Eric Rechel: I’m with the Sierra Club. Later on, will we get into how all these interact with wildlife?

Steele: This phase sets the objectives. We want to keep this general and not include a lot of detail. Detail is for the implementation phase.

Jan Potterveld: I have a question about Zone 1. I want to work with you so when you close, you do not restrict horse access to water.

[There was a question from the public regarding miles of routes. Ewing emphasized that routes get discussed during appeal period. Now is the time to discuss protestable larger land use decisions].

Potterveld: Where are the routes and on which map?

Ewing: They are on the larger N-1 map and also on the KML [also called KMZ] map online.

[There was further discussion regarding the difference between the goals of the protest period (land use allocations) and the appeal period (route designations)].

4:20–4:40 p.m.: [Break]

Ewing: [He continued the presentation, beginning with bighorn sheep. Someone asked a question regarding llamas]. The pack goat restriction doesn’t include llamas. [Ewing continued the presentation with a discussion of land use authorizations, explaining that there are exceptions for access to private property. The presentation ended at 4:55 p.m.].

Steele: Are there any questions?

Massey: Where is the land that is not allowed for grazing?

Ewing: The only existing allotment that is closed is the unallotted Bean Ranch allotment. [There was further discussion about this]. The Dominguez-Escalante is not proposing to close any allotments that were already allotted.

Graham: It is on page 190. [There was further discussion about the numbers of acres available for grazing].

Ewing: I will look into it.

Grother: [Regarding the] interaction between wild and domestic sheep, out of 17 allotments, 5 are sheep allotments. Both models kicked it up to a higher risk for contact. In order to manage, [are we] talking about terms and conditions in grazing permits? How old are these management plans?

Ewing: I think we've been waiting until this plan is done to renew permits. Terms and conditions will be added upon renewal.

Grother: What would be the trigger point for changes?

Ewing: If monitoring indicates that management is not working.

Atchley: We had extensive discussion about this. It is not resolved. Livestock grazing is written into the legislation. Colorado Parks and Wildlife introduced bighorn sheep without public or BLM input.

Grother: If there are no trigger points in the plan, this may never get looked at.

Steele: I would prefer that this is worked out between the permittee and the range cons.

[This was discussed further, and there was some discussion again of grazing acreage discrepancies].

Ewing: The additional 3,000 acres closed to grazing in the Proposed Plan are lands not currently allotted. Some of these changes [wording of seasonal restrictions on low elevation areas] were made to make the D-E NCA plan consistent with the Grand Junction plan. We're also trying to improve range conditions.

[There was some discussion about wilderness study areas (WSAs)].

Ewing: Congress designated a wilderness slightly smaller than the WSAs. They did not release the WSAs, so they remain. [He pulled up the alternative grazing maps].

Steele: Are there any other questions?

Massey: I still have questions regarding trailing.

[This was discussed further].

Ewing: Focus on far right column in the Alternatives Matrix. We have to compare alternatives for this document, but the Proposed Plan is in the far right column. My understanding (and intention) is in formalizing what was already in the allotment plans.

Massey: As the maps show, everything is open to grazing, but you still have site-specific or seasonal closures. Permittees need to know exactly what these limitations are.

Ewing: [He explained that permittees would work this out with the range cons]. There is still wiggle room to make changes, because we haven't made the decisions yet.

Bob Janowski: Page 1012 says the Advisory Council and cooperating agencies in April and May of 2014 got opportunity to review the travel management plan. Nobody understands the protest process or the appeal process.

Ewing: We have a fact sheet that explains the difference [available online: <http://1.usa.gov/1qKkMVi>; look under **FAQs**].

[There was further discussion about the travel management plan; Ewing reiterated his recommendation to review land use planning decisions during the protest period].

Steele: Why is the travel management plan not protestable?

Potterveld: People who made comments won't understand.

[This was discussed further].

Steele: Any [further] questions from the public?

[One person made a comment about the introduction of bighorn sheep. The sheep were not here when the settlers came. Bighorn sheep weren't there when they started their business].

Potterveld: We have to go to the Interior Board of Land Appeals to appeal route by route decisions? I'm not clear about this.

Ewing: the BLM can do an EA [environmental assessment] to change routes.

Potterveld: I don't think we want to let it ride through this process and then say we need to get an EA.

[There was further discussion between the Council and the public regarding this. Another member of the public brought up the issue of hookless cactus. Why close an area when he didn't see any on the ground there and it's not good habitat for cactus? There was some discussion about this. Steele asked if the Council should discuss the travel management process at the next meeting].

5:50 pm: [The meeting ended].

Attachment

“Dominguez-Escalante National Conservation Area Proposed Resource Management Plan and Final Environmental Impact Statement” (PDF of PowerPoint presentation given at meeting)



**NATIONAL
CONSERVATION
LANDS**

DOMINGUEZ-ESCALANTE NATIONAL CONSERVATION AREA



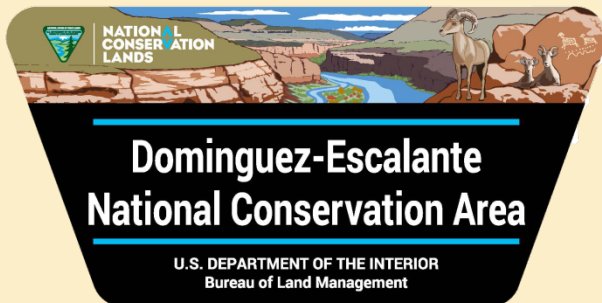
**Bureau of Land
Management**

**Advisory Council
Meeting**

July 13, 2016

**Proposed Resource Management Plan
and
Final Environmental Impact Statement**

**U.S. Department of the Interior
Bureau of Land Management**





NATIONAL
CONSERVATION
LANDS

DOMINGUEZ-ESCALANTE NATIONAL CONSERVATION AREA



DISCUSSION TOPICS



1. Timeline Overview
2. Designation Legislation
3. Public Involvement
4. What is in the plan?
 - Including Changes from the Draft RMP



DOMINGUEZ-ESCALANTE NATIONAL CONSERVATION AREA



TIMELINE

- Summer 2006—Mesa State College, Mesa, Delta, Montrose county commissioners, and Public Land Partnership initiated public community discussions on legislative options for managing the Dominguez-Escalante Special Management Area
- Summer 2007—All counties reached a consensus on recommending NCA and wilderness providing that historic ranching be preserved, no federal reserved water right, Wilderness would not be larger than WSA
- Spring 2009—Omnibus Public Lands Act designated D-E NCA and Dominguez Canyon Wilderness



NATIONAL
CONSERVATION
LANDS

DOMINGUEZ-ESCALANTE NATIONAL CONSERVATION AREA



D-E NCA DESIGNATION

Looking Back....

- March 2009, Congress Designates D-E NCA in Omnibus Public Lands Act
 - Established purposes (wildlife, recreation, ecology, archaeology, etc.)
 - Withdrew area from mineral laws
 - Grazing will continue
 - Designated Dominguez Canyon Wilderness Area
 - Directed to develop a management plan for the long-term protection and management
 - With extensive public input
 - Including a travel management plan
 - No Off route motorized travel
 - Directed BLM to establish an advisory council (has met 34 times to date)
 - advise the Secretary with respect to the preparation and implementation of the management plan
 - 3 members representing the counties, 1 member representing grazing permittees, 5 members representing the purposes, or interests of stakeholders



NATIONAL
CONSERVATION
LANDS

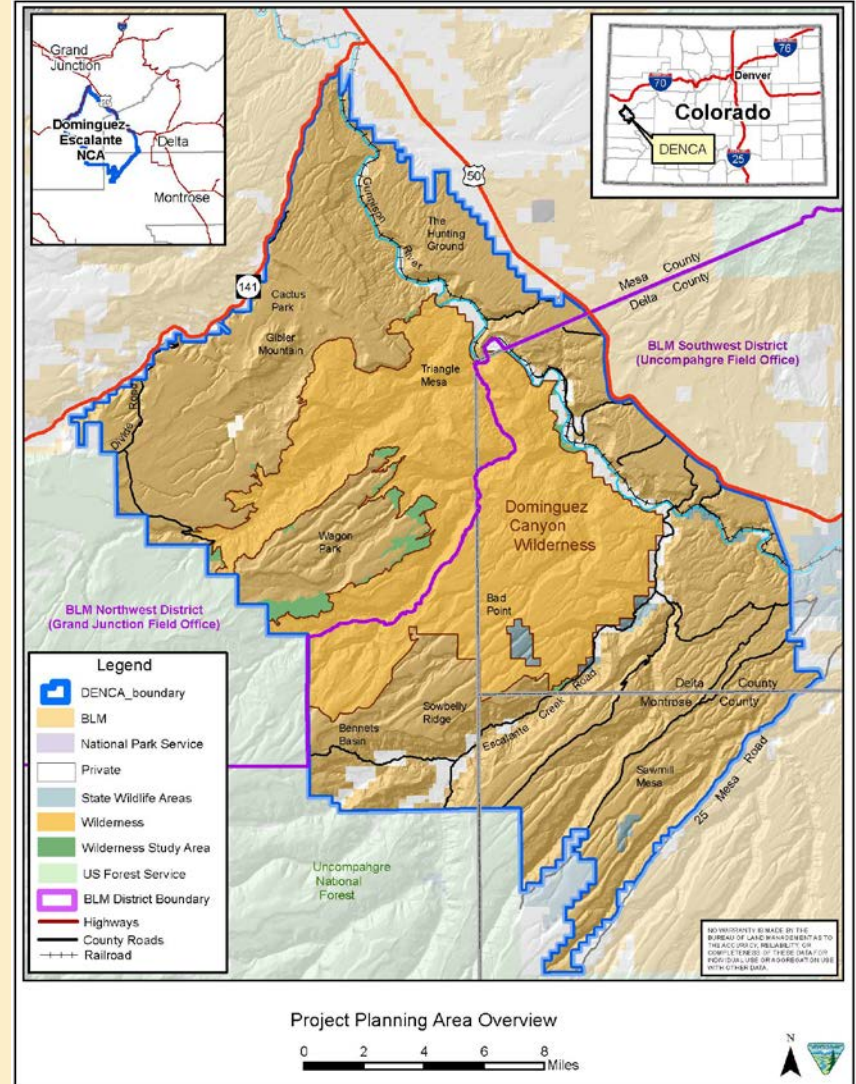
DOMINGUEZ-ESCALANTE NATIONAL CONSERVATION AREA



D-E NCA DESIGNATION

Land Status	Total Acres
BLM	210,172
State of CO	1,965
Private	6,256
Total	218,393

- Dominguez Canyon Wilderness: 66,280 acres
- 2 Field Offices: Uncompahgre, Grand Junction
- 3 counties: Mesa, Delta, and Montrose





**NATIONAL
CONSERVATION
LANDS**

DOMINGUEZ-ESCALANTE NATIONAL CONSERVATION AREA



PURPOSES



Archaeological



Natural



Historic



Geological, Scenic



Wildlife



Wilderness



Cultural



Paleontological,
Scientific,
Educational



Recreational
Riparian,
Water



NATIONAL
CONSERVATION
LANDS

DOMINGUEZ-ESCALANTE NATIONAL CONSERVATION AREA



Looking Back....

- *August 2010 BLM issued Notice of Intent to prepare DRMP/DEIS*
- November 2010, D-E Advisory Council (AC) Formed
- January 2011-April 2013 AC met 25 times to share information and make recommendations to BLM
- May-Sept 2013 Public comment on Draft RMP (6 AC meetings)
- October 2013 to May 2016– BLM analyzed public comments and prepared the Proposed RMP/Final EIS (4 AC meetings)



NATIONAL
CONSERVATION
LANDS

DOMINGUEZ-ESCALANTE NATIONAL CONSERVATION AREA



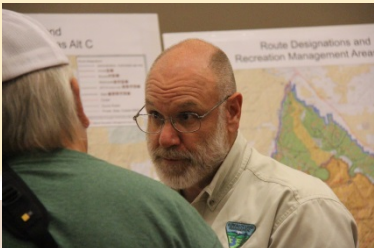
PUBLIC INVOLVEMENT & CONSULTATION

Open Houses

- 2 Scoping in 2010
- 2 Travel management in 2010/2011
- 2 Draft RMP in 2013

Stakeholder Meetings

- 5 Wild and Scenic River
- Colorado Mesa University focus group
 - ✓ 6 recreation/wilderness forums
 - ✓ Visitor surveys and report
- 3 socioeconomic workshops



To Date

- 10 CA meetings
- 35 AC meetings; 3 field trips
- Consultation with 3 Ute tribal governments
- 15 *Canyon Clarion* newsletters





DOMINGUEZ-ESCALANTE NATIONAL CONSERVATION AREA



COOPERATORS

D-E NCA Advisory Council

Representatives:

- 1 member representing each county government
- 1 member representing grazing permittees
- 6 residents representing purposes or interests of stakeholders



Cooperating Agencies

Delta County

Mesa County

Montrose County

City of Delta

City of Grand Junction

City of Montrose

Colorado Dept. of Natural Resources:

- Colorado Parks and Wildlife
- Colorado Water Conservation Board

U. S. Forest Service

Native American Tribes

Ute Tribe of the Uintah & Ouray Reservations

Southern Ute Indian Tribe

Ute Mountain Ute Tribe



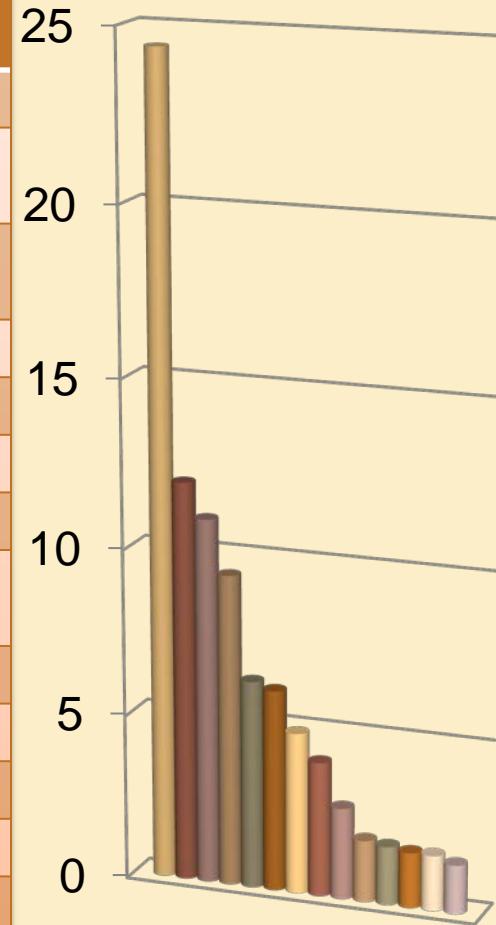


DOMINGUEZ-ESCALANTE NATIONAL CONSERVATION AREA



PUBLIC COMMENTS to Draft RMP

Comment Category	Number of Comments	Percentage of Total
Recreation	429	24.4%
Travel Management: Route Designation	212	12.0%
Travel Management: Allocations and Process	193	11.0%
Wildlife	166	9.4%
Livestock Grazing	110	6.3%
Vegetation/Special Status Plants	108	6.1%
Recreational Target Shooting	86	4.9%
Wilderness and lands with wilderness characteristics	73	4.1%
ACEC	54	3.1%
Socioeconomics	50	2.8%
Soils and Water	34	1.9%
Implementation-Level Comments	31	1.8%
Wild and Scenic Rivers	30	1.7%
General Planning	30	1.7%
Cultural and Heritage Resources	27	1.5%





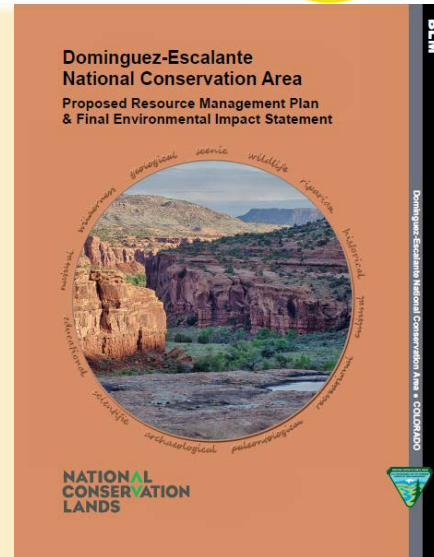
DOMINGUEZ-ESCALANTE NATIONAL CONSERVATION AREA



TIMELINE

Looking Forward...

- July 1-31 Protest Period (30 days)
- July 1-August 30 Governor's consistency review (60 days)
- *September 2016 (hopefully), Record of Decision and Approved RMP*
 - *30 day appeal period on route designations*





NATIONAL
CONSERVATION
LANDS

DOMINGUEZ-ESCALANTE NATIONAL CONSERVATION AREA



WHAT'S IN THE PROPOSED PLAN ALTERNATIVE?





NATIONAL
CONSERVATION
LANDS

DOMINGUEZ-ESCALANTE NATIONAL CONSERVATION AREA



WHAT'S IN THE PROPOSED PLAN ALTERNATIVE?

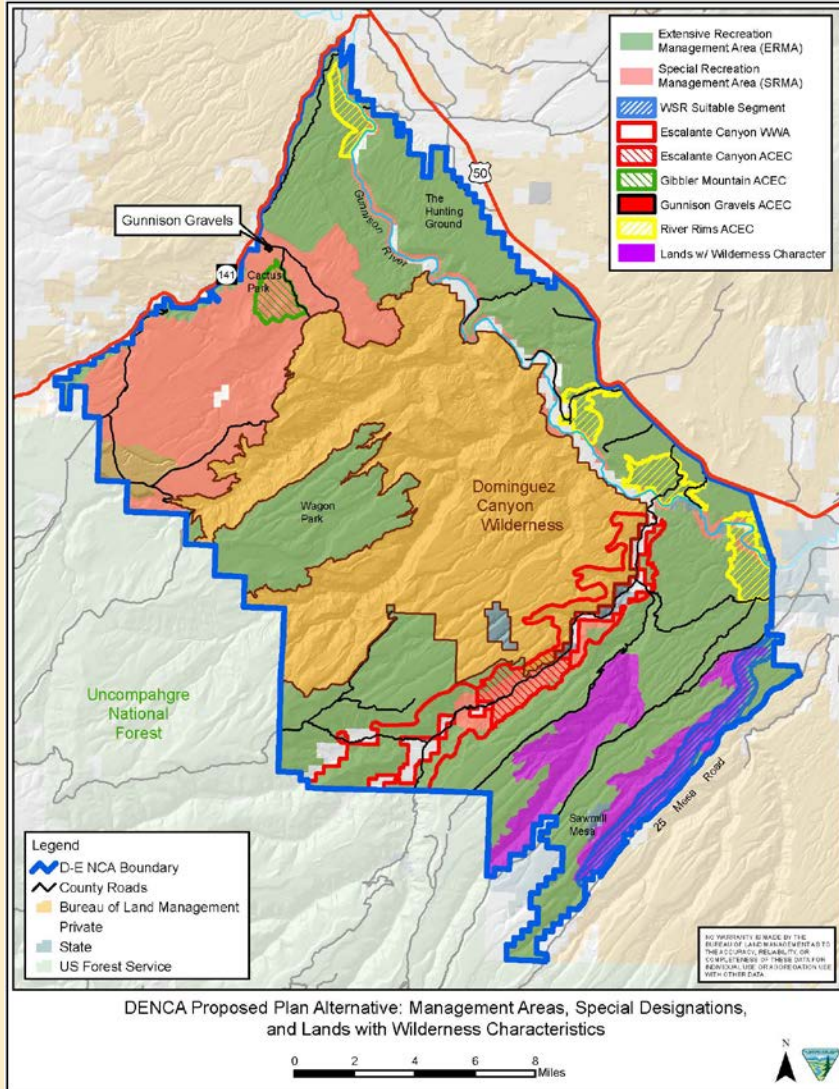
Intent of this Presentation:

- Focus on BLM's response to Advisory Council recommendations on RMP allocation decisions
- Discuss substantive changes made from Draft Preferred Alt. to Proposed Plan Alt.

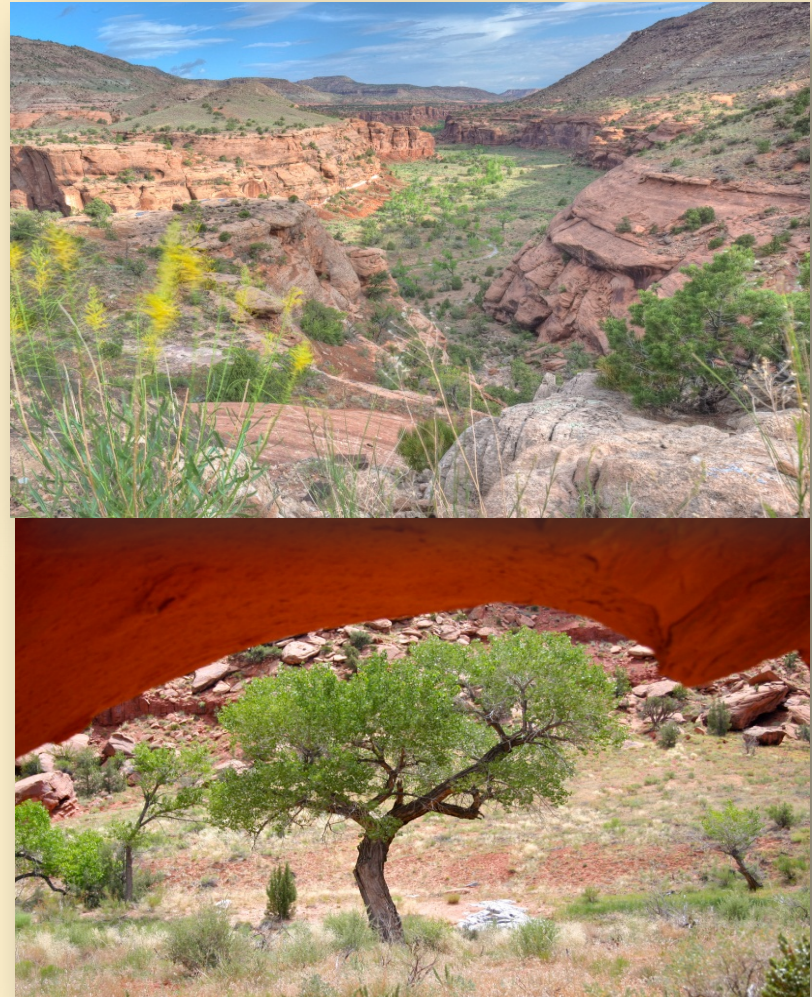


NATIONAL
CONSERVATION
LANDS

DOMINGUEZ-ESCALANTE NATIONAL CONSERVATION AREA



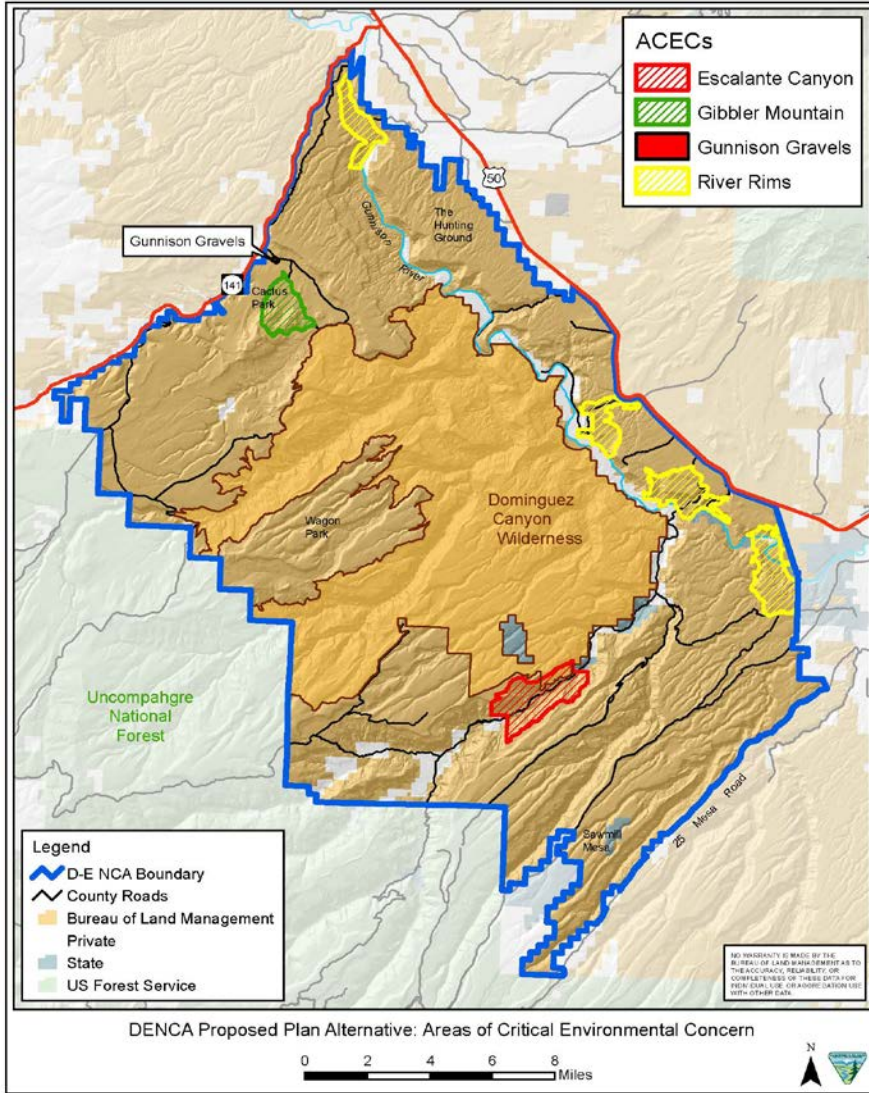
SPECIAL DESIGNATIONS





NATIONAL
CONSERVATION
LANDS

DOMINGUEZ-ESCALANTE NATIONAL CONSERVATION AREA



ACECs

- Carry forward current Gunnison Gravels and Escalante Canyon ACECs
- Add new Gibbler Mountain and River Rims ACECs – managed for protection of sensitive paleontological resources and rare plant species



NATIONAL
CONSERVATION
LANDS

DOMINGUEZ-ESCALANTE NATIONAL CONSERVATION AREA



Recommendations: Areas of Critical Environmental Concern

AC recommendation: Support alternative D for **Gibbler Mountain [ACEC]** within the Cactus Park SRMA; support a horse route or quiet trail as opportunities arise.
(9-0)



PRMP language: Designate 1,265 acres within the Gibbler Mountain area as an ACEC (slightly smaller and less restrictive protections for plants than in Alt D).

Also designating Gunnison Gravels ACEC.



NATIONAL
CONSERVATION
LANDS

DOMINGUEZ-ESCALANTE NATIONAL CONSERVATION AREA



WILD AND SCENIC RIVERS

- 1 segment found
Suitable in Draft RMP
- In Proposed - BLM
would not forward
Suitable
recommendation
 - ✓ seek in-stream flow
thru Colorado Water
Conservation Board





NATIONAL
CONSERVATION
LANDS

DOMINGUEZ-ESCALANTE NATIONAL CONSERVATION AREA



OLD SPANISH NATIONAL HISTORIC TRAIL

- Auto-tour interpretive opportunities along designated routes, Highway 50, and on county roads



Dominguez-Escalante NCA Proposed Resource Management Plan

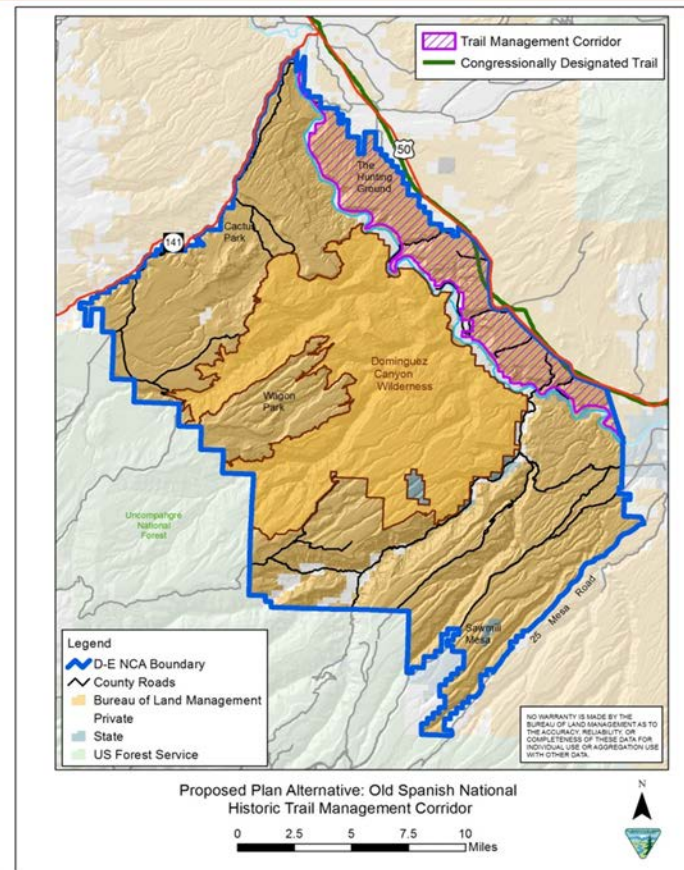


Figure 2-17p



NATIONAL
CONSERVATION
LANDS

DOMINGUEZ-ESCALANTE NATIONAL CONSERVATION AREA



Recommendations: National Trails

AC recommendation: Protect the **Old Spanish Trail** and use **off-site interpretation** versus on-the-ground. (9-0)

PRMP language: Manage the Old Spanish NHT Management Corridor for auto-tour (along Highway 50 and county roads) interpretive opportunities.





**NATIONAL
CONSERVATION
LANDS**

DOMINGUEZ-ESCALANTE NATIONAL CONSERVATION AREA

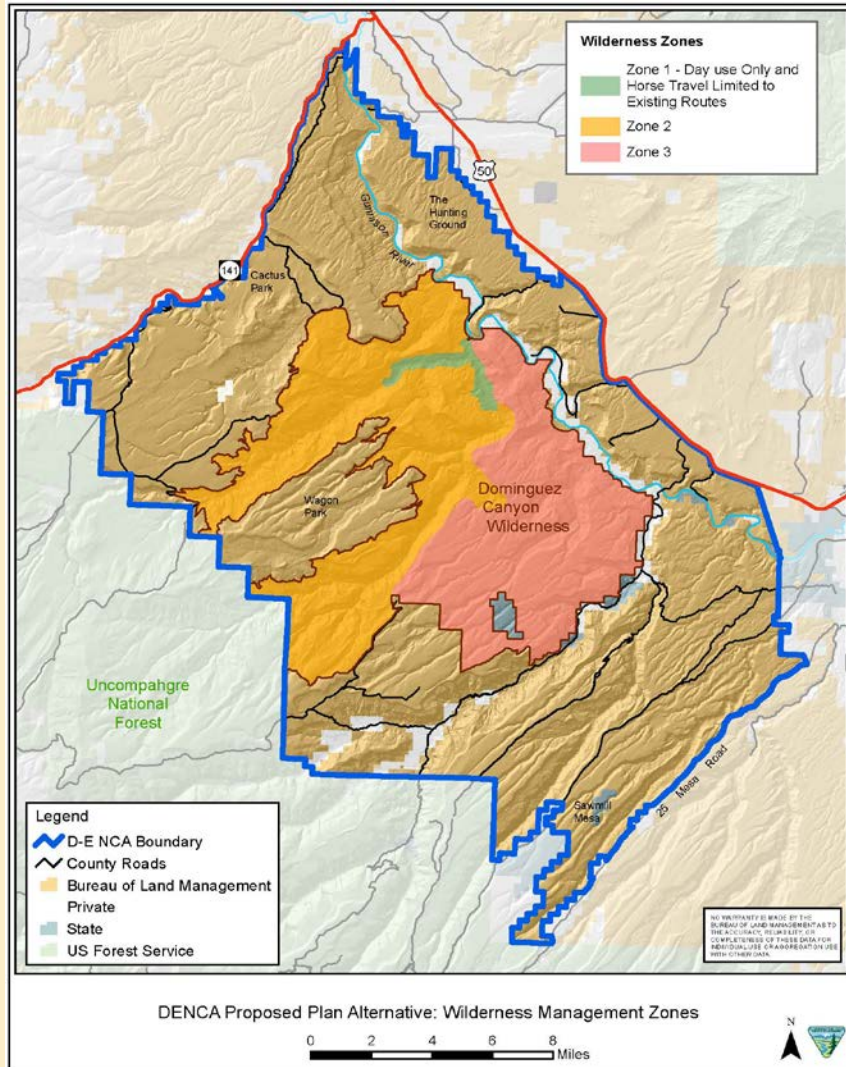


RESOURCES





DOMINGUEZ-ESCALANTE NATIONAL CONSERVATION AREA



DOMINGUEZ CANYON WILDERNESS

Proposed Plan Alternative

Zone 1	Zone 2	Zone 3
Emphasis on protecting and restoring naturalness	Zone 1 management, plus protecting supplemental values and opportunities for solitude	Zone 1 and Zone 2 management, plus opportunities for primitive and unconfined recreation

- Group size limit 25 in Zone 1 and 12 in Zone 2 & 3
- Active vegetation management in the wilderness limited to “fair” or “poor” conditions



NATIONAL
CONSERVATION
LANDS

DOMINGUEZ-ESCALANTE NATIONAL CONSERVATION AREA



Recommendations: Wilderness

AC recommendation: **Limit travel to designated routes in Zone 1**, with considerations for need to water horses, cultural and heritage resources, hunting.
(9-0)

PRMP language: Designate as limited to existing routes for horse travel to enhance supplemental values. Allow off-route foot travel. Close trails or areas to foot and horse travel where necessary to protect resources (e.g., trails that lead to cultural sites not allocated to public use). Inventory routes in Zone 1 to update existing BLM inventory and produce associated map for public.



DOMINGUEZ-ESCALANTE NATIONAL CONSERVATION AREA



Recommendations: Wilderness

AC recommendation: Support alternative E for **group size** limitations (*Zone 1: 12, Zone 2: 8, Zone 3: 12 including pets and stock*), so long as BLM retains the flexibility to meet NCA goals regarding education and other values. (7-2)

PRMP language: **Wilderness Zone 1:** Limit group size to 25 people or fewer. **Wilderness Zones 2 and 3:** Limit group size to 12 people or fewer.

AC recommendation: **Protect and restore** supplemental values (T&E species, cultural and paleo resources) in all zones. (9-0)

PRMP language: Wilderness Zone 1: Protect and restore supplemental values, Wilderness Zones 2 and 3: Protect supplemental values



NATIONAL
CONSERVATION
LANDS

DOMINGUEZ-ESCALANTE NATIONAL CONSERVATION AREA



LANDS WITH WILDERNESS CHARACTERISTICS

- Cottonwood Canyon/Dry Fork managed for wilderness characteristics

Change: Overlapping SRMA designation and recreation objectives removed





NATIONAL
CONSERVATION
LANDS

DOMINGUEZ-ESCALANTE NATIONAL CONSERVATION AREA



PRIORITY SPECIES AND VEGETATION GUNNISON SAGE GROUSE

Will be amended by GuSG Plan Amendment EIS



Manage sagebrush habitat to:

- Prohibit Surface Disturbance in winter habitat
- Use vegetation treatments to meet structural habitat guidelines for GuSG
- No new routes in unfragmented sagebrush shrublands
- Close routes to reduce fragmentation
- Prevent Pinyon-juniper expansion into sagebrush shrublands





NATIONAL
CONSERVATION
LANDS

DOMINGUEZ-ESCALANTE NATIONAL CONSERVATION AREA



Recommendations: Priority Species and Vegetation

GUNNISON SAGE GROUSE

AC recommendation: Allow no new routes in sagebrush patches 60 acres or larger; it is acceptable to reroute interior routes to the edges of a patch

PRMP language: Prohibit the construction of new routes in existing, unfragmented sagebrush shrublands 60 acres or larger. Reroutes would be placed to avoid encompassing more than half of the perimeter of the patch.



MOUNTAIN SHRUB

AC recommendation: Support alternative D for the management of mountain shrub land communities.

PRMP language: *Same as Alternative D*





NATIONAL
CONSERVATION
LANDS

DOMINGUEZ-ESCALANTE NATIONAL CONSERVATION AREA



Recommendations: Wildlife

AC recommendation: The BLM should retain seasonal closures as in Alternative E of the draft RMP and leave Farmer's Canyon Road open year round.

PRMP language: Implement seasonal closures from December 1 to April 30 in Gibbler Gulch, Wagon Park, Sowbelly, Upper Sawmill Mesa and Dry Mesa.

Exception: The Farmers Canyon route, within the seasonal closure, would remain open year-round to provide a motorized "loop" opportunity until a new route can be connected north of Farmers Canyon to divert use away from the seasonal closure area as much as practicable.





**NATIONAL
CONSERVATION
LANDS**

DOMINGUEZ-ESCALANTE NATIONAL CONSERVATION AREA



RESOURCE USES





**NATIONAL
CONSERVATION
LANDS**

DOMINGUEZ-ESCALANTE NATIONAL CONSERVATION AREA



RECREATION MANAGEMENT AREAS

Name	Type	Targeted Use	Acres
Gunnison River	SRMA	Non-motorized float boating, camping	3,746
Cactus Park	SRMA	Motorized trail use, camping	27,406
Escalante Canyon	SRMA	Heritage and Wildlife Tourism, Education, ecological resources, picnicking	2,880
Ninemile Hill	ERMA	Equestrian and Hiking trails and dispersed camping	10,440
Sawmill Mesa/Wagon Park	ERMA	Motorized, non-motorized, dispersed camping, big-game hunting, backcountry auto touring	58,718
East Creek	ERMA	Auto touring and climbing	1,783
Hunting Ground	ERMA	Motorized, non-motorized, dispersed camping. Old Spanish NHT setting protection and interpretation.	23,131
Total			128,104 (61% of total planning area)
<ul style="list-style-type: none"> Alternative A (existing RMPs) have no RMA designations Proposed Plan 39% of planning area has no RMA designation (mostly Wilderness) 			



NATIONAL
CONSERVATION
LANDS

DOMINGUEZ-ESCALANTE NATIONAL CONSERVATION AREA

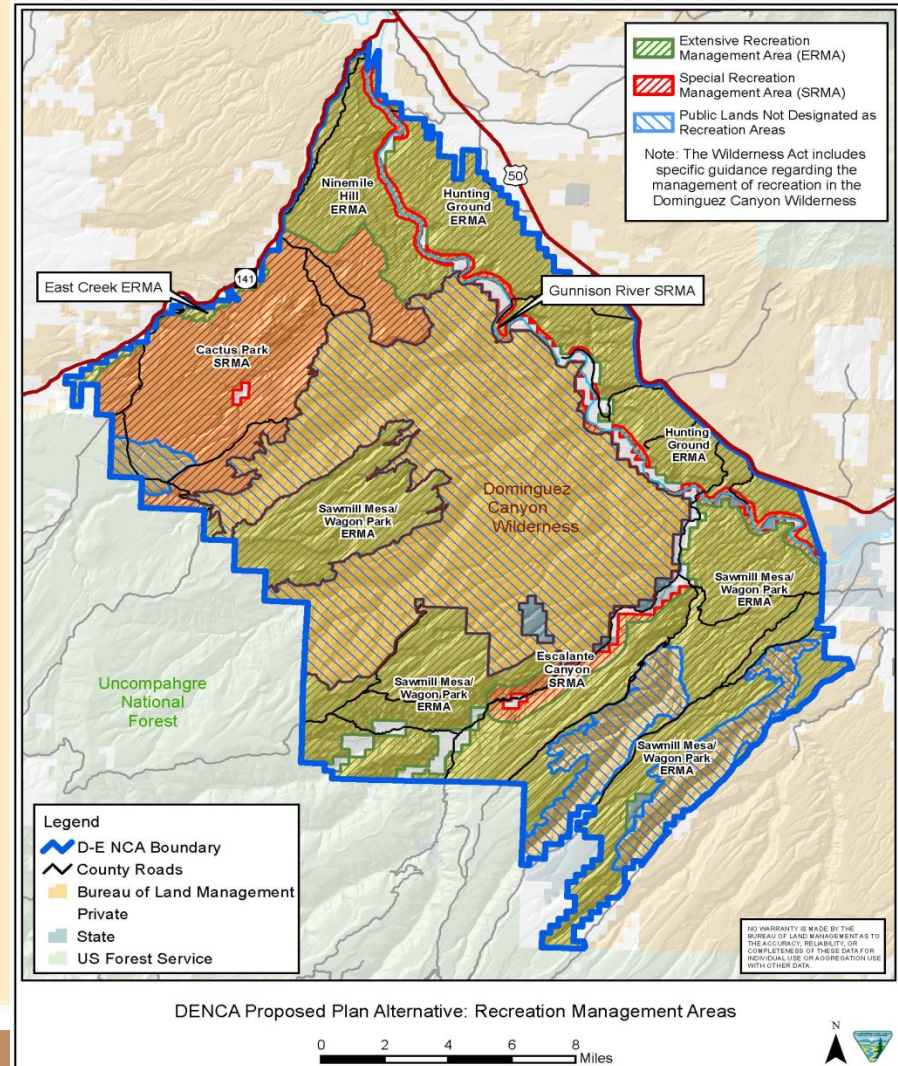


Changes from Draft to Proposed:

Sawmill Mesa/Wagon Park Seek opportunity to work with community partners to complete and implement a plan to develop non-motorized loop trail system

Ninemile Hill ERMA/Cactus Park SRMA boundary changed to provide more motorized access and connection to Tabeguache Trail

Additional socioeconomic analysis including analysis of socioeconomic non-market values, other changes to socio





DOMINGUEZ-ESCALANTE NATIONAL CONSERVATION AREA



Recommendations: RECREATION

AC recommendation: **In Ninemile Hill, manage for quiet use** with exceptions for County roads and pullouts, emphasize creating a long-distance corridor with associated facilities; *(passed)*

PRMP language: Develop a quality foot and horse trail system that incorporates existing routes, while ensuring connectivity of the Tabeguache trail through the Ninemile Hill RMA to Cactus Park for all motorized and non-motorized uses.

Also modified boundary to give Cactus Park (motorized) users more access to views above the Gunnison Slopes.



NATIONAL
CONSERVATION
LANDS

DOMINGUEZ-ESCALANTE NATIONAL CONSERVATION AREA



Recommendations: RECREATION

AC recommendation: Sawmill Mesa should remain an ERMA, with the area north of the Escalante Rim Road set aside as a non-motorized SRMA for mountain biking. The BLM should emphasize the use of existing routes, combining them to develop a new mountain bike trail system, as resource conservation needs allow.

PRMP language: When feasible with support of local community and partners (e.g., user groups, retail shops, service providers), complete and implement an activity level plan to develop a non-motorized “Loop” trail system north of the Escalante Rim Road and outside the River Rims ACEC. During implementation, as new routes are constructed, existing routes would be closed and rehabbed or rehabbed to a single track trail.





DOMINGUEZ-ESCALANTE NATIONAL CONSERVATION AREA



Recommendations: RECREATION

AC recommendation: Close the mouth of Big Dominguez to camping. (*passed 5-3; 1 unsure*).

Also: discussed ensuring river is open to motor boats starting in September waterfowl season, instead of starting in October

PRMP language: Close the mouth of Dominguez Canyon to non-boating overnight camping from May 1 through Labor Day weekend.

Also: Close BLM boat ramps and campsites to motorized boat use from May 1 through Labor Day weekend.





DOMINGUEZ-ESCALANTE NATIONAL CONSERVATION AREA



Recommendations: RECREATION

AC recommendation: **Ban glass** containers in the NCA. (6-2)

PRMP language: Prohibit glass containers at: Potholes, Gunnison River RMA. Consider prohibiting glass containers in other areas if monitoring indicates an increase in broken glass that negatively impacts scenic resources.

AC recommendation: **Allow physical geocaches** in the NCA; only allow virtual geocaches in the Wilderness. Present geocaches should be grandfathered; future sites would require BLM's approval. (9-0)

PRMP language: Navigational recreational activity (i.e., geocaching) requires BLM authorization prior to placement. Allow physical caches outside the Wilderness. Only allow earth (not physical) caches inside the Wilderness. Evaluate existing sites for resource concerns.



DOMINGUEZ-ESCALANTE NATIONAL CONSERVATION AREA



RECREATIONAL TARGET SHOOTING

Alternative	Acres Closed
Proposed Plan Alt	9,995
Draft Preferred	9,995

- Hunting specifically allowed in the NCA, following state regulations
- 95% of the NCA open to target shooting
- About 10,000 acres closed for public safety and Scenic geologic and cultural resources (campgrounds, trailheads, narrow scenic red rock canyons with rock art)





NATIONAL
CONSERVATION
LANDS

DOMINGUEZ-ESCALANTE NATIONAL CONSERVATION AREA



Recommendations: RECREATION

AC recommendation: Support alternative E for management of target shooting (*passed*)

PRMP language:

Same as Draft Preferred (Alternative E)





NATIONAL
CONSERVATION
LANDS

DOMINGUEZ-ESCALANTE NATIONAL CONSERVATION AREA



AC recommendation: **Seek additional access** points into the Wilderness, the NCA in general...

PRMP language: *Can be found in the objectives for the RMAs. Example: With partners (e.g., local governments, trail organizations, user groups, service providers, and tourism councils), design and construct a mixed-use connective trail between Whitewater and Delta.*





DOMINGUEZ-ESCALANTE NATIONAL CONSERVATION AREA



LIVESTOCK GRAZING

Available to Grazing (ac)	Closed to Grazing (ac)	Active Movement Only (ac)	AUMs
206,127	3,850	11,938	14,349



- Closing the Bean allotment (currently unallotted)
- Major canyons (riparian) would be limited to trailing only
- Seasonal restrictions on low elevation areas not meeting land health



NATIONAL
CONSERVATION
LANDS

DOMINGUEZ-ESCALANTE NATIONAL CONSERVATION AREA



Recommendations: Grazing

AC recommendation: Keep **Rose Creek open** but close the **Bean Ranch allotment**. (*passed*)

PRMP language: Close Bean allotment (due to conflicts with adjoining private lands). Limit Rose Creek to active movement between grazing areas to protect riparian values.

Also: Added language to purpose and need about grazing as an important use to continue, as well as additional socioeconomic analysis.

Other Changes from Draft to Proposed:

- Defined livestock trailing – “active movement”
- Utilization determined on a site-specific basis





DOMINGUEZ-ESCALANTE NATIONAL CONSERVATION AREA



Recommendations: GRAZING/BIGHORN SHEEP

- Advisory Council did not make formal recommendations to change the Draft Preferred
- At Last Council Meeting BLM committed to:
 - Revisit the dog numbers to see if wording can be made to get the objective across without the numbers of dogs.
 - Redefine the yearling/bred ewe language
 - Double check the gregarious breeds
 - Add results of Risk of Contact Model





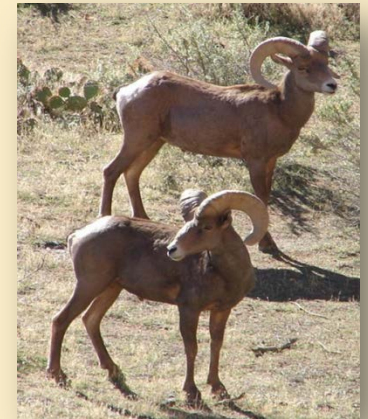
DOMINGUEZ-ESCALANTE NATIONAL CONSERVATION AREA



GRAZING/BIGHORN SHEEP

Changes:

- Included National Risk of Contact Model results
- Updated protective measures for each risk category
 - ✓ Herd size increased to 2,000
 - ✓ Consider converting from sheep to cattle when opportunities arise
 - ✓ All domestic ewes must be bred prior to turnout
 - ✓ Reduced Required minimum to 2 Guard dogs
- Restrict motorized and non-motorized route construction in bighorn sheep lambing areas
- No pack goats





DOMINGUEZ-ESCALANTE NATIONAL CONSERVATION AREA



LAND USE AUTHORIZATIONS

For new ROWs:

Draft RMP – ROW exclusion for entire NCA except Highway 50 buffer (ROW avoidance) and Unaweep Canyon (Utility Corridor)

Allow for reasonable access to non-Federal property

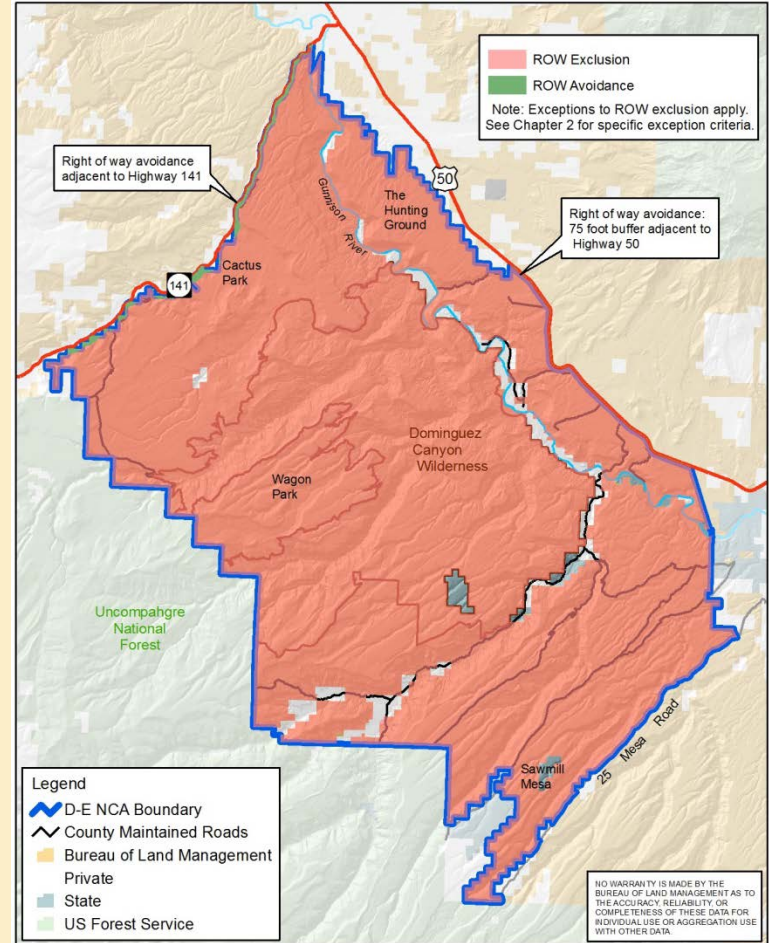
Proposed – ROW exclusion for entire NCA except Highway 50 buffer (ROW avoidance) and Unaweep Canyon (ROW Avoidance)

Allow for reasonable access to non-Federal property

ROW avoidance definition:

“....may be available for ROW location with special stipulations”

Council recommended a “High bar” approach for ROWs



Proposed Plan Alternative: Right-of-Way Exclusion and Avoidance Areas (only applies to new rights-of-way)





NATIONAL
CONSERVATION
LANDS

DOMINGUEZ-ESCALANTE NATIONAL CONSERVATION AREA

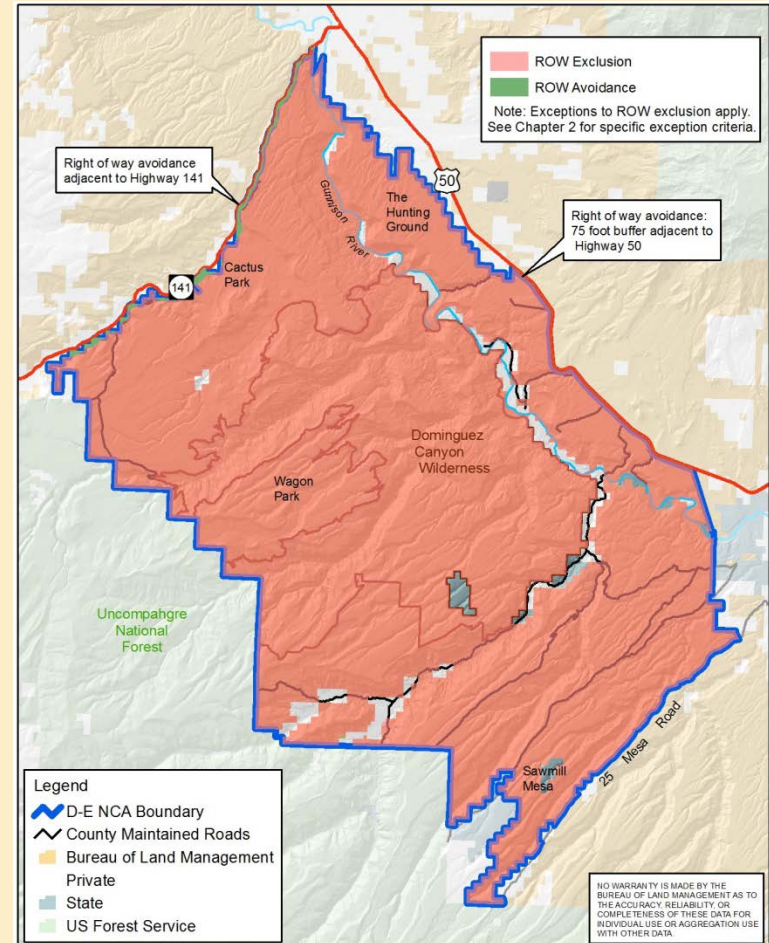


Recreational Prospecting

Draft RMP – "Close the D-E NCA to all recreational prospecting."

Proposed – "Allow recreational gold panning in the NCA. Panning will be restricted to collection of material with non-motorized and non-mechanized equipment below the surface of the water. It will also be restricted to processing of material with non-motorized and non-mechanized equipment. Re-evaluate if resource conditions warrant restrictions or closures. Close the D-E NCA to all other forms of recreational prospecting."

Council recommended restrictions
on prospecting, panning in the river only
(9/2011 & 5/2012)



Proposed Plan Alternative: Right-of-Way Exclusion and Avoidance Areas
(only applies to new rights-of-way)



DOMINGUEZ-ESCALANTE NATIONAL CONSERVATION AREA



Social and Economic Conditions

- Additional information on agricultural income included
- Analysis expanded to include non-market value of agriculture and recreation
- Appendix describing analysis method added
- Highlighted importance of agriculture and recreation to local economy



**NATIONAL
CONSERVATION
LANDS**

DOMINGUEZ-ESCALANTE NATIONAL CONSERVATION AREA



TIME FOR QUESTIONS

