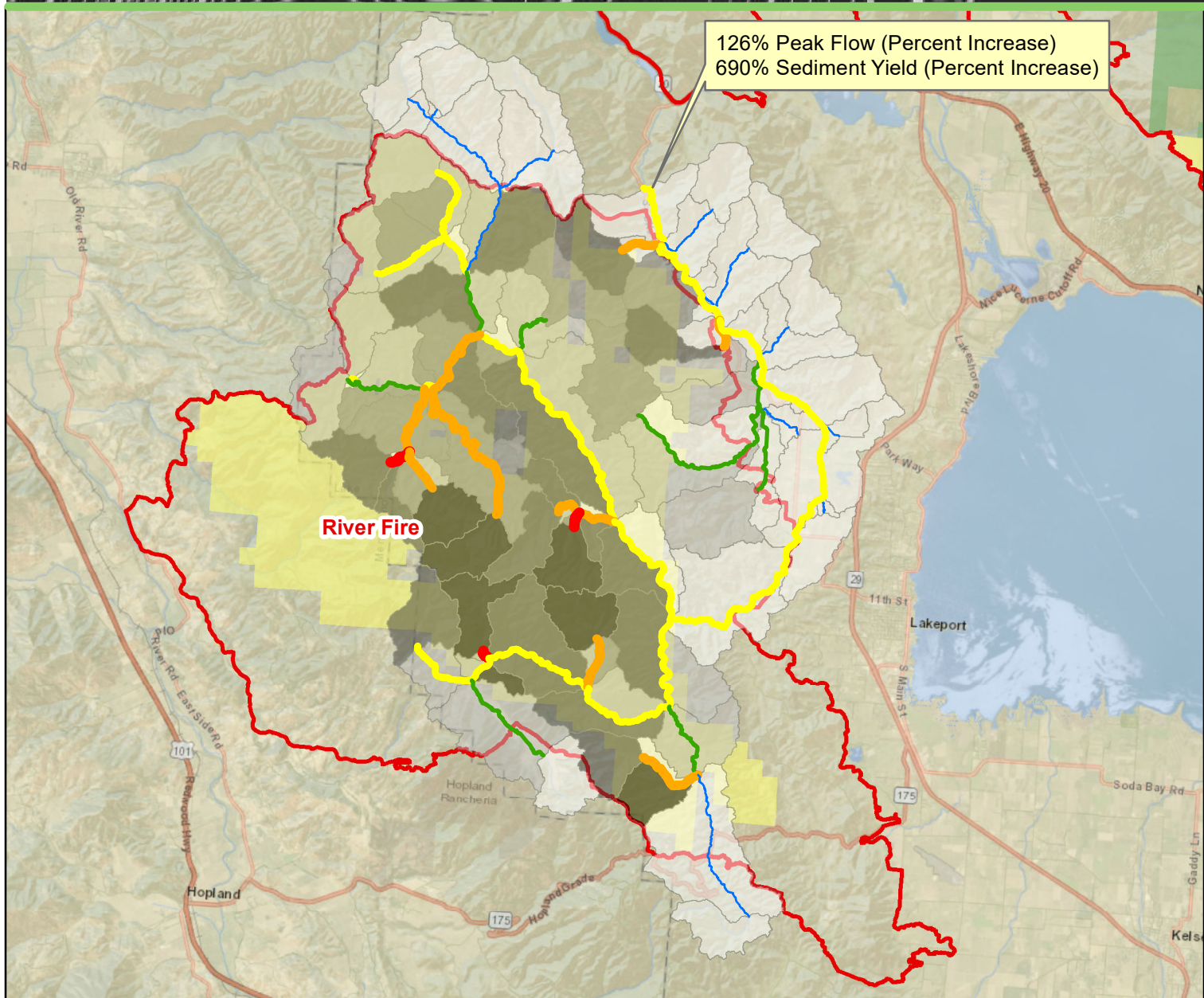
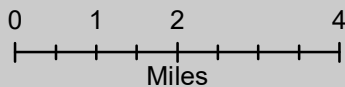




**U.S. Department of Interior
Bureau of Land Management - Ukiah**



**Scotts Creek
Watershed Response
47,045 Acres
2018 River Fire**



Fire Perimeter

Bureau of Land Management

USDA Forest Service

Peak Flow (Percent Increase)

0 - 44

45 - 107

108 - 170

171 - 283

284 - 553

Sediment Yield (Percent Increase)

0 - 220

221 - 718

719 - 1360

1361 - 2913

2914 - 5207

This map is for display purposes only.
Storm Modeled is a 2 hour 25 year event.
Precipitation: 36.83mm
Storm Type: SCS Type 2
BAER-THSP-KE 8/18/18

