

Order Number CAD-000-2018-04
Fire Prevention Orders
Bureau of Land Management
California Desert District

It is the policy of the Bureau of Land Management (BLM) to take all necessary actions to protect human life, public lands, and resources and improvements thereon through the prevention of wildfires. Wherever possible, the BLM will comply with **Title 43 Code of Federal Regulations, Section 9212.2** requiring the BLM to establish fire prevention orders to assist with wildland fire prevention efforts throughout the geographical area. This geographical area consists of public lands within the California Desert District (CDD) in Imperial, Inyo, Kern, Los Angeles, Mono, Orange, Riverside, San Bernardino, and San Diego counties.

Under the authority of the Federal Land Policy and Management Act of 1976 (**43 U.S.C. 1701 et. Seq.**) and pursuant to **43 CFR §9212.2**, the following fire prevention orders are issued:

As of October 3, 2018 at 00:01 AM, all BLM-managed public lands within the California Desert District south and west of Highway 58 from the CDD western boundary to Highway 14, west of Highway 14 from its junction with Highway 58 to its junction with Highway 138, west and south of Highway 138 from its junction with Highway 14 to its junction with Highway 18, south and west of Highway 18 from its junction with Highway 138 to its junction with Highway 247, south and west of Highway 247 from its junction with Highway 18 to its junction with Highway 62, north and west of Highway 62 from its junction with Highway 247 to its junction with Interstate 10, north of Interstate 10 from its junction with Highway 62 until its junction with Highway 111, south and west of Highway 111 from its junction with Interstate 10 to its junction with Highway 86 just north of Mecca, south and west of Highway 86 from its junction with Highway 111 to the Riverside/Imperial County line, and all CDD managed lands within San Diego County shall be under Stage III Restrictions.

As of October 3, 2018 at 00:01 AM, all BLM-managed public lands within the California Desert District south and east of Highway 178 from its junction with Highway 127 to Chicago Valley Road, south and west of Chicago Valley Road from its junction with Highway 178 to its junction with Chicago Wash, west of Chicago Wash from its junction with Chicago Road to Old Spanish Trail, north and west of Old Spanish Trail Highway from its junction Chicago Wash to Highway 127, east of Highway 127 between its junctions with Old Spanish Trail Highway and Highway 178 shall be under Stage III Restrictions.

As of October 3, 2018 at 00:01 AM, all BLM-managed public lands within the California Desert District not in Stage III restrictions as identified above shall be under Stage I Restrictions.

Exhibit A is the map of the Fire Restriction areas.

Seasonal Fire Restrictions

Stage Restriction definitions:

1. **Stage I Restrictions** – Campfires, barbecues and gas stoves are allowed with a valid California Campfire Permit. Smoking is also allowed on such lands.

2. **Stage II Restrictions** – Setting, building, maintaining, attending, or using open fire of any kind, except campfires within approved fire pits and grills provided for in developed recreation sites is prohibited. Controlled flame devices such as portable stoves and lanterns with *shut-off* valves, using gas, jellied petroleum, or pressurized liquid fuel are allowed and require a valid California Campfire Permit. Smoking is only permitted within an area that is clear of any vegetation for a minimum of 5 feet in all directions.
3. **Stage III Restrictions** – Setting, building, maintaining, attending, or using open fire of any kind is prohibited. Controlled flame devices such as portable stoves and lanterns with *shut-off* valves, using gas, jellied petroleum, or pressurized liquid fuel are allowed with a valid California Campfire Permit. Smoking is only permitted within enclosed vehicles or camp trailers.

Please check with local field offices for additional area restrictions.

Title 43 CFR §9212.4 provides that any person who knowingly and willfully violates the regulations of 9212.1 of this title shall upon conviction, be subject to a fine of not more than \$1000 or to imprisonment of not more than 12 months or both. These prohibitions are in addition to the general prohibitions in **Title 43 CFR §9212.1**.

Year-round Fire Restrictions

The following restrictions shall apply to all public lands within the California Desert District regardless of stage restrictions and are applicable year-round. These prohibitions are in addition to the general prohibitions in **Title 43 CFR §9212.1**. They include:

Fireworks, Ammunition and Targets

Prohibited acts:

1. The possession or use of all fireworks, including “safe and sane”, on all public lands of the California Desert District.
2. The possession or use of any steel jacketed or steel core ammunition of any caliber. This would include handgun, rifle and shotgun ammunition.
3. The possession or use of any tracer and/or incendiary ammunition of any caliber.
4. The possession or use of any explosive or incendiary device, including chemical devices.
5. The possession or use of any pyrotechnic device not listed under 2-4 above. This includes, but is not limited to, such devices as exploding or chemically reactive targets or items that are detonated when struck by a projectile such as a bullet from a firearm.
6. The use of Chinese lanterns, floating sky lanterns, fire balloons, or acetylene balloons.
7. During the issuance of Red Flag Warnings and Fire Weather Watches, as determined by the National Weather Service (NWS), all recreational shooting and use of campfires, regardless of stage restrictions, will be temporarily suspended to reduce the potential of unintended wildland fire ignitions for the period of the event.

Pyrotechnic device: Means any device manufactured or used to produce a visible or audible effect by combustion, deflagration, or detonation.

Explosive, chemical, or incendiary device: Includes, but is not limited, to an incendiary bomb, grenade, fire bomb, chemical bomb, or similar device, which consists of or includes a breakable or non-breakable container including a flammable liquid or compound, or any breakable container which consists of, or includes a chemical mixture that explodes with fire or force and can be carried, thrown, placed, or shot with a firearm.

Chinese lantern: A decorative collapsible lantern of thin, brightly colored paper, that once a heat source is ignited, is intended to slowly float away like a hot air balloon.

Steel Jacketed: Having a steel ferrous jacket over a non-ferrous soft metal core of the bullet.

Steel Core: The core or center of the bullet is steel or other ferrous metal composition.

Tracer: A bullet that contains a chemical tracer and leaves a path of light, smoke, or fire.

It is recommended that all target shooters carry a fire extinguisher and/or shovel in the event of an unintentional fire start.

Burning

No person shall burn, ignite or cause to burn any tire, petroleum product, wires, magnesium, waste, or any other hazardous or explosive materials.

Spark Arresters

All off-road vehicles being operated on public lands must be equipped with a properly installed spark arrester pursuant to 43 CFR §8343.1(c) and California Vehicle Code 38366(a). The spark arrester must meet either the U.S. Department of Agriculture, Forest Service standard 5100-1a or the 80 percent efficiency level standard determined by the Society of Automotive Engineers (SAEs) recommended practices J335 or J350.

California Campfire Permits

California Campfire Permits are required on all BLM-managed lands year round and may be obtained, free of charge, at any local field office, fire or law enforcement patrol personnel, or at any BLM Fire Station. They may also be found online at: www.preventwildfireca.org/CampfirePermits. Campfire Permits are required during Stage I, II, and III Restrictions. See Seasonal Fire Restrictions above for California Campfire Permit restrictions during the various stages.

Exemptions

Pursuant to **Title 43, CFR §9212.2**, the following persons are exempt from this order:

- a. Persons with a valid permit from BLM or contract with the BLM that specifically authorizes the otherwise prohibited act.

- b. Any Federal, State, or local officer, or member of an organized rescue or fire fighting force in the performance of an official duty.

For information regarding the restrictions, call the nearest BLM field office Monday to Friday 8:00 AM to 4:30 PM.

California Desert District	(951) 697-5200	Ridgecrest	(760) 384-5400
Barstow	(760) 252-6000	Needles	(760) 326-7000
Palm Springs	(760) 833-7100	El Centro	(760) 337-4400

Map of current restrictions is available at:

www.arcgis.com/apps/View/index.html?appid=a330d77fe184408ab7c3b9a8035c37fb

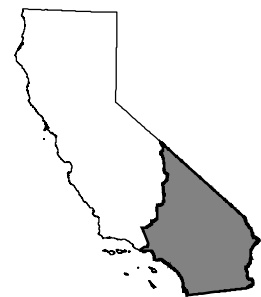
It is the responsibility of the public to understand the Fire Prevention Orders. They are available online at: www.blm.gov/programs/public-safety-and-fire/fire-and-aviation/regional-info/california/fire-restrictions. Fire weather forecasts are available through the National Weather Service at: <https://www.weather.gov/fire/>

 9/28/2018

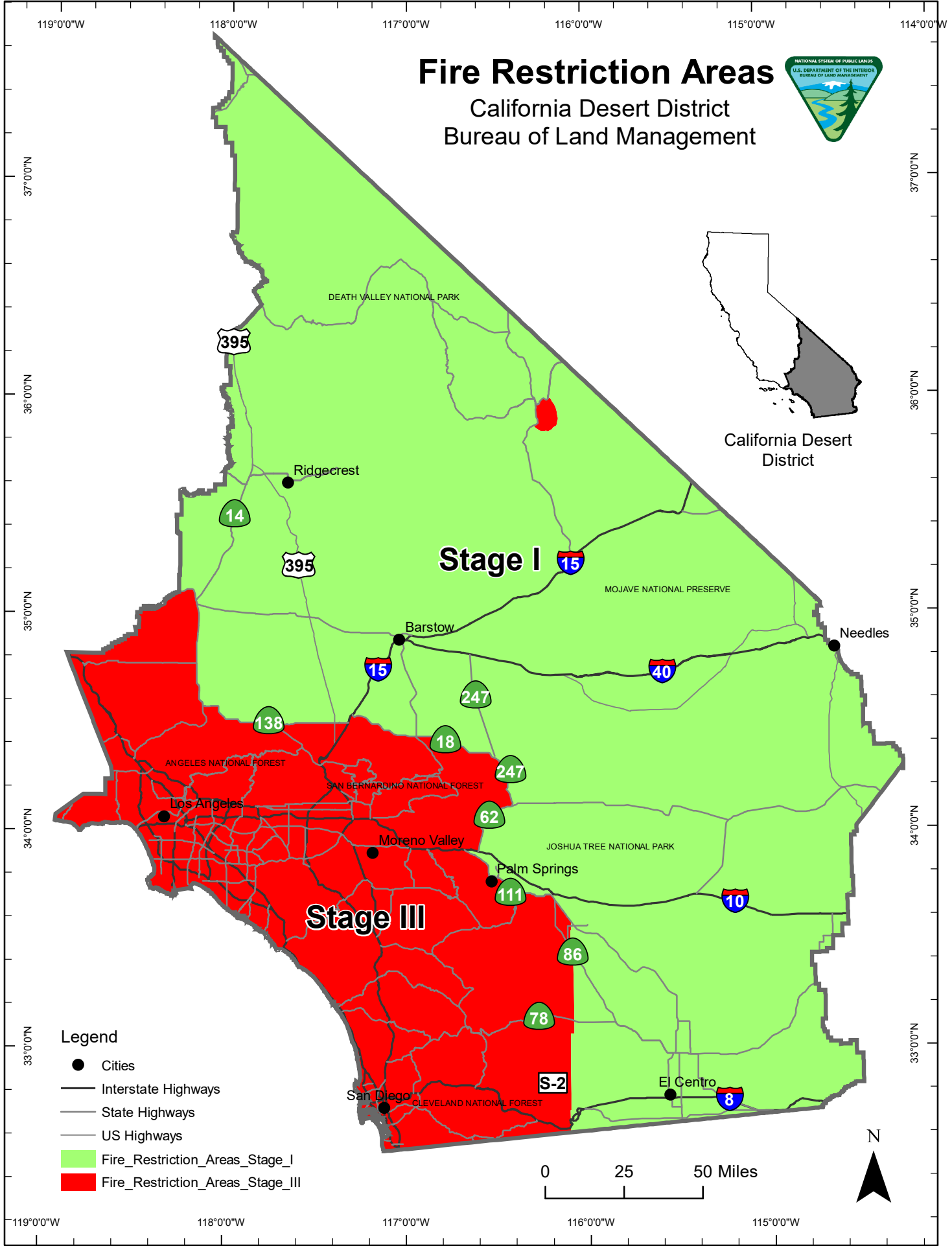
Beth Ransel
District Manager

Fire Restriction Areas

California Desert District
Bureau of Land Management



California Desert District



Legend

- Cities
- Interstate Highways
- State Highways
- US Highways
- Fire_Restriction_Areas_Stage_I
- Fire_Restriction_Areas_Stage_III

