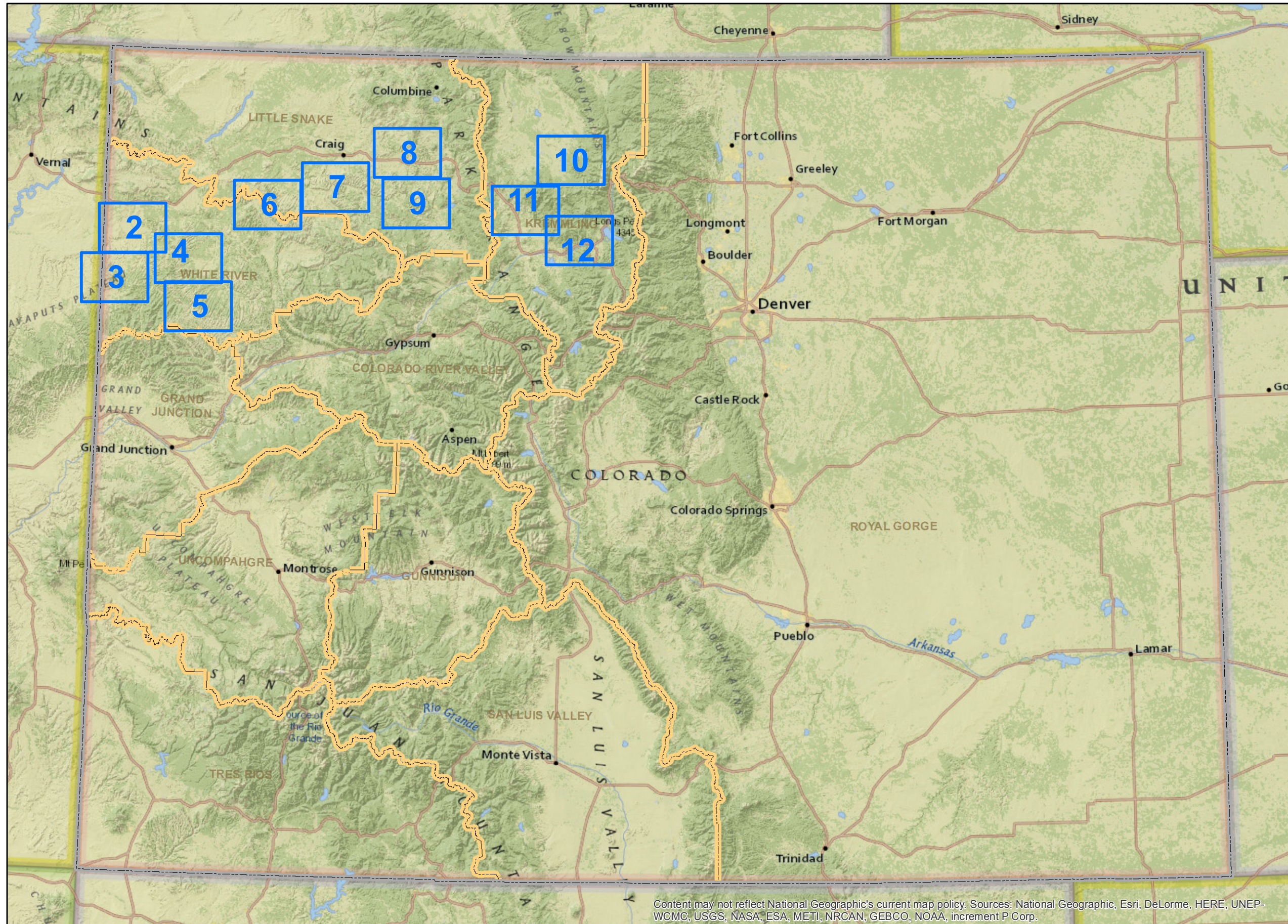





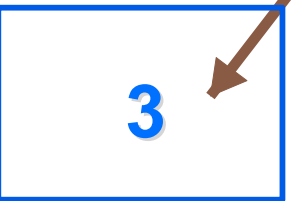
BLM Competitive Oil and Gas Lease Sale May, 2017





Legend

-  Selectable Map Pages
-  State Boundary
-  BLM Field Office Boundaries

Please click on the Close Up Map Pages to see more detail.



  3 / 11

Click on the Page Navigation Tools to return to this Index map on Page 1.

Content may not reflect National Geographic's current map policy. Sources: National Geographic, Esri, DeLorme, HERE, UNEP-WCMC, USGS, NASA, ESA, METI, NRCAN, GEBCO, NOAA, increment P Corp.



NOTE TO MAP USERS
No warrant is made by the Bureau of Land Management as to the accuracy, reliability, or completeness of the data layers shown on this map. The official land records should be checked for the current status on any specific tract of land.

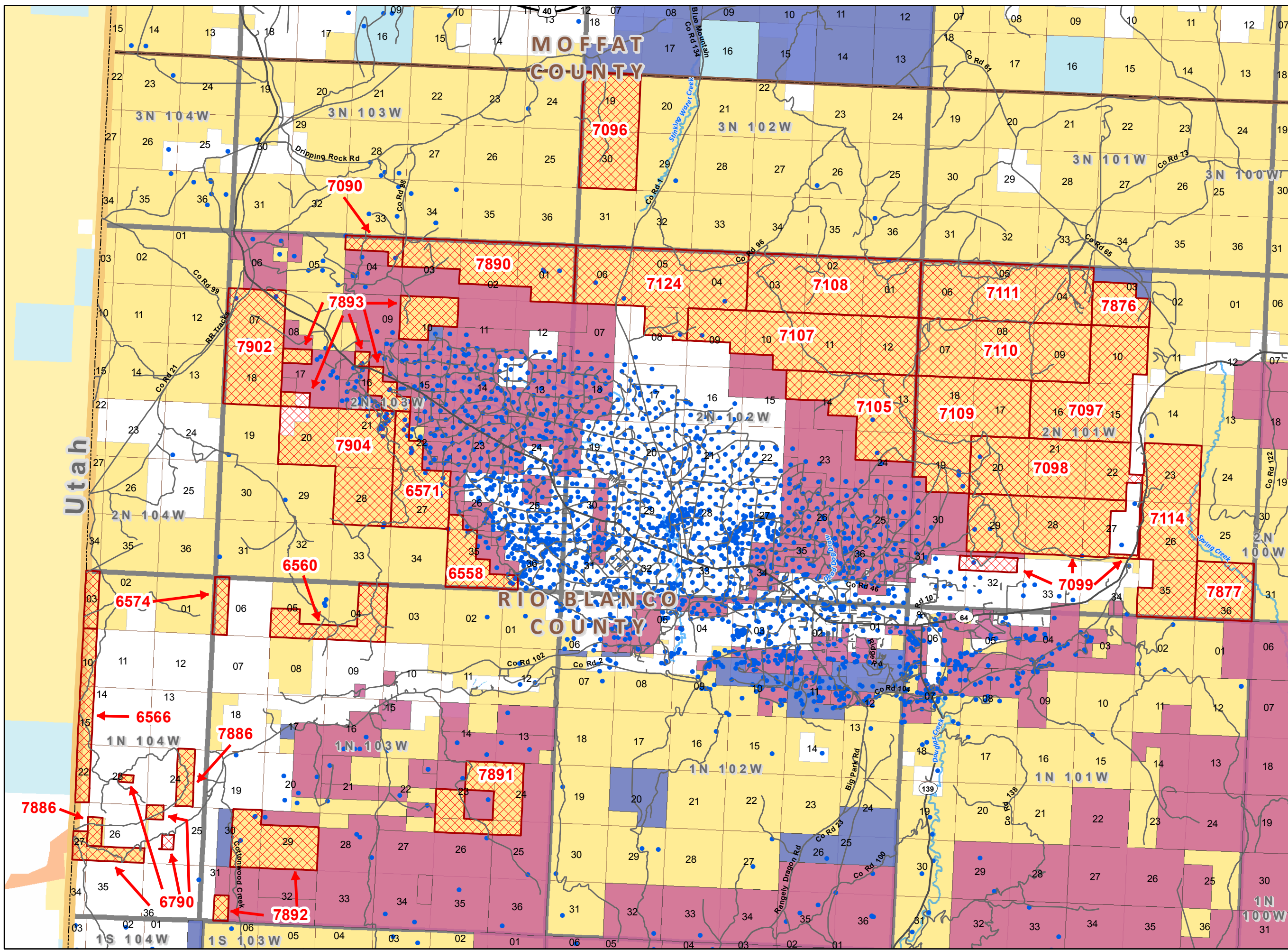
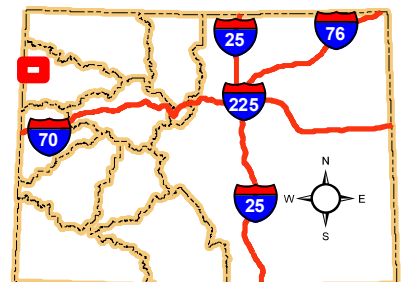
Legend

- BLM Field Office Areas Boundaries
- Lease Sale Parcels**
- Oil & Gas Sale Status**
- Sale
- COGCC Oil and Gas Well Locations
- Oil and Gas Leases**
- Non-Producing Leases
- Producing Leases
- Township & Range
- Sections
- Bureau of Land Management
- Private
- State
- Lakes and Reservoirs
- County Boundaries
- Streams
- U.S. Highway
- State Highway
- County & Main Roads
- Other Cities and Towns

0 0.5 1 2 Miles

**Map Page Location
Page Number 2**

WHITE RIVER FIELD OFFICE





NOTE TO MAP USERS
No warrantee is made by the Bureau of Land Management as to the accuracy, reliability, or completeness of the data layers shown on this map. The official land records should be checked for the current status on any specific tract of land.

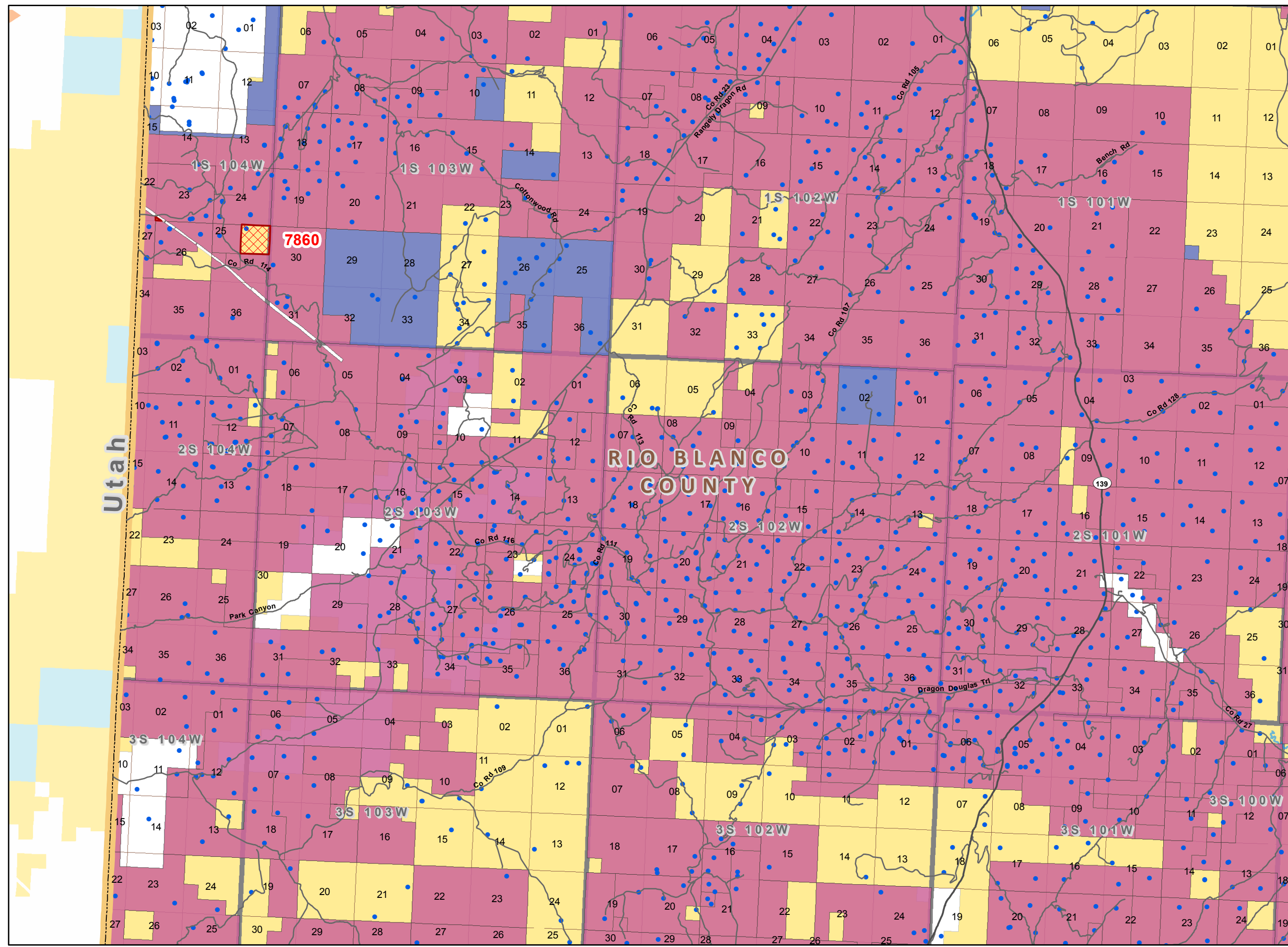
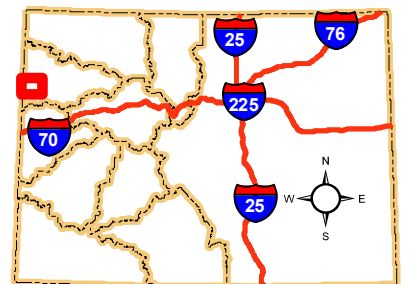
Legend

- BLM Field Office Areas Boundaries
- Lease Sale Parcels**
- Oil & Gas Sale Status**
- Sale
- COGCC Oil and Gas Well Locations
- Oil and Gas Leases**
- Non-Producing Leases
- Producing Leases
- Township & Range
- Sections
- Bureau of Land Management
- Private
- County Boundaries
- Streams
- State Highway
- County & Main Roads

0 0.5 1 2 Miles

**Map Page Location
Page Number 3**

WHITE RIVER FIELD OFFICE



Utah

**RIO BLANCO
COUNTY**

**Bureau of Land Management
Competitive Oil & Gas Lease Sale
May, 2017**



NOTE TO MAP USERS
No warrantee is made by the Bureau of Land Management as to the accuracy, reliability, or completeness of the data layers shown on this map. The official land records should be checked for the current status on any specific tract of land.

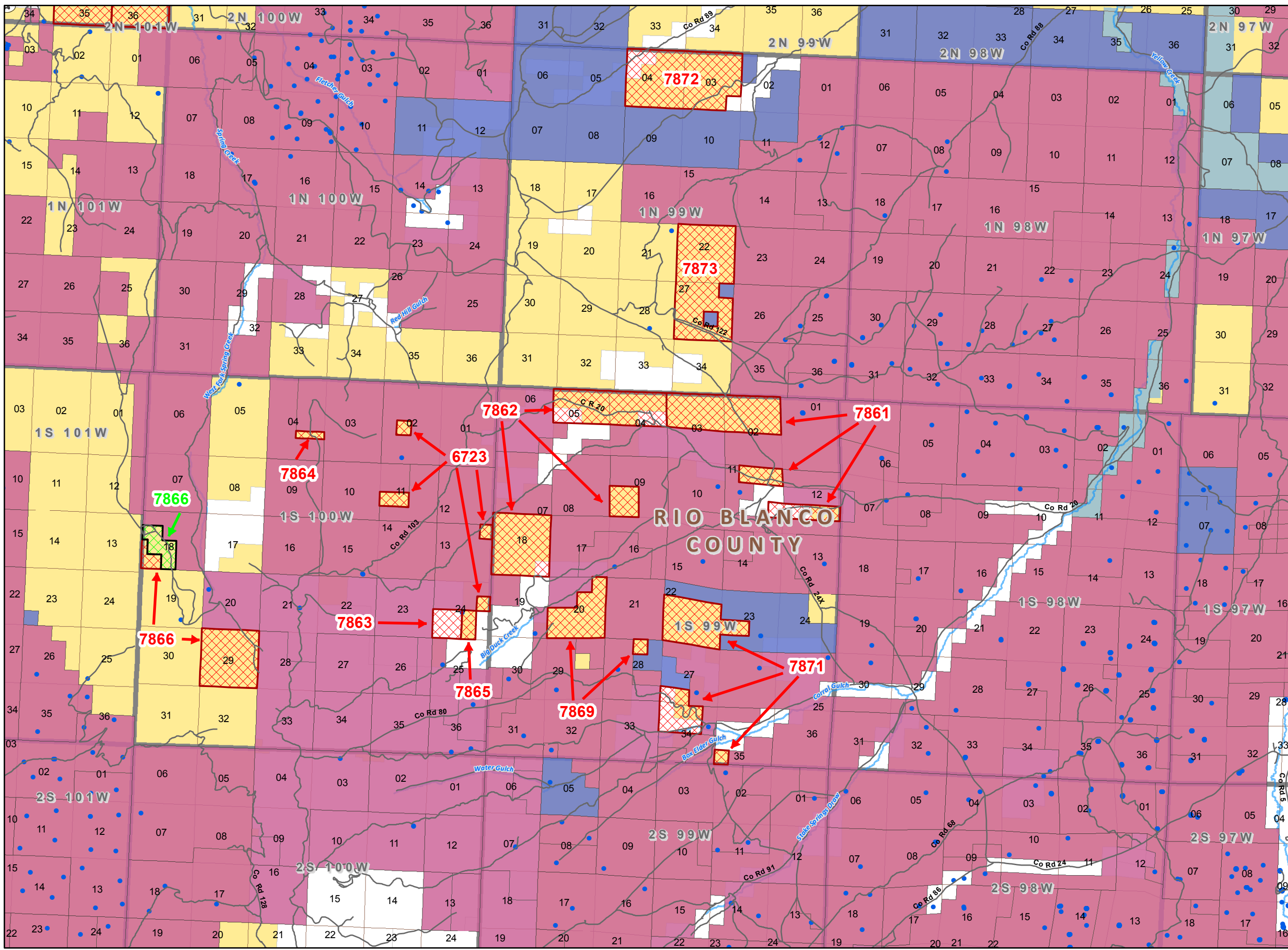
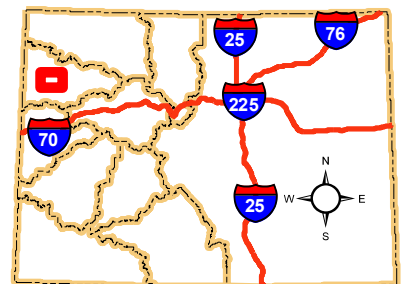
Legend

- BLM Field Office Areas Boundaries
- Lease Sale Parcels**
- Oil & Gas Sale Status**
- Sale
- Withdrawn
- COGCC Oil and Gas Well Locations
- Oil and Gas Leases**
- Non-Producing Leases
- Producing Leases
- Township & Range
- Sections
- Bureau of Land Management
- Private
- State, County, City; Areas
- County Boundaries
- Streams
- State Highway
- County & Main Roads



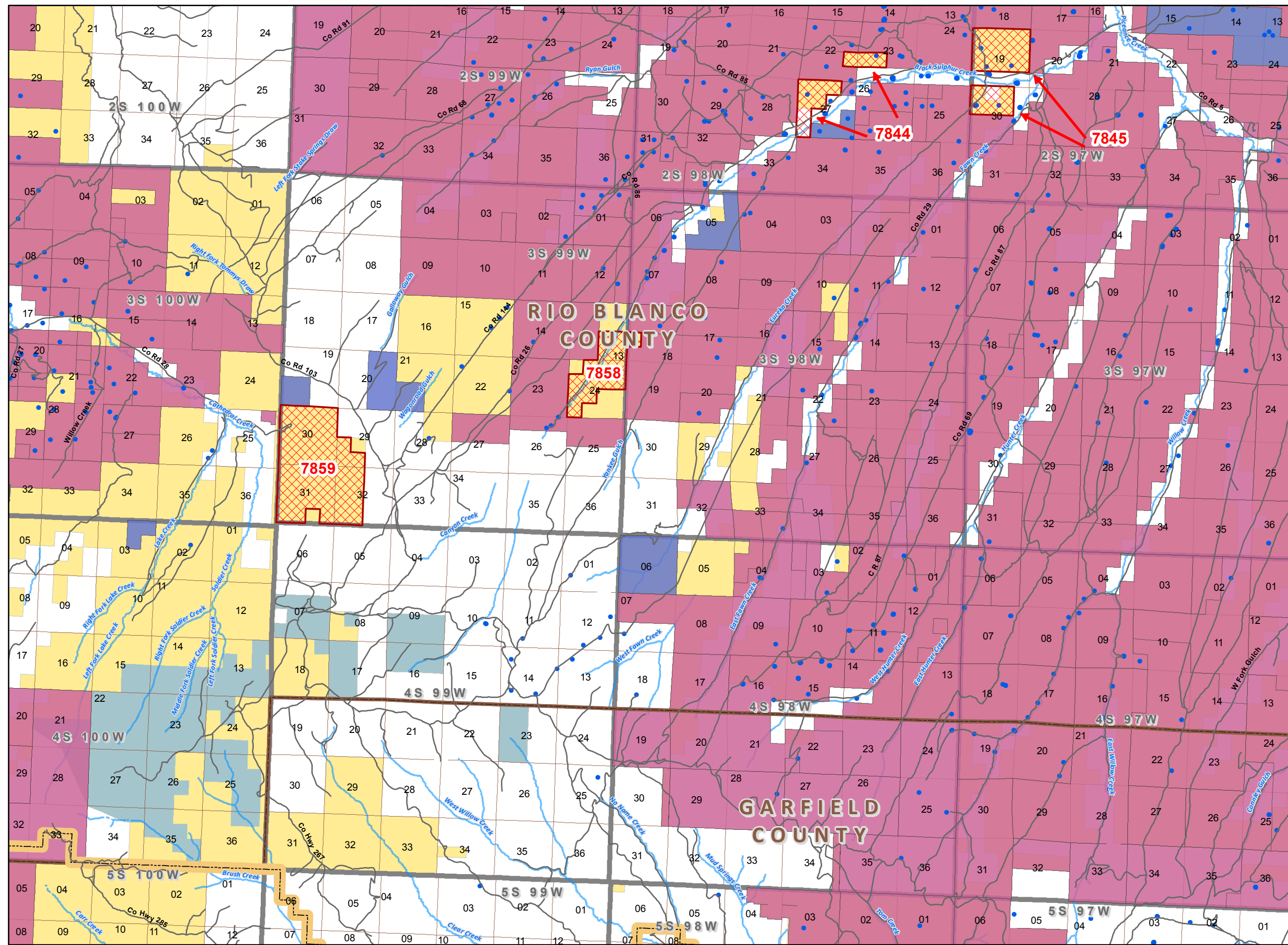
**Map Page Location
Page Number 4**

WHITE RIVER FIELD OFFICE



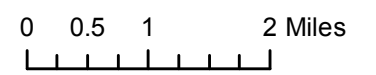


NOTE TO MAP USERS
No warrant is made by the Bureau of Land Management as to the accuracy, reliability, or completeness of the data layers shown on this map. The official land records should be checked for the current status on any specific tract of land.



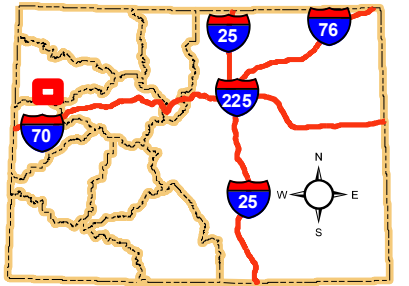
Legend

- BLM Field Office Areas Boundaries
- Lease Sale Parcels**
- Oil & Gas Sale Status**
- Sale
- COGCC Oil and Gas Well Locations
- Oil and Gas Leases**
- Non-Producing Leases
- Producing Leases
- Township & Range
- Sections
- Bureau of Land Management
- Private
- State, County, City, Areas
- Lakes and Reservoirs
- County Boundaries
- Streams
- County & Main Roads



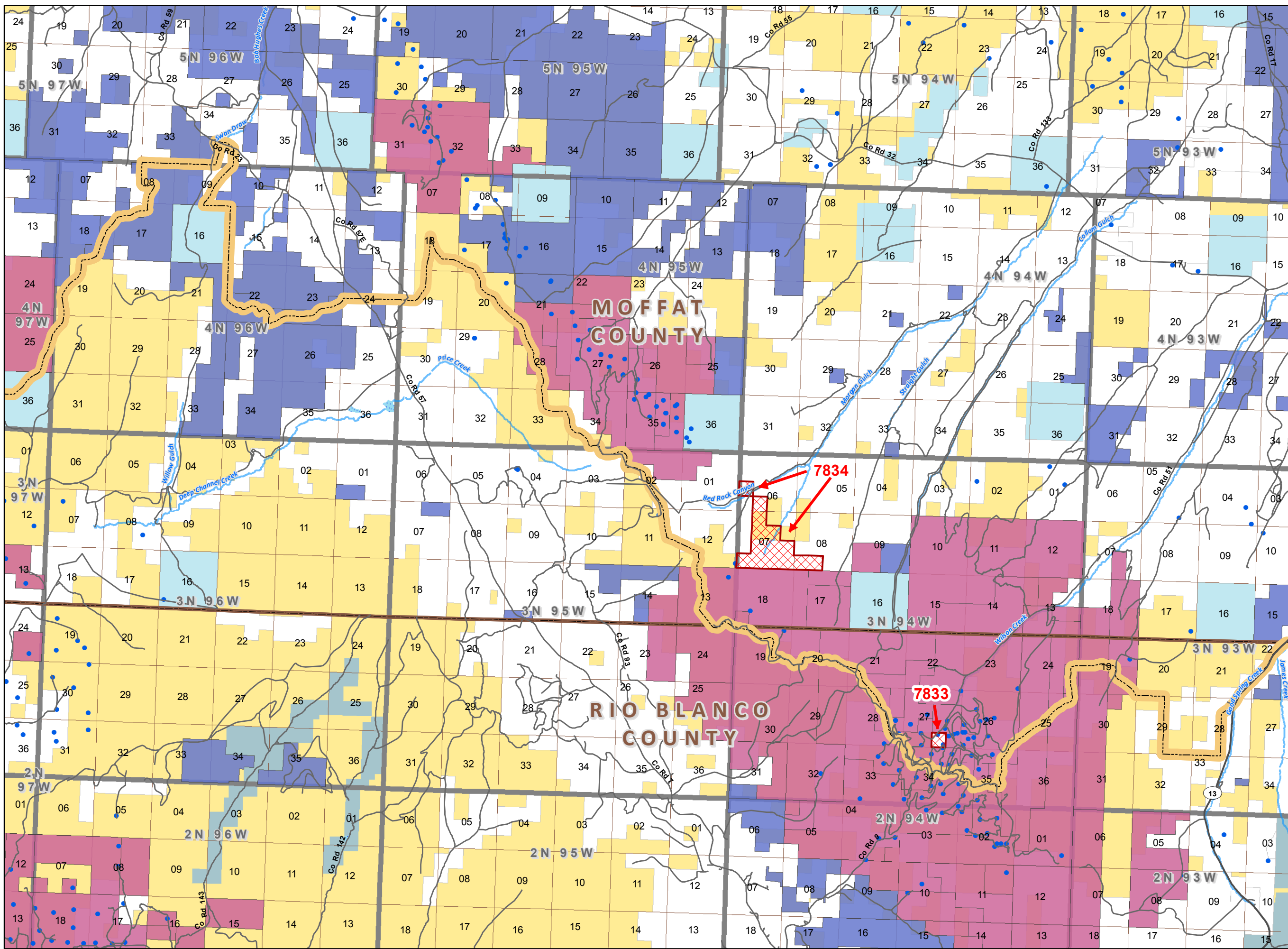
Map Page Location
Page Number 5

WHITE RIVER FIELD OFFICE





NOTE TO MAP USERS
No warrant is made by the Bureau of Land Management as to the accuracy, reliability, or completeness of the data layers shown on this map. The official land records should be checked for the current status on any specific tract of land.



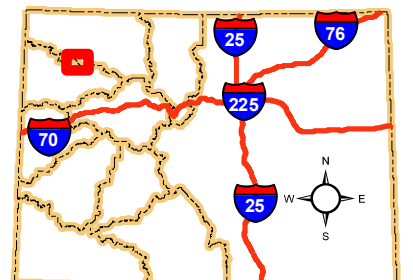
Legend

- BLM Field Office Areas Boundaries
- Lease Sale Parcels**
- Oil & Gas Sale Status**
- Sale
- COGCC Oil and Gas Well Locations
- Oil and Gas Leases**
- Non-Producing Leases
- Producing Leases
- Township & Range
- Sections
- Bureau of Land Management
- Private
- State
- State, County, City; Areas
- Lakes and Reservoirs
- County Boundaries
- Streams
- State Highway
- County & Main Roads



**Map Page Location
Page Number 6**

WHITE RIVER FIELD OFFICE



**Bureau of Land Management
Competitive Oil & Gas Lease Sale
May, 2017**



NOTE TO MAP USERS
No warrant is made by the Bureau of Land Management as to the accuracy, reliability, or completeness of the data layers shown on this map. The official land records should be checked for the current status on any specific tract of land.

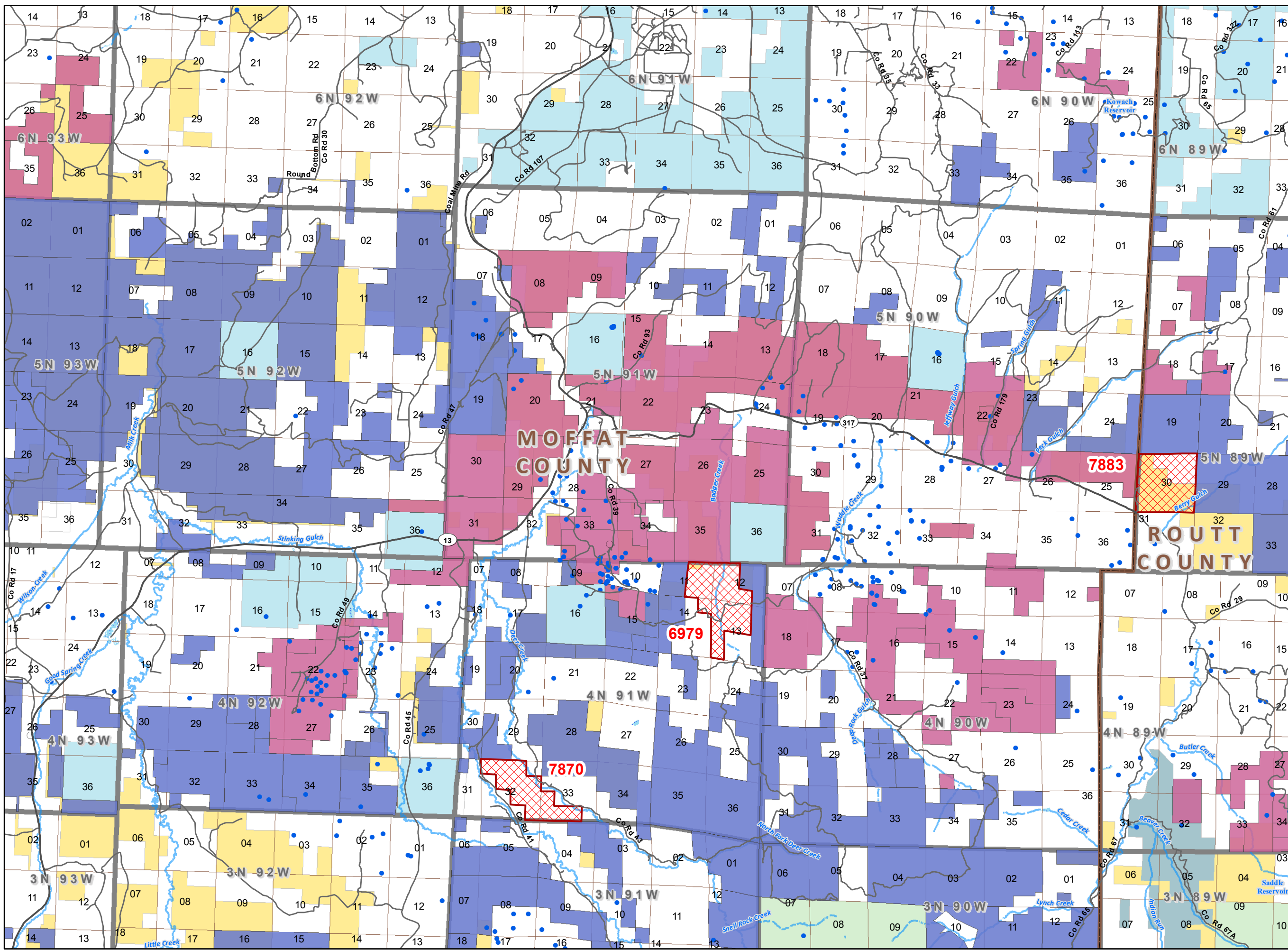
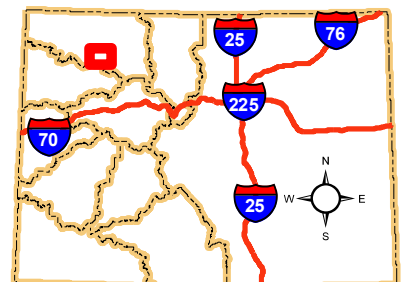
Legend

- BLM Field Office Areas Boundaries
- Lease Sale Parcels**
- Oil & Gas Sale Status**
- Sale
- COGCC Oil and Gas Well Locations
- Oil and Gas Leases**
- Non-Producing Leases
- Producing Leases
- Township & Range
- Sections
- Bureau of Land Management
- State
- State, County, City; Areas
- US Forest Service
- Lakes and Reservoirs
- County Boundaries
- Streams
- State Highway
- County & Main Roads
- Other Cities and Towns

0 0.5 1 2 Miles

**Map Page Location
Page Number 7**

LITTLE SNAKE FIELD OFFICE



**Bureau of Land Management
Competitive Oil & Gas Lease Sale
May, 2017**



NOTE TO MAP USERS
No warrantee is made by the Bureau of Land Management as to the accuracy, reliability, or completeness of the data layers shown on this map. The official land records should be checked for the current status on any specific tract of land.

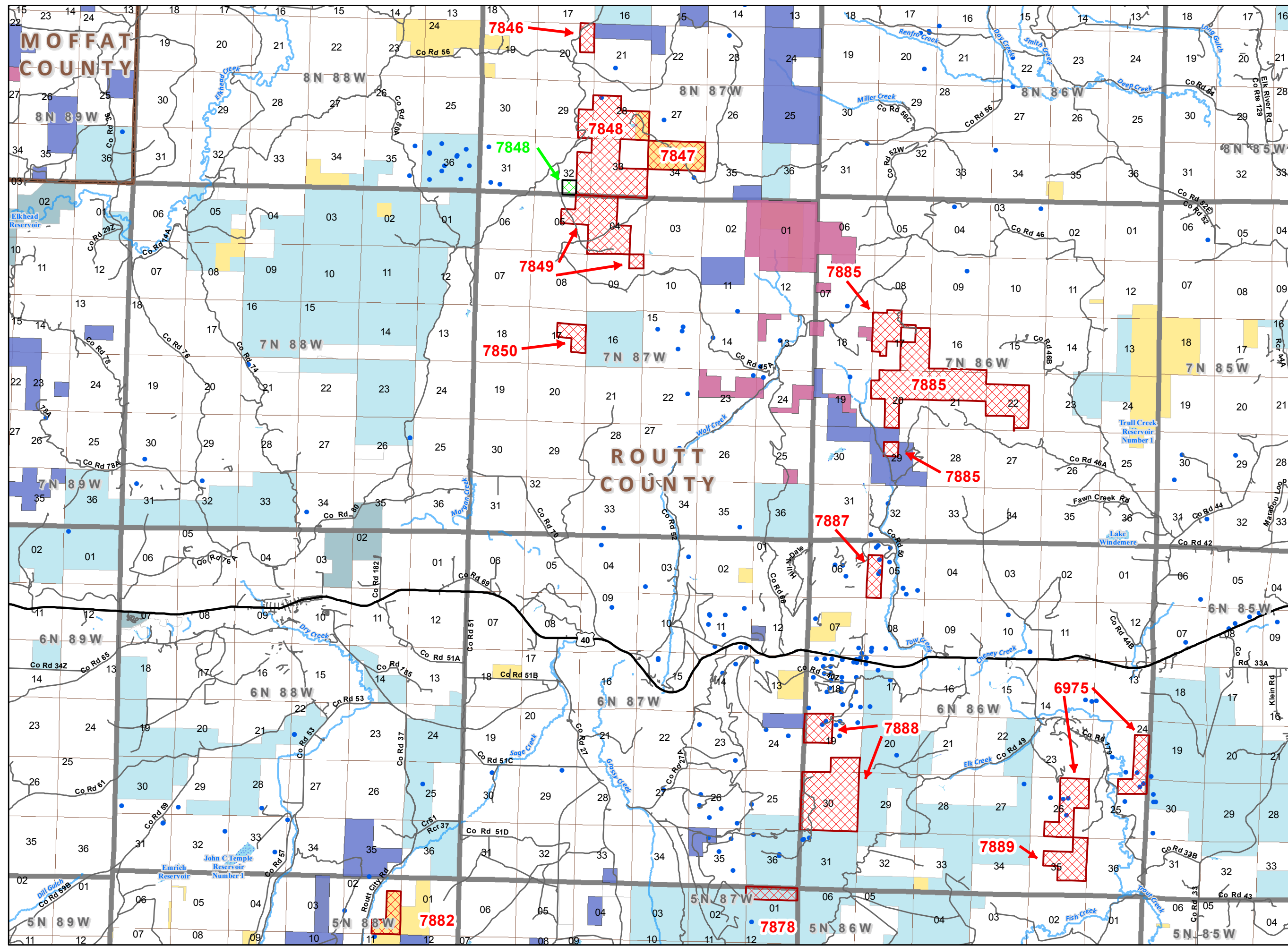
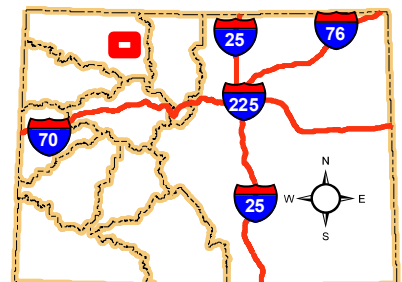
Legend

- BLM Field Office Areas Boundaries
- Lease Sale Parcels**
- Oil & Gas Sale Status**
- Sale
- Withdrawn
- COGCC Oil and Gas Well Locations
- Oil and Gas Leases**
- Non-Producing Leases
- Producing Leases
- Township & Range
- Sections
- Bureau of Land Management
- Private
- State
- State, County, City; Areas
- Lakes and Reservoirs
- County Boundaries
- Streams
- U.S. Highway
- County & Main Roads
- Other Cities and Towns

0 0.5 1 2 Miles

**Map Page Location
Page Number 8**

LITTLE SNAKE FIELD OFFICE





NOTE TO MAP USERS
No warrant is made by the Bureau of Land Management as to the accuracy, reliability, or completeness of the data layers shown on this map. The official land records should be checked for the current status on any specific tract of land.

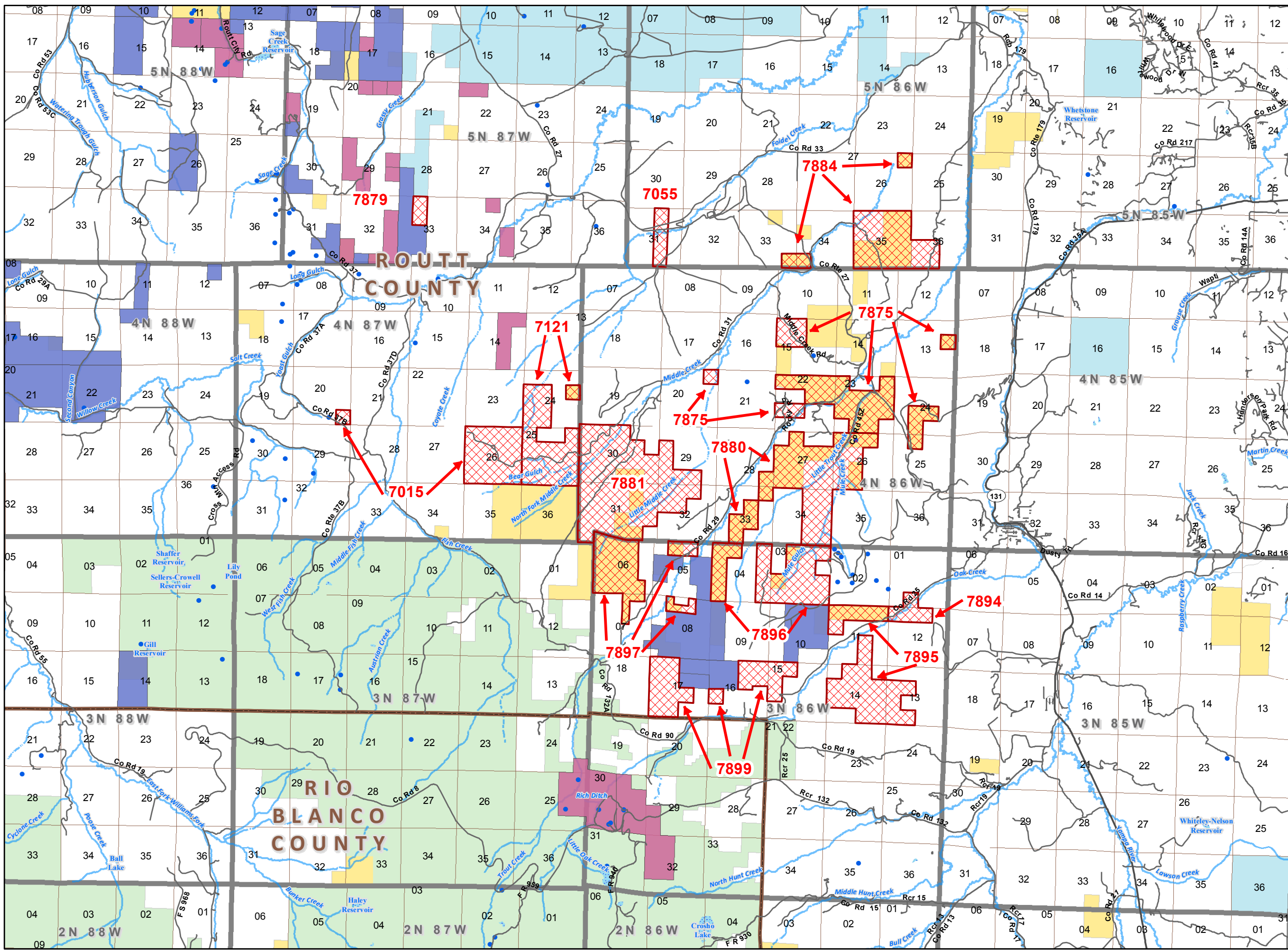
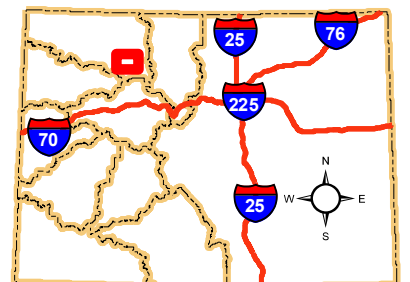
Legend

- BLM Field Office Areas Boundaries
- Lease Sale Parcels**
- Oil & Gas Sale Status**
- Sale
- COGCC Oil and Gas Well Locations
- Oil and Gas Leases**
- Non-Producing Leases
- Producing Leases
- Township & Range
- Sections
- Bureau of Land Management
- Private
- State
- State, County, City; Areas
- US Forest Service
- Lakes and Reservoirs
- County Boundaries
- Streams
- State Highway
- County & Main Roads
- Other Cities and Towns

0 0.5 1 2 Miles

**Map Page Location
Page Number 9**

LITTLE SNAKE FIELD OFFICE



**Bureau of Land Management
Competitive Oil & Gas Lease Sale
May, 2017**



NOTE TO MAP USERS
No warrantee is made by the Bureau of Land Management as to the accuracy, reliability, or completeness of the data layers shown on this map. The official land records should be checked for the current status on any specific tract of land.

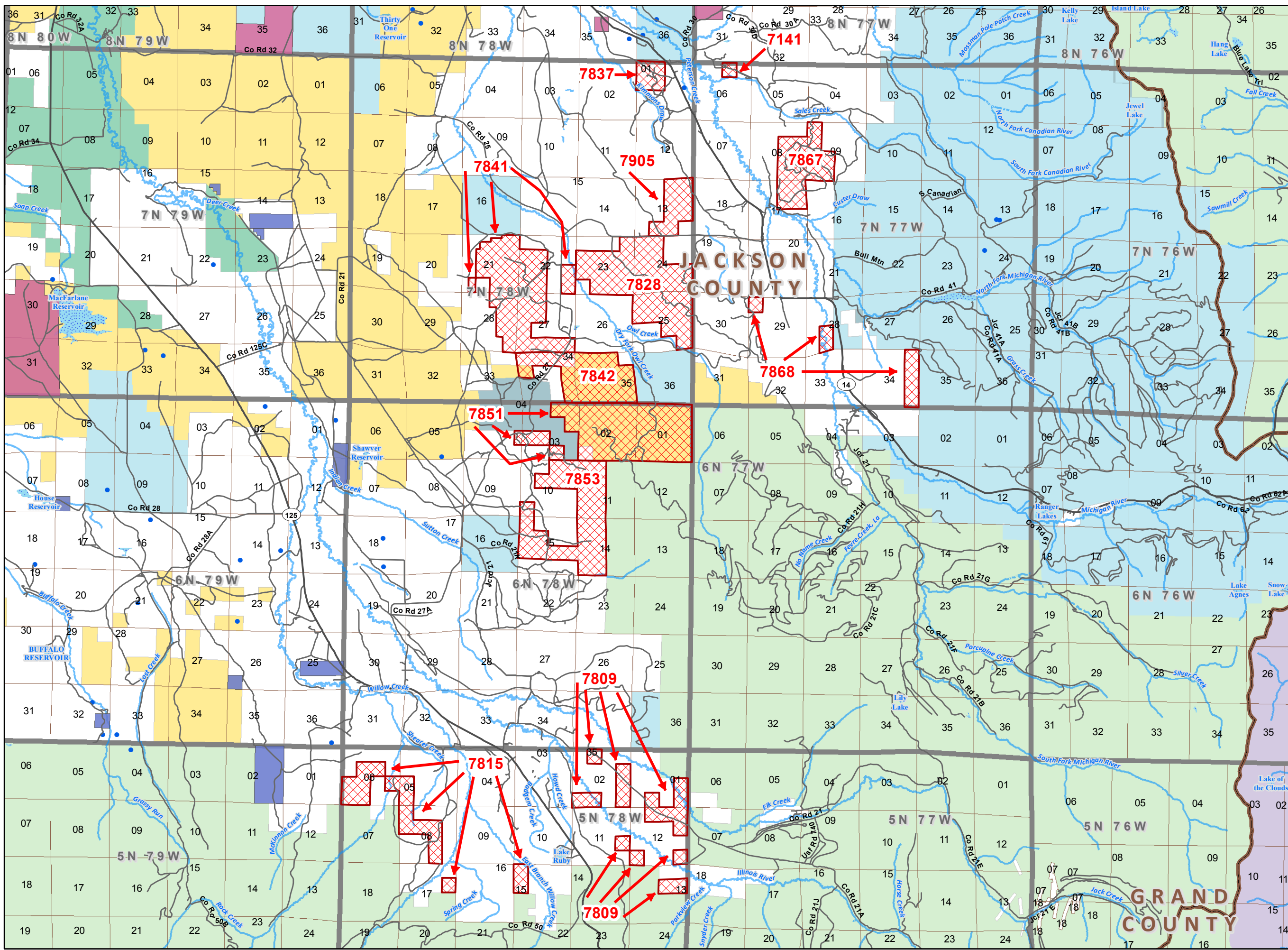
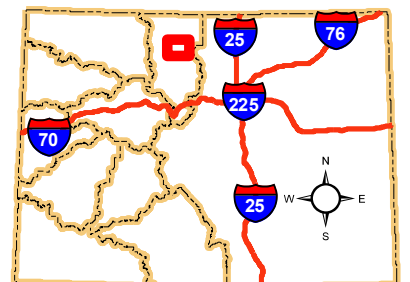
Legend

- BLM Field Office Areas Boundaries
- Lease Sale Parcels**
- Oil & Gas Sale Status**
- Sale
- COGCC Oil and Gas Well Locations
- Oil and Gas Leases**
- Non-Producing Leases
- Producing Leases
- Township & Range
- Sections
- Bureau of Land Management
- National Park Service
- Private
- State
- State, County, City; Areas
- US Fish and Wildlife Service
- US Forest Service
- Lakes and Reservoirs
- County Boundaries
- Streams
- State Highway
- County & Main Roads
- Other Cities and Towns



**Map Page Location
Page Number 10**

KREMMLING FIELD OFFICE





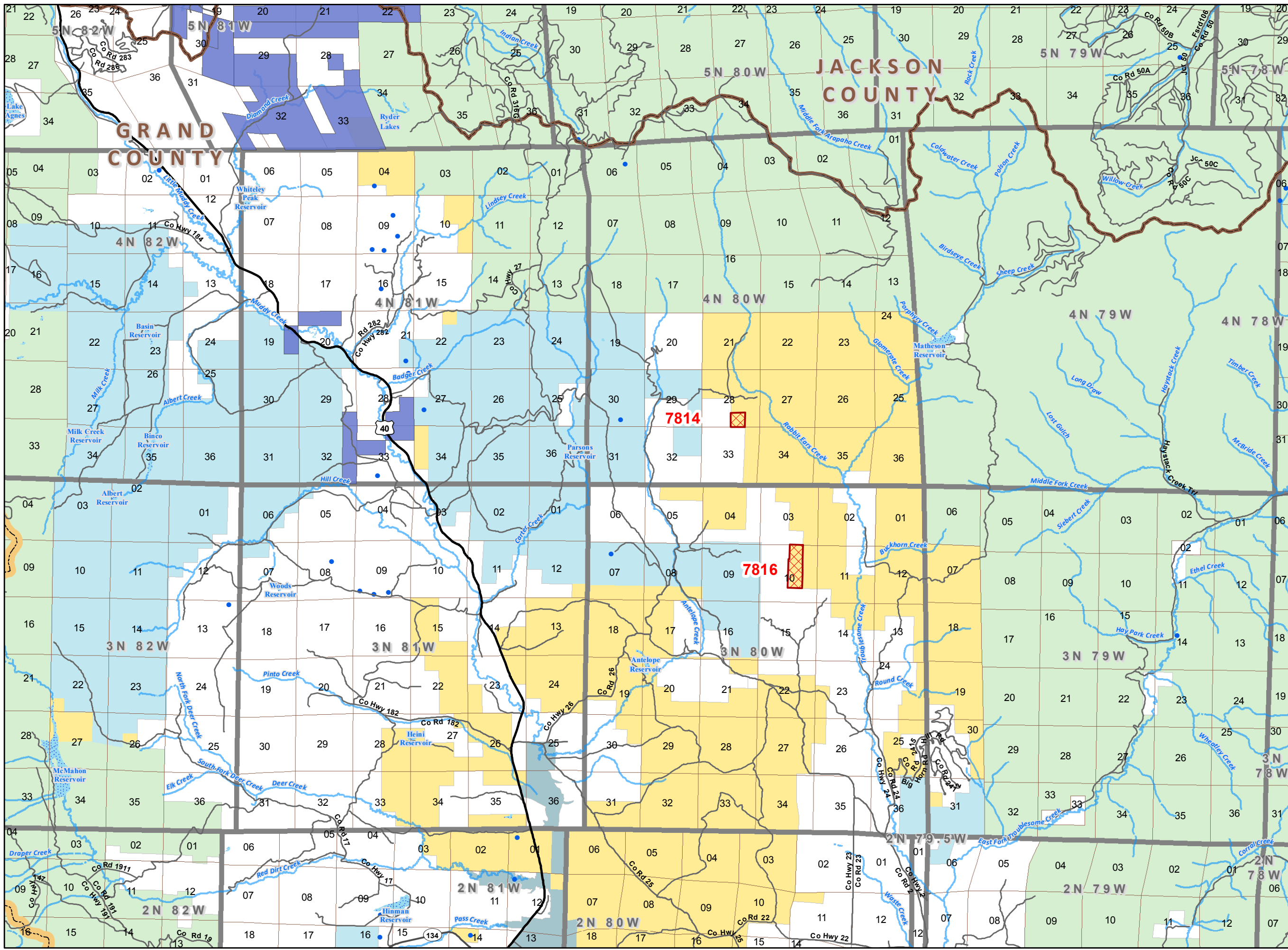
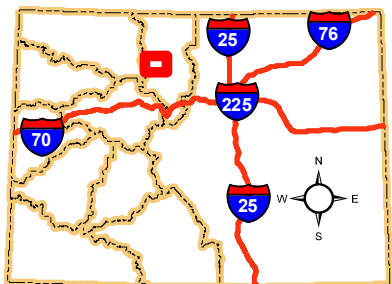
NOTE TO MAP USERS
No warrant is made by the Bureau of Land Management as to the accuracy, reliability, or completeness of the data layers shown on this map. The official land records should be checked for the current status on any specific tract of land.

- Legend**
- BLM Field Office Areas Boundaries
 - Lease Sale Parcels**
 - Oil & Gas Sale Status**
 - Sale
 - COGCC Oil and Gas Well Locations
 - Oil and Gas Leases**
 - Non-Producing Leases
 - Township & Range
 - Sections
 - Bureau of Land Management
 - Private
 - State
 - State, County, City; Areas
 - US Forest Service
 - Lakes and Reservoirs
 - County Boundaries
 - Streams
 - U.S. Highway
 - State Highway
 - County & Main Roads

0 0.5 1 2 Miles

**Map Page Location
Page Number 11**

KREMMLING FIELD OFFICE



**Bureau of Land Management
Competitive Oil & Gas Lease Sale
May, 2017**



NOTE TO MAP USERS
No warrant is made by the Bureau of Land Management as to the accuracy, reliability, or completeness of the data layers shown on this map. The official land records should be checked for the current status on any specific tract of land.

Legend

- BLM Field Office Areas Boundaries
- Lease Sale Parcels**
- Oil & Gas Sale Status**
- Sale
- COGCC Oil and Gas Well Locations
- Township & Range
- Sections
- Bureau of Land Management
- National Park Service
- Other Federal
- Private
- State
- State, County, City; Areas
- US Forest Service
- Lakes and Reservoirs
- County Boundaries
- Streams
- U.S. Highway
- State Highway
- County & Main Roads
- County Seats
- Other Cities and Towns



**Map Page Location
Page Number 12**

KREMMLING FIELD OFFICE

