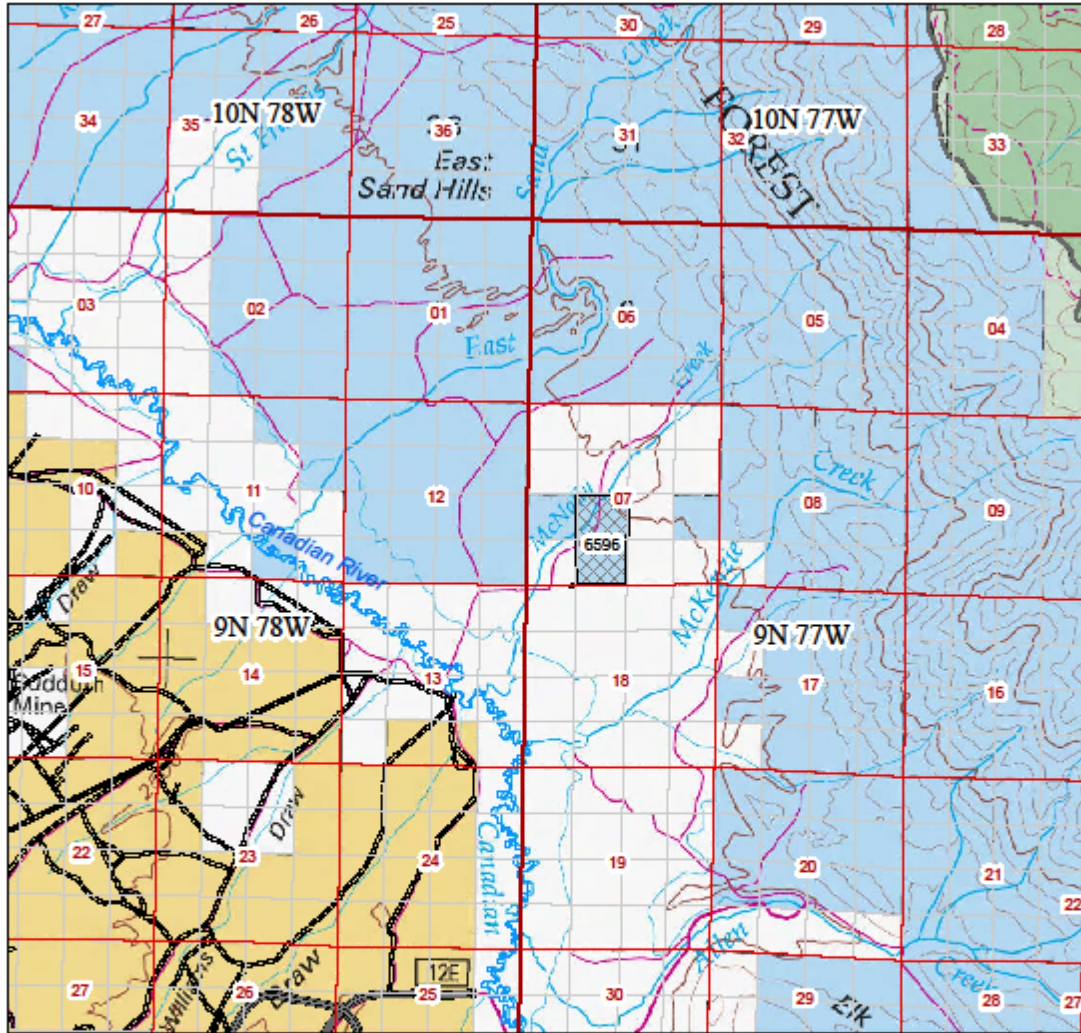


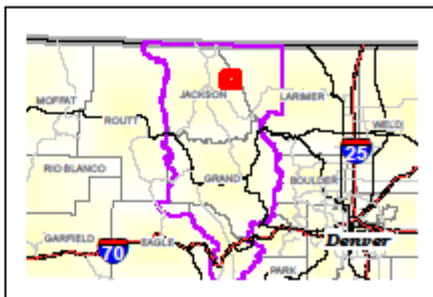
# Preferred Alternative

Bureau of Land Management - Colorado - Kremmling Field Office  
 May 2013 - Colorado Competitive Oil and Gas Lease Sale  
 Parcels within T. 9 N., R. 77 W in Jackson County



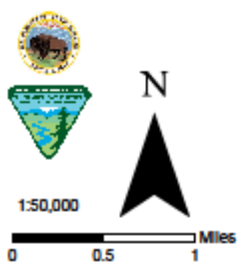
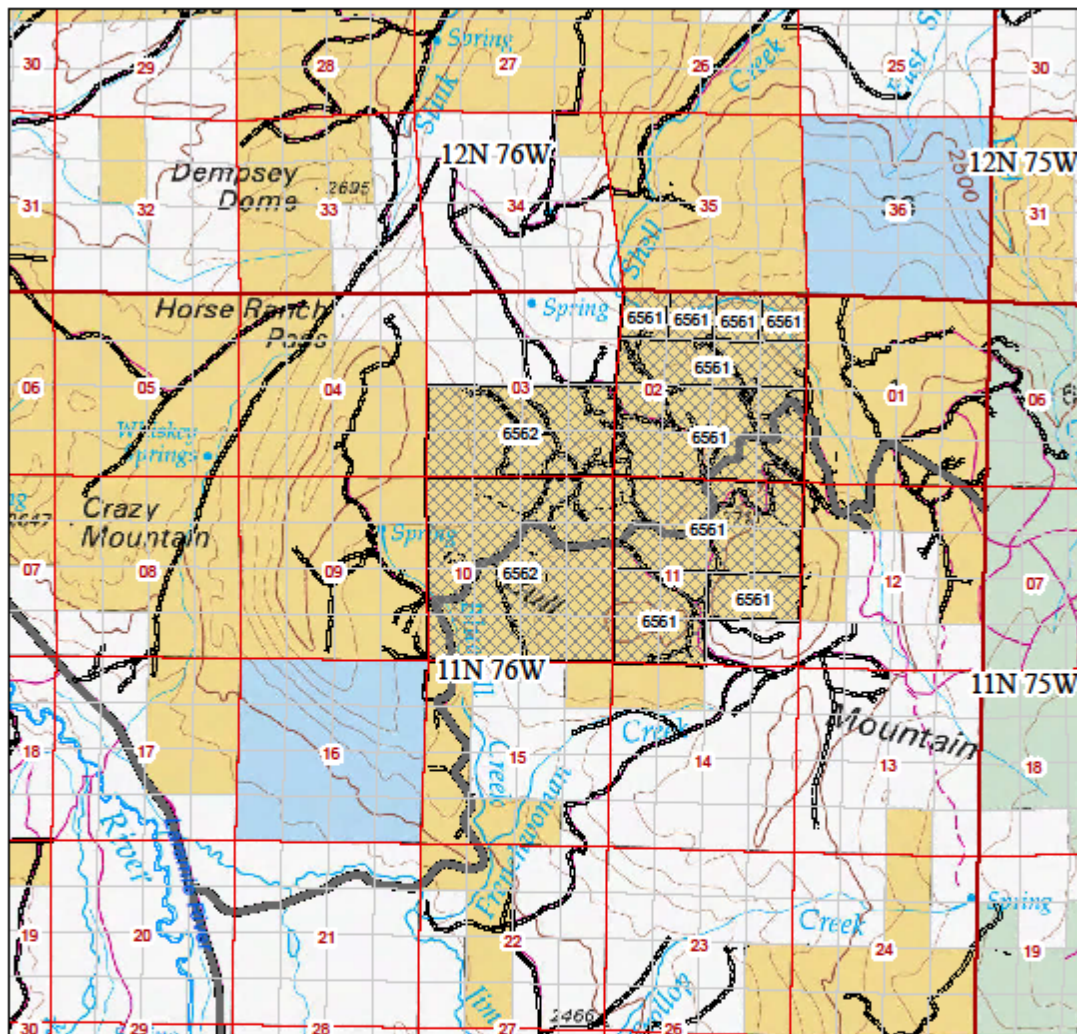
- |                |                              |
|----------------|------------------------------|
| Interstate     | Bureau of Land Management    |
| U.S. State     | State                        |
| State          | State, County, City, Area    |
| Parcels        | US Fish and Wildlife Service |
| Trail          | US Forest Service            |
| Major Road     |                              |
| Primitive Road |                              |

No warranty is made by the Bureau of Land Management as to the accuracy, reliability, or completeness of these data. For graphical purposes only and not for navigation. This map was intended to be printed in color. Last Edited: SGV, 09/14/2012.



# Preferred Alternative

Bureau of Land Management - Colorado - Kremmling Field Office  
 May 2013 - Colorado Competitive Oil and Gas Lease Sale  
 Nominated Parcels within T. 11 N., R. 76 W in Larimer County



- Interstate
  - U.S.
  - State
  - Parcels
  - Trail
  - Major Road
  - Primitive Road
  - Bureau of Land Management
  - State
  - State, County, City, Areas
  - US Fish and Wildlife Service
  - US Forest Service
- No warranty is made by the Bureau of Land Management as to the accuracy, reliability, or completeness of these data. For graphical purposes only and not for navigation. This map was intended to be printed in color. Last Edited: 9/20, 11/09/2012.

