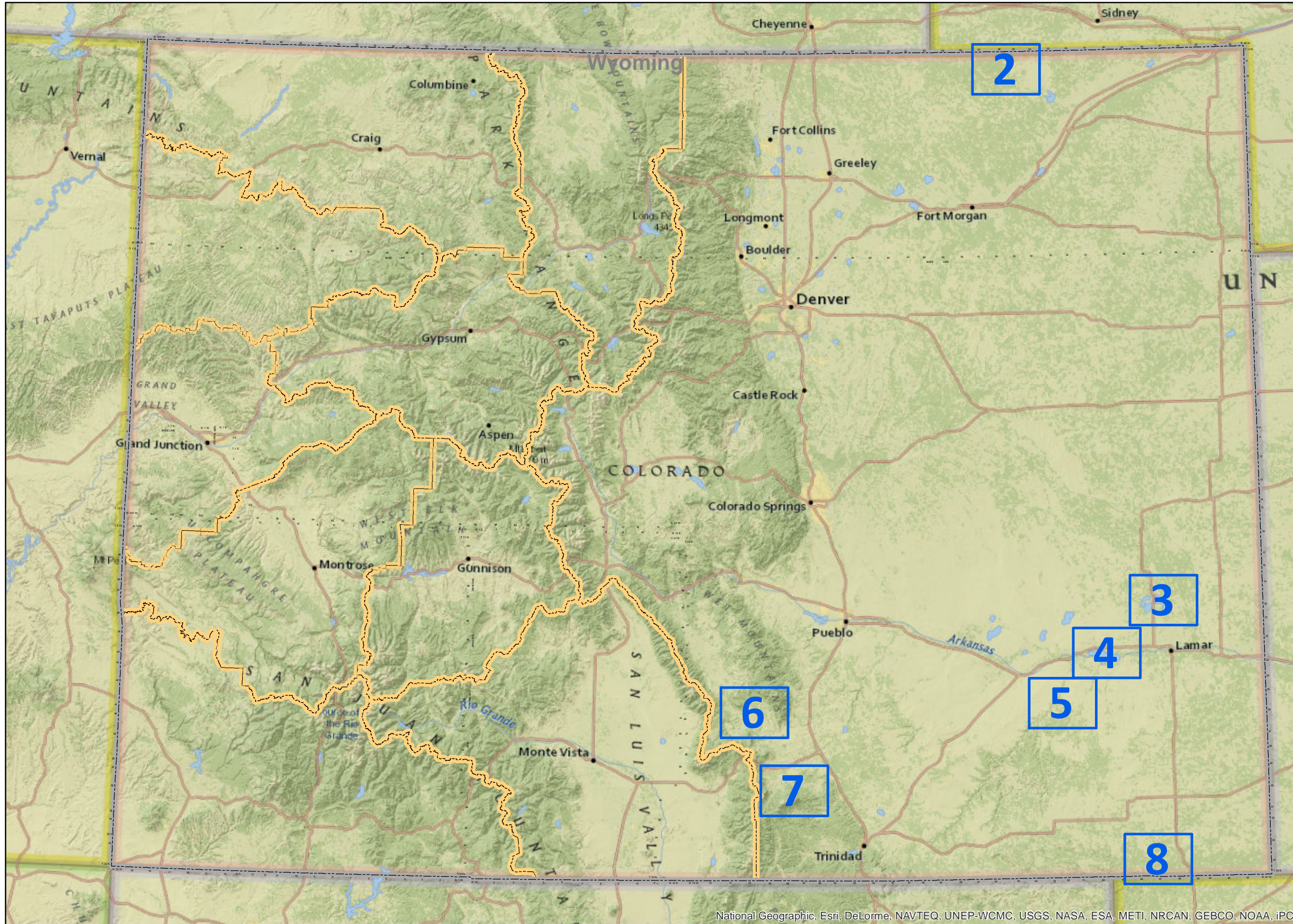


# BLM Competitive Oil and Gas Lease Sale November 14, 2013



**Legend**

- Detailed Map View Pages
- State Boundary
- BLM Field Office Boundaries

Royal Gorge Field Office (BLM/USFS)  
3028 East Main Street  
Cañon City, Colorado 81212  
719-269-8500  
FAX 719-269-8599  
Field Manager: Keith Berger

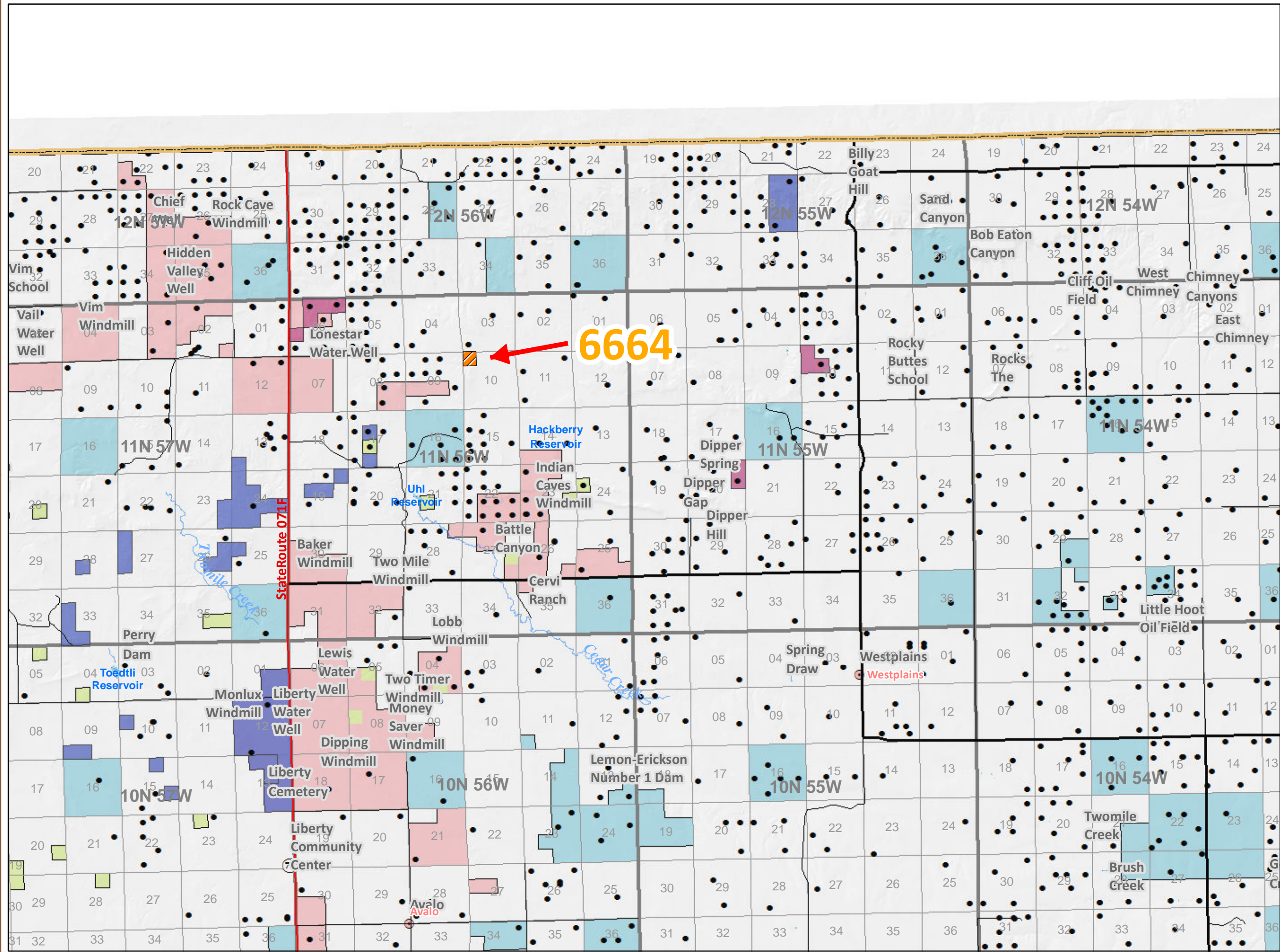
**Please click on the Close Up Map Pages to see more detail.**

**Window Help**

**Click on the Home Tool to return to this Index map on Page 1.**

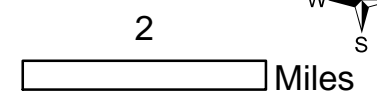


NOTE TO MAP USERS  
No warrantee is made by the Bureau of Land Management as to the accuracy, reliability, or completeness of the data layers shown on this map. The official land records should be checked for the current status on any specific tract of land.



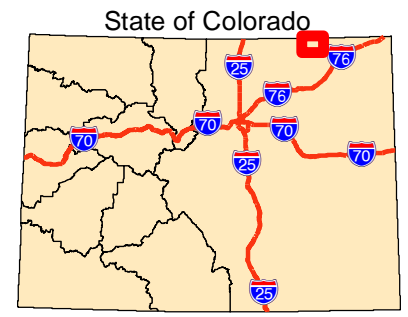
**Legend**

- Status**
  - Recommended for Lease (orange hatched)
  - Recommended for Deferral (yellow hatched)
  - COGCC Oil and Gas Well Locations (black dot)
- Oil and Gas Leases**
  - Non-Producing Leases (blue)
  - Producing Leases (pink)
  - National Grasslands (light green)
  - Private (white)
  - State (light blue)
  - Bankhead-Jones Land Use Lands (light pink)
- Infrastructure**
  - Major Highways (thick red line)
  - Minor Highways (thin red line)
  - Lakes and Reservoirs (blue wavy)
  - Streams (blue line)
  - Township & Range (black outline)
  - Sections (thin black outline)
  - USGS Cities and Towns (red circle)



Page Number 2

**Map Page Location**



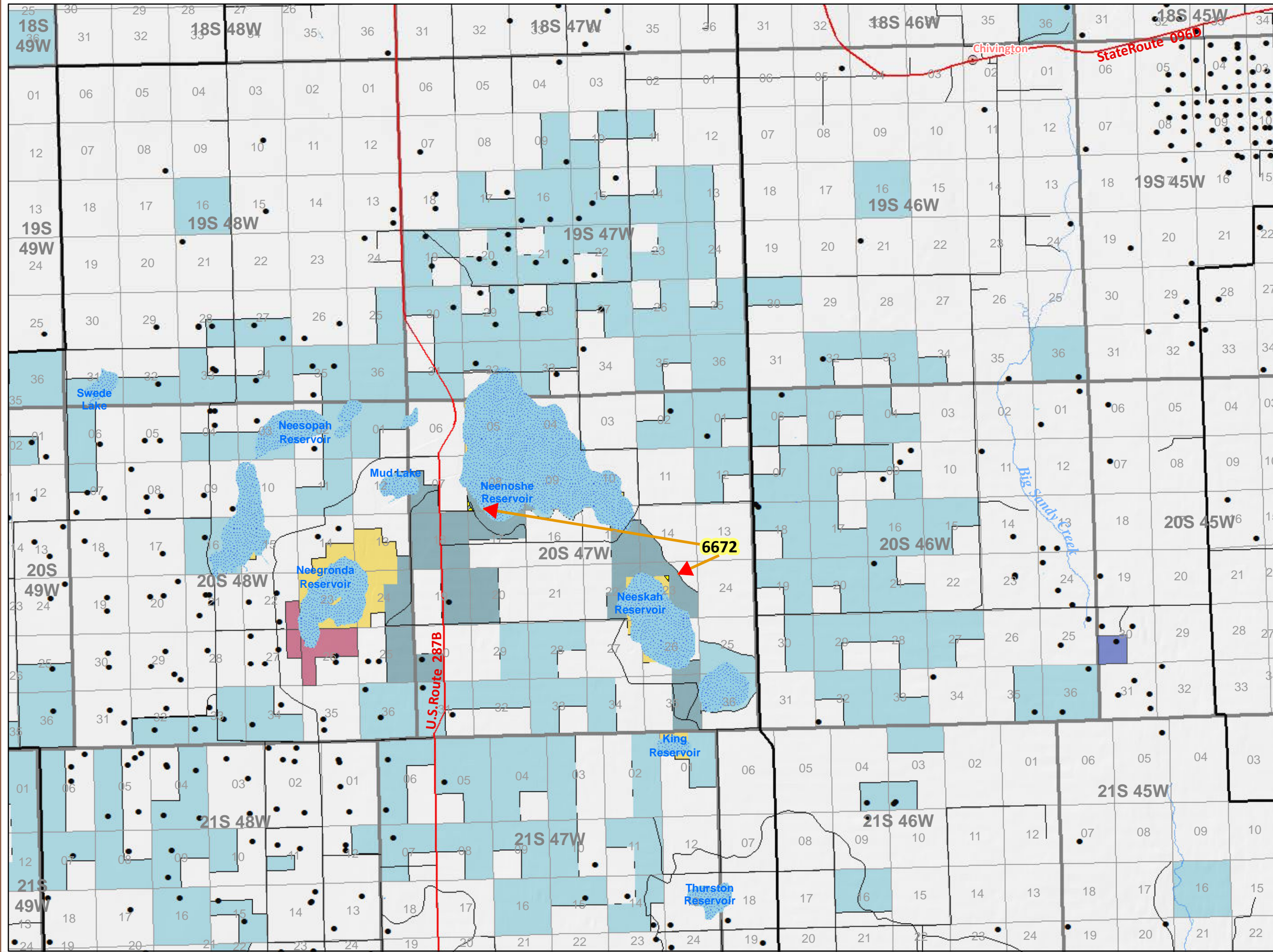
**BLM Oil & Gas Lease Sale  
November 14, 2013**

**Colorado BLM Field Office**

**ROYAL GORGE FIELD OFFICE**

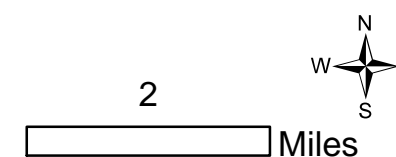


**NOTE TO MAP USERS**  
No warrantee is made by the Bureau of Land Management as to the accuracy, reliability, or completeness of the data layers shown on this map. The official land records should be checked for the current status on any specific tract of land.



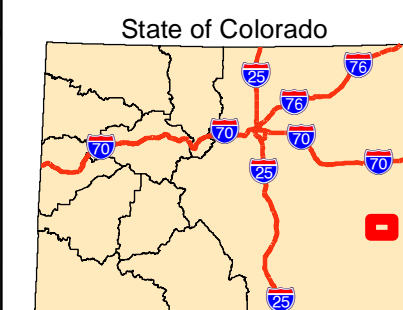
**Legend**

- Status**
- Recommended for Lease
  - Recommended for Deferral
  - COGCC Oil and Gas Well Locations
- Oil and Gas Leases**
- Non-Producing Leases
  - Producing Leases
  - Bureau of Land Management
  - Private
  - State
  - State, County, City; Areas
  - Major Highways
  - Minor Highways
  - Lakes and Reservoirs
  - Streams
  - Township & Range
  - Sections
  - USGS Cities and Towns



**Page Number 3**

**Map Page Location**

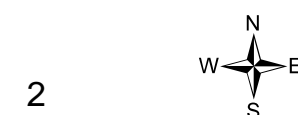




**NOTE TO MAP USERS**  
 No warrantee is made by the Bureau of Land Management as to the accuracy, reliability, or completeness of the data layers shown on this map. The official land records should be checked for the current status on any specific tract of land.

**Legend**

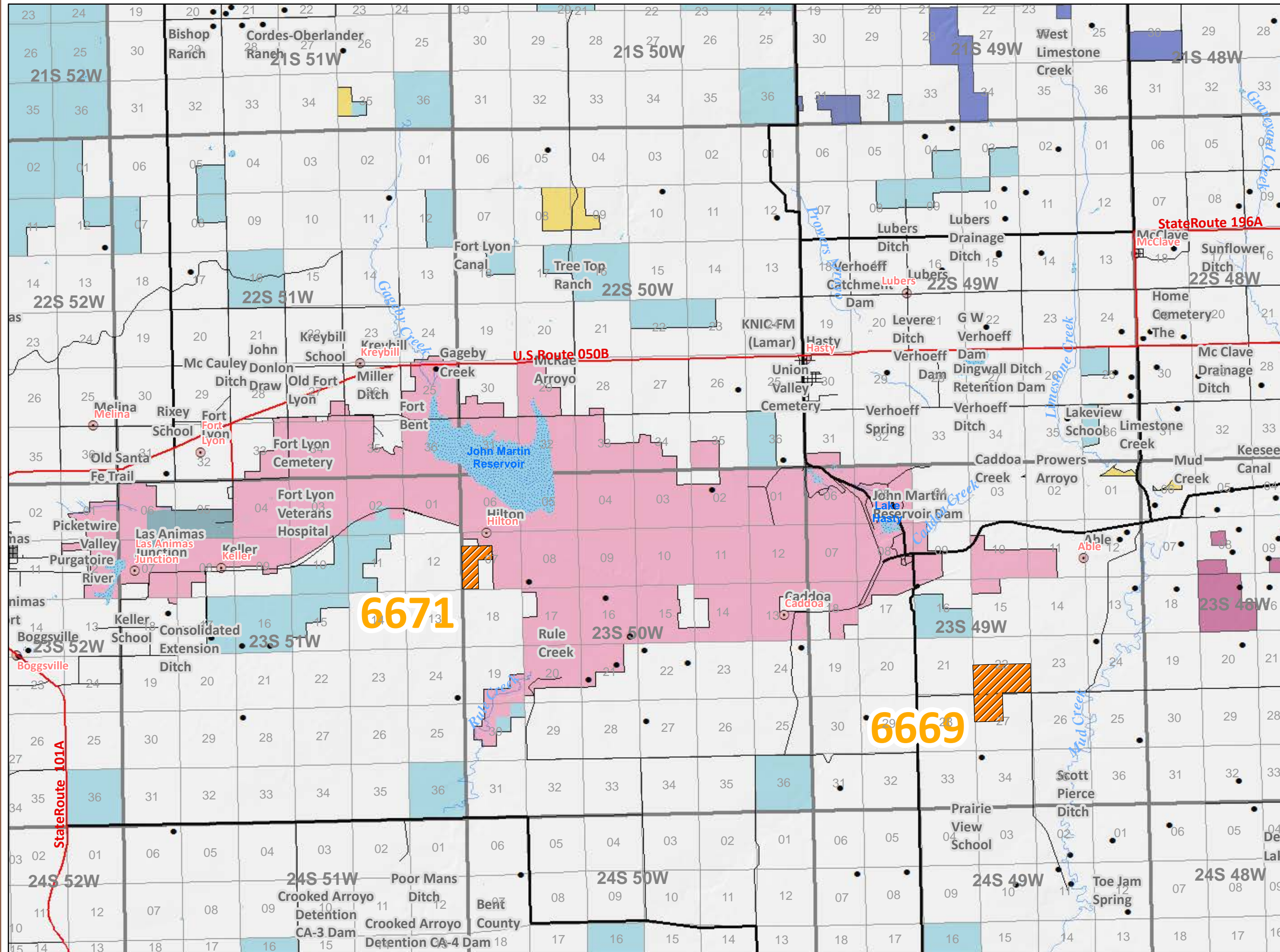
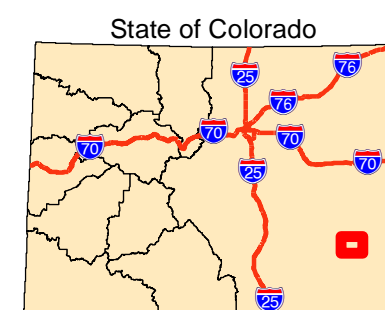
- Status**
- Recommended for Lease
  - Recommended for Deferral
  - COGCC Oil and Gas Well Locations
- Oil and Gas Leases**
- Non-Producing Leases
  - Producing Leases
  - Bureau of Land Management
  - Military Reservation
  - Private
  - State
  - State, County, City; Areas
  - Major Highways
  - Minor Highways
  - Lakes and Reservoirs
  - Streams
  - Township & Range
  - Sections
  - USGS Cities and Towns



2 Miles

**Page Number 4**

**Map Page Location**



**6671**

**6669**

State Route 101A

U.S. Route 050B

State Route 196A

**BLM Oil & Gas Lease Sale  
November 14, 2013**

**Colorado BLM Field Office**

**ROYAL GORGE FIELD OFFICE**



**NOTE TO MAP USERS**  
No warrantee is made by the Bureau of Land Management as to the accuracy, reliability, or completeness of the data layers shown on this map. The official land records should be checked for the current status on any specific tract of land.

**Legend**

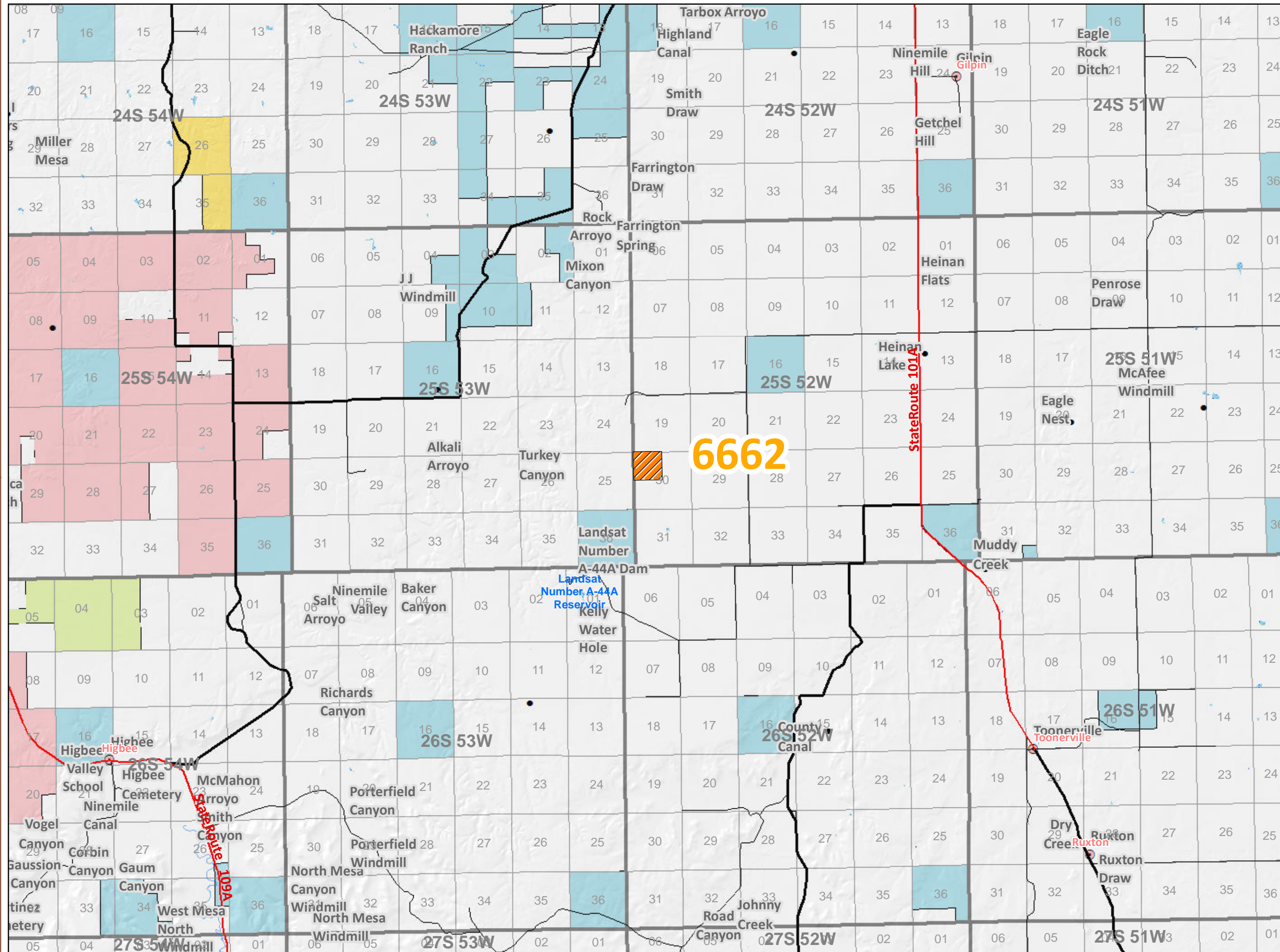
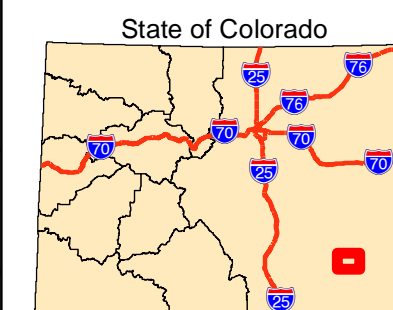
- Status**
- Recommended for Lease
  - Recommended for Deferral
  - COGCC Oil and Gas Well Locations
  - Bureau of Land Management
  - National Grasslands
  - Private
  - State
  - Bankhead-Jones Land Use Lands
  - Major Highways
  - Minor Highways
  - Lakes and Reservoirs
  - Streams
  - Township & Range
  - Sections
  - USGS Cities and Towns



2 Miles

**Page Number 5**

**Map Page Location**



**6662**

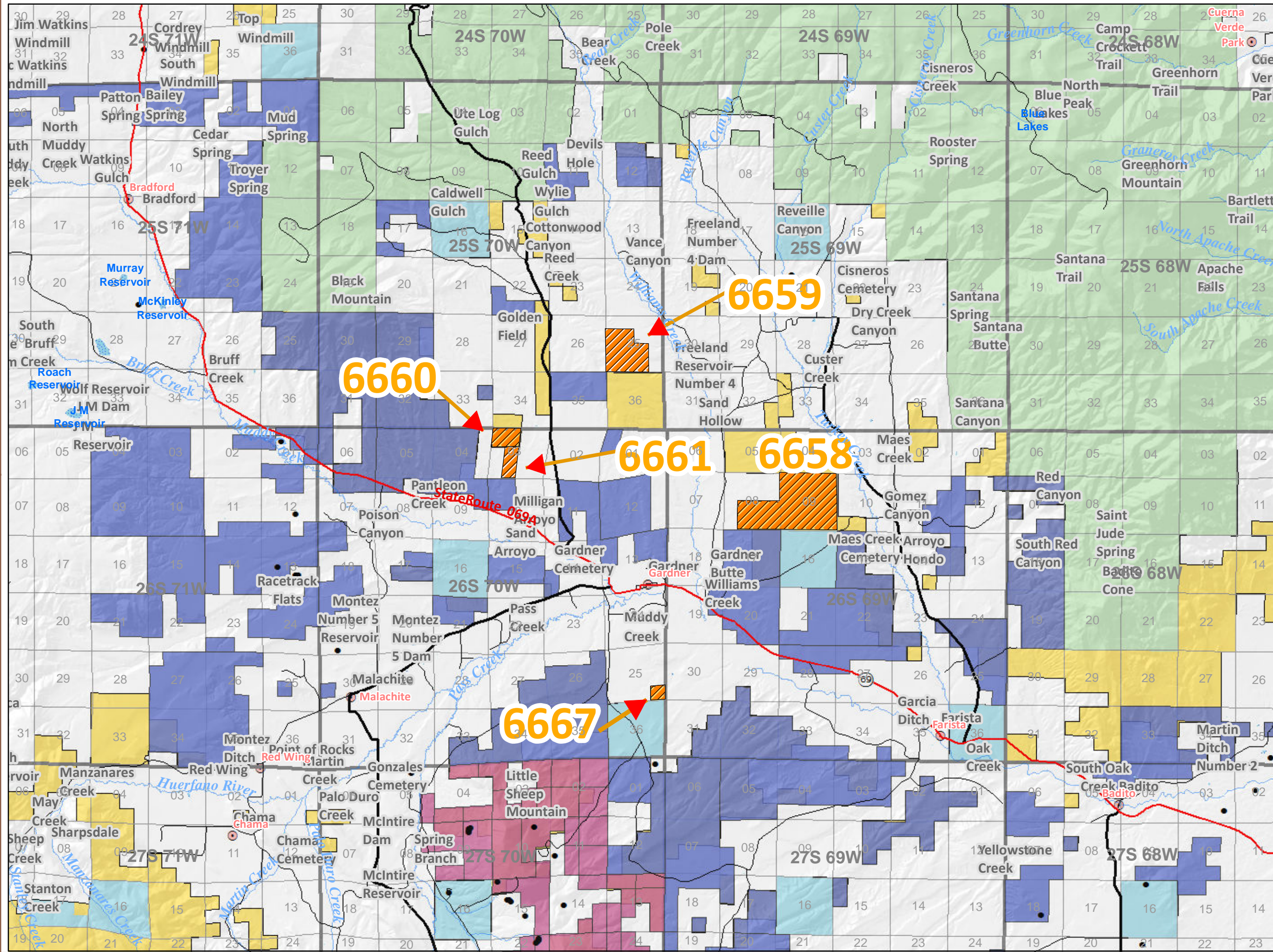
**BLM Oil & Gas Lease Sale  
November 14, 2013**

**Colorado BLM Field Office**

**ROYAL GORGE FIELD OFFICE**

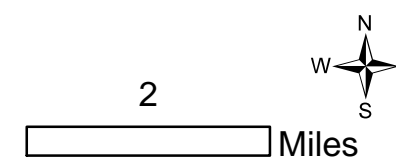


**NOTE TO MAP USERS**  
No warrantee is made by the Bureau of Land Management as to the accuracy, reliability, or completeness of the data layers shown on this map. The official land records should be checked for the current status on any specific tract of land.



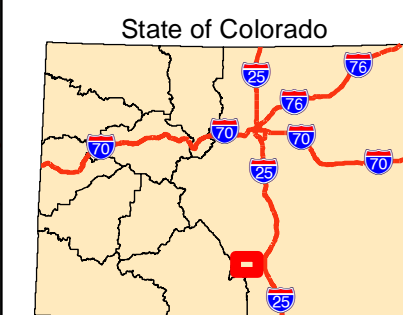
**Legend**

- Status**
- Recommended for Lease
  - Recommended for Deferral
  - COGCC Oil and Gas Well Locations
- Oil and Gas Leases**
- Non-Producing Leases
  - Producing Leases
  - Bureau of Land Management
  - Private
  - State
  - US Forest Service
  - Major Highways
  - Minor Highways
  - Lakes and Reservoirs
  - Streams
  - Township & Range
  - Sections
  - USGS Cities and Towns



**Page Number 6**

**Map Page Location**



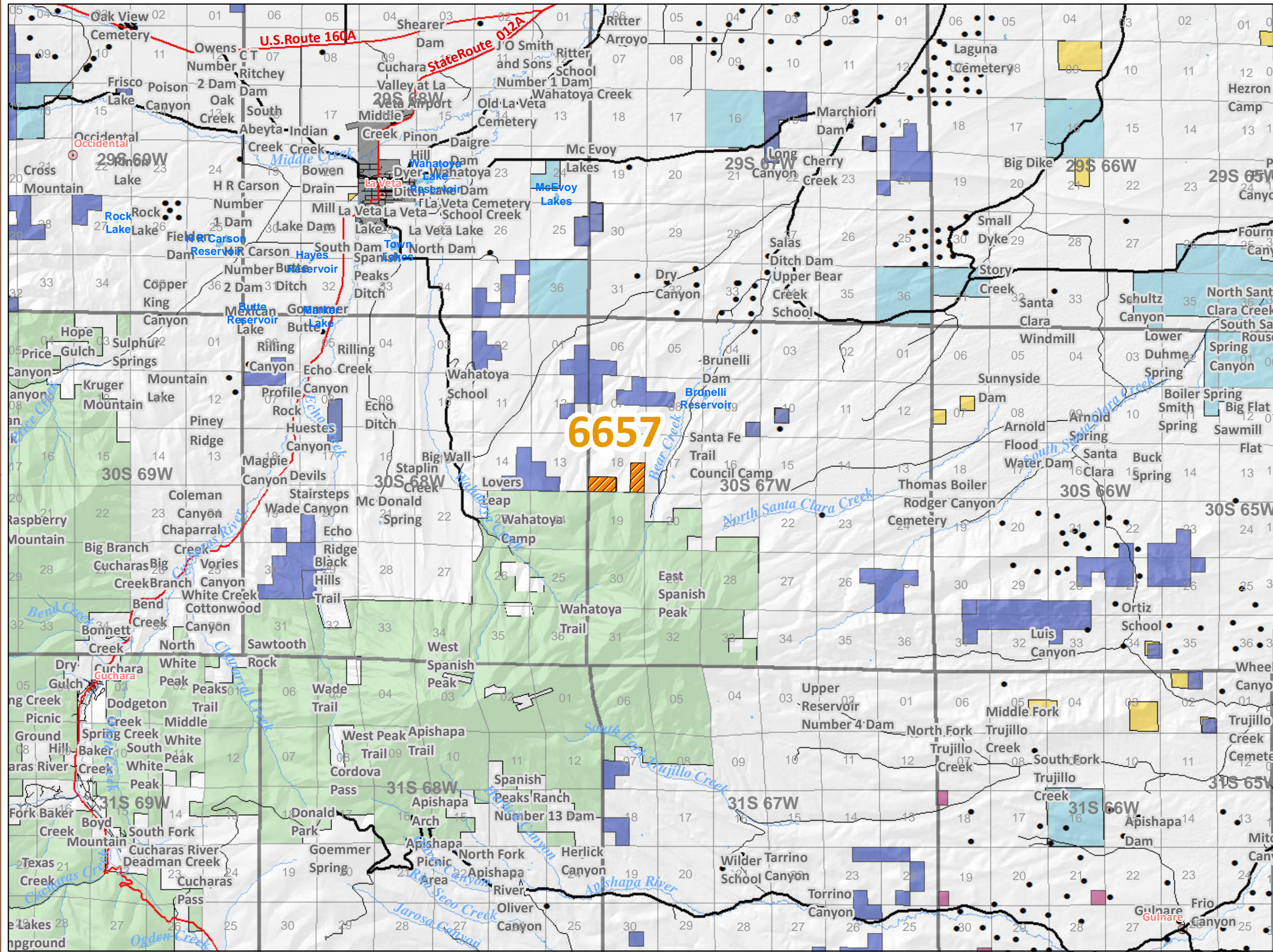
**BLM Oil & Gas Lease Sale  
November 14, 2013**

**Colorado BLM Field Office**

**ROYAL GORGE FIELD OFFICE**



**NOTE TO MAP USERS**  
No warrantee is made by the Bureau of Land Management as to the accuracy, reliability, or completeness of the data layers shown on this map. The official land records should be checked for the current status on any specific tract of land.



**Legend**

- Status**
- Recommended for Lease
  - Recommended for Deferral
  - COGCC Oil and Gas Well Locations
- Oil and Gas Leases**
- Non-Producing Leases
  - Producing Leases
  - Bureau of Land Management
  - Private
  - State
  - US Forest Service
- Other Features**
- Major Highways
  - Minor Highways
  - Lakes and Reservoirs
  - Streams
  - Township & Range
  - Sections
  - USGS Cities and Towns

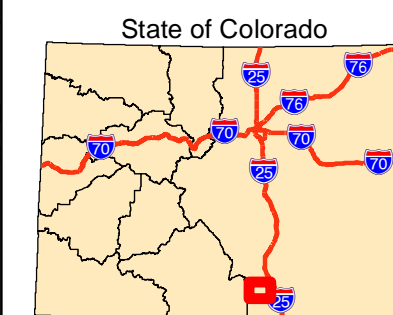


2

Miles

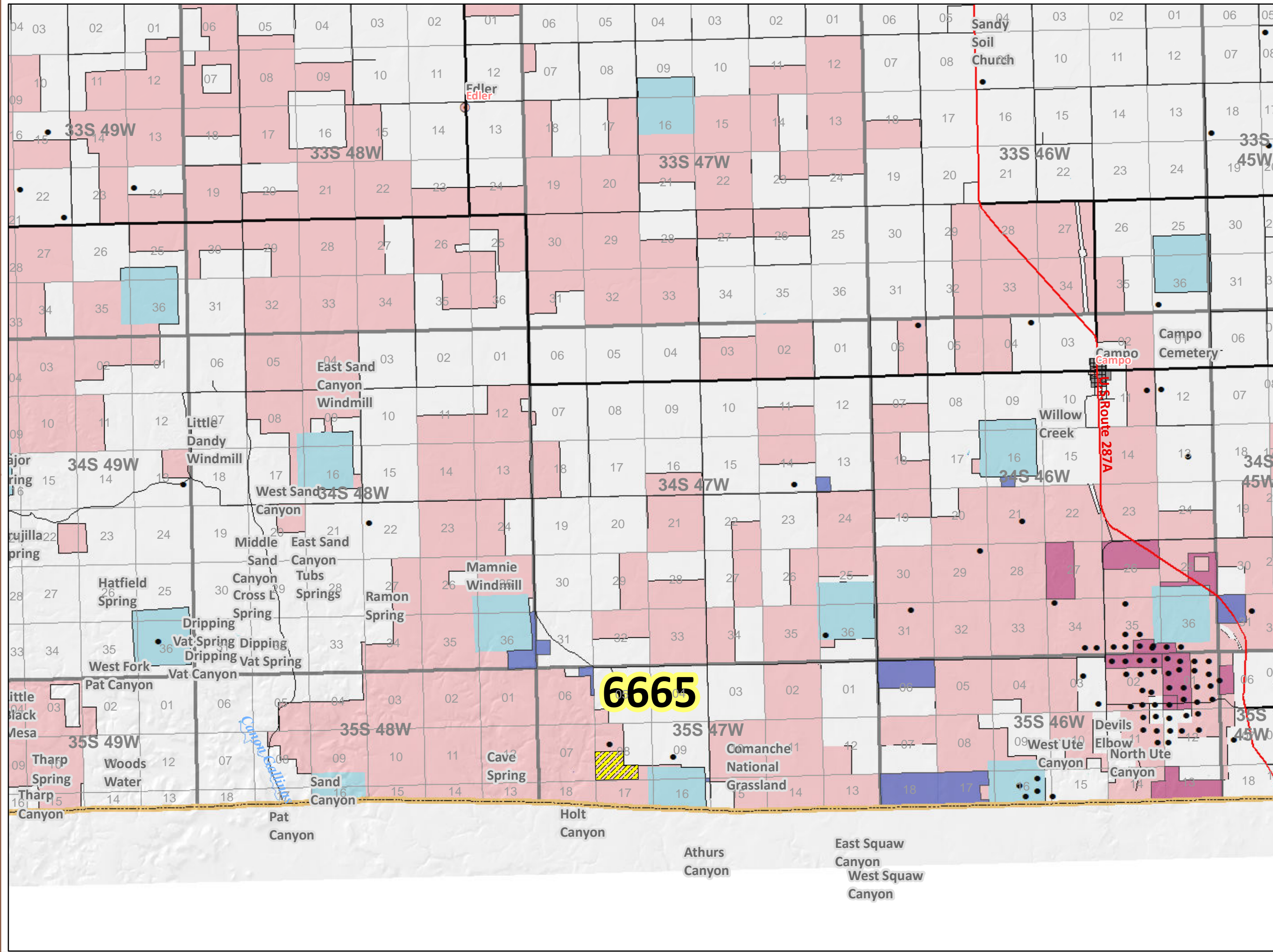
**Page Number 7**

**Map Page Location**





**NOTE TO MAP USERS**  
No warrantee is made by the Bureau of Land Management as to the accuracy, reliability, or completeness of the data layers shown on this map. The official land records should be checked for the current status on any specific tract of land.



**Legend**

- Status**
- Recommended for Lease
  - Recommended for Deferral
  - COGCC Oil and Gas Well Locations
- Oil and Gas Leases**
- Non-Producing Leases
  - Producing Leases
  - Private
  - State
  - Bankhead-Jones Land Use Lands
- Infrastructure**
- Major Highways
  - Minor Highways
  - Lakes and Reservoirs
  - Streams
  - Township & Range
  - Sections
  - USGS Cities and Towns

2

Miles

**Page Number 8**

**Map Page Location**

