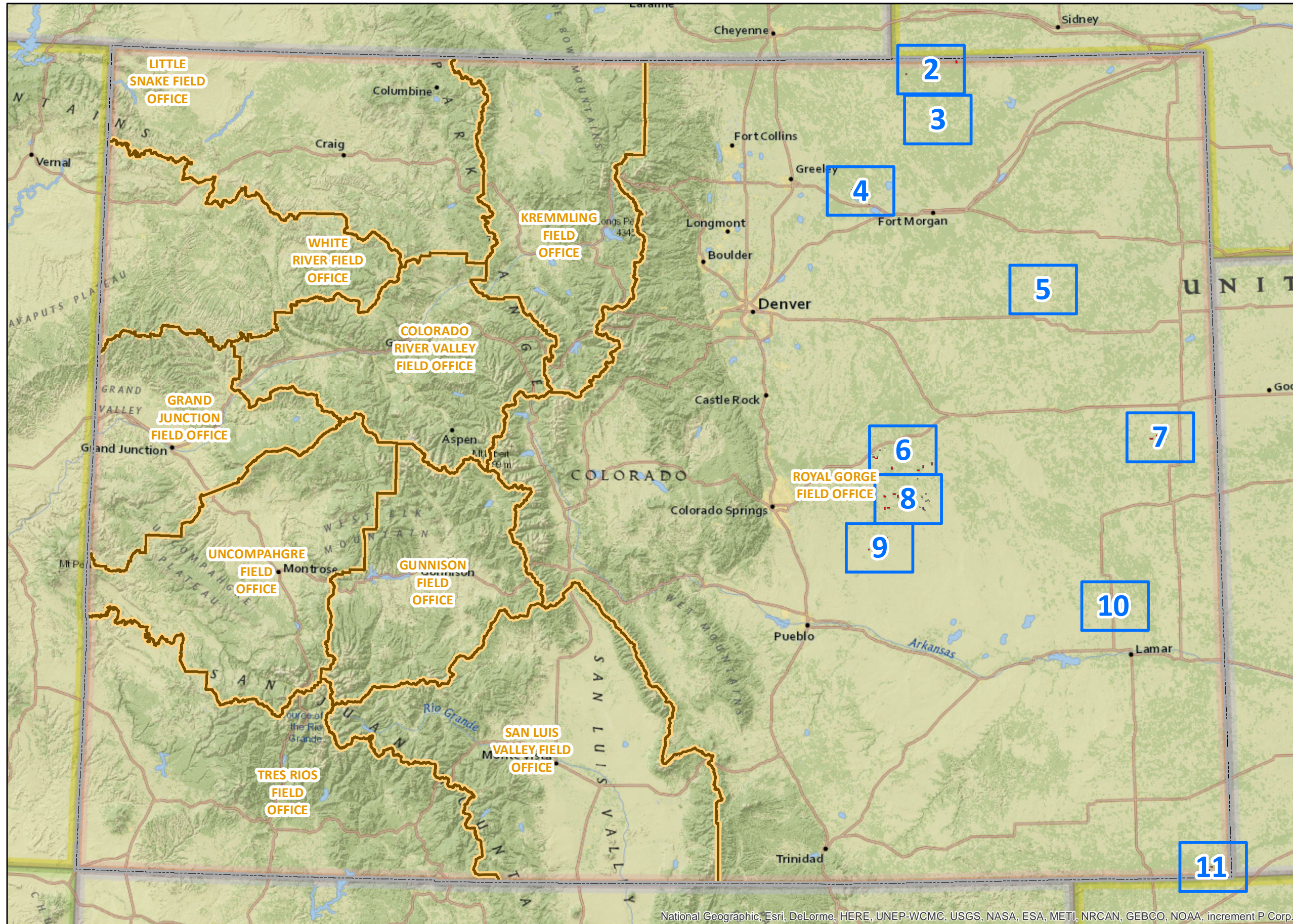


BLM Competitive Oil and Gas Lease Sale November, 2014



Legend

Parcel Locations

- Parcel Locations (Red square)
- Detailed Map View Pages (Blue square)
- State Boundary (Grey dashed line)
- BLM Field Office Boundaries (Orange dashed line)

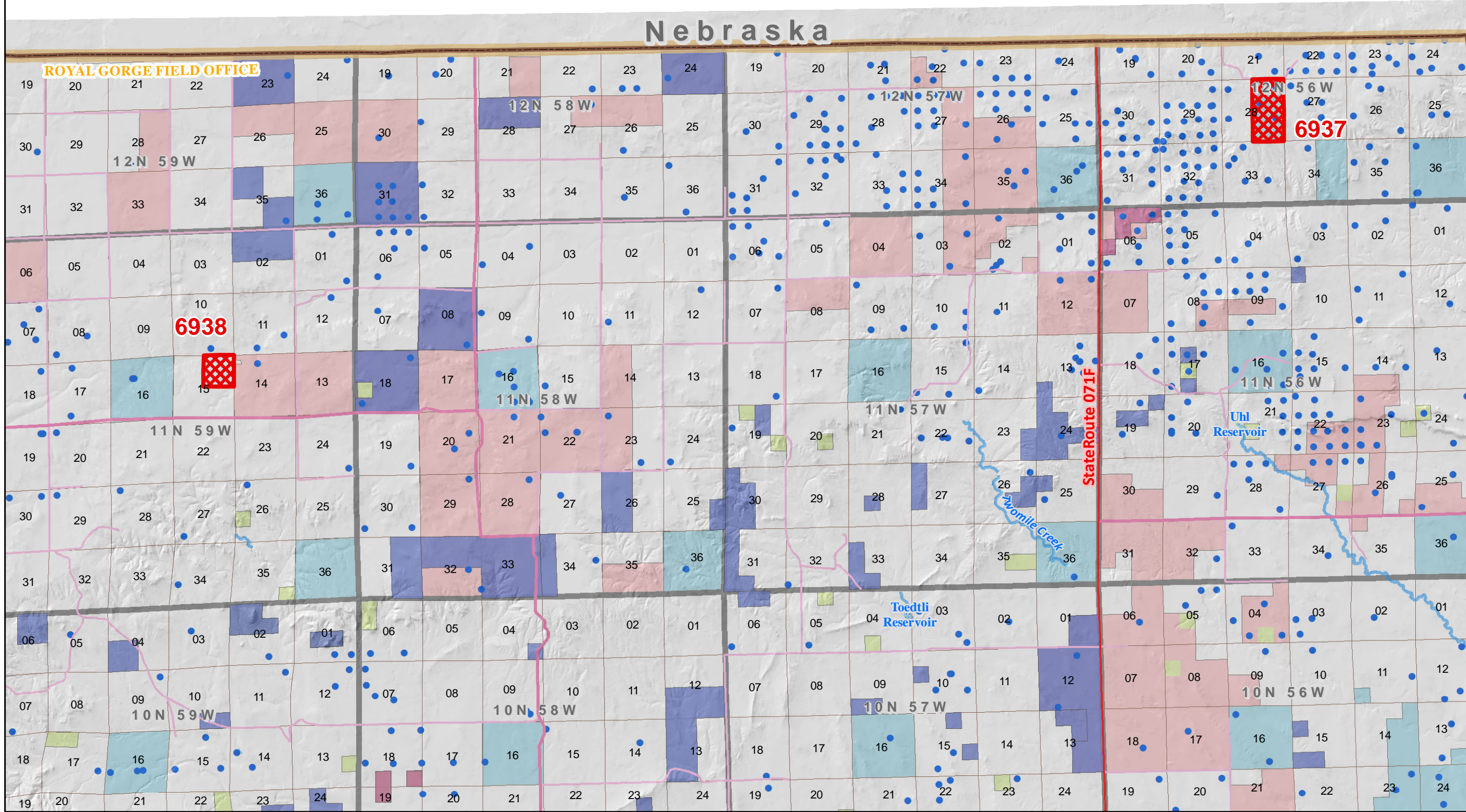
Please click on the Close Up Map Pages to see more detail.

3 / 11

Click on the Page Navigation Tools to return to this Index map on Page 1.

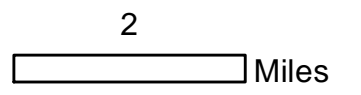


NOTE TO MAP USERS
No warrantee is made by the Bureau of Land Management as to the accuracy, reliability, or completeness of the data layers shown on this map. The official land records should be checked for the current status on any specific tract of land.

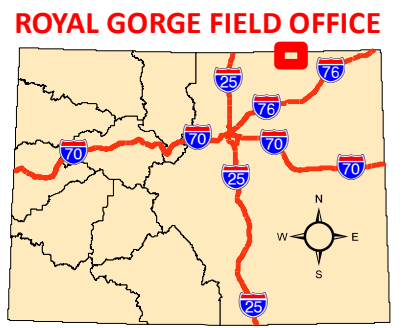


Legend

- USA State Boundaries
- BLM Field Office Areas
- Recommended Oil & Gas Sale Status**
- Sale
- COGCC Oil and Gas Well Locations
- Oil and Gas Leases**
- Non-Producing Leases
- Producing Leases
- National Grasslands
- Private
- State
- Bankhead-Jones Land Use Lands
- Township & Range
- Sections
- Lakes and Reservoirs
- Minor Highways
- CDOT Local Roads
- Streams
- USGS Cities and Towns



Map Page Location
Page Number 2



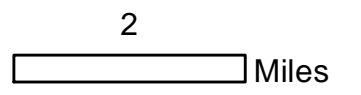
**Bureau of Land Management
Competitive Oil & Gas Lease Sale
November, 2014**



NOTE TO MAP USERS
No warrantee is made by the Bureau of Land Management as to the accuracy, reliability, or completeness of the data layers shown on this map. The official land records should be checked for the current status on any specific tract of land.

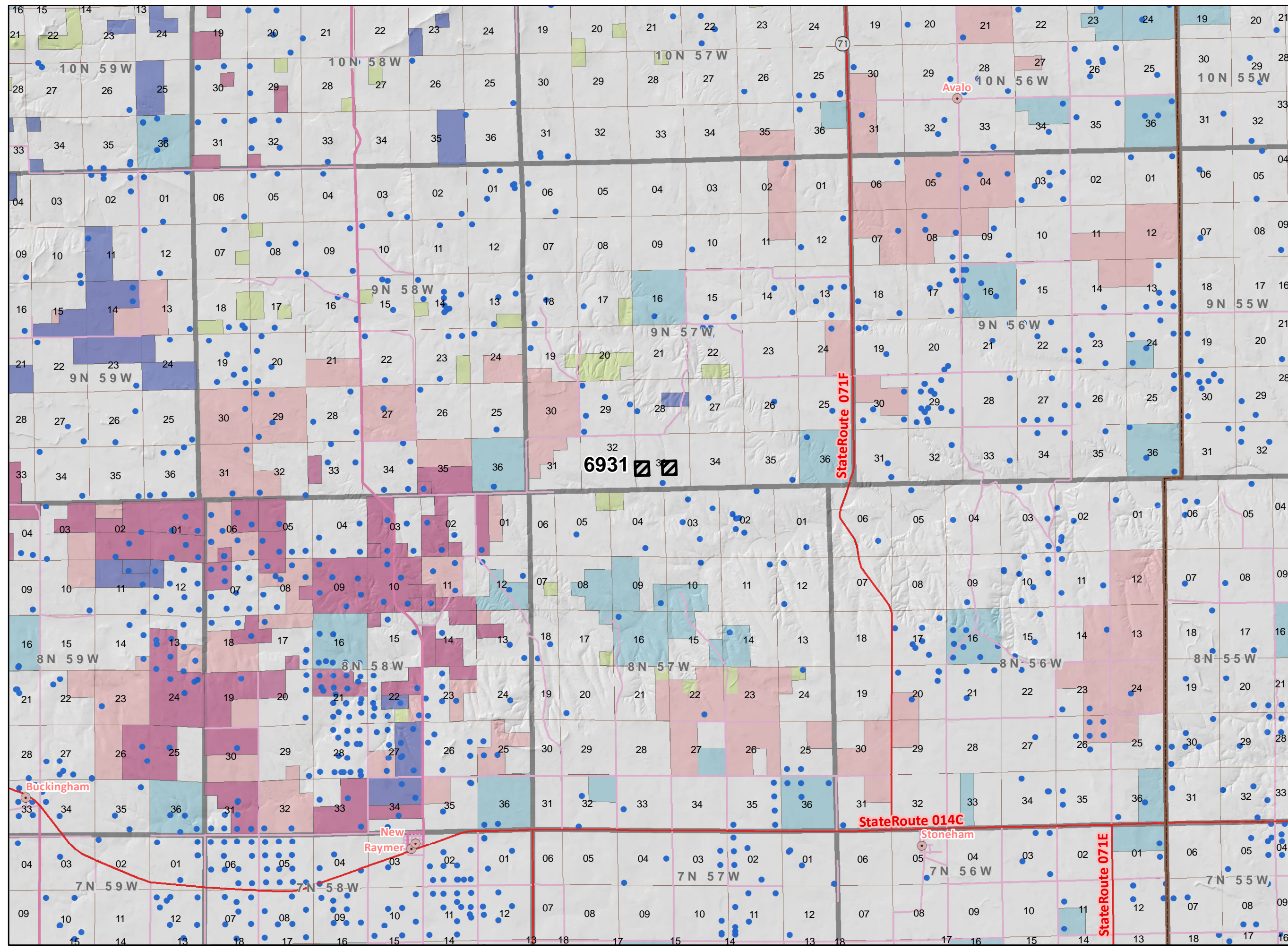
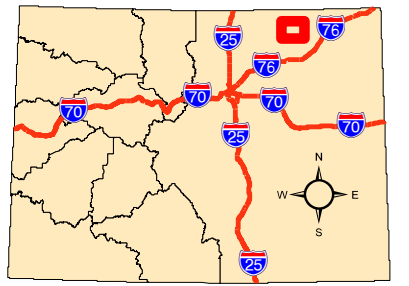
Legend

- BLM Field Office Areas
- Recommended Oil & Gas Sale Status**
- Deferral
- COGCC Oil and Gas Well Locations
- Oil and Gas Leases**
- Non-Producing Leases
- Producing Leases
- National Grasslands
- Private
- State
- Bankhead-Jones Land Use Lands
- Township & Range
- Sections
- Minor Highways
- CDOT Local Roads
- USGS Cities and Towns



**Map Page Location
Page Number 3**

ROYAL GORGE FIELD OFFICE

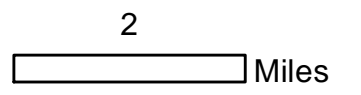




NOTE TO MAP USERS
No warrantee is made by the Bureau of Land Management as to the accuracy, reliability, or completeness of the data layers shown on this map. The official land records should be checked for the current status on any specific tract of land.

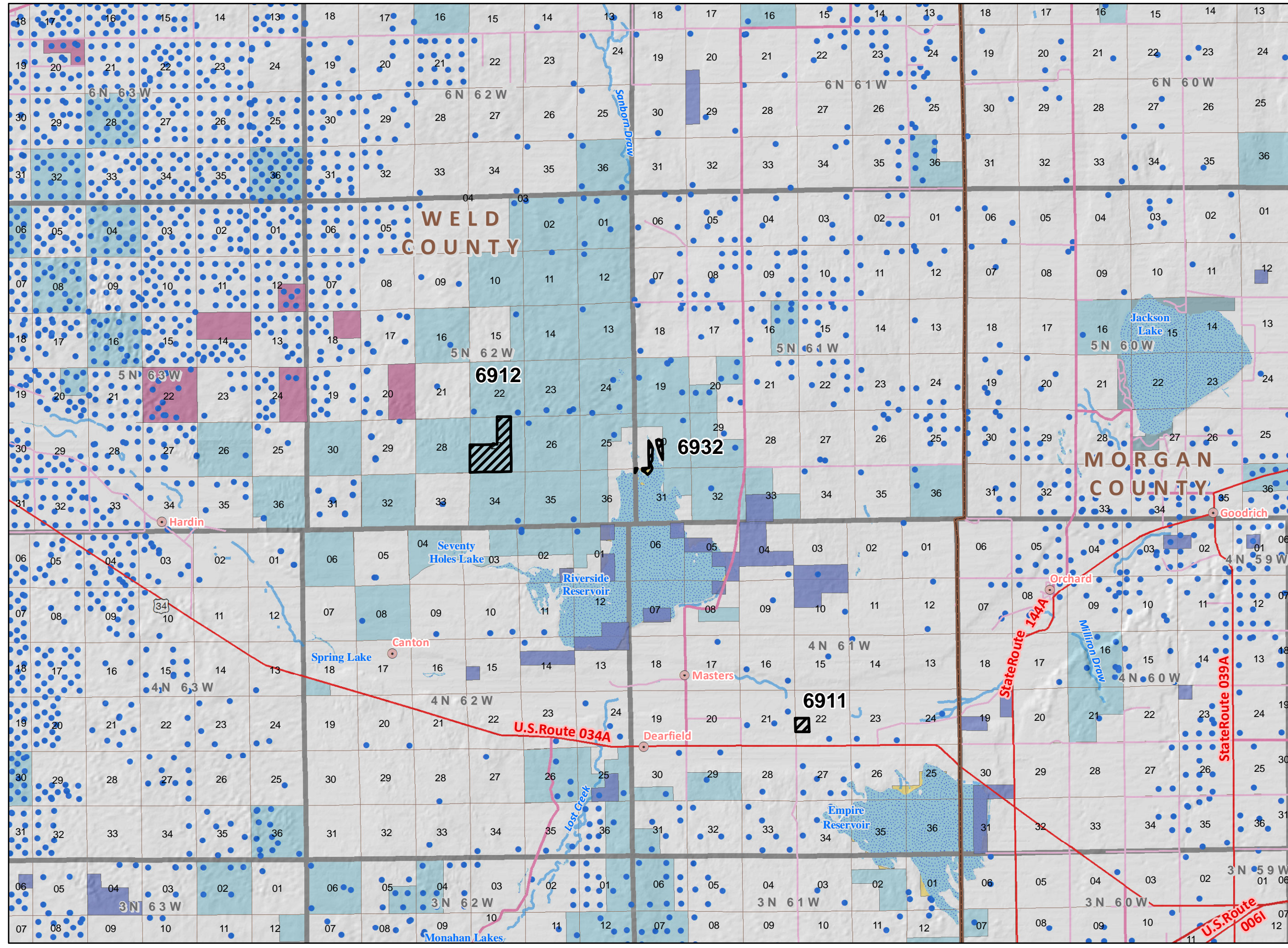
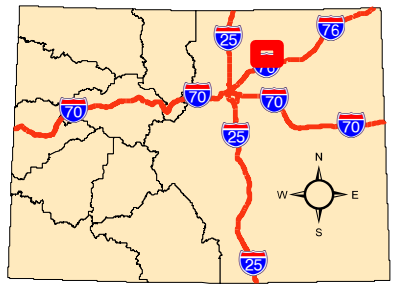
Legend

- BLM Field Office Areas
- Recommended Oil & Gas Sale Status**
- Deferral
- COGCC Oil and Gas Well Locations
- Oil and Gas Leases**
- Non-Producing Leases
- Producing Leases
- Bureau of Land Management
- Private
- State
- State, County, City; Areas
- Township & Range
- Sections
- Lakes and Reservoirs
- Major Highways
- Minor Highways
- CDOT Local Roads
- Streams
- USGS Cities and Towns



**Map Page Location
Page Number 4**

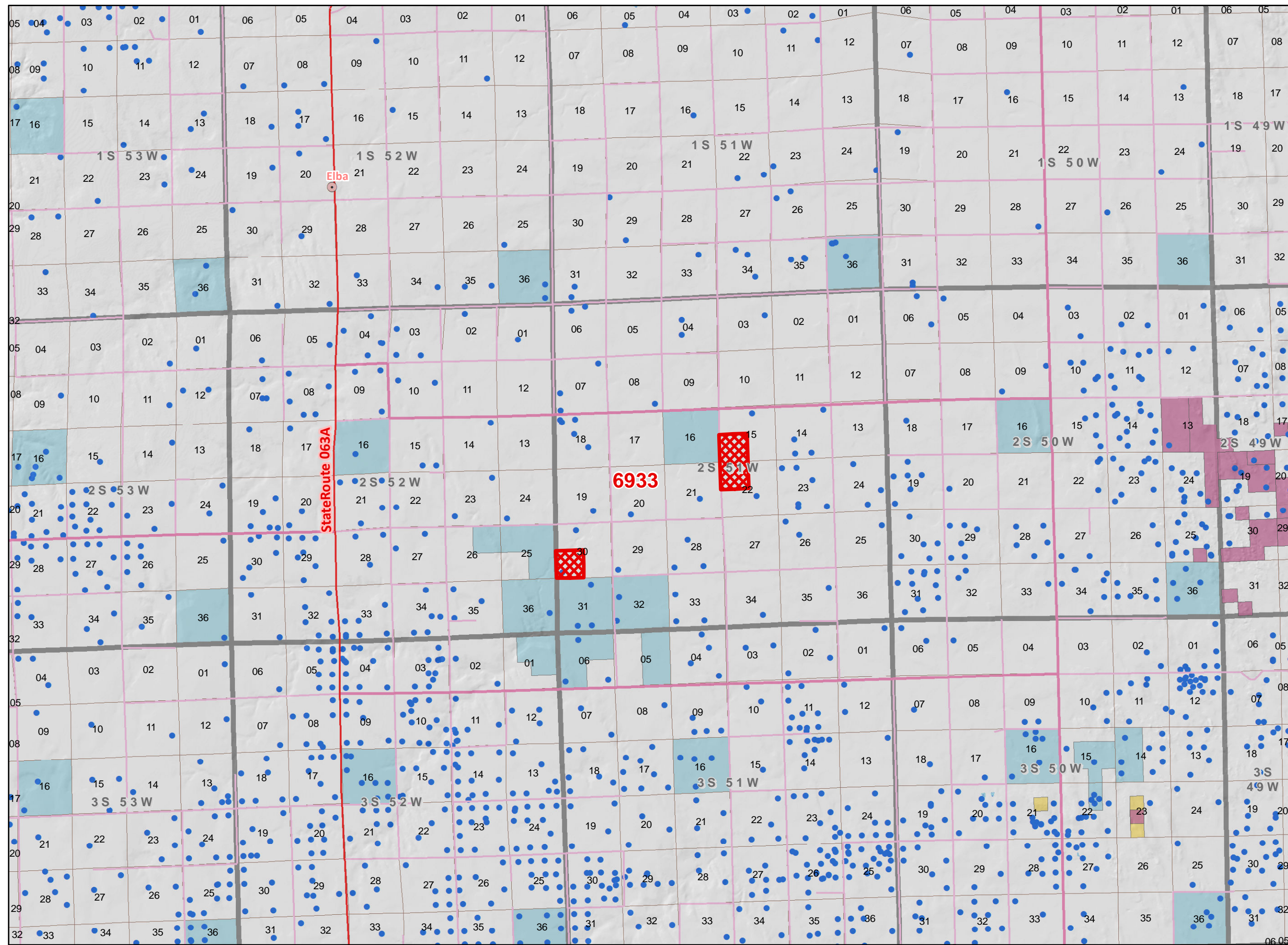
ROYAL GORGE FIELD OFFICE



**Bureau of Land Management
Competitive Oil & Gas Lease Sale
November, 2014**

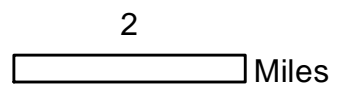


NOTE TO MAP USERS
No warrantee is made by the Bureau of Land Management as to the accuracy, reliability, or completeness of the data layers shown on this map. The official land records should be checked for the current status on any specific tract of land.



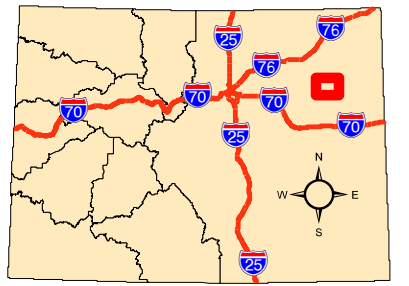
Legend

- BLM Field Office Areas
- Recommended Oil & Gas Sale Status**
- Sale
- COGCC Oil and Gas Well Locations
- Oil and Gas Leases**
- Producing Leases
- Bureau of Land Management
- Private
- State
- Township & Range
- Sections
- Lakes and Reservoirs
- Minor Highways
- CDOT Local Roads
- USGS Cities and Towns



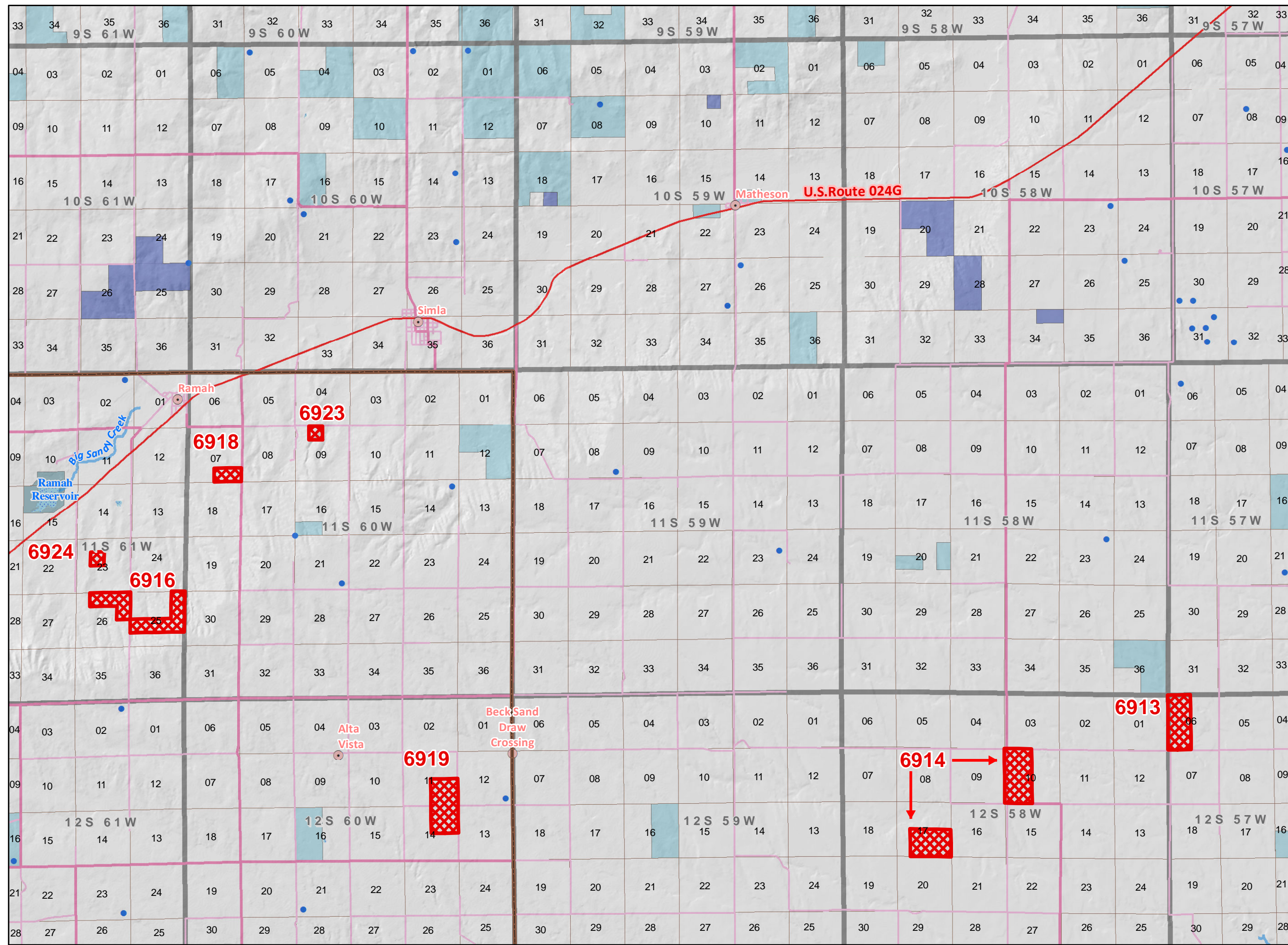
**Map Page Location
Page Number 5**

ROYAL GORGE FIELD OFFICE



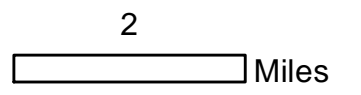


NOTE TO MAP USERS
No warrantee is made by the Bureau of Land Management as to the accuracy, reliability, or completeness of the data layers shown on this map. The official land records should be checked for the current status on any specific tract of land.



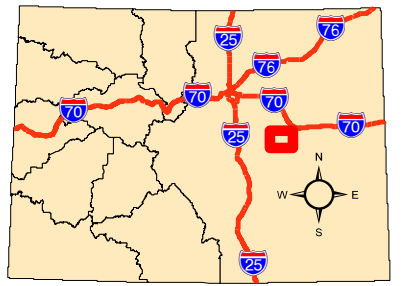
Legend

- BLM Field Office Areas
- Recommended Oil & Gas Sale Status**
- Sale
- COGCC Oil and Gas Well Locations
- Oil and Gas Leases**
- Non-Producing Leases
- Private
- State
- State, County, City; Areas
- Township & Range
- Sections
- Lakes and Reservoirs
- Minor Highways
- CDOT Local Roads
- Streams
- USGS Cities and Towns



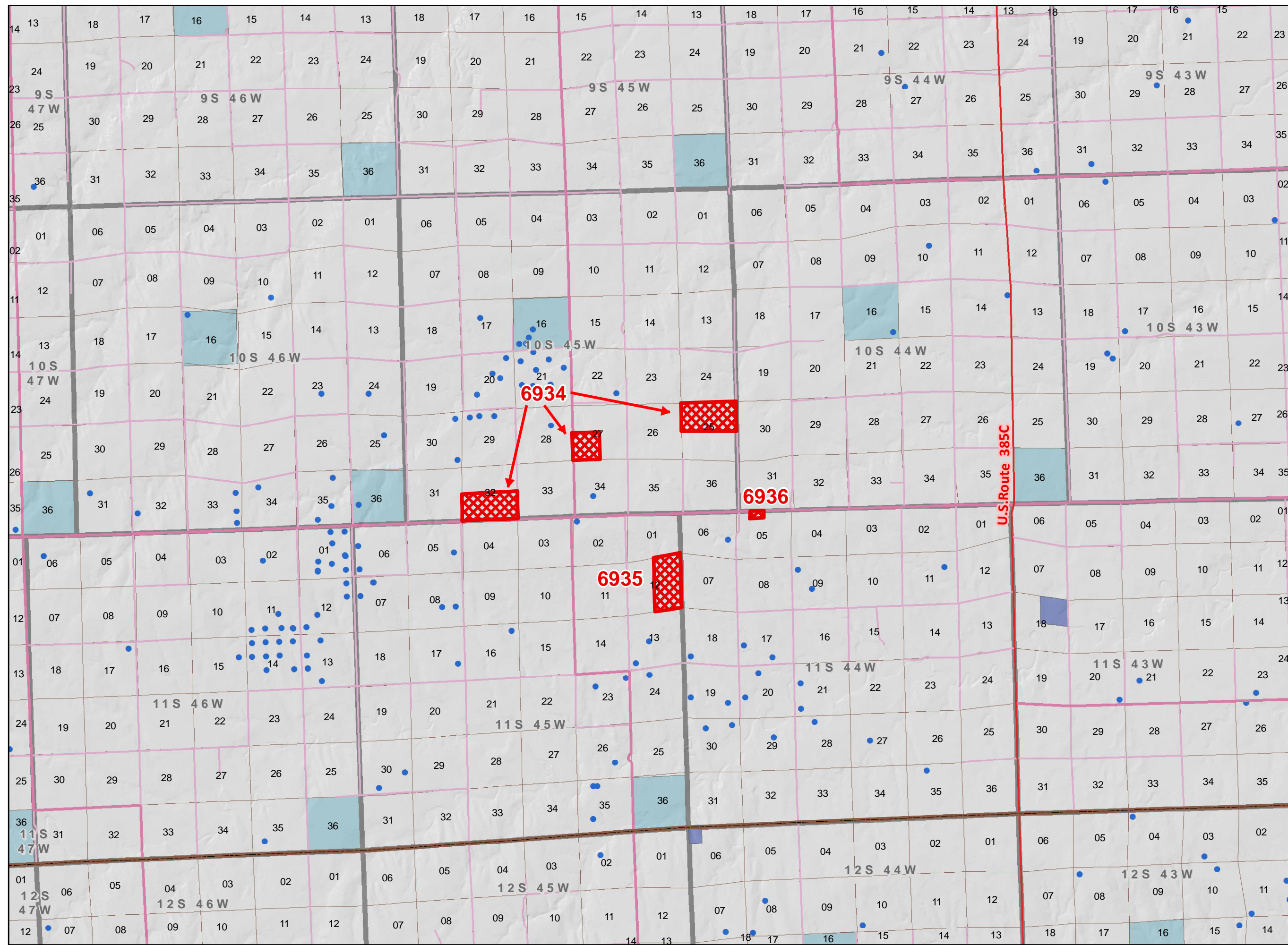
**Map Page Location
Page Number 6**

ROYAL GORGE FIELD OFFICE



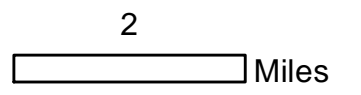


NOTE TO MAP USERS
No warrantee is made by the Bureau of Land Management as to the accuracy, reliability, or completeness of the data layers shown on this map. The official land records should be checked for the current status on any specific tract of land.



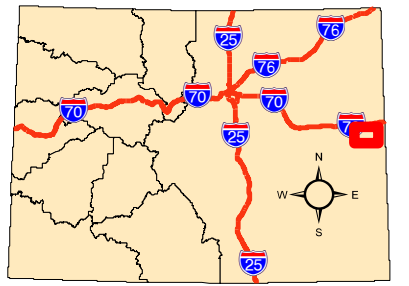
Legend

- BLM Field Office Areas
- Recommended Oil & Gas Sale Status**
- Sale
- COGCC Oil and Gas Well Locations
- Oil and Gas Leases**
- Non-Producing Leases
- Private
- State
- Township & Range
- Sections
- Minor Highways
- CDOT Local Roads
- USGS Cities and Towns



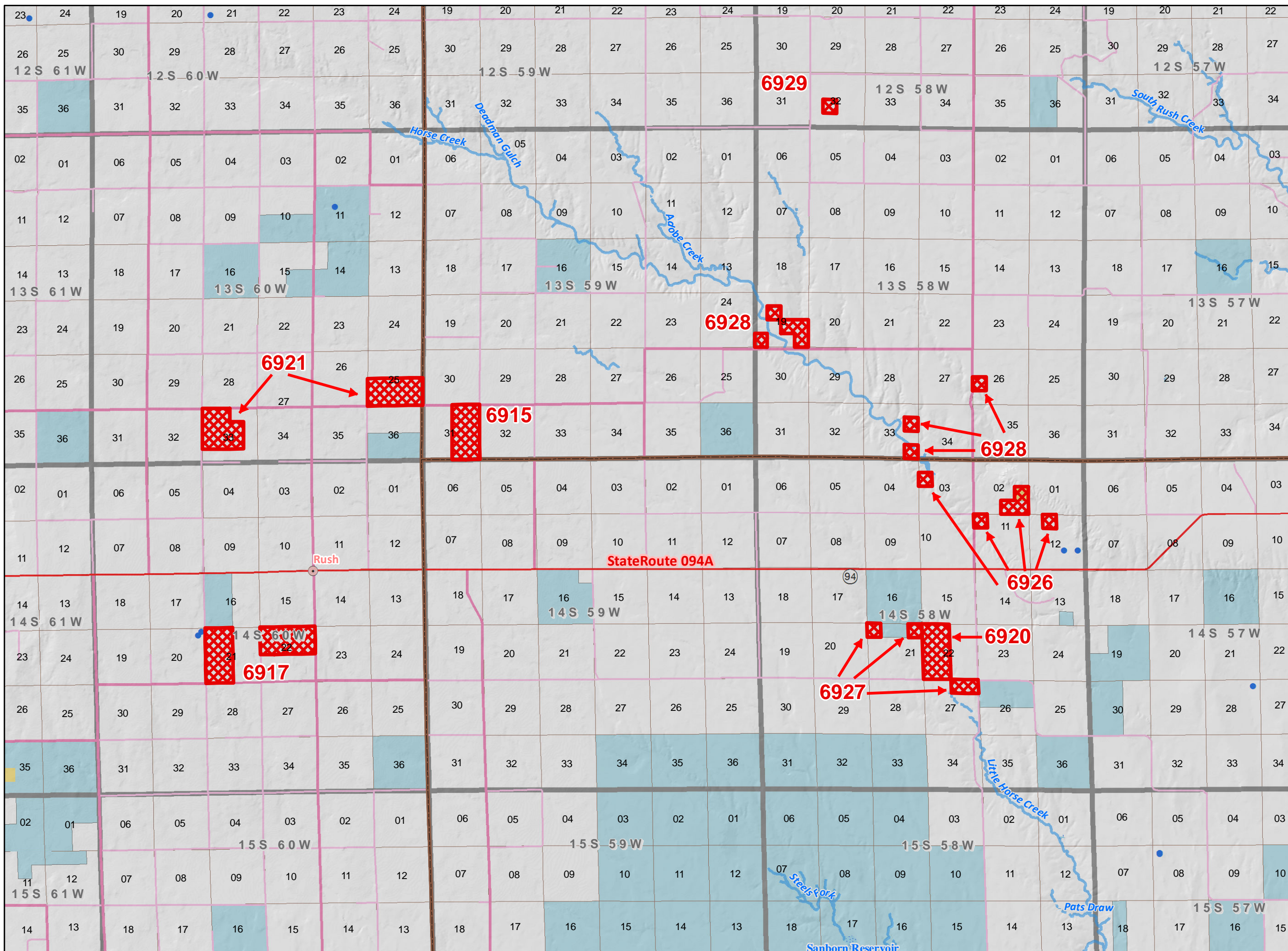
**Map Page Location
Page Number 7**

ROYAL GORGE FIELD OFFICE



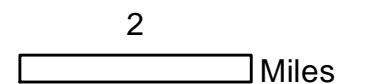


NOTE TO MAP USERS
No warrantee is made by the Bureau of Land Management as to the accuracy, reliability, or completeness of the data layers shown on this map. The official land records should be checked for the current status on any specific tract of land.



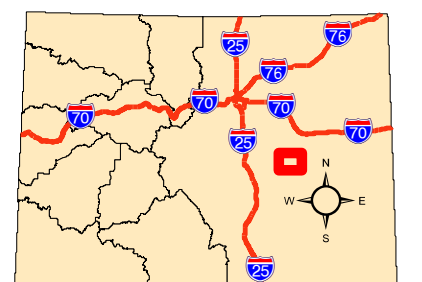
Legend

- BLM Field Office Areas
- Recommended Oil & Gas Sale Status**
- Sale
- COGCC Oil and Gas Well Locations
- Bureau of Land Management
- Private
- State
- Township & Range
- Sections
- Lakes and Reservoirs
- Minor Highways
- CDOT Local Roads
- Streams
- USGS Cities and Towns



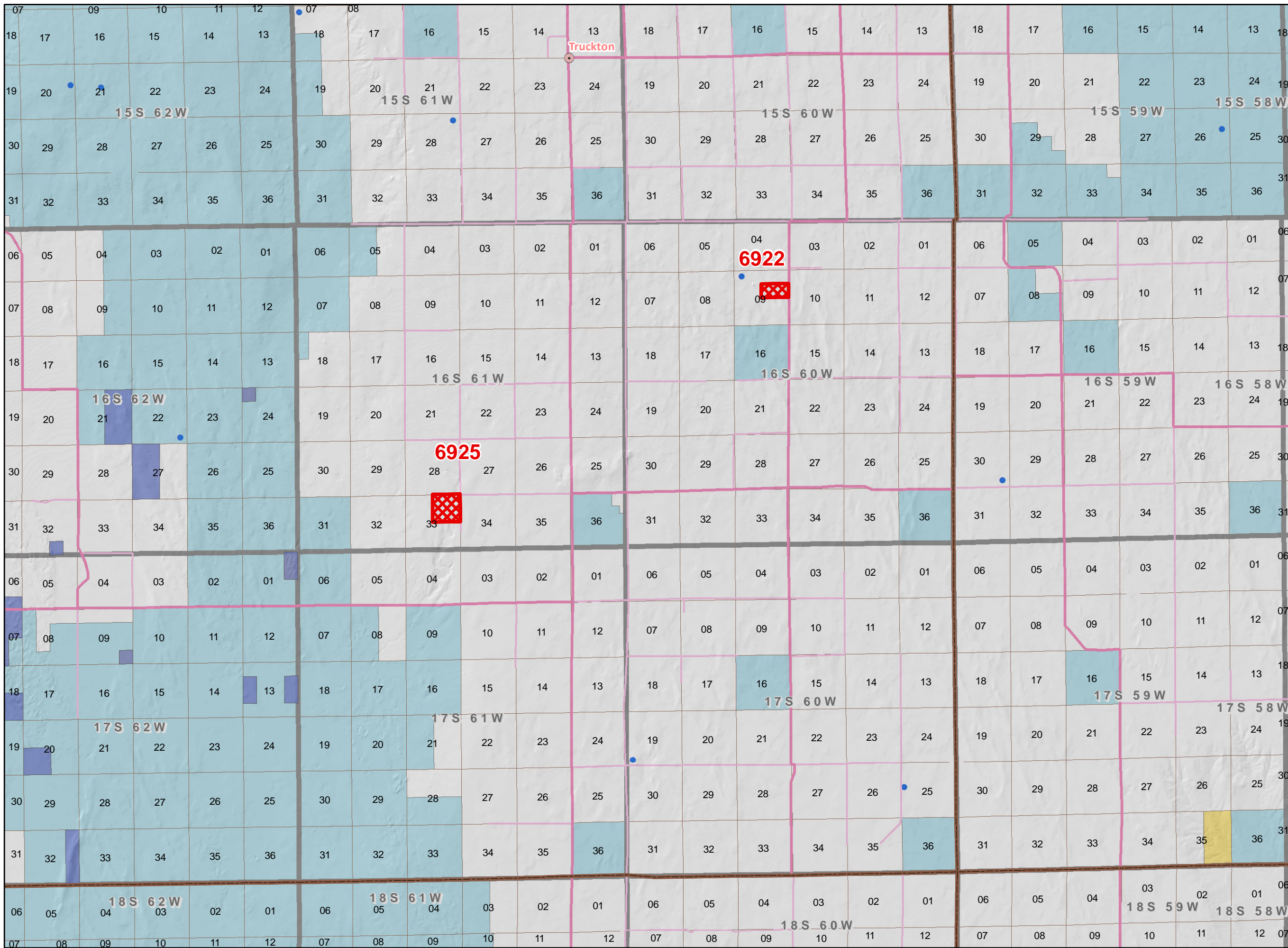
**Map Page Location
Page Number 8**

ROYAL GORGE FIELD OFFICE



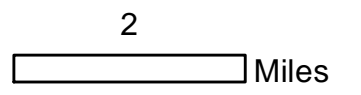


NOTE TO MAP USERS
No warrantee is made by the Bureau of Land Management as to the accuracy, reliability, or completeness of the data layers shown on this map. The official land records should be checked for the current status on any specific tract of land.



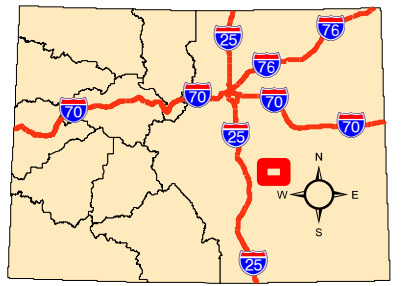
Legend

- BLM Field Office Areas
- Recommended Oil & Gas Sale Status**
- Sale
- COGCC Oil and Gas Well Locations
- Oil and Gas Leases**
- Non-Producing Leases
- Bureau of Land Management
- Private
- State
- Township & Range
- Sections
- CDOT Local Roads
- USGS Cities and Towns



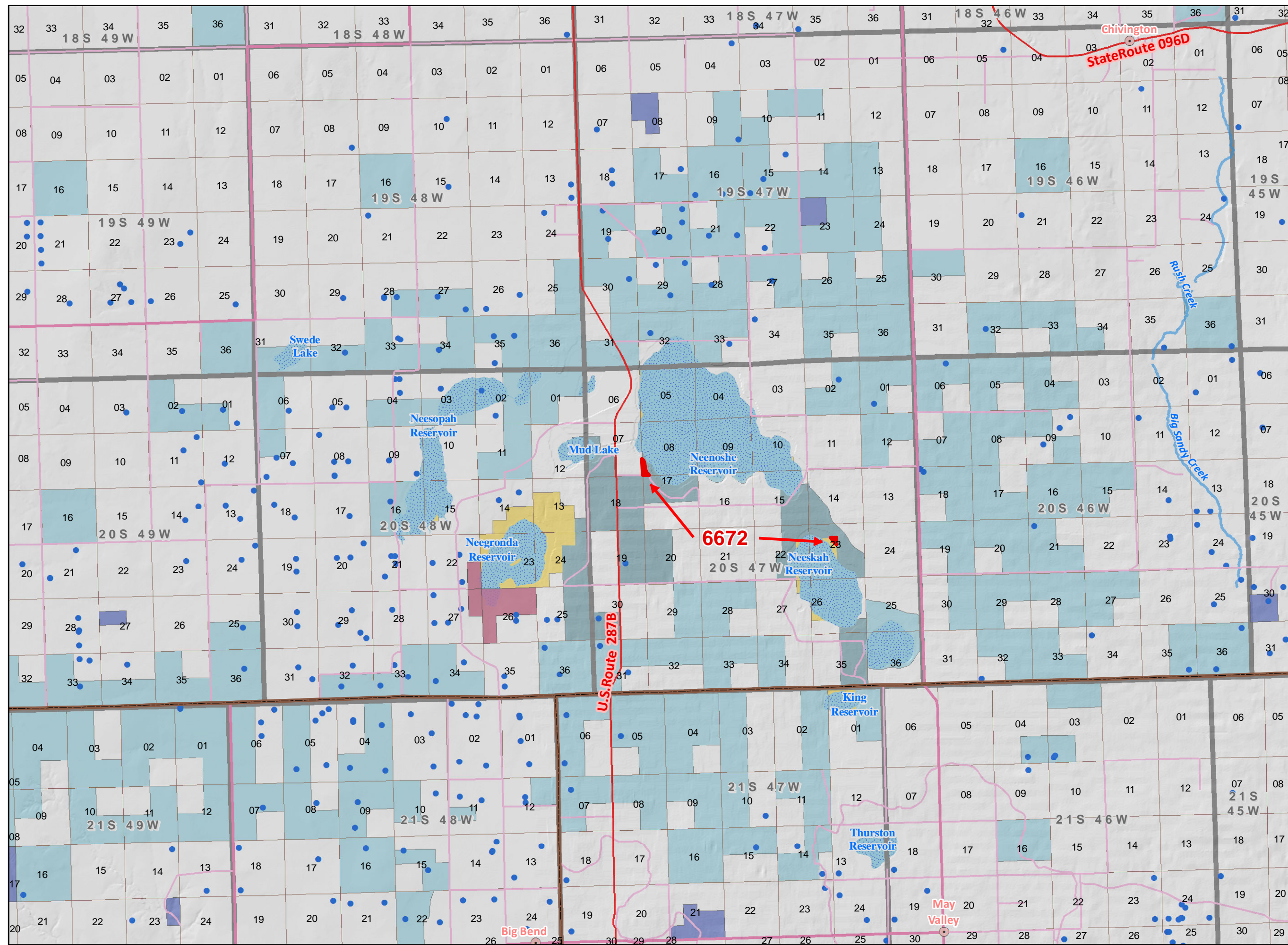
**Map Page Location
Page Number 9**

ROYAL GORGE FIELD OFFICE





NOTE TO MAP USERS
No warrantee is made by the Bureau of Land Management as to the accuracy, reliability, or completeness of the data layers shown on this map. The official land records should be checked for the current status on any specific tract of land.



Legend

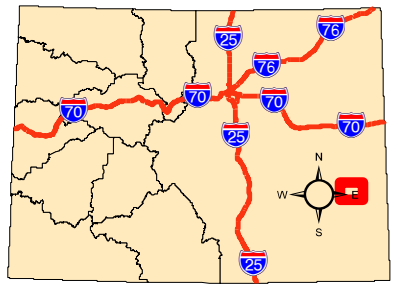
- BLM Field Office Areas
- Recommended Oil & Gas Sale Status**
- Sale
- COGCC Oil and Gas Well Locations
- Oil and Gas Leases**
- Non-Producing Leases
- Producing Leases
- Bureau of Land Management
- Private
- State
- State, County, City; Areas
- Township & Range
- Sections
- Lakes and Reservoirs
- Minor Highways
- CDOT Local Roads
- Streams
- USGS Cities and Towns

2

Miles

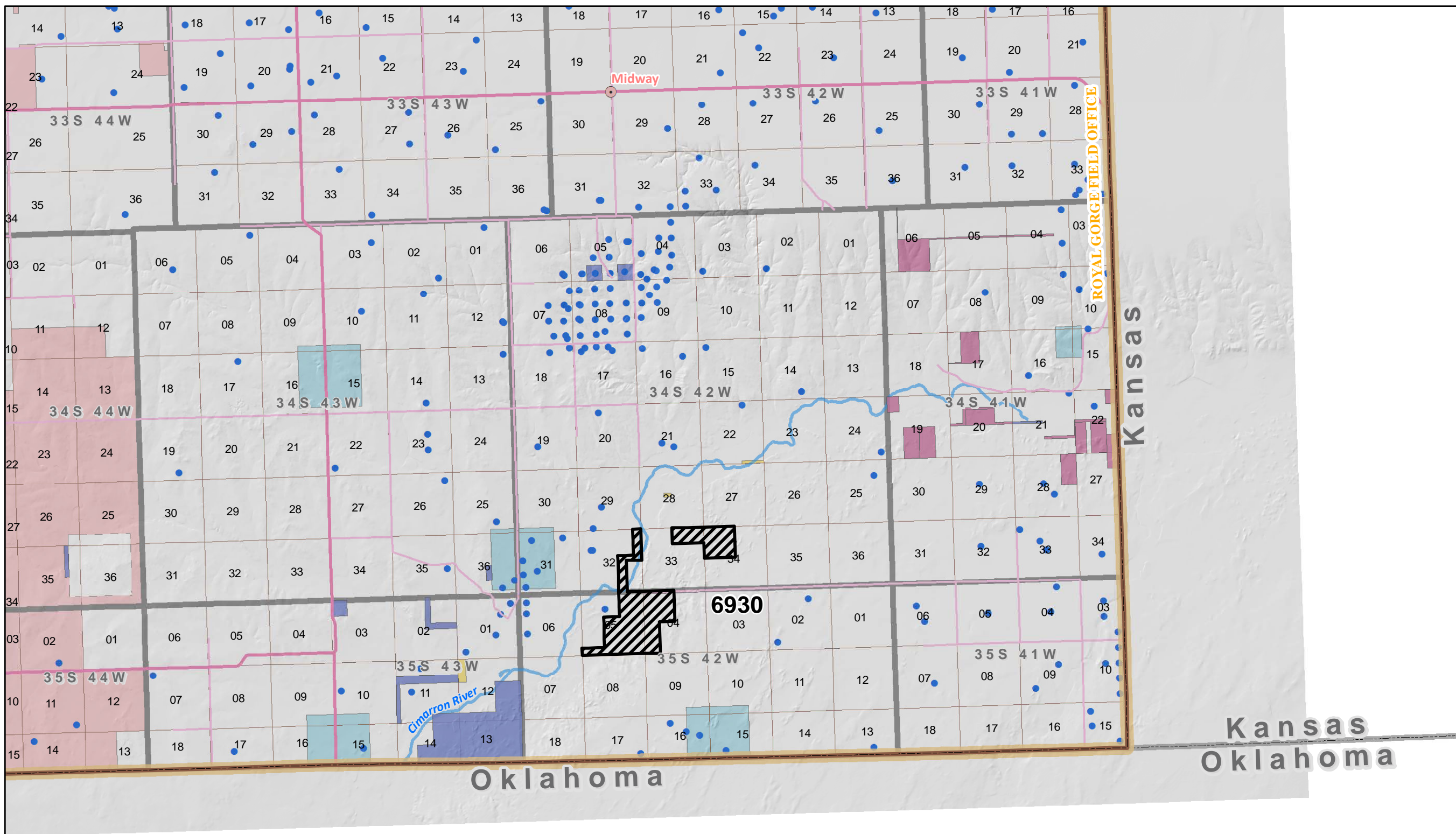
**Map Page Location
Page Number 10**

ROYAL GORGE FIELD OFFICE



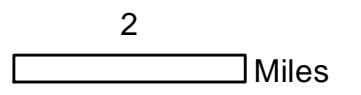


NOTE TO MAP USERS
No warrantee is made by the Bureau of Land Management as to the accuracy, reliability, or completeness of the data layers shown on this map. The official land records should be checked for the current status on any specific tract of land.



Legend

- USA State Boundaries
- BLM Field Office Areas
- Recommended Oil & Gas Sale Status**
- Deferral
- COGCC Oil and Gas Well Locations
- Oil and Gas Leases**
- Non-Producing Leases
- Producing Leases
- Bureau of Land Management
- Private
- State
- Bankhead-Jones Land Use Lands
- Township & Range
- Sections
- CDOT Local Roads
- Streams
- USGS Cities and Towns



**Map Page Location
Page Number 11**

ROYAL GORGE FIELD OFFICE

