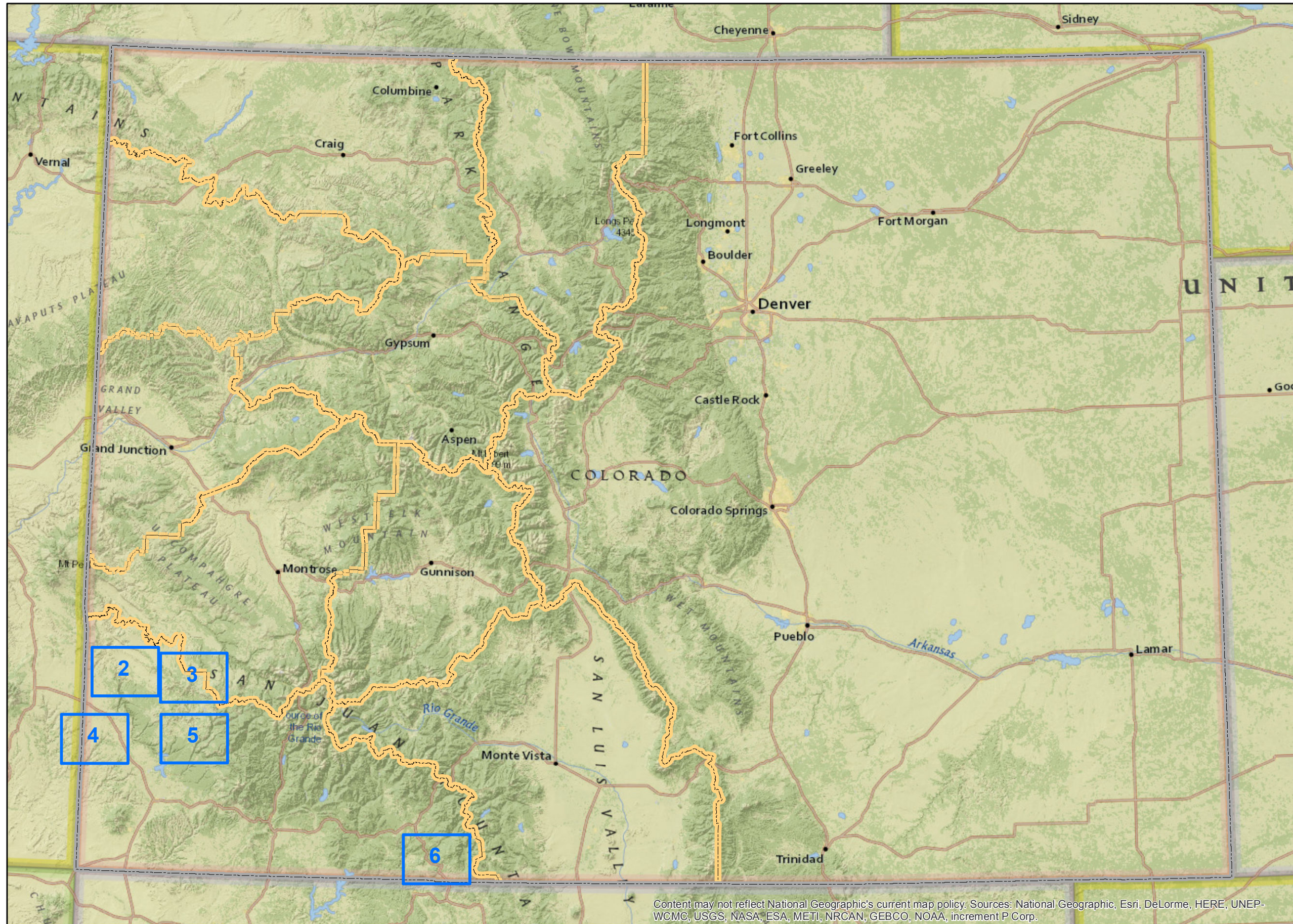


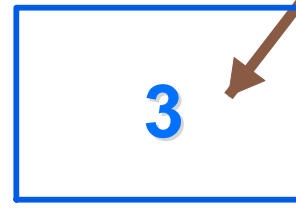
BLM Competitive Oil and Gas Lease Sale February, 2017



Legend

- Selectable Map Pages
- State Boundary
- BLM Field Office Boundaries

Please click on the Close Up Map Pages to see more detail.



3 / 11

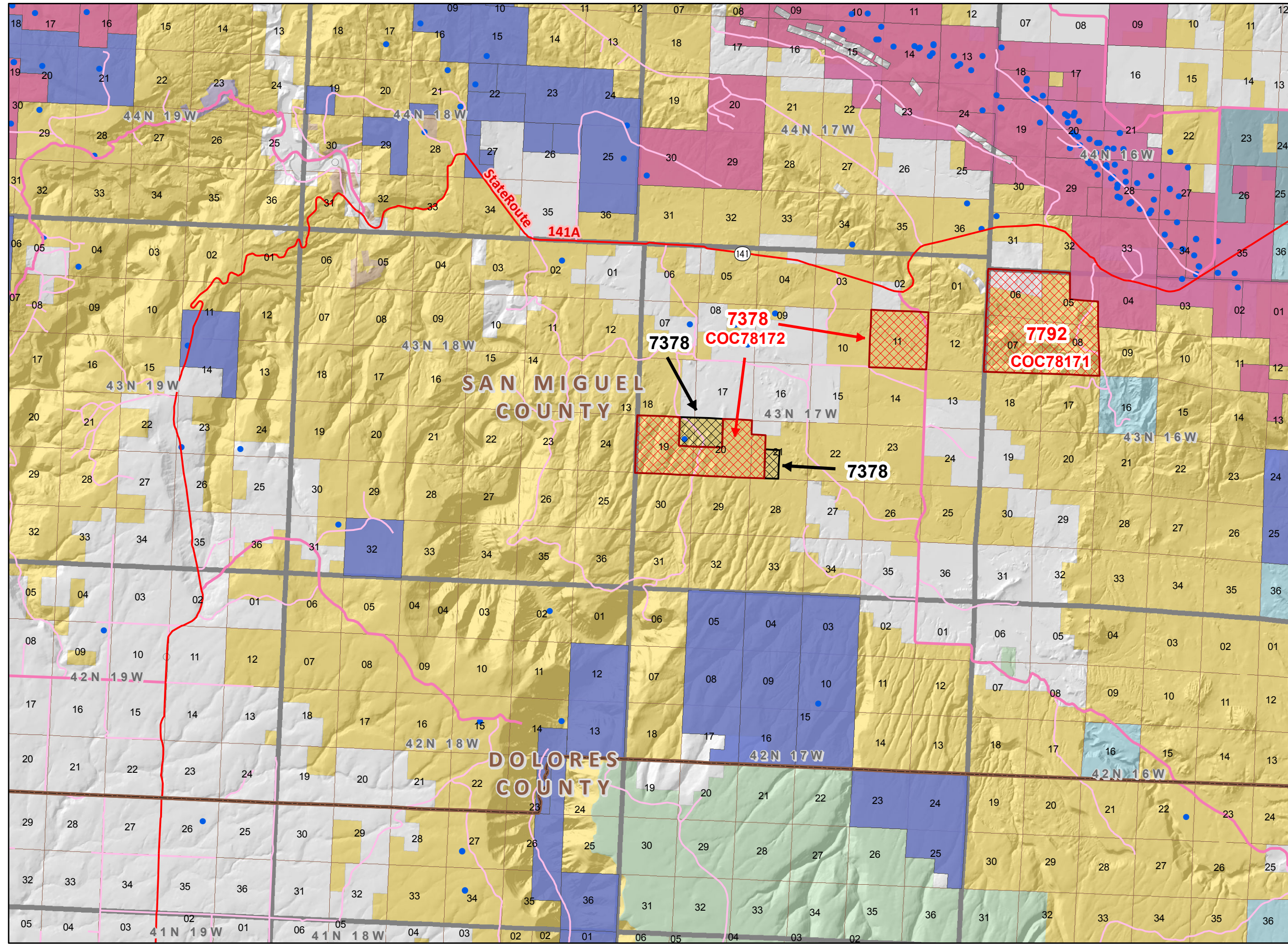
↑

Click on the Page Navigation Tools to return to this Index map on Page 1.

**Bureau of Land Management
Competitive Oil & Gas Lease Sale
February, 2017**



NOTE TO MAP USERS
No warrantee is made by the Bureau of Land Management as to the accuracy, reliability, or completeness of the data layers shown on this map. The official land records should be checked for the current status on any specific tract of land.

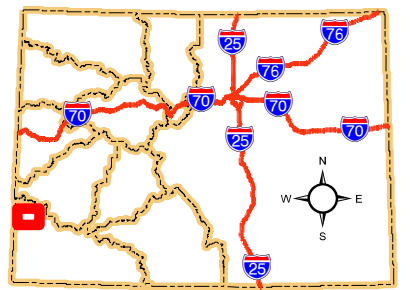


Legend

- BLM Field Office Areas Boundaries
- Oil & Gas Sale Status**
 - Deferral
 - Sale
- COGCC Oil and Gas Well Locations
- Oil and Gas Leases**
 - Non-Producing Leases
 - Producing Leases
- County Boundaries
- Township & Range
- Sections
- Bureau of Land Management
- National Park Service
- Other Federal
- Private
- State
- State, County, City; Areas
- US Forest Service
- Lakes and Reservoirs
- Minor Highways
- CDOT Local Roads
- Other Cities and Towns

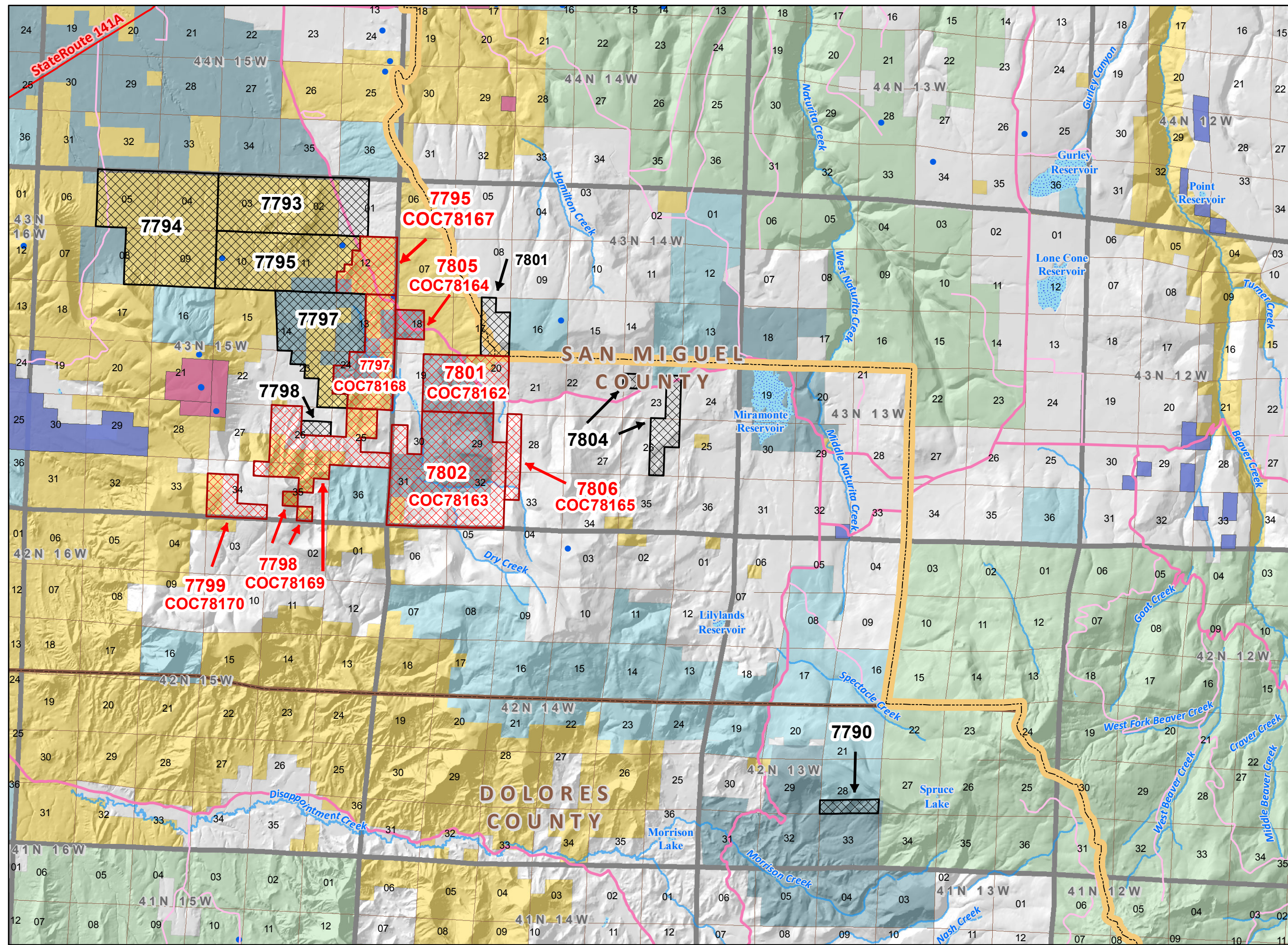


Map Page Location
Page Number 2
TRES RIOS FIELD OFFICE



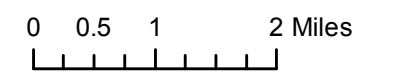


NOTE TO MAP USERS
No warrant is made by the Bureau of Land Management as to the accuracy, reliability, or completeness of the data layers shown on this map. The official land records should be checked for the current status on any specific tract of land.

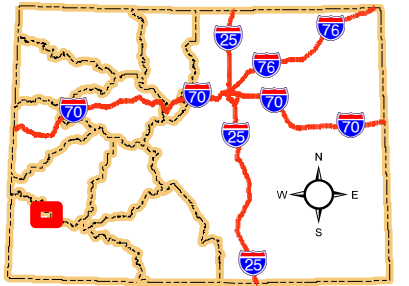


Legend

- BLM Field Office Areas Boundaries
- Oil & Gas Sale Status**
 - Deferral
 - Sale
- COGCC Oil and Gas Well Locations
- Oil and Gas Leases**
 - Non-Producing Leases
 - Producing Leases
- County Boundaries
- Township & Range
- Sections
- Bureau of Land Management
- Private
- State
- State, County, City; Areas
- US Forest Service
- Lakes and Reservoirs
- Minor Highways
- CDOT Local Roads
- Streams



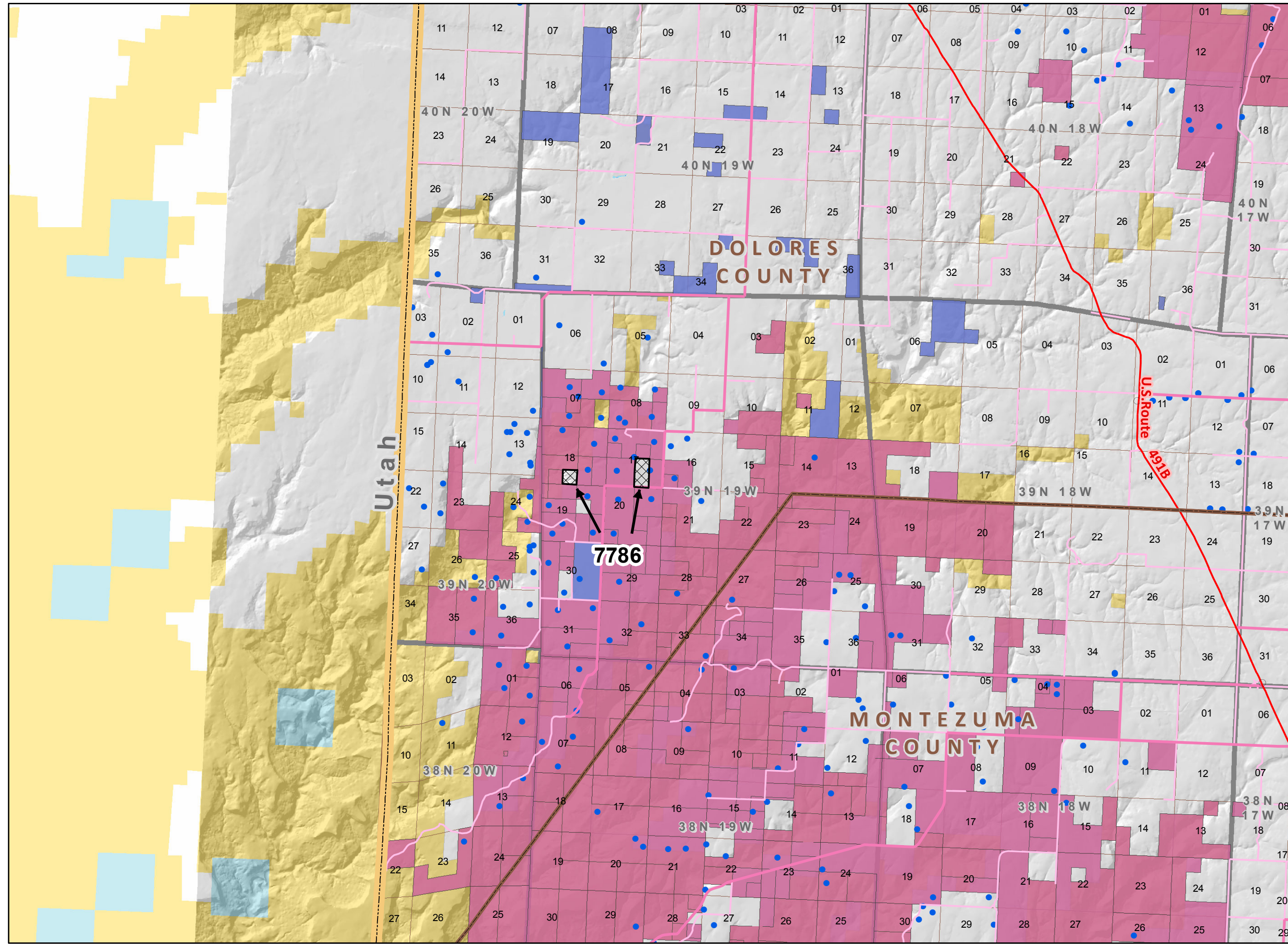
Map Page Location
Page Number 3
TRES RIOS FIELD OFFICE



**Bureau of Land Management
Competitive Oil & Gas Lease Sale
February, 2017**



NOTE TO MAP USERS
No warrantee is made by the Bureau of Land Management as to the accuracy, reliability, or completeness of the data layers shown on this map. The official land records should be checked for the current status on any specific tract of land.

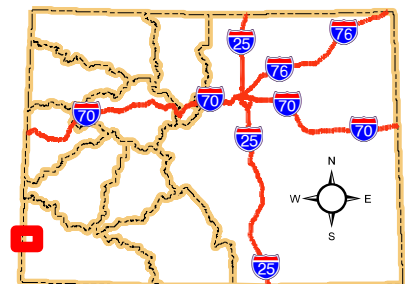


Legend

- BLM Field Office Areas Boundaries
- Oil & Gas Sale Status**
- Deferral
- COGCC Oil and Gas Well Locations
- Oil and Gas Leases**
- Non-Producing Leases
- Producing Leases
- County Boundaries
- Township & Range
- Sections
- Bureau of Land Management
- Private
- Lakes and Reservoirs
- Minor Highways
- CDOT Local Roads
- USA State Boundaries
- Other Cities and Towns

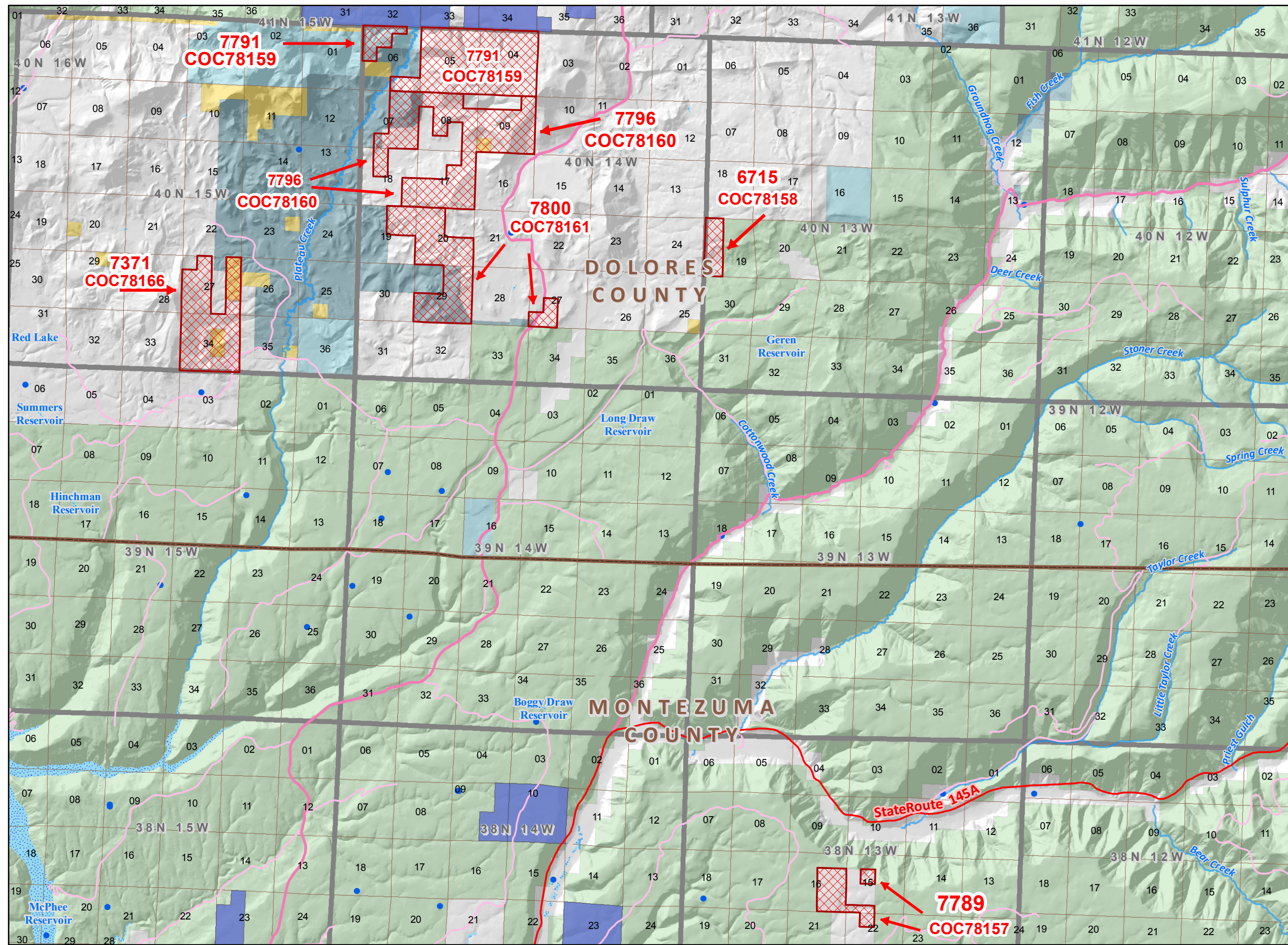


Map Page Location
Page Number 4
TRES RIOS FIELD OFFICE





NOTE TO MAP USERS
No warrant is made by the Bureau of Land Management as to the accuracy, reliability, or completeness of the data layers shown on this map. The official land records should be checked for the current status on any specific tract of land.

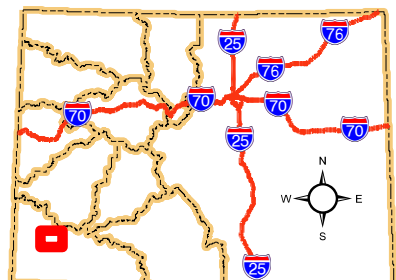


Legend

- BLM Field Office Areas Boundaries
- Oil & Gas Sale Status**
- Sale
- COGCC Oil and Gas Well Locations
- Oil and Gas Leases**
- Non-Producing Leases
- County Boundaries
- Township & Range
- Sections
- Bureau of Land Management
- Other Federal
- Private
- State
- State, County, City; Areas
- US Forest Service
- Lakes and Reservoirs
- Minor Highways
- CDOT Local Roads
- Streams
- Other Cities and Towns



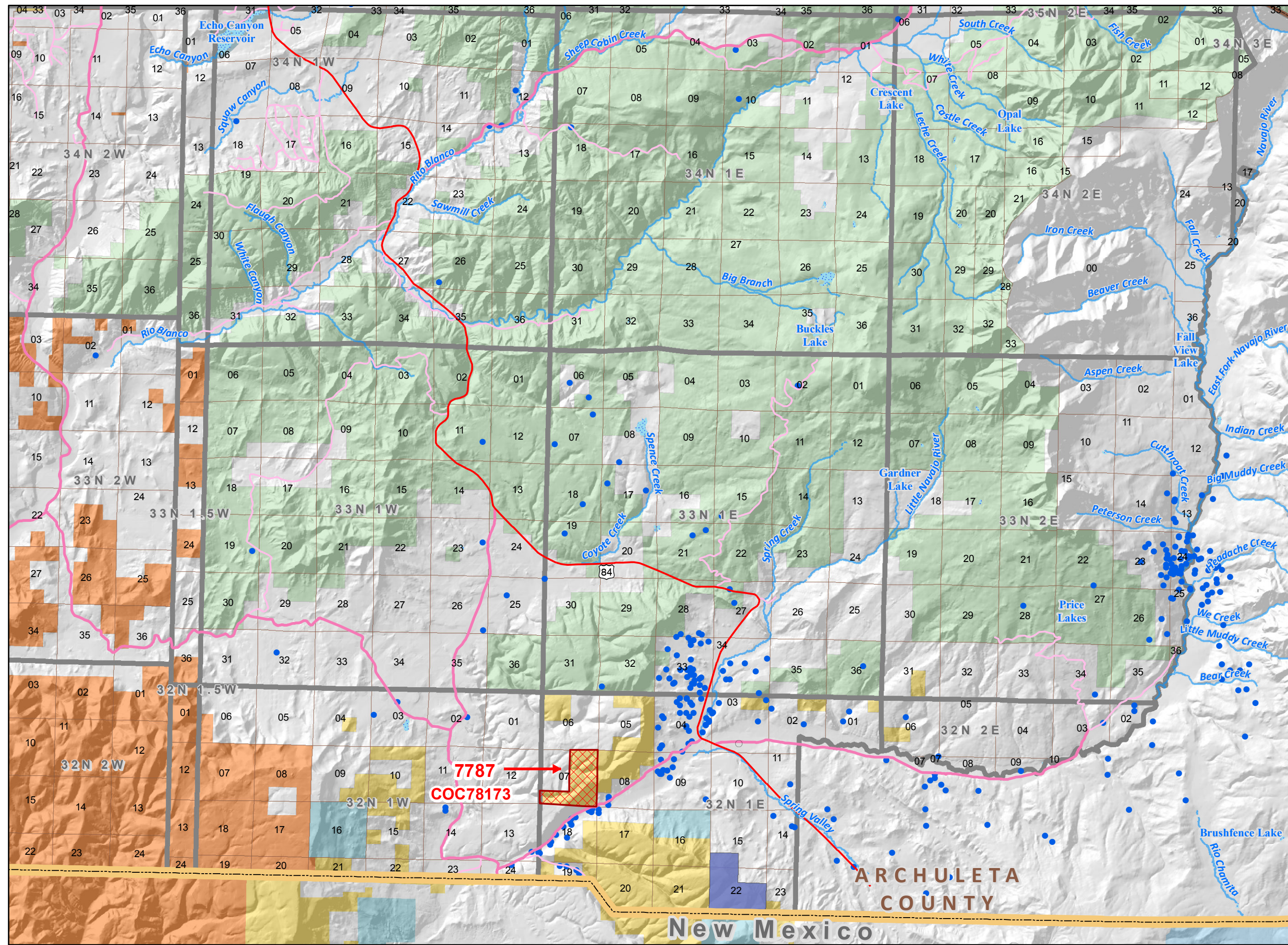
Map Page Location
Page Number 5
TRES RIOS FIELD OFFICE



**Bureau of Land Management
Competitive Oil & Gas Lease Sale
February, 2017**



NOTE TO MAP USERS
No warrantee is made by the Bureau of Land Management as to the accuracy, reliability, or completeness of the data layers shown on this map. The official land records should be checked for the current status on any specific tract of land.



Legend

- BLM Field Office Areas Boundaries
- Oil & Gas Sale Status**
- Sale
- COGCC Oil and Gas Well Locations
- Oil and Gas Leases**
- Non-Producing Leases
- County Boundaries
- Township & Range
- Sections
- Bureau of Land Management
- Indian Reservation
- Private
- State
- State, County, City; Areas
- US Forest Service
- Lakes and Reservoirs
- Minor Highways
- CDOT Local Roads
- Streams
- USA State Boundaries
- Other Cities and Towns



Map Page Location
Page Number 6
TRES RIOS FIELD OFFICE

