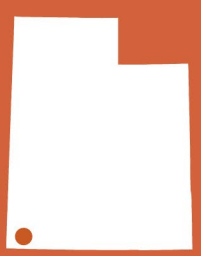


Sand Mountain Open OHV Area

BLM St. George Field Office | 345 E. Riverside, Drive, St. George, UT | 435-688-3200

This map is geo-referenced



Roads

- State Highway
- Improved Surface
- Unimproved Surface, 4WD

Trails

- OHV
- Hiking
- Intermittent Stream, Unreliable Water Source

Land Manager

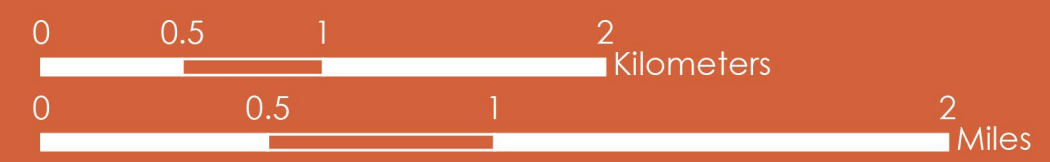
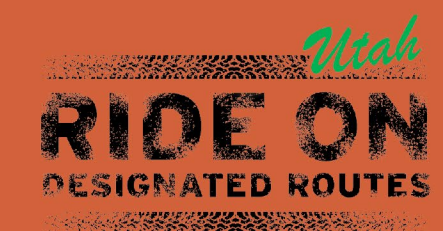
- Bureau of Land Management (BLM)
- State
- State Park
- Private

Visitor Information

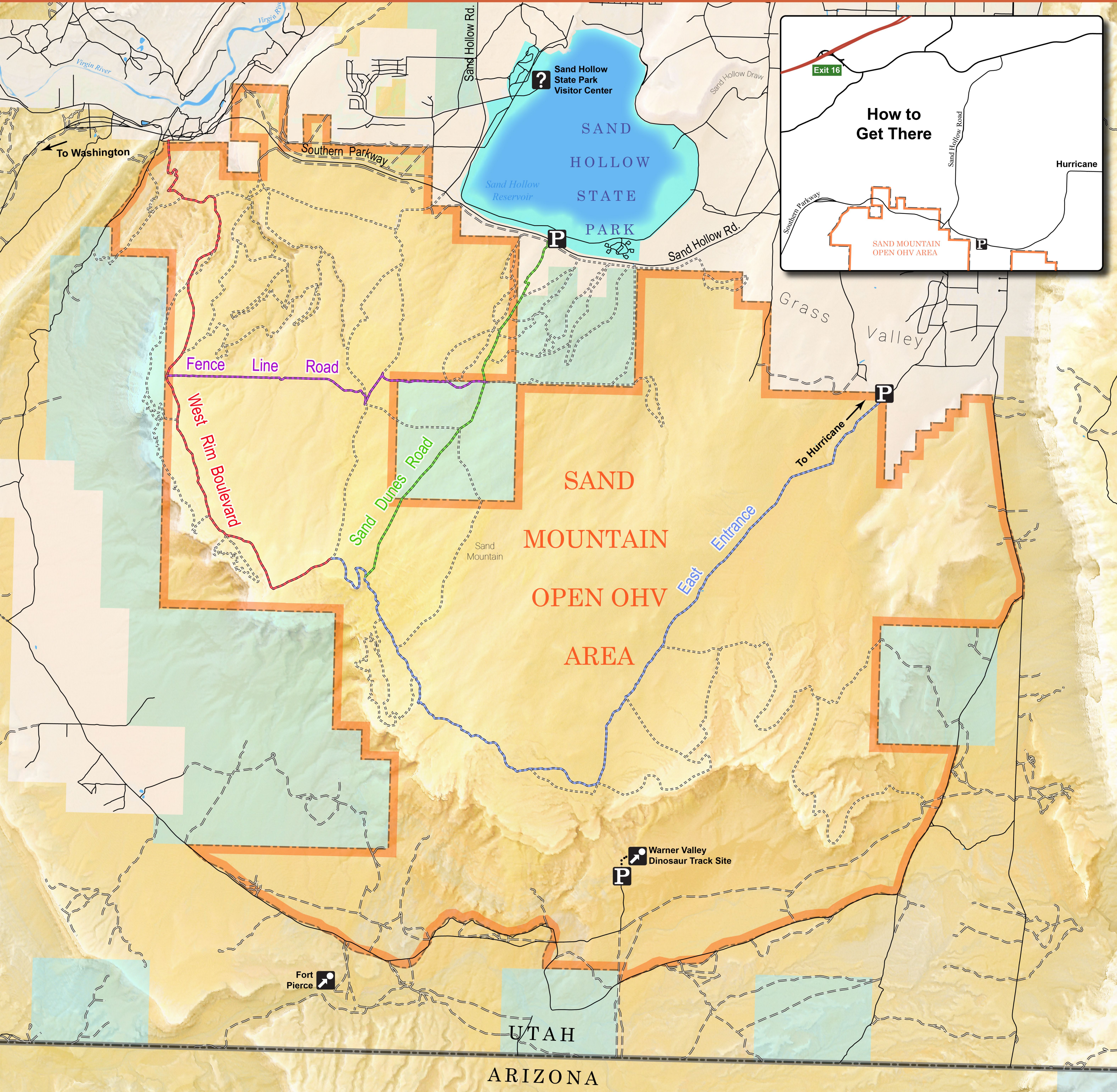
- Visitor Information
- Point of Interest
- Parking
- Trailhead

Sand Mountain Open OHV Area

- State Line



* DISCLAIMER: This information is provided as a courtesy only, no warranty, expressed or implied, is made as to the current validity of this information. Trail ratings are only intended to serve as general overviews of difficulty levels, and may vary from the trail ratings in other areas you are familiar with. Weather events can quickly alter trail conditions and increase difficulty levels, be prepared for changing conditions at all times. Unsecured, abandoned mines may be present near the trails-for your safety, never enter abandoned mines. The BLM is not liable for any incidents arising from the use of the information presented here-each user is solely responsible for their own safety while enjoying their public lands. Produced May 2016.



How to Get There