

Year 2009 Inventory Unit Number/Name: 13-83, Satellite Island Rocks

FORM 1

DOCUMENTATION OF BLM WILDERNESS INVENTORY FINDINGS ON RECORD:

1. Is there existing BLM wilderness inventory information on all or part of this area?

No X (Go to Form 2) Yes (if more than one unit is within the area, list the names/numbers of those units.):

a) Inventory Source: Wilderness Inventory Oregon and Washington 1980

b) Inventory Unit Name(s)/Number(s):

c) Map Name(s)/Number(s): Navigational Chart 18421

d) BLM District(s)/Field Office(s): Spokane, Wenatchee, San Juan Islands Field Station

2. BLM Inventory Findings on Record:

Existing inventory information regarding wilderness characteristics (if more than one BLM inventory unit is associated with the area, list each unit and answer each question individually for each inventory unit):

Existing inventory information regarding wilderness characteristics¹:

Inventory Source: Wilderness Inventory Oregon and Washington 1980

Unit#/Name	Size (historic acres)	Natural Condition? Y/N	Outstanding Solitude? Y/N	Outstanding Primitive & Unconfined Recreation? Y/N	Supplemental Values? Y/N

FORM 2

Use additional pages as necessary

**DOCUMENTATION OF CURRENT WILDERNESS INVENTORY
CONDITIONS**

a. Unit Number/Name: 13-83, Satellite Island Rocks

(1) Is the unit of sufficient size?

Yes No Island Rock Rocks

[State the BLM acreage of the unit. Describe the boundaries of the unit (roads, property lines, etc.) If the area meets one of the exceptions to the size criterion, check "Yes" and describe the exception. If more than one inventory unit is involved, list the acreage in each and evaluate each unit/subunit separately. Complete the analysis for (1), (2), (3),(4) and (5) for each unit or sub-unit. If you check "No" above, check "N/A" (Not Applicable) in the remaining boxes below, and you need not provide additional evaluation for the unit or subunit. Use additional space as necessary.]

DESCRIPTION OF CURRENT CONDITIONS: (Include land ownership, location, topography, vegetation features and summary of major human uses/activities).

Ownership: BLM ownership.

Location: N48 40' 39.70", W123 11' 5.706", N48 40' 36.94", W123 11' 12.008", N48 40' 35.458", W123 11' 5.098", N48 40' 38.472", W123 10' 59.289"

Topography: Satellite Island Rocks are a grouping of flat, rocks approximately 1 acre in size. The rocks are predominately submerged at higher tides. The larger rocks are approximately 4' feet above sea level.

Vegetation Features: Satellite Island Rocks support a diverse variety of seaweeds. The larger rocks supports lichens.

Major human uses/ activities: Recreational boating both motorized and non-motorized does occur in the area. Wildlife viewing is excellent in this area for seabirds, marine mammals and other species. Sea Kayaking is also excellent in this area. Satellite Island Rocks are located within 30' feet of Satellite Island.

Other items: Access is best using small non motorized human powered water craft due to numerous submerged rocks during higher tides. During inventory the smaller rocks were submerged. Washington State, San Juan Marine Park, Stuart Island Park, is nearby within 1/2 mile and area is a highly popular destination during the summer. Satellite rocks are an important resource for the Island Oil Spill Association as designated anchor points to protect the harbor from spill impacts.

(2) Is the unit in a natural condition?

Yes No N/A

Description: Satellite Island Rocks appear natural and in their natural condition.

(3) Does the unit (or the remainder of the unit if a portion has been excluded due to unnaturalness and the remainder is of sufficient size) have outstanding opportunities for solitude?

Yes No N/A

Description: Satellite Island Rocks provide outstanding opportunities for solitude. The undeveloped shoreline of Satellite Island and the limited developments of Stuart Island do not dominate the landscape and the expansive Boundary pass to the north offer outstanding opportunities for solitude.

(4) Does the unit (or the remainder of the unit if a portion has been excluded due to unnaturalness and the remainder is of sufficient size) have outstanding opportunities for primitive and unconfined recreation?

Yes No N/A

Description: Motorized and non-motorized boating occurs in the area and is excellent. Outstanding opportunities for primitive and unconfined recreation cannot be found on Satellite Island Rocks. Although Sea kayaking, tide pooling, wildlife viewing and photography are excellent the limited size of the rocks do not offer outstanding opportunities for primitive and unconfined recreation.

(5) Does the unit have supplemental values?

Yes No N/A

Description: Supplemental values for Satellite Island Rocks include a dynamic marine ecological system. The geology of the rocks are part of a unique formation regarding Washington State. Other identified values for the Rocks are wildlife, scientific and scenic.

Summary of Findings and Conclusion

Unit Name and Number: 13-83, Satellite Island Rocks

Summary

Results of Analysis:

1. Does the area meet any of the size requirements? Yes No
2. Does the area appear to be natural? Yes No

3. Does the area offer outstanding opportunities for solitude or a primitive and unconfined type of recreation? Yes No NA

4. Does the area have supplemental values? Yes No NA

Conclusion

Check One:

The area—or a portion of the area—has wilderness character.

The area does not have wilderness character.

Prepared by:

Team Members:

Jerry Magee, Wilderness/ NLCS Lead, 10.23.09

Bob Wick, P&C, CO Coastal National Monument, Northern Coordinator, 10.23.09

Nick Teague, Outdoor Recreation Planner, 10.23.09

(Names, Titles, Date)

Approved by:

Field Manager

Linda J. Cates - Markle 9/25/12

Date

This form documents information that constitutes an inventory finding on wilderness characteristics. It does not represent a formal land use allocation or a final agency decision subject to administrative remedies under either 43 CFR parts 4 or 1610.5-2.

**H-6300-1-WILDERNESS INVENTORY MAINTENANCE
IN BLM OREGON/WASHINGTON**

**APPENDIX D – PHOTO LOG
(modify form as needed)**

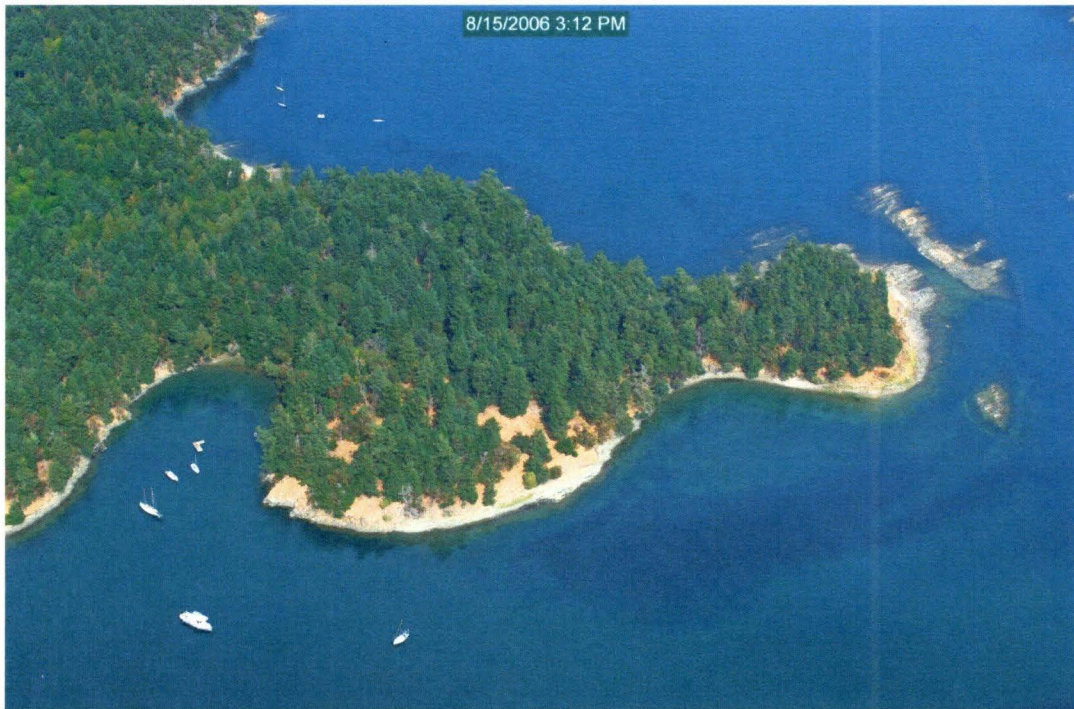
Photographer(s): _ WA Department of Ecology, Bob Wick

Inventory Area Name & No.: 13-83, Satellite Island Rocks

Date	Frame #	Camera Direction	Description	GPS/UTM Location	Township	Range	Sec.
08.15.2006	14926	Oblique, N	Satellite Rocks, Satellite Island's eastern point	N48 40' 39.70", W123 11' 5.706", N48 40' 36.94", W123 11' 12.008", N48 40' 35.458", W123 11' 5.098", N48 40' 38.472", W123 10' 59.289"	T37N	R4W	Sec.27
08.15.2006	15033	Oblique, ESE	Satellite Rocks, Satellite Island's eastern point	N48 40' 39.70", W123 11' 5.706", N48 40' 36.94", W123 11' 12.008", N48 40' 35.458", W123 11' 5.098", N48 40' 38.472", W123 10' 59.289"	T37N	R4W	Sec.27
08.15.2006	15034	Oblique, ENE	Satellite Rocks, Satellite Island's eastern point	N48 40' 39.70", W123 11' 5.706", N48 40' 36.94", W123 11' 12.008", N48 40' 35.458", W123 11' 5.098", N48 40' 38.472", W123 10' 59.289"	T37N	R4W	Sec.27
10.23.2009	2581	S	Satellite Rocks,	N48 40' 39.70", W123 11' 5.706", N48 40' 36.94", W123 11' 12.008", N48 40' 35.458", W123 11' 5.098", N48 40' 38.472", W123 10' 59.289"	T37N	R4W	Sec.27
10.23.2009	2586	SW	Satellite Rocks,	N48 40' 39.70", W123 11' 5.706", N48 40' 36.94", W123 11' 12.008", N48 40' 35.458", W123 11' 5.098", N48 40' 38.472",	T37N	R4W	Sec.27

				W123 10' 59.289"			

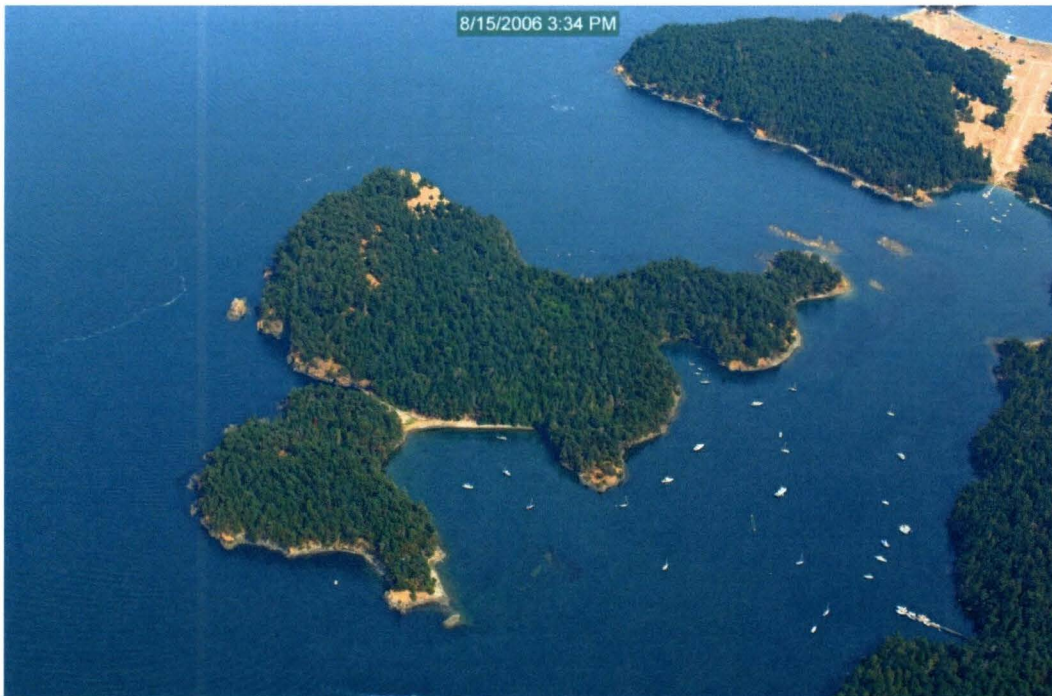
7/3/2007



08.15.2006	14926	Oblique, N	Satellite Rocks, Satellite Island's eastern point	N48 40' 39.70", W123 11' 5.706", N48 40' 36.94", W123 11' 12.008", N48 40' 35.458", W123 11' 5.098", N48 40' 38.472", W123 10' 59.289"	T37N	R4W	Sec.27
------------	-------	---------------	---	---	------	-----	--------



08.15.2006	15033	Oblique, ESE	Satellite Rocks, Satellite Island's eastern point	N48 40' 39.70", W123 11' 5.706", N48 40' 36.94", W123 11' 12.008", N48 40' 35.458", W123 11' 5.098", N48 40' 38.472", W123 10' 59.289"	T37N	R4W	Sec.27
------------	-------	-----------------	---	---	------	-----	--------



15.2006	15034	Oblique, ENE	Satellite Rocks, Satellite Island's eastern point	N48 40' 39.70", W123 11' 5.706", N48 40' 36.94", W123 11' 12.008",	T37N	R4W	Sec.27
---------	-------	-----------------	---	---	------	-----	--------

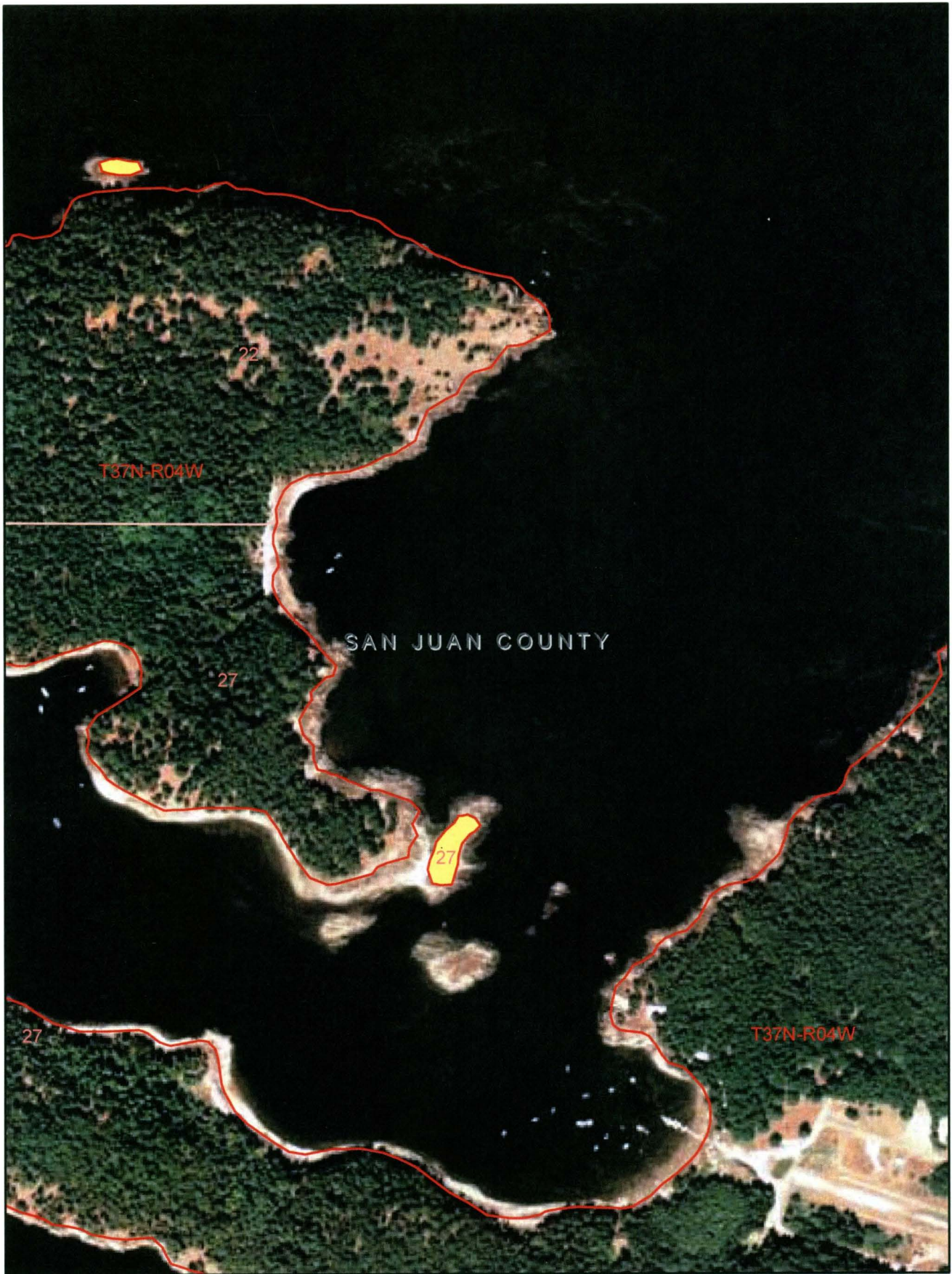
				N48 40' 35.458", W123 11' 5.098", N48 40' 38.472", W123 10' 59.289"			
--	--	--	--	--	--	--	--



10.23.2009	2581	S	Satellite Rocks,	N48 40' 39.70", W123 11' 5.706", N48 40' 36.94", W123 11' 12.008", N48 40' 35.458", W123 11' 5.098", N48 40' 38.472", W123 10' 59.289"	T37N	R4W	Sec.2
------------	------	---	------------------	---	------	-----	-------



10.23.2009	2586	SW	Satellite Rocks,	N48 40' 39.70", W123 11' 5.706", N48 40' 36.94", W123 11' 12.008", N48 40' 35.458", W123 11' 5.098", N48 40' 38.472", W123 10' 59.289"	T37N	R4W	Sec.27
------------	------	----	------------------	---	------	-----	--------



13-83, Satellite Island Rocks, N 48 40' 39.702", W 123 11' 5.706"