



# S1 Mobile Mapper for Android

## Release Notes



### Version 5.4 (Build 5.4.017) – Released 12/15/2024

#### Hot Fix

This hot fix addresses an issue with Bluetooth GPS devices crashing the application, more specifically, the Xcover 6 Pro & S22 series devices running Android 14.

### Version 5.4 (Build 5.4.012) – Released 08/09/2024

#### Hot Fix & Updates

This hot fix addresses an issue that arose from other updates, which was causing the S1 Mobile Mapper app to crash when enabling Tracklogs.

This hot fix also includes a related bug fix that affected feature service editing when using stream mode. Both Tracklogs and Feature editing in streaming mode now work as expected.

### Version 5.4 (Build 5.4.011) – Released 07/22/2024

#### Hot Fix & Updates

This hot fix addresses an issue that arose due to an Esri update. The update changed the way items were called via mobile applications with a sharing link that affected downloading user created basemaps to the S1 Mobile Mapper application.

There are also a few other fixes included to correct an issue with the repeat attribute function and several underlying Google policy update requirements.

### Version 5.4 (Build 5.4.006) – Released 06/05/2024

#### Hot Fix & Updates

This build addresses a hotfix to correct a Sync & Submit duplicate download issue. A visual spinner icon was added to show the download progress and a pop-up note to inform users that the download was initiated.

This build also includes the updated Agency and Public User Guides and Quick Help documents for 2024 on the Help menu in the S1 Mobile Mapper app.

## **Version 5.4 (Build 5.4.005) – Released 05/01/2024**

### **Hot Fix**

This build was a hotfix for an issue found with downloading Agency Basemaps as a public user or agency user.

## **Version 5.4 (Build 5.4.003) – Released 03/20/2024**

### **Hot Fix**

This build was a hotfix for correctly downloading user created basemap tile packages from BLM ArcGIS Online (AGOL) in these formats, TPK, TPKX, and GeoTiff files.

Also, there were updates to the text within the S1 Mobile app, for example the word Webmap needed to be corrected to Web Map according to Esri specifications.

## **Version 5.4 (Build 5.4.002) – Released 03/04/2024**

### **Major Release**

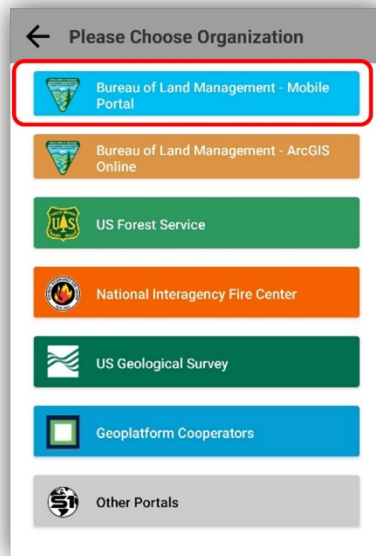
This build focuses mostly on minor bug fixes to enhance support for custom S1 BLM Sync and Submit workflows. There are also many other small underlying code updates to fix minor issues with the S1 application. See below for the list of pertinent updates.

#### **Bugs/Issues fixed:**

- Resolved issue of the GPS location buffer (the Buffer PG – GPS tool) was not auto populating the Coordinate Source attribute field correctly with “GPS” when the GPS was being used.
- Resolved issue where users were seeing an expired credentials warning when they were actually not expired.

#### **User Interface (UI) updates**

- Updated text in the Buffer Geometry tool UI to instruct the user to “Select a polygon target layer on the next screen to buffer geometry” when the create features menu pops up.
- UI Enhancement text updated reference to ArcGIS Online in Search for Content textbox and Download Data Groups menu when user was logged into other portals.
- UI Enhancement of the Organization login menu to include a new dedicated BLM – Mobile Portal login option.



- Updated app support for .vtpk files in the publicly shared /Agency created basemaps downloads option (older .tpk basemaps in this location will be deprecated once build 5.4.002 is available) and only the new .vtpk format basemap files will be available for download after that.
  - Important note to users with .tpk files already downloaded to their device; please remove any (BLM) agency basemaps previously downloaded with an earlier version of the S1 Mobile Mapper application. Then download the new .vtpk version of those maps available via the “Agency Authored Basemaps” option.



- Updated the S1 Mobile app to remove reference to USDA Forest Service development support.
- Also includes some other small grammatical fixes and underlying code cleanup.

**Version 5.3 (Build 5.3.032) – Released 9/08/2023**

Hot Fix

This build addresses an issue found with default values not being honored if a user did not pick a specific edit template for a layer with subtypes. Users now must pick one of the edit template options from the subtype list in the pulldown.

### **Version 5.3 (Build 5.3.031) – Released 8/28/2023**

#### **Hot Fix**

This build focuses mostly on adding support for BLM staff to use S1 sync and submit corporate mobile themes in the new mobile portal. It also addresses some small bug fixes, default value upgrades, and more efficient basemap downloads for portals.

#### **Organizational Users:**

- Added support for Oracle based corporate field data collection themes in the new mobile portal.
- ESRI Basemap downloads are now available via BLM mobile portal logins.
- Updated default streaming distance from 3 to 12 feet.
- Updated text wrapping in Edit Features drop down lists to accommodate for long titled data.
- Fixed query issue when populating Administrative Unit drop down list in Sync and Submit Version menu.
- Organization Log off message now displays aliases rather than proper URL when user signs off.
- Exif info for geotagged photos updated to include Altitude and camera direction added to comments field.
  - Direction degrees changed from ESRI method to existing Azimuth value.
  - User Comment field format updated, now contains Azimuth and Altitude.

### **Version 5.3 (Build 5.3.025) – Released 4/21/2023**

#### **Hot Fix**

This hotfix addresses an issue found with domain (pick-list) values not text wrapping correctly for long pick-list values. This is the only update to the app with this build.

### **Version 5.3 (Build 5.3.023) – Released 03/31/2023**

#### **Minor Release**

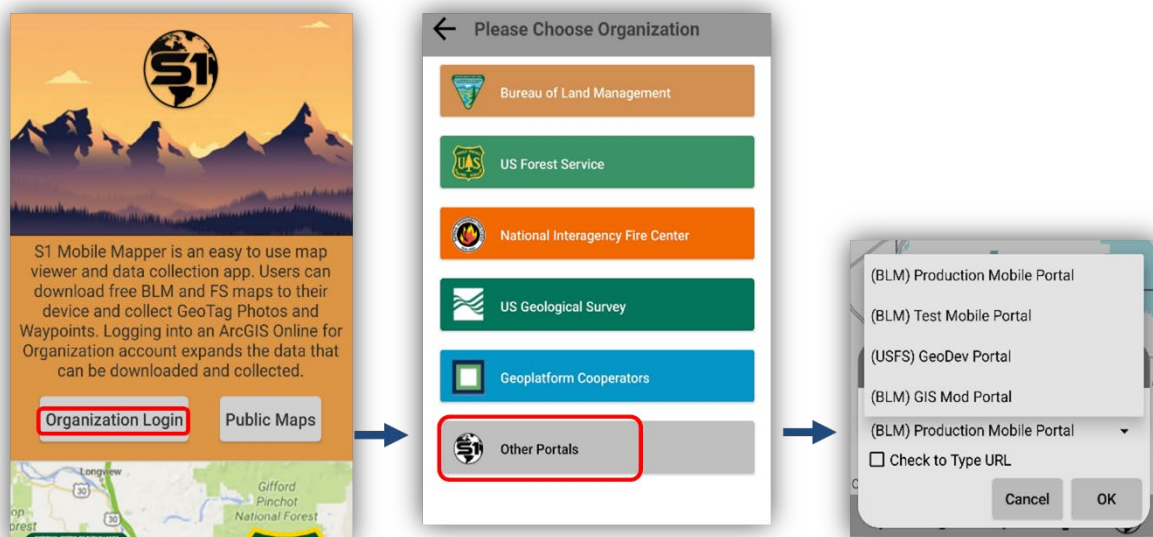
This version release focuses on addressing small bug fixes for a smoother user experience within the S1 Mobile Mapper app mostly within the manage map layers interface. Some development work also focused on adding access to new BLM Mobile Enterprise Portals for

agency users using the custom S1 Mobile Mapper Sync and Submit option. There were also some underlying updates to app code to comply with Google policy and dependency requirements.

## AGOL Organizational Users:

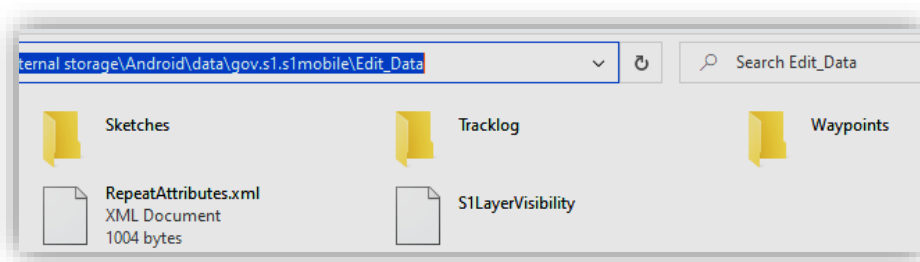
### *User Interface (UI) Changes*

- Removed National Park Service & Other Organizations login options.
- Added updated links in the “Other Portals” login options to include BLM Mobile Test and Production Portals and BLM GIS Mod test Portal.
- Updated USFS Login(s).
  - Main USFS button redirects to AGOL: <https://usfs.maps.arcgis.com>
  - USFS GeoDev Portal login now found under “Other Portals”.



### *Additional “Behind the Scenes” Functionality*

- Added a new folder for S1 sketch files to work like S1 waypoints and tracklogs. Previous version had S1 sketches saved in the waypoints folder.



## Bugs/Issues fixed:

- Fixed issue where map view extent was at times limited to a certain extent.

- Fixed issue where toggling on or off a basemap would zoom the map view to the edit gdb extent.
- Fixed issue where webmap downloads with multiple basemaps were only using the name for the first listed basemap for all basemaps in the mobile map package.
- Updated Geotagged photos exif info to include correct attribution information.
- Fixed issue where user could not initiate streaming data collection mode without first averaging at least one vertex.
- Fixed issue where GPS status bar was showing an incorrect value for elevation.
- Fixed issue with pairing external Bluetooth receivers on devices running Android 12 and 13.
- Multiple bug fixes regarding map extent zooming behavior in the main map view related to basemap and edit gdb extents.
- Resolved several issues related to layer visibility toggles not working correctly.
- Resolved several issues with “Labels” toggles not displaying correctly in manage map layers section of the app.

### Version 5.3 (Build 5.3.008) – Released 04/07/2022

#### Major Release

Version 5.3 significantly rethinks the S1 basemap concept and functionality and offers the user more options and control over managing basemaps for use in the app. Some new AGOL search capability has also been added for agency staff to help find the data they are looking for and provides summary information about the data prior to downloading. Also includes some small grammatical and UI fixes throughout the app.

See descriptions and some short video demos of new features below:

#### All Users:

##### *New Basemaps UI*

- Renamed the S1 Default basemap.
- Consolidated the S1 Basemap menus into one bin and introduced a new UI (User Interface) for managing them; [Demo Video](#)
  - No limit to # of basemaps displayed in the main map view.
  - Long press basemap tile to move up or down in the layer order
  - Toggle on/off for basemap visibility in map view
  - Basemap transparency adjustment on-the-fly (allows user to leverage overlaying basemaps)
  - “Zoom to” & “Delete basemap” options

##### *Layer Support*

S1 Waypoints, Tracklogs, and Sketches can now be exported and shared as geojson format, a more common format that can be viewed using multiple GIS platforms.

- These “GeoJson” files will convert correctly using the standard ArcPro toolbox tool (Json to features) no custom S1 toolbox needed. These GeoJson files also can be dragged and dropped directly into some other mapping applications like Google Earth to display them with no conversion needed.

## **AGOL Organizational Users:**

### *New Functionality*

- Users can now search to locate AGOL content that they have access to in the download data menu and preview item descriptions before downloading the item. [Demo Video](#)
- Added a toggle option to turn Field Maps Smart Form support on/off. [Demo Video](#)
  - Smart Forms support the use of basic Arcade Expression operators and profiles like conditional visibility & creating groups for fields with titles and descriptions.
- Removed the constraint that downloaded map data (edit gdb) must overlap an underlying basemap. There still needs to be one basemap in the map view but is no longer required to overlap that basemap.
- Added a world hillshade option to the Basemap Services download items. This allows the user to choose the extent of project area and download a hillshade to overlay other basemaps in conjunction with the new S1 basemap transparency on-the-fly option.

### [Demo Video](#)

### *UI Enhancements*

- S1 AGOL content tiles in the download data UI now show some summary information about the AGOL item to help identify the correct AGOL item for download. [Demo Video](#)
- The AGOL content type filter in the download UI menu now always defaults back to show all content types when starting a new download. (This used to be remembered between sessions in V5.2 and could lead to users unintentionally filtering content and not seeing what they expected in the search results)

### [YouTube Playlist for all 5.3 demo videos](#)