

HOW TO RECOVER EDIT GDB FROM MOBILE DEVICE

When sync is not working



S1 Mobile Help
2/26/2021

Getting started

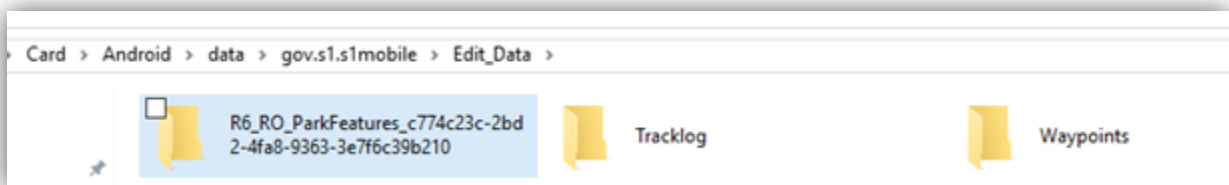
The Copy Runtime Geodatabase to File Geodatabase tool can be used when edits cannot be synchronized on the mobile device. The following describes where the Edit GDB data is stored on the mobile device by the S1 Mobile Mapper Application and how to use the Copy Runtime to File Geodatabase tool.

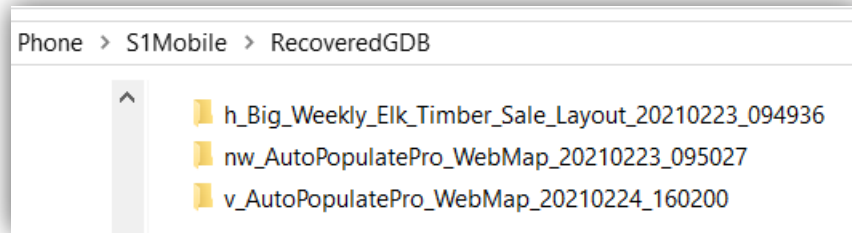
If you like help videos, here is a [link to a video](#) that takes you through the steps outlined in this document.

For information on how to recover data from Collector, please use the following instructions: <https://support.esri.com/en/technical-article/000012460>

Steps to recover a Runtime File Geodatabase:

1. Connect the mobile device to your computer via USB. Ensure File Transfer is enabled by swiping down on your unlocked mobile device.
2. Using Windows Explorer navigate to one of the following locations:
 - a. Device with SD Card:
This PC\[YourDeviceName]\Card\Android\data\gov.s1.s1mobile>Edit_Data
 - b. Device without SD Card:
This PC\[YourDeviceName]\Phone\Android\data\gov.s1.s1mobile>Edit_Data
 - c. For Devices running Android 11 and greater:
This PC\[YourDeviceName]\Phone\S1Mobile\RecoveredGDB
3. Copy the entire Edit Geodatabase (GDB) folder to your computer.





For Devices running **Android 11** and greater

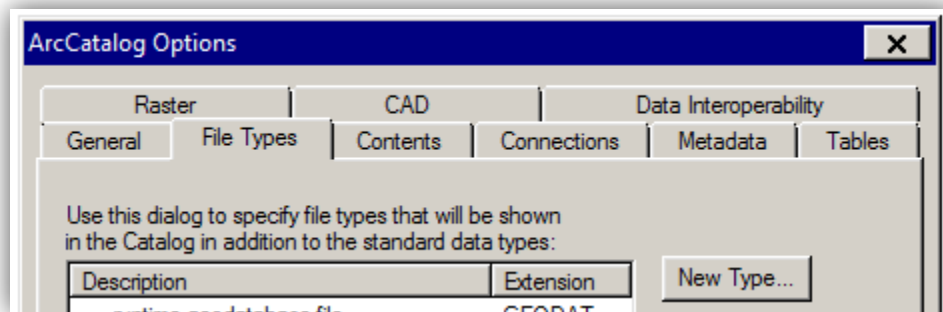
Note: BLM employees that use Citrix, copy this folder to the C:\tmp folder on the Citrix server you are connected. The output file gdb can go to most any other workspace.

Note: FS employees, this cannot run this from the T: drive, it needs to be copied to your local C: drive.

Note: Steps 4-9 only needs to be completed one time, after which ArcCatalog should always display runtime files.

4. Launch **ArcCatalog** 

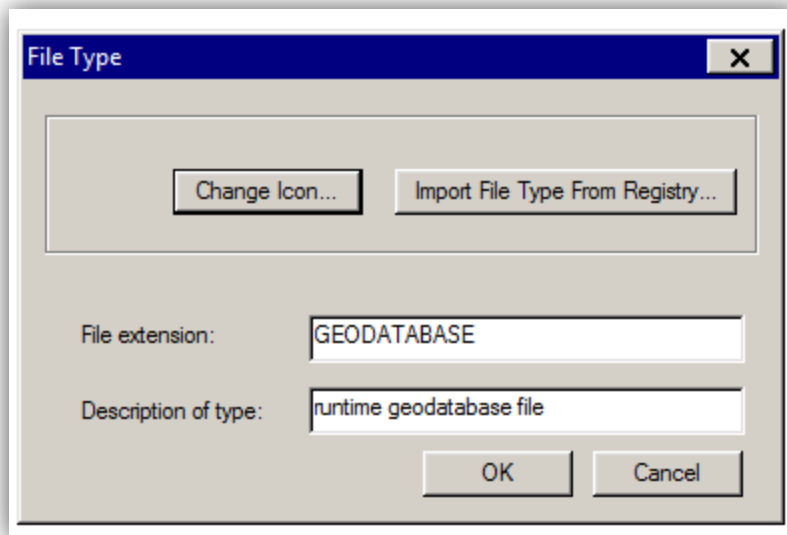
5. Select **Customize -> ArcCatalog Options ->** and tap the **File Types** tab



6. Select the **New Type** tab

7. In the box next to File extension type: **Geodatabase**

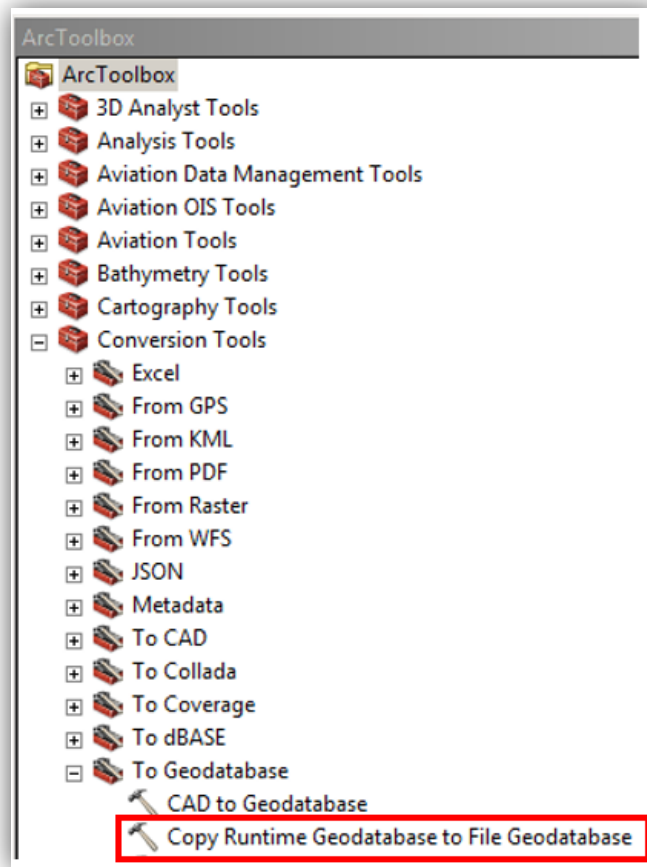
8. For Description type: **runtime geodatabase file**



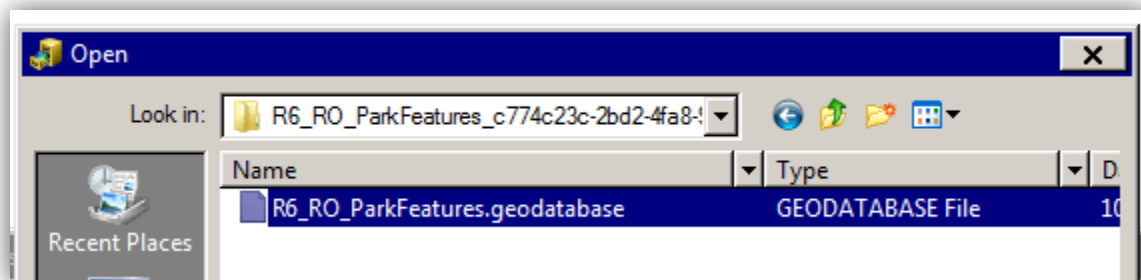
9. Click **OK** to close the File Type Window, and click **Ok** again to close ArcCatalog Options window.

10. Open **ArcToolbox** 

11. Select **Conversion Tools -> To Geodatabase -> Copy Runtime Geodatabase to File Geodatabase**



12. Navigate to the runtime geodatabase file copied from the mobile device to your computer or Citrix C:\ drive and select **Open**.



13. The Output File Geodatabase will automatically be generated for the same file location as the runtime geodatabase. Accept this default location and select **OK**.

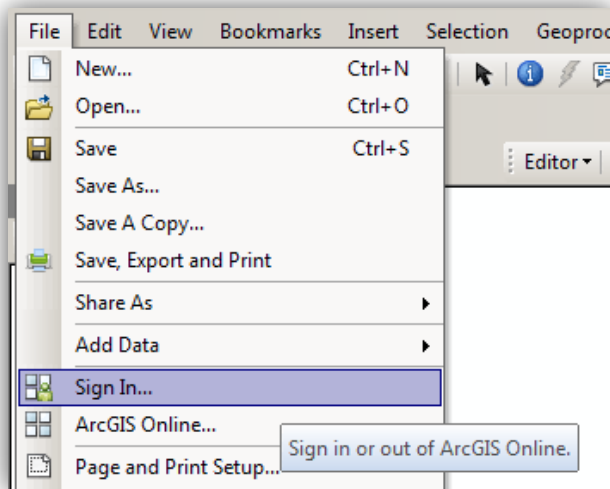
14. After the tool has been successfully run, navigate to the folder where the geodatabase was created. Add the data in the file geodatabase to ArcMap.

Note: Prior to adding to ArcMap, the new file geodatabase can be moved at this point to your preferred file location.

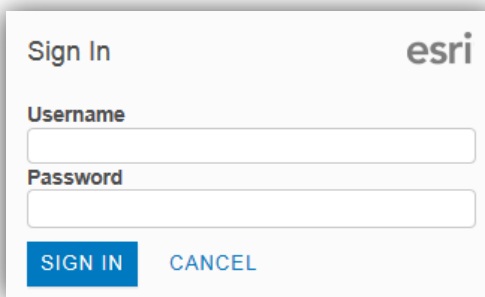
In the steps that follow, you will add the feature service from ArcGIS Online (AGOL) to ArcMap, create a local copy of the feature service for editing, add the data recovered from the runtime GDB to the local copy of the feature service, and sync those edits back to the hosted service on AGOL. Complete these steps only if you wish to add the recovered data back to an existing feature service.

15. Launch ArcMap 

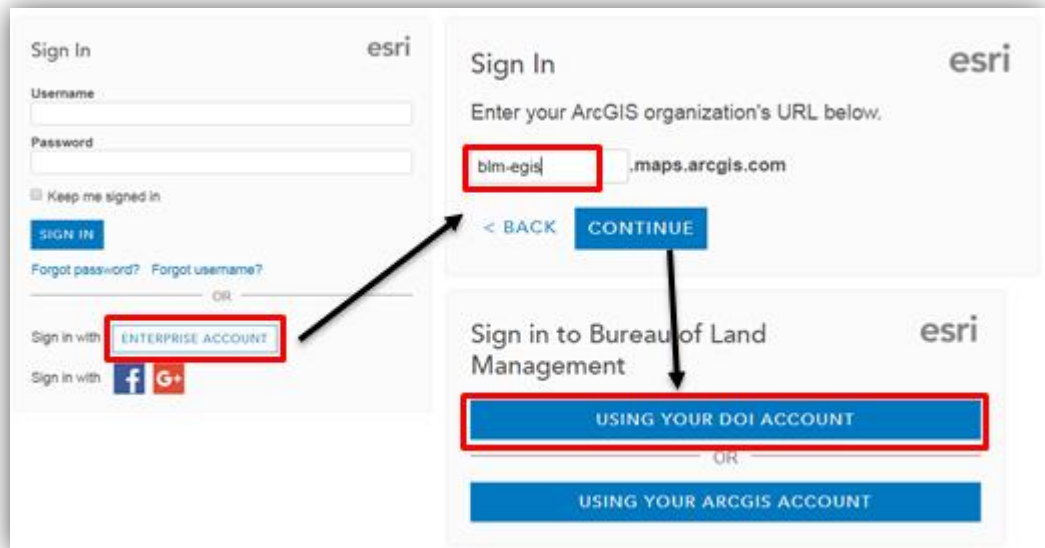
16. Log onto AGOL by selecting **File** -> **Sign In...**



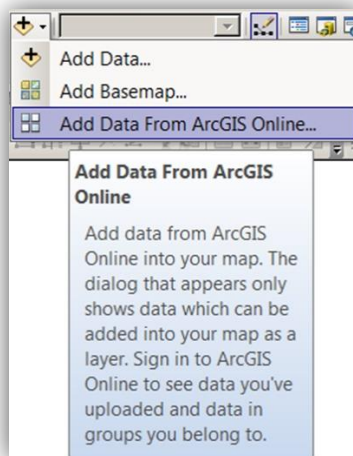
a. *FS users, type in your AGOL Username and Password.*

A screenshot of the ArcGIS Online 'Sign In' dialog box. The dialog has a white background and a grey border. At the top left, it says 'Sign In' and at the top right is the 'esri' logo. Below the logo, there are two input fields: 'Username' and 'Password'. At the bottom of the dialog, there are two buttons: a blue 'SIGN IN' button and a grey 'CANCEL' button.

- b. *BLM users will select sign in with Enterprise Account, type in BLM-EGIS for the organization URL, continue, and select sign in using "DOI ACCOUNT".*

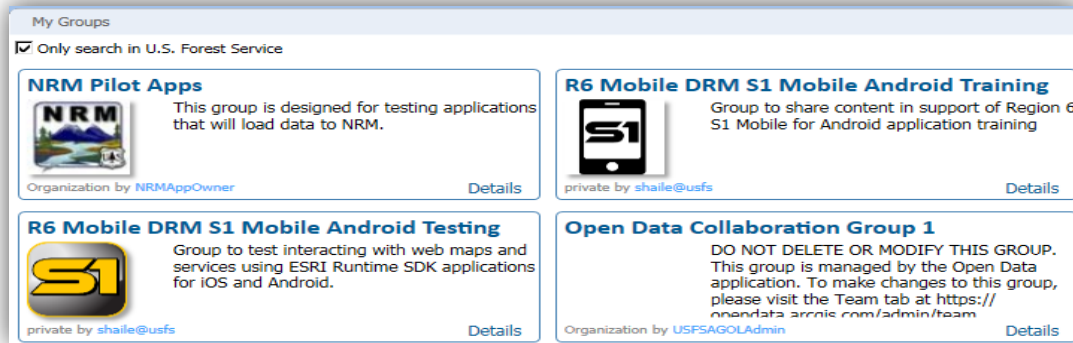


17. Once signed in, data hosted on AGOL can be added to ArcMap. To add data from AGOL, select the pulldown arrow next to the Add Data button and select **Add Data from ArcGIS Online**

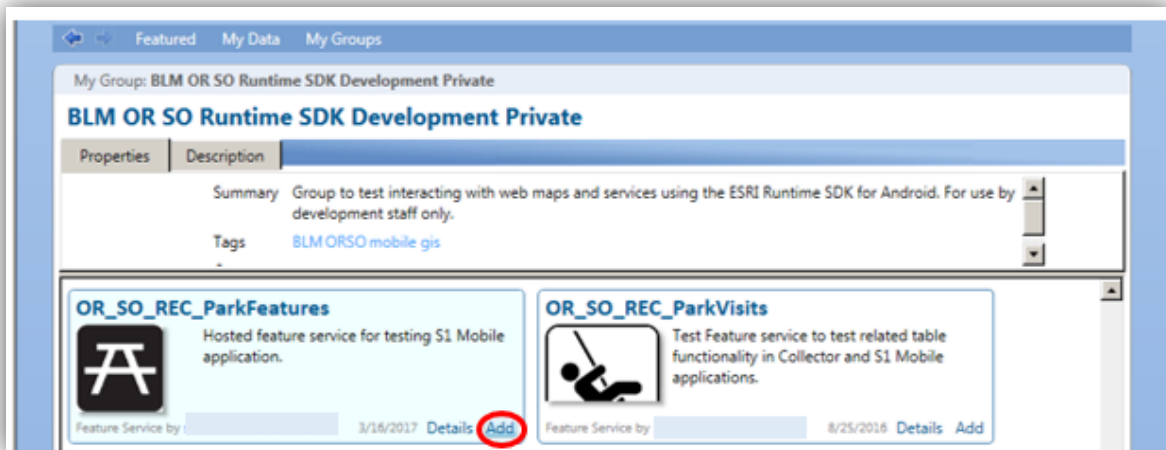



18. Navigate to the group that contains the feature service you'd like to edit. Select the

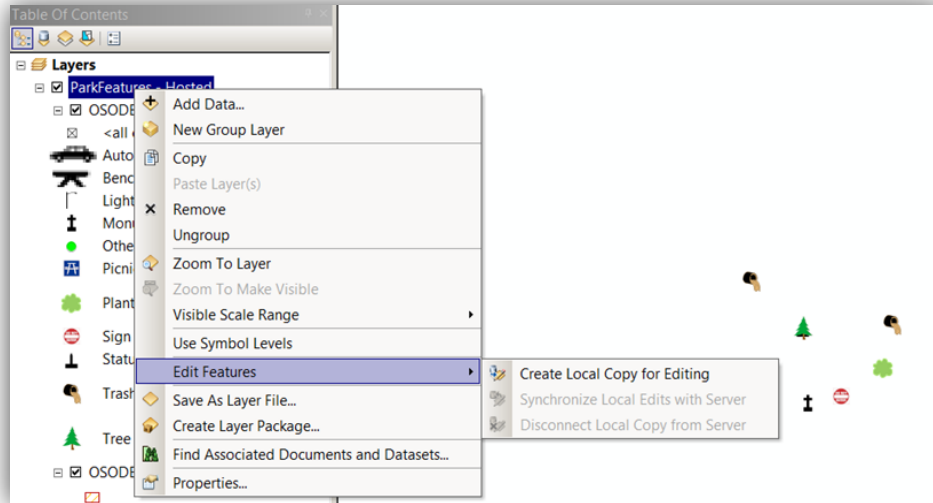
Group name or **Details** of the group that has the feature service.



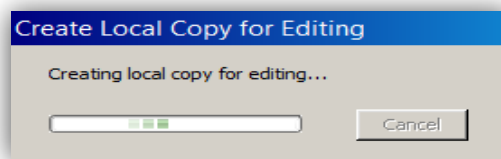
19. Tap **Add** to load the Feature Service into ArcMap Once added to the map, zoom to an extent that includes all of the data you wish to edit. Only the data in the map extent will be included in the local copy.




20. In the **Table of Contents** switch to **List by Drawing Order** , right click on the feature service name and select **Edit Features -> Create Local Copy for Editing**



A message box will open indicating that a local copy for editing is being created.




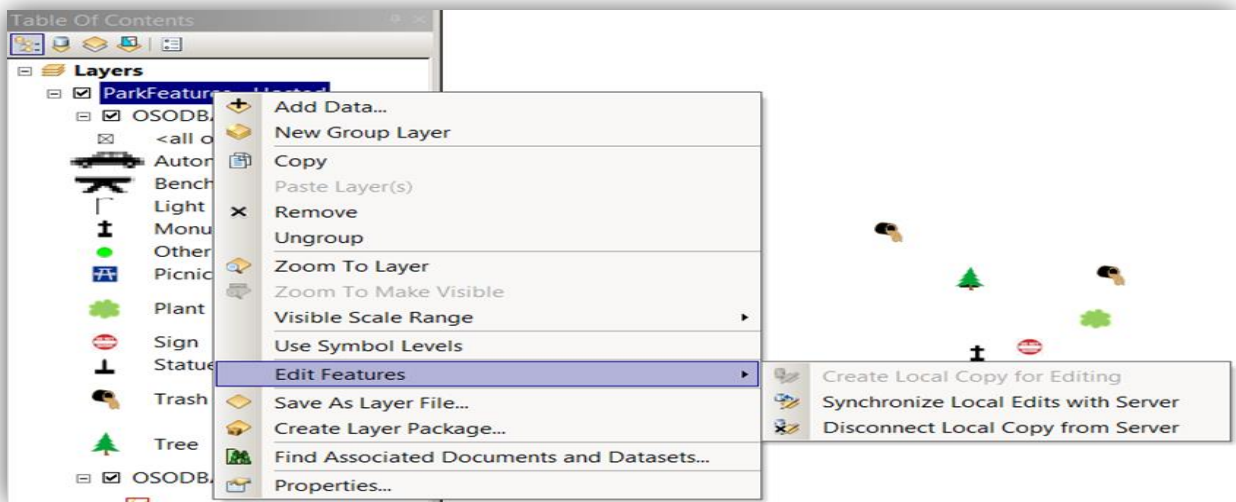
21. A local copy of the file GDB will be created. To find the source location of this data, change the view in the Table of Contents to **List by Source** .

22. On the **Editor Toolbar**, start an Edit Session. If you've not done so already, add the recovered runtime GDB that you converted to a GDB into ArcMap.

23. Copy or load the data from the recovered database into the local copy of the feature service.

24. Once satisfied with the edits made, **Save** the edits and **Stop** editing.

25. To synchronize the edits, select **List by Drawing Order**  in the Table of Contents, right click on the feature service name, select **Edit Features** -> **Synchronize Local Edits with Server**



26. Once synchronization is complete, the source of the feature service data loaded to ArcMap will change back to AGOL. ArcMap may be closed at this point and the recovered database may be discarded.