



Discovering Table Rocks

Presented by
BLM Environmental Education Program

Who helps protect the Table Rocks?

An area of Critical Environmental Concern





And YOU!





Why are the Table Rocks an area of Critical Environmental Concern?

Did you know there is a species that
lives on top of Table Rocks, that lives
NOWHERE else in the WORLD?



Meet the Dwarf Woolly Meadowfoam

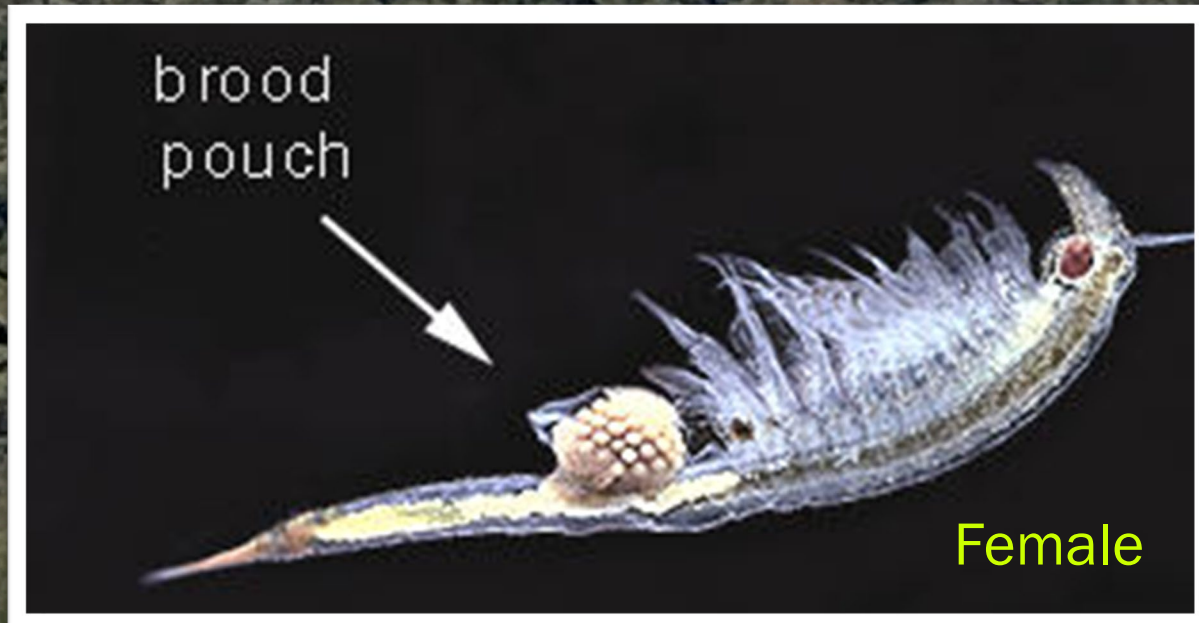
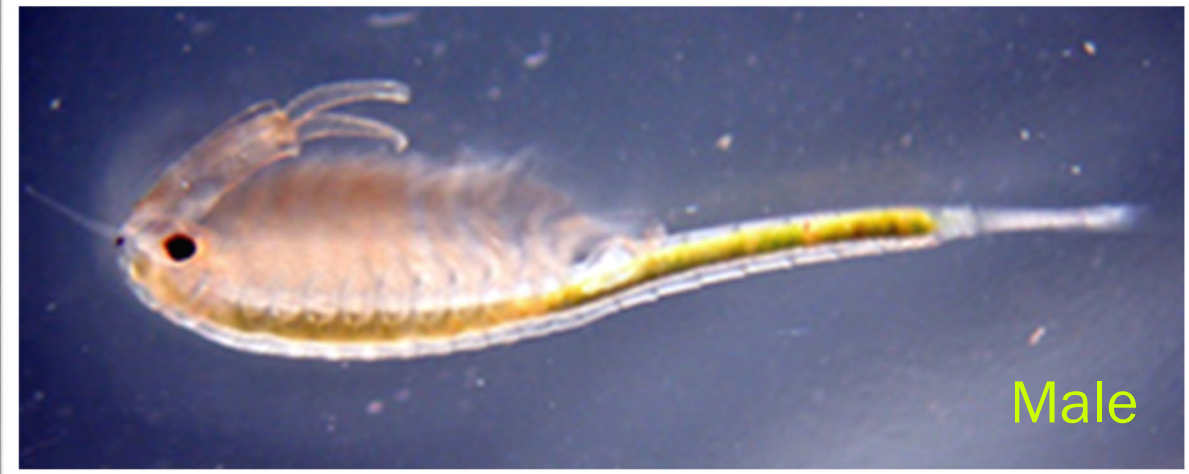
Endemic to Table Rocks, meaning it grows nowhere else in the WORLD!



- Fun Fact: The oils from the seeds of a related species is used as lubricant on space crafts because of its ability to withstand extreme heat.

Another species of concern: Vernal Pool Fairy Shrimp

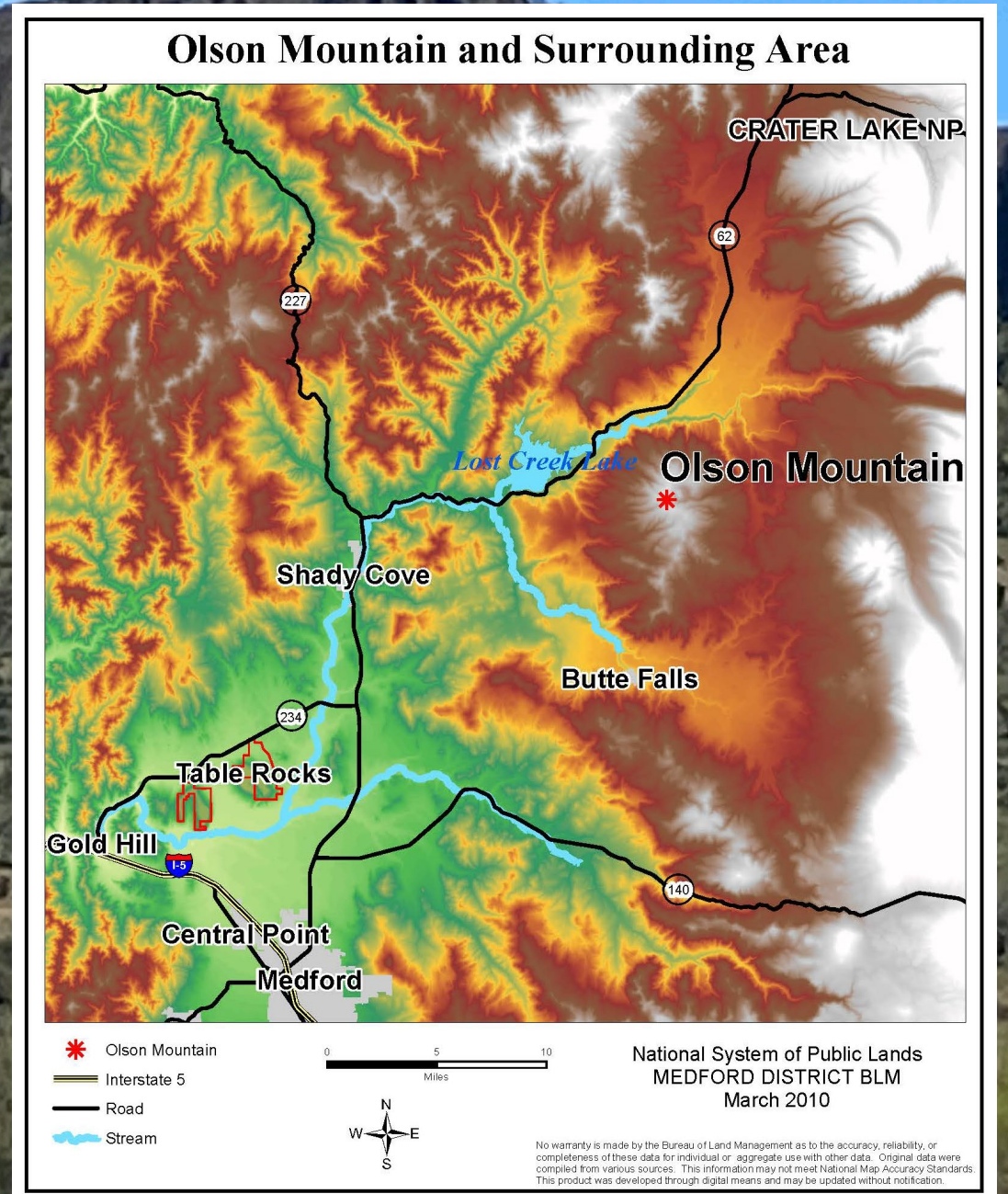
Due to the loss of habitat, the
Fairy Shrimp found on Table
Rocks are a *Threatened Species*





How did Table Rocks form?

7 million years ago, a shield volcano called Mt. Olson erupted and filled the Rogue Valley with lava.





As the lava cooled, it
hardened on top of
the soft valley floor

There were once, MANY Table Rocks

Over time, the Rogue River washed most of them away. This process is called Erosion.

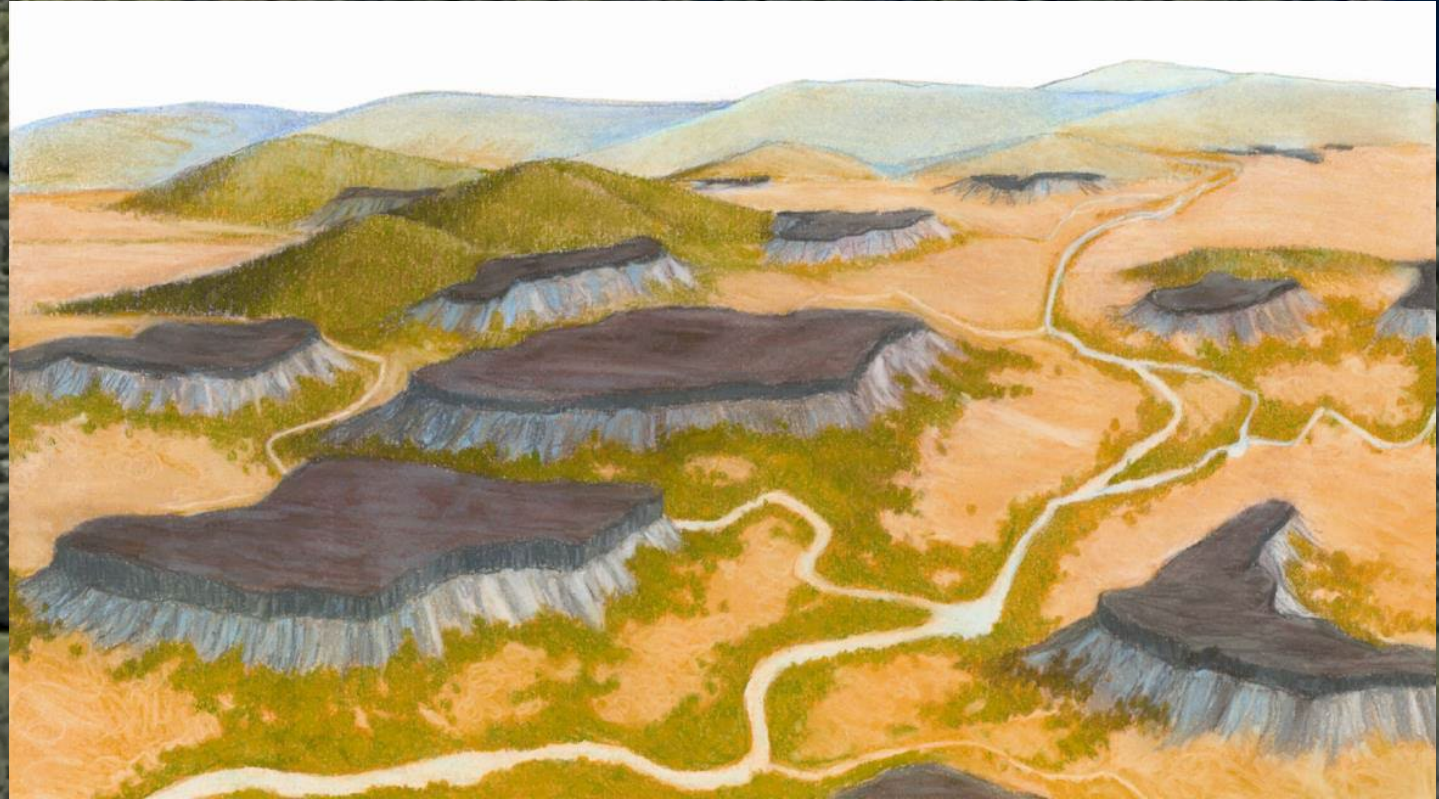


Table Rocks as we know it

Can you guess how Upper and
Lower Table Rock got their names?

Today, all that is left of
the lava flows are the
two Table Rocks.

Thousands of years
from now, even they
may disappear...

Cultural Significance of Table Rocks

Table Rocks are a very special place to many. There have been visitors of Table Rock since time immemorial including the Takelma, Shasta, and Umpqua tribes.



Agnes Baker-Pilgrim Takelma Elder
(1924 - 2019)



SPRING

SUMMER

Seasonal Rounds

FALL

WINTER



Plants and their uses

Yarrow



Medicine

Lichen



Tools

Digging Tool



Birch-leaved
Mahogany



Food

Common
Camas



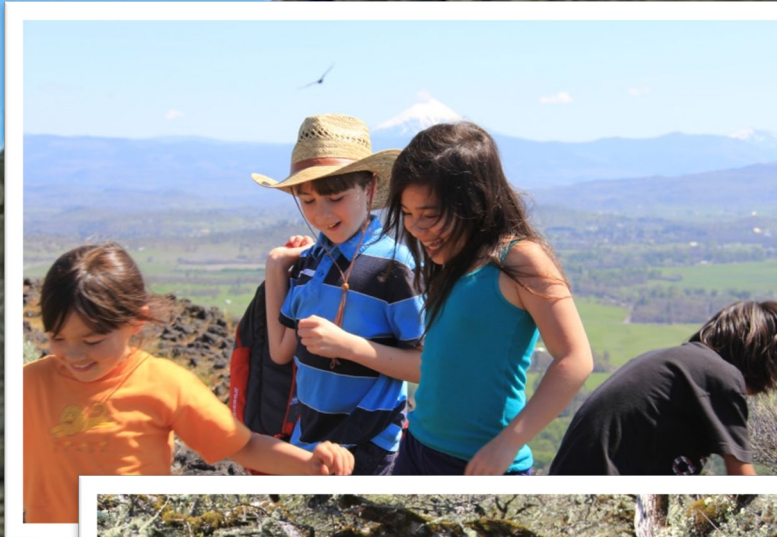
Acorns



Atlatl



What to expect on your hike



Different Plant Communities

As you hike up the trail, see if you notice the difference between these plant communities

Mixed Woodland



Mounded Prairie



Chaparral



Oak Savanna



Oak Savanna





Chaparral



Mixed Woodland



Mounded Prairie & Vernal Pools





Ticks



Poison Oak



Rattle Snakes

“Know before you go”

How can YOU help protect the Table Rocks?

- # 1 – Plan ahead & prepare
- # 2 – Travel on durable surfaces
- # 3 – Dispose of waste properly
- # 4 – Leave what you find. Take only pictures
- # 5 – Be responsible with fire
- # 6 – Respect wildlife
- # 7 – Be kind to other visitors





What to bring on your hike

Bottled water

Healthy lunch and snack

Wear comfortable tennis-shoes

Extra layers of clothing

Sun protection – Hat & Sunblock

Backpack



See you on the rock!

Questions?

Thank You!

BLM Environmental Education Program

