

Legend

County Road



Wilderness Characteristics

Yes

Roadless Area

Administered Land

Bureau of Land Management

U.S. Forest Service

Private/Unknown

0 0.2 0.4 Miles

No warranty is made by the Bureau of Land Management as to the accuracy, reliability, or completeness of these data for individual or aggregate use with other data. Original data were compiled from various sources and may be updated without notification.

Wilderness Character

Evaluation:

Back Creek

OR-054-036



U.S. DEPARTMENT OF THE INTERIOR
Bureau of Land Management
PRINEVILLE DISTRICT
3050 NE Third Street
Prineville, OR 97754
(541) 416-6700

November 2008

23

21

22

Back Creek
122 acres

Rock Creek
Roadless Area

Cottonwood Creek
Roadless Area

Ochoco National Forest

R 25 E

119°30'00"

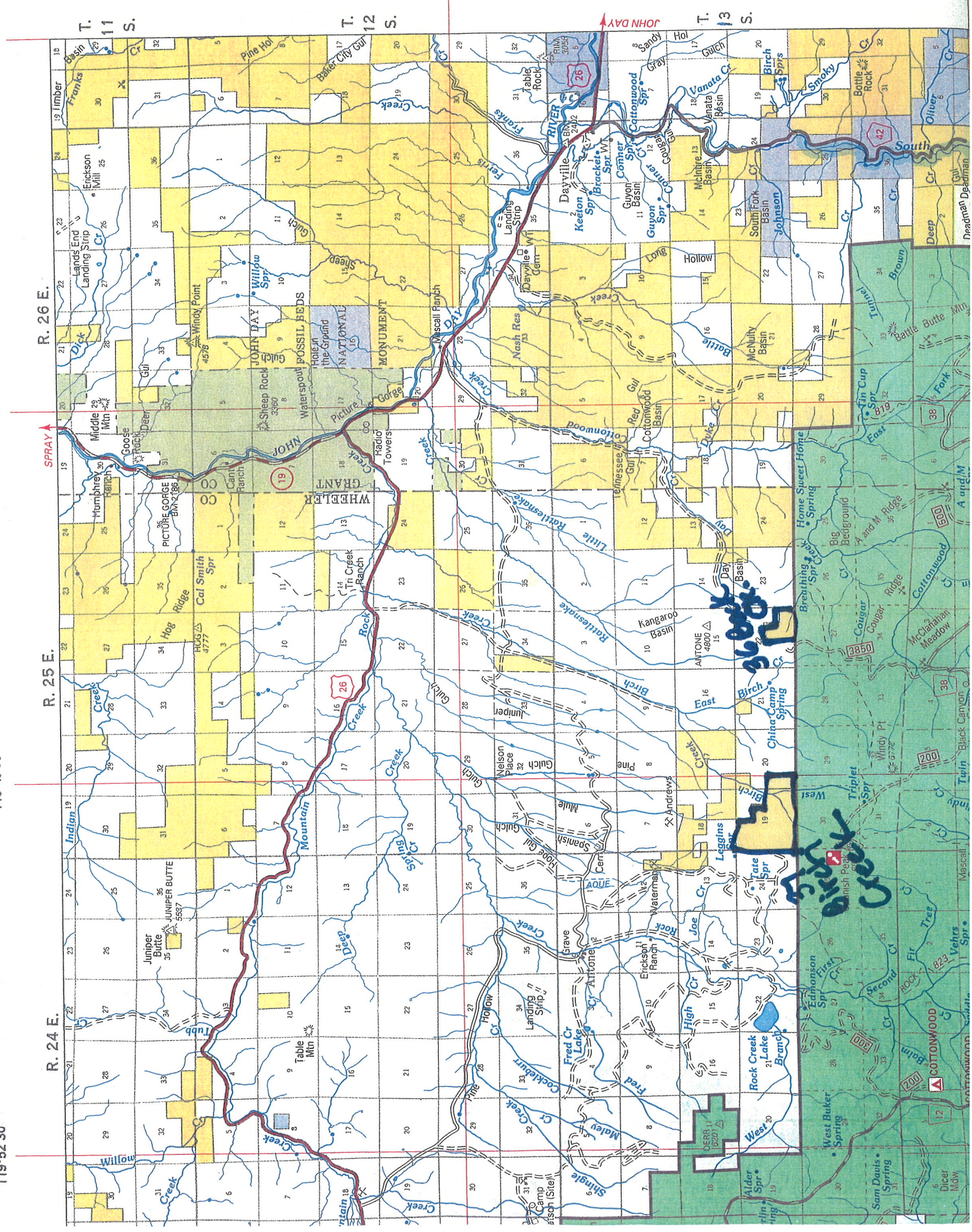
119°37'30"

119°45'00"

119°52'30"

44°
30'
00"

44°
22'



2008 John Day Basin Wilderness Character Evaluation Form

Wilderness Character Evaluation For: OR-054-036/ Back Creek Inventory Unit

1. Previous BLM wilderness inventory?

No _____ Yes X Partial _____

a) Inventory Source: Bureau of Land Management, OR/WA Wilderness Review Initial Inventory Final Decision, August 1979.

b) Inventory Unit Name(s)/Number(s): Rock Creek / OR-5-12

c) Map Name(s)/Number(s): Final Decision- Initial Wilderness Inventory Map, August 1979
(Note: This map denotes the Canyons unit as OR-5-13, but the written report denotes it as OR-5-12.)

d) BLM District(s)/Field Office(s): Prineville District Office

Unit#/Name	Size (historic acres)	Natural Condition? Y/N	Outstanding Solitude? Y/N	Outstanding Primitive & Unconfined Recreation? Y/N	Supplemental Values? Y/N
OR-5-12 Canyons	840	N/A	N/A	N/A	N/A

This inventory unit was originally inventoried despite its small size, because it was adjacent to a USFS RARE II Area (#6220). OR-5-12 also included a separate parcel in Day Basin and the two parcels totaled 840 acres. However, the RARE II Area was not recommended for wilderness designation, and BLM found that the inventory unit lacked sufficient size to be considered as wilderness on its own. The unit was not carried forward to the intensive inventory stage.

2. New Wilderness Characteristic Review

Private Recommendation: Yes X -Partial _____ No _____ by? Oregon Natural Desert Association
Date December 15, 2006

OR-054-036/ Back Creek Inventory Unit

Results of BLM Analysis: (separate by subunit if appropriate)

Unit#/Name	Size (acres)	Natural Condition? Y/N/NA	Outstanding Solitude? Y/N/NA	Outstanding Primitive & Unconfined Recreation? Y/N/NA	Supplemental Values? Y/N/NA
OR-054-036 Back Creek	122	Y	Y	Y	Unknown

Conclusion

Check One:

☐ Area reviewed lacks sufficient size and does not meet one of the exceptions for small size.

☒ The area-or a portion of the area-has wilderness character.

☐ The area does not have wilderness character.

The 2008 inventory found that the area remains in a natural condition, and when considered in conjunction with the adjacent USFS Roadless Area, the unit would provide outstanding opportunities for solitude and primitive, unconfined recreation.

(1) Describe current conditions: (Include boundary features, land ownership, size, location, topography, vegetation features and summary of major human uses/activities).

The inventory unit is located in Wheeler County, Oregon, approximately 12 miles southwest of the town of Dayville. The unit is bordered on the south by USFS Ochoco National Forest Roadless area. The east, west and north are bordered by private lands. This unit is 122 acres in size.

Original 1979 Inventory

The original 1979 inventory found that:

“Although this area is generally affected primarily by the forces of nature, the size of this inventory unit would seriously restrict any attempts to experience outstanding opportunities for solitude or outstanding primitive and unconfined types of recreation within its boundaries.”

“This inventory unit is situated along the U.S. Forest Service boundary which was being considered for wilderness potential (#6220), but was not recommended for wilderness designation”

2007 Inventory

In 2007, the unit borders a USFS Roadless Area, and when combined with these contiguous Federal lands with identified wilderness characteristics, it meets the 5,000 acre size criteria.

OR-054-036/ Back Creek Inventory Unit

Location of Unit: Portions of or all public lands in T. 13 S., R. 25 E., section 22.

Description: The Back Creek Inventory Unit topography consists of draws draining from the north slopes of the Ochoco Mountains. This small unit includes one steep conical-shaped hill (5,300 feet) and the east flank of a second hill (5,500 feet). Between these hills is a draw that forms the headwaters of Back Creek, a stream that flows east for less than ½ mile, before it leaves the unit to eventually join Cottonwood Creek.

The vegetation consists of grass on the hilltops and mixed conifer forest on the north facing slopes and in Back Creek drainage. Wildlife populations include mule deer, elk, mountain lion, bobcat, golden eagle, prairie falcon, California quail, meadowlarks and mountain bluebird.

No cultural inventories have been conducted within the inventory unit.

There are no known man-made improvements within the unit. The surrounding private lands were heavily logged in the past (mentioned in the 1979 Wilderness Inventory Report) and again in 2008. There is a possibility that some timber harvest activities from adjacent property may have crossed onto BLM land, thus reducing the naturalness of the unit, however such activity has not been confirmed.

The unit is authorized for commercial grazing under BLM permit (Allotments # 2660). Public access is available by foot or horseback from the adjacent Ochoco National Forest Roadless Area. The nearest public road access is available from Ochoco National Forest Road 3850, an unimproved or four-wheel wheel drive road which passes within a 1/4 mile of the unit. Recreation uses of the unit include big game hunting, hiking and horseback riding.

The Visual Resource Management Class of the unit is Class II.

(2) Is the unit in a natural condition?

Yes X No NA

Describe:

The unit appears to be affected primarily by nature. There are no known made-made improvements.

(3) Does the unit have outstanding opportunities for solitude?

Yes X No NA

Description:

When considered in conjunction with the adjacent USFS Roadless Area, the forest vegetation and varied topography of the unit would provide outstanding opportunities for solitude.

(4) Does the unit have outstanding opportunities for primitive and unconfined recreation?

Yes X No NA

Description:

OR-054-036/ Back Creek Inventory Unit

When considered in conjunction with the adjacent USFS Roadless Area, the unit would provide outstanding opportunities for primitive and unconfined recreation such as hunting, hiking, backpacking and backcountry exploration.

(5) Does the unit have supplemental values?

Yes _____ No ☒ NA _____

Description

The extent of supplemental values is unknown.

OR-054-036/ Back Creek Inventory Unit

Prepared by:

Team Members: (Names, Titles, Date)

Initial Review Aug. 14, 2007 by: Heidi Mottl (Recreation/Wilderness), Teal Purrington (NEPA/Planning), Dorothy Thomas (GIS), Anna Smith (Hydrology), Mike Tietmeyer (Range), Dan Tippy (Assistant Field Manager), Rick Demmer (Riparian), Monte Kuk (Wildlife), Robert Vidourek (Forestry), Mike Williams (Planning), Berry Phelps (Recreation), Craig Obermiller (Range), John Morris (Fish), Dana Cork (Transportation), Christina M. Welch (Field Manager), Don Tschida (Fire), Gavin Hoban (GIS), John Zancanella (Cultural), JoAnne Armson (Plants).

Realty/Mineral Records researched by Timothy Finger, BLM Wilderness Specialist on detail from Richland, UT, October, 2008.

Approved by:

Christina M. Welch
Field Manager

Oct. 31, 2007
Date

This form documents information that constitutes an inventory finding on wilderness characteristics. It does not represent a formal land use allocation or a final agency decision subject to administrative remedies under either 43 CFR parts 4 or 1610.5-2.

OR-054-036/ Back Creek Inventory Unit

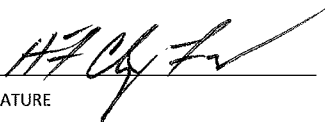
PURPOSE:

This addendum provides signatory authority across gaps in supervisory oversight in the preparation process.

DISCUSSION:

Further study has been conducted to validate the findings approved by the original signator, Christina Welch. As the new Field Manger for the Resource Area and Ms. Welch's replacement I have been briefed by the specialists assigned on the contents and underlying rationale for the findings contained in this document. I approve these findings with my signature below.

APPROVED BY:


SIGNATURE

Thursday, July 08, 2010

REFERENCES

1. Realty program

- a. Master Title Plats
T 14 S., R 30 E.
- b. Land exchange proposal Case File: OR 51858, 6/22/2000
- c. BLM LR 2000 data base.

2. Mineral Program

Oil and Gas Lease review - *No Active Leases*
BLM LR 2000 Record

3. GIS Program

USGS National Map project
BLM GIS data
BLM Upper John Day River public lands map, June 1991
Google Earth Commercial Mapping System

The BLM has identified the following man-made features:

The lands are leased for potential oil and gas development
The lands are included in an exchange proposal: OR 51858, 6/22/2000.

Team Comments – 8/14/07:

Vidourek-The area has been heavily logged and heavily roaded.

RUN TIME: 10:30 AM

DEPARTMENT OF THE INTERIOR
BUREAU OF LAND MANAGEMENT

RUN DATE: 06/07/2010

Input Parameters for MC Geographic Report

System Id = MC

Admin State = OR

Geo State =

Mer Twp Rng =

Section =

Mtrs = 33 0130S 0250E 022

Adm Agency Begins With

Aliquot Part contains

Case Disp Txt = ACTIVE, CLOSED, PENDING, VOID

Total Rows Returned: 0



No Mining Claims

NO WARRANTY IS MADE BY BLM
FOR USE OF THE DATA FOR
PURPOSES NOT INTENDED BY BLM

R 25 E.

T 13 S.

Pvt.

Pvt.

BLM
Unit

USFS Roadless Area

Forest Road 3850

PB39

PB38

OK-054-036

Original #
92-9

Back Creek