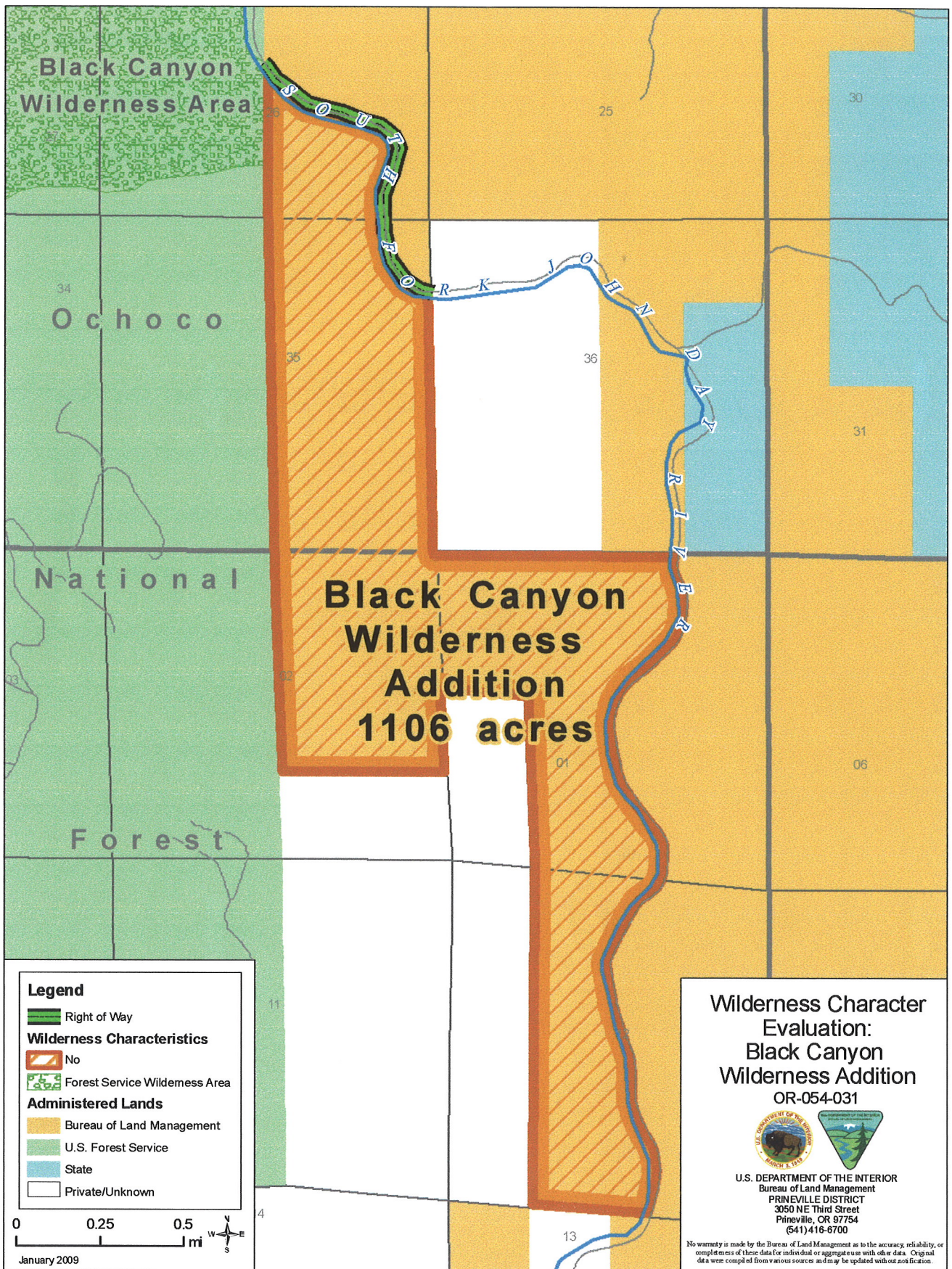


T
14
S

T
15
S



R 26 E

R 27 E

OR-054-031/ Black Canyon Wilderness Addition Inventory Unit

2008 John Day Basin Wilderness Character Evaluation Form

Wilderness Character Evaluation For: OR-054-031/ Black Canyon Wilderness Addition Inventory Unit

1. Previous BLM wilderness inventory?

No X Yes Partial

a) Inventory Source: N/A

b) Inventory Unit Name(s)/Number(s): N/A

c) Map Name(s)/Number(s) N/A

d) BLM District(s)/Field Office(s): N/A

Unit#/Name	Size (historic acres)	Natural Condition? Y/N	Outstanding Solitude? Y/N	Outstanding Primitive & Unconfined Recreation? Y/N	Supplemental Values? Y/N
N/A	N/A	N/A	N/A	N/A	N/A

2. New Wilderness Characteristic Review

Private Recommendation: Yes No X by? Date

Results of BLM Analysis: (separate by subunit if appropriate)

Unit#/Name	Size (acres)	Natural Condition? Y/N/NA	Outstanding Solitude? Y/N/NA	Outstanding Primitive & Unconfined Recreation? Y/N/NA	Supplemental Values? Y/N/NA
OR-054-031 Black Canyon Wilderness Addition	1,106	Yes	No	No	Yes

OR-054-031/ Black Canyon Wilderness Addition Inventory Unit

Conclusion

Check One:

☐ Area reviewed lacks sufficient size and does not meet one of the exceptions for small size.

☐ The area-or a portion of the area-has wilderness character.

☒ The area does not have wilderness character.

(1) Describe current conditions: (Include boundary features, land ownership, size, location, topography, vegetation features and summary of major human uses/activities).

The inventory unit is located in Grant County, Oregon, south of U.S. Highway 26, approximately 10 miles south of the town of Dayville. This unit is bordered on the west side by a combination of USFS Black Canyon Wilderness Area (1/4 mile interface), general management USFS lands, and private lands. The east side is bordered by BLM-maintained gravel road (#6207 South Fork John Day Road) and private land. The south side is bordered by private land and the north side by a combination of private land and the BLM-maintained gravel road (#6207 South Fork John Day Road). The road is a designated Backcountry Byway. The unit includes approximately 2 miles of the South Fork John Day River, which is designated as a Wild and Scenic River by Act of Congress. The unit includes portions of the public lands in T. 14 S., R 26 E., Sections 26 and 35, and T. 15 S., R 26 E., Sections 1, 2, and 12. The unit is 1,106 acres in size.

The lands are located along the west side of a steep canyon which is cut by the South Fork of the John Day River, with the road along its east bank. There are no motorized vehicle crossing points along this segment of the river. There are no vehicle routes which have been identified leading from the USFS or private lands toward the river.

The lands are grazed commercially under permit from the BLM as Allotment # 4103. The range improvements are minor and substantially unnoticeable.

(2) Is the unit in a natural condition?

Yes ☒ No ☐ NA ☐

Describe:

A portion of the boundary is formed by Road ROW OR 4156 (75feet wide) which is not included within the unit. This road separates the unit from the Wylie Gulch Unit to the east of it.

No unnatural features were noted. The unit appears to be in a natural condition.

(3) Does the unit have outstanding opportunities for solitude?

Yes ☐ No ☒ NA ☐

Description:

OR-054-031/ Black Canyon Wilderness Addition Inventory Unit

The unit has a very irregular shape, being narrow and no wider than approximately ½ mile from either private lands or from a road. The unit also has steep topography with limited vegetation cover that greatly reduces any expectation of solitude.

(4) Does the unit have outstanding opportunities for primitive and unconfined recreation?

Yes _____ No X NA _____

Description:

The lands are currently being used for recreation purposes along the river corridor, but not for primitive and unconfined recreation activities. The Forest Service lands directly adjacent to the unit offer a motorized, not necessarily primitive recreation experience. Only a small portion of the unit (about ¼ mile of interface) is next to the designated Black Canyon Wilderness Area, which offers outstanding recreational opportunities within its boundaries.

(5) Does the unit have supplemental values?

Yes X No _____ NA _____

Description:

The river corridor provides significant scenic and recreational values as recognized by several designations including Wild and Scenic River, State Scenic Waterway, and Backcountry Byway.

OR-054-031/ Black Canyon Wilderness Addition Inventory Unit

Prepared by:

Team Members: (Names, Titles, Date)

Initial Review Aug. 14, 2007 by: Heidi Mottl (Recreation/Wilderness), Teal Purrington (NEPA/Planning), Dorothy Thomas (GIS), Anna Smith (Hydrology), Mike Tietmeyer (Range), Dan Tippy (Assistant Field Manager), Rick Demmer (Riparian), Monte Kuk (Wildlife), Robert Vidourek (Forestry), Mike Williams (Planning), Berry Phelps (Recreation), Craig Obermiller (Range), John Morris (Fish), Dana Cork (Transportation), Christina M. Welch (Field Manager), Don Tschida (Fire), Gavin Hoban (GIS), John Zancanella (Cultural), JoAnne Armson (Plants).

Realty/Mineral Records researched by Timothy Finger, BLM Wilderness Specialist on detail from Richland, UT, October, 2008.

Approved by:

Christina M. Welch
Field Manager

Oct. 31, 2007
Date

This form documents information that constitutes an inventory finding on wilderness characteristics. It does not represent a formal land use allocation or a final agency decision subject to administrative remedies under either 43 CFR parts 4 or 1610.5-2.

OR-054-031/ Black Canyon Wilderness Addition Inventory Unit

PURPOSE:

This addendum provides signatory authority across gaps in supervisory oversight in the preparation process.

DISCUSSION:

Further study has been conducted to validate the findings approved by the original signator, Christina Welch. As the new Field Manger for the Resource Area and Ms. Welch's replacement I have been briefed by the specialists assigned on the contents and underlying rationale for the findings contained in this document. I approve these findings with my signature below.

APPROVED BY:


SIGNATURE

Thursday, July 08, 2010

OR-054-031/ Black Canyon Wilderness Addition Inventory Unit

REFERENCES

Realty Program–

- a. MTPs for T. 14 S., R. 26 E., T. 15 S., R. 26 E.
- b. Case File for ROW OR 4156

Mineral Program –

- a. Oil and Gas Lease review
- b. BLM LR 2000 Record

GIS Program –

- a. USGS National Map project
- b. BLM GIS data
- c. BLM Lower John Day River public lands map, June 1991
- d. Google Earth Commercial Mapping System, 2009

Team Comments from initial review -8/14/07:

Welch- A new fence was just built.

Morris- There have been fire suppression activities in the past.

Welch- The parcel is small, but it is adjacent to general purpose forest land with a small bridge to wilderness.

STATUS OF PUBLIC DOMAIN LAND AND MINERAL TITLES

135 27E

[illegible]

FOR ORDERS AFFECTING DISPOSAL OR USE OF
UNIDENTIFIED LADS WITHDRAWN FOR CLASSIFICATION
MINERAL WATER AND/OR OTHER PUBLIC PURPOSES,
REFER TO INDEX OF MISCELLANEOUS DOCUMENTS

S.O. 1165/1931, Part 5, Sec. 64. Open In Entry Sub/
17, Sec 24 FPA
Sec 23, 24, 25
Sec 26, 27
Sec 35, 36
Sec 35, 36

OR 012/29 Dat 16, 17, 18/1 of Cong. 7/23/1955
completed 4/5/1963, all NP surface Mgmt by USFS

BLM WSA 112 10/2/1982. Sgr. from Min. Lie & Per
12, 13

FILE REF	W16028503H	AIRMAILP2000/EXT Ref#RCAD 60
CONVERT #FE6	04/M/2000	BY R OBIGNS
LAST UPDATE	05/7M/2000	" BT H RECHS
POSTED TO PUBLIC RECORDS	10/25/2003	
SURVETED TOWNSHIP		
SURVEYED COORDINATE SOURCE		N/A
GDS HAD 83 CURRENT TO		MANKIND ORIGINAL MTP
PROJECTION		N/A
COORDINATE ELEVATION		N/A
SOURCE FOR METES & BOUNDS		N/A
NOTES		



WARNING STATEMENT

This plot is the Bureau's Record of Title, and should be used primarily as a graphical display of the township survey data. Records are not indexed by title number, which may have been identified by lateral movement of files at other desks at the register. Refer to the national surveys for official survey descriptions.

T 14 S
R 26 E

PRINEVILLE DISTRICT
GRANT COUNTY

STATUS OF PUBLIC DOMAIN
LAND AND MINERAL TITLES[illegible][illegible]

FOR ARCHIVE AFTER FIVE YEARS, OR USE OF
ANY INFORMATION CONTAINED HEREIN FOR
UNLAWFUL PURPOSES, INCLUDING BUT NOT LIMITED TO,
REPRODUCTION, DISTRIBUTION, OR OTHER PUBLIC DISSEMINATION,
IS PROHIBITED. ANY VIOLATION OF THESE TERMS
MAY BE SUBJECT TO LEGAL ACTION.

REF ID: A66555

OP 47219 Part 10, 167 (Part of Case 07-237095)
Completed 04/05/1963, 101 MF seven night by PS

OP 12145 Exmt to US
See 13, EWING, SIMON, NAKASH, SIEGMA
See 24, MAYER, NEWMAN
See 36, EISEN

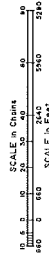
OP 44748 Will BLM S Fork John Day Wild & Scenic
River 10/28/1988
See 1, 12, 14, 24, 25, 36 M88

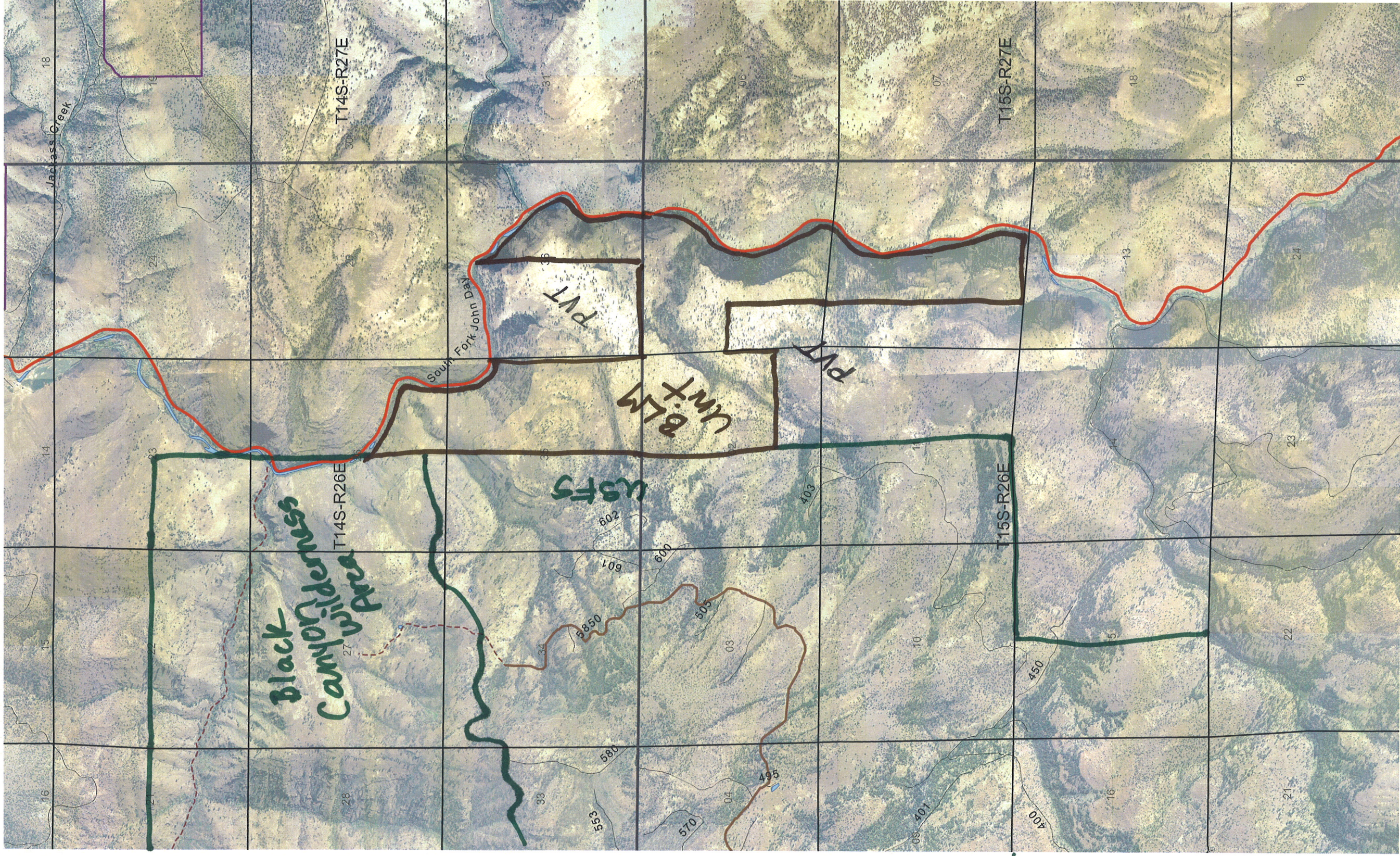
FILE REF: 1016160401H	ACAD Map2000/OTX Refstr C10.0
CONVERT APED: 01/29/2000	BY: A. BOSCH
LAST UPDATE: 01/29/2000	BY: S. LEVENWORTH
POSTED TO PUBLIC RECORDS: 03/12/2000	
SURVEYED TOWNSHIP	
SURVEYED COORDINATE SOURCE:	
CURRENT TO:	
MADE SOURCE	SCANNED ORIGINAL MTP
PROJECTION	N/A
COORDINATE ELEVATION	N/A
SOURCE FOR METES & BOUNDS	N/A
NOTES:	
USE PLAT. LHM:MM	

T. 15 S.
R. 26 E.

WARNING STATEMENT

This plot is the Bureau's Record at Tulsa, and should be used only as a graphic display of the township survey data. Records herein do not reflect title changes which may have been effected by lateral movements at Tulsa or other Indian water. Refer to the accurate surveys for official survey data.





031- Black Canyon Wilderness Addition

031 - Black Cyn.