

Map 1

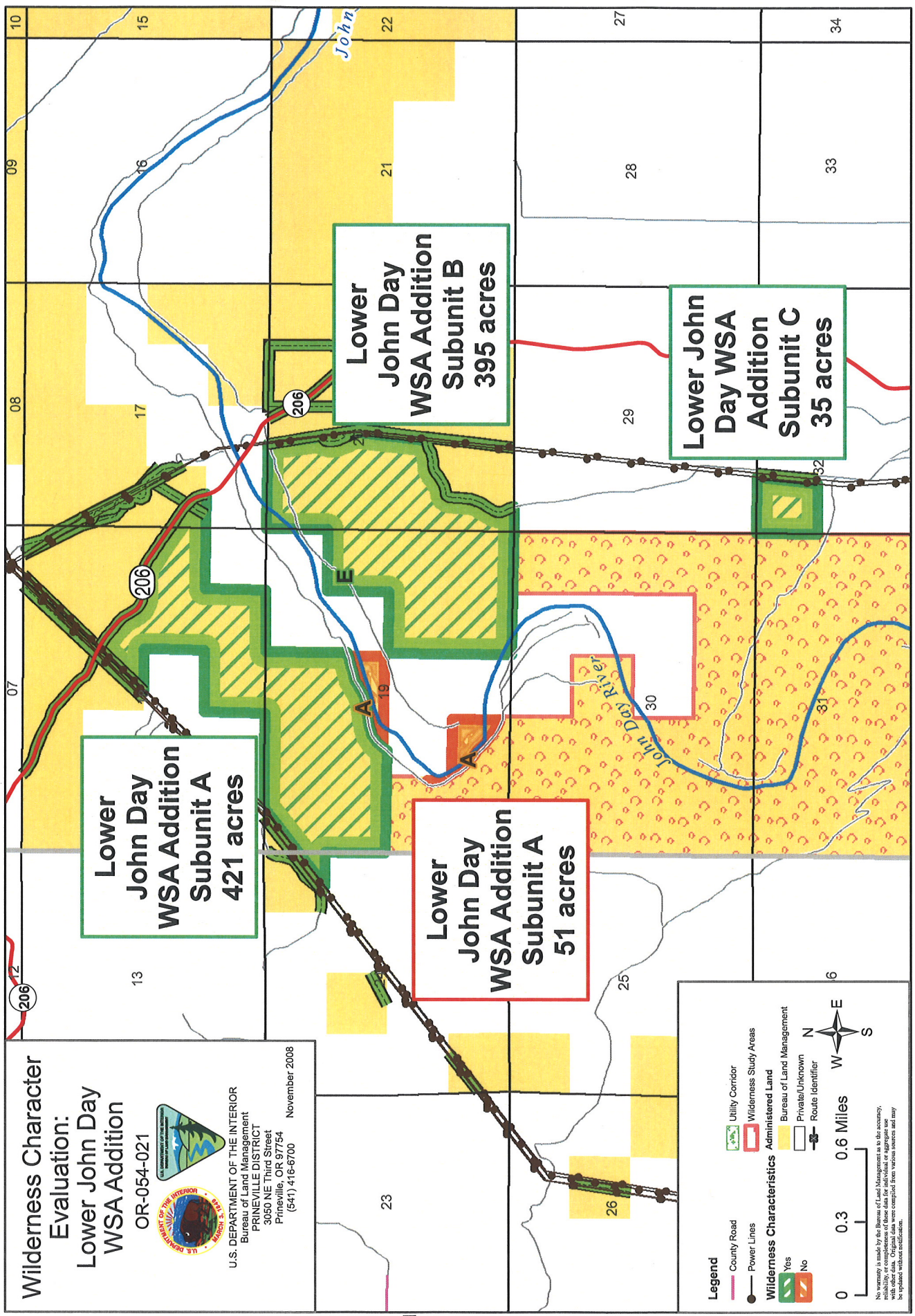
**Wilderness Character
Evaluation:
Lower John Day
WSA Addition**

OR-054-021



U.S. DEPARTMENT OF THE INTERIOR
Bureau of Land Management
PRINEVILLE DISTRICT
3050 NE Third Street
Prineville, OR 97754
(541) 416-8700

November 2008



Legend

- County Road
- Power Lines
- Utility Corridor
- Wilderness Study Areas
- Administered Land
- Wilderness Characteristics
- Bureau of Land Management
- Private/Unknown
- Route Identifier

0 0.3 0.6 Miles

0 0.3 0.6 Miles

No warranty is made by the Bureau of Land Management as to the accuracy, reliability, or completeness of these data for individual or aggregate use with other data. Original data were compiled from various sources and may be updated without notification.

R 18 E

R 19 E

Wilderness Character Evaluation:
Lower John Day WSA Addition

OR-054-021



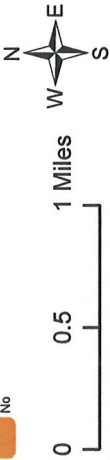
U.S. DEPARTMENT OF THE INTERIOR
 Bureau of Land Management
 PRINEVILLE DISTRICT
 3050 NE Third Street
 Prineville, OR 97754
 (541) 416-6700 November 2008

Lower John Day WSA Addition Subunit F
238 acres

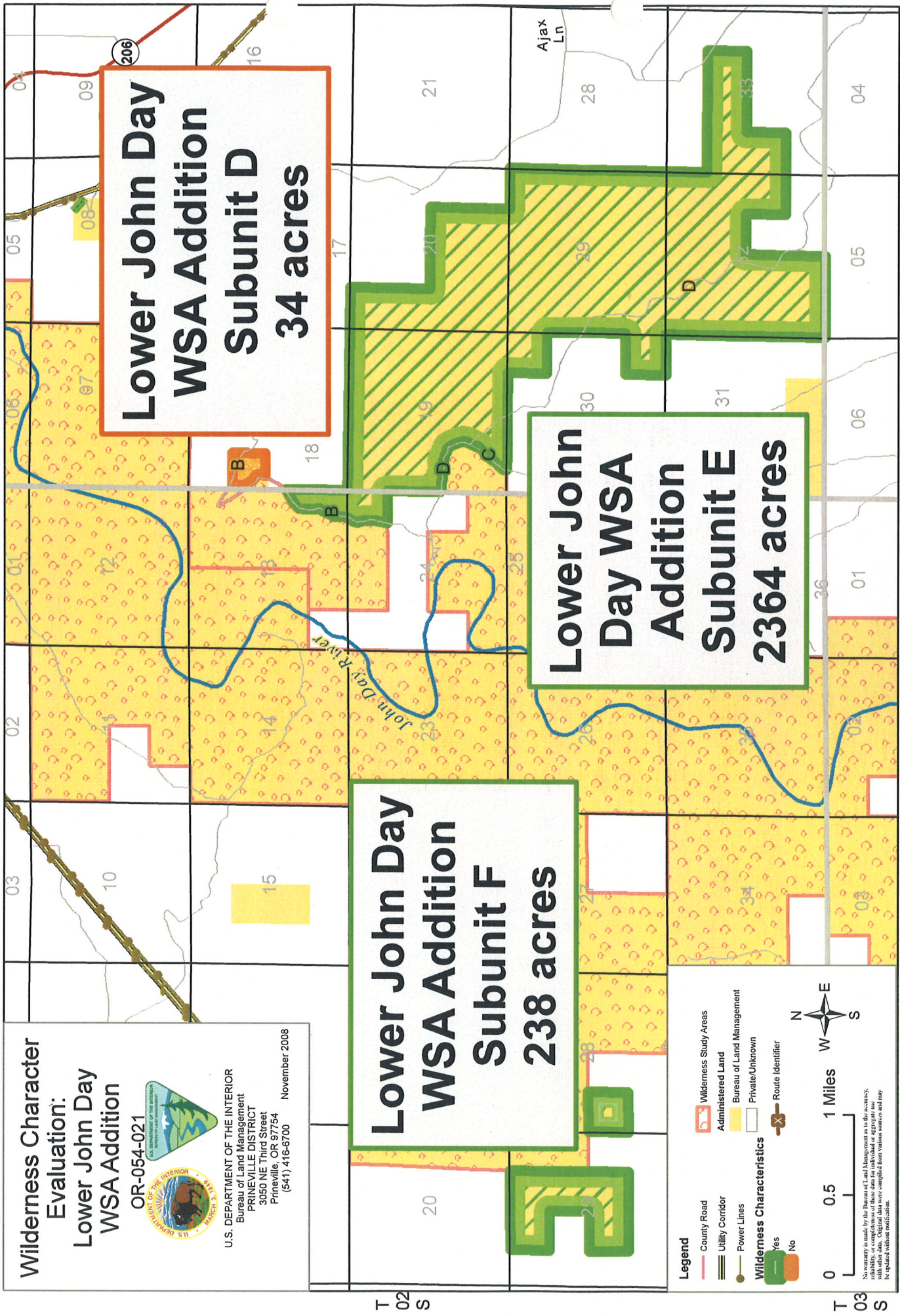
Lower John Day WSA Addition Subunit E
2364 acres

Lower John Day WSA Addition Subunit D
34 acres

- Legend**
- County Road
 - Utility Corridor
 - Power Lines
 - Wilderness Study Areas
 - Administered Land
 - Bureau of Land Management
 - Private/Unknown
 - Wilderness Characteristics Yes
 - Wilderness Characteristics No
 - Route Identifier



No warranty is made by the Bureau of Land Management as to the accuracy, reliability, or completeness of these data for individual or aggregate use without other data. Original data were compiled from various sources and may be updated without notification.



R 18 E

R 19 E

T 02 S

T 03 S

2008 John Day Basin Wilderness Character Evaluation Form

Wilderness Character Evaluation For: OR-054-021/ Lower John Day WSA Additions Inventory Unit

1. Previous BLM wilderness inventory?

No _____ Yes _____ Partial X

a) Inventory Source: Bureau of Land Management, OR/WA, Initial Wilderness Inventory, August 1979, and Bureau of Land Management, OR/WA Final Intensive Inventory Decisions, November 1980.

b) Inventory Unit Name(s)/Number(s): Lower John Day / OR-05-006, Gull Island / OR-05-080, Lion Island / OR-05-081

c) Map Name(s)/Number(s) 1979 Final Decision – Initial Wilderness Inventory Map

d) BLM District(s)/Field Office(s): Prineville District, Central Oregon Resource Area

Unit#/ Name	Size (historic acres)	Natural Condition? Y/N	Outstanding Solitude? Y/N	Outstanding Primitive & Unconfined Recreation? Y/N	Supplemental Values? Y/N
OR-05-6 Lower John Day	19,570	Yes	Yes	Yes	Yes

2. New Wilderness Characteristic Review

Private Recommendation: Yes X- Subunits A, B, D, E, and F No _____ by? Oregon Natural Desert Association Date: December 15, 2006

Results of BLM Analysis: (separate by subunit if appropriate)

Unit#/ Name	Size (acres)	Natural Condition? Y/N/NA	Outstanding Solitude? Y/N/NA	Outstanding Primitive & Unconfined Recreation? Y/N/NA	Supplemental Values? Y/N/NA
OR-054-021 Lower John Day	472	Yes – 421 Acres	Y Partial	Y Partial	Y Partial

OR-054-021/ Lower John Day WSA Additions Inventory Unit

WSA Addition Subunit A (Northwest)		No - 51 Acres			
OR-054-021 Lower John Day WSA Addition Subunit B (Northeast)	395	Yes	Yes	Yes	Yes
OR-054-021 Lower John Day WSA Addition Subunit C (Bull Basin)	35	Yes	Yes	Yes	Yes
OR-054-021 Lower John Day WSA Addition Subunit D (Owens Basin)	39	No	N/A	N/A	N/A
OR-054-021 Lower John Day WSA Addition Subunit E (Ferry Canyon)	2364	Yes	Yes	Yes	Yes
OR -054-021 Lower John Day WSA Addition Subunit F (Curie Canyon)	238	Yes	Yes	Yes	Yes

OR-054-021/ Lower John Day WSA Additions Inventory Unit

Conclusion

Check One:

Area reviewed lacks sufficient size and does not meet one of the exceptions for small size.

The area-or a portion of the area-has wilderness character.

The area does not have wilderness character.

(1) Describe current conditions: (Include boundary features, land ownership, size, location, topography, vegetation features and summary of major human uses/activities).

Location: The lands are located in Sherman County and Gilliam County, Oregon, 10 to 18 miles southeast of the town of Wasco. The inventory unit consists of six (6) separate subunits, all of which are located south of Oregon State Route 206, on both sides of the John Day River in close proximity to each other. Each of the subunits borders the Lower John Day WSA. Not all of the lands were previously inventoried by BLM since some were acquired after 1991. There is an Executive Order (11/24/1916) establishing portions of the unit as a potential power site reserve, however a subsequent order OR 44721 (10/28/1988) established the John Day Wild and Scenic River in these same portions of the unit.

Original Inventory

Some of the lands in address in the 2008 inventory were previously inventoried in 1979-1980 for their wilderness characteristics under Section 603 of FLPMA, and some of the lands have not been previously inventoried.

In August 1979, the initial BLM OR/WA Wilderness Inventory effort addressed the lands in 2008 Subunits D, E and F and these lands were carried forward to the intensive inventory phase. During the 1980 Intensive Wilderness Inventory for the Lower John Day Unit (OR-05-6), the lands in each of these three 2008 subunits were at one point excluded from the unit:

“2,575 acres were excluded from this unit, due to very narrow configurations of public land lacking both outstanding opportunities of solitude and primitive types of recreation.

However, Subunit E was later added back into the unit, as the discussion centered on whether the routes in the Ferry Canyon area were roads or ways:

“2,375 acres were added to Unit 5-6 when an eastern boundary road [Ferry Canyon] was determined to be a way.”

The Final Intensive Inventory Decisions in November 1980 again dropped 2008 Subunit E within the Lower John Day Inventory Unit from further study, with the following finding for the lands in the Ferry Canyon area (2008 Subunit E):

OR-054-021/ Lower John Day WSA Additions Inventory Unit

“2,575 acres were eliminated when a road [Rose Brier] was found to meet the road criteria east of Owens Basin.”

Ultimately, the Final Decision for the Intensive Inventory dropped 2008 Subunits D, E and F from further consideration as wilderness. The lands in 2008 Subunits A, B and C have not been previously inventoried.

Description of Current Conditions

Six subunits are adjacent to the Lower John Day Wilderness Study Area:

1. Lower John Day WSA additions (6 subunits: A, B, C, D, E, and F).

Subunit A -Northwest subunit

Location: Portions or all public lands located in T. 1 S., R. 18 E., Section 24; T. 1 S., R. 19 E., Sections 17, 18, 19. The subunit is bordered on the north by Oregon Highway 206 in Cottonwood Canyon and by a power line ROW, on the south by public lands managed by BLM as the Lower John Day WSA, and elsewhere by private lands. The subunit is 472 acres in size.

There is a 200 foot wide Highway ROW (OR 0933) in T. 1 S., R. 19 E., Section 18 which forms a portion of the north boundary of the unit, but which is located outside of the unit. There is a 250 foot wide BPA power line ROW (OR 02451) which also forms a portion of the north boundary, but which is located outside of the unit in T. 1 S., R. 19 E., Sections 19, 18, and T. 2 S., R. 18 E., Section 24. There is a 50 foot wide BPA ROW (OR 15910) which crosses portions of T. 1 S., R. 19 E., Section 18, but which is located outside of the unit.

The lands consist primarily of basalt canyon walls with horizontal terrace-like rims and steep, rugged vertical drainages, all towering dramatically above the John Day Wild and Scenic River.

(2) Is the unit in a natural condition?

Yes -Partial No NA

Describe:

The BLM has identified the following man-made features:

A vehicle route, which BLM has determined to be a road, crosses through the sub-unit in T. 1 S., R. 19 E., Section 19 along the base of the cliff and adjacent to the river. This road eliminates two small portions of the lands in this sub-unit (total of 51 acres) from further wilderness review since the lands are isolated. See attached Road Analysis Form for Route A. The private lands which this route accesses are being purchased by Oregon Department of Parks and Recreation for inclusion in the new Cottonwood Canyon State Park (OPRD). OPRD has not made a final decision about the future use of Route A. If OPRD decides to close the route to motorized use, the two small parcels would no longer be isolated from the rest of the sub-unit and should be re-inventoried for wilderness characteristics.

OR-054-021/ Lower John Day WSA Additions Inventory Unit

Although the lands are grazed under BLM Allotment # 2597, there are limited man-made features associated with grazing since the terrain is so steep.

The two small portions of Subunit A (total of 51 acres) that are isolated from the remainder of the unit by Route A will not be considered further in this document, as these lands are detached from the rest of the unit by a road and do not meet size requirements on their own. (See Map 1)

(3) Does the unit have outstanding opportunities for solitude?

Yes X - Partial No _____ NA _____

Description:

An outstanding opportunity for an expectation of solitude exists along the John Day River, which was recognized for the adjacent Lower John Day WSA during the initial inventory process. The feeling of being alone in an isolated and uninhabited area is the dominate impression in the massive canyons along the river. It would be easy for the visitor to avoid sights and sounds of other people in the twisting river canyon and in the narrow the side canyons. In the plateaus and the uplands above the river, the opportunities for solitude are reduced.

(4) Does the unit have outstanding opportunities for primitive and unconfined recreation?

Yes X-Partial No _____ NA _____

Description:

The subunit provides outstanding opportunities for primitive recreation, which was recognized for the adjacent Lower John Day WSA during the initial inventory process. Recreation patterns and trends have altered somewhat since the initial inventory, with an increase in boating and fishing use, mostly in recognition of the opportunities which are present.

(5) Does the unit have supplemental values?

Yes X-Partial No _____ NA _____

Description:

The BLM identified variety of geological features and wildlife habitat, which the earlier BLM inventory for the adjacent Lower John Day WSA also recognized as being present.

Subunit B - Northeast subunit

Location: Portions or all public lands located in T. 1 S., R. 19 E., Sections 19, 20. The subunit is bordered on the south by public lands managed by BLM as the Lower John Day WSA, on the east by a BPA power line and power line access road ROW (OR 010407) which is located outside of the unit in T. 1 S., R. 19 E., Section 20, and the subunit is bordered elsewhere by private lands. Subunit B is located across the John Day River from Subunit A and is separated from Subunit A by some private lands in the bottoms along the river. Subunit B is 395 acres in size.

The lands consist primarily of basalt canyon walls with horizontal terrace-like rims and steep, rugged vertical drainages, all towering dramatically above the John Day Wild and Scenic River.

OR-054-021/ Lower John Day WSA Additions Inventory Unit

(2) Is the unit in a natural condition?

Yes No NA

Describe:

The BLM has identified the following man-made features:

The BLM identified a minor vehicle route which begins at Oregon State Highway 206 and travels to the southwest, crossing the subunit in T. 1 S., R. 19 E., Sections 18 and 19. See attached Road Analysis Form for Route E in which BLM determined that the route does not qualify as a road. The route provides access to private lands which have been purchased by Oregon Department of Parks and Recreation for inclusion in the new Cottonwood Canyon State Park (OPRD).

Although the lands are grazed under BLM Allotment # 2597, there are limited man-made features associated with grazing since the terrain is so steep.

(3) Does the unit have outstanding opportunities for solitude?

Yes No NA

Description:

An outstanding opportunity for an expectation of solitude exists along the John Day River and was recognized for the adjacent Lower John Day WSA during the initial inventory process. The feeling of being alone in an isolated and uninhabited area is the dominate impression in the massive canyons along the river. It would be easy for the visitor to avoid sights and sounds of other people in the twisting river canyon and narrow side canyons. In the plateaus and the uplands above the river, the opportunities for solitude are reduced.

(4) Does the unit have outstanding opportunities for primitive and unconfined recreation?

Yes No NA

Description:

The subunit provides outstanding opportunities for primitive recreation, and was recognized for the adjacent WSA during the initial inventory process. Recreation patterns and trends have altered somewhat since the initial inventory, with an increase, mostly in recognition of the opportunities which are present.

(5) Does the unit have supplemental values?

Yes No NA

Description:

The BLM identified variety of geological features and wildlife habitat, which the earlier BLM inventory for the adjacent WSA also recognized as being present.

Subunit C – Bull Basin

OR-054-021/ Lower John Day WSA Additions Inventory Unit

Location: Portions or all public lands located in T. 1 S., R. 19 E., Section 32. The subunit is bordered on the west by public lands managed by the BLM as a portion of the Lower John Day WSA, on the east by a BPA power line ROW (OR 010407) which crosses a portion of T. 1 S., R. 19 E., Section 32, but which is located outside of the subunit, and elsewhere by private lands. The subunit is approximately 35 acres in size.

(2) Is the unit in a natural condition?

Yes No NA

Describe:

The BLM identified no man-made features. The lands are commercially grazed under permit by BLM as Allotment #2597.

(3) Does the unit have outstanding opportunities for solitude?

Yes No NA

Description:

Although there is an outstanding opportunity for an expectation of solitude which exists along the John Day River and was recognized for the adjacent WSA during the initial inventory process, in the plateaus and the uplands above the river, these opportunities are reduced. It is only when taken in association with the adjacent WSA that this level is outstanding.

(4) Does the unit have outstanding opportunities for primitive and unconfined recreation?

Yes No NA

Description:

Although there is an outstanding opportunity for primitive recreation which exists along the John Day River and was recognized for the adjacent WSA during the initial inventory process, in the plateaus and the uplands above the river, these opportunities are reduced. It is only when taken in association with the adjacent WSA that this level is outstanding for this subunit.

(5) Does the unit have supplemental values?

Yes No NA

Description:

The BLM identified variety of geological features and wildlife habitat, which the earlier BLM inventory for the adjacent WSA also recognized as being present. Although it is not known whether the 35 acres of Subunit C contain the same supplemental values as the adjacent WSA, the supplemental values are present when taken in association with the adjacent WSA.

Subunit D – Owens Basin

Location: Portions or all public lands located in T. 2 S., R. 19 E., Section 18. The subunit is bordered on the west by the Owens Basin Road (See attached Road Analysis Form for Route B) which forms the boundary of the Lower John Day WSA. The remainder of the boundary is private lands. The subunit is approximately 39 acres in size.

(2) Is the unit in a natural condition?

OR-054-021/ Lower John Day WSA Additions Inventory Unit

Yes _____ No X NA _____

Describe:

The BLM identified a road that switchbacks through the 35 acre unit in two places. See attached Road Analysis Form for Route B. The presence of Route B overwhelms the small size of the subunit and makes it appear unnatural.

(3) Does the unit have outstanding opportunities for solitude?

Yes _____ No _____ NA X

Description:

(4) Does the unit have outstanding opportunities for primitive and unconfined recreation?

Yes _____ No _____ NA X

Description:

(5) Does the unit have supplemental values?

Yes _____ No _____ NA X

Description:

Subunit E – Ferry Canyon

Location: Portions or all public lands located in T. 2 S., R. 18 E., Sections 13 and 24, and T. 2 S., R. 19 E., Sections 19, 20, 29, 30, 32, 33. The subunit is bordered to the west and northwest by a combination of public lands administered as the Lower John Day WSA and private lands, and is bordered elsewhere by private lands. The subunit is approximately 2364 acres in size.

The lands are located in the Ferry Canyon drainage, which slopes westwards towards the John Day River. This is an undulating landscape of dramatic basalt outcroppings and rims, which tower over the river valley. Ferry Canyon itself has a riparian community along its length.

(2) Is the unit in a natural condition?

Yes X No _____ NA _____

Describe:

BLM identified the remnants of a vehicle route which ran down the portion of Ferry Canyon located within the subunit at one time, but which is currently receiving no use and is rehabilitating naturally. (See attached Road Analysis Form for Route D.) The subunit is in a natural condition. The lands are commercially grazed under permit by BLM as Allotments #2619 and #2611.

(3) Does the unit have outstanding opportunities for solitude?

Yes X No _____ NA _____

Description:

OR-054-021/ Lower John Day WSA Additions Inventory Unit

The outstanding opportunity for an expectation of solitude that exists along the John Day River and was recognized for the adjacent WSA during the initial inventory process is also present in Ferry Canyon. The feeling of being alone in an isolated and uninhabited area is the dominate impression in the massive canyons along the river. It would be easy for the visitor to avoid sights and sounds of other people in the narrow and twisting canyons and along the side canyons. In the plateaus and the uplands above the river, the opportunities for solitude are reduced.

(4) Does the unit have outstanding opportunities for primitive and unconfined recreation?

Yes No NA

Description:

The subunit provides outstanding opportunities for primitive recreation, and which was also noted in the initial BLM inventory. Recreation patterns and trends have altered somewhat since the initial inventory, with an increase in hiking up Ferry Canyon from the John Day River, mostly in recognition of the opportunities which are present.

(5) Does the unit have supplemental values?

Yes No NA

Description:

The BLM identified variety of geological features and wildlife habitat, which the earlier BLM inventory for the adjacent WSA also recognized as being present.

Subunit F – Curie Canyon

Location: All public lands in T. 2 S., R 18 E., Sections 28 and 19. The subunit consists of two small parcels bordered on the east by public lands managed by the BLM as the Lower John Day WSA. The remainder of the boundary is private lands. The two parcels include two forks of the upper end of Curie Canyon, and a knoll located between Curie Canyon and Dipping Vat Canyon, which all slope east wards towards the John Day River. The subunit size is approximately 238 acres.

(2) Is the unit in a natural condition?

Yes No NA

Describe

The BLM identified no man-made features. The lands are in the BLM Allotment # 2631, although it does not appear to be grazed due to the topography.

(3) Does the unit have outstanding opportunities for solitude?

Yes No NA

Description:

The outstanding opportunity for an expectation of solitude that exists along the John Day River and was recognized for the adjacent WSA during the initial inventory process is also present in Curie Canyon. The feeling of being alone in an isolated and uninhabited area is the dominate impression in the massive canyons along the river. It would be easy for the visitor to avoid sights and sounds of other people in the narrow and twisting canyons and along the side canyons.

OR-054-021/ Lower John Day WSA Additions Inventory Unit

4) Does the unit have outstanding opportunities for primitive and unconfined recreation?

Yes X No _____ NA _____

Description:

The subunit provides outstanding opportunities for primitive recreation, and which was also noted in the initial BLM inventory.

(5) Does the unit have supplemental values?

Yes X No _____ NA _____

Description:

The BLM identified variety of geological features and wildlife habitat, which the earlier BLM inventory for the adjacent WSA also recognized as being present.

OR-054-021/ Lower John Day WSA Additions Inventory Unit

Prepared by:

Team Members: (Names, Titles, Date)

Initial Review Aug. 14, 2007 by: Heidi Mottl (Recreation/Wilderness), Teal Purrington (NEPA/Planning), Dorothy Thomas (GIS), Anna Smith (Hydrology), Mike Tietmeyer (Range), Dan Tippy (Assistant Field Manager), Rick Demmer (Riparian), Monte Kuk (Wildlife), Robert Vidourek (Forestry), Mike Williams (Planning), Berry Phelps (Recreation), Craig Obermiller (Range), John Morris (Fish), Dana Cork (Transportation), Christina M. Welch (Field Manager), Don Tschida (Fire), Gavin Hoban (GIS), John Zancanella (Cultural), JoAnne Armson (Plants).

Realty/Mineral Records researched by Timothy Finger, BLM Wilderness Specialist on detail from Richland, UT, October, 2008.

Approved by:

Christina M. Welch
Field Manager

Oct. 31, 2007
Date

This form documents information that constitutes an inventory finding on wilderness characteristics. It does not represent a formal land use allocation or a final agency decision subject to administrative remedies under either 43 CFR parts 4 or 1610.5-2.

OR-054-021/ Lower John Day WSA Additions Inventory Unit

PURPOSE:

This addendum provides signatory authority across gaps in supervisory oversight in the preparation process.

DISCUSSION:

Further study has been conducted to validate the findings approved by the original signator, Christina Welch. As the new Field Manger for the Resource Area and Ms. Welch's replacement I have been briefed by the specialists assigned on the contents and underlying rationale for the findings contained in this document. I approve these findings with my signature below.

APPROVED BY:



SIGNATURE

Thursday, July 08, 2010

John Day Basin RMP Road Analysis Form

(Factors to consider when determining whether a route is a road for wilderness inventory purposes.)

Wilderness Inventory Area Name and Number (UNIT_ID): Lower John Day WSA Additions (OR-054-021)

Route Name and/or Identifier: Route A in Subunit A (Labeled as Route A on Map 1)

I. LOCATION: Please refer to attached Map 1 and BLM corporate data (GIS). Route begins in T 1 S., R 19 E., Section 17 at its junction with Oregon State Highway 206. It terminates approximately 2.5 miles to the southwest at the banks of the John Day River on private lands being purchased by Oregon Parks and Recreation Department (OPRD).

II. CURRENT PURPOSE OF ROUTE: The route provides access for private lands being purchased by OPRD for inclusion in Cottonwood Canyon State Park. The route previously provided access for grazing management, but this BLM grazing allotment is currently being rested, and the future grazing status of this allotment has not been determined.

III. ROAD RIGHT-OF-WAY:

Yes ___ No X Unknown ___

IV. CONSTRUCTION

Yes X No _____

Examples:

Paved _____ Bladed X Graveled _____ Roadside Berms _____
Cut/Fill _____ Other _____

In a few places this route is located along the base of the cliffs at the edge of the John Day River, where portions of the cliff appear to have been shaved away with heavy equipment in order to provide space for the road between the cliff and the river.

V. IMPROVEMENTS

Yes ___ No _____ Unknown X

By Hand Tools _____ By Machine _____

Culverts _____ Stream Crossings _____ Bridges _____ Drainage _____ Barriers _____ Other _____

OR-054-021/ Lower John Day WSA Additions Inventory Unit

VI. MAINTENANCE:

A. Is their Evidence or Documentation of Maintenance using hand tools or machinery?

Yes X No _____

Hand Tools (Y/N) Machine (Y/N) Y

Explain: See BLM FAMS data in reference section. Is it scheduled route to receive maintenance? No. The route has received periodic maintenance by the grazing permittee.

B. If route is in good condition, but there is no evidence of maintenance, would mechanical maintenance with hand tools or machines be approved by BLM in the event this route became impassable?

Yes _____ No _____ N/A X

Comments: The route is not scheduled to receive maintenance by BLM. The private lands the road accesses are in the process of being purchased by Oregon Parks and Recreation Department for recreation uses. OPRD has not made a final decision about the future use of Route A. BLM has advised OPRD officials that BLM would prefer the route be closed to motorized use to be consistent with management of the surrounding Federal lands which have been found to possess wilderness characteristics or are already within a Wilderness Study Area. Also, the route is subject to safety concerns from falling rocks and high maintenance costs.

VII. REGULAR AND CONTINUOUS USE:

Yes X No _____

VIII. CONCLUSION:

To meet the definition of a road, items IV or V, *and* VI-A or B, *and* VII must be checked yes.

Road: Yes X No _____

Explanation: BLM does not intend to maintain this route however BLM would consider allowing OPRD to maintain the route for a short distance across BLM land if they feel it is necessary for the operation of the new state park.

Evaluator(s): Heidi Mottl Date: 9/30/07, 5/1/10

* **road:** An access route which has been **improved and maintained by mechanical means** to insure **relatively regular and continuous use**. A way maintained solely by the passage of vehicles does not constitute a road.

OR-054-021/ Lower John Day WSA Additions Inventory Unit

a. **“Improved and maintained”** – Actions taken physically by people to keep the road open to vehicle traffic. “Improved” does not necessarily mean formal construction. “Maintained” does not necessarily mean annual maintenance.

b. **“Mechanical means”** – Use of hand or power machinery or tools.

c. **“Relatively regular and continuous use”** – Vehicular use that has occurred and will continue to occur on a relatively regular basis. Examples are: access roads for equipment to maintain a stock water tank or other established water sources; access roads to maintained recreation sites or facilities; or access roads to mining claims.

John Day Basin RMP Road Analysis Form

(Factors to consider when determining whether a route is a road for wilderness inventory purposes.)

Wilderness Inventory Area Name and Number (UNIT_ID): Lower John Day WSA Additions (OR-054-021)

Route Name and/or Identifier: Route B in Subunits D and E (Labeled as Route B on Map 2), known locally as Owens Basin Road.

I. LOCATION: Please refer to attached Map 2 and BLM corporate data (GIS). Route enters BLM in T. 2 S., R 19 E., Section 18, and terminates in T 2 S., R 18 E., Section 24 where it enters private lands near the John Day River. A portion of this route forms part of the boundary of the Lower John Day WSA, with public lands located on both sides of the route.

II. CURRENT PURPOSE OF ROUTE: The route provides access to private lands located at the mouth of Ferry Canyon, and for grazing management and other administrative uses.

III. ROAD RIGHT-OF-WAY:

Yes ___ No X Unknown ___

IV. CONSTRUCTION

Yes X No _____

Examples:

Paved _____ Bladed X Graveled _____ Roadside Berms _____
Cut/Fill _____ Other _____

V. IMPROVEMENTS

Yes _____ No _____ Unknown X

By Hand Tools _____ By Machine _____

Culverts _____ Stream Crossings _____ Bridges _____ Drainage _____ Barriers _____ Other _____

VI. MAINTENANCE:

A. Is there Evidence or Documentation of Maintenance using hand tools or machinery?

OR-054-021/ Lower John Day WSA Additions Inventory Unit

Yes No _____

Hand Tools ___(Y/N)___ Machine ___(Y/N)___ Y

Explain: See BLM FAMS data in reference section. Is it scheduled route to receive maintenance? No. The route has received periodic maintenance by the grazing permittee.

B. If route is in good condition, but there is no evidence of maintenance, would mechanical maintenance with hand tools or machines be approved by BLM in the event this route became impassable?

Yes No _____ N/A _____

VII. REGULAR AND CONTINUOUS USE:

Yes No _____

VIII. CONCLUSION:

To meet the definition of a road, items IV or V, *and* VI-A or B, *and* VII must be checked yes.

Road: Yes No _____

Explanation: The BLM has determined that this route is the best (from an ecological standpoint) of three possible routes to provide access to the private property at the mouth of Ferry Canyon. The other two routes, Ferry Canyon Road and Rose Briar Road, will be closed to motorized vehicles. This route will remain open.

Evaluator(s): Heidi Mottl Date: 9/30/07, 5/1/10

* **road:** An access route which has been **improved and maintained by mechanical means** to insure **relatively regular and continuous use**. A way maintained solely by the passage of vehicles does not constitute a road.

a. **“Improved and maintained”** – Actions taken physically by people to keep the road open to vehicle traffic. “Improved” does not necessarily mean formal construction. “Maintained” does not necessarily mean annual maintenance.

b. **“Mechanical means”** – Use of hand or power machinery or tools.

c. **“Relatively regular and continuous use”** – Vehicular use that has occurred and will continue to occur on a relatively regular basis. Examples are: access roads for equipment to maintain a stock water tank or other established water sources; access roads to maintained recreation sites or facilities; or access roads to mining claims.

John Day Basin RMP Road Analysis Form

(Factors to consider when determining whether a route is a road for wilderness inventory purposes.)

Wilderness Inventory Area Name and Number (UNIT_ID): Lower John Day WSA Additions (OR-054-021)

Route Name and/or Identifier: Route C in Subunit E (Labeled as Route C on Map 2), known locally as Rose Briar Road.

I. LOCATION: Please refer to attached Map 2 and BLM corporate data (GIS). The route enters public lands in Rose Briar Canyon in T. 2 S., R 19 E., at the Section 19/30 line. The route travels for approximately 1/4 mile down the Rose Briar Canyon where it intersects with Ferry Canyon Road on BLM lands. This route forms part of the boundary of the Lower John Day WSA, with public lands located on both sides of the route.

II. CURRENT PURPOSE OF ROUTE: The route is in poor condition and is not currently used.

III. ROAD RIGHT-OF-WAY:

Yes ___ No Unknown ___

IV. CONSTRUCTION

Yes No ___

Examples:

Paved ___ Bladed Graveled ___ Roadside Berms ___
Cut/Fill ___ Other ___

V. IMPROVEMENTS

Yes ___ No ___ Unknown

By Hand Tools ___ By Machine ___

Culverts ___ Stream Crossings ___ Bridges ___ Drainage ___ Barriers ___ Other ___

VI. MAINTENANCE:

OR-054-021/ Lower John Day WSA Additions Inventory Unit

A. Is their Evidence or Documentation of Maintenance using hand tools or machinery?

Yes No _____

Hand Tools ___(Y/N)___ Machine ___(Y/N)___ Y

Explain: See BLM FAMS data in reference section. Is it scheduled route to receive maintenance? No.

Although the route has been maintained by the grazing permittee in the distant past, this route has not received maintenance in many years, is not scheduled for maintenance, and is not included in the FAMS database.

B. If route is in good condition, but there is no evidence of maintenance, would mechanical maintenance with hand tools or machines be approved by BLM in the event this route became impassable?

Yes _____ No N/A _____

VII. REGULAR AND CONTINUOUS USE:

Yes No _____

VIII. CONCLUSION:

To meet the definition of a road, items IV or V, *and* VI-A or B, *and* VII must be checked yes.

Road: Yes No _____

Explanation: Although the road analysis determined this route to be a road, this route is currently in poor condition and is naturally rehabilitating. BLM intends to close this route to motorized use and instead use Owens Basin Road for access to the mouth of Ferry Canyon. Of the three routes currently providing access to the private property at the mouth of Ferry Canyon, the BLM has determined that Owens Basin Road is the best suited for vehicle use, from an ecological standpoint. The other two routes, Ferry Canyon Road and Rose Briar Road, will be closed to motorized vehicles.

Evaluator(s): Heidi Mottl Date: 9/30/07, 5/1/10

* **road:** An access route which has been **improved and maintained by mechanical means** to insure **relatively regular and continuous use**. A way maintained solely by the passage of vehicles does not constitute a road.

OR-054-021/ Lower John Day WSA Additions Inventory Unit

a. **“Improved and maintained”** – Actions taken physically by people to keep the road open to vehicle traffic. “Improved” does not necessarily mean formal construction. “Maintained” does not necessarily mean annual maintenance.

b. **“Mechanical means”** – Use of hand or power machinery or tools.

c. **“Relatively regular and continuous use”** – Vehicular use that has occurred and will continue to occur on a relatively regular basis. Examples are: access roads for equipment to maintain a stock water tank or other established water sources; access roads to maintained recreation sites or facilities; or access roads to mining claims.

John Day Basin RMP Road Analysis Form

(Factors to consider when determining whether a route is a road for wilderness inventory purposes.)

Wilderness Inventory Area Name and Number (UNIT_ID): Lower John Day WSA Additions (OR-054-021)

Route Name and/or Identifier: Route D in Subunit E (Labeled as Route D on Map 2), known locally as Ferry Canyon Road.

I. LOCATION: Please refer to attached Map 2 and BLM corporate data (GIS). The route enters public lands in T. 2 S., R 19 E., Section 32, and travels down Ferry Canyon towards the John Day River. The route travels through public lands for about 1.5 miles, leaves public lands for a short distance, then re-enters public lands to continue for about ¾ mile more. The route ends where it enters private lands about ½ mile from the river at the T. 2 S., R 19 E., Section 19/24 line. A portion of this route forms part of the boundary of the Lower John Day WSA.

II. CURRENT PURPOSE OF ROUTE: The route is in poor condition and is not currently passable by full sized vehicles.

III. ROAD RIGHT-OF-WAY:

Yes _____ No X Unknown _____

IV. CONSTRUCTION

Yes _____ No X

Examples:

Paved _____ Bladed _____ Graveled _____ Roadside Berms _____
Cut/Fill _____ Other _____

V. IMPROVEMENTS

Yes _____ No X

By Hand Tools _____ By Machine _____

Culverts _____ Stream Crossings _____ Bridges _____ Drainage _____ Barriers _____ Other _____

OR-054-021/ Lower John Day WSA Additions Inventory Unit

VI. MAINTENANCE:

A. Is their Evidence or Documentation of Maintenance using hand tools or machinery?

Yes _____ No X _____

Hand Tools ___(Y/N)_____ Machine ___(Y/N)_____

Explain: See BLM FAMS data in reference section. Is it scheduled route to receive maintenance? No.

B. If route is in good condition, but there is no evidence of maintenance, would mechanical maintenance with hand tools or machines be approved by BLM in the event this route became impassable?

Yes _____ No X N/A _____

VII. REGULAR AND CONTINUOUS USE:

Yes X _____ No _____

VIII. CONCLUSION:

To meet the definition of a road, items IV or V, *and* VI-A or B, *and* VII must be checked yes.

Road: Yes _____ No X _____

Explanation: This route is currently in poor condition and is naturally rehabilitating. BLM intends to close this route to motorized use and instead use Owens Basin Road for access to the mouth of Ferry Canyon. Of the three routes currently providing access to the private property at the mouth of Ferry Canyon, the BLM has determined that Owens Basin Road is the best suited for vehicle use, from an ecological standpoint. The other two routes, Ferry Canyon Road and Rose Briar Road will be closed to motorized vehicles.

Evaluator(s): Heidi Mottl Date: 9/30/07, 5/1/10

* **road:** An access route which has been **improved and maintained** by **mechanical means** to insure **relatively regular and continuous use**. A way maintained solely by the passage of vehicles does not constitute a road.

a. **“Improved and maintained”** – Actions taken physically by people to keep the road open to vehicle traffic. “Improved” does not necessarily mean formal construction. “Maintained” does not necessarily mean annual maintenance.

b. **“Mechanical means”** – Use of hand or power machinery or tools.

OR-054-021/ Lower John Day WSA Additions Inventory Unit

c. **“Relatively regular and continuous use”** – Vehicular use that has occurred and will continue to occur on a relatively regular basis. Examples are: access roads for equipment to maintain a stock water tank or other established water sources; access roads to maintained recreation sites or facilities; or access roads to mining claims.

John Day Basin RMP Road Analysis Form

(Factors to consider when determining whether a route is a road for wilderness inventory purposes.)

Wilderness Inventory Area Name and Number (UNIT_ID): Lower John Day WSA Additions (OR-054-021)

Route Name and/or Identifier: Route E in Subunit B (Labeled as Route E on Map 1).

I. LOCATION: Please refer to attached Map 1 and BLM corporate data (GIS). The route begins at Highway 206 on OPRD land, enters public lands in T. 1 S., R 19 E., Section 20, and travels along the south side of the John Day River crossing in and out of BLM and OPRD lands for approximately 1.5 miles, terminating on public lands in T. 1 S., R. 19 E., Section 19, SW ¼.

II. CURRENT PURPOSE OF ROUTE: The route provides access to Cottonwood Canyon State Park lands. The route previously provided access for grazing management, but this BLM grazing allotment is currently being rested, and the future grazing status of this allotment has not been determined.

III. ROAD RIGHT-OF-WAY:

Yes ___ No X Unknown ___

IV. CONSTRUCTION

Yes _____ No X _____

Examples:

Paved _____ Bladed _____ Graveled _____ Roadside Berms _____
Cut/Fill _____ Other _____

V. IMPROVEMENTS

Yes _____ No X _____

By Hand Tools _____ By Machine _____

Culverts _____ Stream Crossings _____ Bridges _____ Drainage _____ Barriers _____ Other _____

VI. MAINTENANCE:

OR-054-021/ Lower John Day WSA Additions Inventory Unit

A. Is their Evidence or Documentation of Maintenance using hand tools or machinery?
Yes _____ No _____ Unknown

Hand Tools ___(Y/N)___ Machine ___(Y/N)___

Explain: See BLM FAMS data in reference section. Is it scheduled route to receive maintenance? No.

The route is not scheduled to receive maintenance by BLM. The route provides access to Cottonwood Canyon State Park lands. OPRD has not made a final decision about the future use of Route E. BLM has advised OPRD officials that BLM would prefer the route be closed to motorized use to be consistent with the surrounding federal lands which have been found to possess wilderness characteristics or are already within a Wilderness Study Area.

B. If route is in good condition, but there is no evidence of maintenance, would mechanical maintenance with hand tools or machines be approved by BLM in the event this route became impassable?

Yes _____ No N/A _____

VII. REGULAR AND CONTINUOUS USE:

Yes No _____

VIII. CONCLUSION:

To meet the definition of a road, items IV or V, *and* VI-A or B, *and* VII must be checked yes.
Road: Yes _____ No

Explanation: BLM does not intend to maintain this route however BLM would consider allowing OPRD to maintain the route for a short distance across BLM land if they feel it is necessary for the operation of the new state park.

Evaluator(s): Heidi Mottl Date: 9/30/07, 5/1/10

* **road:** An access route which has been **improved and maintained by mechanical means** to insure **relatively regular and continuous use**. A way maintained solely by the passage of vehicles does not constitute a road.

a. **“Improved and maintained”** – Actions taken physically by people to keep the road open to vehicle traffic. “Improved” does not necessarily mean formal construction. “Maintained” does not necessarily mean annual maintenance.

OR-054-021/ Lower John Day WSA Additions Inventory Unit

b. **“Mechanical means”** – Use of hand or power machinery or tools.

c. **“Relatively regular and continuous use”** – Vehicular use that has occurred and will continue to occur on a relatively regular basis. Examples are: access roads for equipment to maintain a stock water tank or other established water sources; access roads to maintained recreation sites or facilities; or access roads to mining claims.

OR-054-021/ Lower John Day WSA Additions Inventory Unit

John Day Basin Wilderness Characteristics – PHOTO LOG
(modify form as needed)

Photographer(s): Patrick Kollodge

Inventory Area Name & No.: OR-054-021/ Lower John Day WSA Additions
 Inventory Unit

Date	Frame #	Camera Direction	Description	GPS/UTM Location	Township	Range	Sec.
3/25/2010	1	West	Route A on BLM land at River Mile 41.4L, "Big Eddy"		1 South	19 East	19
3/25/2010	2	East	Standing on Route A at River Mile 41.0L showing constructed berm		1 South	19 East	19



Photo # 1



Photo # 2

REFERENCES

1. Lower John Day WSA Additions (subunits A, B, C, D, E, and F)

a. Realty program

Master Title Plats: T. 1 S., R. 18 E., T. 1 S., R. 19 E., T. 2 S., R. 18 E., T. 2 S., R. 19 E.
Case Files: Highway ROW (OR 0933), BPA Power-line ROW (OR 02451), BPA ROW
(OR 15910), BPA ROW (OR 010407)
Wild and Scenic River Withdrawal Order

b. Mineral Program

Oil and Gas Review
BLM LR 2000 program

c. GIS Program

USGS National Map project
BLM GIS data
BLM Lower John Day River public lands map, June 1991

d. Other Sources

USGS 7.5 minute Topographical Quadrangle Series, Essau Canyon. 1970.
USGS 7.5 minute Topographic Quadrangle Series, Harmony. 1971.
Oregon Parks and Recreation Department – map and personal communication
BLM FAMS Roads

Ferry Canyon Subunit Team Comments – 8/14/07:

Demmer-Is not a very good road.

Phelps-Rosebriar is more of a road, but Ferry Canyon is not much of a road. Original boundary is road – Berry says originally ID as a way, but John Murtha came to meeting and said that is a road. Now ONDA says it is a way.

Demmer – There was a homestead down at the confluence at one point.

Tippy- We called it a road in the original inventory.

Mottl – It was constructed, but are we going to maintain it now?

Welch-Is there a need for that road?

Tippy – Land owner and the BLM have used Owens Basin road.

Obermiller- The road through Ferry canyon Road is not used by BLM very much.

Welch- No one has a need for Ferry Canyon Road?

Obermiller- There is a huge side canyon.

Phelps-Area has naturalness features.

Boundary of
Subunit A

DEPARTMENT OF THE INTERIOR
BUREAU OF LAND MANAGEMENT
CASE RECORDATION
(MASS) Serial Register Page

Run Time 05:47 PM

Page 1 of 1

Run Date: 06/11/10

01 11-09-1921;042STAT0216.

Case Type 282105: FED AID HIGHWAY(SEC 17)

Commodity 971: NON-ENERGY FACILITIES

Case Disposition: AUTHORIZED

Total Acres
34.890

Serial Number
ORORE- 0 000933

Serial Number: ORORE- 0 000933

Name & Address		Int Rel	% Interest
OR-DEPT OF TRANS FED HWY ADM 530 CENTER ST NE	SALEM OR 97301	HOLDER/BILLEE	100.00000000

Serial Number: ORORE- 0 000933

Mer Twp Rng Sec	STyp	SNr Suff	Subdivision	District/Resource Area	County	Mgmt Agency
33 0010S 0190E 017	ALIQ		NWSW;	PRINEVILLE CENTRAL ORE	SHERMAN	BUREAU OF LAND MGMT
33 0010S 0190E 017	ALIQ		NWSW;	PRINEVILLE CENTRAL ORE	GILLIAM	BUREAU OF LAND MGMT
33 0010S 0190E 018	ALIQ		S2NE,NESE;	PRINEVILLE CENTRAL ORE	SHERMAN	BUREAU OF LAND MGMT
33 0010S 0190E 018	LOTS		01,02,06;	PRINEVILLE CENTRAL ORE	SHERMAN	BUREAU OF LAND MGMT

Serial Number: ORORE- 0 000933

Act Date	Code	Action	Action Remark	Pending Office
01/12/1948	387	CASE ESTABLISHED		
06/16/1950	111	RENTAL RECEIVED	\$0.00;	
06/16/1950	307	ROW GRANTED-ISSUED		
06/16/1950	503	LENGTH IN MILES	1.439;	
06/16/1950	504	WIDTH IN FEET (TOTAL)	200;	
01/01/9999	763	EXPIRES		

Serial Number: ORORE- 0 000933

Line Nr	Remarks
0001	HIGHWAY RIGHT-OF-WAY

Boundary of Subunit A

DEPARTMENT OF THE INTERIOR
BUREAU OF LAND MANAGEMENT
CASE RECORDATION
(MASS) Serial Register Page

Run Time 05:49 PM

Page 1 of 2

Run Date: 06/11/10

41 01-13-1916;44LD513
Case Type 281008: ROW-ROADS FED 44LD513
Commodity 971: NON-ENERGY FACILITIES
Case Disposition: AUTHORIZED

Total Acres
332.420

Serial Number
ORORE- 0 002451

Serial Number: ORORE- 0 002451

Name & Address	Int Rel	% Interest
BONNEVILLE POWER ADMN PO BOX 3621 PORTLAND OR 97208	HOLDING AGENCY	100.000000000

Serial Number: ORORE- 0 002451

Mer Twp	Rng	Sec	S Typ	SNr Suff	Subdivision	District/Resource Area	County	Mgmt Agency
33 0010S 0180E 024			ALIQ		NENE,SWSW;	PRINEVILLE CENTRAL ORE	SHERMAN	BUREAU OF LAND MGMT
33 0010S 0180E 026			ALIQ		SWNE;	PRINEVILLE CENTRAL ORE	SHERMAN	BUREAU OF LAND MGMT
33 0010N 0190E 013			ALIQ		S2S2;	PRINEVILLE CENTRAL ORE	GILLIAM	BUREAU OF LAND MGMT
33 0010N 0190E 014			ALIQ		S2SE;	PRINEVILLE CENTRAL ORE	SHERMAN	BUREAU OF LAND MGMT
33 0010N 0190E 014			ALIQ		S2SE;	PRINEVILLE CENTRAL ORE	GILLIAM	BUREAU OF LAND MGMT
33 0010S 0190E 003			ALIQ		SWSE;	PRINEVILLE CENTRAL ORE	SHERMAN	BUREAU OF LAND MGMT
33 0010S 0190E 007			LOTS		9;	PRINEVILLE CENTRAL ORE	SHERMAN	BUREAU OF LAND MGMT
33 0010S 0190E 008			ALIQ		SESW;	PRINEVILLE CENTRAL ORE	SHERMAN	BUREAU OF LAND MGMT
33 0010S 0190E 009			LOTS		1;	PRINEVILLE CENTRAL ORE	SHERMAN	BUREAU OF LAND MGMT
33 0010S 0190E 018			ALIQ		N2NE,SWNE,NENE;	PRINEVILLE CENTRAL ORE	SHERMAN	BUREAU OF LAND MGMT
33 0010S 0190E 018			LOTS		6;	PRINEVILLE CENTRAL ORE	SHERMAN	BUREAU OF LAND MGMT
33 0010S 0190E 019			LOTS		3;	PRINEVILLE CENTRAL ORE	SHERMAN	BUREAU OF LAND MGMT
33 0020N 0200E 024			ALIQ		NWNE;	PRINEVILLE CENTRAL ORE	GILLIAM	BUREAU OF LAND MGMT
33 0030N 0220E 010			ALIQ		SESE;	PRINEVILLE CENTRAL ORE	GILLIAM	BUREAU OF LAND MGMT
33 0030N 0220E 012			ALIQ		SWNW,NWSW;	PRINEVILLE CENTRAL ORE	GILLIAM	BUREAU OF LAND MGMT
33 0030N 0220E 014			ALIQ		NWNW;	PRINEVILLE CENTRAL ORE	GILLIAM	BUREAU OF LAND MGMT
33 0030N 0220E 020			ALIQ		N2NE,E2NW;	PRINEVILLE CENTRAL ORE	GILLIAM	BUREAU OF LAND MGMT
33 0030N 0230E 004			LOTS		3,4;	VALE BAKER	MORROW	BUREAU OF LAND MGMT
33 0040N 0230E 024			ALIQ		S2SE;	VALE BAKER	MORROW	BUREAU OF LAND MGMT
33 0040N 0230E 026			ALIQ		S2SE;	VALE BAKER	MORROW	BUREAU OF LAND MGMT
33 0040N 0230E 034			ALIQ		SWNE,SENW,NESW;	VALE BAKER	MORROW	BUREAU OF LAND MGMT
33 0040N 0250E 012			ALIQ		NENE,S2N2,N2SW;	VALE BAKER	MORROW	BUREAU OF LAND MGMT
33 0040N 0260E 004			ALIQ		S2NW,NWSW;	VALE BAKER	MORROW	BUREAU OF LAND MGMT
33 0040N 0260E 006			ALIQ		S2SE;	VALE BAKER	MORROW	BUREAU OF LAND MGMT
33 0050N 0260E 034			ALIQ		S2SE,SESW;	VALE BAKER	MORROW	BUREAU OF LAND MGMT
33 0050N 0270E 022			ALIQ		SESE;	VALE BAKER	UMATILLA	BUREAU OF LAND MGMT
33 0050N 0270E 024			ALIQ		SENE,N2S2,SWSW;	VALE BAKER	UMATILLA	BUREAU OF LAND MGMT
33 0050N 0270E 026			ALIQ		NWNW;	VALE BAKER	UMATILLA	BUREAU OF LAND MGMT
33 0050N 0270E 028			ALIQ		S2N2,N2SW;	VALE BAKER	MORROW	BUREAU OF LAND MGMT
33 0050N 0270E 030			ALIQ		SWSE,SESW;	VALE BAKER	MORROW	BUREAU OF LAND MGMT

Serial Number: ORORE- 0 002451

Act Date	Code	Action	Action Remark	Pending Office
07/18/1952	124	APLN RECD		
09/15/1952	307	ROW GRANTED-ISSUED		
09/15/1952	503	LENGTH IN MILES	10.97;	
09/15/1952	504	WIDTH IN FEET (TOTAL)	250;	
07/03/1989	974	AUTOMATED RECORD VERIF	PLP;	

Serial Number: ORORE- 0 002451

Line Nr	Remarks
0001	TRANSMISSION LINE
0002	1.82 MILES OF ACCESS ROAD,IN 1N 19E SECS 13 & 14, .
0003	1S 19E SECS 7 & 18

NO WARRANTY IS MADE BY BLM FOR USE OF THE DATA FOR PURPOSES NOT INTENDED BY BLM

**DEPARTMENT OF THE INTERIOR
BUREAU OF LAND MANAGEMENT
CASE RECORDATION
(MASS) Serial Register Page**

Run Time 05:49 PM

Page 2 of 2

Run Date: 06/11/10

Boundary of
Subunit A

DEPARTMENT OF THE INTERIOR
BUREAU OF LAND MANAGEMENT
CASE RECORDATION
(MASS) Serial Register Page

Run Time 06:23 PM

Page 1 of 1

Run Date: 06/11/10

01 10-21-1976;090STAT2781;43USC1767
Case Type 285007: ROW-PWR LINE FED FAC
Commodity 970: OTHER ENERGY FACILITIES
Case Disposition: AUTHORIZED

Total Acres
13.990

Serial Number
OROR-- - 015910

Serial Number: OROR-- - 015910

Name & Address	Int Rel	% Interest
BONNEVILLE POWER ADMN PO BOX 3621 PORTLAND OR 97208	HOLDING AGENCY	100.000000000

Serial Number: OROR-- - 015910

Mer Twp Rng Sec	STyp	SNr Suff	Subdivision	District/Resource Area	County	Mgmt Agency
33 0050S 0110E 035	LOTS	4;		PRINEVILLE DESCHUTES	WASCO	WARM SPRINGS
33 0050S 0110E 035	LOTS	4;		PRINEVILLE DESCHUTES	WASCO	BUREAU OF LAND MGMT
33 0050S 0110E 035	LOTS	4;		PRINEVILLE	WASCO	WARM SPRINGS
33 0040S 0140E 029	ALIQ	S2SE;		PRINEVILLE DESCHUTES	WASCO	BUREAU OF LAND MGMT
33 0040S 0140E 032	ALIQ	N2NE;		PRINEVILLE DESCHUTES	WASCO	BUREAU OF LAND MGMT
33 0040S 0150E 019	ALIQ	NESW,NWSE;		PRINEVILLE DESCHUTES	SHERMAN	BUREAU OF LAND MGMT
33 0010S 0180E 024	ALIQ	NENE;		PRINEVILLE CENTRAL ORE	SHERMAN	BUREAU OF LAND MGMT
33 0010S 0190E 009	LOTS	1;		PRINEVILLE CENTRAL ORE	SHERMAN	BUREAU OF LAND MGMT
33 0010S 0190E 018	ALIQ	N2NE,SWNE;		PRINEVILLE CENTRAL ORE	SHERMAN	BUREAU OF LAND MGMT
33 0010S 0190E 018	LOTS	6;		PRINEVILLE CENTRAL ORE	SHERMAN	BUREAU OF LAND MGMT

Serial Number: OROR-- - 015910

Act Date	Code	Action	Action Remark	Pending Office
04/23/1976	124	APLN RECD		
01/11/1978	307	ROW GRANTED-ISSUED		
05/13/1979	153	POST AUTH APLN RECD		
05/14/1979	304	AUTH AMENDED/MODIFIED		
05/14/1979	502	LENGTH IN FEET	1150;	
05/14/1979	504	WIDTH IN FEET (TOTAL)	50;	
06/14/1979	153	POST AUTH APLN RECD		
06/15/1979	304	AUTH AMENDED/MODIFIED	ACCESS ROAD;	
02/10/1983	287	PROOF CONST/USE ACPT		
03/08/1990	974	AUTOMATED RECORD VERIF	JH;	

Serial Number: OROR-- - 015910

Line Nr	Remarks
0001	? ' X 2587' TRANS LINE, ? ' X 2628' ACCESS ROAD

Boundary of
Subunit B & C

DEPARTMENT OF THE INTERIOR
BUREAU OF LAND MANAGEMENT
CASE RECORDATION
(MASS) Serial Register Page

Run Time 05:59 PM

Page 1 of 2

Run Date: 06/11/10

01 10-21-1976;090STAT2776;43USC1761
Case Type 285003: ROW-POWER TRAN-FLPMA
Commodity 971: NON-ENERGY FACILITIES
Case Disposition: AUTHORIZED

Total Acres
30.510

Serial Number
ORORE- 0 010407

Serial Number: ORORE- 0 010407

Name & Address	Int Rel	% Interest
BONNEVILLE POWER ADMN PO BOX 3621 PORTLAND OR 97208	HOLDER	100.00000000

Serial Number: ORORE- 0 010407

Mer Twp Rng Sec	STyp	SNr Suff	Subdivision	District/Resource Area	County	Mgmt Agency
33 0010S 0190E 017	ALIQ		W2NW,NWSW;	PRINEVILLE CENTRAL ORE	SHERMAN	BUREAU OF LAND MGMT
33 0010S 0190E 017	ALIQ		W2NW,NWSW;	PRINEVILLE CENTRAL ORE	GILLIAM	BUREAU OF LAND MGMT
33 0010S 0190E 018	ALIQ		NENE;	PRINEVILLE CENTRAL ORE	SHERMAN	BUREAU OF LAND MGMT
33 0010S 0190E 020	ALIQ		NENW;	PRINEVILLE CENTRAL ORE	GILLIAM	BUREAU OF LAND MGMT
33 0010S 0190E 020	ALIQ		SW,E2NW;	PRINEVILLE CENTRAL ORE	GILLIAM	BUREAU OF LAND MGMT
33 0010S 0190E 029	ALIQ		NWNW;	PRINEVILLE CENTRAL ORE	GILLIAM	BUREAU OF LAND MGMT
33 0010S 0190E 029	ALIQ		NENW;	PRINEVILLE CENTRAL ORE	GILLIAM	BUREAU OF LAND MGMT
33 0010S 0190E 032	ALIQ		NWNW;	PRINEVILLE CENTRAL ORE	GILLIAM	BUREAU OF LAND MGMT
33 0020S 0190E 008	ALIQ		SWNE;	PRINEVILLE CENTRAL ORE	GILLIAM	BUREAU OF LAND MGMT
33 0020S 0190E 009	ALIQ		SESW;	PRINEVILLE CENTRAL ORE	GILLIAM	BUREAU OF LAND MGMT
33 0020S 0190E 023	ALIQ		SWSW;	PRINEVILLE CENTRAL ORE	GILLIAM	BUREAU OF LAND MGMT
33 0020S 0190E 023	ALIQ		SWSE;	PRINEVILLE CENTRAL ORE	GILLIAM	BUREAU OF LAND MGMT
33 0020S 0190E 025	ALIQ		NWNE;	PRINEVILLE CENTRAL ORE	GILLIAM	BUREAU OF LAND MGMT
33 0040S 0210E 032	ALIQ		W2SE,SESE;	PRINEVILLE CENTRAL ORE	GILLIAM	BUREAU OF LAND MGMT
33 0040S 0210E 033	ALIQ		S2SW;	PRINEVILLE CENTRAL ORE	GILLIAM	BUREAU OF LAND MGMT
33 0050S 0210E 004	LOTS		2;	PRINEVILLE CENTRAL ORE	GILLIAM	BUREAU OF LAND MGMT
33 0050S 0210E 005	LOTS		1;	PRINEVILLE CENTRAL ORE	GILLIAM	BUREAU OF LAND MGMT

Relinquished/Withdrawn Lands

Serial Number: ORORE- 0 010407

33 0010S 0190E 717	FF	1	NWNESW WDN;	PRINEVILLE CENTRAL ORE	SHERMAN	PRIVATE LANDS
33 0010S 0190E 717	FF	1	NWNESW WDN;	PRINEVILLE CENTRAL ORE	GILLIAM	PRIVATE LANDS
33 0020S 0200E 730	FF	1	LOT 12, SWSE WDN;	PRINEVILLE CENTRAL ORE	GILLIAM	BUREAU OF LAND MGMT
33 0020S 0200E 732	FF	1	N2NE WDN;	PRINEVILLE CENTRAL ORE	GILLIAM	BUREAU OF LAND MGMT

Serial Number: ORORE- 0 010407

Act Date	Code	Action	Action Remark	Pending Office
03/15/1960	124	APLN RECD		
03/15/1960	500	GEOGRAPHIC NAME	DEMOSS-FOSSIL;	
06/27/1960	307	ROW GRANTED-ISSUED		
10/11/1960	153	POST AUTH APLN RECD		
10/11/1960	304	AUTH AMENDED/MODIFIED		
10/11/1960	503	LENGTH IN MILES	VAR;	
10/11/1960	504	WIDTH IN FEET (TOTAL)	VAR;	
06/08/1961	304	AUTH AMENDED/MODIFIED		
03/19/2004	153	POST AUTH APLN RECD		
01/24/2006	304	AUTH AMENDED/MODIFIED		

Serial Number: ORORE- 0 010407

Line Nr	Remarks
0001	TRANS.LINE & ACCESS ROAD RIGHT-OF-WAY DEMOSS-FOSSIL
0002	TRANS LINE = 2.48 MILES X 100'
0003	ACCESS ROAD = 2.03 MILES X 40'
0004	TRNS LINE 4.07 MILES X 100FT

**DEPARTMENT OF THE INTERIOR
BUREAU OF LAND MANAGEMENT
CASE RECORDATION
(MASS) Serial Register Page**

Run Time 05:59 PM

Page 2 of 2

Run Date: 06/11/10

**DEPARTMENT OF THE INTERIOR
BUREAU OF LAND MANAGEMENT
CASE RECORDATION
(MASS) Serial Register Page**

Run Time 06:55 PM

Page 1 of 1

Run Date: 06/11/10

01 10-02-1968;082STAT0912;16USC1277,1274

Total Acres

Serial Number

Case Type 231107: WDL-BLM W&SR

1.000

OROR-- - 044721

Commodity 001: NONE

Case Disposition: AUTHORIZED

Serial Number: OROR-- - 044721

Name & Address		Int Rel	% Interest
BLM-OREGON STATE OFFICE	PO BOX 2965	ADMIN MGT ENTITY	100.00000000

Serial Number: OROR-- - 044721

Mer Twp	Rng	Sec	STyp	SNr Suff	Subdivision	District/Resource Area	County	Mgmt Agency
33 0090S	0220E	001	FF	1	SUBUND;	PRINEVILLE CENTRAL ORE	WHEELER	BUREAU OF LAND MGMT

Serial Number: OROR-- - 044721

Act Date	Code	Action	Action Remark	Pending Office
10/28/1988	387	CASE ESTABLISHED		
10/28/1988	500	GEOGRAPHIC NAME	JOHN DAY W&S RIVER;	
10/28/1988	552	LAND SEGREGATED	FROM PUBLIC LAND LAWS	
10/28/1988	705	ORDER ISSUED	ACT OF CONGRESS;	
10/28/1988	868	EFFECTIVE DATE		

Serial Number: OROR-- - 044721

Line Nr	Remarks
0001	AUTH: PUBLIC LAW 100-557 OCT 28, 1988 (102 STAT 2782)

**DEPARTMENT OF THE INTERIOR
BUREAU OF LAND MANAGEMENT
CASE RECORDATION
(MASS) Serial Register Page**

Run Time 06:04 PM

Page 1 of 2

Run Date: 06/11/10

01 02-25-1920;041STAT0437;30USC226
Case Type 311111: O&G LSE NONCOMP PUB LAND
Commodity 459: OIL & GAS L
Case Disposition: CLOSED

Total Acres
7,628.350

Serial Number
OROR-- - 025017

Serial Number: OROR-- - 025017

Name & Address			Int Rel	% Interest
TYREX OIL CO	PO BOX 1348	CASPER WY 82602	LESSEE	0.000000000
UNION OIL CO OF CAL	PO BOX 7600	LOS ANGELES CA 90051	ASSIGNEE	100.000000000

Serial Number: OROR-- - 025017

Mer Twp Rng Sec	STyp	SNr Suff	Subdivision	District/Resource Area	County	Mgmt Agency
33 0010S 0190E 003	ALIQ		S2SE;	PRINEVILLE CENTRAL ORE	SHERMAN	BUREAU OF LAND MGMT
33 0010S 0190E 007	LOTS		5;	PRINEVILLE CENTRAL ORE	SHERMAN	BUREAU OF LAND MGMT
33 0010S 0190E 008	ALIQ		SESW,S2SE;	PRINEVILLE CENTRAL ORE	SHERMAN	BUREAU OF LAND MGMT
33 0010S 0190E 009	ALIQ		SENE,SE,S2SW;	PRINEVILLE CENTRAL ORE	SHERMAN	BUREAU OF LAND MGMT
33 0010S 0190E 009	LOTS		1;	PRINEVILLE CENTRAL ORE	SHERMAN	BUREAU OF LAND MGMT
33 0010S 0190E 010	ALIQ		S2N2,S2;	PRINEVILLE CENTRAL ORE	SHERMAN	BUREAU OF LAND MGMT
33 0010S 0190E 010	ALIQ		S2N2,S2;	PRINEVILLE CENTRAL ORE	GILLIAM	BUREAU OF LAND MGMT
33 0010S 0190E 010	LOTS		1-4;	PRINEVILLE CENTRAL ORE	SHERMAN	BUREAU OF LAND MGMT
33 0010S 0190E 015	ALIQ		W2,S2NE,W2SE,SESE,NENE;	PRINEVILLE CENTRAL ORE	SHERMAN	BUREAU OF LAND MGMT
33 0010S 0190E 015	ALIQ		W2,S2NE,W2SE,SESE,NENE;	PRINEVILLE CENTRAL ORE	GILLIAM	BUREAU OF LAND MGMT
33 0010S 0190E 017	ALIQ		NW,N2NE,NWSW,E2SE,SWSE;	PRINEVILLE CENTRAL ORE	GILLIAM	BUREAU OF LAND MGMT
33 0010S 0190E 017	ALIQ		NW,N2NE,NWSW,E2SE,SWSE;	PRINEVILLE CENTRAL ORE	SHERMAN	BUREAU OF LAND MGMT
33 0010S 0190E 018	ALIQ		NE,N2SE,SWSE;	PRINEVILLE CENTRAL ORE	SHERMAN	BUREAU OF LAND MGMT
33 0010S 0190E 018	LOTS		1-3,6,12;	PRINEVILLE CENTRAL ORE	SHERMAN	BUREAU OF LAND MGMT
33 0010S 0190E 019	ALIQ		SENE,SE;	PRINEVILLE CENTRAL ORE	GILLIAM	BUREAU OF LAND MGMT
33 0010S 0190E 019	LOTS		1-6,9-11;	PRINEVILLE CENTRAL ORE	SHERMAN	BUREAU OF LAND MGMT
33 0010S 0190E 019	LOTS		1-6,9-11;	PRINEVILLE CENTRAL ORE	GILLIAM	BUREAU OF LAND MGMT
33 0010S 0190E 020	ALIQ		N2,SW,W2SE,NESE;	PRINEVILLE CENTRAL ORE	GILLIAM	BUREAU OF LAND MGMT
33 0010S 0190E 021	ALIQ		N2,NESE,NWSW;	PRINEVILLE CENTRAL ORE	GILLIAM	BUREAU OF LAND MGMT
33 0010S 0190E 022	ALIQ		N2NE,NENW,SWNW,S2;	PRINEVILLE CENTRAL ORE	SHERMAN	BUREAU OF LAND MGMT
33 0010S 0190E 022	ALIQ		N2NE,NENW,SWNW,S2;	PRINEVILLE CENTRAL ORE	GILLIAM	BUREAU OF LAND MGMT
33 0010S 0190E 026	ALIQ		NE,N2NW,SENE,NESW,S2S2;	PRINEVILLE CENTRAL ORE	GILLIAM	BUREAU OF LAND MGMT
33 0010S 0190E 027	ALIQ		NE,E2NW,NWNW;	PRINEVILLE CENTRAL ORE	GILLIAM	BUREAU OF LAND MGMT
33 0010S 0190E 029	ALIQ		NE,NENW,E2SE;	PRINEVILLE CENTRAL ORE	GILLIAM	BUREAU OF LAND MGMT
33 0010S 0190E 030	ALIQ		E2E2,SWSE;	PRINEVILLE CENTRAL ORE	GILLIAM	BUREAU OF LAND MGMT
33 0010S 0190E 030	LOTS		2-6,8-10,12;	PRINEVILLE CENTRAL ORE	GILLIAM	BUREAU OF LAND MGMT
33 0010S 0190E 030	LOTS		2-6,8-10,12;	PRINEVILLE CENTRAL ORE	SHERMAN	BUREAU OF LAND MGMT
33 0010S 0190E 031	ALIQ		NE,E2SE;	PRINEVILLE CENTRAL ORE	GILLIAM	BUREAU OF LAND MGMT
33 0010S 0190E 031	LOTS		1,3,4,9;	PRINEVILLE CENTRAL ORE	SHERMAN	BUREAU OF LAND MGMT
33 0010S 0190E 031	LOTS		1,3,4,9;	PRINEVILLE CENTRAL ORE	GILLIAM	BUREAU OF LAND MGMT
33 0010S 0190E 032	ALIQ		W2W2,N2NE,SENE;	PRINEVILLE CENTRAL ORE	GILLIAM	BUREAU OF LAND MGMT
33 0010S 0190E 035	ALIQ		E2,E2NW,SW;	PRINEVILLE CENTRAL ORE	GILLIAM	BUREAU OF LAND MGMT

Relinquished/Withdrawn Lands

Serial Number: OROR-- - 025017

33 0010S 0190E 731	LOTS	7,8;	PRINEVILLE CENTRAL ORE	GILLIAM	BUREAU OF LAND MGMT
33 0010S 0190E 731	LOTS	7,8;	PRINEVILLE CENTRAL ORE	SHERMAN	BUREAU OF LAND MGMT

Serial Number: OROR-- - 025017

Act Date	Code	Action	Action Remark	Pending Office
10/14/1980	124	APLN RECD		
04/29/1982	126	APLN REJ/DEN IN PART		
05/24/1982	237	LEASE ISSUED		
07/01/1982	868	EFFECTIVE DATE		
07/23/1984	140	ASGN FILED		

DEPARTMENT OF THE INTERIOR
BUREAU OF LAND MANAGEMENT
CASE RECORDATION
(MASS) Serial Register Page

Run Time 06:04 PM

Page 2 of 2

Run Date: 06/11/10

10/16/1984	139	ASGN APPROVED	08/01/1984;EFF
07/01/1991	244	TERMINATED	
08/15/1991	791	TERMINAT'N NOTICE ISSUED	
10/15/1991	202	COMP PENDING	
10/15/1991	970	CASE CLOSED	
06/29/1994	163	CASE SENT TO NARA	SEA/049-94-0033;
06/29/1994	164	FRC RETRIEVAL NUMBERS	2-5/11973;

Line Nr

Remarks

Serial Number: OROR-- - 025017

0001	TYREX OIL CO ASGN 100% TO UNION OIL CO
------	--

RUN TIME: 02:32 PM

UNITED STATES DEPARTMENT OF INTERIOR
BUREAU OF LAND MANAGEMENT

RUN DATE: 06/11/2010

Geographic Report
(Case Recordation, Mining Claim, Status)

System Id = CR, MC, ST

Admin State = OR

Geo State =

Casetype Begins With

Casetype Txt =

Meridian Cd =

Township =

Range =

Mtrs = 33 0020S 0180E 019, 33 0020S 0180E 028, 33 0020S 0180E 777, 33 0020S 0180E 888, 33 0020S 0180E 999

Mer Twp Rng =

Case Disp Txt =

Total Rows Returned: 41

NO WARRANTY IS MADE BY BLM FOR USE OF THE DATA FOR
PURPOSES NOT INTENDED BY BLM

UNITED STATES DEPARTMENT OF INTERIOR
BUREAU OF LAND MANAGEMENT

GEOGRAPHIC REPORT
(CASE RECORDATION, MINING CLAIM, STATUS)
By MTRS

<u>Sys</u>	<u>Mer</u>	<u>Twn</u>	<u>Rng</u>	<u>Sec</u>	<u>Sur</u> <u>Typ</u>	<u>Sur</u> <u>Nr</u>	<u>Suff</u>	<u>Subdivision</u>	<u>Case</u> <u>Type</u>	<u>Serial Num</u>	<u>Case</u> <u>Disp</u>	<u>Disp</u> <u>Act Cd</u>	<u>Case</u> <u>Acres</u>
CR	33	0020S	0180E	019	ALIQ			NE;	311111	OROR 025021	CLOSED	970	9,859.440
CR	33	0020S	0180E	028	ALIQ			ALL;	311111	OROR 025021	CLOSED	970	9,859.440
CR	33	0020S	0180E	028	FF			ALL PUB LND;	246100	OROR 004377	AUTHORIZED	705	1.000

<u>Sys</u>	<u>Mer</u>	<u>Twn</u>	<u>Rng</u>	<u>Sec</u>	<u>Sur</u> <u>Typ</u>	<u>Sur</u> <u>Nr</u>	<u>Suff</u>	<u>NE NW SW SE</u> <u>NNSS NNSS NNSS NNSS</u> <u>EWWE EWWE EWWE EWWE</u>	<u>Case</u> <u>Type</u>	<u>Serial Num</u>	<u>Case</u> <u>Disp</u>	<u>Disp</u> <u>Act Cd</u>	<u>Case</u> <u>Acres</u>
ST	33	0020S	0180E	019	ALIQ			---- X--X ---- ----	251101	ORTD 0012378			
ST	33	0020S	0180E	019	ALIQ			XXXX ---- X--X ----	251104	ORTD 0025121			
ST	33	0020S	0180E	019	ALIQ			---- ---- X--X ----	272002	ORTDAA 068117			
ST	33	0020S	0180E	019	LOTS	1		---- -X-- ---- ----	251101	ORTD 0012378			
ST	33	0020S	0180E	019	LOTS	2		---- --X- ---- ----	251101	ORTD 0012378			
ST	33	0020S	0180E	019	LOTS	3		---- ---- -X-- ----	272002	ORTDAA 068117			
ST	33	0020S	0180E	019	LOTS	4		---- ---- --X- ----	272002	ORTDAA 068117			

NO WARRANTY IS MADE BY BLM FOR USE OF THE DATA FOR PURPOSES NOT INTENDED BY BLM

Run Time: 03:07 PM

UNITED STATES DEPARTMENT OF INTERIOR
BUREAU OF LAND MANAGEMENT

Run Date: 06/11/2010

Page 2 of 2

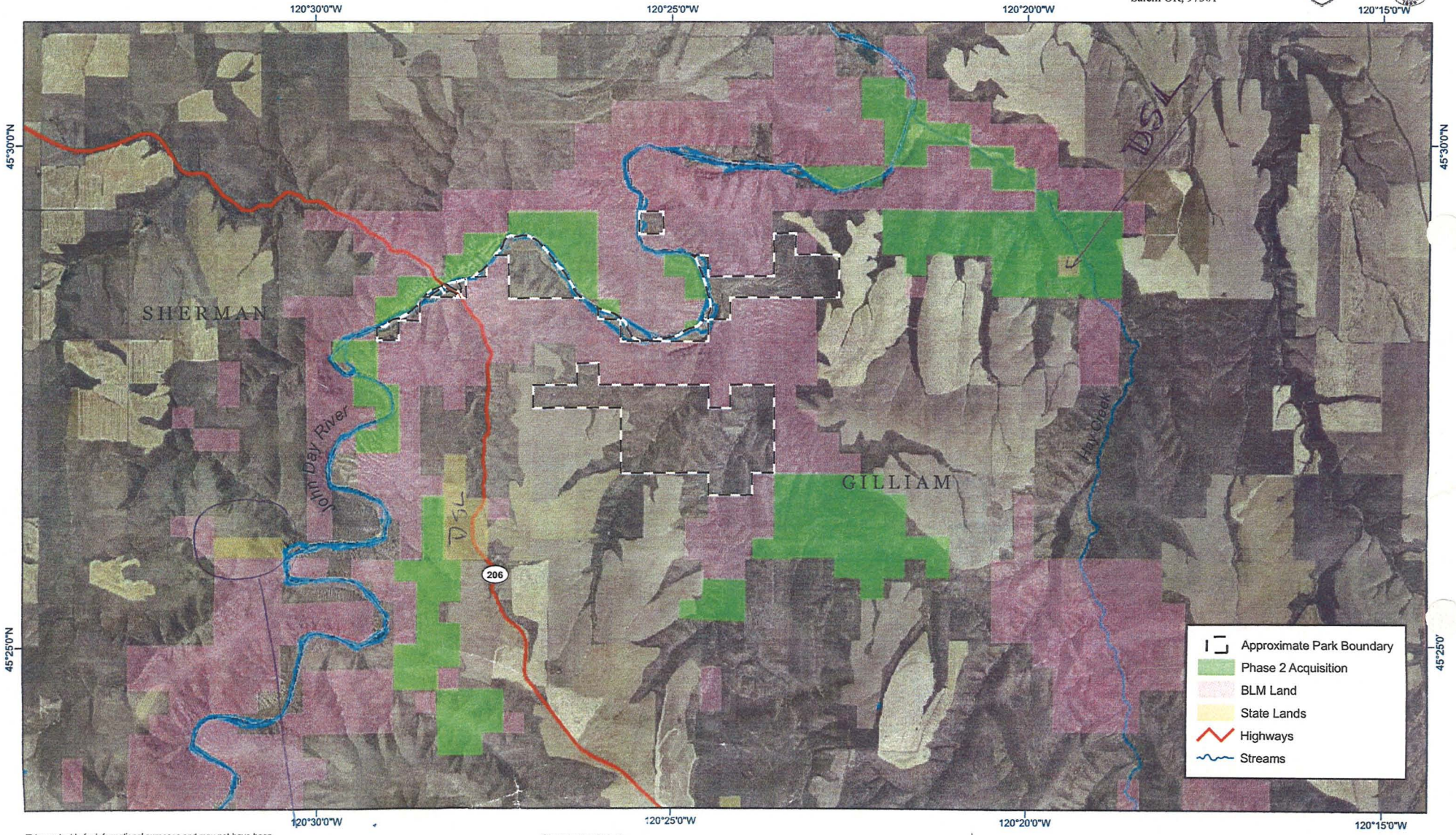
GEOGRAPHIC REPORT
(CASE RECORDATION, MINING CLAIM, STATUS)
By MTRS

<u>Sys</u>	<u>Mer</u>	<u>Twn</u>	<u>Rng</u>	<u>Sec</u>	<u>Typ</u>	<u>Sur</u> <u>Nr</u>	<u>Suff</u>	<u>NE</u> <u>NW</u> <u>SW</u> <u>SE</u> <u>NNSS NNSS NNSS NNSS</u> <u>EWWE EWWE EWWE EWWE</u>	<u>Case</u> <u>Type</u>	<u>Serial Num</u>	<u>Case</u> <u>Disp</u>	<u>Disp</u> <u>Act Cd</u>	<u>Case</u> <u>Acres</u>
ST	33	0020S	0180E	028	FF			ALL UNAPPR PD LANDS;	246100	OROR 004377			

COTTONWOOD CANYON STATE PARK

1/21/10

Oregon Parks & Recreation Dept.
725 Summer St. NE, Suite C
Salem OR, 97301



This product is for informational purposes and may not have been prepared for, or be suitable for legal, engineering, or surveying purposes. Users of this information should review or consult the primary data and information sources to ascertain the usability of the information.

Oregon Lambert Projection
Datum NAD 83

0 0.45 0.9 Miles

dcq 1/13/2010
N:\Parks\CottonwoodCanyon\ Cottonwoodcanyon_fig\Gvnerate_11r17.mxd

