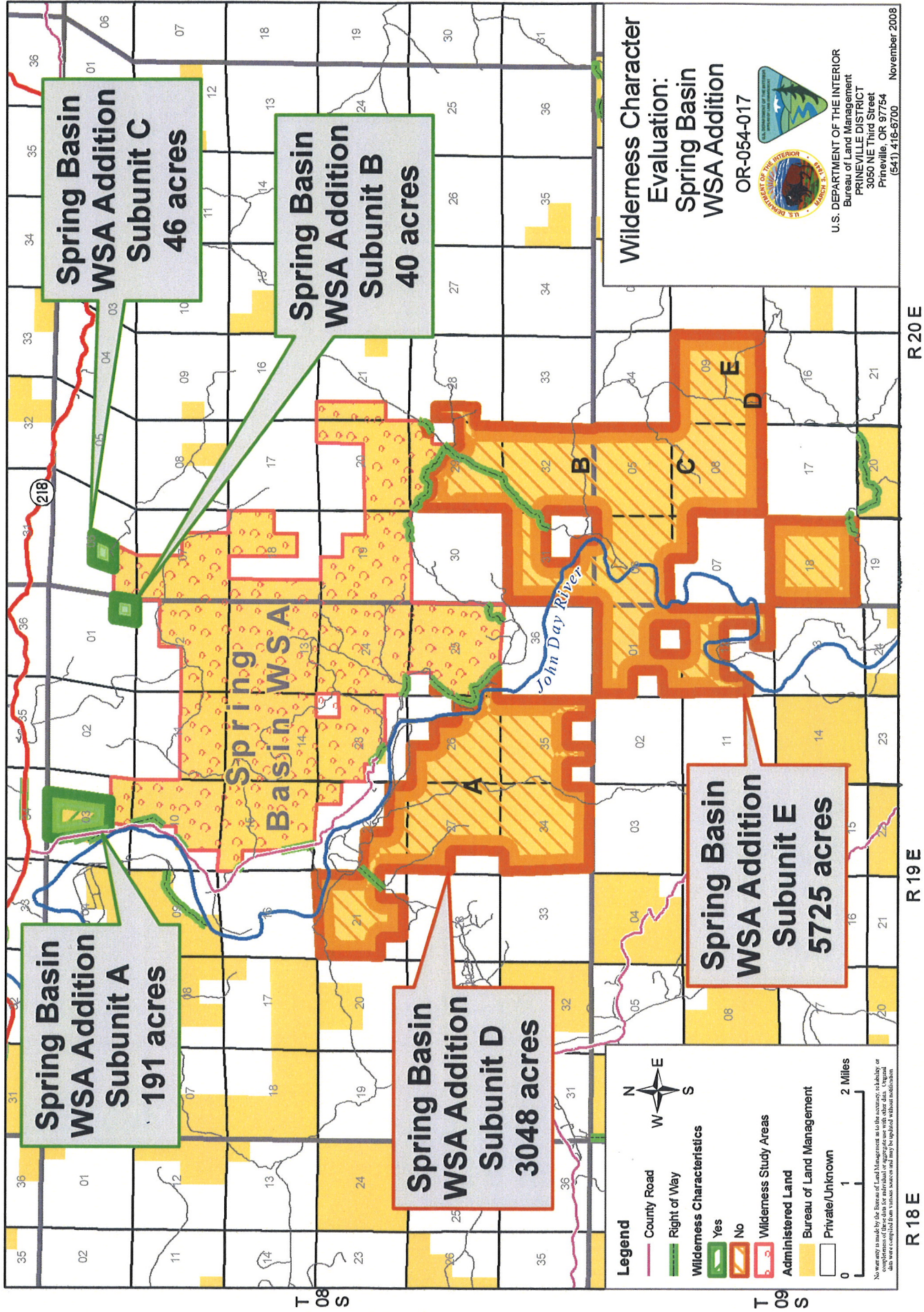


Map 1



2008 John Day Basin Wilderness Character Evaluation Form

Wilderness Character Evaluation For: OR-054-017/ Spring Basin WSA Addition Inventory Unit

1. Previous BLM wilderness inventory?

No _____ Yes _____ Partial X

a) Inventory Source: Bureau of Land Management, OR/WA, Initial Wilderness Inventory, August 1979, and Bureau of Land Management, OR/WA Final Intensive Inventory Decisions, November 1980.

b) Inventory Unit Name(s)/Number(s): Spring Basin / OR-05-009

c) Map Name(s)/Number(s): Final Decision-Initial Wilderness Inventory Map, August 1979

d) BLM District(s)/Field Office(s): Prineville District, Central Oregon Resource Area

Unit#/Name	Size (historic acres)	Natural Condition? Y/N	Outstanding Solitude? Y/N	Outstanding Primitive & Unconfined Recreation? Y/N	Supplemental Values? Y/N
OR-05-009 Spring Basin	6,283	Y	Y	Y	Y

2. New Wilderness Characteristic Review

Private Recommendation: Yes _____ No X by? _____ Date _____

Results of BLM Analysis: (separate by subunit if appropriate)

Unit#/Name	Size (acres)	Natural Condition? Y/N/NA	Outstanding Solitude? Y/N/NA	Outstanding Primitive & Unconfined Recreation? Y/N/NA	Supplemental Values? Y/N/NA
OR-054-017 Spring Basin WSA Addition Subunit A	191	Y	Y	Y	Y

OR-054-017/ Spring Basin WSA Addition Inventory Unit

(Northwest)					
OR-054-017 Spring Basin WSA Addition Subunit B (North Center)	40	Y	Y	Y	Y
OR-054-017 Spring Basin WSA Addition Subunit C (Northeast)	46	Y	Y	Y	Y
OR-054-017 Spring Basin WSA Addition Subunit D (Big Muddy)	3048	N/A	N/A	N/A	N/A
OR-054-017 Spring Basin WSA Addition Subunit E (Amine Canyon)	5725	Y	N	N	N/A

Conclusion

Check One:

☐ Area reviewed lacks sufficient size and does not meet one of the exceptions for small size.

☒ The area-or a portion of the area-has wilderness character.

☐ The area does not have wilderness character.

(1) Describe current conditions: (Include boundary features, land ownership, size, location, topography, vegetation features and summary of major human uses/activities).

OR-054-017/ Spring Basin WSA Addition Inventory Unit

Location: The lands are located in Jefferson, Wasco and Wheeler Counties, Oregon, 3 to 8 miles southeast of the community of Clarno. The inventory unit consists of five (5) separate subunits, all of which are located south of Oregon State Route 218, and are adjacent to the Spring Basin Wilderness Study Area (WSA) although Subunits D and E are separated from the WSA by Rights-of-Way.

Original Inventory

The lands in the 2007 inventory include lands previously inventoried for their wilderness characteristics under Section 603 of FLPMA. In August 1979, the initial BLM OR/WA Wilderness Inventory effort addressed the lands in Subunits A, B and C, and in 1980, the Intensive Wilderness Inventory for the Spring Basin Unit (OR-05-009) addressed these lands in detail. The Final Intensive Inventory Decisions in November 1980 dropped 301 acres within the Spring Basin Inventory Unit from further study stating that “the narrow projections of public land do not offer outstanding opportunities for primitive and unconfined types of recreation”. Subunits D and E have not been previously inventoried.

Description of Current Conditions

The 2007 subunits labeled as A, B and C, are the three parcels that were dropped from further wilderness consideration in 1980. Today’s computer-generated acreage figure for these three parcels combined is 277 acres.

Location of Subunits A, B, C, D and E:

Subunit A (Northwest) is located in Wheeler County adjacent to the northwest corner of Spring Basin WSA. The subunit area is approximately 191 acres in size. The subunit is bordered on the south side by the WSA and on the west side by a power line that runs along a Wheeler County maintained road (Clarno Road). The rest of the subunit is bordered by private lands owned by the Confederated Tribes of the Warm Springs Reservation and managed as part of the Pine Creek Conservation Area.

Subunit B (North Central) is located in Wheeler County adjacent to the north boundary of the WSA. This subunit is approximately 40 acres in size and is east of subunit A. The subunit is bordered on the east side by the WSA and is otherwise bordered by private lands owned by the Confederated Tribes of the Warm Springs Reservation and managed as part of the Pine Creek Conservation Area.

Subunit C (Northeast) is located in Wheeler County adjacent to the northeast corner of the WSA. This subunit is approximately 46 acres in size and is just east of Subunit B. The subunit is bordered on the south side by the WSA and is otherwise bordered by private lands owned by the Confederated Tribes of the Warm Springs Reservation and managed as part of the Pine Creek Conservation Area.

Subunit D (Big Muddy) is located in Wasco and Wheeler Counties, about 5 miles south of the community of Clarno. The subunit is located south of Oregon State Route 218 near the confluence of Big Muddy Creek and the John Day River. The majority of the 3,048 acre subunit is located on the west side of the John Day River in Wasco County, though the unit also includes approximately 1/2 mile of John Day River frontage and approximately 80 acres of land on the east side of the river in Wheeler County.

OR-054-017/ Spring Basin WSA Addition Inventory Unit

The subunit is bordered on the east side by a combination of private land and a road ROW that forms the boundary of the Spring Basin WSA in T 8 S, R 19 E, Sections 25 and 26. This ROW separates Subunit D from Spring Basin WSA. The subunit is bordered on all other sides by private land. A road ROW crosses through the northwest corner of the subunit in T 8 S, R 19 E, Section 21.

Subunit D is separated from the WSA by a ROW. At 3048 acres, the subunit lacks sufficient size to be considered as wilderness and does not meet one of the exceptions for small size. For this reason, Subunit D will not be discussed further in this document.

Recommendation: Re-inventory Subunit D if adjacent lands are acquired that enlarge the size of the subunit.

Subunit E (Amine Canyon) is located in Jefferson, Wasco and Wheeler Counties, about 8 miles southeast of the community of Clarno. The subunit is located south of Oregon State Route 218 near the confluence of Amine Canyon with the John Day River. At 5,725 acres, the irregular shaped subunit is located on both sides of the John Day River and includes approximately 4.5 miles of John Day River frontage. The subunit is bordered on the north by a combination of a road ROW and private land and on the east by private land owned by the Confederated Tribes of the Warm Springs Reservation and managed as part of the Pine Creek Conservation Area. The subunit is bordered on the south and west sides by a combination of Pine Creek Conservation Area land and other private land. The Subunit contains three in-holdings that vary in size from approximately 40 acres to 560 acres, which are owned by a combination of Oregon State Parks and Recreation Department, Pine Creek Conservation Area, and private landowners. Subunit E is separated from the Spring Basin WSA by the ROW which forms the boundary of the WSA, but at 5,725 acres, the subunit meets the size requirements on its own. Two road ROWs cross the subunit, one in the northeast portion of the subunit in T 8 S., R 20 E., Sections 29, 31 and 32 (Rhodes Canyon), and a second ROW in the south portion of the subunit in T 9 S., R 20 E., Section 18.

Location of Unit A: Portions of or all public lands in T 8 S., R 19 E., Section 3.

Location of Unit B: Portions of or all public lands in T 8 S., R 19 E., Section 1.

Location of Unit C: Portions of or all public lands which are not currently within the Spring Basin Wilderness Study Area (WSA) in T 8 S., R 20 E., Section 6.

Location of Unit D: Portions of or all public lands in T 8 S., R 19 E., Sections 21, 22, 25, 26, 27, 34, 35.

Location of Unit E: Portions of or all public lands in T 8 S., R 20 E., Sections 28, 29, 31, 32; T 9 S., R 19 E., Sections 1, 12; T 9 S., R 20 E., Sections 5, 6, 7, 8, 9, 18.

Description:

Subunit A is a grassy slope interspersed with basalt rock outcrops that drops steeply down to meet the flat floodplain of the John Day River. A County Road separates the unit from the John Day River, however, Subunit C is wholly within the John Day Wild and Scenic River boundary.

OR-054-017/ Spring Basin WSA Addition Inventory Unit

The vegetation on this west-facing slope is primarily bunchgrass. The BLM Visual Resource Management Class of Subunit A is Class II.

Subunits B and C are lands located on the side of a major north-facing slope that drops down to Pine Creek, a tributary of the John Day River. The vegetation consists primarily of bunchgrass, sage and rabbitbrush communities dotted with an occasional juniper tree. The BLM Visual Resource Management Class of Subunits B and C is 7

Subunit E is primarily made up of rugged rocky hills or knobs, cut by steep, narrow canyons and draws. The three main canyons, Rhodes, Rattlesnake, and Amine, join the John Day River from the east near River Mile 122. Soils are gravelly and erosion potential is high, with side canyons turning into gravel washes with the onset of annual thunderstorms. Terrain along the John Day River varies from broad sweeping floodplains dotted with sagebrush and juniper, to steep rocky cliff faces.

Vegetation consists primarily of bunchgrasses, sagebrush, bitterbrush and juniper. Wildlife populations of Subunits A, B, C and E include elk, mule deer, chukar, golden eagle, prairie falcon, bobcat, California quail, meadowlark and mountain bluebird.

Cultural Resources: Historically, the entire unit was used to graze cattle, and later sheep, from ranches based outside of the unit at Wagner and Pine Creek. A cultural inventory was conducted in 2006 within Subunit E prior to the Rattlesnake-Porcupine prescribed burn, primarily focused on historical remains that could be affected by fire. Subunit E contains remains of old corrals and wooden shacks that were built as "prove-up" cabins for homesteading and later used as line shacks for grazing operations. No evidence of farming was found. No cultural inventories have been conducted within Subunits A, B or C. Given their location, and proximity to known prehistoric sites, it is likely that hunting and gathering activities took place in each of the subunits and pre-contact sites could exist.

Man-made features: Subunit A has approximately 1.2 miles of fencing and one spring development located in close proximity to each other. These developments slightly diminish the naturalness in a small portion of Unit A but do not affect the naturalness in the majority of the unit. Subunit B and C have no known man-made improvements. Subunit E has three roads that cross the through the east side of the unit, through they do not completely bisect the unit. One is a road ROW in Rhodes Canyon that crosses through approximately 1.5 miles of the subunit, providing access to a private in-holding (Keys) within the subunit perimeter. The second road is Rattlesnake Canyon Road (see Road Analysis Form labeled "B") which crosses approximately 1 mile of the subunit and provides access to private land in Pine Creek Conservation Area. The third road is a very short segment of ROW that barely clips the corner of the subunit in T 9 S., R 20 E., Section 18.

Current Uses: Subunits A, B, C and E are authorized for commercial grazing under the following BLM permits: Subunit A (Rim Allotment #2649, Tripp Allotment # 2558, Catherine Maurer Allotment #2630), Subunit B (Spring Basin Allotment # 2536), Subunit C (Spring Basin Allotment # 2536), and Subunit E is partially allotted (Amine Peak #2633, Big Muddy #2512). Subunits A, B, and C have public non-motorized access via Spring Basin WSA or by crossing through the Pine Creek Conservation Area (permit required) and current uses include hiking, horseback riding, nature study, and big game and upland bird hunting. Subunit E is accessible to

OR-054-017/ Spring Basin WSA Addition Inventory Unit

the public via boat on the John Day River, or by crossing through from the Pine Creek Conservation Area (permit required). The BLM Visual Resource Management Class of Subunit E is a combination of Class II and Class III.

(2) Is the unit in a natural condition?

Yes X No _____ NA _____

Description:

Subunits A, B and C appear to have been affected primarily by the forces of nature with the impact of human work substantially unnoticeable. Subunit E has two constructed, maintained roads crossing the east side of the subunit which diminish the naturalness of the subunit. However, the majority of the subunit was found to be in a natural condition. If one or both of these roads were excluded from the subunit, or allowed to rehabilitate, the naturalness of the subunit would increase.

(3) Does the unit have outstanding opportunities for solitude?

Yes X-A, B and C No E NA _____

Description:

Subunits A, B and C, when considered alone, have little topographic or vegetative screening potential. However, when considered along with the adjacent Spring Basin WSA, each of the three subunits has outstanding opportunities for solitude. Private lands bordering these subunits are managed for solitude as part of the Pine Creek Conservation Area.

Within Subunit E, two roads located in the east portion of the subunit that are used to access private property result in a less than outstanding opportunity for solitude within the subunit because there is no control over the type or amount of motorized use the roads receive. Should the roads be closed, the opportunity for solitude would be expected to increase.

4) Does the unit have outstanding opportunities for primitive and unconfined recreation?

Yes X-A, B and C No E NA _____

Description:

Subunits A, B and C: The Final Intensive Inventory Decisions in November 1980 dropped the lands contained in Subunits A, B, and C from further study stating that "the narrow projections of public land do not offer outstanding opportunities for primitive and unconfined types of recreation". On re-inventory in 2008, the BLM has found that Subunits A, B, and C provide the same outstanding opportunities for primitive and unconfined recreation as the adjacent Spring Basin WSA lands, including outstanding opportunities for hiking, backpacking, big game and upland bird hunting, horseback riding, photography, bird watching, botanic, geologic, and ecologic studies. The three subunits are currently being used by the public for each of the activities listed above. The public travels between the WSA and the three subunits while participating in these recreational activities without noticeable change in BLM's management or their wilderness experience. The expectation of meeting someone in each of the three subunits is

OR-054-017/ Spring Basin WSA Addition Inventory Unit

remote except during big game and upland bird hunting seasons, when recreational use increases. There are no commercial recreation outfitters operating in the area.

Within Subunit E, two roads located in the east portion of the subunit, in combination with three in-holdings located in the center and west portions of the subunit, result in a less than outstanding opportunity for primitive, unconfined recreation within the subunit. This is because there is no control over the type or amount of use the roads receive, and the presence of the in-holdings makes it difficult to navigate the subunit without bumping up against private property. Should the roads be closed or the in-holdings change to BLM ownership, the opportunity for primitive, unconfined recreation would be expected to increase.

(5) Does the unit have supplemental values?

Yes X No NA

Description:

During the original inventory, the adjacent Spring Basin WSA was found to support a rare specie of cacti (Pediocactus Simposonii). It is not known whether this plant occurs in any of the subunits.

OR-054-017/ Spring Basin WSA Addition Inventory Unit

Prepared by:

Team Members: (Names, Titles, Date)

Initial Review Aug. 14, 2007 by: Heidi Mottl (Recreation/Wilderness), Teal Purrington (NEPA/Planning), Dorothy Thomas (GIS), Anna Smith (Hydrology), Mike Tietmeyer (Range), Dan Tippy (Assistant Field Manager), Rick Demmer (Riparian), Monte Kuk (Wildlife), Robert Vidourek (Forestry), Mike Williams (Planning), Berry Phelps (Recreation), Craig Obermiller (Range), John Morris (Fish), Dana Cork (Transportation), Christina M. Welch (Field Manager), Don Tschida (Fire), Gavin Hoban (GIS), John Zancanella (Cultural), JoAnne Armson (Plants).

Realty/Mineral Records researched by Timothy Finger, BLM Wilderness Specialist on detail from Richland, UT, October, 2008.

Approved by:

Christina M. Welch
Field Manager

OCT 31, 2007
Date

This form documents information that constitutes an inventory finding on wilderness characteristics. It does not represent a formal land use allocation or a final agency decision subject to administrative remedies under either 43 CFR parts 4 or 1610.5-2.

OR-054-017/ Spring Basin WSA Addition Inventory Unit

PURPOSE:

This addendum provides signatory authority across gaps in supervisory oversight in the preparation process.

DISCUSSION:

Further study has been conducted to validate the findings approved by the original signator, Christina Welch. As the new Field Manger for the Resource Area and Ms. Welch's replacement I have been briefed by the specialists assigned on the contents and underlying rationale for the findings contained in this document. I approve these findings with my signature below.

APPROVED BY:


SIGNATURE

Thursday, July 08, 2010

John Day Basin RMP Road Analysis Form

(Factors to consider when determining whether a route is a road for wilderness inventory purposes.)

Wilderness Inventory Area Name and Number (UNIT_ID): Spring Basin WSA Addition (OR-054-017)

Route Name and/or Identifier: Melendy Ridge (labeled as "A" on Map 1)

I. LOCATION: Please refer to attached map and BLM corporate data (GIS). Route begins in T 8 S., R 19 E., Section 22, and travels south for approximately 3 miles through portions of Sections 26, 27, 34 and 35 until it exists public land in T 8 S., R 19 E., Section 34.

II. CURRENT PURPOSE OF ROUTE: The route is used for administrative access, primarily for range and fire management purposes.

III. ROAD RIGHT-OF-WAY:

Yes ____ No X Unknown ____

IV. CONSTRUCTION

Yes X No ____

Examples:

Paved ____ Bladed X Graveled ____ Roadside Berms ____
Cut/Fill ____ Other ____

This route was a two-track road prior to the Wagner Mountain wildfire that occurred in 2001. During fire suppression activities, the road was bladed to provided access for fire equipment.

V. IMPROVEMENTS

Yes ____ No X

By Hand Tools ____ By Machine ____

Culverts ____ Stream Crossings ____ Bridges ____ Drainage ____ Barriers ____ Other ____

VI. MAINTENANCE:

OR-054-017/ Spring Basin WSA Addition Inventory Unit

A. Is their Evidence or Documentation of Maintenance using hand tools or machinery?

Yes _____ No X

Hand Tools ___(Y/N)___ Machine ___(Y/N)___

Explain: Is it scheduled route to receive maintenance? No maintenance is planned for this route.

B. If route is in good condition, but there is no evidence of maintenance, would mechanical maintenance with hand tools or machines be approved by BLM in the event this route became impassable?

Yes _____ No X N/A _____

Comments: BLM does not intend to maintain this route.

VII. REGULAR AND CONTINUOUS USE:

Yes X No _____

VIII. CONCLUSION:

To meet the definition of a road, items IV or V, *and* VI-A or B, *and* VII must be checked yes.

Road: Yes _____ No X

Explanation: The route was bladed for purposes of fire suppression in 2001, however the BLM intends to allow it to rehabilitate back to the pre-fire condition which consisted of a two-track route receiving no maintenance. The route was reseeded following the fire and most of the route is barely discernable today.

Evaluator(s): Heidi Mottl Date: 9/30/07

* **road:** An access route which has been **improved and maintained** by **mechanical means** to insure **relatively regular and continuous use**. A way maintained solely by the passage of vehicles does not constitute a road.

a. **“Improved and maintained”** – Actions taken physically by people to keep the road open to vehicle traffic. “Improved” does not necessarily mean formal construction. “Maintained” does not necessarily mean annual maintenance.

b. **“Mechanical means”** – Use of hand or power machinery or tools.

c. **“Relatively regular and continuous use”** – Vehicular use that has occurred and will continue to occur on a relatively regular basis. Examples are: access roads for equipment to maintain a stock water tank or other established water sources; access roads to maintained recreation sites or facilities; or access roads to mining claims.

OR-054-017/ Spring Basin WSA Addition Inventory Unit

John Day Basin RMP Road Analysis Form

(Factors to consider when determining whether a route is a road for wilderness inventory purposes.)

Wilderness Inventory Area Name and Number (UNIT_ID): Spring Basin WSA Addition (OR-054-017)

Route Name and/or Identifier: Rattlesnake Canyon (labeled as "B" on Map 1)

I. LOCATION: Please refer to attached map and BLM corporate data (GIS). Route enters the unit in T 8 S., R 20 E., Section 32 and travels approximately one mile to the west down Rattlesnake Canyon before exiting public land at a private in-holding in Section 31. After crossing the private in-holding and a State parcel for a total of about ¼ mile, the route reenters public land and turns south along the John Day River for approximately ½ mile, where it ends at a large turn-around in T 9 S, R 20 E., Section 6.

II. CURRENT PURPOSE OF ROUTE: From the John Day River east, this route is used by the Confederated Tribes of the Warm Springs-Pine Creek Conservation Area as an access route to connect scattered portions of the Conservation Area. The route connects the route down Rhodes Canyon with Wagner Ranch, located along the John Day River in T 9 S., R 19 E., Section 12. The Rattlesnake Canyon route is used by the BLM for administrative access for river and fire management, and also to access a cottonwood rehabilitation project at the mouth of Rattlesnake Canyon.

III. ROAD RIGHT-OF-WAY:

Yes ____ No X Unknown ____

IV. CONSTRUCTION

Yes X No ____

Examples:

Paved ____ Bladed X Graveled ____ Roadside Berms X
Cut/Fill ____ Other ____

The portion of the route from the John Day River east has been constructed. The portion of the route that runs south along the John Day River is basically a two-track route, created by use.

V. IMPROVEMENTS

Yes X No ____

OR-054-017/ Spring Basin WSA Addition Inventory Unit

By Hand Tools _____ By Machine X

Culverts _____ Stream Crossings _____ Bridges _____ Drainage X Barriers _____ Other _____

The portion of the route from the John Day River east has been improved. The portion of the route that runs south along the John Day River is basically a two-track route, created by use.

VI. MAINTENANCE:

A. Is their Evidence or Documentation of Maintenance using hand tools or machinery?

Yes X No _____

Hand Tools _____ (Y/N) _____ Machine Y (Y/N) _____

The portion of the route from the John Day River east has been maintained. The portion of the route that runs south along the John Day River is basically a two-track route, created by use.

Explain: See BLM FAMS data in reference section. Is it scheduled route to receive maintenance? No.

B. If route is in good condition, but there is no evidence of maintenance, would mechanical maintenance with hand tools or machines be approved by BLM in the event this route became impassable?

Yes X No _____ N/A _____

Comments: BLM would likely continue to approve maintenance on the portion of the route located from the John Day River east, if requested by Pine Creek Conservation Area. The portion of the route that runs south along the John Day River is a two-track route for which maintenance would likely not be approved.

VII. REGULAR AND CONTINUOUS USE:

Yes X No _____

VIII. CONCLUSION:

To meet the definition of a road, items IV or V, *and* VI-A or B, *and* VII must be checked yes.

Road: Yes X No _____

Explanation: This route is part of an important access route for Pine Creek Conservation Area and BLM is likely to continue to allow its use and maintenance as long as needed by the Conservation Area.

Evaluator(s): Heidi Mottl Date: 9/30/2007

OR-054-017/ Spring Basin WSA Addition Inventory Unit

* **road:** An access route which has been **improved and maintained by mechanical means** to insure **relatively regular and continuous use**. A way maintained solely by the passage of vehicles does not constitute a road.

a. **“Improved and maintained”** – Actions taken physically by people to keep the road open to vehicle traffic. “Improved” does not necessarily mean formal construction. “Maintained” does not necessarily mean annual maintenance.

b. **“Mechanical means”** – Use of hand or power machinery or tools.

c. **“Relatively regular and continuous use”** – Vehicular use that has occurred and will continue to occur on a relatively regular basis. Examples are: access roads for equipment to maintain a stock water tank or other established water sources; access roads to maintained recreation sites or facilities; or access roads to mining claims.

John Day Basin RMP Road Analysis Form

(Factors to consider when determining whether a route is a road for wilderness inventory purposes.)

Wilderness Inventory Area Name and Number (UNIT_ID): Spring Basin WSA Addition (OR-054-017)

Route Name and/or Identifier: Frickey Canyon (labeled as "C" on Map 1)

I. LOCATION: Please refer to attached map and BLM corporate data (GIS). Route begins in T 9 S., R 20 E., Section 5, where it enters the unit. The route travels southwest along Frickey Canyon for about one mile where it dead ends on top of a point in Section 8.

II. CURRENT PURPOSE OF ROUTE: None. The access to this route is no longer available due to a wash-out of the Amine Canyon Route (See Road Analysis Form for "D"). You can no longer get to this route.

III. ROAD RIGHT-OF-WAY:

Yes ____ No X Unknown ____

IV. CONSTRUCTION

Yes ____ No X

Examples:

Paved ____ Bladed ____ Graveled ____ Roadside Berms ____
Cut/Fill ____ Other ____

This is a two-track route created by use.

V. IMPROVEMENTS

Yes ____ No X

By Hand Tools ____ By Machine ____

Culverts ____ Stream Crossings ____ Bridges ____ Drainage ____ Barriers ____ Other ____

VI. MAINTENANCE:

A. Is there Evidence or Documentation of Maintenance using hand tools or machinery?

OR-054-017/ Spring Basin WSA Addition Inventory Unit

Yes _____ No X

Hand Tools ___(Y/N) _____ Machine ___(Y/N) _____

Explain: See BLM FAMS data in reference section. Is it scheduled route to receive maintenance? No.

B. If route is in good condition, but there is no evidence of maintenance, would mechanical maintenance with hand tools or machines be approved by BLM in the event this route became impassable?

Yes _____ No X N/A _____

Comments: _____

VII. REGULAR AND CONTINUOUS USE:

Yes _____ No X

VIII. CONCLUSION:

To meet the definition of a road, items IV or V, *and* VI-A or B, *and* VII must be checked yes.

Road: Yes _____ No X

Explanation: This is a two-track route that can no longer be accessed due to the wash-out of the Amine Canyon route.

Evaluator(s): Heidi Mottl Date: 9/30/07

* **road:** An access route which has been **improved and maintained by mechanical means** to insure **relatively regular and continuous use**. A way maintained solely by the passage of vehicles does not constitute a road.

a. **“Improved and maintained”** – Actions taken physically by people to keep the road open to vehicle traffic. “Improved” does not necessarily mean formal construction. “Maintained” does not necessarily mean annual maintenance.

b. **“Mechanical means”** – Use of hand or power machinery or tools.

c. **“Relatively regular and continuous use”** – Vehicular use that has occurred and will continue to occur on a relatively regular basis. Examples are: access roads for equipment to maintain a stock water tank or other established water sources; access roads to maintained recreation sites or facilities; or access roads to mining claims.

John Day Basin RMP Road Analysis Form

(Factors to consider when determining whether a route is a road for wilderness inventory purposes.)

Wilderness Inventory Area Name and Number (UNIT_ID): Spring Basin WSA Addition (OR-054-017)

Route Name and/or Identifier: Amine Canyon (labeled as "D" on Map 1)

I. LOCATION: Please refer to attached map and BLM corporate data (GIS). Route begins in T 9 S., R 20 E., Section 9 where it enters the unit. The route travels one mile through Section 9 from north to south, exiting public lands as it enters Section 16.

II. CURRENT PURPOSE OF ROUTE: None. The route is washed-out to the point of being impassable.

III. ROAD RIGHT-OF-WAY:

Yes _____ No X Unknown _____

IV. CONSTRUCTION

Yes X No _____

Examples:

Paved _____ Bladed X Graveled _____ Roadside Berms X
Cut/Fill _____ Other _____

V. IMPROVEMENTS

Yes _____ No _____ Unknown X

By Hand Tools _____ By Machine _____

Culverts _____ Stream Crossings _____ Bridges _____ Drainage _____ Barriers _____ Other _____

VI. MAINTENANCE:

A. Is there Evidence or Documentation of Maintenance using hand tools or machinery?

Yes X No _____

OR-054-017/ Spring Basin WSA Addition Inventory Unit

Hand Tools ____ (Y/N) ____ Machine Y (Y/N) ____

Explain: See BLM FAMS data in reference section. Is it scheduled route to receive maintenance? No.

B. If route is in good condition, but there is no evidence of maintenance, would mechanical maintenance with hand tools or machines be approved by BLM in the event this route became impassable?

Yes ____ No X N/A ____

Comments: This route is currently washed-out and impassable. An alternate route is available across private property in Rattlesnake Canyon. The BLM does not plan to approve maintenance of this route.

VII. REGULAR AND CONTINUOUS USE:

Yes X No ____

This route was regularly used until about 2006 when it washed out and became impassable.

VIII. CONCLUSION:

To meet the definition of a road, items IV or V, *and* VI-A or B, *and* VII must be checked yes.

Road: Yes ____ No X

Explanation: This route is washed out and impassable. No maintenance is planned, as the Rattlesnake Canyon route serves as an alternate route.

Evaluator(s): Heidi Mottl Date: 9/30/07

* **road:** An access route which has been **improved and maintained by mechanical means** to insure **relatively regular and continuous use**. A way maintained solely by the passage of vehicles does not constitute a road.

a. **“Improved and maintained”** – Actions taken physically by people to keep the road open to vehicle traffic. “Improved” does not necessarily mean formal construction. “Maintained” does not necessarily mean annual maintenance.

b. **“Mechanical means”** – Use of hand or power machinery or tools.

c. **“Relatively regular and continuous use”** – Vehicular use that has occurred and will continue to occur on a relatively regular basis. Examples are: access roads for equipment to maintain a stock water tank or other established water sources; access roads to maintained recreation sites or facilities; or access roads to mining claims.

John Day Basin RMP Road Analysis Form

(Factors to consider when determining whether a route is a road for wilderness inventory purposes.)

Wilderness Inventory Area Name and Number (UNIT_ID): Spring Basin WSA Addition (OR-054-017)

Route Name and/or Identifier: May Basin (labeled as "E" on Map 1)

I. LOCATION: Please refer to attached map and BLM corporate data (GIS). Route begins within the unit in T 9 S., R 20 E., Section 9 where it branches off of the Amine Canyon Route (labeled as "D" on Map 1). The route travels southeast for approximately ¾ mile before it exits BLM land in Section 16.

II. CURRENT PURPOSE OF ROUTE: None. The access to this route is no longer available due to a wash-out of the Amine Canyon Route (See Road Analysis Form for "D"). You can no longer get to this route.

III. ROAD RIGHT-OF-WAY:

Yes ____ No X Unknown ____

IV. CONSTRUCTION

Yes _____ No X _____

Examples:

Paved _____ Bladed _____ Graveled _____ Roadside Berms _____

Cut/Fill _____ Other _____

V. IMPROVEMENTS

Yes _____ No X _____

By Hand Tools _____ By Machine _____

Culverts _____ Stream Crossings _____ Bridges _____ Drainage _____ Barriers _____ Other _____

VI. MAINTENANCE:

A. Is their Evidence or Documentation of Maintenance using hand tools or machinery?

OR-054-017/ Spring Basin WSA Addition Inventory Unit

Yes _____ No X _____

Hand Tools (Y/N) Machine (Y/N)

Explain: See BLM FAMS data in reference section. Is it scheduled route to receive maintenance? No.

B. If route is in good condition, but there is no evidence of maintenance, would mechanical maintenance with hand tools or machines be approved by BLM in the event this route became impassable?

Yes _____ No X N/A _____

Comments: _____

VII. REGULAR AND CONTINUOUS USE:

Yes _____ No X _____

VIII. CONCLUSION:

To meet the definition of a road, items IV or V, *and* VI-A or B, *and* VII must be checked yes.

Road: Yes _____ No X _____

Explanation: This is a two-track route that can no longer be accessed due to the wash-out of the Amine Canyon route.

Evaluator(s): Heidi Mottl Date: 9/30/07

* **road:** An access route which has been **improved and maintained by mechanical means** to insure **relatively regular and continuous use**. A way maintained solely by the passage of vehicles does not constitute a road.

a. **“Improved and maintained”** – Actions taken physically by people to keep the road open to vehicle traffic. “Improved” does not necessarily mean formal construction. “Maintained” does not necessarily mean annual maintenance.

b. **“Mechanical means”** – Use of hand or power machinery or tools.

c. **“Relatively regular and continuous use”** – Vehicular use that has occurred and will continue to occur on a relatively regular basis. Examples are: access roads for equipment to maintain a stock water tank or other established water sources; access roads to maintained recreation sites or facilities; or access roads to mining claims.

REFERENCES

1. **Realty program**

- a. Master Title Plats
 - T 8 S., R 19 E. and R 20 E.
 - T 9 S., R 19 E. and R 20 E.
- b. Case Files OR 44703, OR 34235, OR 24421, OR 58271
- c. Executive Order (07/2/1910)
- d. BLM LR 2000 data base.

2. **Mineral Program**

Public Law 167 (July 23, 1955). Restriction of use of Unpatented Mining Claims.
43 CFR 3710
BLM Oil and Gas Leases – All are Closed.

3. **GIS Program**

USGS National Map project
BLM GIS data
BLM Lower John Day River public lands map, June 1991
Google Earth Commercial Mapping System

The BLM has identified the following man-made features:

Subunit A:

Power line ROWs OR 44703, OR 34235, and OR 24421 form the southwest boundary of the subunit, but area located outside of the subunit.

There is an Executive Order (07/12/1910) establishing a 40 acre portion of the subunit as a potential power site reserve.

The lands have been leased for potential Oil and Gas development.

Subunit B:

The lands have been leased for potential Oil and Gas development

Subunit C:

The lands have been leased for potential Oil and Gas development

Subunit D:

Powerline ROW OR 34235, ROW OR 24421, Road ROW OR 58271

There is an Executive Order (07/12/1910) establishing several portions of the subunit as potential power site reserves.

A portion of the lands have been leased for potential oil and gas development (12/11/2003).

There is an application for a land exchange in Section 21 (OR 49206) dating to 4/18/1995.

Subunit E:

A portion of the northern boundary follows the Road ROW OR 58271.

Portions of the subunit have been leased for potential oil and gas development (12/11/2003).

There is an Executive Order (07/12/1910) establishing several portions of the subunit as potential power site reserves.

OR-054-017/ Spring Basin WSA Addition Inventory Unit

Team Comments for Subunit D (Big Muddy) - 8/14/07:

Welch- A road network bisects it.

Tschida- A road was bladed during Wagner Mountain fire.

Kuk- Is there chain saw work?

Tschida – There is no chainsaw work, just prescribed burn. It still has natural character, other than blading it for fire.

Kuk- There is spring development.

Mottl- Lyle says this has wilderness potential.

Tippy- Especially if this area is blocked up in the future.

Team Comments for Subunit E (Amine Canyon) - 8/14/07:

Welch-It is very checker-boarded with private land.

Tschida-There are multiple travel routes to access private in-holdings.

Phelps- In the original inventory road was highly maintained.

Tschida- Warm Springs and Pine Creek Ranch re-bladed the road up Rhodes Canyon all the way out a long ways across the landscape to prevent this year's fire from spreading. Also, the upper road was bladed during Rattlesnake Burn.

Mottl- Just a one-time maintenance for a fire doesn't qualify it as a road

Kuk- Adjacent private ranch is being managed for fish and wildlife and naturalness.

Kuk-Are there any pieces that we could add with their piece?

Tippy-Those are private lands, but could still be managed compatibly.

STATUS OF PUBLIC DOMAIN
LAND AND MINERAL TITLES

PRINEVILLE DISTRICT

WASCO COUNTY WHEELER COUNTY

0806150AC

MT/USE PLAT

[illegible]

FOR ORDERS AFFECTING DISPOSAL OR USE OF
UNREGISTERED LANDS WITH PROPERTY FOR CLASSIFICATION
UNIDENTICAL, WATER AND/OR OTHER PUBLIC PURPOSES,
REFER TO NOTICE OF MISCELLANEOUS DOCUMENTS

OR 4377 SD 01 01 Mail Use All unregistered public land
Sees 3-15/17/18/20-27/30,32,34,35

BLM WSA 12/30/1982 Seqr from Min Ltc & Per
Sees 3-10/15-25

OR 35342 R/W Trans Line
Sees 26, Let 6

OR 44721 Wd BLM John Day Wild & Scenic
River 10/25/1988
Sees 3,4,5,9,10/16/18,22,23,25,26,35,36 4088

[illegible]

[The following text is extremely faint and largely illegible due to low contrast and blurring. It appears to be a list or index of items, possibly related to the "List of Figures" mentioned in the caption above.]

LBL REF: 040100000101
 AUTMAP2000/CTX RPT+WC40 E.O.
 CONVERT.PEC: 04/27/2001 BY: H. USCH
 LAST UPDATE: 04/06/2006 BY: D. LEAVENWORTH
 POSTED TO PUBLIC RECORDS: 05/16/2006
 SURVEYED TOWNSHIP
 SURVEYED COORDINATE SOURCE

GC08 N40 03	CURRENT TO:	N/A	SCANNED ORIGINAL MTP
IMAGE SOURCE:		N/A	
PROJECTION:		N/A	
COORDINATE ELEVATION:		N/A	
COURSE FOR METER 0.000000		N/A	

SOURCE FOR ARTICLES & BOOKS. N/A
 NOTES.

USE PLAY: Lobi Min

This plot is the Bureau's Record of Tolls, and should be used mainly as a graphical display of the monthly survey data. Records are shown in red ink, and the tolls are shown in black ink. The tolls are not reflected in the amounts which may have been estimated by local respondents or clerks at other levels of the system. Below is the national survey for official survey.

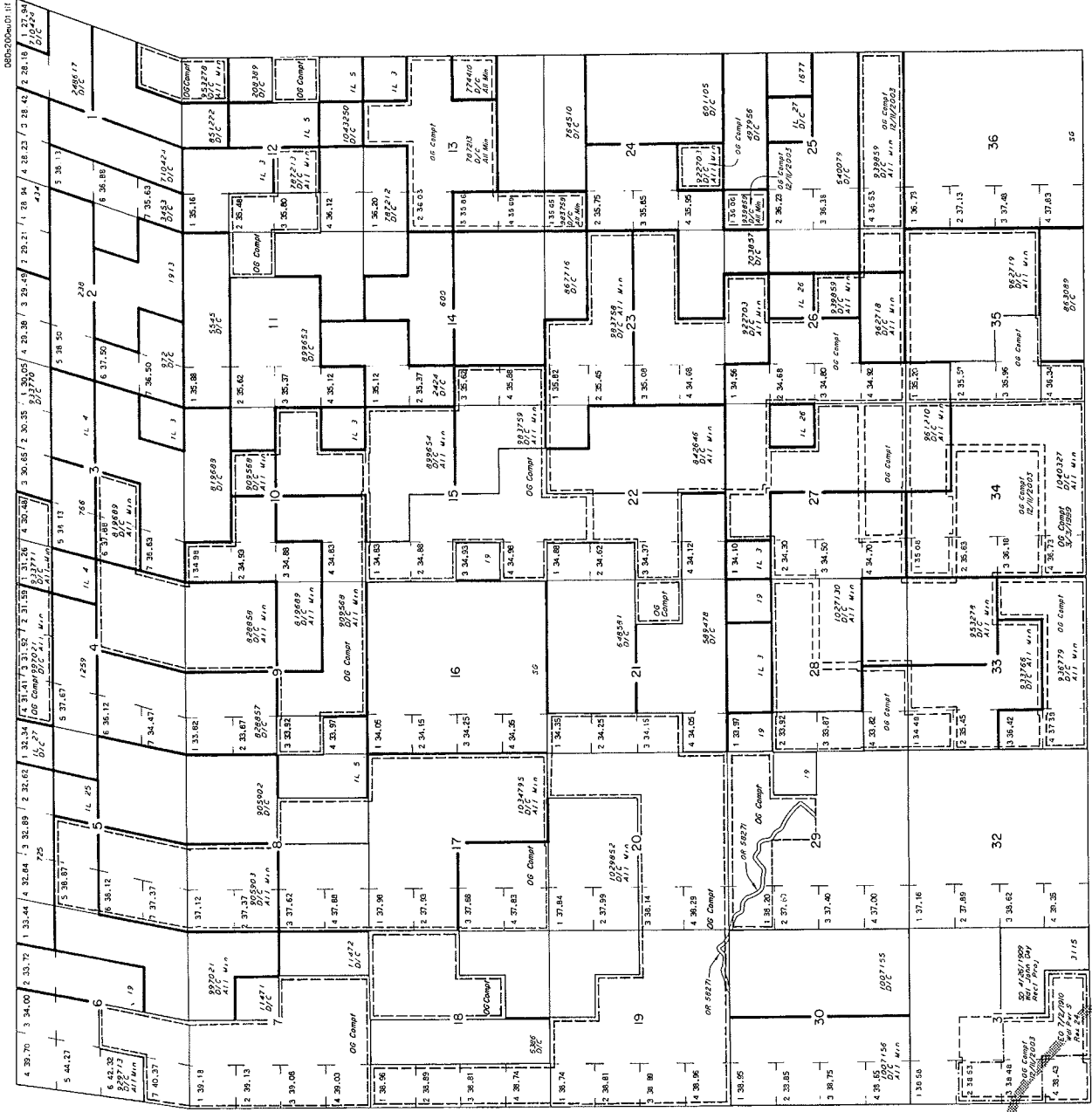
SCALE in Chords	30	40
	2640	
SCALE in Feet		

SCALE in Chains	30	40
		2640
SCALE in Feet		

TOWNSHIP 8 SOUTH RANGE 20 EAST OF THE WILLAMETTE MERIDIAN, OREGON
PRINEVILLE DISTRICT

STATUS OF PUBLIC DOMAIN
LAND AND MINERAL TITLES

MT/USE PLAT



INDEX TO SEGREGATED TRACTS		
TRACT NO.	T.	R.
1	8	20
2	8	20
3	8	20
4	8	20
5	8	20
6	8	20
7	8	20
8	8	20
9	8	20
10	8	20
11	8	20
12	8	20
13	8	20
14	8	20
15	8	20
16	8	20
17	8	20
18	8	20
19	8	20
20	8	20
21	8	20
22	8	20
23	8	20
24	8	20
25	8	20
26	8	20
27	8	20
28	8	20
29	8	20
30	8	20
31	8	20
32	8	20
33	8	20
34	8	20
35	8	20
36	8	20

FOR ORDERS AFFECTING DISPOSAL OR USE OF
UNDEVELOPED LANDS WITHIN TOWNSHIP 8 SOUTH,
RANGE 20 EAST, OF THE WILLAMETTE MERIDIAN,
PRINEVILLE DISTRICT, REFER TO INDEX OF MISCELLANEOUS DOCUMENTS.

OR 4377 SD, O. C. Multi Use
All unappropriated Public Land
Sec 26, 27, 28, 29, 30, 31, 32, 33, 34, 35, 36, 37, 38, 39, 40, 41, 42, 43, 44, 45, 46, 47, 48, 49, 50, 51, 52, 53, 54, 55, 56, 57, 58, 59, 60, 61, 62, 63, 64, 65, 66, 67, 68, 69, 70, 71, 72, 73, 74, 75, 76, 77, 78, 79, 80, 81, 82, 83, 84, 85, 86, 87, 88, 89, 90, 91, 92, 93, 94, 95, 96, 97, 98, 99, 100, 101, 102, 103, 104, 105, 106, 107, 108, 109, 110, 111, 112, 113, 114, 115, 116, 117, 118, 119, 120, 121, 122, 123, 124, 125, 126, 127, 128, 129, 130, 131, 132, 133, 134, 135, 136, 137, 138, 139, 140, 141, 142, 143, 144, 145, 146, 147, 148, 149, 150, 151, 152, 153, 154, 155, 156, 157, 158, 159, 160, 161, 162, 163, 164, 165, 166, 167, 168, 169, 170, 171, 172, 173, 174, 175, 176, 177, 178, 179, 180, 181, 182, 183, 184, 185, 186, 187, 188, 189, 190, 191, 192, 193, 194, 195, 196, 197, 198, 199, 200, 201, 202, 203, 204, 205, 206, 207, 208, 209, 210, 211, 212, 213, 214, 215, 216, 217, 218, 219, 220, 221, 222, 223, 224, 225, 226, 227, 228, 229, 230, 231, 232, 233, 234, 235, 236, 237, 238, 239, 240, 241, 242, 243, 244, 245, 246, 247, 248, 249, 250, 251, 252, 253, 254, 255, 256, 257, 258, 259, 260, 261, 262, 263, 264, 265, 266, 267, 268, 269, 270, 271, 272, 273, 274, 275, 276, 277, 278, 279, 280, 281, 282, 283, 284, 285, 286, 287, 288, 289, 290, 291, 292, 293, 294, 295, 296, 297, 298, 299, 300, 301, 302, 303, 304, 305, 306, 307, 308, 309, 310, 311, 312, 313, 314, 315, 316, 317, 318, 319, 320, 321, 322, 323, 324, 325, 326, 327, 328, 329, 330, 331, 332, 333, 334, 335, 336, 337, 338, 339, 340, 341, 342, 343, 344, 345, 346, 347, 348, 349, 350, 351, 352, 353, 354, 355, 356, 357, 358, 359, 360, 361, 362, 363, 364, 365, 366, 367, 368, 369, 370, 371, 372, 373, 374, 375, 376, 377, 378, 379, 380, 381, 382, 383, 384, 385, 386, 387, 388, 389, 390, 391, 392, 393, 394, 395, 396, 397, 398, 399, 400, 401, 402, 403, 404, 405, 406, 407, 408, 409, 410, 411, 412, 413, 414, 415, 416, 417, 418, 419, 420, 421, 422, 423, 424, 425, 426, 427, 428, 429, 430, 431, 432, 433, 434, 435, 436, 437, 438, 439, 440, 441, 442, 443, 444, 445, 446, 447, 448, 449, 450, 451, 452, 453, 454, 455, 456, 457, 458, 459, 460, 461, 462, 463, 464, 465, 466, 467, 468, 469, 470, 471, 472, 473, 474, 475, 476, 477, 478, 479, 480, 481, 482, 483, 484, 485, 486, 487, 488, 489, 490, 491, 492, 493, 494, 495, 496, 497, 498, 499, 500, 501, 502, 503, 504, 505, 506, 507, 508, 509, 510, 511, 512, 513, 514, 515, 516, 517, 518, 519, 520, 521, 522, 523, 524, 525, 526, 527, 528, 529, 530, 531, 532, 533, 534, 535, 536, 537, 538, 539, 540, 541, 542, 543, 544, 545, 546, 547, 548, 549, 550, 551, 552, 553, 554, 555, 556, 557, 558, 559, 560, 561, 562, 563, 564, 565, 566, 567, 568, 569, 570, 571, 572, 573, 574, 575, 576, 577, 578, 579, 580, 581, 582, 583, 584, 585, 586, 587, 588, 589, 590, 591, 592, 593, 594, 595, 596, 597, 598, 599, 600, 601, 602, 603, 604, 605, 606, 607, 608, 609, 610, 611, 612, 613, 614, 615, 616, 617, 618, 619, 620, 621, 622, 623, 624, 625, 626, 627, 628, 629, 630, 631, 632, 633, 634, 635, 636, 637, 638, 639, 640, 641, 642, 643, 644, 645, 646, 647, 648, 649, 650, 651, 652, 653, 654, 655, 656, 657, 658, 659, 660, 661, 662, 663, 664, 665, 666, 667, 668, 669, 670, 671, 672, 673, 674, 675, 676, 677, 678, 679, 680, 681, 682, 683, 684, 685, 686, 687, 688, 689, 690, 691, 692, 693, 694, 695, 696, 697, 698, 699, 700, 701, 702, 703, 704, 705, 706, 707, 708, 709, 710, 711, 712, 713, 714, 715, 716, 717, 718, 719, 720, 721, 722, 723, 724, 725, 726, 727, 728, 729, 730, 731, 732, 733, 734, 735, 736, 737, 738, 739, 740, 741, 742, 743, 744, 745, 746, 747, 748, 749, 750, 751, 752, 753, 754, 755, 756, 757, 758, 759, 760, 761, 762, 763, 764, 765, 766, 767, 768, 769, 770, 771, 772, 773, 774, 775, 776, 777, 778, 779, 780, 781, 782, 783, 784, 785, 786, 787, 788, 789, 790, 791, 792, 793, 794, 795, 796, 797, 798, 799, 800, 801, 802, 803, 804, 805, 806, 807, 808, 809, 810, 811, 812, 813, 814, 815, 816, 817, 818, 819, 820, 821, 822, 823, 824, 825, 826, 827, 828, 829, 830, 831, 832, 833, 834, 835, 836, 837, 838, 839, 840, 841, 842, 843, 844, 845, 846, 847, 848, 849, 850, 851, 852, 853, 854, 855, 856, 857, 858, 859, 860, 861, 862, 863, 864, 865, 866, 867, 868, 869, 870, 871, 872, 873, 874, 875, 876, 877, 878, 879, 880, 881, 882, 883, 884, 885, 886, 887, 888, 889, 890, 891, 892, 893, 894, 895, 896, 897, 898, 899, 900, 901, 902, 903, 904, 905, 906, 907, 908, 909, 910, 911, 912, 913, 914, 915, 916, 917, 918, 919, 920, 921, 922, 923, 924, 925, 926, 927, 928, 929, 930, 931, 932, 933, 934, 935, 936, 937, 938, 939, 940, 941, 942, 943, 944, 945, 946, 947, 948, 949, 950, 951, 952, 953, 954, 955, 956, 957, 958, 959, 960, 961, 962, 963, 964, 965, 966, 967, 968, 969, 970, 971, 972, 973, 974, 975, 976, 977, 978, 979, 980, 981, 982, 983, 984, 985, 986, 987, 988, 989, 990, 991, 992, 993, 994, 995, 996, 997, 998, 999, 1000.

FILE REF	080200001H	AMHARPOD/RTK Ref:CAD 0.0
CONVERT .JPG	04/20/2001	BY H. GUSCH
LAST UPDATE	12/09/2004	BY D. LEAVENWORTH
POSTED TO PUBLIC RECORDS	12/16/2004	
SURVEYED TOWNSHIP		
SURVEYED COORDINATE SOURCE		N/A
IMAGE SOURCE		N/A
PROJECTION		N/A
UNIT OF MEASUREMENT		N/A
SOURCE FOR METES & BOUNDS		N/A
NOTES		

WARNING STATEMENT
THIS PLAT IS A PUBLIC RECORD AND IS NOT A WARRANTY OF TITLE. IT IS THE RESPONSIBILITY OF THE PURCHASER TO VERIFY THE ACCURACY OF THE INFORMATION CONTAINED HEREIN. THE PLAT IS NOT A WARRANTY OF TITLE AND DOES NOT GUARANTEE THE ACCURACY OF THE INFORMATION CONTAINED HEREIN.

SCALE IN FEET
0 100 200 300 400 500 600 700 800 900 1000

WASCO COUNTY
WHEELER COUNTY

T 8 S
R 20 E

STATUS OF PUBLIC DOMAIN
LAND AND MINERAL TITLES

MT/USE PLAT

[illegible]

FOR ORDERS AFFECTING DISPOSAL OR USE OF
UNIDENTIFIED LANDS WITHDRAWN FOR CLASSIFICATION
MINERAL, WATER AND/OR OTHER PUBLIC PURPOSES;
REFER TO INDEX OF MISCELLANEOUS DOCUMENTS

OR 4377 SD 0 Cl Mull Use all unapprp public land
 Secs: 14,6,8,10,12,14,18,20,22,24,26,30,31,34

OR 35958 R/W Trans Line
S - B. NIELSEN

Sec 20 NE 1/4 SW 1/4

River 10/28/1988
Secs: 1,11,12,13,14,24,25, MGB

1
2
3
4
5
6
7
8
9
10
11
12
13
14
15
16
17
18
19
20
21
22
23
24
25
26
27
28
29
30
31
32
33
34
35
36
37
38
39
40
41
42
43
44
45
46
47
48
49
50
51
52
53
54
55
56
57
58
59
60
61
62
63
64
65
66
67
68
69
70
71
72
73
74
75
76
77
78
79
80
81
82
83
84
85
86
87
88
89
90
91
92
93
94
95
96
97
98
99
100
101
102
103
104
105
106
107
108
109
110
111
112
113
114
115
116
117
118
119
120
121
122
123
124
125
126
127
128
129
130
131
132
133
134
135
136
137
138
139
140
141
142
143
144
145
146
147
148
149
150
151
152
153
154
155
156
157
158
159
160
161
162
163
164
165
166
167
168
169
170
171
172
173
174
175
176
177
178
179
180
181
182
183
184
185
186
187
188
189
190
191
192
193
194
195
196
197
198
199
200
201
202
203
204
205
206
207
208
209
210
211
212
213
214
215
216
217
218
219
220
221
222
223
224
225
226
227
228
229
230
231
232
233
234
235
236
237
238
239
240
241
242
243
244
245
246
247
248
249
250
251
252
253
254
255
256
257
258
259
260
261
262
263
264
265
266
267
268
269
270
271
272
273
274
275
276
277
278
279
280
281
282
283
284
285
286
287
288
289
290
291
292
293
294
295
296
297
298
299
300
301
302
303
304
305
306
307
308
309
310
311
312
313
314
315
316
317
318
319
320
321
322
323
324
325
326
327
328
329
330
331
332
333
334
335
336
337
338
339
340
341
342
343
344
345
346
347
348
349
350
351
352
353
354
355
356
357
358
359
360
361
362
363
364
365
366
367
368
369
370
371
372
373
374
375
376
377
378
379
380
381
382
383
384
385
386
387
388
389
390
391
392
393
394
395
396
397
398
399
400
401
402
403
404
405
406
407
408
409
410
411
412
413
414
415
416
417
418
419
420
421
422
423
424
425
426
427
428
429
430
431
432
433
434
435
436
437
438
439
440
441
442
443
444
445
446
447
448
449
450
451
452
453
454
455
456
457
458
459
460
461
462
463
464
465
466
467
468
469
470
471
472
473
474
475
476
477
478
479
480
481
482
483
484
485
486
487
488
489
490
491
492
493
494
495
496
497
498
499
500
501
502
503
504
505
506
507
508
509
510
511
512
513
514
515
516
517
518
519
520
521
522
523
524
525
526
527
528
529
530
531
532
533
534
535
536
537
538
539
540
541
542
543
544
545
546
547
548
549
550
551
552
553
554
555
556
557
558
559
560
561
562
563
564
565
566
567
568
569
570
571
572
573
574
575
576
577
578
579
580
581
582
583
584
585
586
587
588
589
590
591
592
593
594
595
596
597
598
599
600
601
602
603
604
605
606
607
608
609
610
611
612
613
614
615
616
617
618
619
620
621
622
623
624
625
626
627
628
629
630
631
632
633
634
635
636
637
638
639
640
641
642
643
644
645
646
647
648
649
650
651
652
653
654
655
656
657
658
659
660
661
662
663
664
665
666
667
668
669
670
671
672
673
674
675
676
677
678
679
680
681
682
683
684
685
686
687
688
689
690
691
692
693
694
695
696
697
698
699
700
701
702
703
704
705
706
707
708
709
710
711
712
713
714
715
716
717
718
719
720
721
722
723
724
725
726
727
728
729
730
731
732
733
734
735
736
737
738
739
740
741
742
743
744
745
746
747
748
749
750
751
752
753
754
755
756
757
758
759
760
761
762
763
764
765
766
767
768
769
770
771
772
773
774
775
776
777
778
779
780
781
782
783
784
785
786
787
788
789
790
791
792
793
794
795
796
797
798
799
800
801
802
803
804
805
806
807
808
809
810
811
812
813
814
815
816
817
818
819
820
821
822
823
824
825
826
827
828
829
830
831
832
833
834
835
836
837
838
839
840
84

[illegible][illegible]

1000

[illegible]

1011119, <https://doi.org/10.1002/9781119999781.ch1011119>

Abstract

doi:10.1002/ajb.1350100010

[illegible]

FILE REF	090819000111	AutMAP2000/CTX RasterCAD 6.0
CONVERT JPEG	10/24/2000	BY H GISCH

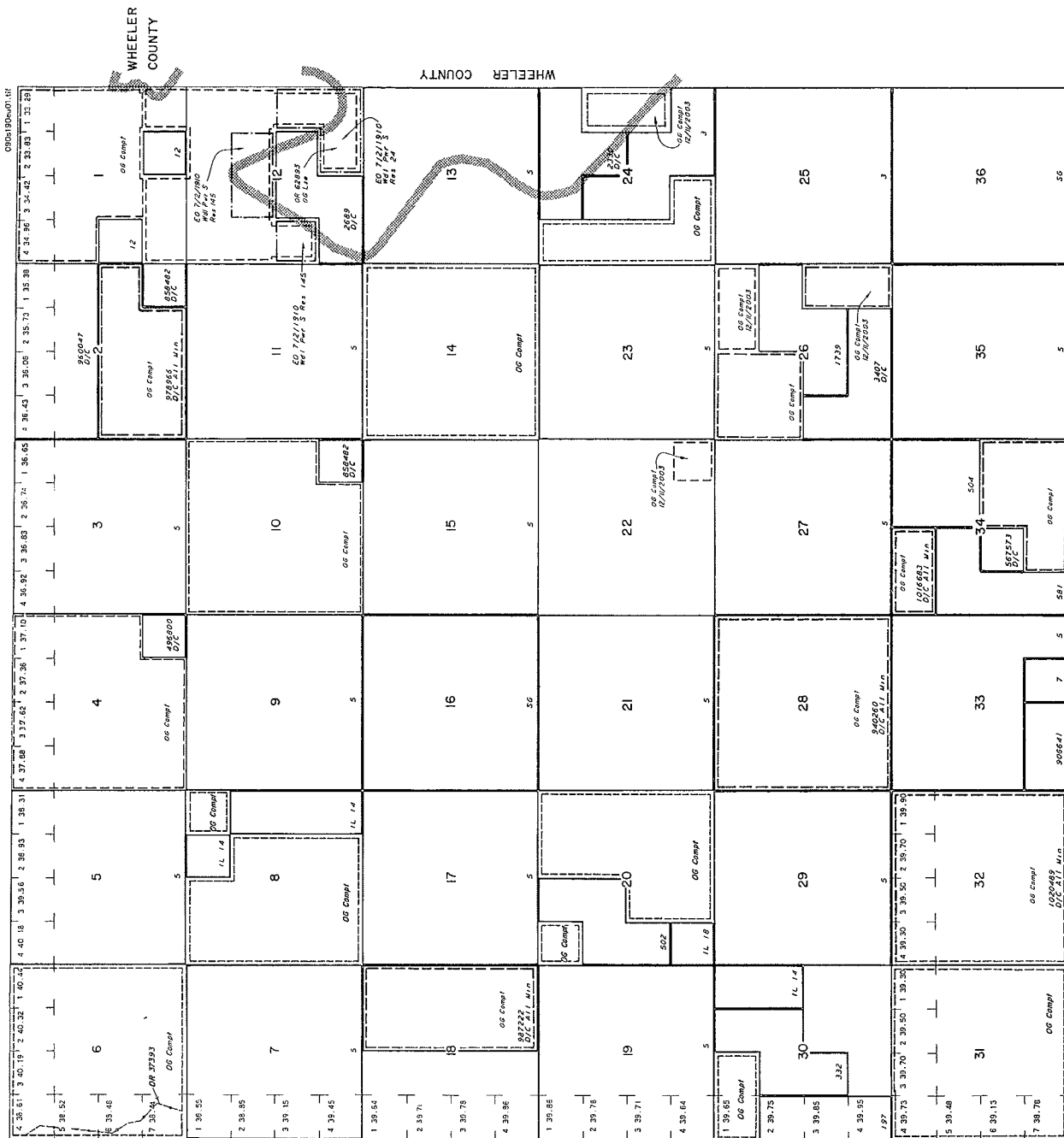
POSTED TO PUBLIC RECORDS 12/13/2005

SURVEYED COORDINATE SOURCE
6CDB NAD 83 CURRENT TO
IMAGE SOURCE
N/A
SCANNED ORIGINAL MTP

COORDINATE ELEVATION	N/A	SCANNED ORIGINAL MTP
SOURCE FOR METES & BOUNDS		

USE PLAY LIB! Min

Journal of Management Education 36(7) 809-824



WARNING STATEMENT

This plot is the Bureau's Record at TIDM, and should be used only as a guide in the display of the Treasury survey data. Records are not to be used as evidence in any legal proceeding. The data are not to be used for any other purpose without the express written consent of the Bureau. The data are not to be used for any other purpose without the express written consent of the Bureau. The data are not to be used for any other purpose without the express written consent of the Bureau.

**DEPARTMENT OF THE INTERIOR
BUREAU OF LAND MANAGEMENT
CASE RECORDATION
(MASS) Serial Register Page**

Run Time 06:48 PM

Page 3 of 4

Run Date: 06/06/10

01 10-21-1976;090STAT2776;43USC1761
Case Type 286203: ROW-TEL & TELEG,FLPMA
Commodity 971: NON-ENERGY FACILITIES
Case Disposition: AUTHORIZED

Total Acres
0.023

Serial Number
OROR-- - 044703

Serial Number: OROR-- - 044703

Name & Address	Int Rel	% Interest
CENTURYTEL OF EASTERN OREGO 890 SOUTH SECOND	LEBANON OR 97355	HOLDER/BILLEE 100.000000000
TELEPHONE UT OF E OR PO BOX 337	LEBANON OR 97533	PREVIOUS INT PARTY 0.000000000

Serial Number: OROR-- - 044703

Mer Twp	Rng	Sec	SType	SNr Suff	Subdivision	District/Resource Area	County	Mgmt Agency
33	0070S	0190E 028	ALIQ		NWSW;	PRINEVILLE CENTRAL ORE	WHEELER	BUREAU OF LAND MGMT
33	0070S	0190E 033	ALIQ		SWNW;	PRINEVILLE CENTRAL ORE	WHEELER	BUREAU OF LAND MGMT
33	0080S	0190E 003	ALIQ		SENW,NESW;	PRINEVILLE CENTRAL ORE	WHEELER	BUREAU OF LAND MGMT
33	0080S	0190E 003	LOTS		3;	PRINEVILLE CENTRAL ORE	WHEELER	BUREAU OF LAND MGMT
33	0080S	0210E 005	LOTS		1;	PRINEVILLE CENTRAL ORE	WHEELER	BUREAU OF LAND MGMT

Serial Number: OROR-- - 044703

Act Date	Code	Action	Action Remark	Pending Office
01/13/1989	124	APLN RECD		
01/13/1989	971	COST RECOV (PROC) RECD	\$125.00;	
01/14/1989	065	COST RECOV (MON) RECD	\$50.00;	
04/20/1989	307	ROW GRANTED-ISSUED		
04/20/1989	503	LENGTH IN MILES	1.25;	
04/20/1989	504	WIDTH IN FEET (TOTAL)	20.0;	
06/28/1989	974	AUTOMATED RECORD VERIF	PW	
12/04/1990	304	AUTH AMENDED/MODIFIED		
04/20/1994	853	COMPL/REVIEW DUE DATE		
11/30/1997	140	ASGN FILED	TEL UTIL TO CENTUY	
12/01/1997	139	ASGN APPROVED		
04/19/2009	763	EXPIRES		

Serial Number: OROR-- - 044703

Line Nr	Remarks
0001	BURIED TELEPHONE CABLE
0002	AMENDED TO DELETE EXHIBIT "A" SHEET 1 OF 4 OF GRANT

**DEPARTMENT OF THE INTERIOR
BUREAU OF LAND MANAGEMENT
CASE RECORDATION
(MASS) Serial Register Page**

Run Time 07:06 PM

Page 1 of 1

Run Date: 06/06/10

01 10-21-1976;090STAT2776;43USC1761

**Total Acres
8.882**

**Serial Number
OROR-- - 034235**

**Case Type 285003: ROW-POWER TRAN-FLPMA
Commodity 970: OTHER ENERGY FACILITIES
Case Disposition: AUTHORIZED**

Serial Number: OROR-- - 034235

Name & Address	Int Rel	% Interest
WASCO ELEC COOP INC PO BOX 537 THE DALLES OR 97058	HOLDER	100.00000000

Serial Number: OROR-- - 034235

Mer Twp Rng Sec	STyp	SNr Suff	Subdivision	District/Resource Area	County	Mgmt Agency
33 0080S 0190E 003	ALIQ		SENW,NESW,SWSE;	PRINEVILLE CENTRAL ORE	WHEELER	BUREAU OF LAND MGMT
33 0080S 0190E 010	ALIQ		W2NE,NESW;	PRINEVILLE CENTRAL ORE	WHEELER	BUREAU OF LAND MGMT
33 0080S 0190E 015	ALIQ		E2SW;	PRINEVILLE CENTRAL ORE	WHEELER	BUREAU OF LAND MGMT
33 0080S 0190E 015	LOTS		1;	PRINEVILLE CENTRAL ORE	WHEELER	BUREAU OF LAND MGMT
33 0080S 0190E 021	ALIQ		NESE;	PRINEVILLE CENTRAL ORE	WASCO	BUREAU OF LAND MGMT
33 0080S 0190E 022	ALIQ		NWSW;	PRINEVILLE CENTRAL ORE	WHEELER	BUREAU OF LAND MGMT
33 0080S 0190E 022	ALIQ		NWSW;	PRINEVILLE CENTRAL ORE	WASCO	BUREAU OF LAND MGMT

Serial Number: OROR-- - 034235

Act Date	Code	Action	Action Remark	Pending Office
02/26/1982	124	APLN RECD		
06/22/1982	307	ROW GRANTED-ISSUED		
06/22/1982	503	LENGTH IN MILES	1.466;	
06/22/1982	504	WIDTH IN FEET (TOTAL)	50;	
06/22/1982	506	POWERLINE VOLTAGE (KV)	115;	
09/27/1989	974	AUTOMATED RECORD VERIF	PW;	
06/21/2022	763	EXPIRES		

Serial Number: OROR-- - 034235

Line Nr	Remarks
0001	MUDDY RANCH TRANSMISSION LINE

**DEPARTMENT OF THE INTERIOR
BUREAU OF LAND MANAGEMENT
CASE RECORDATION
(MASS) Serial Register Page**

Run Time 06:47 PM

Page 1 of 4

Run Date: 06/06/10

01 10-21-1976;090STAT2776;43USC1761
Case Type 286203: ROW-TEL & TELEG,FLPMA
Commodity 971: NON-ENERGY FACILITIES
Case Disposition: AUTHORIZED

Total Acres
1.100

Serial Number
OROR-- - 024421

Serial Number: OROR-- - 024421

Name & Address	Int Rel	% Interest
TRANS CASCADE TELEPH PO BOX 189 ESTACADA OR 97023	HOLDER	100.000000000

Serial Number: OROR-- - 024421

Mer Twp Rng Sec	STyp	SNr Suff	Subdivision	District/Resource Area	County	Mgmt Agency
33 0080S 0190E 003	ALIQ		SENW,NESW;	PRINEVILLE CENTRAL ORE	WHEELER	BUREAU OF LAND MGMT
33 0080S 0190E 010	ALIQ		NESW;	PRINEVILLE CENTRAL ORE	WHEELER	BUREAU OF LAND MGMT
33 0080S 0190E 015	ALIQ		NWNW,SESW;	PRINEVILLE CENTRAL ORE	WHEELER	BUREAU OF LAND MGMT
33 0080S 0190E 023	ALIQ		NESW;	PRINEVILLE CENTRAL ORE	WHEELER	BUREAU OF LAND MGMT

Serial Number: OROR-- - 024421

Act Date	Code	Action	Action Remark	Pending Office
08/18/1980	124	APLN RECD		
05/04/1983	307	ROW GRANTED-ISSUED		
05/04/1983	502	LENGTH IN FEET	4709;	
05/04/1983	504	WIDTH IN FEET (TOTAL)	10;	
09/11/1990	974	AUTOMATED RECORD VERIF	PW;	
05/03/2013	763	EXPIRES		

Serial Number: OROR-- - 024421

Line Nr	Remarks
0001	BURIED TELEPHONE CABLE

**DEPARTMENT OF THE INTERIOR
BUREAU OF LAND MANAGEMENT
CASE RECORDATION
(MASS) Serial Register Page**

Run Time 06:48 PM

Page 4 of 4

Run Date: 06/06/10

01 10-21-1976;090STAT2776;43USC1761
Case Type 281001: ROW-ROADS
Commodity 971: NON-ENERGY FACILITIES
Case Disposition: AUTHORIZED

Total Acres
7.250

Serial Number
OROR-- - 058271

Serial Number: OROR-- - 058271

Name & Address	Int Rel	% Interest
	HOLDER/BILLEE	100.000000000
	PREVIOUS INT PARTY	0.000000000

Serial Number: OROR-- - 058271

Mer Twp	Rng	Sec	SType	SNr Suff	Subdivision	District/Resource Area	County	Mgmt Agency
33 0080S	0190E	023	ALIQ		NESW;	PRINEVILLE CENTRAL ORE	WHEELER	BUREAU OF LAND MGMT
33 0080S	0190E	024	ALIQ		SWSW;	PRINEVILLE CENTRAL ORE	WHEELER	BUREAU OF LAND MGMT
33 0080S	0190E	025	RSDL		SESW,SESE;	PRINEVILLE CENTRAL ORE	WHEELER	BUREAU OF LAND MGMT
33 0080S	0190E	025	RSDL		NENW,SWNW,NWSW,SWSW;	PRINEVILLE CENTRAL ORE	WHEELER	BUREAU OF LAND MGMT
33 0080S	0200E	019	ALIQ		S2SE;	PRINEVILLE CENTRAL ORE	WHEELER	BUREAU OF LAND MGMT
33 0080S	0200E	029	ALIQ		N2NW,W2NE;	PRINEVILLE CENTRAL ORE	WHEELER	BUREAU OF LAND MGMT

Serial Number: OROR-- - 058271

Act Date	Code	Action	Action Remark	Pending Office
09/09/2002	124	APLN RECD		
02/03/2003	065	COST RECOV (MON) RECD	\$50.00;2	
02/03/2003	840	CAT 1 COST RECOVERY-PROC		
02/03/2003	971	COST RECOV (PROC) RECD	\$125.00;1	
02/26/2003	111	RENTAL RECEIVED	\$525.96;5	
03/05/2003	307	ROW GRANTED-ISSUED		
03/05/2003	502	LENGTH IN FEET	15840;	
03/05/2003	504	WIDTH IN FEET (TOTAL)	20;	
01/04/2005	140	ASGN FILED		
01/04/2005	347	FILING FEE RECEIVED	\$50.00;1	
01/14/2005	974	AUTOMATED RECORD VERIF	PG;	
06/17/2005	139	ASGN APPROVED	SARI;	
01/01/2008	097	NEXT BILLING DATE	\$550;	
01/02/2008	111	RENTAL RECEIVED	\$124.92;1	
01/05/2009	111	RENTAL RECEIVED	\$421.90;1	
03/05/2018	853	COMPL/REVIEW DUE DATE		
03/04/2033	763	EXPIRES		

Serial Number: OROR-- - 058271

Line Nr	Remarks
---------	---------

RUN TIME: 11:52 AM

DEPARTMENT OF THE INTERIOR
BUREAU OF LAND MANAGEMENT

RUN DATE: 06/04/2010

Input Parameters for MC Geographic Report

System Id = MC

Admin State = OR

Geo State =

Mer Twp Rng =

Section =

Mtrs = 33 0080S 0190E 001, 33 0080S 0190E 003, 33 0080S 0200E 006, 33 0080S 0200E 028, 33 0080S 0200E 029, 33 0080S 0200E 031, 33 0080S 0200E 032, 33 0090S 0190E 001, 33 0090S 0190E 012, 33 0090S 0200E 005, 33 0090S 0200E 006, 33 0090S 0200E 007, 33 0090S 0200E 008, 33 0090S 0200E 009, 33 0090S 0200E 018

Adm Agency Begins With

Aliquot Part contains

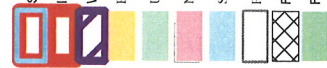
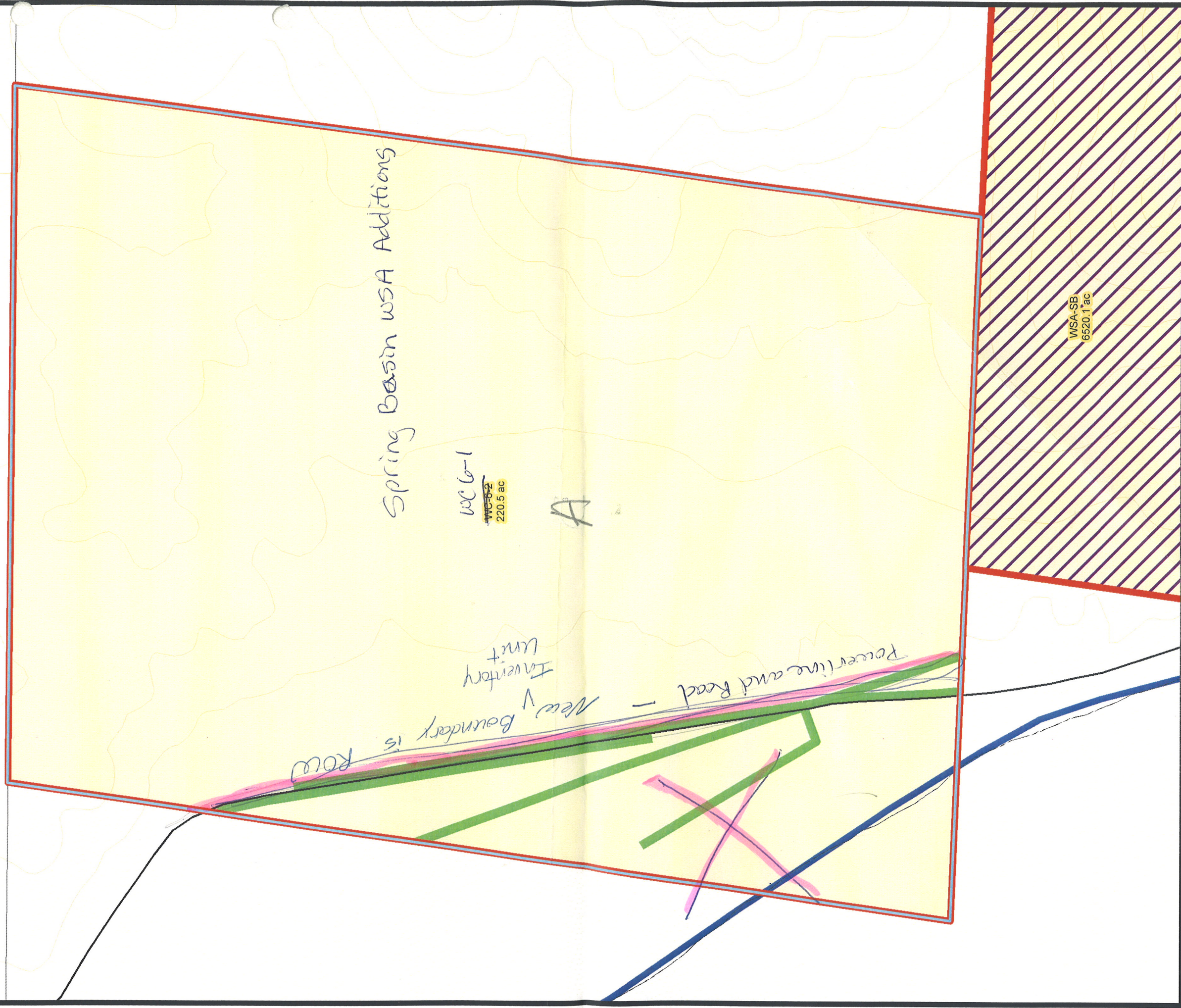
Case Disp Txt = ACTIVE, CLOSED, PENDING, VOID

Total Rows Returned: 0

No Mining Claims

NO WARRANTY IS MADE BY BLM
FOR USE OF THE DATA FOR
PURPOSES NOT INTENDED BY BLM

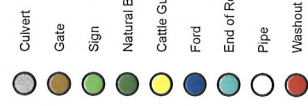
Add to: Lands w/ wilderness Character Map



Selected Inventory Unit
Inventory Unit
Wilderness Study Areas
BLM
US Forest Service
National Park Service
State
Private or Undefined
FS roadless areas
FS Wilderness

Public Access - Interim Designations
US, County, State and Local Roads
Interstate Highway
US Highway
State Highway
County Road
Municipal Road
Forest Service Roads
Arterial Road
Collector Road
Local Road

Rivers
Corrals
Mineral Resources
Water Points
Fences
Powerlines
Treatments

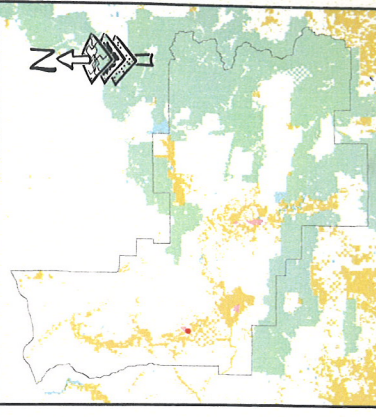


WC-6-2 WILDERNESS CHARACTER INVENTORY

0 0.04 0.08 0.12 0.16 Miles

U.S. DEPARTMENT OF THE INTERIOR
Bureau of Land Management
PRINEVILLE DISTRICT
5030 NE Third Street
Prineville, OR 97754
(541) 416-6700

Last Modified: 9/12/2007 1:07:59 PM
No warranty is made by the Bureau of Land Management as to the accuracy, reliability, or completeness of these data for individual or aggregate use. This information was developed through digital means and may be updated without notification.



14. Changes to Map

Add to Lands w/ Wilderness Character Map

Spring Basin WSA ~~WSA~~ Additions

1

6

WC-6-1
45.8 ac

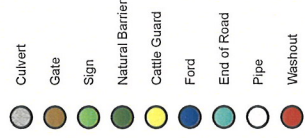
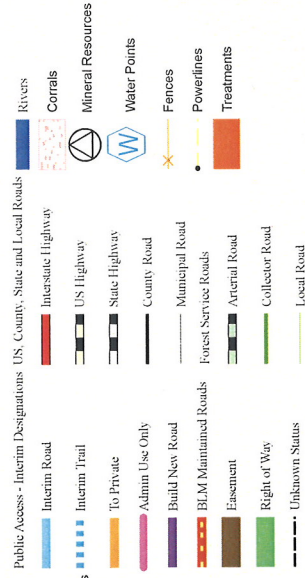
C

WC-6-1
39.9 ac

B

WSA-SB
6520.1 ac

42



WC-6-1

WILDERNESS CHARACTER INVENTORY

0 0.06 0.12 0.18 0.24 Miles

U.S. DEPARTMENT OF THE INTERIOR
Bureau of Land Management
PRINEVILLE DISTRICT
5030 NE Third Street
Prineville, OR 97754
(541) 416-0700

Last Modified: 9/12/2007 1:07:59 PM

No warranty is made by the Bureau of Land Management as to the accuracy, reliability, or completeness of these data for individual or aggregate use with other data. Original data were compiled from various sources. This map was developed through digital means and may be updated without notification.

