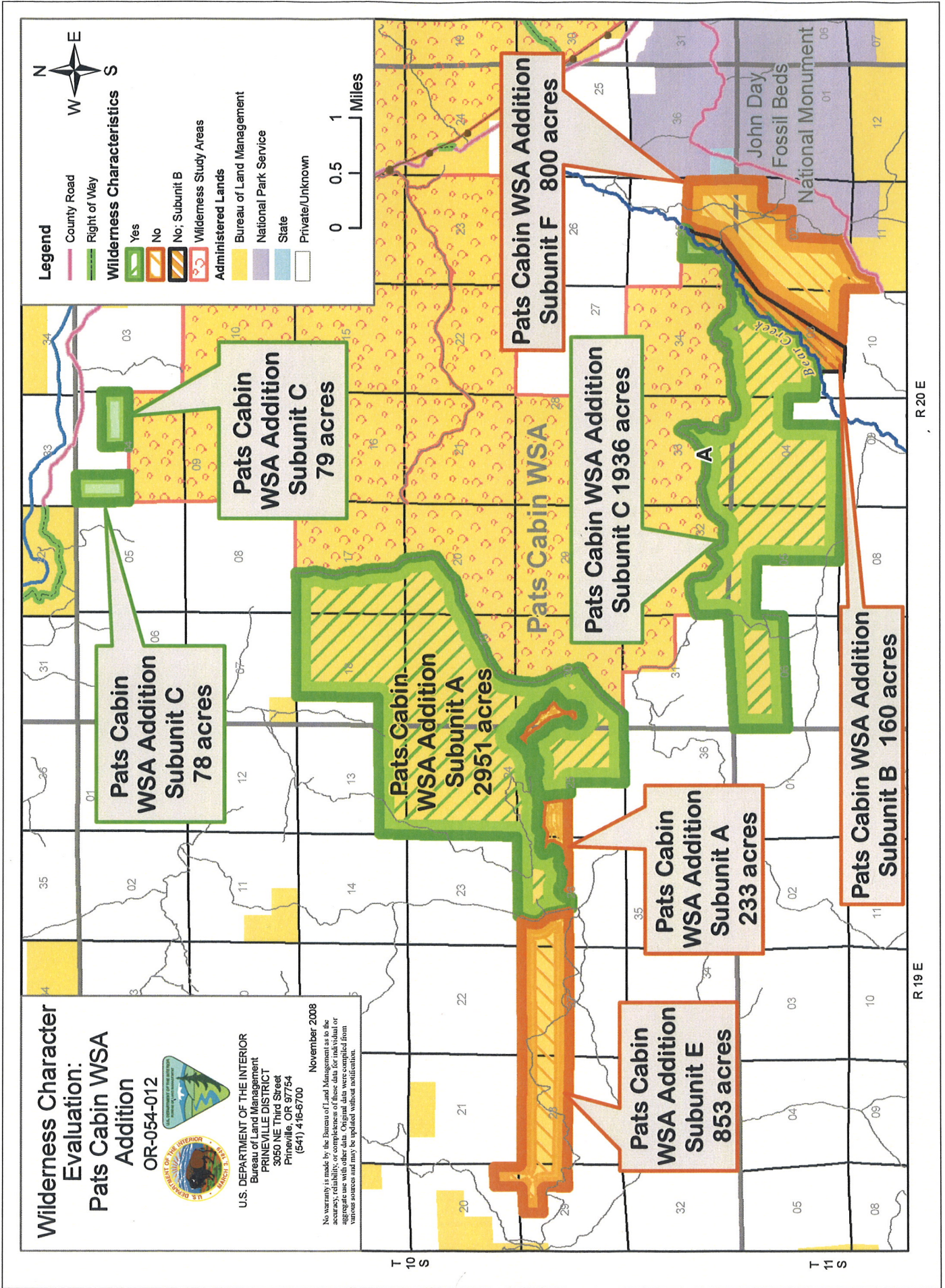


Map 1



2008 John Day Basin Wilderness Character Evaluation Form

Wilderness Character Evaluation For: OR-054-012/Pats Cabin WSA Additions Inventory Unit

1. Previous BLM wilderness inventory?

No _____ Yes X Partial _____

a) Inventory Source: Sutton Mountain Acquired Lands Wilderness Inventory, Bureau of Land Management, Sutton Mountain Coordinated Resource Management Plan (CRMP), March 1995, and Bureau of Land Management Sutton Mountain Coordinated Resource Management Plan (CRMP) Decision Record, March 1996.

b) Inventory Unit Name(s)/Number(s): Pats Cabin / OR-5-85

c) Map Name(s)/Number(s): N/A

d) BLM District(s)/Field Office(s): Prineville/Central Oregon Resource Area

Unit#/Name	Size (historic acres)	Natural Condition? Y/N	Outstanding Solitude? Y/N	Outstanding Primitive & Unconfined Recreation? Y/N	Supplemental Values? Y/N
OR-5-85 Pats Cabin	9,970	Y	Y	Y	Y

Note: Additional lands within this unit (Subunit B in 2008 inventory) were included in the Sutton Mountain Roadless Area review completed by the Central Oregon Resource Area, Prineville District BLM, in 1994. At that time the additional lands were dropped from further review and not carried forward to a wilderness inventory process.

2. New Wilderness Characteristic Review

Private Recommendation: Yes X - for BLM Subunits A and B No _____ by? Oregon Natural Desert Association Date: December 15, 2006

OR-054-012/Pats Cabin WSA Addition Inventory Unit

Results of BLM Analysis: (separate by subunit if appropriate)

Unit#/Name	Size (acres)	Natural Condition? Y/N/NA	Outstanding Solitude? Y/N/NA	Outstanding Primitive & Unconfined Recreation? Y/N/NA	Supplemental Values? Y/N/NA
OR-054-012 Subunit A (Upper John Day Gulch)	3,184	Y -2951 N-233	Y-Partial	Y-Partial	Y-Partial
OR-054-012 Subunit B (Bear Creek)	2,096	Y-1936 N-160	Y-Partial	Y-Partial	Y-Partial
OR-054-012 Subunit C (Northwest)	78	Y	Y	Y	Y
OR-054-012 Subunit D (Northeast)	79	Y	Y	Y	Y
OR-054-012 Subunit E (West Extension)	853	N/A	N/A	N/A	N/A
OR-054-012 Subunit F (Willow Spring)	800	N	N/A	N/A	N/A

Conclusion

Check One:

Area reviewed lacks sufficient size and does not meet one of the exceptions for small size.

The area-or a portion of the area-has wilderness character.

The area does not have wilderness character.

Recommendation: Re-evaluate the BLM lands near the south boundary of Subunit A following a major fire event to determine whether naturalness has returned to the area following juniper treatments. If it is determined that naturalness has returned to these lands, they could be added to Subunit A to form a more manageable unit boundary.

(1) Describe current conditions: (Include boundary features, land ownership, size, location, topography, vegetation features and summary of major human uses/activities).

OR-054-012/Pats Cabin WSA Addition Inventory Unit

Location: This unit is located in Wheeler and Jefferson Counties, Oregon, north of US Highway 26, south of the John Day River, between 8 and 15 miles northeast of the town of Mitchell. The unit contains 6,856 acres of BLM lands. The unit consists of 6 distinct subunits, each of which is adjacent to Pats Cabin Wilderness Study Area.

Original Inventory

Most of the lands within the inventory unit were acquired by the BLM in the Sutton Mountain Land Exchange, which was completed in 1992. In 1994, BLM conducted a wilderness inventory of these lands as directed by Section 202 of FLMPA as part of the Sutton Mountain Acquired Lands Wilderness Inventory. The inventory results were printed in the Sutton Mountain Coordinated Resource Management Plan (CRMP) (BLM, March 1995), and the Sutton Mountain Coordinated Resource Management Plan (CRMP) Decision Record (BLM, March 1996).

The 1994 inventory found that 9,920 acres of the Pats Cabin Unit (5-85) met the requirements for wilderness, and this portion of the unit was designated as a Wilderness Study Area. Fifty acres on the north eastern edge of the inventory unit were eliminated from further wilderness review because they were found to contain developments which do not conform to the requirements for Wilderness designation. It is assumed that the 50 acres eliminated from further wilderness review are located between the WSA and Bridge Creek where structures, an irrigation ditch, and other developments are currently found.

The lands contained in the current Subunit B were included in the Sutton Mountain Roadless Area review completed by the Central Oregon Resource Area, Prineville District BLM, in 1994. These lands were labeled Area F in 1994, at which time these lands were dropped from further review and not carried forward to a wilderness inventory process. The review described the Area F as:

“West of the Painted Hills National Monument and is less than 5,000 acres. This area is also intersected by a constructed road. This road is maintained and frequently used by grazing permittees.”

An additional 4,036 acres of lands, most acquired in the Sutton Mountain Land Exchange, were not inventoried for wilderness character with the rest of the acquired lands because they fell west of an arbitrary planning boundary set for the Sutton Mountain Coordinated Resource Management Plan (CRMP). These 4,036 acres are being inventoried in this report for the first time.

Description of Current Conditions

Four subunits are adjacent to Pats Cabin Wilderness Study Area, and one subunit is adjacent to the Painted Hills Unit of the John Day Fossil Beds National Monument.

Location of Subunits A, B, C, D, E and F:

Subunit A (Upper John Day Gulch): Subunit A is the largest subunit at 3, 184 acres in size. It includes portions of or all public lands in T 10 S., R 19 E., Sections 13, 24, 25, 26; T 10 S., R 20 E., Sections 17, 18, 19, 20, 30. The subunit is bordered on the east by Pats Cabin Wilderness

OR-054-012/Pats Cabin WSA Addition Inventory Unit

Study Area and on the west by a constructed, maintained road (See attached Road Analysis Form). The subunit is bordered on the north and south by a private land.

Subunit B (Bear Creek): Subunit B is 2,096 acres in size. It includes portions of or all public lands in T 10 S., R 20 E., Sections 32, 33, 34, 35; T 11 S., R 20 E., Sections 2, 3, 4, 5, 6. The subunit is bordered on the north by Pats Cabin Wilderness Study Area and private land and on the east by a Columbia Power power line for which there is no ROW. The subunit is bordered on the south and east sides by private land.

Subunit C (Northwest): Subunit C is 78 acres in size. It includes portions of or all public lands in T 10 S., R 20 E., Section 4. The subunit is bordered on the south by Pats Cabin Wilderness Study Area and on all other sides by private land.

Subunit D (Northeast): Subunit D is 79 acres in size. It includes portions of or all public lands in T 10 S., R 20 E., Section 4. The subunit is bordered on the south by Pats Cabin Wilderness Study Area and on all other sides by private land.

Subunit E (West Extension): Subunit E is 853 acres in size. It includes portions of or all public lands in T 10 S., R 19 E., Sections 20, 26, 27, 28, 29. The subunit is bordered on the east by a constructed, maintained road (See attached Road Analysis Form), and on all other sides by private land.

Subunit F (Willow Creek): Subunit F is 800 acres in size. It includes portions of or all public lands in T 10 S., R 20 E., Section 35; T 11 S., R 20 E., Sections 2, 3, 11. The subunit is bordered on the east by the Painted Hills Unit of the John Day Fossil Beds National Monument and by a Wheeler County gravel-surface road (Bear Creek Rd.). The subunit is bordered on the west by a Columbia Power power line for which there is no ROW, and on the north and south by private land.

Subunit E is separated from the WSA by a constructed road (See attached Road Analysis Form). At 853 acres, Subunit E lacks sufficient size to be considered as wilderness and does not meet one of the exceptions for small size. For this reason, Subunit E is not discussed further in this document.

Subunit F borders the Painted Hills Unit of the John Day Fossil Beds National Monument (3,129 acres) which is zoned and managed by the National Park Service as backcountry or primitive management zones to protect existing wilderness qualities. However, even when Subunit F (800 acres) is combined with the other contiguous Federal lands with identified wilderness characteristics, the combined total is less than 5,000 acres. For this reason Subunit F is not discussed further in this document.

Description:

Subunit A, to the west of Pat's Cabin WSA, is similar in topography to the adjacent WSA. The subunit includes the upper reaches of John Day Gulch, a cobble wash that flows with spring run-off and thunderstorm events, and drains a large area of highly erosive soils. Within the subunit, the upper reaches of the gulch narrow down and split into a spider-web-like system of draws that slope north towards the John Day River. Between the draws are numerous ridges; some rounded

OR-054-012/Pats Cabin WSA Addition Inventory Unit

and some steep-sided. Outcrops of volcanic rock and colorful clay hills are evident in places within the subunit. The vegetation in Subunit A includes Idaho fescue, bluebunch wheatgrass, sagebrush, juniper, rabbit brush, cheat grass, and some areas of medusa head. Two cactuses are found in the unit including hedgehog cactus, which provide an appealing floral display during spring. A cultural inventory has been completed on portions of the subunit for a prescribed burn. The results included the recording of 4 small prehistoric lithic scatters and an isolated find. The lower portion of this unit was designated a stock driveway in 1918 between the Sutton Mountain area and Ashwood to the west.

Man-Made Improvements: Approximately 2 miles of minor vehicle routes exist within the unit. Three juniper treatment areas (totaling 182 acres) are located in the south part of the unit. These juniper cut areas were found to have an unnatural appearance and were separated out from the remainder of the subunit. The perimeter of the treatment areas was used as the boundary to divide the natural and the unnatural portions of the subunit. This boundary also resulted in the exclusion of 50 non-cut (natural-appearing) acres along the south boundary line in Sections 25 and 26, which became isolated from the rest of the subunit.

Subunit B, to the south of Pat's Cabin WSA, is similar in topography to the adjacent WSA. The subunit contains a system of ephemeral draws that flow south to join Pass Gulch or Bear Creek. The subunit contains about 1.5 miles of Bear Creek, a permanent stream that contains native Steelhead. Soils are highly erosive and include the same colorful clays that are found in the nearby Painted Hills Unit of the John Day National Monument. The vegetation in Subunit B includes Idaho fescue, bluebunch wheatgrass, sagebrush, juniper, rabbit brush, cheat grass, and some areas of medusa head. Two cactuses are found in the unit including hedgehog cactus, which provide an appealing floral display during spring. Limited cultural inventories have been conducted within the subunit. One prehistoric house pit site was located and the possibility for others sites of this nature is high. According to the Historic Index, homestead entries were filed for along Bear Creek around 1900 to 1920 but many were relinquished after a few short years. This unit contains similar fossil resources (botanical-leaves) found in the Painted Hills unit of the John Day Fossil Beds National Monument.

Man-Made Improvements: Subunit B contains approximately 1.5 miles of fencing, an old reservoir, approximately $\frac{3}{4}$ mile of minor vehicle routes, and a historic cabin, each located west of Bear Creek. To the east of Bear Creek the subunit is more developed and contains approximately one mile of road, 1.5 miles of fencing, a reservoir which is in current use, and a previously farmed field. Along the east bank of Bear Creek, large steel cables are looped around the trunk of at least one old growth juniper tree, apparently as part of flood control efforts. The cables have been there so long that the tree trunk has grown to partially encapsulate the cables making it impractical to remove the cables without creating further damage to the tree.

Subunits C and D are small extensions of public land (78 and 79 acres, respectively) that are adjacent to the north boundary of the WSA in Section 4. The subunits are similar to the land in the adjacent WSA and were probably initially excluded from the WSA to create a more uniform boundary. The topography of the units consists of an undulating toe slope with highly eroded ephemeral draws. The draws decrease in elevation north towards the John Day River. The vegetation of these units is sagebrush, juniper, bunch grasses and cheatgrass. Neither of these two units have been inventoried for cultural resources. A cultural inventory in an adjacent section revealed a small CCS quarry apparently used in a fortuitous manner. Both units occur

OR-054-012/Pats Cabin WSA Addition Inventory Unit

south of and adjacent to the Dalles-Canyon City Military/Wagon road and the old Saltzman place which was one of many stage stops along the Dalles-Canyon City route.

Man-Made Improvements: Subunits C and D have been leased for potential oil and gas development (9/05/2001). Subunit C has no known improvements. Subunit D has a user created two-track vehicle route approximately ¼ mile in length. Subunits C and D are currently being used by the adjacent private landowners as unauthorized OHV play areas even though the area was closed to motorized vehicle use by the Sutton Mountain CRMP in 1996.

Subunits A, B, C and D:

Wildlife populations of Subunits A, B, C and D include mule deer, elk, mountain lion, bobcat, chukar, golden eagle, prairie falcon, California quail, meadowlarks and mountain bluebird.

The BLM Visual Resource Management Class of Subunit A, C and D is unknown, and of Subunit B is a combination of Class III and Class IV.

Current Land Uses: The lands located in Subunits A, B, C and D, have been leased for potential oil and gas development (9/05/2001). The lands in Subunit A, B, C and D are authorized for commercial grazing under the following BLM permits: Subunit A (Cherry Creek Allotment #2545), Subunit B (Crown Rock Allotment # 2609), Subunit C (North 80 Allotment # 2641) and Subunit D (Speckle Canyon Allotment # 2664). Recreational uses of subunits A, B, C and D include big game and upland bird hunting, hiking, and horseback riding.

(2) Is the unit in a natural condition?

Yes X-Partial No _____ N/A _____

Describe:

Several portions of the inventory unit are in a natural condition. Subunit A, excluding the juniper cut portion, appears to be in a natural condition. The portion of Subunit B located west of Bear Creek appears to be in a natural condition. The portion of Subunit B located east of Bear Creek is not in a natural condition as it contains a power line, two roads, a reservoir, modifications to the creek, and previous farming. Subunits C and D each appear to be in a natural condition, except for unauthorized ATV trails.

(3) Does the unit have outstanding opportunities for solitude?

Yes X No _____ N/A _____

Description:

When considered in conjunction with the adjacent Sutton Mountain WSA, the varied topography of Subunits A, B, C and D would provide outstanding opportunities for solitude.

(4) Does the unit have outstanding opportunities for primitive and unconfined recreation?

Yes X No _____ N/A _____

Description:

When considered in conjunction with the adjacent Sutton Mountain WSA, Subunits A, B, C and D provide outstanding opportunities for hunting, hiking, and nature study.

OR-054-012/Pats Cabin WSA Addition Inventory Unit

(5) Does the unit have supplemental values?

Yes X No N/A

Description:

Several historic cabins are found within the unit and prehistoric sites have been located during recent cultural inventories.

OR-054-012/Pats Cabin WSA Addition Inventory Unit

Prepared by:

Team Members: (Names, Titles, Date)

Initial Review Aug. 14, 2007 by: Heidi Mottl (Recreation/Wilderness), Teal Purrington (NEPA/Planning), Dorothy Thomas (GIS), Anna Smith (Hydrology), Mike Tietmeyer (Range), Dan Tippy (Assistant Field Manager), Rick Demmer (Riparian), Monte Kuk (Wildlife), Robert Vidourek (Forestry), Mike Williams (Planning), Berry Phelps (Recreation), Craig Obermiller (Range), John Morris (Fish), Dana Cork (Transportation), Christina M. Welch (Field Manager), Don Tschida (Fire), Gavin Hoban (GIS), John Zancanella (Cultural), JoAnne Armson (Plants), Jeff Moss (Fisheries).

Realty/Mineral Records researched by Timothy Finger, BLM Wilderness Specialist on detail from Richland, UT, October, 2008.

Approved by:

Christina M. Welch

Field Manager

Oct. 31, 2007

Date

This form documents information that constitutes an inventory finding on wilderness characteristics. It does not represent a formal land use allocation or a final agency decision subject to administrative remedies under either 43 CFR parts 4 or 1610.5-2.

OR-054-012/Pats Cabin WSA Addition Inventory Unit

PURPOSE:

This addendum provides signatory authority across gaps in supervisory oversight in the preparation process.

DISCUSSION:

Further study has been conducted to validate the findings approved by the original signator, Christina Welch. As the new Field Manger for the Resource Area and Ms. Welch's replacement I have been briefed by the specialists assigned on the contents and underlying rationale for the findings contained in this document. I approve these findings with my signature below.

APPROVED BY:


SIGNATURE

Thursday, July 08, 2010

OR-054-011/ Sand Mountain Inventory Unit

PURPOSE:

This addendum provides signatory authority across gaps in supervisory oversight in the preparation process.

DISCUSSION:

Further study has been conducted to validate the findings approved by the original signator, Christina Welch. As the new Field Manger for the Resource Area and Ms. Welch's replacement I have been briefed by the specialists assigned on the contents and underlying rationale for the findings contained in this document. I approve these findings with my signature below.

APPROVED BY:


SIGNATURE

Thursday, July 08, 2010

John Day Basin RMP Road Analysis Form

(Factors to consider when determining whether a route is a road for wilderness inventory purposes.)

Wilderness Inventory Area Name and Number (UNIT_ID): Pats Cabin WSA Addition (OR-054-012)

Route Name and/or Identifier: South WSA Boundary Route (ONDA # ccn3) (Labeled as "A" on Map 1)

I. LOCATION: Please refer to attached map and BLM corporate data (GIS). Route begins at the National Monument boundary in T 11 S., R 20 E., Section 2 and travels approximately 5 miles heading north, crossing Bear Creek, and continuing west until it leaves public land in T 10 S, R 20 E., Section 31.

II. CURRENT PURPOSE OF ROUTE: The portion of the route south and east of Bear Creek crossing is used for administrative and grazing management purposes. The portion of the route west of Bear Creek crossing was previously used for administrative purposes; specifically for fire and range management, and access to the WSA boundary. However, in approximately 2006, most BLM employees stopped driving through Bear Creek in an effort to protect the improving riparian and fish conditions. The route is gated on each end and closed to public use by the Sutton Mountain CRMP.

III. ROAD RIGHT-OF-WAY:

Yes ___ No X Unknown ___

IV. CONSTRUCTION

Yes X No _____

Examples:

Paved _____ Bladed X Graveled _____ Roadside Berms X
Cut/Fill X Other _____

V. IMPROVEMENTS

Yes _____ No X (None within Subunit B)

By Hand Tools _____ By Machine _____

OR-054-012/Pats Cabin WSA Addition Inventory Unit

Culverts _____ Stream Crossings _____ Bridges _____ Drainage _____ Barriers _____ Other _____

Note: A culvert exists in Subunit E, a Subunit which was dropped from wilderness consideration.

VI. MAINTENANCE:

A. Is there Evidence or Documentation of Maintenance using hand tools or machinery?

Yes _____ No X (None in Subunit B)

Hand Tools _____ (Y/N) _____ Machine _____ (Y/N) _____

Explain: See BLM FAMS data in reference section. Is the route scheduled to receive maintenance? No

B. If route is in good condition, but there is no evidence of maintenance, would mechanical maintenance with hand tools or machines be approved by BLM in the event this route became impassable?

Yes _____ No X N/A _____

Comments: The BLM may maintain the route south and east of Bear Creek crossing, however it was decided that vehicles should no longer drive across the creek and constructing a bridge would not be practical. Maintenance of the route west of Bridge Creek would not be approved.

VII. REGULAR AND CONTINUOUS USE:

Yes X No _____

VIII. CONCLUSION:

To meet the definition of a road, items IV or V, *and* VI-A or B, *and* VII must be checked yes.

Road: Yes _____ No X

Explanation: Maintenance of the route west of Bridge Creek would not be approved, therefore this portion of the route does not meet the definition of a road.

Evaluator(s): Heidi Mottl Date: 8/14/07

* **road:** An access route which has been **improved and maintained** by **mechanical means** to insure **relatively regular and continuous use**. A way maintained solely by the passage of vehicles does not constitute a road.

OR-054-012/Pats Cabin WSA Addition Inventory Unit

a. **“Improved and maintained”** – Actions taken physically by people to keep the road open to vehicle traffic. “Improved” does not necessarily mean formal construction. “Maintained” does not necessarily mean annual maintenance.

b. **“Mechanical means”** – Use of hand or power machinery or tools.

c. **“Relatively regular and continuous use”** – Vehicular use that has occurred and will continue to occur on a relatively regular basis. Examples are: access roads for equipment to maintain a stock water tank or other established water sources; access roads to maintained recreation sites or facilities; or access roads to mining claims.

John Day Basin RMP Road Analysis Form

(Factors to consider when determining whether a route is a road for wilderness inventory purposes.)

Wilderness Inventory Area Name and Number (UNIT_ID): Pats Cabin WSA Additions (OR-054-012)

Route Name and/or Identifier: Sandrock Gulch Road (Labeled as "B" on Map 1)

I. LOCATION: Please refer to attached map and BLM corporate data (GIS). BLM portion of route begins and ends in T 10 S., R 19 E., Section 26.

II. CURRENT PURPOSE OF ROUTE: This route travels across private land for many miles, and crosses BLM land for only 1/2 mile. It is used by adjacent landowners primarily for access to private land hunting and grazing management. BLM occasionally obtains permission from landowners to use the route for fire and fuels purposes. Only BLM portion of route is evaluated below:

III. ROAD RIGHT-OF-WAY:

Yes ___ No X Unknown ___

IV. CONSTRUCTION

Yes X No _____

Examples:

Paved _____ Bladed X Graveled _____ Roadside Berms _____
Cut/Fill _____ Other _____

V. IMPROVEMENTS

Yes _____ No X

By Hand Tools _____ By Machine _____

Culverts _____ Stream Crossings _____ Bridges _____ Drainage _____ Barriers _____ Other _____

VI. MAINTENANCE:

A. Is there Evidence or Documentation of Maintenance using hand tools or machinery?

Yes X No _____

OR-054-012/Pats Cabin WSA Addition Inventory Unit

Hand Tools ___(Y/N)___ Machine Y (Y/N)___

Explain: See BLM FAMS data in reference section. Is the route scheduled to receive maintenance? No.

B. If route is in good condition, but there is no evidence of maintenance, would mechanical maintenance with hand tools or machines be approved by BLM in the event this route became impassable?

Yes X No ___N/A___

Comments: If necessary to maintain passage on this through route, BLM would likely approve maintenance, as most of the route is across private land and a very small portion of this route crosses BLM.

VII. REGULAR AND CONTINUOUS USE:

Yes X No ___

VIII. CONCLUSION:

To meet the definition of a road, items IV or V, and VI-A or B, and VII must be checked yes.

Road: Yes X No ___

Explanation: If necessary to maintain passage on this through route, BLM would likely approve maintenance, as most of the route is across private land and a very small portion of this route crosses BLM.

Evaluator(s): Heidi Mottl Date: 8/14/07

* **road:** An access route which has been **improved and maintained by mechanical means** to insure **relatively regular and continuous use**. A way maintained solely by the passage of vehicles does not constitute a road.

a. **“Improved and maintained”** – Actions taken physically by people to keep the road open to vehicle traffic. “Improved” does not necessarily mean formal construction. “Maintained” does not necessarily mean annual maintenance.

b. **“Mechanical means”** – Use of hand or power machinery or tools.

c. **“Relatively regular and continuous use”** – Vehicular use that has occurred and will continue to occur on a relatively regular basis. Examples are: access roads for equipment to maintain a stock water tank or other established water sources; access roads to maintained recreation sites or facilities; or access roads to mining claims.

OR-054-012/Pats Cabin WSA Addition Inventory Unit

John Day Basin Wilderness Characteristics – PHOTO LOG
(modify form as needed)

Photographer(s): Heidi Mottl

Inventory Area Name & No.: Pat's Cabin WSA Addition Inventory Unit / OR-054-012

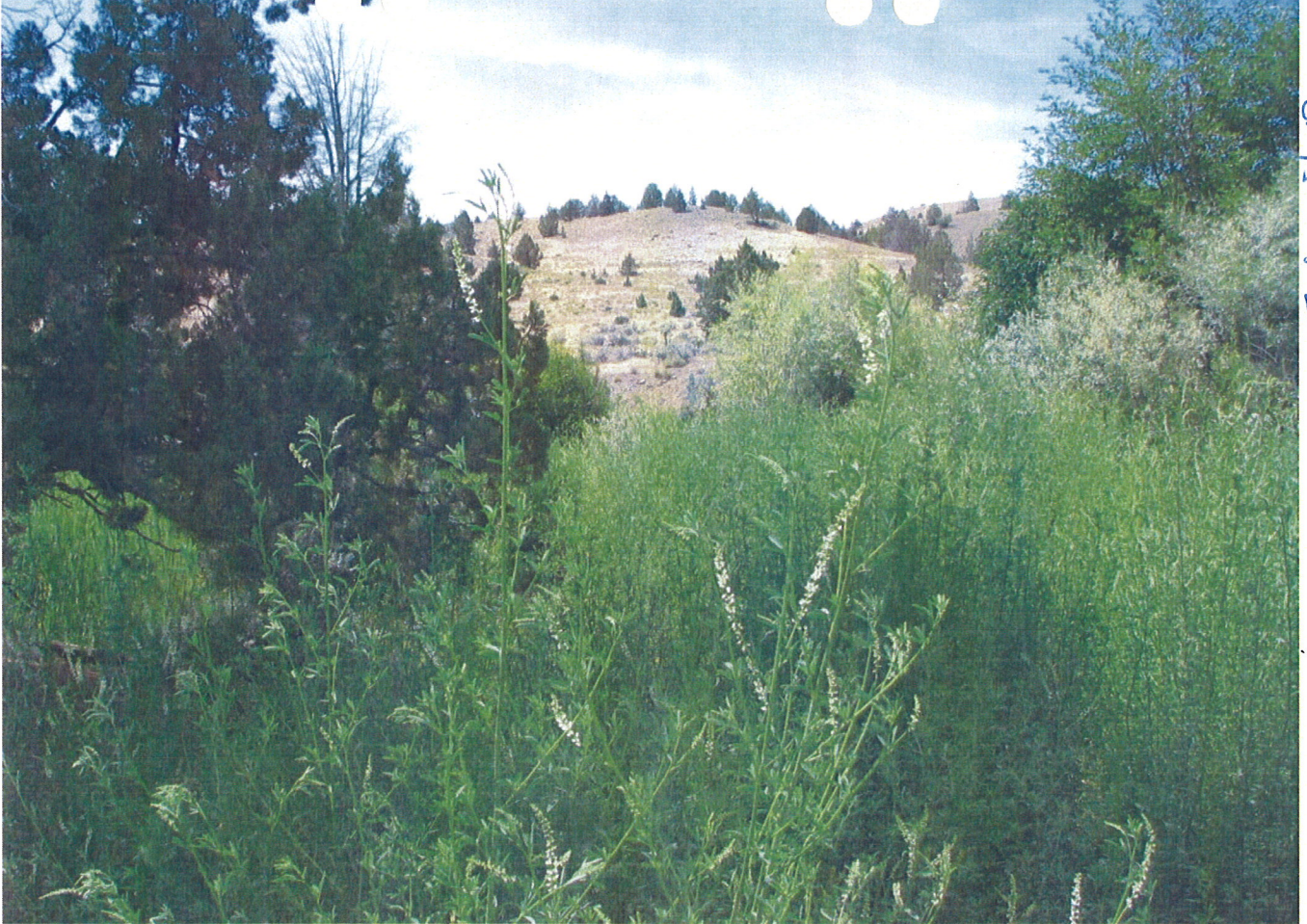
Date	Frame #	Camera Direction	Description	GPS/UTM Location	Township	Range	Sec.
6/27/07	1	W	South WSA Boundary Route (ONDA #ccn3) East side of Bear Creek Crossing		11 South	20 East	35
6/27/07	2	W	(ONDA #ccn3) Middle of Bear Creek Crossing		11 South	20 East	35
6/27/07	3	W	(ONDA #ccn3) West Side of Bear Creek Crossing		11 South	20 East	35
8/10/07	4	NW	Pats' Cabin WSA South boundary road, west of Bear Creek crossing		10 South	20 East	35
8/10/07	5	W	Looking west across Subunit B		11 South	20 East	2
8/10/07	6	W	Cabin in Subunit B		11 South	20 East	2

OR-054-012/Pats Cabin WSA Addition Inventory Unit

2/1/05	7	NE	Unit 1 juniper cut in progress		10 South	19 East	26
2/1/05	8	N	Unit 2 juniper cut in progress		10 South	20 East	30
3/2/05	9	N	Unit 2 juniper cut in progress		10 South	20 East	30

Photo #1

Pats Cabin South WSA Addition



Subunit B



Photo #2 Pats Cabin WSA Addition - Subunit B

Photo #3

Pat's Cabin South 5A Addition



Subunit B

Photo #4 Pats Cabin WSA Addition (Pats Cabin South) - Subunit B



Photo # 5

Pats Cabin South Addition



Subunit B



Photo # 6 Pats Cabin WSA Addition - subunit B

Photo # 7 Unit 1 in Progress ○ ○

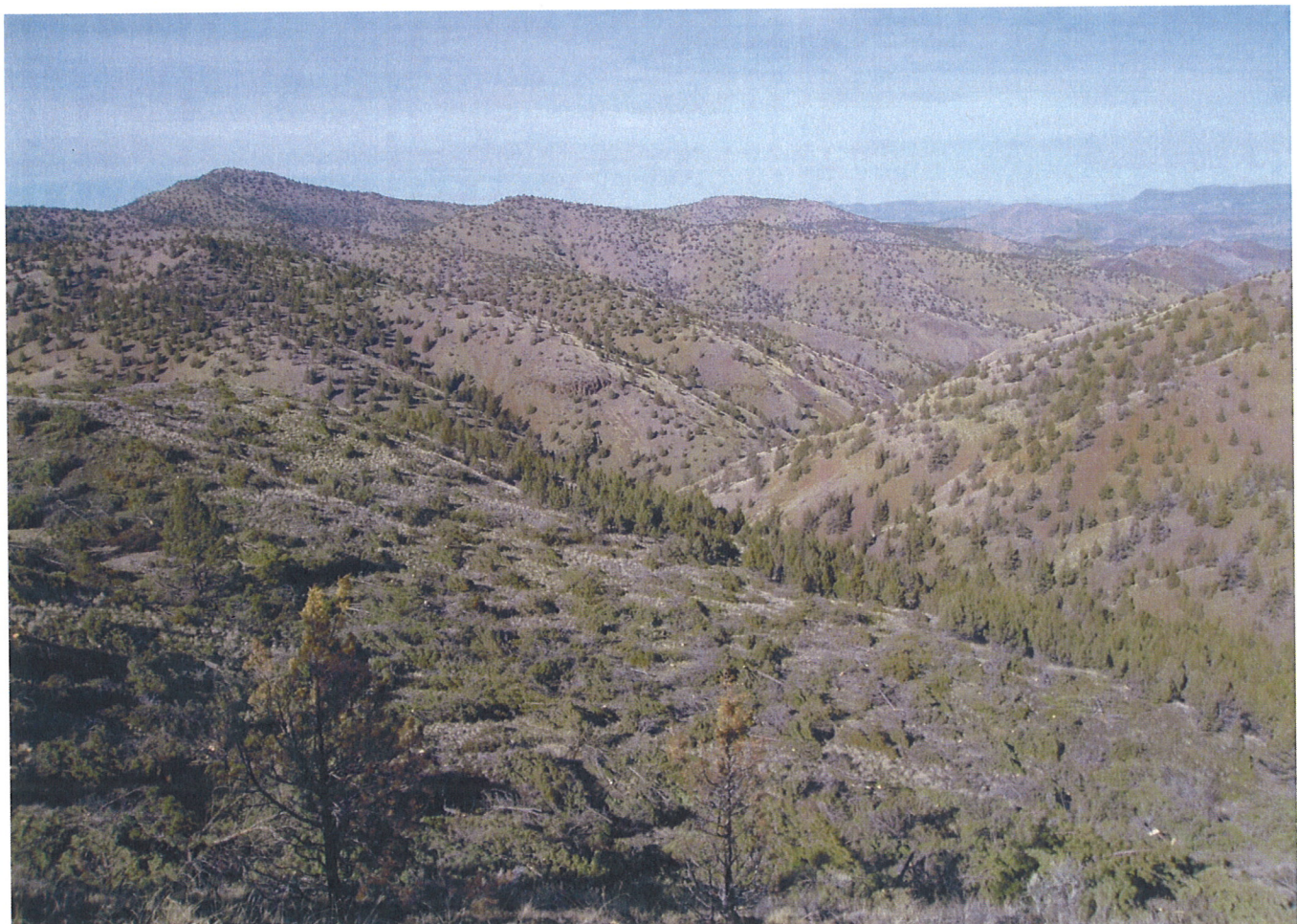


Photo # 8 - Unit 2 in Progress

Photo #9 Unit 2 in Progress



REFERENCES

1. Realty program

a. Master Title Plats

T 10 S., R 19 E. and R 20 E.

T 11 S., R 19 E. and R 20 E.

b. BLM LR 2000 Record search for Case File OR 49206 land exchange.

2. Mineral Program

Public Law 167 (July 23, 1955). Restriction of use of Unpatented Mining Claims,
43 CFR 3710

BLM Oil and Gas Leases – No active leases

3. GIS Program

USGS National Map project

BLM GIS data Lower John Day River public lands map, June 1991

The BLM has identified the following man-made features:

None

Team Comments – 8/14/07:

Comments on Subunit A:

Tippy- What is the history of this piece?

Mottl- We did not inventory this newly acquired land, because an arbitrary planning boundary (an allotment boundary) was used in the CRMP. It has similar character to its surroundings. The John Day Gulch has a road and a cherry stem. Lyle thinks it has wilderness character.

Comments on Subunit B:

Mottl- The field review has revealed that the road crossing has not been used for a while and has rabbit brush growing up through the middle of it. The road was constructed, but do we need to maintain it?

Tippy- Are there any developments?

Mottl- There is a reservoir, which was maintained at least once by the permittee. When the permittee learned that a new EA would need to be completed each time reservoir maintenance was requested, he withdrew his subsequent maintenance request.

Morris- OWRD might want to examine it – but they could hike in.

Mottl- The power line should become the boundary – but it doesn't have a ROW that we see in GIS.

Tippy- The riparian area has 12-15 ft. tall alder and tons of steelhead.

Tippy- Bear Creek in the upper end is in very good condition for steelhead and has had high redd counts.

OR-054-012/Pats Cabin WSA Addition Inventory Unit

Mottl- The park service won't let neighbors drive across NPS land, but there has been unauthorized recreational bulldozing in one area.

Kuk- There are ATVs during hunting season.

Kuk- Juniper cuts have happened? Dan says no.

Tippy- I have a question about the crossing on Bear creek. Will we maintain it or use it? Ask Lyle about fences and range improvements.

Zancanella- I go into that area, but I don't drive across the creek

Moss- Bear Creek crossing is not needed. I don't want to improve that road crossing.

Kuk- The road on the northern boundary might be a fire access road.

Comments on Subunit E:

Tippy- The extension to the west has a road and is unmanageable in shape.

Phelps – It is too narrow.

Zancanella- Is this little piece out? It can't go corner to corner.

**DEPARTMENT OF THE INTERIOR
BUREAU OF LAND MANAGEMENT
CASE RECORDATION
(MASS) Serial Register Page**

Run Time 08:26 PM

Page 1 of 1

Run Date: 07/01/10

01 10-21-1976;090STAT2755;43USC1715
Case Type 210013: ACQ-FLPMA
Commodity 001: NONE
Case Disposition: AUTHORIZED

Total Acres
164.000

Serial Number
OROR-- - 049206

Serial Number: OROR-- - 049206

Name & Address			Int Rel	% Interest
BLM-PRINEVILLE DO	3050 NE 3RD ST	PRINEVILLE OR 97754	GRANTOR ACQUIRING AGENCY	0.00000000 100.00000000

Serial Number: OROR-- - 049206

Mer Twp	Rng	Sec	SType	SNr Suff	Subdivision	District/Field Office	County	Mgmt Agency
33 0060S	0140E	013	FF	1	N2 LYING S OF OR HWY 197.	PRINEVILLE DESCHUTES	WASCO	BUREAU OF LAND MGMT
33 0060S	0140E	013	FF	2	POR NWSE LYING W OF OR	PRINEVILLE DESCHUTES	WASCO	BUREAU OF LAND MGMT
33 0060S	0140E	013	FF	3	HWY 197, N2SW, EXCEPT POR	PRINEVILLE DESCHUTES	WASCO	BUREAU OF LAND MGMT
33 0060S	0140E	013	FF	4	CONVEYED TO PAC. NW BELL;	PRINEVILLE DESCHUTES	WASCO	BUREAU OF LAND MGMT

Serial Number: OROR-- - 049206

Act Date	Code	Action	Action Remark	Pending Office
03/26/1992	387	CASE ESTABLISHED		
03/27/1992	095	FUNDED BY LWCF		
03/27/1992	501	REFERENCE NUMBER	PROJ-H049;	
03/27/1992	545	SUBACTIVITY CODE	3110;	
05/01/1992	500	GEOGRAPHIC NAME	CRITERION RANCH;	
05/01/1992	542	SUPPLEMENTAL USE/PURPOSE	077;	
12/07/1992	133	APPR-REAPPR RQSTD		
04/29/1993	068	CONTAMINANT SRVY APPV		
01/09/1995	132	APPRAISAL/REAPPR APPV	\$659000.00;	
06/11/1996	866	DEED SIGNED		
06/13/1996	404	TITLE RECORDATION	96,2660;	
06/13/1996	859	PAYMENT MADE	\$659000.00;	
09/11/1997	865	TITLE ACCEPTED BY US		
09/19/1997	974	AUTOMATED RECORD VERIF	LEH;	

Serial Number: OROR-- - 049206

Line Nr	Remarks
0001	APPRAISAL FOR \$1,200,000.00 FOR UNLIMITED REC. USE
0002	APPRAISAL FOR \$570,000.00 FOR LIMITED RECREATION USE
0003	FACILITATOR NEGOTIATED PRICE PRIOR TO LEGAL DECISION
0004	SEE OR-53274 FOR THE EXCHANGE PORTION IN ADDITION TO
0005	THIS ACQUISITION.

Prineville District
Categorical Exclusion
Review and Approval

Name of Proposed Action: Pats Cabin Juniper Cut

CE Number: ~~OR-05-04-085~~ OR-054-04-085

Project or Serial Number: CORA 735233 (2824 JT MD 84)

Location of Proposed Action: The project is located approximately 10 miles NW of the town of Mitchell, Oregon in Township 10S, Range 20E sections 25 and 26, and Township 10S, Range 21E section 30; located in John Day Gulch. (see attached map)

Purpose of and Need for Action:

Western juniper was traditionally confined, as a result of its natural susceptibility to wildfire, to the rocky outcroppings, cliffs and scab flats common to much of central Oregon. In the last two hundred years, potentially resulting from grazing practices, general climate change and alterations in the natural fire regime, western juniper has made its way down from canyon rims to interact with the vegetative, hydrologic and terrestrial systems of this region.

The majority of rangeland sites considered for treatment are dominated by western juniper. The projects goal is to have a greater mix of ecological conditions throughout the area. Juniper cutting would increase desirable shrubs, grasses, and forbs while reducing the quantity of juniper. Habitat and vegetative diversity are expected to increase, leading to a corresponding increase in species richness. In the long term, increased vegetative diversity will also enhance the scenic quality of the region.

The purpose of this project is to cut western juniper in the John Day Gulch area in order to 1) restore the health and diversity of the vegetation, 2) control the spread of western juniper, 3) reduce hazardous fuels, and 4) improve long-term hydrological regimes (water quality, flow, timing etc.) 5) in the long term reintroduce fire as a natural process in the ecosystem (and maintain the natural fire cycle in the future) in order to restore the ecosystem to a more healthy, better functioning state. The proposed action will also serve to improve watershed conditions by reducing the amount of bare ground and increasing grass cover and organic matter.

The movement of these areas toward their ecological site potential would improve wildlife habitat and diversity and assist in moving the areas toward fire cycles that could be maintained (Central Oregon Fire Plan [Chapter 3, pgs 3-6]).

Description of the Proposed Action:

The proposed action is to cut, by chainsaw, approximately 500 acres of western juniper within multiple units. The first year of the project consists of 3 units for 200 acres. Additional cutting in future years will depend on funding. All juniper trees will be completely severed from the stump(s). No live limbs will be left on the stump of cut trees. Stump height will not exceed 10", measured on the uphill side. No juniper trees over 18" dbh or exhibiting "old growth" characteristics will be cut. All Ponderosa pine, hardwoods, and snags (including juniper snags) will not be cut. Any trees with cultural significance or obvious wildlife occupation (i.e., cavities, bird nests) will not be cut.

Cut units will be broken out into multiple units to be cut over the next 2-3 years.

Plan Conformance:

The above project has been reviewed and found to be in conformance with one or more of the following BLM plans:

Two Rivers RMP; ROD and RPS (1986)

Manage upland vegetation to achieve maximum wildlife habitat diversity (Page 10).

Upland vegetation will be managed through.....range/wildlife habitat development to provide maximum wildlife habitat diversity (Page 11).

Vegetative manipulation project will be designed to minimize wildlife habitat impacts and to improve habitat when possible (Page 11).

Sutton Mountain CRMP (1996)

There will be no restrictions on the kinds of cost effective methods that may be used for vegetation treatments.

Categorical Exclusion Reference:

The proposed action is categorically excluded from further analysis or documentation under the National Environmental Policy Act (NEPA) in accordance with 516 DM2, Appendix 1, 1.12 (Fuels reduction). The application of this categorical exclusion is appropriate, as there are no extraordinary circumstances potentially having effects which may significantly affect the environment. The proposed action would not create adverse environmental effects or trigger an exception. None of the following exceptions apply.

Exceptions to Categorical Exclusions Documentation:

Exceptions to Categorical Exclusions Documentation:

The proposed action would not create adverse environmental effects under the CE exceptions, unless as noted. The propose action will:

E Exception	YES	NO
1. Have significant adverse effects on public health or safety?		X
2. Have significant, adverse effects on unique geographic characteristics or features, or on special designation areas such as historic or cultural resources; park, recreation, or refuge lands; wilderness areas; wild or scenic rivers; sole or principal drinking water aquifers; or prime farmlands. This also includes ecologically significant or critical areas, such as significant caves, Areas of Critical Environmental Concern (ACECs), National Monuments, Wilderness Study Areas, Research Natural Areas, and those listed on the National Register of Natural Landmarks?		X
3. Have highly controversial environmental effects (40 CFR 1508.14)?		X
4. Have highly uncertain and potentially significant environmental effects or unique or unknown environmental risks?		X
5. Establish a precedent for future action or represent a decision in principal about future actions with potentially significant environmental effects?		X
6. Be directly related to other actions with individually insignificant, but significant cumulative environmental effects, which include connected actions on private lands (40 CFR 1508.7 and 1508.25(a)?		X
7. Have adverse effects on properties listed or eligible for listing on the National Register of Historic Places, which includes Native American religious or cultural sites, archaeological sites, or historic properties?		X
Cultural Clearance Initial	<i>6/23/04</i> <i>no concerns.</i>	

Off 6/23/04
no concerns

<p>8. Have adverse effects on species listed or proposed to be listed as Federally Endangered or Threatened Species, or adverse effects on designated critical habitat for these species? This includes impacts on BLM-designated sensitive species or their habitat. When a Federal listed species or its habitat is encountered, a Biological Evaluation (BE) shall document the effect on the species. The responsible official may proceed with the proposed action without preparing a NEPA document when the BE demonstrates either a "no affect" determination or a "may affect, not likely to adversely affect" determination.</p>					X
T&E Clearances Initial	Wildlife	SL 7/1/04			
	Fish	BA 7/1/04			
	Plants	RM 2/4/04	Waiver	ref. 04017	
<p>9. Fail to comply with (Executive Order 11988, Floodplain Management); (Executive Order 11990, Protection of Wetlands), or the Fish and Wildlife Coordination Act?</p>					X
<p>10. Violate a Federal, State, Local, or Tribal law, regulation or policy imposed for the protection of the environment, where non-Federal requirements are consistent with Federal requirements?</p>					X
<p>11. Involve unresolved conflicts concerning alternative uses of available resources (NEPA section 102(2)(E)) not already decided in an approved land use plan?</p>					X
<p>12. Have disproportionate significant adverse impacts on low income or minority populations (Executive Order 12898, Environmental Justice)?</p>					X
<p>13. Restrict access to, and ceremonial use of, Indian sacred sites by Indian religious practitioner or adversely affect the physical integrity of such sacred sites (Executive Order 13007, Indian Sacred Sites)?</p>					X
<p>14. Have significant adverse effects on Indian Trust Resources?</p>					X
<p>15. Contribute to the introduction, existence, or spread of federally listed noxious weeds (Federal Noxious Weed Control Act); or invasive non-native species (Executive Order 13112, Invasive Species)?</p>					X
<p>16. Have a direct or indirect adverse impact on energy development, production, supply, and/or distribution (Executive Order 13212, Actions to Expedite Energy-Related Projects)?</p>					X

~~04017~~

6/23/04
none that we are aware of

6/23/04

Documentation of Recommended Mitigation:

For any item checked "YES" identify the mitigating measures proposed. If an item is checked "YES" and no mitigation measures are proposed, the conditions for the CE cannot be met.

Item Number	Can Be Mitigated	Cannot Be Mitigated	Mitigation Measures
N/A			

Summary of Findings:

The proposed action would not create adverse environmental impacts or require the preparation of an EA or EIS under 516 DM 2, Appendix 1 or 516 DM 6, Appendix 5. The proposed action has been reviewed against the criteria for an exception to a categorical exclusion listed in 516 DM 2.3 A(3), or the additional criteria listed in Instruction Memorandum No. 99-178, the Lacey Act, as amended; the Federal Noxious Weed Act of 1974; the Endangered Species Act of 1973, as amended; EO 13112 on Invasive Species; EO 12898 on Environmental Justice; Clean Water Act of 1987; Safe Drinking Water Act Amendments to the Clean Water Act of 1996; EO 12088 on federal compliance with pollution control standards, as amended; EO 12589 on Superfund compliance; and EO dated July 14, 1982 on intergovernmental review of federal programs. In addition, this CE complies with IM 2002-053 on the Preparation of Statement(s) of Adverse Energy Impact.

Recommendation:

for / Scott Cook Prepared By Title Wild Bid Date 7/21/04
Shaun Larson
Fuels Specialist

CE Determination:

The proposed action and any specified mitigation measure(s) has been determined to meet the criteria for a CE and does not fall under any of the CE exceptions. No additional environmental analysis required. All cultural, T&E plant, and T&E wildlife specialists have provided clearances for the proposed project. (Initial exception list or provide survey report or waiver as an attachment.)

Dan Tippy Reviewed By Date 15 July 04
Dan Tippy
Assistant Field Manager/Environmental Coordinator

Approval:

Based on a review of the proposal and field office staff recommendations, I approve of the project as proposed and mitigated:

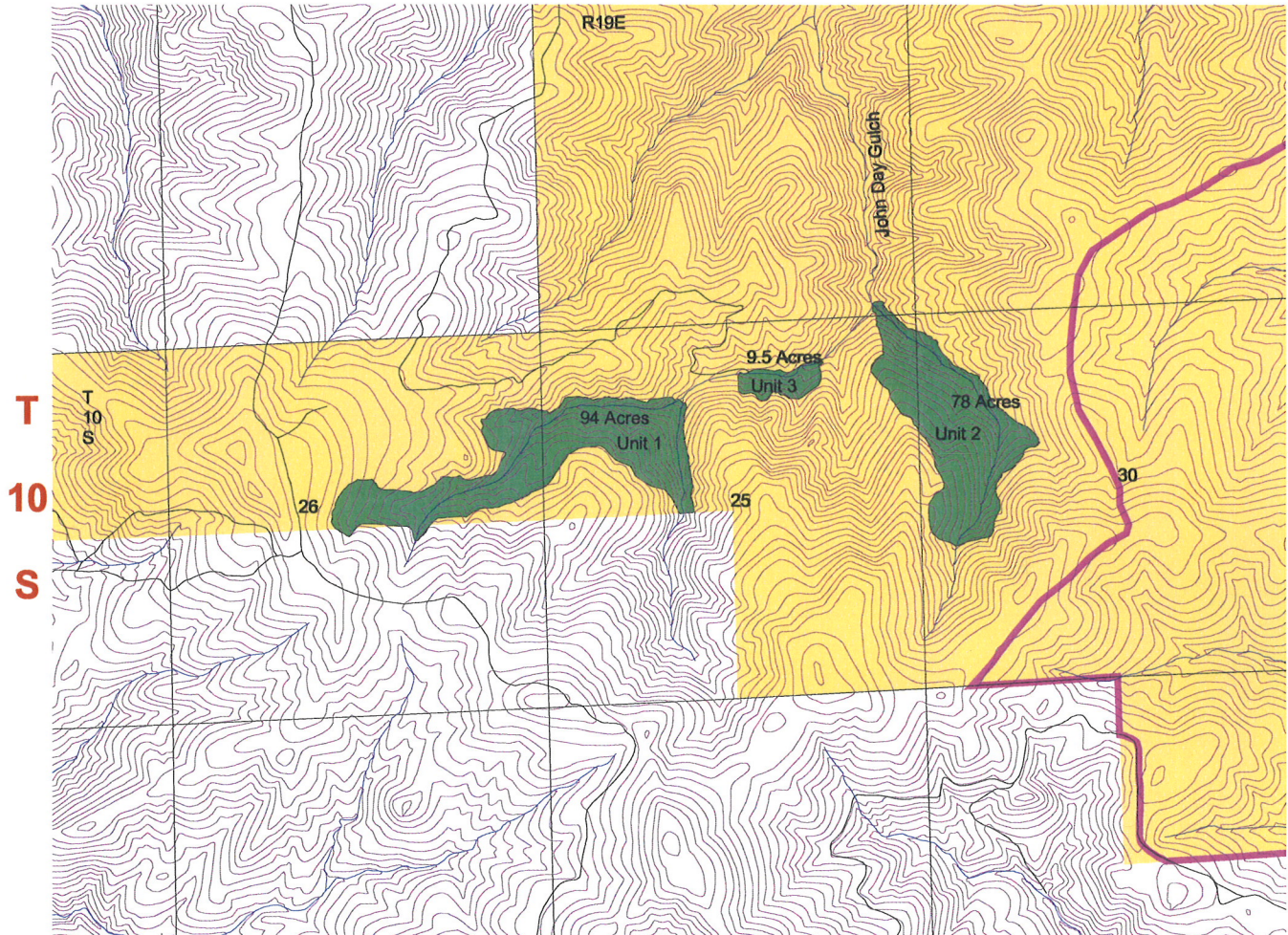
Christina M. Welch Approved By
Tina Welch
Central Oregon Field Manager

Date 7/23/04

Pats Cabin Juniper Cut

R 19 E

R 20 E

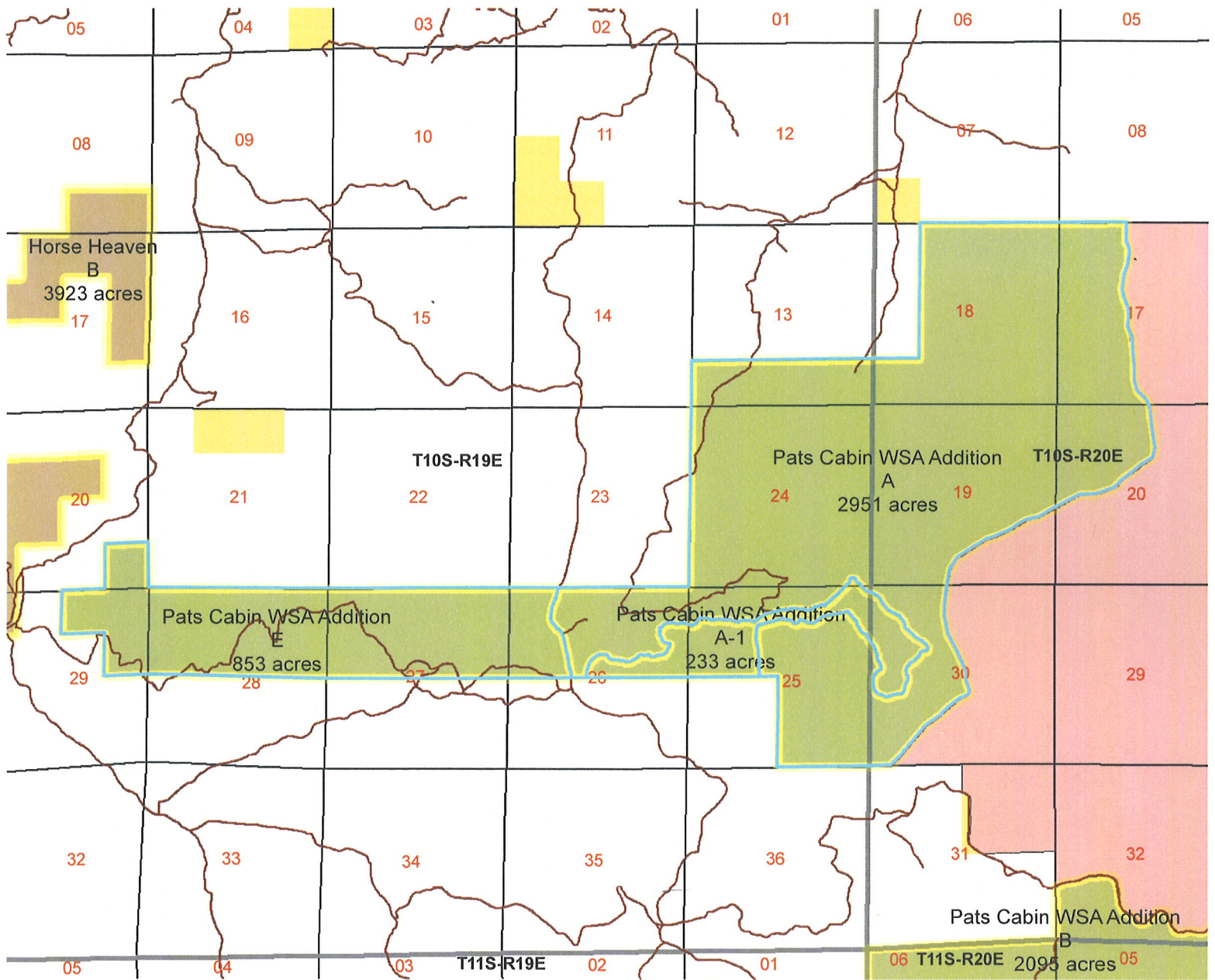


- Streams_old
- Gcdb_sections
- Gtrn
- Contours40ft
- Patsjuoc04finalpoly.shp
- Wsa
- Lli
- Bureau of Land Management
- US Forest Service
- Department of Agriculture
- Bureau of Reclamation
- Corps of Engineers
- National Park Service
- State
- State Park
- Private or Undefined

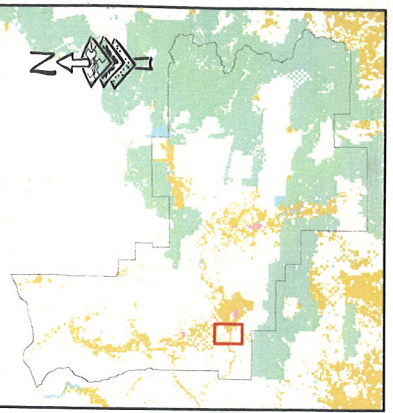
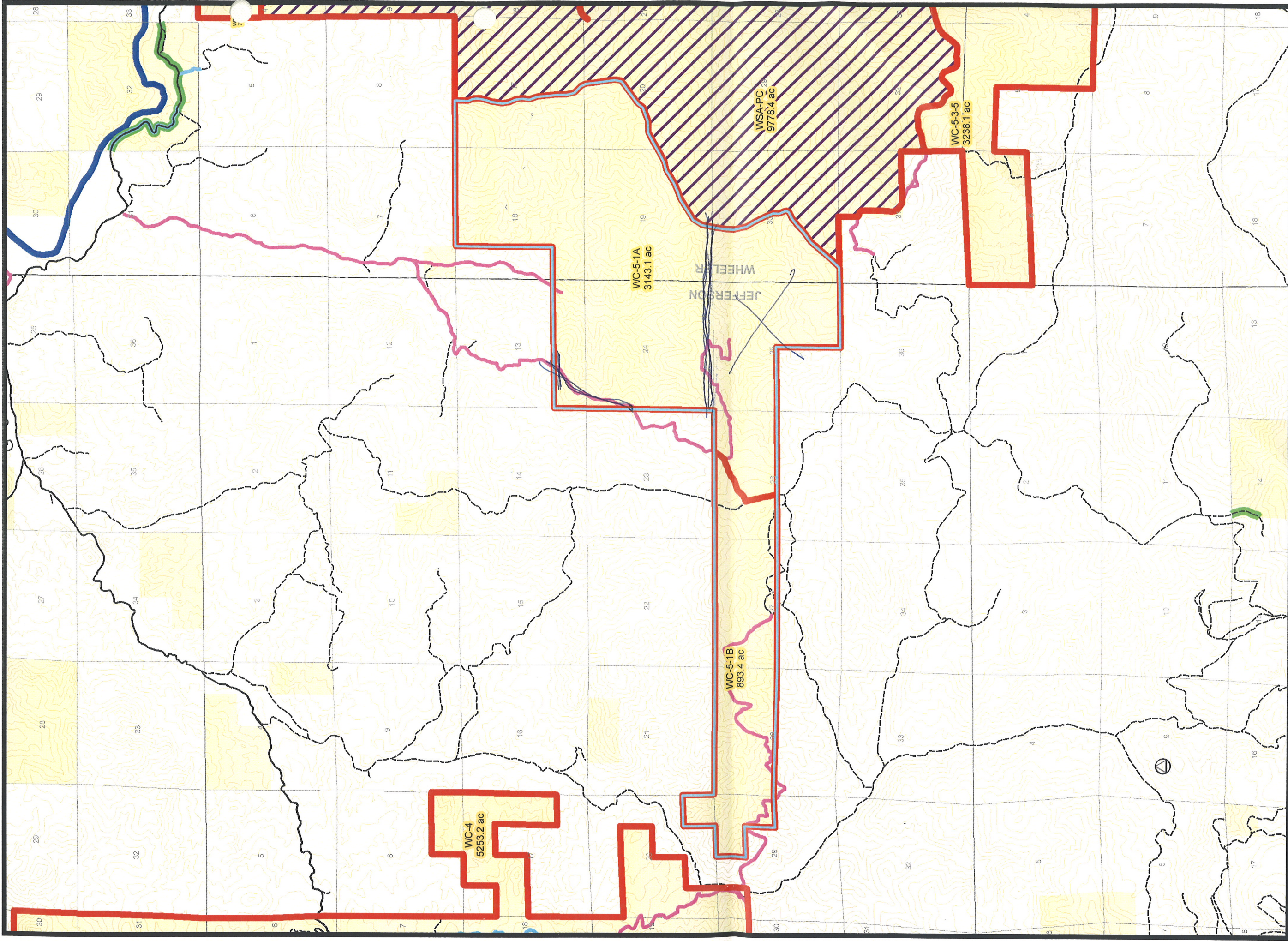
*gisusers/scooke/Fuels
UTM 10 NAD 27*



Note: No warranty is made by the Bureau of Land Management as to the accuracy, reliability or completeness of these data for individual or aggregate use with other data. Original data was compiled from various sources. This information may not meet National Map Accuracy Standards. This product was developed through digital means and may be updated without notification.



Subunits A & E



WC-5-1 WILDERNESS CHARACTER INVENTORY

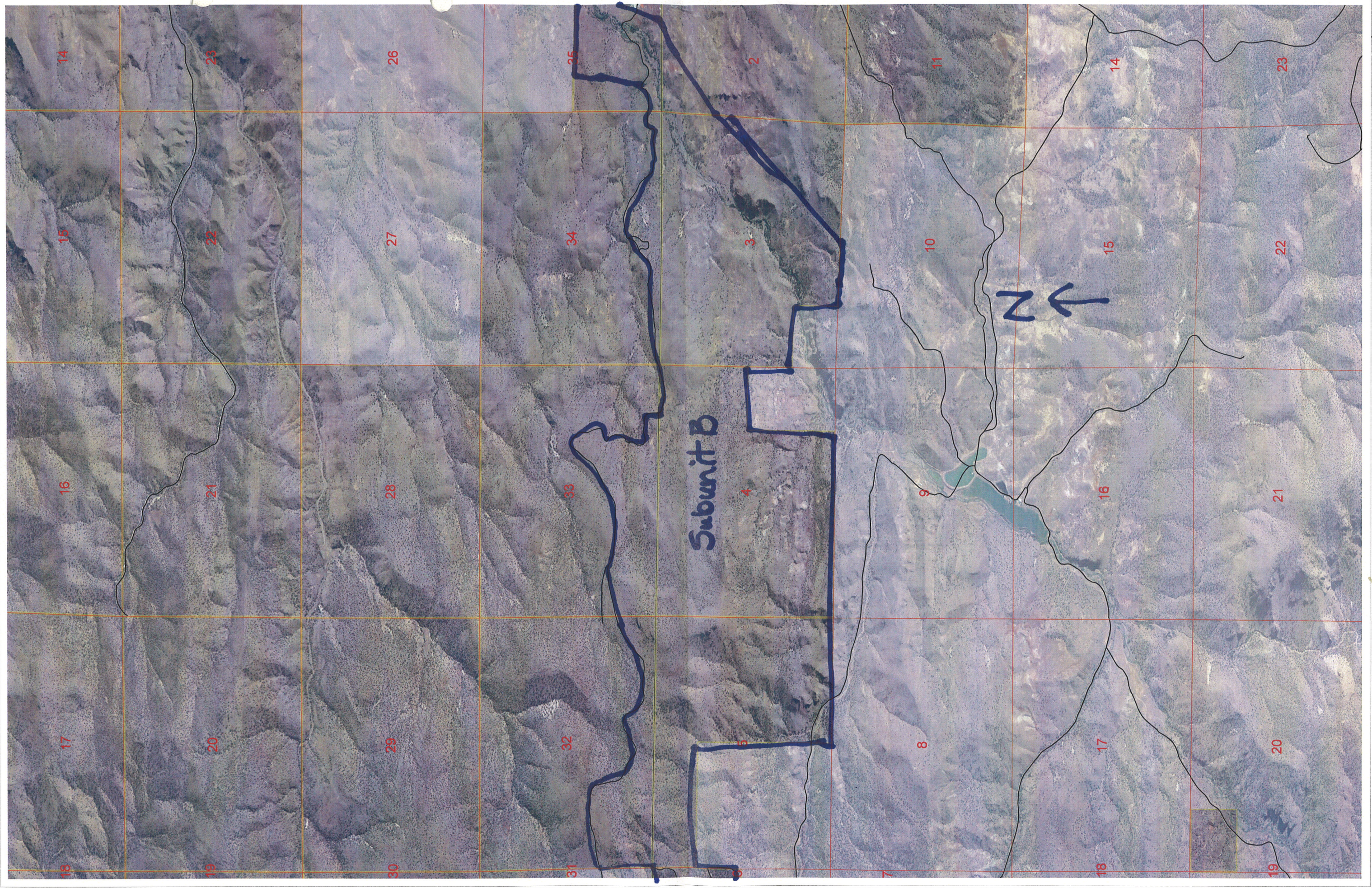
U.S. DEPARTMENT OF THE INTERIOR
Bureau of Land Management
PRINEVILLE DISTRICT
5030 NE Third Street
Prineville, OR 97754
(541) 416-6700

Last Modified: 9/12/2007 1:07:59 PM
No warranty is made by the Bureau of Land Management as to the accuracy, reliability, or completeness of these data for individual or aggregate use. This product information may not meet National Map Accuracy Standards. This product was developed through digital means and may be updated without notification.

Subunits A&E

<ul style="list-style-type: none"> Selected Inventory Unit Inventory Unit Wilderness Study Areas <ul style="list-style-type: none"> BLM US Forest Service National Park Service State Private or Unaffiliated FS roadless areas FS Wilderness 	<ul style="list-style-type: none"> Public Access - Interim Designations <ul style="list-style-type: none"> US, County, State and Local Roads Interim Road Interim Trail To Private Admin Use Only Build New Road BLM Maintained Roads Easement Right of Way Unknown Status Rivers Corrals Mineral Resources Water Points Fences Powerlines Treatments 	<ul style="list-style-type: none"> Rivers Corrals Mineral Resources Water Points Fences Powerlines Treatments
--	--	--

0 0.4 0.8 1.2 1.6 Miles



(Subunit B)- Pat's Cabin South 5-3-5 012 - Pat's Cabin WSA Addition