

UNITED STATES DEPARTMENT OF THE INTERIOR
BUREAU OF LAND MANAGEMENT
Spokane District
Wenatchee Field Office
915 Walla Walla Ave.
Wenatchee, Washington 98801

Sale Name: Sinlahekin Contract Number: OR134-TS-2020-0001
Notice Date: July 20th, 2020

TIMBER SALE NOTICE AND PROSPECTUS

Note: This is a **Sealed Bid** Timber Sale. *There will NOT be any oral Bidding*

THIS IS A WEIGHT SCALE SALE

Note:

Bidding will be restricted to Sawlogs/Ton (Small) Wood!

This prospectus does not contain all contract provisions and exhibits. Contract items listed below are a summary only of certain contract provisions and do not contain the exact wording as shown in the contract. A copy of the timber sale contract, along with all exhibits, is available for inspection at the above office. All bidders should inspect these documents prior to bidding on this sale.

The Bureau of Land Management will offer for sale timber as described below. The right is hereby reserved to waive technical defects in this supplement.

SALE NAME: SINLAHEKIN

100% Tractor

- 1. DATE, PLACE AND TYPE OF SALE:** Sealed bids will be received by the Field Manager or his representative until **4:00 p.m.**, on **Monday, August 10th, 2020** at the Bureau of Land Management's Wenatchee Field Office, 915 Walla Walla St., Wenatchee, Washington. Sealed bids will be opened on **Tuesday, August 11th, 2020** at the Wenatchee Field Office, 915 Walla Walla St, Wenatchee, Washington 98801 . Information on bidding may be obtained **Wednesday, August 12th, 2020**. The high bidder will be notified by phone and mail.

To qualify for sealed bidding, the bidder must submit a bid in a sealed envelope that includes:

- A. Two (2) copies of the bid written on Deposit and Bid for Timber/Vegetative Resource (Form 5440-9) available at the Wenatchee Field Office. No bids for less than the advertised appraised price on a unit basis per product or species and total price will be considered.**
- B. A bid deposit of \$1700.00 in the form of cash, money order or bank draft, cashier's or certified check (made payable to the U.S. Department of the Interior - BLM), bid bonds of corporate surety shown on the approved list of the United States Treasury Department or an irrevocable letter of credit. (Personal checks will not be accepted.)**
- C. The sealed envelope must be clearly marked that it is a "Bid for Timber", together with the identifying sale name (Sinlahekin) and contract number (OR134-TS-2020-0001).**

D. Bid must be accompanied by a properly executed form 5430-11 (Independent price determination certificate).

Bidding will be restricted to those persons complying with Instructions to Bidders (Form No. 5440-9).

All timber offered for sale hereunder is restricted from export from the United States in the form of unprocessed timber.

2. **LOCATION OF TIMBER:** Okanogan County, Washington. T. 38 N., R.25 E., portions of Sections 14, 15, and 23. (Exhibit A). The total contract area is 120 acres. Slopes range from 0 to 35+%. Average elevations range from 2,200 feet to 2,800 feet.

3. **TIMBER TYPE, ESTIMATED VOLUME, AND APPRAISED VALUES:**

Product	Estimated Volume (TONS)****	Estimated Volume (MBF)	Appraised Price (\$/Ton)	Total Appraised Price
Sawlogs (*) & Ton (Small) Wood (**)	2586	446	\$6.45	\$16,667.50
Other Products (***)			\$1.00	
TOTALS	2586	446		\$16,667.50

(*) Sawlogs: Logs that are greater >5” diameter on the small end

(**) Ton (Small) Wood: Logs <5” diameter on the small end

(***) Other Products: Material that does not meet sawlog or ton (small) wood specifications (e.g. slash)

(****) A Conversion rate of 5.8 tons/mbf was used.

4. **METHOD OF MEASUREMENT:**

THIS IS A WEIGHT SCALE SALE Payment for timber will be based on weight scale. The Purchaser shall weigh all loads on scales currently certified by the State in which weighed. Each load shall be weighed as a single unit with the gross and tare weights stamped and recorded by an automatic recording device on the scales.

The Purchaser will be required to make payment for merchantable timber not removed from the sale area based on the amount bid or appraised for each species. Merchantable timber not removed from the sale area will be scaled by board feet (BF) and the BF scale will then be converted to weight.

The volumes listed are estimates only. The volume has been determined by individual tree measurement from a sample cruise.

Cruise information: Timber volumes were based on a 3P cruise. Trees numbered in blue are 3P sample trees. Trees to be retained are painted in orange.

Sale Statistics – See Attachment

5. **CUTTING AND YARDING:**

- Unit boundaries are designated with blue and orange flagging and Timber Cutting Boundary Posters.
- Trees to be retained are painted in orange.

6. **DURATION OF CONTRACT:**

Duration of the contract will be 24 months for cutting and removal of timber. Extensions will not ordinarily be granted.

7. ACCESS, ROAD CONSTRUCTION, and ROAD RECLAMATION:

SINLAHEKIN Site Visit Description

Access to the North portion of the sale

From Loomis WA, travel south on the Sinlahekin Road Road for approx. 2.0 Miles to the turnoff for Cecil Creek Rd., continue for approx.1.0 miles to a Y in the road, turn right, travel approximately 0.5 mi.

Access to the South portion of the sale

From Loomis WA, travel south on the Sinlahekin Road for approx. 2.0 Miles to the turnoff for Cecil Creek Rd., continue for approx.1.0 miles to a Y in the road, turn left, travel approximately 0.25 mi.

Contact Mark Williams 509-665-2100

All constructed, renovated, disturbed roads and landing areas within the timber sale unit will be seeded with a certified weed-free grass/forb seed mixture approved by the BLM.

8. SLASH DISPOSAL:

Tops must be yarded to the landings. Broken tops left in the unit must be lopped and scattered.

The Purchaser will be required to burn piled slash at landings and along all roads. The Purchaser will be required to prepare a burn plan acceptable to the Authorized Officer prior to burning. The Purchaser has the option to buy out burning requirements by paying a fee of \$1.00/Ton for sawlog and ton (small) wood removed from the contract area. Note: That the amount of contributed monies is in addition to the total amount bid for timber (an allowance has been made in the appraisal for this fee).

9. BONDS:

See Form 5440-9, Deposit and Bid for Timber, Items 7and 10 for information on bid deposit and bonds.

In addition to the basic performance bond required for the purchase of timber, this basic performance bond will be increased to cover the following items: weed control and pile burning (if the Purchaser elects to buy-out of pile burning).

10. SPECIAL CONTRACT PROVISIONS:

The contract will contain special provisions regarding logging practices, erosion control, slash disposal, fire protection and road construction. Bidders should take note of the following items that are part of the contract. The exact clauses as they will appear in the contract may be reviewed at the Wenatchee Field Office.

- A. All skid trails and collector trails accessing the harvest area from existing roads shall be made impassable to ATV's and UTV's.

- B. The above contributed monies are based on \$/Ton and is added to the amount bid (or appraised price) for timber. (e.g. Bid price for Sawlogs and Small Wood was \$7.38/Ton). The Purchaser may elect to buy-out of burning. The total/Ton for contributed monies is \$1.00 /Ton (for burning). The total due and payable to the Government would be \$7.45/Ton for sawlogs and small wood.
- C. The use of Feller Bunchers is permitted on slopes up to 45%. Forwarders are permitted in the areas designated for Tractor Skidding. The use of intermediate supports will be required throughout the sale area.

11. LOG EXPORT AND SUBSTITUTION RESTRICTIONS - All timber sold to the Purchaser under the terms of the contract, except exempted species, is restricted from export under the United States in the form of unprocessed timber and is prohibited from use as a substitute for exported private timber.

The BLM has revised the log export restrictions special provision to reduce the log branding and painting requirements. The new requirements include branding of one end of all logs with a scaling diameter of over 10 inches. All loads of 11 logs or more, regardless of the diameter of the logs, will have a minimum of 10 logs branded on one end. All logs will be branded on loads of 10 logs or less. One end of all branded logs will be marked with yellow paint. At the discretion of the Contracting Officer, the Purchaser may be required to brand and paint all logs. The Purchaser shall bear any increased costs for log branding and painting.

CUTTING AREA – There are two (2) partial cut units containing: 120 acres of tractor yarding.

CUTTING TIME - Contract duration will be thirty-six (24) months for cutting and removal of timber and completion of slash reduction activities.

ACCESS - Access to the sale area is available via State and County Roads.

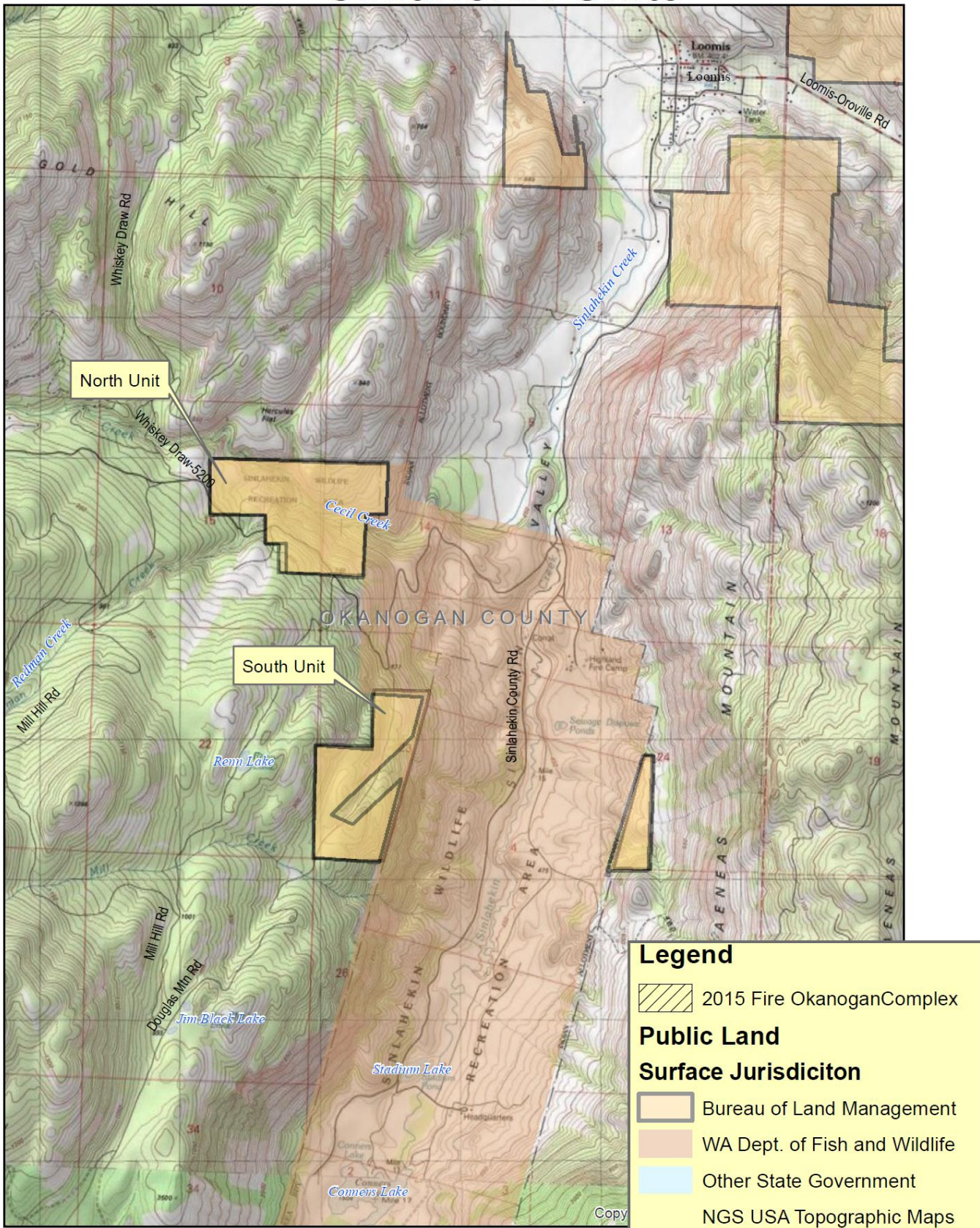
Species	# Trees	Weighted Ave DBH	Gross Sawlog Volume (MBF)	Net Sawlog Volume (MBF)	Gross Sawlog Volume (TONS)	Net Sawlog Volume (Tons)
WL	27	12.1	2	2	12	12
DF	4685	12.0	405	377	2349	2187
PP	781	12.8	71	68	412	394
TOTALS	5493		478	447	2773	2593
AVERAGE		12.0				

Species	Average Tree Gross Volume (BF)	Average Tree Net Volume (BF)
WL	74	74
DF	86	80
PP	92	85
AVERAGE	87	81

Attachments:

- Form 5440-9 Deposit and Bid for Timber/Vegetative Resource
- Form 1140-4 Notice of Requirement for Certification of Non-segregated Facilities
- Form 5430-1 Self Certification Clause
- Form 5430-11 (Independent price determination certificate).

Sinlahekin Units



No warranty is made by the Bureau of Land Management as to the accuracy, reliability, or completeness of these data for individual or aggregate use with other data. Original data were compiled from various sources and may be updated without notification.

