

Year: 2020

Inventory Unit Number/Name: OR-015-164; CA-020-1004/
Twelvemile – Rock Creek*

FORM 1

**DOCUMENTATION OF BLM WILDERNESS INVENTORY
FINDINGS ON RECORD**

1. Is there existing BLM wilderness inventory information on all or part of this area?

No Yes (if more than one unit is within the area, list the names/numbers of those units):

a) Inventory Source:

- a. Wilderness Inventory – Final Intensive Inventory Decisions; USDI BLM - Oregon and Washington, November 1980.
- b. Final Intensive Inventory, Public Lands Administered by BLM California Outside the California Desert Conservation Area Wilderness, December 1979.

b) Inventory Unit Number(s)/ Name(s): 1-164/ Snuff; CA-020-1004/
Twelvemile Creek

c) Map Name(s)/Number(s): Intensive Wilderness Inventory - Final Decisions; USDI BLM - Oregon, November 1980.

d) BLM District(s)/Field Office(s): Lakeview District, Lakeview Resource Area; Northern California District, Applegate Field Office.

*Note: Unit name was changed to better reflect values and features found within the unit, and to reduce confusion of similarly named inventory units.

2. BLM Inventory Findings on Record:

Existing inventory information regarding wilderness characteristics (if more than one BLM inventory unit is associated with the area, list each unit and answer each question individually for each inventory unit):

Unit #	Size (historic acres)	Natural Condition? Y/N	Outstanding Solitude? Y/N	Outstanding Primitive & Unconfined Recreation? Y/N	Supplemental Values? Y/N
(OR) 1-164/ CA-20-1004	16,130	Y	N	N	N
(OR) 1-164/ CA-20-1004*	15,980	Y	N	N	N/A

* The inventory of this unit was updated in 2009. However, due to a State Office-sponsored Wilderness Inventory Consistency Evaluation and subsequent guidance, the 2009 inventory analysis and findings are being replaced by this current 2020 inventory review. Documentation of the 2009 inventory can be found in the wilderness inventory project record.

Summarize any known primary reasons for prior inventory findings listed in this table:

Historic Unit 1-164 consisted of low rolling hills. The Fifteen Mile Creek drainage crossed the northwest portion of the unit. Vegetation was sagebrush, juniper and a few scattered pines in the north. The majority of the unit retained a mostly natural condition. Existing man-created impacts included "ways" and scattered, low-profiled, pit reservoirs. The impacts of man were found to be substantially unnoticeable. The unit was also found to lack outstanding opportunities for solitude due to close access of a major road, small size and general exposure across the unit. This unit was located in an active hunting area, and there were some scenic and hiking values along Fifteen Mile Creek. The unit was ultimately found to lack outstanding opportunities for primitive or unconfined recreation, as potential in the unit was limited. No supplemental values were recognized in the unit.

FORM 2

**DOCUMENTATION OF CURRENT WILDERNESS INVENTORY
CONDITIONS**

Unit Number/Name: OR-015-164; CA-020-1004/ Twelvemile – Rock Creek

(1) Is the unit of sufficient size? Yes X No _____

Between 2003 and 2016, BLM staff conducted field inventory in the area as part of a process to update its road and wilderness inventories and to gather additional information to supplement ONDA's citizen wilderness inventory information that was submitted by the Oregon Natural Desert Association in 2005 and 2015. In December 2018, the BLM received an additional citizen inventory from the Coleman Valley Ranch. Using both ONDA the submitted inventories mentioned above and BLM photos, field logs, and staff field knowledge, the BLM completed route analysis within the area in 2017 and revised this information in 2020 based on new citizen submitted information. This Fieldwork included photo documentation of the boundary and interior routes and a re-evaluation of wilderness characteristics for this area.

The BLM determined that the inventory unit is bounded by County Road 3-14 and Ruby Pipeline right-of-ways, as well as private lands to the north; a Ruby Pipeline right-of-way to the east; a right-of-way for Barrel Springs County Road, unnumbered routes, and private lands to the south; a right-of-way for County Road 1 and private lands to the west. BLM interim numbered road 7112-BA was also cherry stemmed for access to private property near the northeast boundary.

Thus, based on these boundary and road determinations, the BLM found the Twelvemile – Rock Creek inventory unit to exceed the minimum size criteria at approximately 15,675 acres of BLM-administered lands.

Additional background on the process that the BLM followed during this evaluation is contained in the document, *Wilderness Inventory Maintenance Process for the Lakeview Resource Area, BLM* and in the *Route Analysis Forms*. Both documents can be found in the wilderness inventory file.

DESCRIPTION OF CURRENT CONDITIONS:

This unit is located approximately 13 miles southwest of Adel, Oregon, and about 10 miles northeast of Ft. Bidwell, California. The unit is approximately 8 miles long by 4 miles wide, with two private inholdings totaling approximately 250 acres. Topographically the unit is dominated by several main drainages spread across the unit including: Twelvemile Creek (4 miles long, 300-600 ft. deep); Fifteenmile Creek (1 mile long, 125-225 ft. deep), Elevenmile Creek (0.5 miles long, 5-10 ft. deep), Cow Head Slough (3 miles long, 50-200 ft. deep), Rock Creek (7.5 miles long, 35-285 ft. deep) and an unnamed drainage (5.5 miles long, 10-50 ft. deep). The unit also consists of several small to moderate rims and buttes (50-325 ft. high), Twin Lakes depressed lakebeds (25 ft. deep), and rolling terrain. Vegetatively, approximately 9,500 acres of the unit is covered in moderate to high-density western juniper stands, with old-growth characteristics. The remaining vegetation is scattered juniper, sagebrush, rabbit brush, and grass.

(2) Is the unit in a natural condition? Yes No N/A

In 1979/1980, historic Unit 1-164/CA-020-1004 contained a few “ways” and scattered, low-profiled, pit reservoirs. The impacts of man were found to be substantially unnoticeable.

The unit currently contains the following man-made developments/disturbances: 1,478 of prescribed burns/mechanical fuel treatments, 64 acres of chemical treatments, 6.25 miles of motorized routes, 0.5 miles of closed routes, 15.5 miles of fence lines, five reservoirs, three waterholes, and one rehabbed mineral site.

Presently, almost four decades after the original inventory, these developments are weathered and grown over with herbaceous grasses, sagebrush, and juniper. As a result, developments now fade into the background of the unit and are largely only noticeable at a close distance (1/4th mile or less) and are thus substantially unnoticeable from further distances. The topography and vegetation of the area also plays a large role in screening disturbances and man-made developments. Furthermore, many of the disturbances are located near the perimeter of the unit and, as such, have a small area of influence.

Based on a review of all the available information including photos, staff knowledge, and field review, the BLM concluded that the unit appears in a natural condition where the imprints of man are substantially unnoticeable.

(3) Does the unit (or the remainder of the unit if a portion has been excluded due to unnaturalness and the remainder is of sufficient size) have outstanding opportunities for solitude? Yes No N/A

In 1979/1980, historic Unit 1-164/CA-020-1004 was found to lack outstanding opportunities for solitude due to close access of a major road, small size and general exposure across the unit.

The BLM determined that there are several outstanding opportunities for solitude across the unit due to topographic and vegetative screening. Topographically the unit is dominated by several main drainages spread across the unit including: Twelvemile Creek (one miles long, 300-600 ft. deep); Fifteenmile Creek (one mile long, 125-225 ft. deep), Elevenmile Creek (0.5 miles long, 5-10 ft. deep), Cow Head Slough (three miles long, 50-200 ft. deep), Rock Creek (7.5 miles long, 35-285 ft. deep) and an unnamed drainage (5.5 miles long, 10-50 ft. deep). The unit also consists of several small to moderate rims and buttes (50-325 ft. high), Twin Lakes depressed lakebeds (25 ft. deep), and rolling terrain. Vegetatively, western juniper stands have greatly expanded in height, width, and density. Approximately 9,500 acres of the unit is covered in moderate to high-density western juniper stands, with old-growth characteristics. Due to the above-described compartmentalized topography and vegetative conditions within the unit, one would easily be able to avoid the sights and sounds of others within the unit.

Thus, for the reasons specified above and based on a review of all the available information including (BLM and citizen provided) photos, staff knowledge, and field review, the BLM concluded the Twelvemile – Rock Creek inventory unit possesses outstanding opportunities for solitude.

(4) Does the unit (or the remainder of the unit if a portion has been excluded due to unnaturalness and the remainder is of sufficient size) have outstanding opportunities for primitive and unconfined recreation? Yes No N/A

In 1979/1980, historic Unit 1-164/CA-020-1004 was found to possess opportunities for hunting and hiking/ scenic values along Fifteen Mile Creek. However, the unit was ultimately found to lack outstanding opportunities for primitive or unconfined recreation.

The BLM finds the combination and diversity of hiking, horseback riding, backpacking, camping, wildlife observation, exploration, scenery, photography, stargazing, trapping, hunting, and fishing are exceptional. The BLM determined that options for exploration of the units many drainages (Twelvemile, Fifteenmile, Elevenmile, Rock, and Cow Head Slough) and fishing along Twelvemile Creek's

recommended suitable Wild and Scenic River section represent unique opportunities for primitive and unconfined recreation.

(5) Does the unit have supplemental values? Yes No N/A

The BLM found the unit to possess archaeological and geological values as well as the presence of warner sucker, redband trout, Cowhead Slough tui chub, mule deer, pronghorn antelope, California bighorn sheep, bald eagle, and sage-grouse habitat.

In 2003, about 854 acres of the Twelvemile Creek corridor in Oregon was recommended suitable as a Wild and Scenic River within the Lakeview RMP/ROD. In 2008, an additional 457 acres of the creek corridor was recommended suitable within the Surprise RMP/ROD. The outstandingly remarkable values found within this corridor included the presence of fish habitat and populations (Warner suckers) (see Draft Lakeview RMP/EIS, Appendix J2, pages A-266 to A-270; 2001). Congress has yet to act upon this recommendation.

Summary of Findings and Conclusion

Unit Number and Name: OR-015-164; CA-020-1004/ Twelvemile - Rock Creek

Summary Results of Analysis:

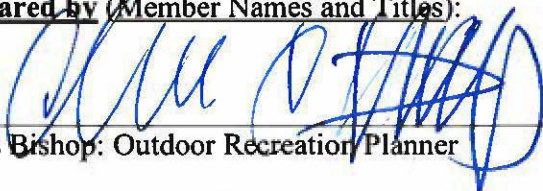
- 1. Does the area meet the size requirements? X Yes No
- 2. Does the area appear to be natural? X Yes No
- 3. Does the area offer outstanding opportunities for solitude or a primitive and unconfined type of recreation? X Yes No NA
- 4. Does the area have supplemental values? X Yes No NA

Conclusion (Check One):

 X The area- or a portion of the area- has wilderness character:
(items 1, 2 and 3 must be checked "yes").

 The area does not have wilderness character: *(any of items 1, 2 and 3 are checked "no").*

Prepared by (Member Names and Titles):


Chris Bishop: Outdoor Recreation Planner

 3/2/20
Date

 Retired
Rodger Farschon: Ecologist

Date

Approved by:

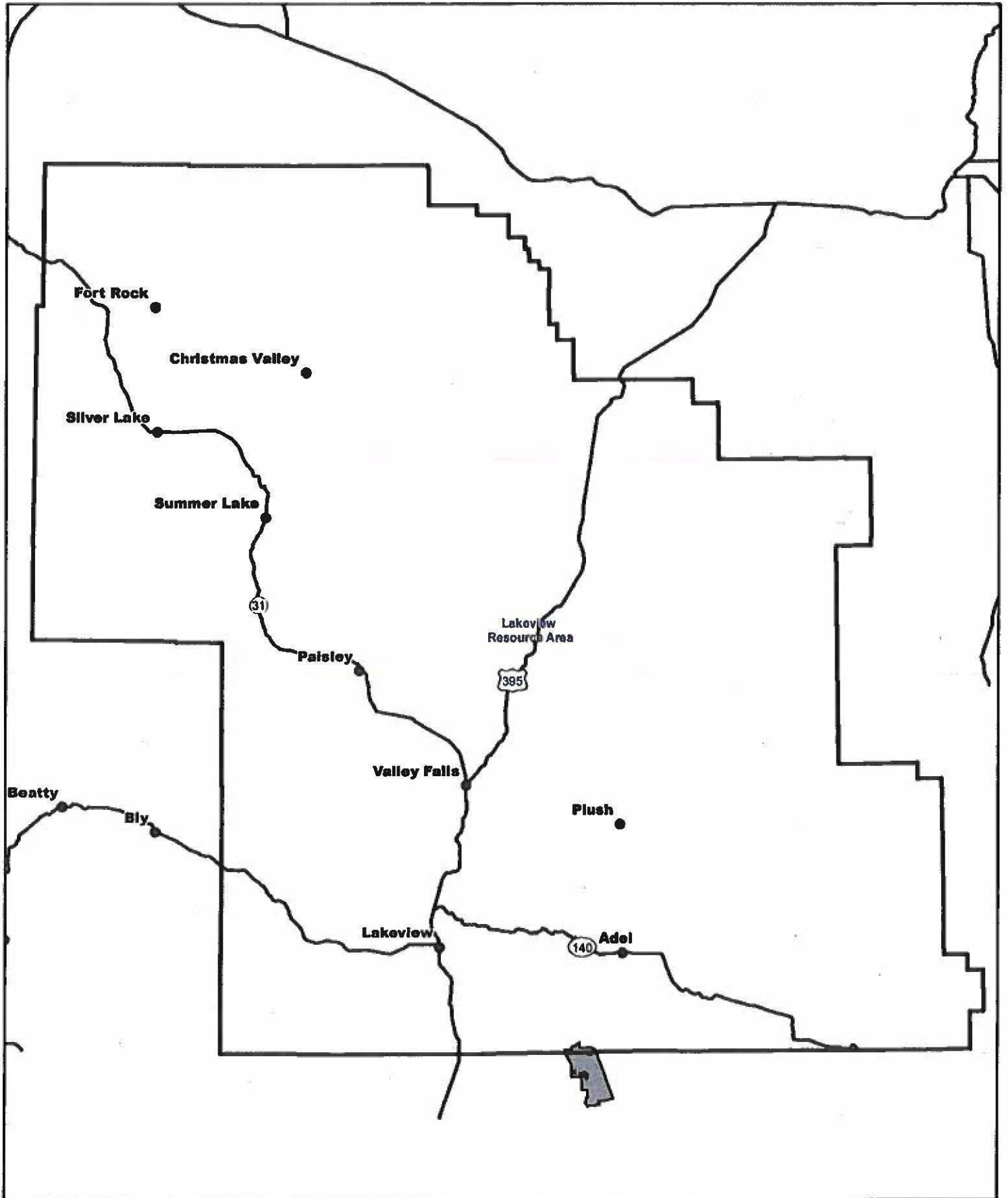

Jami Ludwig: Acting Lakeview Field Mgr.

 3/2/20
Date


Craig R. Drake: Applegate Field Mgr.


 3/2/20
Date

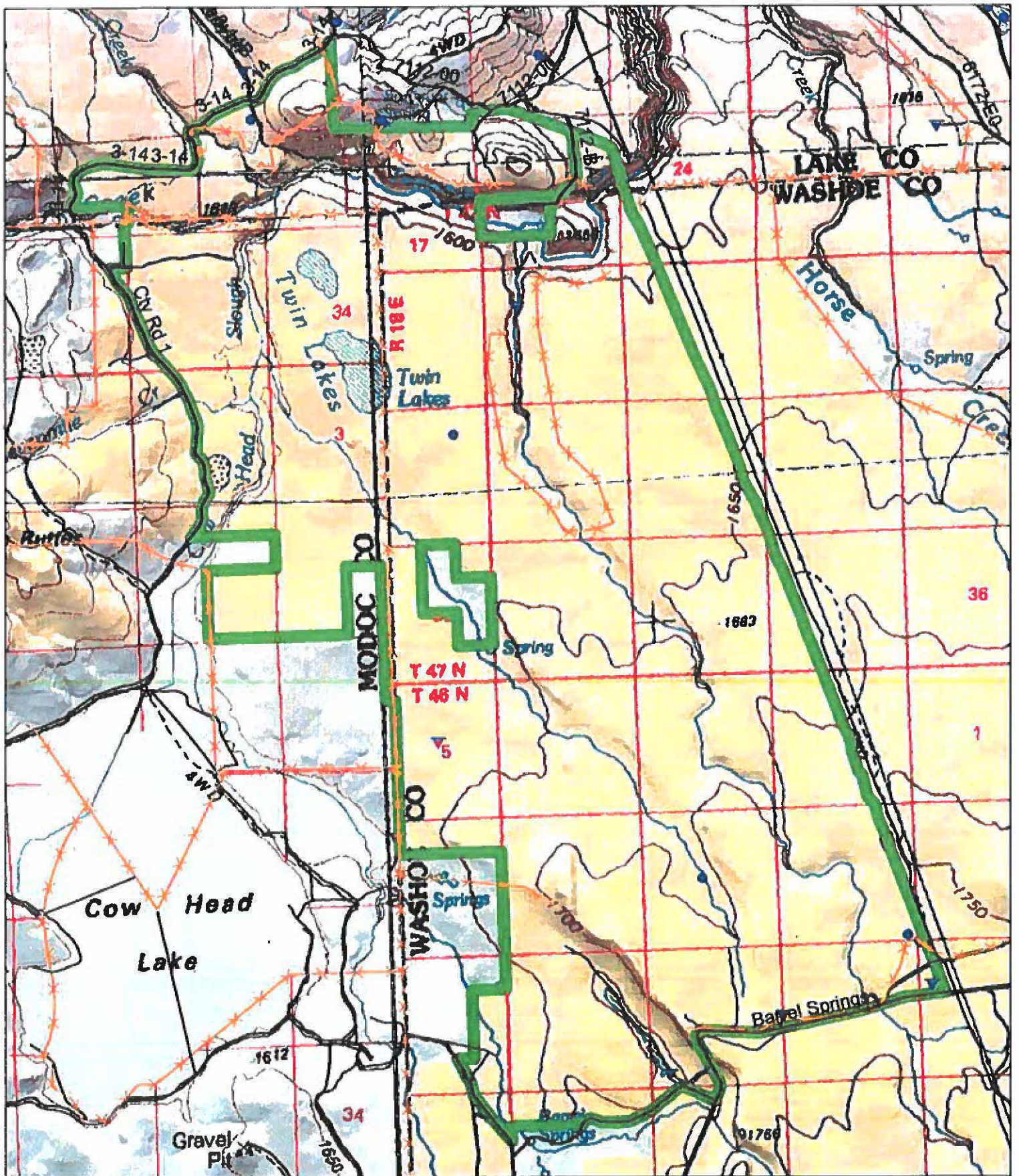
This form documents information that constitutes an inventory finding on wilderness characteristics. It does not represent a formal land use allocation or a final agency decision subject to administrative remedies under 43 CFR parts either 4 or 1610.5-2.



 Wilderness Character Inventory Unit



 No warranty is made by the Bureau of Land Management as to the accuracy, reliability, or completeness of these data for individual or aggregate use with other data. Original data were extracted from various sources. Data interpretation may not have followed the Bureau's standards. This product was developed through digital means and may be updated without notification.



Wilderness Character Inventory Unit Ownership

- █ Bureau of Land Management
- █ U.S. Forest Service
- █ State
- █ Private/Unknown

Roads/Trails

- Motorized Routes
- Closed Routes
- Recreating Routes
- Motorized and Non-Motorized Trails
- Interim Routes

Pipelines and Ditches

- Ditch
- Water Pipeline
- Guzzler
- x Fences

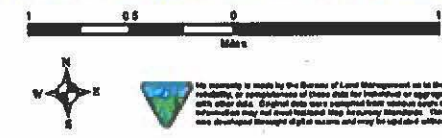
Water Developments

- ▬ Dam
- ▴ Reservoir
- L Spring Development
- Trough
- Weir Diversion

■ Water Tank

● Waterhole

⊙ Well - Water



No warranty is made by the Bureau of Land Management as to the accuracy, reliability, or completeness of these data for individual or aggregate use with other data. Original data were supplied from various sources. This information may not meet traditional map-making standards. The data were developed through a grant process and may be updated without notice.