

Year: 2020 Inventory Unit Number/Name: OR-015-157; CA-020-1005/  
Twelvemile - Horse Creek\*

**FORM 1**

**DOCUMENTATION OF BLM WILDERNESS INVENTORY  
 FINDINGS ON RECORD**

**1. Is there existing BLM wilderness inventory information on all or part of this area?**

No  Yes  (if more than one unit is within the area, list the names/numbers of those units):

**a) Inventory Source:**

- a. Wilderness Inventory – Final Intensive Inventory Decisions; USDI BLM - Oregon and Washington, November 1980.
- b. Final Intensive Inventory, Public Lands Administered by BLM California Outside the California Desert Conservation Area Wilderness, December 1979.

**b) Inventory Unit Number(s)/ Name(s):** 1-157/ Coleman Valley West;  
 CA-020-1005/ Coleman Ranch

**c) Map Name(s)/Number(s):** Intensive Wilderness Inventory - Final Decisions;  
 USDI BLM - Oregon, November 1980.

**d) BLM District(s)/Field Office(s):** Lakeview District, Lakeview Resource Area; Northern California District, Applegate Field Office.

\*Note: Unit name was changed to better reflect values and features found within the unit, and to reduce confusion of similarly named inventory units.

**2. BLM Inventory Findings on Record:**

Existing inventory information regarding wilderness characteristics (if more than one BLM inventory unit is associated with the area, list each unit and answer each question individually for each inventory unit):

Unit #	Size (historic acres)	Natural Condition? Y/N	Outstanding Solitude? Y/N	Outstanding Primitive & Unconfined Recreation? Y/N	Supplemental Values? Y/N
(OR) 1-157	10,000	N	N	N	Unknown
CA-020-1005	13,005	Y	N	N	Unknown
(OR) 1-157/ CA-020-1005*	26,335	Y	N	N	N/A

\* The inventory of this unit was updated in 2009. However, due to a State Office-sponsored Wilderness Inventory Consistency Evaluation and subsequent guidance, the 2009 inventory analysis and findings are being replaced by this current 2018 inventory review. Documentation of the 2009 inventory can be found in the wilderness inventory project record.

***Summarize any known primary reasons for prior inventory findings listed in this table:***

The west side of historic Unit 1-157/ CA-020-1005 was described as a low plateau dissected by Twelvemile and Horse Creeks. The remainder of the unit rose sharply in elevation east of the Horse Creek drainage. The rest of the unit contained low, rolling hills with a few rocks, ridgelines, and shallow drainages. A small mountain range extended from the northeast arm in Oregon south a few miles into Nevada. The dominant vegetation was sagebrush and grass, scattered juniper, and isolated stands of ponderosa pine. Due to the overall impact of reservoir developments, spring developments, and roads, the northern four miles of the northeast portion of the unit did not appear to be primarily affected by the forces of nature. This portion contained three developed springs and very noticeable roads leading to Terry Spring and Cahill Reservoir. Two small reservoirs were located in the north end. The northwest arm of the unit was very narrow and was significantly affected by the 500-kV power line along the west boundary. The southern portion was affected to a minor degree by a few miles of "ways" and several pit reservoirs, but it remained generally natural in appearance. The unit offered only marginal opportunities to avoid the presence of others in the unit due to the generally open terrain, broad flat areas, and little vegetative screening. The small size of the area found to be mostly in a natural condition further restricted opportunities for solitude. The stream drainages in the unit were also found to offer minor areas of solitude. The unit had potential for hunting and wildlife observation with limited potential as a day use area. The limited size of the area found to be mostly in a natural condition and the absence of unique or interesting terrain and/or vegetation limited the recreational attractiveness of the unit. It did not offer any outstanding recreation opportunities for primitive and unconfined recreation. The unit may have contained some archaeological values, though none were known specifically.

**FORM 2**

**DOCUMENTATION OF CURRENT WILDERNESS INVENTORY  
CONDITIONS**

**Unit Number/Name:** OR-015-157; CA-020-1005/ Twelvemile - Horse Creek

**(1) Is the unit of sufficient size?** Yes  X  No      

Between 2003 and 2016, BLM staff conducted field inventory in the area as part of a process to update its road and wilderness inventories and to gather additional information to supplement citizen wilderness inventory information that was submitted by the Oregon Natural Desert Association in 2005 and 2015. In December

2018, the BLM received an additional citizen inventory from the Coleman Valley Ranch. Using the submitted citizen inventories mentioned above and BLM photos, field logs, and staff field knowledge, the BLM completed route analysis within the area in 2017 and revised this information in 2020 based on new citizen submitted information. Fieldwork included photo documentation of the boundary and interior routes and a re-evaluation of wilderness characteristics for this area.

The BLM determined that the inventory unit is bounded by BLM Roads 6172-00, 6172-E0, and private lands to the north; BLM interim numbered road 6172-G0, unnumbered roads, and private lands to the east and south; and right-of-ways for a Bonneville Power Association (BPA) power line and access routes (BLM interim numbered road 7112-K0 and an unnumbered road) to the west. BLM Road 6172-C0 and BLM interim numbered roads 6172 M0, and 6172-EA were cherry stemmed for access to private property along the northern boundary.

Thus, based on these boundary and road determinations, the BLM found the Twelvemile - Horse Creek inventory unit to exceed the minimum size criteria at approximately 24,081 acres of BLM-administered lands.

Additional background on the process that the BLM followed during this evaluation is contained in the document, *Wilderness Inventory Maintenance Process for the Lakeview Resource Area, BLM* and in the *Route Analysis Forms*. Both documents can be found in the wilderness inventory file.

## **DESCRIPTION OF CURRENT CONDITIONS:**

The inventory unit is located about 12 miles south of Adel, Oregon, and about 10 miles northeast of Ft. Bidwell, California. The unit is approximately 10 miles long by 7.5 miles wide, with nine inholdings totaling 1,235 acres. Topographically the unit is very diverse numerous points, ridges, buttes, rims, canyons, and drainages. The unit ranges in elevation from 4,495 ft. to 7,025 feet. The unit is dominated by a 9.5 mile broken rim (500-1,950 ft. high) running north to south along the eastern boundary and a central ridge broken ridge (350-1,100 ft. high) running 4.5 miles north to south through the central portion of the unit. The Eastern third of the unit is comprised of a lowland rolling terrain with small to moderate rims and buttes and two main drainages. Twelvemile Creek runs approximately 3.5 miles (300-600 ft. deep) in the northwest corner of the unit and Horse Creek runs approximately 5 miles (75-400 ft. deep) through the western third of the area. Vegetatively, approximately 16,500 acres of the unit is covered in moderate to high-density western juniper stands, with old-growth characteristics. The remaining vegetation is scattered juniper, sagebrush, rabbit brush, and grass. Wildfires burned approximately 172 acres in the northeast area of the unit in 1985.

**(2) Is the unit in a natural condition?** Yes  No  N/A

In 1979/1980, the northern four miles of the northeast portion of historic Unit 1-157/CA-020-1005 did not appear to be primarily affected by the forces of nature due to the overall impact of reservoir developments, spring developments, and roads. This portion also contained three developed springs and very noticeable roads leading to Terry Spring and Cahill Reservoir. Two small reservoirs were located in the north end. The northwest arm of the unit was very narrow, and was significantly affected by the 500-kV power line along the west boundary. The southern portion was affected to a minor degree by a few miles of "ways" and several pit reservoirs, but it remained generally natural in appearance.

The unit currently contains the following man-made developments/disturbances: 172 acres of wildfire, 45 acres of prescribed burns/mechanical fuel treatments, 12 acres of chemical treatments, less than one acre of mining disturbances, 19 miles of fence lines, 16.5 miles of motorized routes, seven developed springs (less than 0.5 miles of pipelines), seven waterholes, three reservoirs, and five troughs.

Presently, almost 4 decades after the original inventory, these developments are weathered and grown over with herbaceous grasses, sagebrush, and juniper. As a result, developments now fade into the background of the unit and are largely only noticeable at a close distance (1/4<sup>th</sup> mile or less) and are thus substantially unnoticeable from further distances. The topography and vegetation of the area also plays a large role in screening disturbances and man-made developments. Furthermore, many of the disturbances are located near the perimeter of the unit and, as such, have a small area of influence. Areas that were allowed to revegetate naturally after fire have been invaded by rabbit/ sagebrush and have returned to a natural, post fire, appearing condition.

Based on a review of all the available information including photos, staff knowledge, and field review, the BLM concluded that the unit appears in a natural condition where the imprints of man are substantially unnoticeable.

**(3) Does the unit (or the remainder of the unit if a portion has been excluded due to unnaturalness and the remainder is of sufficient size) have outstanding opportunities for solitude?** Yes  X  No   N/A

In 1979/1980, historic Unit 1-157/CA-020-1005 was found to offer some degree of solitude within stream drainages. The remaining area was found to only possess marginal opportunities to avoid the presence of others in the unit due to the generally open terrain, broad flat areas, and little vegetative screening. The shape and limited size of the unit found to be natural was also determined to restricted opportunities for solitude within the unit.

The BLM determined that there are several outstanding opportunities for solitude across the unit due to topographic and vegetative screening. Topographically the unit is very diverse numerous points, ridges, buttes, rims, canyons, and drainages. The unit ranges in elevation from 4,495 ft. to 7,025 feet. The unit is dominated by a 9.5 mile

broken rim (500-1,950 ft. high) running north to south along the eastern boundary and a central ridge broken ridge (350-1,100 ft. high) running 4.5 miles north to south through the central portion of the unit. The Eastern third of the unit is comprised of a lowland rolling terrain with small to moderate rims and buttes and two main drainages. Twelvemile Creek runs approximately 3.5 miles (300-600 ft. deep) in the northwest corner of the unit and Horse Creek runs approximately 5 miles (75-400 ft. deep) through the western third of the area. Western juniper stands have greatly expanded in height, width, and density. Approximately 16,500 acres of the unit is covered in moderate to high-density western juniper stands, with old-growth characteristics. Due to the above-described compartmentalized topography and vegetative conditions within the unit, one would easily be able to avoid the sights and sounds of others within the unit.

Thus, for the reasons specified above and based on a review of all the available information including (BLM and citizen provided) photos, staff knowledge, and field review, the BLM concluded the Twelvemile - Horse Creek inventory unit possesses outstanding opportunities for solitude.

**(4) Does the unit (or the remainder of the unit if a portion has been excluded due to unnaturalness and the remainder is of sufficient size) have outstanding opportunities for primitive and unconfined recreation?** Yes  No  N/A

In 1979/1980, historic Unit 1-157/CA-020-1005 was found to possess opportunities for hunting and wildlife observation, with limited potential as a day use area. The limited size of the unit found to be natural was determined to lack unique or interesting terrain and/or vegetation limited the recreational attractiveness of the unit. Thus, the unit was determined to not offer any outstanding recreation opportunities for primitive and unconfined recreation.

The BLM finds the combination and diversity of hiking, horseback riding, backpacking, camping, wildlife observation, exploration, scenery, photography, stargazing, trapping, hunting, and fishing are exceptional. The BLM determined that options for exploration of the unit's eastern rim, central ridge, fishing along Twelvemile Creek's recommended suitable Wild and Scenic River section, as well as viewing interesting botanical specimens (see supplemental values section) represent unique opportunities for primitive and unconfined recreation.

**(5) Does the unit have supplemental values?** Yes  No  N/A

The BLM found the unit to possess archaeological and geological values as well as the presence of Warner sucker, redband trout, mule deer, pronghorn antelope, California bighorn sheep, bald eagle, and sage-grouse habitat. The BLM also found portions of the unit in Nevada to contain botanical values including Washoe pine and white fir.

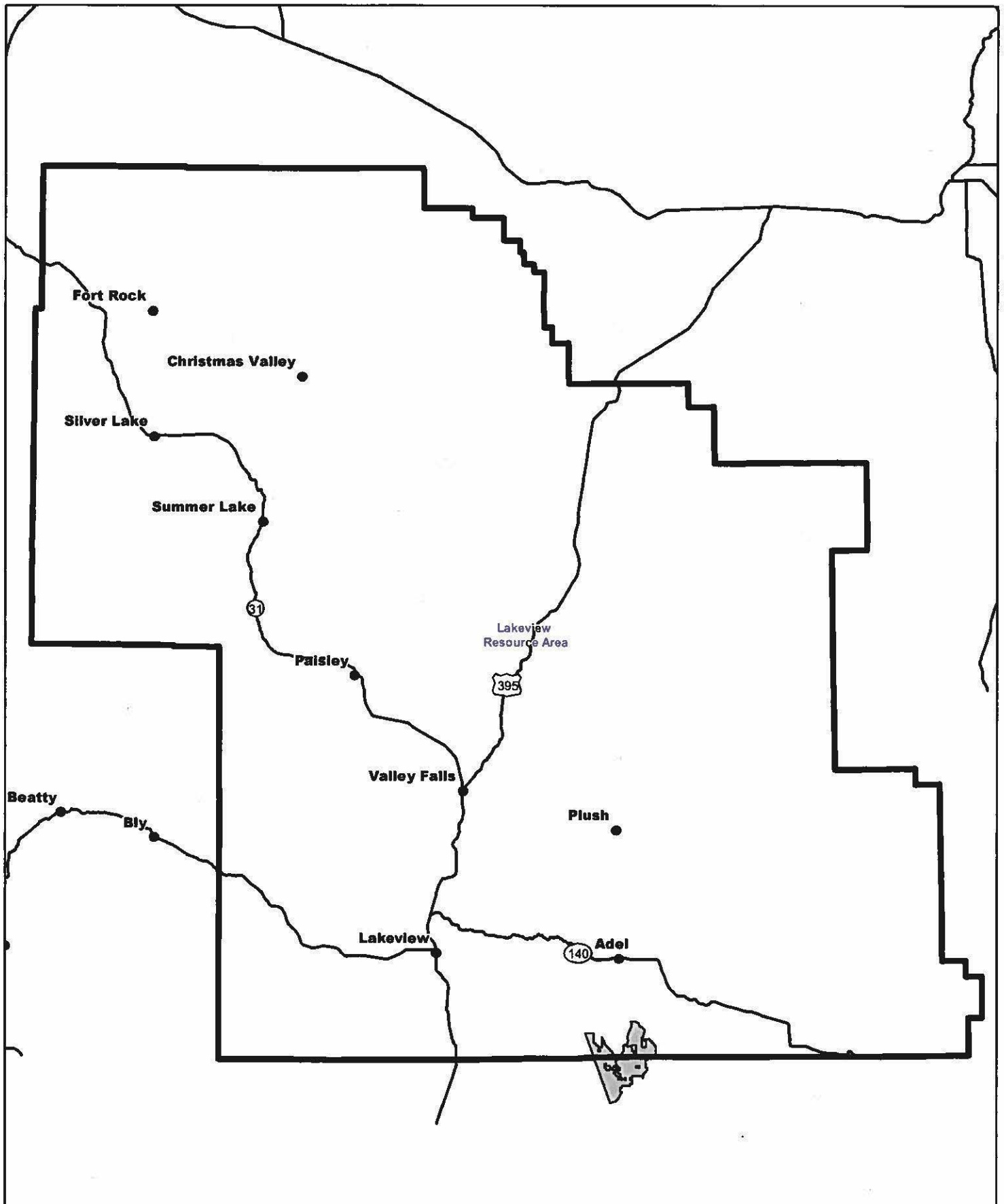
The inventory unit also contains 19,648 acres of the Rahilly-Gravelly Area of Critical Environmental Concern and Research Natural Area (ACEC/RNA) which was designated in 2003 during the Lakeview RMP process. This designation is intended to recognize and protect important cultural, wildlife, and botanical values. The ACEC/RNA “contains scattered western juniper stands, tall sagebrush mosaic, and low sagebrush on lithic soil flats”. In particular, the area contains three vegetation community cell needs of the Oregon Natural Heritage Program (Draft RMP/EIS, Appendix I, p. A-247 and Proposed RMP/Final EIS, p. 2-58):

- 1) Western juniper/big sagebrush-bitterbrush
- 2) Mountain brush
- 3) Bitterbrush-sagebrush, mountain snowberry/Thurber needlegrass mosaic

Additionally, in 2003, about 854 acres of the Twelvemile Creek corridor in Oregon was recommended suitable as a Wild and Scenic River within the Lakeview RMP/ROD. In 2008, an additional 457 acres of the creek corridor was recommended suitable within the Surprise RMP/ROD. The outstandingly remarkable values found within this corridor included the presence of fish habitat and populations (Warner sucker) (see Draft Lakeview RMP/EIS, Appendix J2, pages A-266 to A-270; 2001). Congress has yet to act upon these recommendations.




# Wilderness Character Inventory Vicinity Map for Unit: Twelvemile Mile-Horse Creek

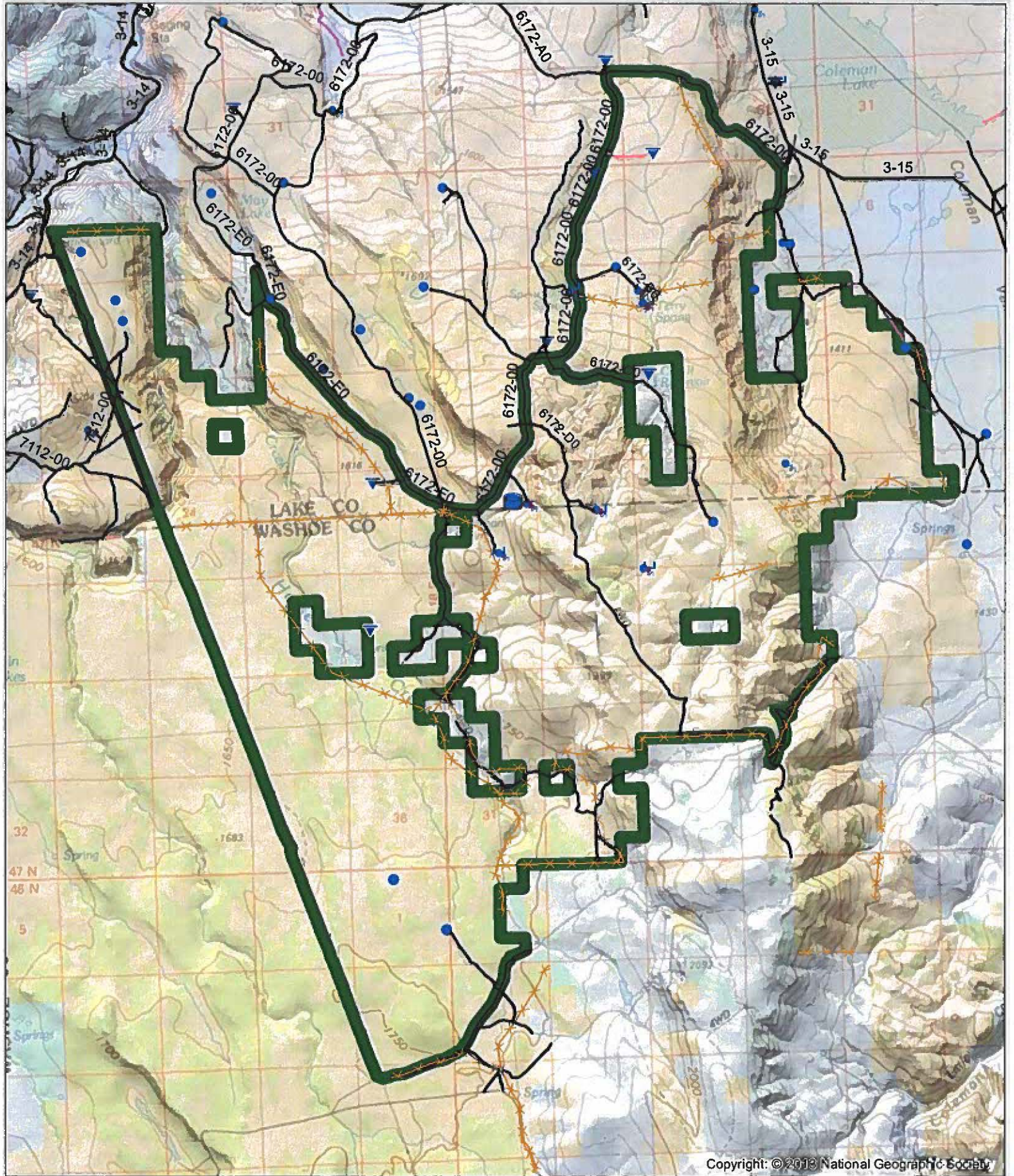


 Wilderness Character Inventory Unit



 No warranty is made by the Bureau of Land Management as to the accuracy, reliability, or completeness of these data for individual or aggregate use with other data. Original data were compiled from various sources. This information may not meet National Map Accuracy Standards. This product was developed through digital imagery and may be updated without notification.





Copyright: © 2013 National Geographic Society

<p><b>Wilderness Character Inventory Unit</b></p> <p><b>Ownership</b></p> <ul style="list-style-type: none"> <li><span style="display: inline-block; width: 15px; height: 10px; background-color: #90EE90; border: 1px solid black; margin-right: 5px;"></span> Bureau of Land Management</li> <li><span style="display: inline-block; width: 15px; height: 10px; background-color: #90EE90; border: 1px solid black; margin-right: 5px;"></span> U.S. Forest Service</li> <li><span style="display: inline-block; width: 15px; height: 10px; background-color: #ADD8E6; border: 1px solid black; margin-right: 5px;"></span> State</li> <li><span style="display: inline-block; width: 15px; height: 10px; background-color: #FFFFFF; border: 1px solid black; margin-right: 5px;"></span> Private/Unknown</li> </ul>	<p><b>Roads/Trails</b></p> <ul style="list-style-type: none"> <li><span style="display: inline-block; width: 15px; border-bottom: 1px solid black; margin-right: 5px;"></span> Motorized Roads</li> <li><span style="display: inline-block; width: 15px; border-bottom: 1px solid red; margin-right: 5px;"></span> Closed Routes</li> <li><span style="display: inline-block; width: 15px; border-bottom: 1px solid black; margin-right: 5px;"></span> Reclaiming Route</li> <li><span style="display: inline-block; width: 15px; border-bottom: 1px dashed black; margin-right: 5px;"></span> Motorized and Non-Motorized Trails</li> </ul>	<p><b>Pipelines and Ditches</b></p> <ul style="list-style-type: none"> <li><span style="display: inline-block; width: 15px; height: 10px; background-color: #ADD8E6; border: 1px solid black; margin-right: 5px;"></span> Ditch</li> <li><span style="display: inline-block; width: 15px; border-bottom: 1px solid black; margin-right: 5px;"></span> Water Pipeline</li> <li><span style="display: inline-block; width: 15px; height: 10px; background-color: #ADD8E6; border: 1px solid black; margin-right: 5px;"></span> Quzzer</li> <li><span style="display: inline-block; width: 15px; border-bottom: 1px dashed black; margin-right: 5px;"></span> Fence</li> </ul>	<p><b>Water Developments</b></p> <ul style="list-style-type: none"> <li><span style="display: inline-block; width: 15px; height: 10px; background-color: #ADD8E6; border: 1px solid black; margin-right: 5px;"></span> Dam</li> <li><span style="display: inline-block; width: 15px; height: 10px; background-color: #ADD8E6; border: 1px solid black; margin-right: 5px;"></span> Reservoir</li> <li><span style="display: inline-block; width: 15px; height: 10px; background-color: #ADD8E6; border: 1px solid black; margin-right: 5px;"></span> Spring Development</li> <li><span style="display: inline-block; width: 15px; height: 10px; background-color: #ADD8E6; border: 1px solid black; margin-right: 5px;"></span> Trough</li> <li><span style="display: inline-block; width: 15px; height: 10px; background-color: #ADD8E6; border: 1px solid black; margin-right: 5px;"></span> Water Diversion</li> <li><span style="display: inline-block; width: 15px; height: 10px; background-color: #ADD8E6; border: 1px solid black; margin-right: 5px;"></span> Water Tank</li> <li><span style="display: inline-block; width: 15px; height: 10px; background-color: #ADD8E6; border: 1px solid black; margin-right: 5px;"></span> Waterhole</li> <li><span style="display: inline-block; width: 15px; height: 10px; background-color: #ADD8E6; border: 1px solid black; margin-right: 5px;"></span> Well - Water</li> </ul>	<p>1 0.5 0 1 2</p> <p>Miles</p> <div style="text-align: center;"> <p>N</p> <p>W E</p> <p>S</p> </div> <p><small>No warranty is made by the Bureau of Land Management as to the accuracy, reliability, or completeness of these data for individual or aggregate use with other data. Original data were compiled from various sources. This information may not meet National Map Accuracy Standards. This product was developed through digital means and may be updated without notification.</small></p>
--	--	---	---	---