

Year: 2018 Inventory Unit Number/Name: OR-015-088/ Sunstone Mine North

**FORM 1:**

**DOCUMENTATION OF BLM WILDERNESS INVENTORY FINDINGS ON RECORD**

**1. Is there existing BLM wilderness inventory information on all or part of this area?**

No \_\_\_\_\_ (go to Form 2) Yes  X  (if more than one unit is within the area, list the names/numbers of those units).

**a) Inventory Source:** Wilderness Inventory – Final Intensive Inventory Decisions; USDI BLM - Oregon and Washington, November 1980.

**b) Inventory Unit Number(s)/ Name(s):** 1-88/ Sunstone Mine North

**c) Map Name(s)/Number(s):** Intensive Wilderness Inventory - Final Decisions; USDI BLM - Oregon, November 1980.

**d) BLM District(s)/Field Office(s):** Lakeview District, Lakeview Resource Area.

**2. BLM Inventory Findings on Record**

Existing inventory information regarding wilderness characteristics (if more than one BLM inventory unit is associated with the area, list each unit/acreage and answer each question individually for each inventory unit):

Unit#	Size (historic acres)	Natural Condition? Y/N	Outstanding Solitude? Y/N	Outstanding Primitive & Unconfined Recreation? Y/N	Supplemental Values? Y/N
1-88	29,360	Y	N	N	N/A
1-88*	34,717	N	N/A	N/A	N/A

\* The inventory of this unit was updated in 2011. However, due to a State Office-sponsored Wilderness Inventory Consistency Evaluation and subsequent guidance, the 2011 inventory analysis and findings are being replaced by this current 2018 inventory review. Documentation of the 2011 inventory can be found in the wilderness inventory project record.

**Summarize any known primary reasons for prior inventory findings listed in this table:**

In 1980, the inventory noted the presence of 7 water developments (reservoirs and lakebed pits), that were substantially noticeable in a limited area around each development, but did not significantly detract from the natural appearance of the unit as a whole. There were also

14 miles of “ways” across the unit, with one very noticeable “way” running north to south. The majority of the unit was in an apparently natural condition as developments were scattered and reasonably well screened by topography. There were isolated areas in the unit where one could experience some degree of solitude. The highly exposed nature of the west and southern portion of the unit precluded any opportunity for solitude in these areas. The central and eastern portions offered some solitude, but did not provide an outstanding opportunity. A person could avoid the presence of limited numbers of other people in the unit; however, anything above a very low visitor density would eliminate the solitude potential of the unit. The unit offered some potential in the central and eastern sections for hiking and limited backpack trips. Portions of the area were found to be scenic to some degree and would provide some points of interest. However, in context of the larger region, the unit did not provide outstanding opportunities for recreation experiences of a primitive and unconfined nature. The unit was expected to have some archaeological values, although none were documented.

## FORM 2

### DOCUMENTATION OF CURRENT WILDERNESS INVENTORY CONDITIONS

Unit Number/Name: OR-015-088/ Sunstone Mine North

(1) Is the unit of sufficient size? Yes X No \_\_\_\_\_

Between 2008 and 2016, the BLM conducted field inventory of the area to update its road and wilderness inventory and to gather additional information. This fieldwork included photo documentation of the boundary and interior routes and a re-evaluation of wilderness characteristics for this area. Using both citizen provided and BLM photos, field logs, and staff field knowledge, the BLM completed route analysis and made boundary determinations within the area in 2017.

The BLM determined that the inventory unit is bounded by BLM Road 6195-00 (Sunstone Road) on the west; BLM Roads 6155-00 (Warner Valley Road) and 6155-D0 (Bacon Camp Draw Road) on the east; BLM Road 6165-00 (Corn Lake Road) on the north; BLM Road 7145 (Last Chance Lakes Road), BLM interim numbered route 7145-A0, and private lands on the southwest. The boundary of this unit was changed to remove approximately 3,734 acres of unnatural features on the southern and eastern borders of the unit (pipeline, mining disturbance, high density of routes). Thus, based on these boundary and road determinations, the BLM found the Sunstone Mine North inventory unit to exceed the minimum size criteria at approximately 30,983 acres of BLM-administered lands.

Additional background on the process that the BLM followed during this evaluation is contained in the document, *Wilderness Inventory Maintenance Process for the Lakeview Resource Area, BLM* and in the *Route Analysis Forms*. Both documents can be found in the wilderness inventory file.

**DESCRIPTION OF CURRENT CONDITIONS:** The Sunstone Mine North inventory unit is located approximately 20 miles north of Plush, Oregon. The unit is approximately 12 miles long by 5.5 miles wide. The unit is dominated by Black Cap, Corporation Rim, and an unnamed rim along the eastern boundary, rising 500 feet above the Warner Valley, in the eastern half of the unit. The western portion of the unit is rolling hills with moderate topological features including Mikes Draw, Last Chance Lakes, and the eastern most Horseshoe formation, along with rims, buttes, and draws. In addition, the unit contains a half dozen moderate sized depressed lakebeds with several scattered ephemeral lakes throughout the unit. The eastern half of the unit burned in 1984. Vegetation in the unit is comprised of sagebrush, rabbit brush, and several grass species.

**(2) Is the unit in a natural condition?** Yes  No  N/A

The 1980 inventory found 7 water developments (reservoirs and lakebed pits), that were substantially noticeable in a limited area around each development, but did not significantly detract from the natural appearance of the unit as a whole. There were also 14 miles of “ways” across the unit, with one very noticeable “way” running north to south. The majority of the unit was in an apparently natural condition as developments were scattered and reasonably well screened by topography.

The unit currently contains the following man-made developments/disturbances: 13,001 acres of wildfire, 4,989 acres of seeding, 602 acres of chemical treatments, 6.5 acres of mow strips (fuel beaks), 30 miles of motorized routes, 17 miles reclaiming routes, 9.5 miles of cat lines, 19 miles of fence lines, 650 of ditches, 9 reservoirs, 8 waterholes, 6 guzzlers, 2 check dams, 1 well (non-functional), and 1 historic wilderness therapy group campsite.

Presently, almost 4 decades after the original inventory, these developments are weathered and grown over with herbaceous grasses and sagebrush. As a result, developments now fade into the background of the unit and are largely only noticeable at a close distance (1/4<sup>th</sup> mile or less) and are thus substantially unnoticeable from further distances. The topography of the area also plays a large role in screening disturbances and man-made developments due to rims, canyons, draws, shelves, buttes, and depressed lakebeds across the area. Areas that were seeded or allowed to revegetate naturally after wildfire, have been invaded by rabbit/sagebrush and have returned to a natural, post fire, appearing condition. In addition, the majority of the linear features in the western half of the unit have essentially rehabbed due to wildfires and seedings. Evidence of motorized routes are very difficult to follow and are only evident in short sections within patchy, unburned sagebrush islands.

Based on a review of all the available information including photos, staff knowledge, and field review, the BLM concluded that the unit appears in a natural condition where the imprints of man are substantially unnoticeable.

**(3) Does the unit** (or the remainder of the unit if a portion has been excluded due to unnaturalness and the remainder is of sufficient size) **have outstanding opportunities for solitude?** Yes  No  N/A

The 1980 inventory found isolated areas in the unit where one could experience some degree of solitude. The central and eastern portions offered some solitude, but did not provide an outstanding opportunity. A person could avoid the presence of limited numbers of other people in the unit; however, anything above a very low visitor density would eliminate the solitude potential of the unit.

The BLM determined that there are several outstanding opportunities for solitude across the area due to size and topographic screening. The inventory units is approximately 12 miles long by 5.5 miles wide (30,983 acres) and encompasses outstanding screening across the area. Features contributing to topographic screening include Black Cap, Corporation Rim, an unnamed rim along the eastern boundary, Mikes Draw, Last Chance Lakes, a nearly mile wide Horseshoe formation, and numerous minor rims, buttes, draws, and depressed lakebeds.

Thus, for the reasons specified above and based on a review of all the available information including (BLM and citizen provided) photos, staff knowledge, and field review, the BLM concluded the Sunstone Mine North inventory unit possess outstanding opportunities for solitude where one could avoid the sights and sounds of others in the area.

**(4) Does the unit** (or the remainder of the unit if a portion has been excluded due to unnaturalness and the remainder is of sufficient size) **have outstanding opportunities for primitive and unconfined recreation?** Yes  No  N/A

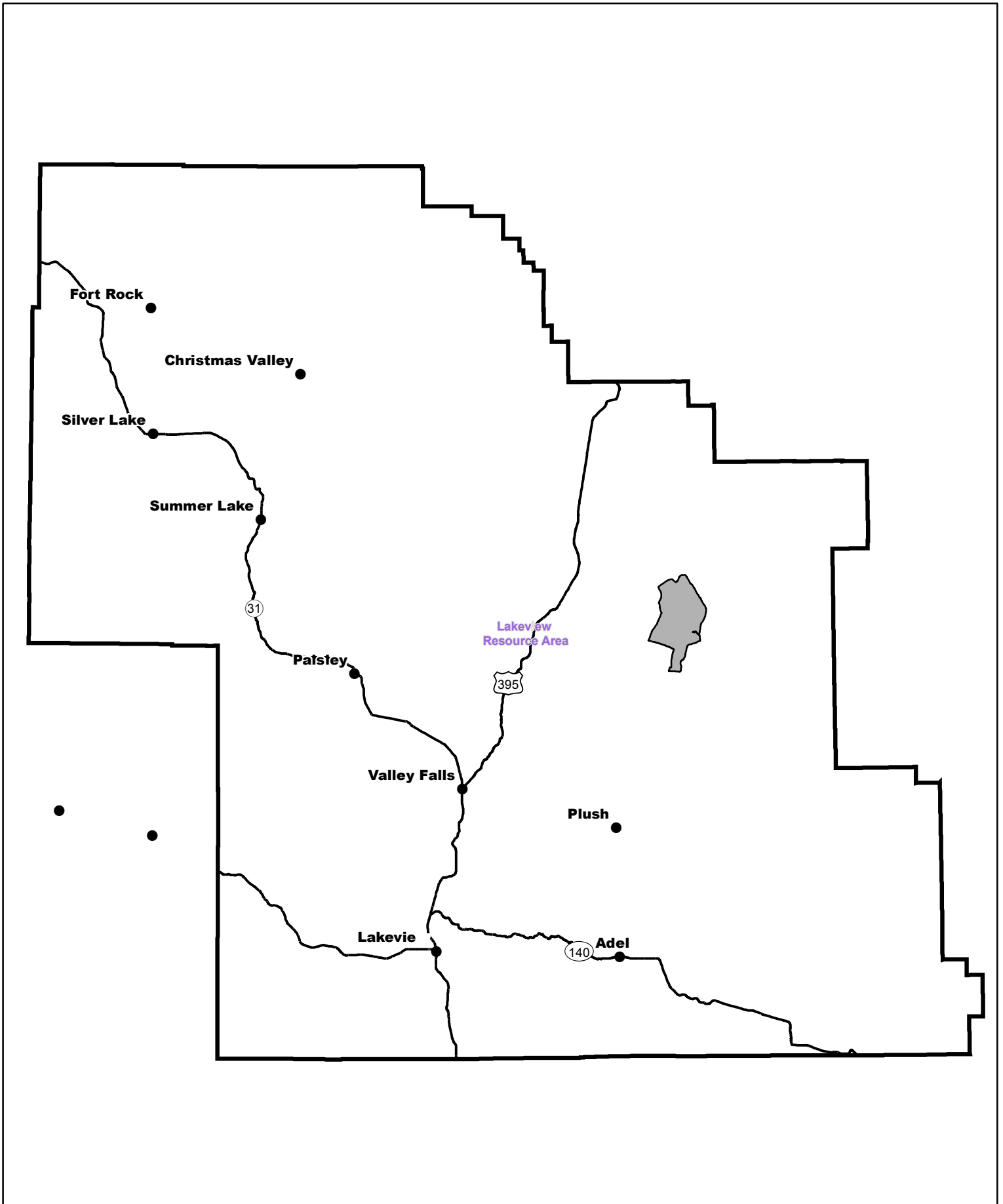
The 1980 inventory found potential for hiking and limited backpack trips, in the central and eastern sections of the unit, where portions of the area were determined to be scenic to some degree and provide some points of interest. However, in context of the larger region, the unit did not provide outstanding opportunities for recreation experiences of a primitive and unconfined nature.


The BLM concluded that all activities listed above in combination with the diversity of camping, horseback riding, sightseeing, hunting, trapping, photography, exploration, and wildlife viewing are exceptional throughout the unit. The BLM noted that opportunities for hiking along the entire 12-14 mile length of Corporation Rim, or the unnamed rim along the eastern boundary, represent unique opportunities for primitive and unconfined recreation.

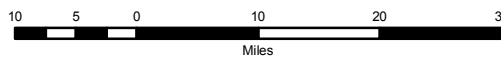
**(5) Does the unit have supplemental values?** Yes  No  N/A


The BLM noted the presence of archeological values and raptor nesting sites, as well as, golden eagle, pigmy rabbits, mule deer, chucker, and sage-grouse habitat.



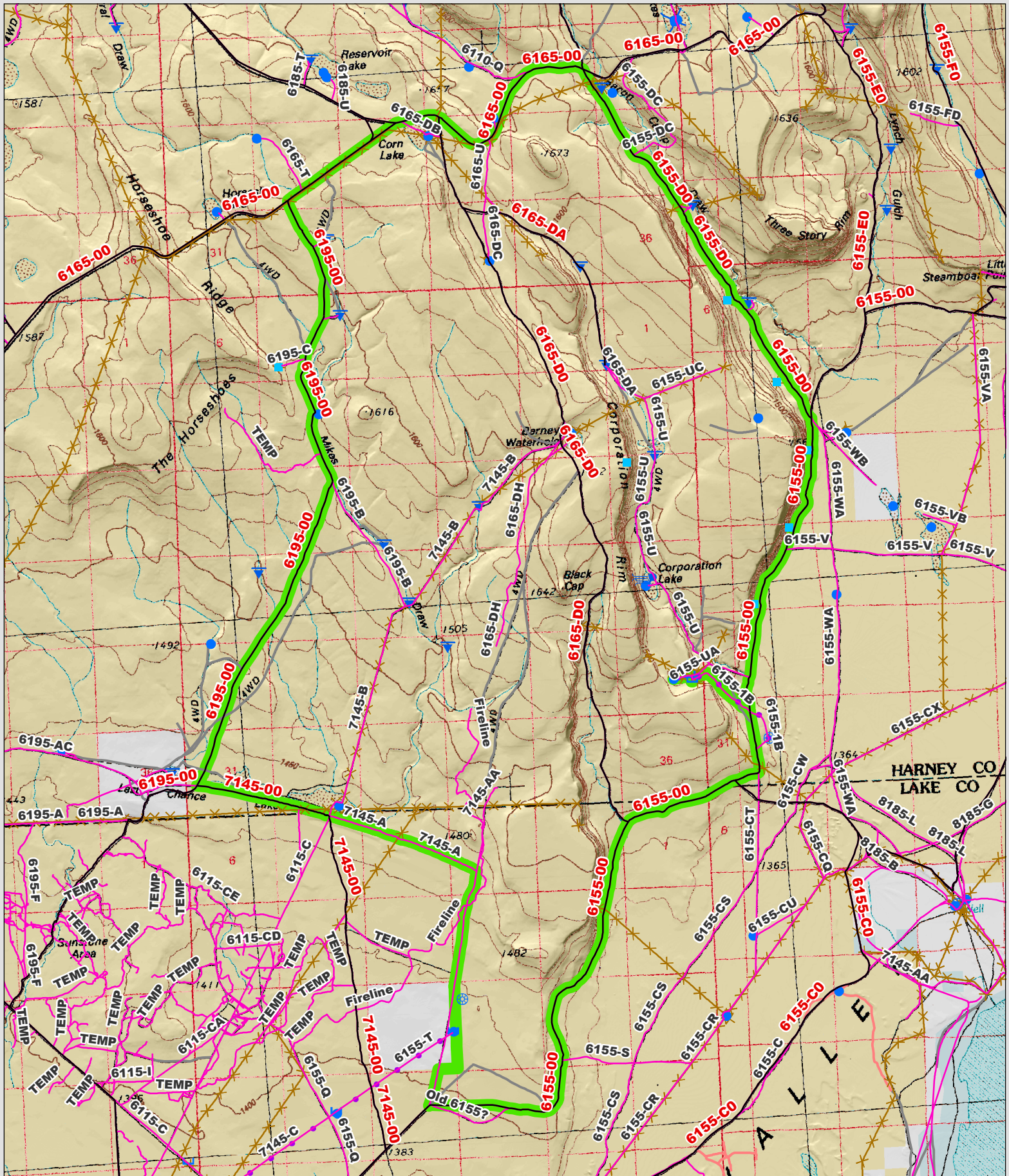


 Wilderness Character Inventory Unit



 No warranty is made by the Bureau of Land Management as to the accuracy, reliability, or completeness of these data for individual or aggregate use with other data. Original data were compiled from various sources. This information may not meet National Map Accuracy Standards. This product was developed through digital means and may be updated without notification.





<p><b>Wilderness Character Inventory Unit</b></p> <p><b>Ownership</b></p> <ul style="list-style-type: none"> <li><span style="display: inline-block; width: 15px; height: 10px; background-color: yellow; border: 1px solid black; margin-right: 5px;"></span> Bureau of Land Management</li> <li><span style="display: inline-block; width: 15px; height: 10px; background-color: lightgreen; border: 1px solid black; margin-right: 5px;"></span> U.S. Forest Service</li> <li><span style="display: inline-block; width: 15px; height: 10px; background-color: white; border: 1px solid black; margin-right: 5px;"></span> Private/Unknown</li> </ul>	<p><b>Roads/Trails</b></p> <ul style="list-style-type: none"> <li><span style="display: inline-block; width: 15px; border-bottom: 2px solid black; margin-right: 5px;"></span> Motorized Routes</li> <li><span style="display: inline-block; width: 15px; border-bottom: 2px solid red; margin-right: 5px;"></span> Highways</li> <li><span style="display: inline-block; width: 15px; border-bottom: 2px solid grey; margin-right: 5px;"></span> Reclaiming Routes</li> <li><span style="display: inline-block; width: 15px; border-bottom: 2px dashed pink; margin-right: 5px;"></span> Interim Routes</li> </ul>	<p><b>Pipelines and Ditches</b></p> <ul style="list-style-type: none"> <li><span style="display: inline-block; width: 15px; border-bottom: 2px solid blue; margin-right: 5px;"></span> Ditch</li> <li><span style="display: inline-block; width: 15px; border-bottom: 2px solid purple; margin-right: 5px;"></span> Water Pipeline</li> <li><span style="display: inline-block; width: 15px; height: 10px; background-color: lightblue; border: 1px solid black; margin-right: 5px;"></span> Guzzler</li> <li><span style="display: inline-block; width: 15px; border-bottom: 2px dashed orange; margin-right: 5px;"></span> Fences</li> </ul>	<p><b>Water Developments</b></p> <ul style="list-style-type: none"> <li><span style="display: inline-block; width: 15px; height: 10px; background-color: lightblue; border: 1px solid black; margin-right: 5px;"></span> Dam</li> <li><span style="display: inline-block; width: 15px; height: 10px; background-color: lightblue; border: 1px solid black; margin-right: 5px;"></span> Reservoir</li> <li><span style="display: inline-block; width: 15px; height: 10px; background-color: lightblue; border: 1px solid black; margin-right: 5px;"></span> Spring Development</li> <li><span style="display: inline-block; width: 15px; height: 10px; background-color: lightblue; border: 1px solid black; margin-right: 5px;"></span> Trough</li> <li><span style="display: inline-block; width: 15px; height: 10px; background-color: lightblue; border: 1px solid black; margin-right: 5px;"></span> Water Diversion</li> </ul>	<ul style="list-style-type: none"> <li><span style="display: inline-block; width: 15px; height: 10px; background-color: lightblue; border: 1px solid black; margin-right: 5px;"></span> Water Tank</li> <li><span style="display: inline-block; width: 15px; height: 10px; background-color: lightblue; border: 1px solid black; margin-right: 5px;"></span> Waterhole</li> <li><span style="display: inline-block; width: 15px; height: 10px; background-color: lightblue; border: 1px solid black; margin-right: 5px;"></span> Well - Water</li> </ul>	<p>1.5    0.75    0    1.5 Miles</p> <p>Scale bar and North arrow.</p> <p><small>No warranty is made by the Bureau of Land Management as to the accuracy, reliability, or completeness of these data for individual or aggregate use with other data. Original data were compiled from various sources. This information may not meet National Map Accuracy Standards. This product was developed through digital means and may be updated without notification.</small></p>
--	---	--	---	--	--