

Year: 2018

Inventory Unit Number/Name: OR-015-121A/ Spanish Lake

FORM 1

DOCUMENTATION OF BLM WILDERNESS INVENTORY FINDINGS ON RECORD

1. Is there existing BLM wilderness inventory information on all or part of this area?

No _____ Yes X (if more than one unit is within the area, list the names/numbers of those units):

a) Inventory Source:

- b) Wilderness – Proposed Initial Inventory: Roadless Areas and Islands Which Clearly Do Not Have Wilderness Characteristics; USDI BLM - Oregon and Washington, April 1979.
- c) Wilderness Review – Initial Inventory: Final Decision on Public Lands Obviously Lacking Wilderness Characteristics and Announcement of Public Lands to be Intensively Inventoried for Wilderness Characteristics; USDI BLM - Oregon and Washington, August 1979.

b) Inventory Unit Number(s)/Name(s): 1-121

c) Map Name(s)/Number(s): Final Decision - Initial Wilderness Inventory: Public Lands and Islands Which Do Not Have Wilderness Characteristics and Units To Be Intensively Inventoried; USDI BLM - Oregon, August 1979.

d) BLM District(s)/Field Office(s): Lakeview District, Lakeview Resource Area.

2. BLM Inventory Findings on Record:

Existing inventory information regarding wilderness characteristics (if more than one BLM inventory unit is associated with the area, list each unit and answer each question individually for each inventory unit):

Unit#	Size (historic acres)	Natural Condition? Y/N	Outstanding Solitude? Y/N	Outstanding Primitive & Unconfined Recreation? Y/N	Supplemental Values? Y/N
1-121	13,200	N	N	N	N/A
1-121A*	10,339	Y	N	N	N/A

*The inventory of this unit was updated in 2009. However, due to a State Office-sponsored Wilderness Inventory Consistency Evaluation and subsequent guidance, the 2009 inventory analysis and findings are being replaced by this current 2018 inventory review. Documentation of the 2009 inventory can be found in the wilderness inventory project record.

Summarize any known primary reasons for prior inventory findings listed in this table:

The area was located approximately five miles southeast of Adel, and contained approximately 13,200 acres of public land. A road identified during inventory crossed the unit isolating less than 5,000 acres in the northern third portion. The southern portion of the unit consisted primarily of the intermittent Coleman Lake. Lands around the lake supported greasewood and sage cover. Alternating flood and dry periods left the lake bed in a relatively natural condition. Water developments and fence lines in the east constituted significant impacts on the naturalness of the east side of the unit; it does not appear to have been affected primarily by the forces of nature. The road on the west boundary of the unit was elevated above the unit, and traffic on it precluded opportunities for solitude. Recreation potential on the unit was limited.

**FORM 2
DOCUMENTATION OF CURRENT WILDERNESS INVENTORY
CONDITIONS**

**FORM 2
DOCUMENTATION OF CURRENT WILDERNESS INVENTORY
CONDITIONS**

Unit Number/Name: OR-015-121A/ Spanish Lake

(1) Is the unit of sufficient size? Yes No

Between 2007 and 2016, BLM staff conducted field inventory in the area as part of a process to update its road and wilderness inventories and to gather additional information to supplement ONDA's wilderness information. This fieldwork included photo documentation of the boundary and interior routes and a re-evaluation of wilderness characteristics for this area. Using both ONDA and BLM photos, field logs, and staff field knowledge, the BLM completed route analysis within the area in 2017.

The BLM determined that the inventory unit is bounded by BLM road 6182-00 and private lands to the north; 6182-00 to the east; a right-of-way for County Road 3-15 and private lands to the west. Due to changes in boundary determinations (roads) and cut-outs of unnatural features (mineral pits and the recent Coleman Seeding), approximately 430 acres were removed from the unit.

Thus, based on these boundary and road determinations, the BLM found the Spanish Lake inventory unit to exceed the minimum size criteria at approximately 9,918 acres of BLM-administered lands.

Additional background on the process the BLM followed during this evaluation is contained in the document, *Wilderness Inventory Maintenance Process for the Lakeview Resource Area, BLM* and in the *Route Analysis Forms*. Both documents can be found in the wilderness inventory file.

DESCRIPTION OF CURRENT CONDITIONS:

This unit is located approximately 5.5 miles southeast of Adel, Oregon. It is approximately 7 miles long by 3 miles wide. Topographically, the northern third of the unit is dominated by two fault block terraces (25-400 ft. high), while the southern two thirds consists of the large lakebed of Coleman Lake. Overall, the unit ranges in elevation from 4,460 to 4,915 feet. Vegetation consist of scattered sagebrush, greasewood, and grass communities.

(2) Is the unit in a natural condition? Yes X No N/A

In 1979, historic Unit 1-121 contained a “way” that crossed the unit isolating less than 5,000 acres in the north. Water developments and fence lines in the east constituted significant impacts on the naturalness of the east side of the unit; it did not appear to have been affected primarily by the forces of nature.

The unit currently contains the following man-made developments/disturbances: 457 acres of chemical treatments, 22 acres of prescribed burns, 6 miles of fence lines, 5 miles of motorized routes, 3 miles of reclaiming routes, 1.75 miles of closed routes, 500 ft. of pipeline, 3 waterholes, 2 developed springs, 1 trough, and 2 holding ponds.

Presently, almost 4 decades after the original inventory, these developments are weathered and grown over with herbaceous grasses and sagebrush. As a result, developments now fade into the background of the unit and are largely only noticeable at a close distance (1/4th mile or less) and are thus substantially unnoticeable from further distances. Furthermore, many of the disturbances are located near the perimeter of the unit and, as such, have a small area of influence. Additionally, areas that were allowed to revegetate naturally after prescribed burns have returned to a natural appearing condition

Based on a review of all the available information including photos, staff knowledge, and field review, the BLM concluded that the unit appears in a natural condition where the imprints of man are substantially unnoticeable.

(3) Does the unit (or the remainder of the unit if a portion has been excluded due to unnaturalness and the remainder is of sufficient size) **have outstanding opportunities for solitude?** Yes _____ No X N/A _____

In 1979, historic Unit 1-121 was found to lack outstanding opportunities for solitude due to an elevated road along the western boundary that received enough traffic to precluded solitude.

The BLM acknowledges that there are limited opportunities for solitude within the Spanish Lake inventory unit. Topographically, the northern third of the unit is dominated by two fault block terraces (25-400 ft. high), while the southern two thirds consists of the large lakebed of Coleman Lake. Overall, the unit ranges in elevation from 4,460 to 4,915 feet. Vegetation consist of scattered sagebrush, greasewood, and grass communities. These opportunities are less than outstanding as the area's characteristic landscape lacks vegetative screening and existing topographic screening is insufficient to effectively allow those recreating in the area to avoid the sights and sounds of others.

Thus, for the reasons specified above and based on a review of all the available information including (BLM and citizen provided) photos, staff knowledge, and field review, the BLM concluded the Spanish Lake inventory unit does not possess outstanding opportunities for solitude.

(4) Does the unit (or the remainder of the unit if a portion has been excluded due to unnaturalness and the remainder is of sufficient size) **have outstanding opportunities for primitive and unconfined recreation?** Yes _____ No X N/A _____

In 1979, analysis for historic Unit 1-121 noted that recreation potential on the unit was limited.

The BLM finds the unit offers limited opportunities for hiking, horseback riding, backpacking, camping, wildlife observation, exploration, scenery, photography, stargazing, trapping, and hunting. However, the BLM determined that the unit does not possess outstanding opportunities for primitive and unconfined recreation through either the diversity of recreational activities possible in the area or by the outstanding quality of one opportunity relative to opportunities found within the Lakeview Resource Area.

(5) Does the unit have supplemental values? Yes _____ No _____ N/A X

Supplemental values were not evaluated as the unit was determined to lack both outstanding opportunities for solitude and or primitive and unconfined recreation, and therefore does not meet the minimum wilderness criteria.

Summary of Findings and Conclusion

Unit Number/Name: OR-015-121A/ Spanish Lake

Summary Results of Analysis:

- 1. Does the area meet the size requirements? X Yes No
- 2. Does the area appear to be natural? X Yes No
- 3. Does the area offer outstanding opportunities for solitude or a primitive and unconfined type of recreation? Yes X No NA
- 4. Does the area have supplemental values? Yes No X NA

Conclusion (Check One):

 The area- or a portion of the area- has wilderness character:
(items 1, 2 and 3 must be checked "yes").

 X The area does not have wilderness character: *(any of items 1, 2 and 3 are checked "no").*

Prepared by (Member Names and Titles):


Chris Bishop, Outdoor Recreation Planner

11/1/2018
Date


Jami Ludwig: Assistant Field Manager

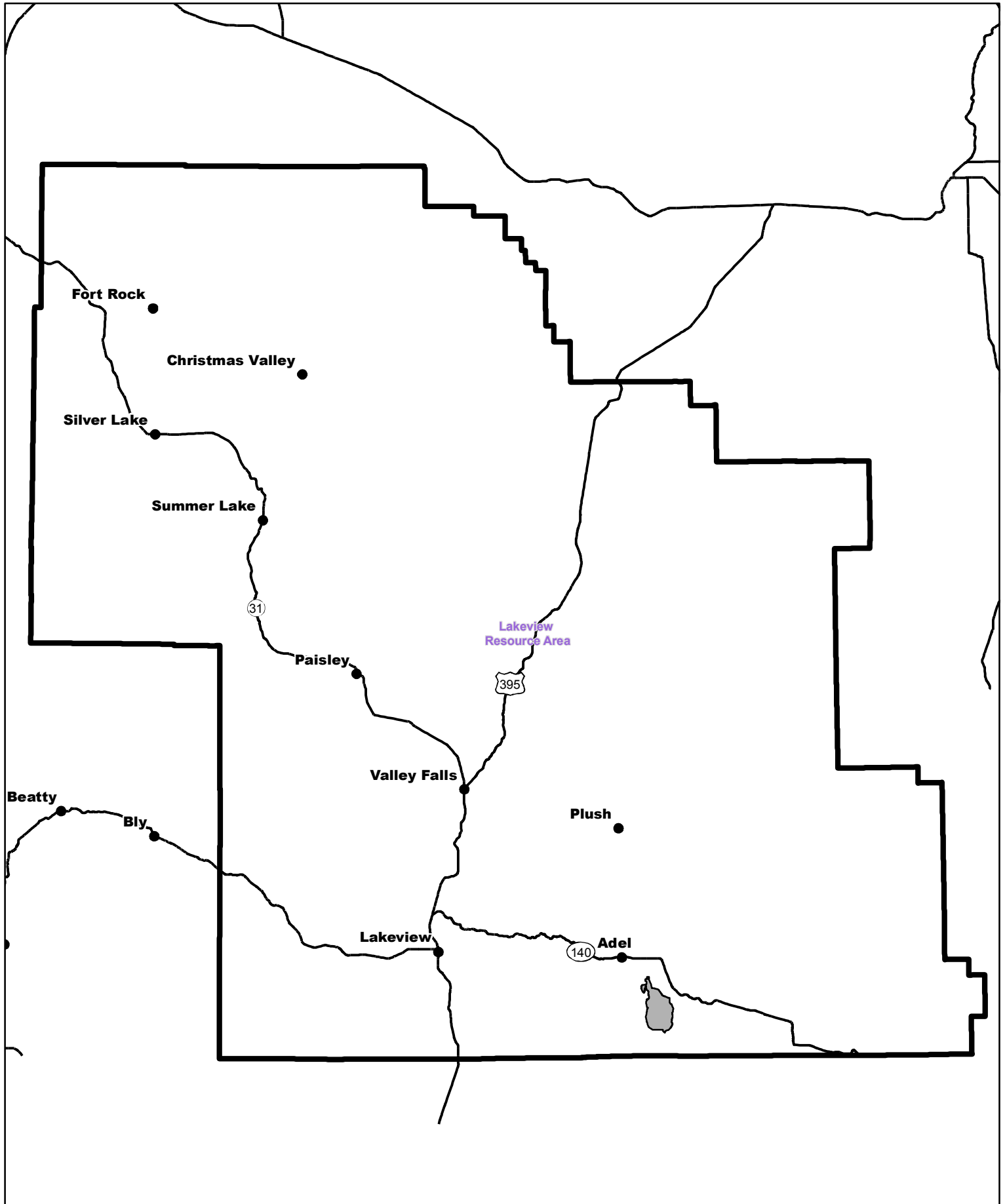
11/2/18
Date


Approved by:

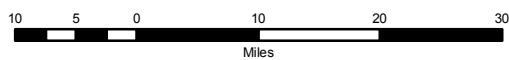

J Todd Forbes
Field Manager


11/2/18
Date

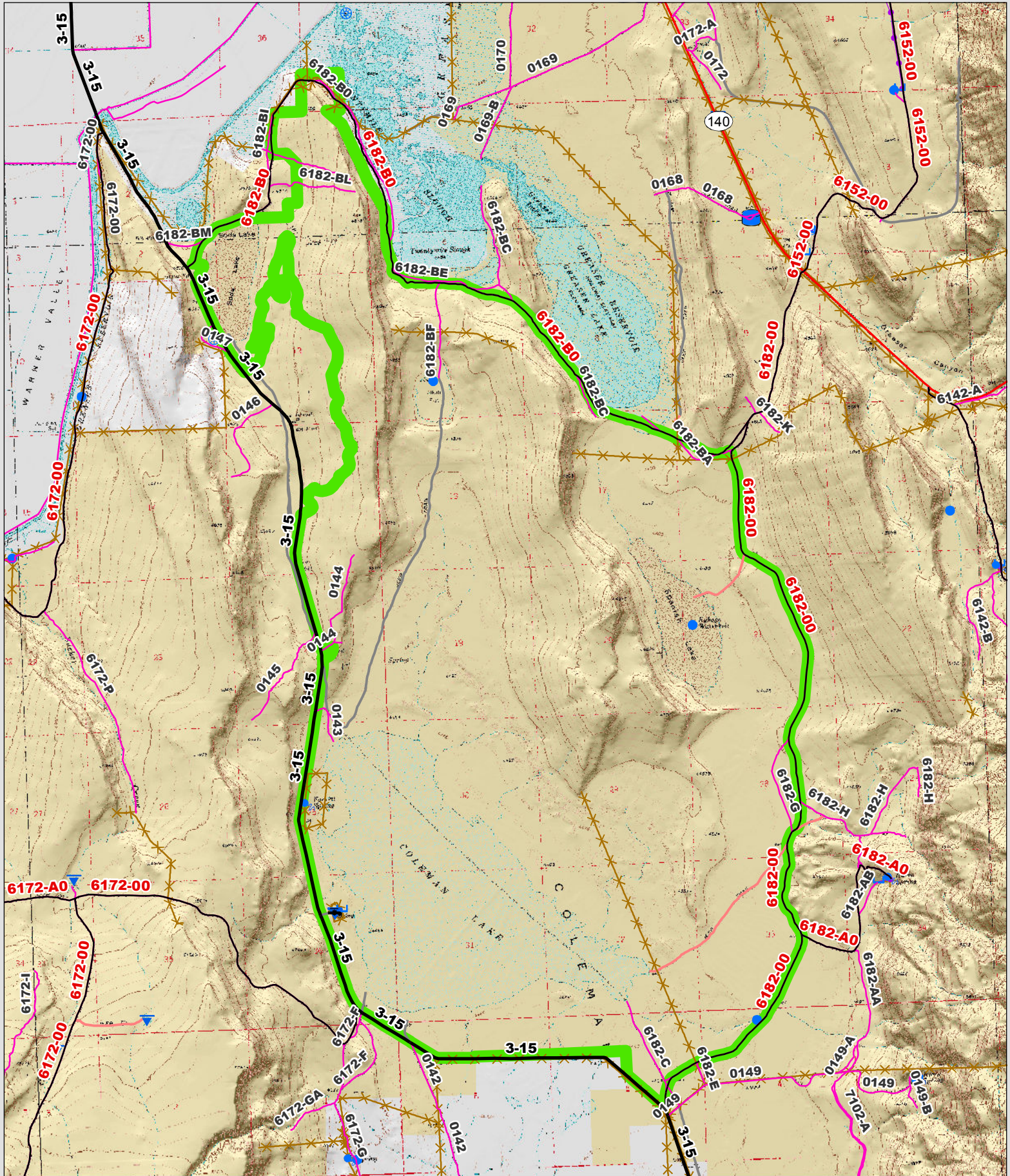
This form documents information that constitutes an inventory finding on wilderness characteristics. It does not represent a formal land use allocation or a final agency decision subject to administrative remedies under 43 CFR parts either 4 or 1610.5-2.



 Wilderness Character Inventory Unit



 No warranty is made by the Bureau of Land Management as to the accuracy, reliability, or completeness of these data for individual or aggregate use with other data. Original data were compiled from various sources. This information may not meet National Map Accuracy Standards. This product was developed through digital means and may be updated without notification.



Wilderness Character Inventory Unit

Ownership

- Bureau of Land Management
- U.S. Forest Service
- Private/Unknown

Roads/Trails

- Motorized Routes
- Highways
- Reclaiming Routes
- Interim Routes

Pipelines and Ditches

- Ditch
- Water Pipeline
- Guzzler
- Fences

Water Developments

- Dam
- Reservoir
- Spring Development
- Trough
- Water Diversion

- Water Tank
- Waterhole
- Well - Water

1 0.5 0 1 Miles

No warranty is made by the Bureau of Land Management as to the accuracy, reliability, or completeness of these data for individual or aggregate use with other data. Original data were compiled from various sources. This information may not meet National Map Accuracy Standards. This product was developed through digital means and may be updated without notification.